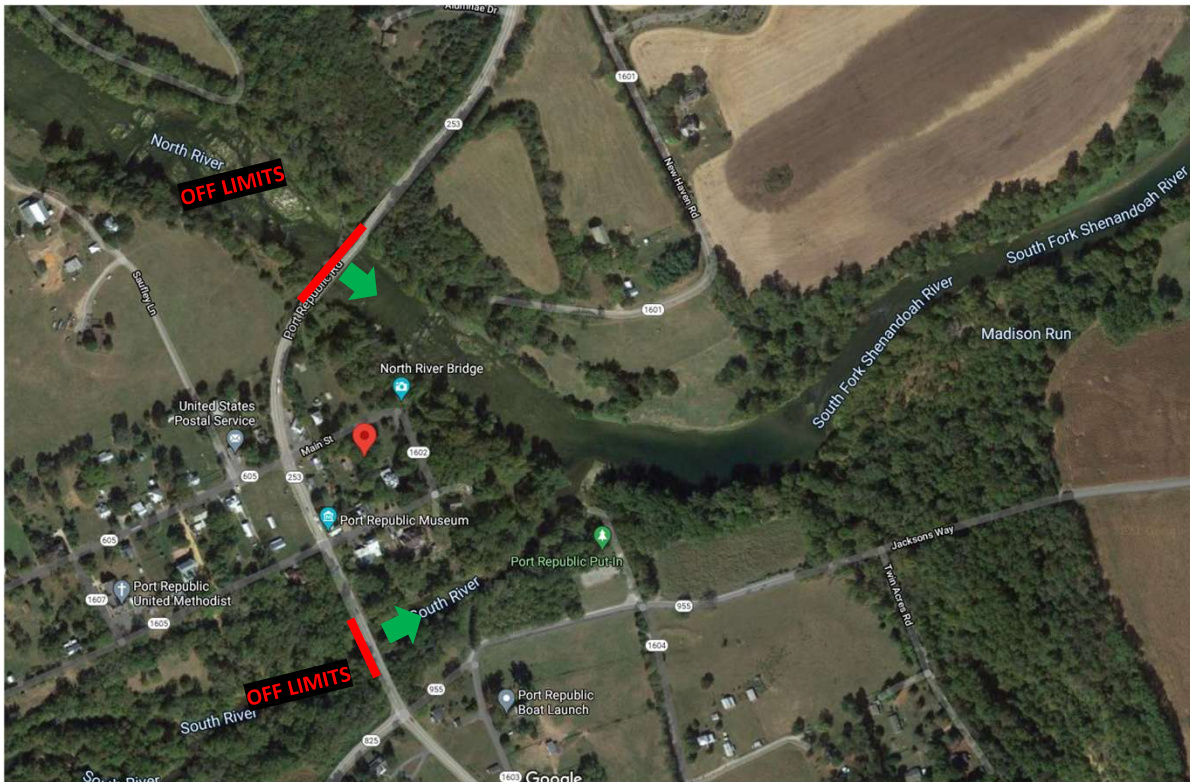


North Fork Shenandoah River: Edinburg (675 Bridge) to North Fork and South Fork confluence (Riverton)



South Fork Shenandoah River: Port Republic (253 Bridge) to North Fork and South Fork confluence (Riverton)



Shenandoah River: North Fork and South Fork confluence (Riverton) to Harpers Ferry (B&O Railroad bridge) and 340 Bridge

