

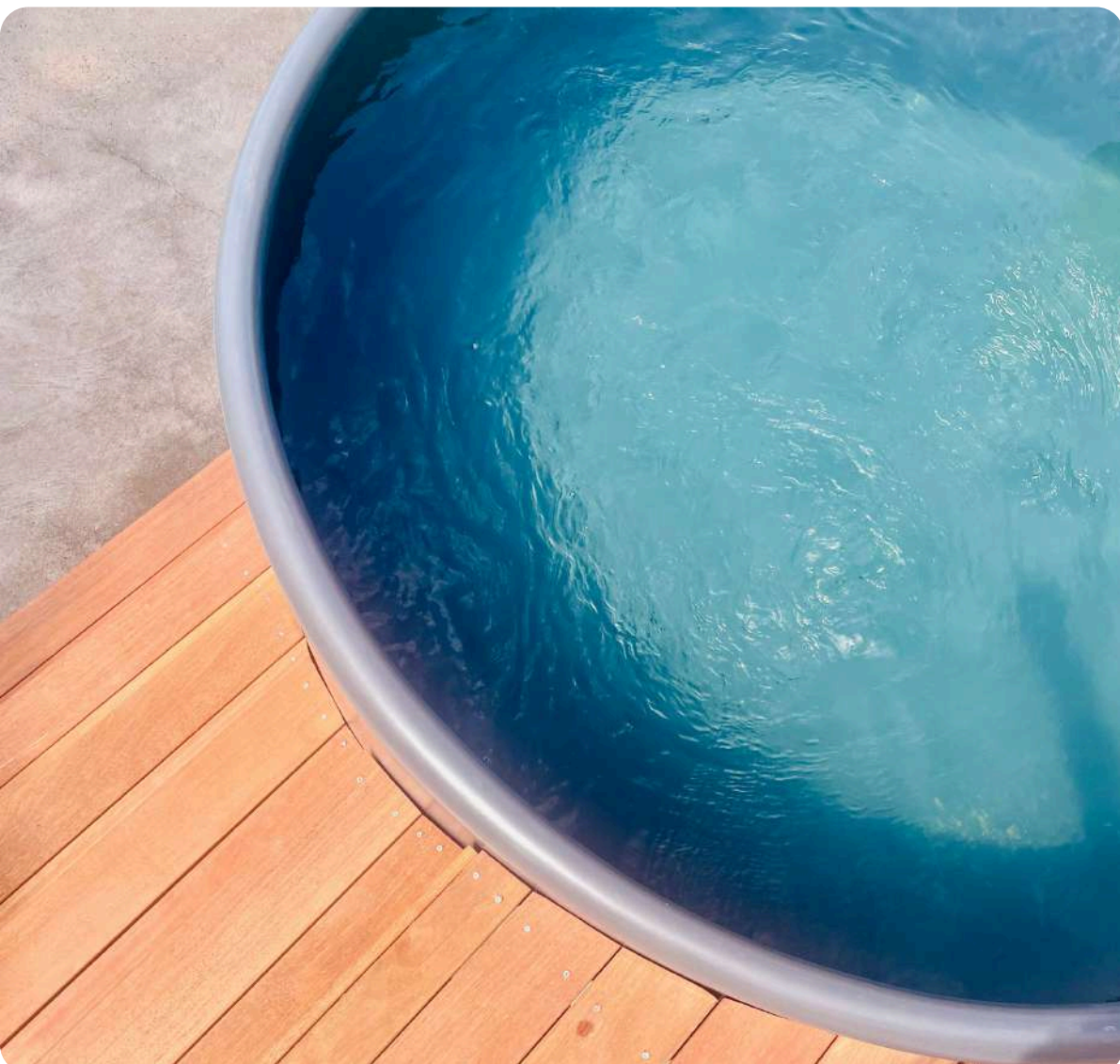


PURE PLUNGE

PRODUCT OVERVIEW

Our mission is simple, to provide high quality Australian made plunge pools that enhance your lifestyle without breaking the bank.

Simple | Affordable | Australian



ABOUT US

Embark on a journey with us. We are two aussie mates turning our shared passion for leisure and innovation into a thriving venture. Born from a simple idea and fueled by a love for Australian backyard culture, Pure Plunge stands as a testament to the power of friendship and ingenuity.



With a deep understanding of the Australian lifestyle and a commitment to high quality and affordable plunge pools, we've set out to redefine the concept of backyard bliss.

Australian made plunge pools made for Australia.

Will and Brent

PLUNGE POOLS

Pure Plunge offers the perfect blend of affordability, style, and simplicity for Australian homes. Proudly manufactured in Australia, our plunge pools are built to withstand the local climate, ensuring longevity and quality.

Crafted with high-quality materials and partnering with market leaders Waterco/Davey for pumps and filters, we provide assurance that you are receiving premium products backed by Australian warranties. What sets Pure Plunge apart is our affordability without compromising on quality.





BURLEIGH 5000



Diameter: 2400mm | Height: 1115mm | Volume: 5000ltrs

Introducing the Burleigh 5000, perfect for up to 6 people. Inspired by the famous Australian surf beach, this spacious plunge pool brings a touch of coastal elegance to your backyard. Enjoy refreshing dips and intimate gatherings in a pool designed for comfort and relaxation.



BYRON 1950



Diameter: 1800mm | Height: 880mm | Volume: 1950ltrs

Our Byron 2000 is crafted for ultimate relaxation, much like the serene beachside town it's named after. Designed for up to 4 people but offering luxurious spaciousness for 2.

Perfect for intimate gatherings or solo indulgence, our plunge pools provide a refreshing retreat that fits seamlessly into any backyard. Enjoy the perfect blend of comfort and elegance.





BELLS 1300



Diameter: 1500mm | Height: 900mm | Volume: 1300ltrs

Our Bells model may be small, but it's mighty—just like the renowned Aussie surf beach it's named after. Equipped with an extremely strong Waterco pump, it delivers a high volume of pressure, creating a therapeutic oasis right in your backyard.

Easy step in and step out with a depth of 900mm and a diameter of 1500mm, making it perfect for two people.



**Burleigh
Byron
Bells**



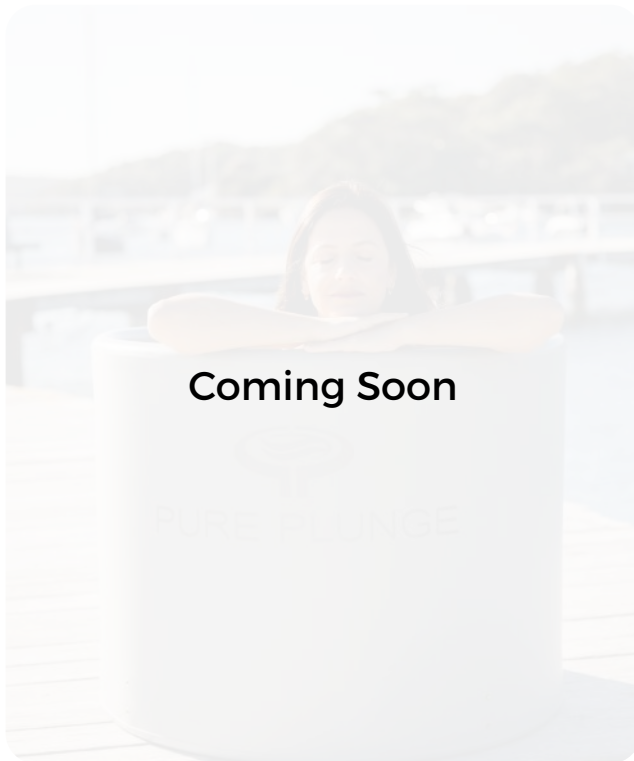
KIRRA THERAPY BATH 350

Diameter: 870mm | Height: 680mm | Volume: 350ltrs

The Kirra Therapy Bath offers an affordable and effective solution for muscle recovery. Built to last, it's lightweight, easy to move, and designed for single-person use. A built-in drainage outlet makes emptying simple, while an optional custom-fit insulated cover is available for purchase. Just add ice blocks or magnesium salts, and you're all set for a refreshing plunge.



The Kira includes four silicone ice block moulds, allowing you to create your own ice blocks at home with no need to buy bagged ice. Just keep the frozen blocks on hand in your freezer, ready whenever you're set for your next plunge.



Coming Soon

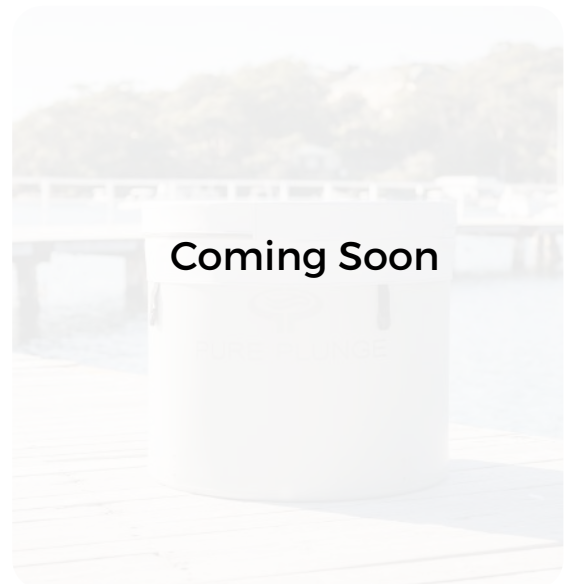
SHELLY SPLASH POOL 900

Diameter: 1500mm | Height: 600mm | Volume: 900ltrs

Cool off with this lightweight yet ultra-tough splash pool, perfect for kids, dogs, or anyone needing a break from the heat. Choose between the standard model or upgrade to a premium Waterco pump and filter for clean, circulating water. Quick to drain and refill in under 20 minutes, it's built for convenience and lasting fun. And when the kids outgrow it? Step up to one of our larger plunge pools.



Coming Soon



Coming Soon

DIMENSIONS



BURLEIGH 5000 PLUNGE POOL

Diameter: 2400mm

Height: 1115mm

Litres: 5000

Dry weight: 120kg

Water weight: 5 tonne



BYRON 2000 PLUNGE POOL

Diameter: 1800mm

Height: 880mm

Litres: 1950

Dry weight: 90kg

Water weight: 1.95 tonne



BELLS 1300 PLUNGE POOL

Diameter: 1500mm

Height: 900mm

Litres: 1300

Dry weight: 80kg

Water weight: 1.3 tonne

DIMENSIONS



KIRRA 350 THERAPY BATH

Diameter: 870mm

Height: 680mm

Litres: 350

Dry weight: 10kg

Water weight: 350kg



SHELLY 900 SPLASH POOL

Diameter: 1500mm

Height: 600mm

Litres: 900

Dry weight: 10kg

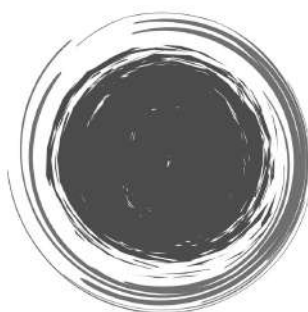
Water weight: 900kg

COLOURS

Explore our extensive range of Colorbond colours, designed to perfectly complement your home. With a wide array of shades, from timeless classics to bold statements, you can effortlessly match a Pure Plunge pool to you're home's color scheme.



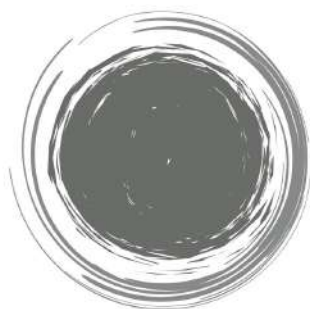
Surf Mist



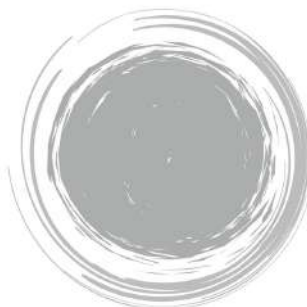
Night Sky



Deep Ocean



Monument



Wind Spray



Paperbark



Pale Eucalypt

ACCESSORIES

Pure Plunge offer a wide range of accessories to complement our plunge pools. Enjoy plunging all year round with our Waterco heater. Add ambiance to your backyard with a multi coloured LED pool light or enjoy the benefits of magnesium salt water with our Waterco chlorinator.

We also offer insulated custom made covers with lockable straps to protect your pool and your family members.



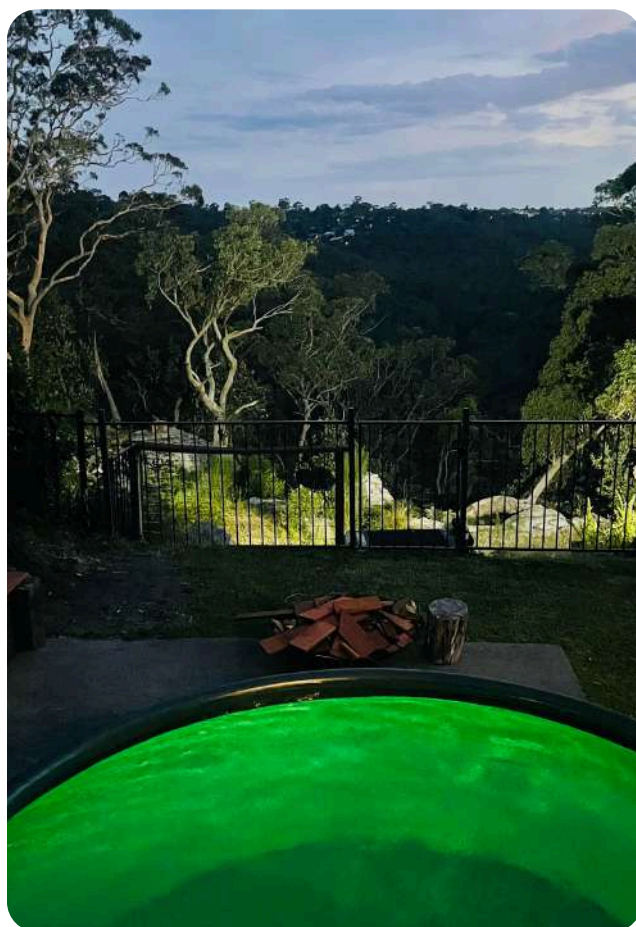
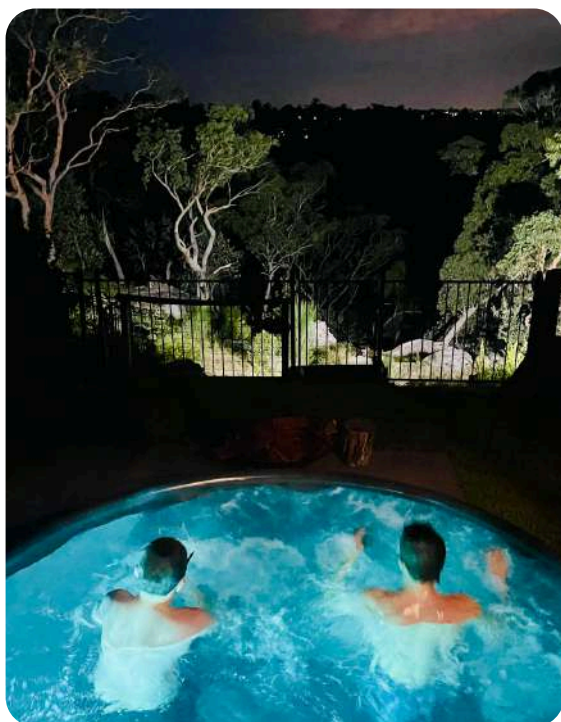
CUSTOM COVERS

Custom-made insulated pool covers are available in a variety of eye-catching colors to match any backyard aesthetic, crafted to fit your pool's unique dimensions with 8 lockable straps for secure fitting.

Featuring high-quality UV-resistant materials that reduce heat loss and evaporation, maintain ideal pool temperature, extend swimming season, improve energy efficiency, keep debris out, reduce maintenance time and costs, and enhance safety by preventing accidental access.



LIGHTING



Enhance your pool's ambiance with our stunning LED multi-colored under water pool lighting. Whether you enjoy night plunges or simply want to add an exciting light feature for those backyard gatherings with friends and family.



HEATING AND MAGNESIUM CHLORINATION




Experience year-round swimming with our high-performance pool heater, ensuring your pool is always at the perfect temperature.

Pair it with our magnesium salt chlorinator for crystal-clear water that's gentle on your skin. Upgrade your pool with our top-tier magnesium solutions and dive into comfort and luxury.



COMPARISON CHART

	 PURE PLUNGE	Competitor	Competitor	Competitor
BRAND NAME	HIGH DENSITY POLYETHYLENE	STAINLESS STEEL	FIBERGLASS	CONCRETE
PRICE	\$\$	\$\$\$	\$\$\$	\$\$\$\$
MATERIAL	12MM THICK SINGLE MOLDED DESIGN WITH NO JOINS	0.5MM THICK WITH WELDED JOINS SEALED WITH SILICON	4.8MM - 9MM THICK SINGLE MOLDED DESIGN WITH NO JOINS	150MM THICK FORMED
STRENGTH / DURABILITY	HIGH	MODERATE	HIGH	VERY HIGH
DESIGN AND COLOUR VERSATILITY	MULTIPLE COLOUR OPTIONS	STAINLESS STEEL ONLY	MULTIPLE COLOUR OPTIONS	WIDE VARIETY OF TILE DESIGNS
LOCKABLE RIGID COVER OPTIONS	YES	NO	NO	NO

“PURE PLUNGE BUNDLES
AFFORDABILITY,
DURABILITY AND DESIGN
INTO ONE NEAT LITTLE
AUSTRALIAN MADE POOL”

Cameron.S (customer)



COMPARISON IN DETAIL



Pure Plunge Pools: High-Density Polyethylene:

- Single molded with no joints, welds or liners. Made from High Density Polyethylene (HDPE) which is highly durable and resistant to chemicals and UV exposure
- A whopping 10MM THICK whilst still very lightweight, making it easier to transport and install compared to heavier materials .
- Designed to handle varying water chemistries without significant risk of corrosion, scaling, or surface damage.
- Multiple colour options available and affordable.

Stainless Steel Plunge Pools:

- Welded joints using silicon. Susceptible to staining or localised corrosion from improper water chemistry, high chlorine, or saltwater exposure to welded joints.
- Requires precise water balance and frequent maintenance to prevent damage.
- Can be as low as 0.5mm thin and needs regular fresh water cleaning to avoid residual chlorine buildup in seams and crevices.
- Stainless steel look only and extremely hot top rim to the touch when in the sun.

Stainless Steel Pool with Vinyl Liner:

- Prone to wrinkles, fading, punctures, and leaks caused by wear, poor installation, or unbalanced water chemistry.
- Risk of floating liners due to water loss or high groundwater levels.
- Larger issues may require complete liner replacement, adding to overall upkeep costs.
- Usually used inside stainless steel plunge pools which have welded joints using silicon and can be as low as 0.5mm thin.

Precast Concrete Plunge Pools:

- Strong and customisable in size and shape.
- Chemically reactive, requiring frequent adjustments to maintain proper water balance.
- Very heavy (approx. 7,000kg), requiring cranes for installation, which may limit access to certain sites.
- Typically much more expensive than other materials.

Pure Plunge high-density polyethylene stands out for its lower maintenance needs, lightweight, and resilience in diverse water conditions, making it an excellent choice compared to other options.

WHAT ARE OUR CUSTOMERS SAYING?



Thanks Pure Plunge, We are so happy with our pool , we replaced an old spa on our deck with this pool and both Brent and Will at Pure Plunge were fantastic to deal with, I would highly recommend talking to them for your next purchase.

Russell, Sunshine Coast, QLD



Thanks Pure Plunge, We are so happy with our pool and it is going to give us great memories all year round. Couldnt thank you enough, the quality, service and installation exceeded my expectations.

Ben, Burraneer, NSW



The guys at Pure Plunge were great. Gave us all the info we needed and the delivery and install went as planned. We wanted a single moulded pool that didn't have welded joins or liners and we are so glad we went with a Pure Plunge pool.

Nate, Terry Hills, NSW



The team at Pure Plunge provided exceptional service from start to finish. Despite the difficult site access, the team carefully assessed photos of our property and devised a smart plan to ensure smooth and successful install. Highly recommend.

Cameron, Berowra, NSW



SUPPLY AND INSTALL



INSTALLATION

We offer installation service at time of delivery and is fast, cost effective and reliable. Installation includes the install and connection of our pump, filter, heater, light and chlorinator. Installation includes the supply of pressure pipe, fittings and valves as required.

DELIVERY

Our plunge pool delivery service includes a two-person team who will hand unload the pool and place it in your backyard, provided there is clear access to the desired location. For a delivery quote, please message us with your postcode.



PRICELIST



Product	Description	Price (inc gst)
Kirra 350 Therapy Bath	350ltr Therapy Bath 870mm x 680mm. Colour Windspray. Includes four large silicon ice moulds and drain outlet. No pump or filter.	\$995
Shelly 900 Splash Pool	900ltr Splash Pool 1500mm x 600mm. Colour Windspray. Includes two suction outlets, one inlet, Waterco pump, filter and drain outlet.	With / without pump, filter and fittings: \$3,995 \$1,295
Bells 1300 Plunge Pool	1300ltr Plunge Pool package including Waterco Supastream 100 pump and Waterco Trimline CC50 filter.	\$5,950
Byron 1950 Plunge Pool	1950ltr Plunge Pool package including Waterco Supastream 100 pump and Waterco Trimline CC50 filter.	\$7,950
Burleigh 5000 Plunge Pool	1950ltr Plunge Pool package including Waterco Supastream 100 pump and Waterco Trimline CC50 filter.	\$9,950
Plunge Pool Cover	Custom made insulated split fold cover with 8 x lockable straps.	\$1095
Splash Pool and Therapy Bath Cover	Custom made insulated split fold cover with 4 x lockable straps.	\$795
LED Light	LED pool light with a variety of colour options with the flick of a switch.	\$445
Pool Jet	Additional pool jet to improve water flow in the pool. Pool comes standard with one.	\$225
Heater	Waterco Electroheat 9kw pool heater.	\$3,450
Chlorinator	Waterco Hydrochlor magnesium chlorinator	\$1,550
Installation	Installation of filter, pump and any other accessories. Includes piping and valves at time of delivery.	\$750

****Delivery fees may apply**

APPROVED RESELLERS

Pure Plunge has joined forces with a select group of resellers to promote and sell our range of products. While we do sell directly to customers, you might also encounter our approved resellers.

No matter where you choose to buy, our priority is that you receive all the information you need to make an informed purchase.



Contact: Mitch
Location: Coffs Harbour
Delivery locations: Australia wide (excluding WA)
Email: sales@mrplungepools.com.au
Phone: 0478 100 297



Contact: Theo
Location: Brisbane
Delivery locations: Australia wide (excluding WA)
Email: sypqueensland@myyahoo.com
Phone: 0409 404 117



Contact: Dave
Location: Sydney
Delivery locations: Australia wide (excluding WA)
Email: contact@peninsulaplungepools.au
Phone: 0434 934 294
Website: www.peninsulaplungepools.au

GET IN TOUCH



sales@pureplunge.com.au



www.pureplunge.com.au



PO BOX 3013 Asquith NSW 2077



PURE PLUNGE

QR CODE

