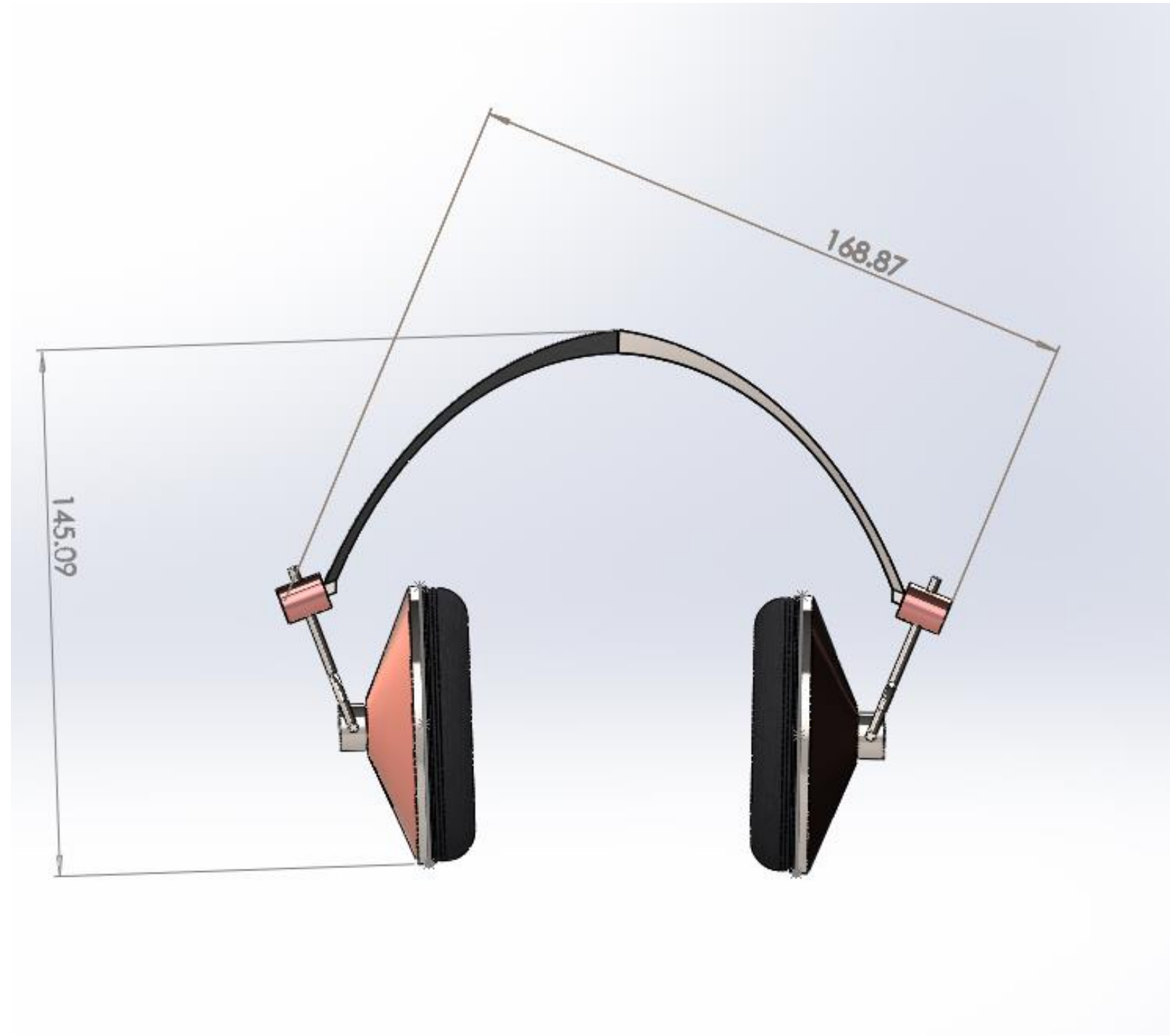
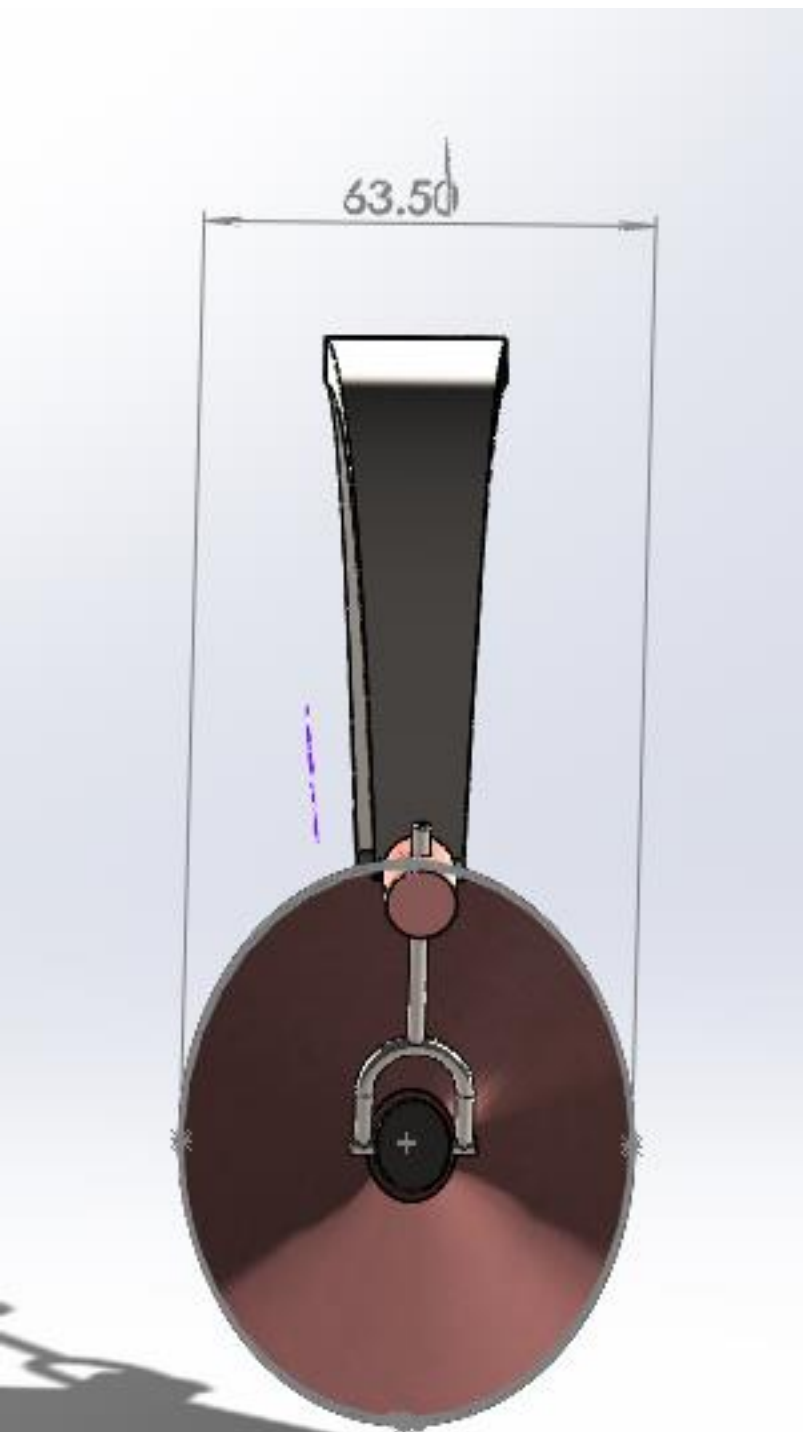


Nathan Bennett

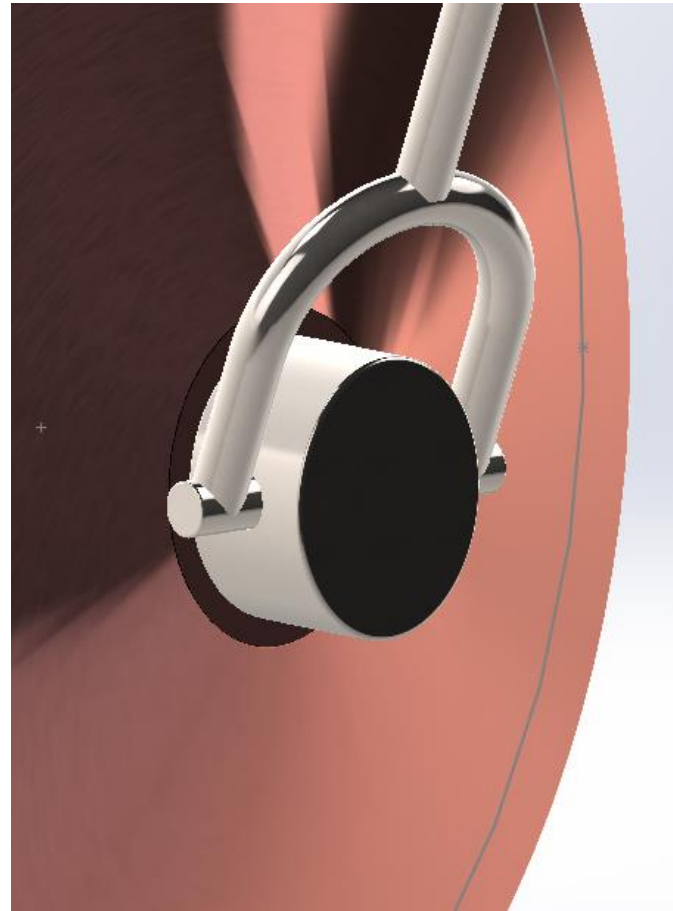
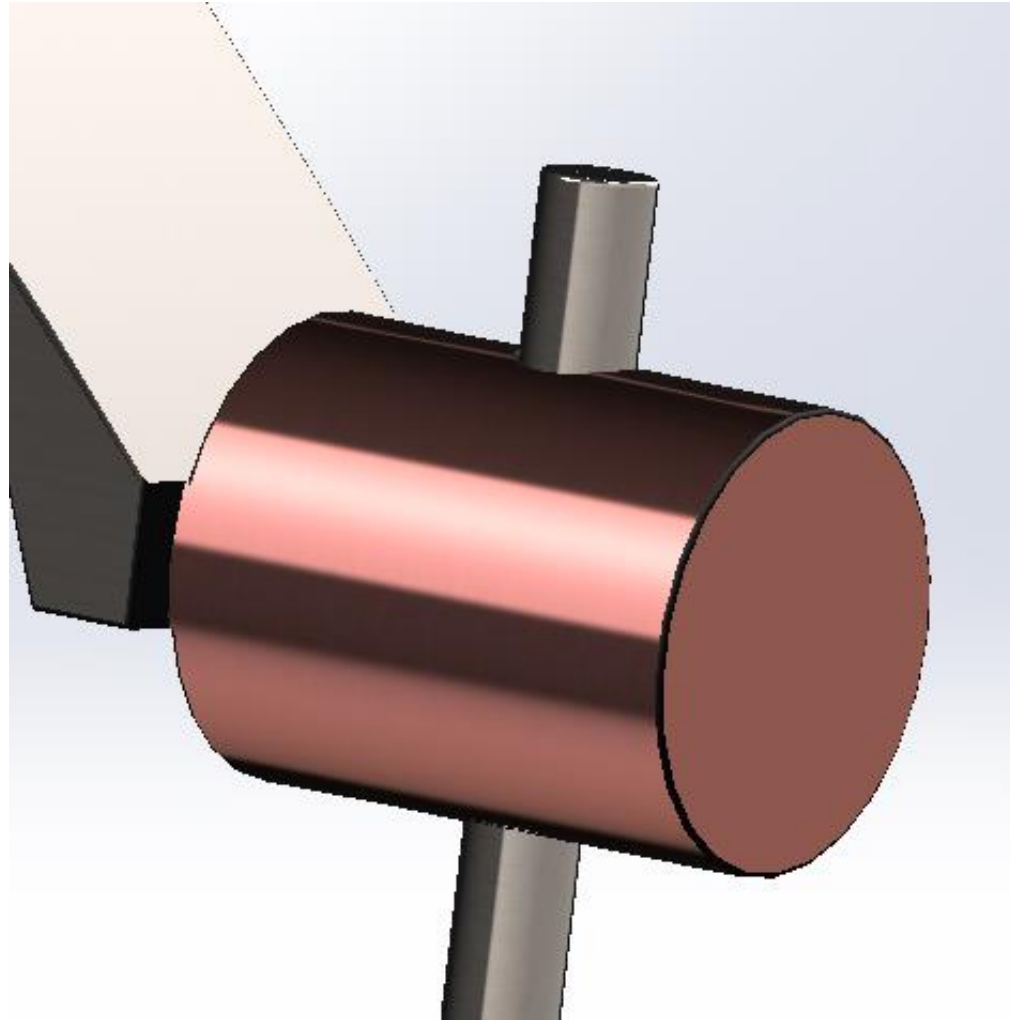
BbEENZ Design

Copper
Headphones





For this assignment I wanted to make an attractive pair of headphones that are simple and minimalistic. To achieve this goal I had to focus on making simplistic shapes that connect to each other in sophisticated ways. I decide to use the brushed copper and steel finish for its high-tech look, and its reflective properties. All in all it comes together as a well-balanced and clean design.



My Design utilized the basic over the ear headphone layout of two speakers connected by a band covering the top of the head. Above are some images of the features that I am most proud of. On the left you can see the hinges for the speakers, this was an especially challenging part of the project specifically when it came to mating and setting proper limits for each part to move. On the right you can see the basic outline of the speaker. I was happy with this feature, in that I was able to figure out and then realistically replicate the detailed contours that shape the speakers, making them appear as they would in real life.