



SUMMER-FALL 2022 NEWSLETTER

The Write of Way



MICK'S UPDATE



Dear all:

Welcome to our summer–fall newsletter, and what a summer we have had with great progress being made across all projects. I was fortunate to get out to all projects and see some of the world-class work being delivered by you all.

We have achieved much this summer. To mention a few accomplishments: we completed the Elk River project two weeks ahead of schedule and below target price. We also surpassed 60% completion on the TMEP project. With all clearing complete, grade is on-target for late fall completion. We surpassed 80% complete on the Coastal GasLink project with all mainline activities finished and special sections on-track for year-end completion of pipe installation.

Meanwhile, Elko is ramping up from a standing start due to regulatory delays. Now, we are completing access and clearing activities. We will be close to completion of all grade works by the end of the season, including the infamous flathead ridge. As all this is happening, we are also mobilizing three new projects!

Against the backdrop of numerous challenges—from environmental, regulatory, and labour shortages—the Surerus Murphy team has collaborated and found a way to deliver. This is a true testament to our Assured Delivery value. Equally, the resilience the team has shown, and the continued drive for safe delivery, has been noticed by clients.

We have been recognized on several occasions through receiving safety and quality awards by our key clients including TC Energy, TMEP and CGL.

The greatest recognition of our strong performance is the award of new work. We were recently awarded three new projects by TC Energy as part of the North Corridor Expansion Project totaling circa 70km of large diameter pipeline in Northern B.C. & Alberta. We just began mobilization for these projects and completion expected later in 2023.

Also, during the summer, we were awarded the Christina Lake above-ground piping project for Cenovus Energy. This is a great start for our Infrastructure Group, with many more opportunities presenting themselves in that space. Again, all these project awards would not be possible without the continued safe delivery on all our current projects this year and many years prior.

As a business we have much to look forward to and I am confident that by the year end we will be able to share several significant milestone achievements as well as new project awards that we are currently working on. This will give us visibility well into 2024 and beyond.

I thank you all for your continued great work and support and look forward to a safe and strong finish to 2022.

Thank you!

Mick Fitzpatrick
President, Surerus Murphy Joint Venture

04

Feature & Innovation Highlights

08

Project Spotlight

18

Safety Spotlight

20

Environmental Spotlight

TABLE OF CONTENTS

22

Indigenous Spotlight

24

Employee Spotlight

30

Wellness Spotlight

Constructing Pipelines in Mountainous Environments with Significant Steep Slopes Requires Planning, Accuracy, Process, and Trust.



FEATURE & INNOVATION HIGHLIGHTS

Anyone who has worked steep slopes knows that trust is essential. Trust for the strategy. Trust for the method. Trust for the machinery. Trust for the crew. Trust the Math.

Western Canada's mountain ranges contain some of the most spectacularly rugged, weather-beaten and majestic scenery in the world. At 4,000+ feet above sea level, the weather can be treacherous, the landscape dangerous, and the slopes steep. Yet, atop these mountains, you will find Surerus Murphy's construction crews safely building pipelines that provide access to our natural resources and fuel our country.

Safely building pipelines in this challenging terrain requires detailed planning and precise engineering long before shovels hit the ground. It also requires trust in the process—calculations are correct; assumptions are accurate; winch and slope parameters are carefully analyzed; traction conditions and impact loading requirements are considered; and overall, crews follow safety guidelines to a tee. Additionally, internal teams are each responsible for an aspect of construction and must have detailed conversations around best-practices and recommended processes for building in the perilous alpine environment.

Edwin Flannery, Superintendent, Steep Slopes, for Surerus Murphy at the Trans Mountain Expansion Project, explains, "First and foremost, we have to trust each other. High risk operations require a high level of trust that due diligence has been exercised in the planning. A prime example is during mechanical installation. The steep slope operators have to trust the engineer's calculations as they operate equipment up to 120,000lb on +35° inclines. Safety guides our strategy. It's the primary consideration when developing methodologies for each project. Project requirements often vary, and every slope is unique; however, our commitment to safe practices to achieve high-quality products remains consistent."

Brodie McLean, a Project Engineer for Surerus Murphy, expanded on the trust they've built within the steep slope program. "I recognized very early in the steep slope planning that we would be exposing our workers to risk levels not commonly encountered in pipeline construction. From that point on, it became my mission to mitigate these risks and ensure these workers go home every night to their loved ones. The crews trust that I have thoroughly considered all variables when developing the drawings that guide their operations."

This includes assessments of equipment operating weights, payloads, traction factors, impact factors, and factors of safety against sliding, winch pull, and wire rope strength to calculate permissible operating inclines and specify rigging capacities. This steep slope trust is a two-way street however, as I also trust the crews to execute my plans and operate within the limits of my drawings. Diligent rigging selection and inspections are fundamental to the steep slope drawings and I trust the crews in the field to do this correctly. Trust is key to risk management."

Steep slope engineers evolve, innovate, and maintain the integrity of their processes to keep pace with regulatory bodies and client requirements. Surerus Murphy's steep slope team developed a competency assessment program for operators and an industry leading rigging inspection program. Daily inspections are done on all steep slope rigging by qualified, competent personnel looking for any deficiencies that could compromise the integrity of any one piece of rigging. "We've completed over 50,000 rigging inspections and immediately tag-out any defective rigging for demolition or service. The crews have bought in from day one and do not take this lightly" Brodie said of the rigging inspections. The inspection criteria align with the American Society of Engineers (ASME) code and WorkSafeBC & Alberta Operational Health and Safety specifications.

"Our steep slope engineers consistently monitor progress to ensure that the strict requirements are understood and followed," stated Edwin. "The engineers trust the math and see the project through to completion."

Working on the slopes of the steepest mountains in the country, knowing the math calculations are accurate is important—just as important as is trusting the equipment and colleagues working beside you. For the engineers and planners responsible, numbers don't lie and equations that enable safe work become the bottom line.

Caterpillar Equipment Simulators Enable Operators to Gain New Skills in a Safe Way on Heavy Equipment

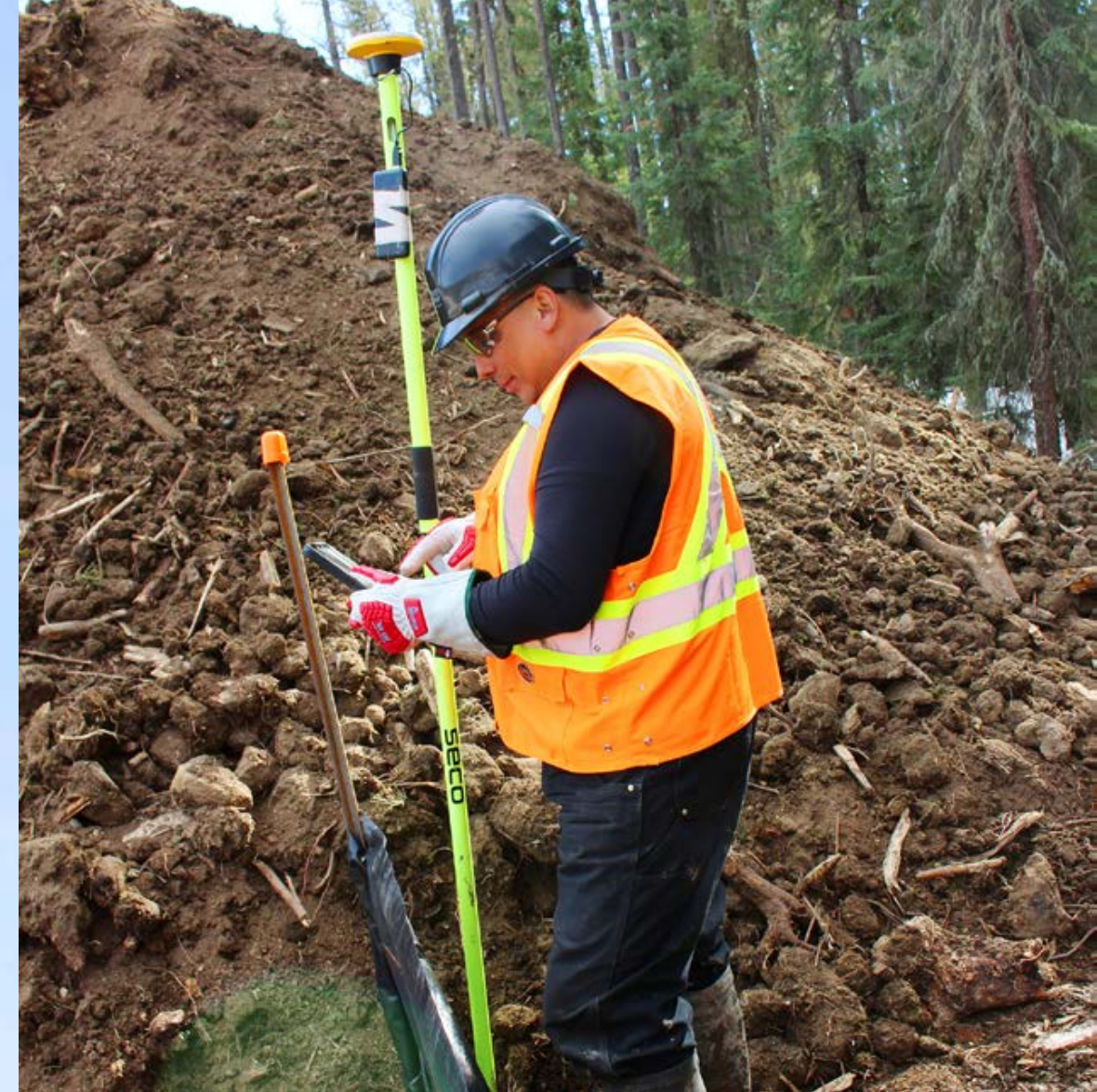
There is a catch-22 to gaining competency as a heavy equipment operator: one needs time on a machine to gain it, but it is hard to gain time without being competent.

Surerus Murphy is using two Caterpillar “Cat” Equipment Simulator training machines to provide laborers with experience operating big machinery that will let them grow their careers. Each simulator comes with a package that can replicate bulldozer or excavator use. The simulators have standard Cat controls, with digital screens in front and back to mirror a real-life setting and enable the user to perform activities common to a construction environment.

“Our focus is on developing our people,” says Project Director, Paul Kelly. “If our laborers can gain familiarity in the digital world, this experience will make their transition to actual equipment safer and more streamlined.”

Users create a profile allowing the machine to record the individual’s hours and performance. These metrics are then benchmarked against industry standard and demonstrate competency.

This is just one more way that Surerus Murphy supports its workers to develop their careers.



GIS Helps Surerus Murphy Work Responsibly

GIS is used to identify where protected trees are located on our right-of-way so we can work around them as much as possible.

Surerus Murphy uses GIS to plot at-risk tree species so our foremen, laborers and environmental advisors are aware of their location and can work around them. If a protected tree must be removed, we ensure we have the required Environment and Climate Change Canada permits and do not remove any biomass from where they fall to enable regrowth later.

“Technology is critical to our environmental planning,” says Michael Wilfley, Environmental Advisor. “It enables us to work proactively in a responsible way so that we protect flora, fauna and wildlife, and it is a tool we use in training our workers to recognize areas that require extra protection.”



Showing What Assured Delivery Means, Surerus Murphy's Achievements at Coastal GasLink Continue to Impress.

PROJECT SPOTLIGHT

Exceptional progress at CGL as Surerus Murphy completes the mainline and crews gained access to the daunting Headwall Special Section.

It has been a productive year on the Surerus Murphy's Coastal GasLink Project in Northern B.C. Having already completed 92km of pipeline installation for section one of the project, crews continue work managing pipeline installation for 48km for section two. In total, workers will install 140km of 48-inch pipeline for the Coastal GasLink Project.

In August 2022, the mainline installation for section two was completed. Along the route, there was no shortage of stunning features and challenging terrain to maneuver. With 114 water crossings and over 30 slopes, the right-of-way weaves its way through rugged and beautiful landscapes. No section has been as visually stunning as the Headwall Special Section located south of Chetwynd, B.C. Rob Beckner, Surerus Murphy General Superintendent, describes the encounter with this dominating and magnificent natural feature.

"This project featured many unique landscapes and technical operations. The final kilometre at the Headwall Special Section is a difficult landscape. The jagged and steep rock benches are up to 15m high and very imposing. We have planned for this project and section for a long time. To see the crew safely gain access while minimizing the impact to the area and maintaining our planned schedule is rewarding," said Rob. "A job well done, with safe operations and respect for the area on prominent display."

Following access to and over the headwall, the team began installing the pipeline. Work in the area continued with Erosion Sediment Control, hydrotesting, and progressive mechanical installation at various slopes and water crossings. In summer 2023, Surerus Murphy will return to finish reclamation and final clean-up.

Legacy Giving Initiative Supports Local Library Construction

Surerus Murphy teamed up with TC Energy's Coastal GasLink project to each provide \$50,000 for a total of \$100,000 to support the building of the new Chetwynd Public Library. The investment will be directed toward the library's safety features, including a fire alarm system, exterior lighting, emergency lighting, fire extinguishers and defibrillators.

Surerus Murphy's Chairman, Sean Surerus, was at the ground-breaking event in Chetwynd last week. At the event, Sean stated: "It is important to us to leave behind something that benefits the entire community and investing in a library—a place for community members to gather and learn—aligns well with our organizational priorities around collaboration and engagement. Being able to participate in the funding of the library is a wonderful way to commemorate the legacy of the Coastal GasLink project and its contractors in Chetwynd."

Through its partnership with Surerus Pipeline Inc., Surerus Murphy has been part of the community of Chetwynd for decades, back to the early days when Brian Surerus began the company in 1969.

Providing a legacy donation to the community members of Chetwynd is fitting, and that the building is a public library is even better. Libraries are a place where connections and community are built, and connections and community are what the people of Chetwynd have brought to Surerus Murphy.



Surerus Murphy Delivers Again

The Surerus Murphy team at the Coastal GasLink Project delivers meals to those in need in the District of Chetwynd. The project recently presented the organization with a cheque for \$2,645: enough to pay for over 100 meals.

At Surerus Murphy, we recognize that we are visitors to the area; as a result, we demonstrate our appreciation by giving to those in the community who need it the most and those who make the area an excellent place to live for others.



Chetwynd's Celebrated International Chainsaw Carving Championships Gets Surerus Murphy Support

Surerus Murphy sponsored the second-place winner (which was won by Ryan Williers from Edmonton, Alberta) as well as the sponsorship of two judges attending the event at the International Chainsaw Carving Championships in Chetwynd, B.C.

The event hosts 12 carvers—four from Canada, four from the USA and four international—who produce works of art over the course of a weekend as well as a 90-minute quick carve competition. Carvers create mythical creatures, statues of wildlife, artistic sculptures and more.

They are judged on technical difficulty, artistry, precision, and originality.

Many of the carvings stay in the community and have become part of Chetwynd's living history and culture.

"This is an important event for our community," says Allie Auger, Surerus Murphy's Indigenous and Local Engagement Advisor.

"Surerus Murphy sponsors events that bring people together and build connections and community, and this event is an example of that."



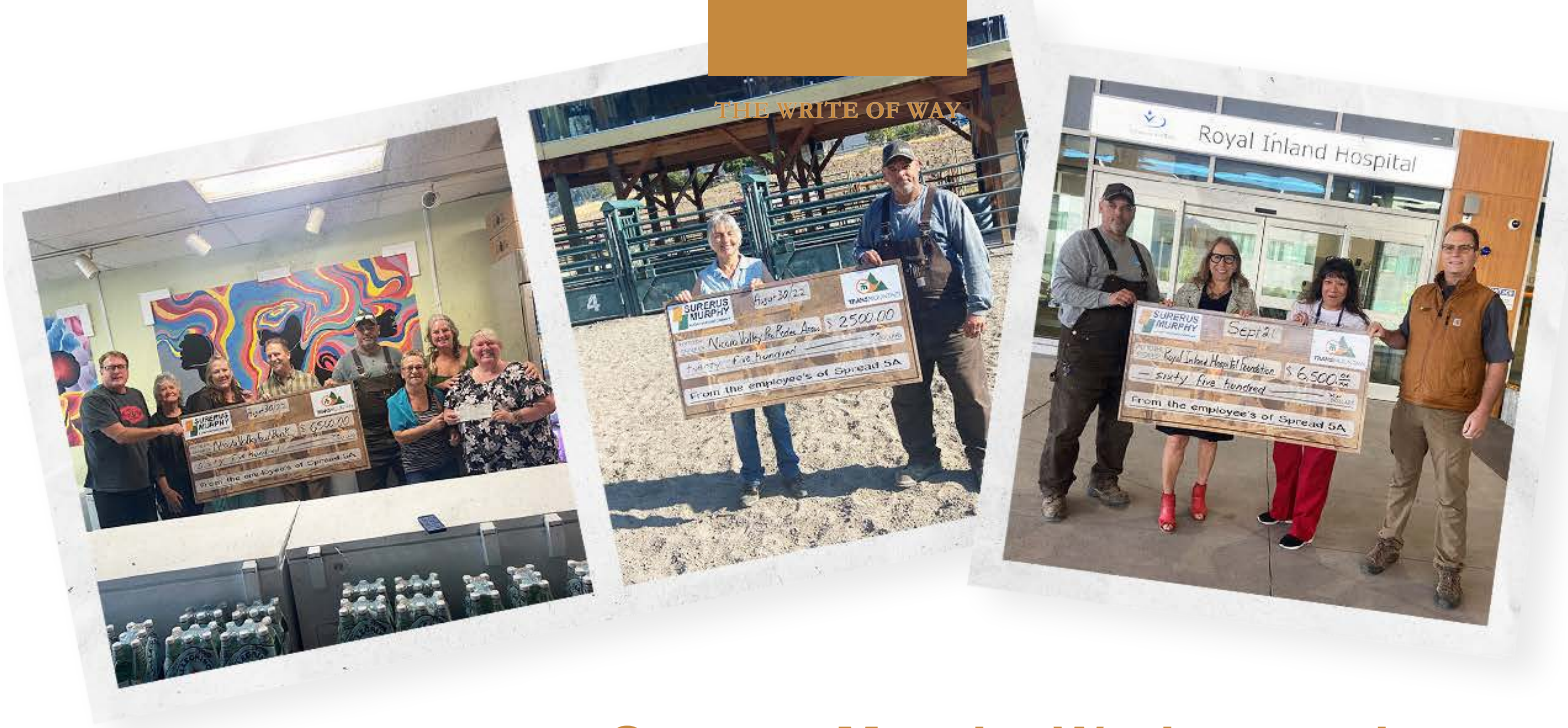
Surerus Murphy celebrated being 50% complete on Trans Mountain spread 5A

Surerus Murphy will lay 184km of 36-inch pipe from Black Pines to the Coquihalla Toll Booth outside of Hope, B.C.—and we are just over 50% complete. The total right-of-way is cleared, including 25km of heli-logging. At our peak, over 1,100 people worked on-site at a time. We completed welding on 95km of line pipe and blasted 250,000m³ of rock to facilitate grade and trench. We are currently undertaking 4.3km of 2.5m diameter micro-tunnel. Blasting is currently underway to construct the five shafts to launch four tunnel boring machines with depths of more than 25m.

This is a huge accomplishment, and one that has been completed to-date with a strong safety record with no major driving incidents. The project personnel

have traveled just over 17 million km to-date, equivalent to 21,250 trips from Kamloops to Edmonton. We have worked 3.5 million hours and have had zero lost-time injuries. This project team also has a strong focus on community engagement. Since 2020, the employees alone have raised over \$440,000 for the local community and with Surerus Murphy contributions, the total number is closer to one million invested locally.

Surerus Murphy's 50% milestone aligns with the project's overall 50% completion, which includes more than 412km of pipe in the ground, 574km of the pipeline right-of-way stripped and graded, 471km of pipe welded and the completion of 32 major trenchless crossings across the total project.



Surerus Murphy Workers at the Trans Mountain Project Show Their Huge Heart

Since June, these workers have gotten involved in several community initiatives, including:

- Fundraising for a colleague going through dialysis
- Supporting a co-worker whose child is ill and staying in hospital
- Supporting a colleague undergoing cancer treatments
- Supporting a local boy in Kamloops who has suffered a life-altering injury
- Ride-for-Dad, a fundraiser supporting prostate cancer research
- Giving campaign for Alzheimer Society
- United Way donations
- Lil Michif Family Support Services
- Kamloops International Film Festival Society: Indigenous Film Festival
- Kamloops Pride Week
- Nicola Valley Pro Rodeo
- Pitstop, Sunday meals for those battling homelessness
- Nicola Valley Food Bank
- Raise-a-Reader, supporting local literacy initiatives
- And more...

“It is well-known that pipeliners are a generous bunch, and Surerus Murphy’s Trans Mountain workers are head of the pack.”



The Strength and Resilience of a Young Woman Inspires the Name of a Tunnel Boring Machine

Surerus Murphy attended a naming and blessing ceremony for a tunnel boring machine (TBM) that will bore a 2.5m x 4.2km micro-tunnel in the Jacko Lake area of B.C. The TBM will bore through rock on compound curves at Surerus Murphy’s Trans Mountain pipeline section outside Kamloops.

The TBM was named Ali, representing the daughter of Corey Goulet, Executive Vice-President, Execution, for the Trans Mountain Expansion Project. At the ceremony, Ali’s father said that she was committed to Indigenous recognition and reconciliation. He also described her as a strong woman with a great personality who perseveres through challenges—it was a fitting choice.

While a subcontractor will manage the bore, Surerus Murphy will work to provide the contractor access to the work pads.

Additionally, Surerus Murphy will supervise subcontractors and remove earthworks following blasting activities. Once tunneling operations begin, Surerus Murphy will provide traffic management support, hauling 4m long x 2.5m diameter Reinforced Concrete Jacking Pipe, each weighing 40,000 lbs, while also removing all tailings from the tunneling operations.

In addition to naming the bore, an Indigenous blessing ceremony occurred at the site. Representatives from Stk’emlupsemc to Secwepemc Nation provided the blessing and spoke about the significance of the land. The area—known as Pipsell—is intimately entwined in the rich culture and history of the Secwepemc People. Boring under this land preserves the integrity of traditional lands while enabling construction progress.



Highly Visible Steep Slope Next to Kamloops Airport Install Completed Safely

With no lost-time injury during the installation that took 22 workers nine months to install, Surerus Murphy completed the pipe installation of Ord Hill outside of Kamloops, B.C.

Ord Hill is a 280m hill about a kilometre from the airport that runs from 26° at its top to 21° at its bottom. Making the work more complex was the volume of rock removed (over 17,000m³) and the tight work area.

The new ditch sat approximately six meters parallel to line one. Throughout the entire construction and installation, crews were visible via the nearby road 24/7, and onlookers often stopped or slowed to watch work progress. Ord Hill and Mission Flats steep slopes are only two of approximately twenty technically challenging steep slopes on the project. Mission Flats slope involved the use of a static mechanical winch for 35°, with limited workspace at the bottom for a valve site leading into a railway bore in solid rock.



Reliable, Safe Trucking and Logistics Enable Project Success

In all weather conditions and in rural locations, Surerus Murphy's Trucking and Logistics team have provided ongoing trucking service that has enabled our spread of the project's construction to successfully continue.

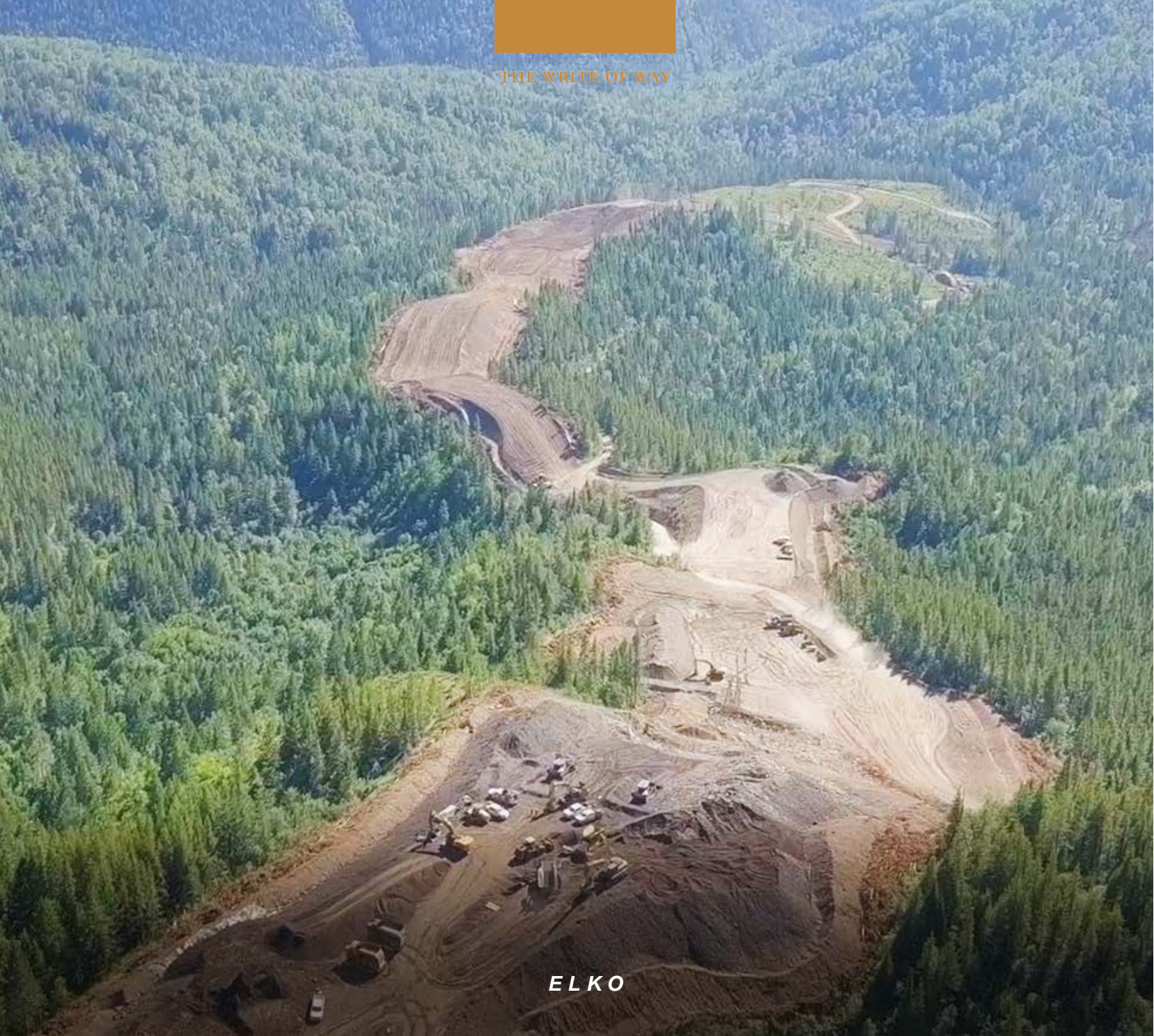
This crew is responsible for the transportation of essential logistical services that are needed to build the pipeline. They move, unload and often re-load and re-move heavy equipment and vast amounts of pipe to the construction area. They operate special maintenance equipment used to re-fuel and maintain the heavy equipment on-site and oversee the placing of access mats on the right-of-way's access roads.

Surerus Murphy's Trucking and Logistics team is staffed with approximately 35 workers at any given time and led by

Jim Edwards. Since the project began, they have transported approximately 9,500 loads to project sites. Almost 5,000 of these loads have involved hauling heavy equipment. The expertise of this crew enables other construction trades to build continuously and not be stalled by the complexity of working in rural, mountainous terrain without equipment provided in a timely manner.

Surerus Murphy's Trucking and Logistics team has clocked up over one million kilometres, while coordinating with approximately 60 traffic control people to ensure safe and efficient access and egress through to the highways and byways.





ELKO

Surerus Murphy Joint Venture Ramps-Up Its Newest Project, ELKO

Surerus Murphy was recently awarded a contract by TC Energy to construct 32km of 48-inch pipe as part of TC Energy's Foothills natural gas pipeline system east of Fernie, B.C. to support planned increases for natural gas exports to the US market.

Mobilization was in summer with ramp-up in the fall. Workers are joining the project from other Surerus Murphy projects. In addition to this, the team are campaigning to maximize local employment. It will be a three-season project due to the high elevation which will limit work to July through October, as outside of this time the route

is inaccessible due to high levels of snow cover. At our peak, we will employ approximately 650 workers on the project, targeting as much local employment as possible.

This project is in a rocky, rural mountainous range close to Fernie, B.C., approximately three hours south of Calgary. Unique to this project is the steep slope works and rock blasting requirements to facilitate construction. Our proven steep slope techniques, safety protocols, engineering support and specialist equipment modifications have given us an edge in this area.

Surerus Murphy Supports the Fernie Gravel Grind

This past summer, Surerus Murphy supported the Fernie Gravel Grind—a weekend-long festival with bike rides on scenic gravel routes. The festival brings an injection of investment and tourism to the region. Our volunteers supported the event with a pace car, sweep up vehicles for broken down bikes and stragglers at the rear, mobile medical treatment units for first aid support, water stops and cheering on the riders.

As a new project to the region, we have been building our presence in the Fernie/Elko region of B.C. as we are constructing 32km of 48-inch pipe as part of TC Energy's Foothills natural gas pipeline system.

"This was such a positive experience participating in this event that we are already committing to sponsor the Gravel Grind operationally next year. We would like to see this event bring in even more economic benefits to the local community," comments Paul Kelly, Surerus Murphy Project Director.

Supporting the local community and being part of its cultural fabric is one way that Surerus Murphy is a good corporate neighbor.

This project is off to a good start with strong community engagement.



Elk River Nears Project Completion

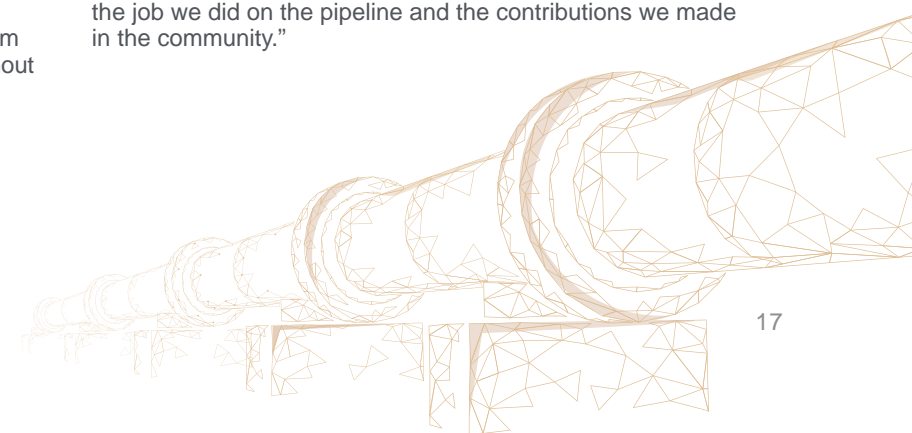
In fall of 2021 Surerus Murphy began mobilizing in Drayton Valley to oversee the Elk River Project. Just over one year later, the entirety of the pipeline is installed as the project nears completion, with only the final stages of testing, clean-up, and reclamation ahead.

Surerus Murphy installed 40km of 48-inch pipe in the Drayton Valley area for TC Energy's NGTL pipeline system. This project scope included multiple significant water crossings at the Brazeau, Nordegg and Elk Rivers. By working to schedule and maintaining a focus on safety, environment and quality, the team installed the pipeline within budget and ahead of schedule without any significant incidents.

Throughout the project, the team deepened its relationships with the local community. At the project's peak, 650 people were employed, with nearly 100 hired from the local region. In addition, the team invested funding and personal time into many community initiatives in Drayton Valley, including the rodeo, soup kitchen, minor hockey association,

Santas Anonymous, DV 100 bike race and improvements to the Drayton Valley Airport. In total, the team invested over \$15,000 in charities and events from the start of the project to-date.

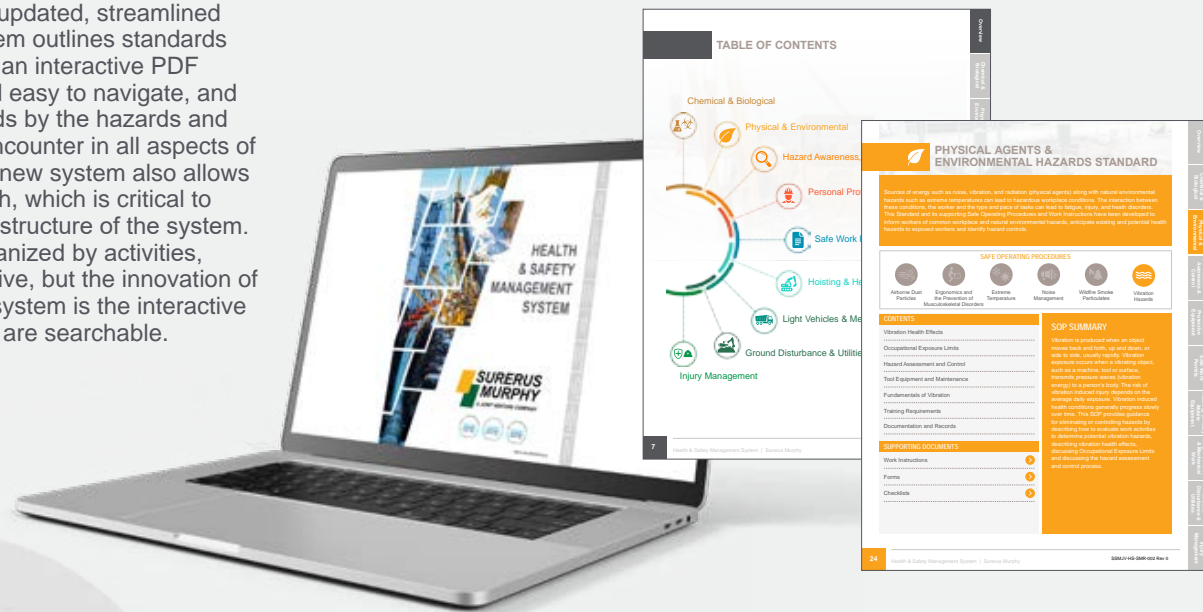
"Elk River demonstrated what it takes to deliver a high-quality project while remaining committed to a safe operation," said Alex Jaber, Surerus Murphy Project Manager. "Our project team grew into a family. The safe, efficient, and high-quality work reflected a positive and hard-working culture. Ultimately, I am proud of the job we did on the pipeline and the contributions we made in the community."



SAFETY SPOTLIGHT

Streamlined Health & Safety Management System Better Guides Work

Surerus Murphy's updated, streamlined management system outlines standards and procedures in an interactive PDF that is intuitive and easy to navigate, and calibrates standards by the hazards and controls that we encounter in all aspects of the business. The new system also allows for business growth, which is critical to the organizational structure of the system. Standards are organized by activities, making them intuitive, but the innovation of the management system is the interactive PDF in which they are searchable.



Idling Reduction Campaign Significantly Reduces Emissions

Since January 2022, Surerus Murphy's fleet idling performance has progressed with a steady reduction in idling times, which is excellent news for the organization's goal of a 25% reduction over 2021 numbers. The organization is committed to continued reduction in all Surerus Murphy light vehicles, requiring all drivers to embrace the campaign to reach the target set in the 2022 Objectives and Targets.

TIPS:

- Turn the engine off if it is parked for more than 10 seconds (except in traffic).
- Use remote car starters wisely to avoid excessive long warm-ups or cooling-off.
- In extreme heat or cold, start the engine only a few minutes before break to warm up or cool off occupants.
- During summer months, park in the shade—if possible.



Focus on Situational Awareness Key to Work-Safe Environment

Situational awareness means knowing what is happening around you but preparing for unexpected hazards from the broader environment is also essential. By being aware of your surroundings—including the environment not associated directly with your work—you can predict and prepare for the unexpected.

Surerus Murphy has adopted the 20+20+200 rule. Every 20 minutes, workers are asked to temporarily remove themselves from the task at-hand and take 20 seconds to look 200 meters to anticipate the evolving work conditions that could present a forthcoming hazard.

Complacency is a leading risk factor at construction work sites. Employees most likely to get injured are those with under three

months service or over 15 years of service, reinforcing the need to be always situationally aware.

Field Level Hazard Assessments (FLHA), used to identify and control hazards in designated work areas, have an additional purpose to empowers workers. They provide an opportunity to be aware of the work area and to ask questions, and to refuse unsafe work.

Our core value of Never Harm means we strive to never harm our business by protecting our people, the environment, and the community.



New Organizational Alberta Boilers Safety Association Manual Re-Certified

Surerus Murphy's revised Alberta Boilers Safety Association (ABSA) manual was recently re-certified by the local jurisdictional authority, enabling the Infrastructure Group to complete facility construction of CSA Z662 Elevated Temperature Pipelines and ASME 31.3 Process Piping. The re-certified manual also allows us to complete ASME B31.1 Boiler External Piping, ASME B31.1 Power Piping, Repair and Alteration of Category A & B Fittings.

As stated in the ABSA manual, a quality control lead will be on-site at infrastructure projects and has the responsibility of ensuring our policies and procedures are understood, implemented, and maintained. When working around pressure equipment, strict processes must be followed to work safely while delivering quality.

Surerus Murphy's ABSA manual is reviewed yearly and defines how the organization will work around pressure equipment in

a way that complies with the local jurisdictional authority. Quality Control and Quality Assurance are bound by the engineering design criteria, applicable construction codes and the safety codes act. Understanding these requirements is part of the Infrastructure Group's mandate. This group in particular works in environments where there is significant pressure piping, pressure vessels and boilers to be controlled for a safe work environment.

"This is an important certification for us," says Kevin MacDonald, Quality Manager, Infrastructure. "ABSA oversees the safety regulations for pressure equipment in Alberta, as dictated by the Safety Codes Act. We require this certification to build infrastructure facilities that supports the industry. Having this certification and understanding it inside and out is part of our due diligence."

ENVIRONMENTAL SPOTLIGHT



Demonstrating our value of Never Harm extends to how we protect amphibians

Surerus Murphy's spread on the Trans Mountain Expansion Project is home to many species of frogs. Of the project's 180km-long right-of-way, we have over 80km of fencing installed to protect amphibians. According to Jeff Timmins, an Environmental Manager on the project, we have relocated over 140,000 frogs since we began working on the project.

Our protection measures include using silt fencing as barriers to form corridors for movement, with buckets along the fence to collect the frogs for relocation who come up against the barrier. We also build bridges and underpasses to direct amphibians away from construction and construct fencing and gates for vehicle traffic that must be closed following entry to stop frogs from passing through.

According to Jeff, "Although the mitigation measures to protect the wildlife require significant resources to ensure safe and careful relocation, our dedication to wildlife protection is another example of how we demonstrate our value of Never Harm."

Supporting Root for Trees Helps Us Protect the Environment in an Important Community in Which Many Surerus Employees Live and Work

Root for Trees increases tree planting throughout the city with the help of local businesses and community groups. The annual target of this initiative is to plant an additional 45,000 trees.

Root for Trees plays a critical role in the landscape management process of naturalization. Over time, these grassy areas are planted with trees, shrubs and wildflowers and brought back to a more natural state, resulting in economic, environmental and quality of life benefits. Over the summer, the Edmonton team planted 150 trees and shrubs in urban areas.

"In addition to our people volunteering for Root for Trees, we are also introducing a fundraising initiative that will support the organization going forward," says Derek McLean, Sustainable Energy Manager. "Our 2022 focus is on reducing idling... for every dollar saved from last year's idling levels, Surerus Murphy will donate 25 cents to Root for Trees."



Over the last year, a strong effort in communication and engagement has resulted in strong environmental performance, and no regulatory fines, across all Surerus Murphy projects

Environmental stewardship is the responsibility of the entire project team, including leadership. At Surerus Murphy, the organization's leadership prioritizes environmental responsibility, and that focus is passed down to the project managers and construction leaders, which makes the work of the on-site environmental specialists easier as they are supported at all levels of the organization to work responsibly.

According to Hugo Mejias, Environmental Manager, "being environmentally careful is not a singular responsibility; it is everyone's duty, and it requires everyone's effort. It takes many hands to hold an environmental program, and the more people who are engaged with it, decreases environmental risk. The more people who are aware of risks and engage in ways to manage the impact to the environment, the better we are as builders—and this has been the secret to our success."

As Hugo explains, "We focus on engagement and communication. The more we explain what, where and why there is a risk, and the more people we communicate with, the more success we have."

Every project has several environmental specialists on-site working with construction crews to identify hazards and plan to work carefully around environmentally sensitive areas. This shows the partnership between planning, construction and environmental stewardship roles ensures a strategic approach to environmental performance.

The program's success can be measured in the lack of fines and penalties, alongside good reviews from Regulatory Audits that Surerus Murphy has had as an organization over the past year and longer.

10 GEARS OF THE "E" MACHINE

	Compliance with Federal, Provincial, and Municipal regulations during construction execution and projects specific deliverables		Waste Management - hazardous and non-hazardous waste, and recycling
	Water Management - human/industrial water use, water bodies, wetlands		Spill Management - prevention, response, clean-up, and reporting
	Soil Management - grading plans, soil salvaging for reclamation, and erosion and sediment control		Chemical Products Management - hazardous products, mud management, fuel and GHG reporting
	Vegetation Management - weed control, revegetation plans and biosecurity		Air Quality Management - dust control and monitoring programs
	Wildlife Management		Archaeological and Heritage Resources

Flying Over Right-of-Way Provides Visual Inspection Necessary in Erosion Control Management in Areas of Difficult Terrain

Erosion sediment control takes on new heights.

Critical to caring for the environment, is managing the right-of-way when the soil is wet from melting snow and spring rains. At Surerus Murphy, helicopters fly-in work crews and erosion control materials as vehicle access is problematic due to limited access and spring conditions.

"We fly over the right-of-way on a routine basis to identify issues or potential concerns where we could do additional erosion control maintenance. We prioritize and make a work plan that we review with leadership, and then the helicopter takes us to the

exact locations with the exact tools we need. It is just another way we implement additional resources to maintain environmental compliance," says Kelly Kautz, Environmental Coordinator. One area that the environmental team focuses on are the steep slopes, building in water bars (strategically placed zig-zag trenches that guide water off the right-of-way), where fibre logs and textile fabrics will slow down water flow and filter out sedimentation.

In June, the crews will turn their attention toward reclamation, replacing topsoil and replanting vegetation native to the area.

INDIGENOUS SPOTLIGHT



National Day of Truth and Reconciliation

Reconciliation includes a spirit of learning and listening—listening to understand the Indigenous journey and to realize more deeply the suffering they have endured.

Surerus Murphy Joint Venture recognized and observed September 30th as Canada's National Day for Truth and Reconciliation. At Surerus Murphy, it was a day to reflect on the painful and lasting impacts of residential schools in Canada and to honour those that never returned home, the survivors, the many families and communities that suffered tremendous loss. The National Day for Truth and Reconciliation is an opportunity for us all to learn more, and to commit ourselves to the work ahead in the spirit of meaningful reconciliation.

"September 30th is a meaningful day for all of us at Surerus Murphy", said Sean Surerus, Chairman, Surerus Murphy. "Reconciliation is important because it demonstrates humanity and kindness toward others—it is a living example of engagement and building community."

Surerus Murphy marked the day by learning from Indigenous leaders from the Sunrise Healing Lodge, who shared stories about Indigenous history with staff. In Calgary, Sunrise is the only addictions treatment center where Indigenous culture and spirituality are used harmoniously with the 12 Steps pioneered by Alcoholics Anonymous for the treatment of addiction.

Staff at project sites could watch the opportunity later, as it was recorded and made available for viewing. Following the learning opportunity, numerous staff ventured to the Sunrise Healing Lodge for a volunteer opportunity.

In addition, this year, Surerus Murphy launched an Indigenous Training Fund (ITF) to support the professional development of Indigenous employees who currently work for the organization. The ITF provides the necessary skills training and work experience for career development to support Indigenous employees to progress into senior level positions.



Hiring Local Yields Good Talent

One of Surerus Murphy's commitments to the communities in which we work is to hire local when we can. We've successfully been able to meet this commitment at our project sites—case in point, our relationship with Barry Bennett who runs Brush and Shine Mobile Pressure Washing based in Kamloops, B.C.

Barry has been under contract with Surerus Murphy since spring 2020, providing pressure washing and cleaning services for heavy equipment as they return from the right-of-way or site offices and laydown areas. Last year, Barry expanded his service offerings to include snow removal in these areas, as well as Fire

Suppression trailers used by Surerus Murphy on the right-of-way at the Trans Mountain Expansion Project.

Barry is proud to have Surerus Murphy as a client. According to him, "Surerus Murphy stepped up and honoured their word, and I can't ask for much more than that."

Barry is a Tk'emlups te Secwepemc member, which is an Indigenous community near to Kamloops and one of the communities that Surerus Murphy regularly engages with regarding our work on the Trans Mountain Expansion Project.



Training Unites the Indigenous and Community Engagement Team on Employing Consistent Hiring Practices

Surerus Murphy's Indigenous and Community Engagement Team met to discuss and train on the hiring process used to ensure Indigenous communities connected to all organizational projects are represented.

The team's hiring practices within Indigenous communities is unique in that potential hires are identified even if there is not a job availability. The organization then establishes contact and builds a relationship with these individuals so that when a position opens, the recruitment process has already been handled. Being able to manage local hires in this way requires a robust data management system that all advisors are required to know. As the organization grows, the Indigenous and Community Engagement team is positioned to handle new projects.

EMPLOYEE SPOTLIGHT

Christopher Oliver is Surerus Murphy’s General Services Coordinator, responsible for managing Surerus Murphy’s Sukunka and Mt. Merrick camps in Northern B.C.

Entertaining is in Christopher Oliver’s DNA.

Christopher’s job is to oversee the workforce who runs the camps, working with the third-party contractors to ensure meals are high quality—above industry standards; housekeeping is top-notch; entertainment is varied with options for all personalities; and camp bookings are scheduled and organized.

He also ensures everyone who works at the camp, from the cooks to the cleaners, does their job with safety in mind, focusing on the organizational value of Never Harm.

Christopher grew up around restaurants, cafes, and bars. His grandfather, a prominent businessman from Saskatoon, owned a popular restaurant in town, ran the local curling rink and managed the baseball team.

He remembers his grandfather’s ability to affably chat with anyone and make that person feel like the most important person in the world for that conversation. Inspired by him, Christopher followed in his footsteps.

As soon as he could, Christopher found work in the bar business.

“I rose through the ranks quickly. In hospitality, each day is different, with a new challenge. It taught me to prioritize and use my time wisely—and these are skills I use today,” explains Christopher. “I am also quick-on-my-feet and can solve situations fast while calming the personalities involved. This is also a skill I learned from the fast-pace, issue-a-minute industry I came from.”

After using his skills in a variety of roles to run other’s people’s businesses—from restaurants, bars, nightclubs and hotels—Christopher became an entrepreneur, owning and operating his own restaurant—a Louisiana-themed bar and grill in Saskatoon. The successful restaurant grew in scope to include a pub and a night club.

“I understood the care that went into decision-making on a different level when it was my own money on the line.”

“Every day is different, and I like that. It’s fun.”

Eventually, Christopher wanted a new challenge and used the collective skills he learned as a business owner and hospitality manager to run camps. As a camp manager, he has held increasingly senior roles with different organizations and different responsibilities, but all included a combination of camp construction and dismantling, hospitality services, budgeting, and scheduling and auditing.

After handling these roles well, Christopher became an operations manager, managing the on-site camp supervisors.

In 2019, Surerus Murphy and Christopher teamed up as Surerus Murphy won a pipeline construction and installation project in rural B.C. The organization needed a camp to house its workers, offices for office-based field workers, and guaranteed 24/7 communications for all those working on the right-of-way. Christopher used his contacts and knowledge of camp operations to create a camp culture with a focus on safety, fun and variety.

In addition to ensuring camps had good food, well-stocked gyms, dedicated housekeeping, strong internet and a formalized safety culture within the contract staff operations, Christopher also considered seasonal camp use. During winter, camps have hockey rinks, ski trails and fire pits. In the summer camps have hiking trails, fishing holes and access to greenspace.

“Every day is different, and I like that. It’s fun,” Christopher says.

It all goes back to Christopher’s hospitality skills he learned from his grandfather—treat everyone like they matter.

“In my job, I get to meet new people every day, and usually the people I meet are interesting.” It makes his job unique.



Blaire MacNeil's Best Career Decision Was to Follow a Billboard Advertising Prosperity Out West

One afternoon, soon after graduating from high school and while hanging out with friends in rural Cape Breton in 1980, a billboard advertising *work and prosperity in Alberta* caught Blaire MacNeil's attention. In his hometown of Howie Centre, west of Sydney, Nova Scotia, construction jobs were hard to come by as there was minimal employee turnover.

He followed the sign, arriving in Fort McMurray and quickly found work as a cement truck driver working across industries, spanning oil and gas and other heavy industries, commercial and residential uses. One of his cement runs took him to an energy facility where he saw pipeliners at work. That day, he drove to the union headquarters and became a pipeline laborer.

"It was the opportunity to work outside, every day, that originally attracted me to the industry," comments Blaire, now the Senior Construction Manager for the Facilities & Infrastructure team at Surerus Murphy and working with the team building the organization's new facilities' project at Christina Lake in Northern Alberta.

"I have always been magnetically pulled toward the open road. Being able to work in nature and just be surrounded by it—often in rural locations—was the best way for me to spend my day. I love pipelining."

Blaire worked hard and rose fast through the ranks, getting leadership experience early in his career. "You can be your best mentor if you watch how other people do it and learn from them," he says.

As his career progressed, he had the itch to take additional training and become more certified. He went to NAIT to become a pipefitter and through the apprenticeship program, worked in fabrication shops and building chemical piping modules for the oil and gas industry. By the mid-1990s, Blaire was working as a Foreman building compressor stations, pump stations, Steam Assisted Gravity Drainage (SAG-D) facilities for energy companies.

He traveled around Alberta and British Columbia, working at project sites building pipelines and facilities to service Canada's energy industry. In the late 1990s, he worked on a \$92-million natural gas facility that was one of the main infrastructure projects for Canada at the time. On this project, he met Mark Atchison, now Surerus Murphy's Operations Director and lead of the Facilities & Infrastructure team. It would be a friendship that lasted the test of time, with both men checking in on each other from time-to-time and testing the idea of working together in the future.

It would take nearly 20 years and several jobs later that Blaire and Mark finally made that happen. In the interim, Blaire worked for a construction company that helped build gas storage facilities, gas plants, steam lines, battery sites, refineries and more for most of Canada's larger energy companies, including Husky, Cenovus, Petro-Canada, CNRL, Suncor and more. Then, about a year ago, soon after Mark joined Surerus Murphy, he was tasked with building up the Facilities & Infrastructure team. Sure enough, Blaire got the call asking him to consider being one of Mark's first hires.



"It took no convincing at all," Blaire says. "Mark was in the process of bringing over some of the best team players I have ever worked with in my entire career. I knew enough to know that this was an opportunity of a lifetime, and I jumped at the chance."

Since joining Surerus Murphy and helping the organization launch its Facilities & Infrastructure team with fellow colleagues who also have significant, well-rounded experience overseeing construction projects in the energy and mining industries, the Facilities & Infrastructure team has grown and begun working on its own facilities' construction projects.

Currently, Blaire is managing the construction of 15.2km of above-ground gathering lines at a SAG-D facility in northern Alberta. The project consists of steam distribution, production gathering, casing gas and fuel gas lines, and requires weld expertise to build.

"It is a great project to showcase Surerus Murphy's welding efficiencies with tailored procedures using RMD, FCAW welding methods with M300C mechanized units," explains Blaire.

And for him, it also takes him back on the open road, where he will be surrounded by the Boreal Forest, able to appreciate Mother Nature, and breathe fully. "You just can't put a country boy in the city for long. Nature fulfills me—that and my family."

A country billboard selling Alberta directed Blaire west, where he built his future as a leader in the infrastructure construction industry. His journey eventually led him to Surerus Murphy where he rekindled his work friendships and can play a leadership role in Canada's important energy infrastructure construction projects.



Mathew Hazelwood Grows His Career at Surerus Murphy

Matthew is a Tk'emlups te Secwepemc member who joined Surerus Murphy in August 2020 and has solidified himself as a leader.

Surerus Murphy offers employees continuous growth and hires local talent whenever possible. This balance builds a strong foundation of qualified, eager, diverse, and exceptional staff across our projects. Matthew Hazelwood is an outstanding example of a local hire who has grown his career within the Surerus Murphy 5A spread at the Trans Mountain Expansion Project in the Kamloops region of B.C.

Where were you raised?

I was raised in Pritchard, about 45 mins east of Kamloops. I spent my adolescence on my grandparent's cattle ranch learning about working with my hands and developing my skills in running machinery, such as tractors and other heavy equipment.

Take us through your journey with Surerus Murphy.

I joined Surerus Murphy for the first time in 2020 on the Trans Mountain Expansion Project. The first time I drove into the Cando yard in Kamloops, I saw all the pieces of heavy equipment and became awed by how large of a company Surerus Murphy is. I had only worked for small pipe companies around Kamloops, which seem minuscule compared to Surerus Murphy.

Initially, I was hired as a mechanic's apprentice for Surerus Murphy, but someone else filled the position, and I became a general laborer. I worked with various crews, including the rock blasting, hydro-vac, and utility crews. I am back with the rock blasting crew and have been promoted to the Lead Hand position.

I coordinate daily paperwork, occasionally run toolbox meetings, and ensure equipment and the operators have everything they need to complete their daily tasks. I supervise and check on laborers to ensure they know their responsibilities and that everyone is completing their work safely and correctly.

What advice would you give someone looking to move up the ranks with Surerus Murphy?

Work hard but most importantly, complete your job safely. If you are trying your absolute best, the bosses will notice, and you will get your chance to prove you deserve that promotion

What makes you laugh, and why?

Probably getting the chance to work with my older sister. I would never have imagined working alongside her would be this much fun; we joke and enjoy the usual sibling banter throughout the day. Teaching and mentoring her has been a privilege; she makes me proud every day.



What do you like to do in your spare time, away from the right-of-way?

I like to get out on the dirt roads, either in my truck or dirt bike, every chance I can. I love visiting my grandparents, spending time with them, and seeing how life is treating them. Pictures and videos from work always pique my grandpa's attention.

He will always tell me stories from back in his working days and being able to hear stories like that is exceptionally special. I am taking business management and psychology from TRU, trying to broaden my knowledge and learn new things.

What do you hope to accomplish next with Surerus Murphy?

I hope to keep advancing with Surerus Murphy through hard work and be a part of future projects with the company. Not only that, but I plan to expand my knowledge through university, with the aspiration to puts a little more brain behind the brawn of in-field work.



WELLNESS SPOTLIGHT



Developing Strong Emotional Intelligence Muscles is a Stress Relief Tactic on the Right-of-Way

Emotional Intelligence—otherwise known as EQ—guides peoples' ability to understand, use, and manage their emotions in positive ways to relieve stress, communicate effectively, empathize with others, overcome challenges, and defuse conflict. These abilities are crucial to understanding the best emotional approach, especially in stressful situations. On a right-of-way where work

is remote, safety sensitive, often in inclement weather and frequently on a deadline, reacting to other's with emotional intelligence maintains a positive work environment. The more we learn about our EQ, the better we can perform.

Managing Stress and Anxiety is Important to Overall Health

While occasional anxiety is a normal part of life, chronic anxiety should not be. Chronic anxiety can interfere with one's ability to sleep, perform at work and maintain healthy relationships. Chronic anxiety occurs when someone's worry is exaggerated and is often unprovoked and is consistent, and there is no break.

Physical symptoms may include difficulty concentrating, fatigue, being nervous, panic, tension, and restlessness. It is important to

seek help when dealing with chronic anxiety. Chronic anxiety is different from occasional anxiety, which is one's brain reacting to a stressor and alerting an individual to potential danger. Risk factors for having an anxiety disorder include having had past trauma, low self-esteem, substance abuse, having experienced a negative life event, and a history of mental health disorders. Please seek help if you are experiencing any of the listed symptoms or believe you may have chronic anxiety.

WELLNESS: FUNCTIONING OPTIMALLY IN YOUR CURRENT ENVIRONMENT.



MENTAL RESILIENCE



PHYSICAL WELLBEING



SOCIAL ENGAGEMENT



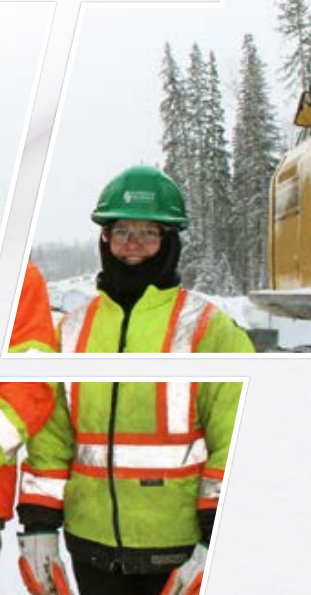
FINANCIAL FITNESS

Fundraising for Cancer Research

This summer, several Surerus Murphy employees rode in Enbridge's Tour Alberta for Cancer fundraising initiative raising approximately \$20,000 for cancer research and patient support initiatives. We also funded a pit stop for all riders, providing ice to heal aching joints, and nourishing beverages/food. This is Surerus Murphy's fifth year being involved in this event and over the years, we have raised most of our funds through employee donations. "We all have a cancer story—either we have fought it ourselves or we know someone who has. Fighting cancer with the right patient supports and investing in cancer research is an ongoing need. This is such an easy initiative to back," says Mick Fitzpatrick, President of Surerus Murphy and rider in the Tour Alberta for Cancer.



**SURERUS
MURPHY**
A JOINT VENTURE COMPANY



2200, 605 - 5th Avenue SW
Calgary, AB T2P 3H5
T: 403.930.1358
E: info@surerus-murphy.com
www.surerus-murphy.com