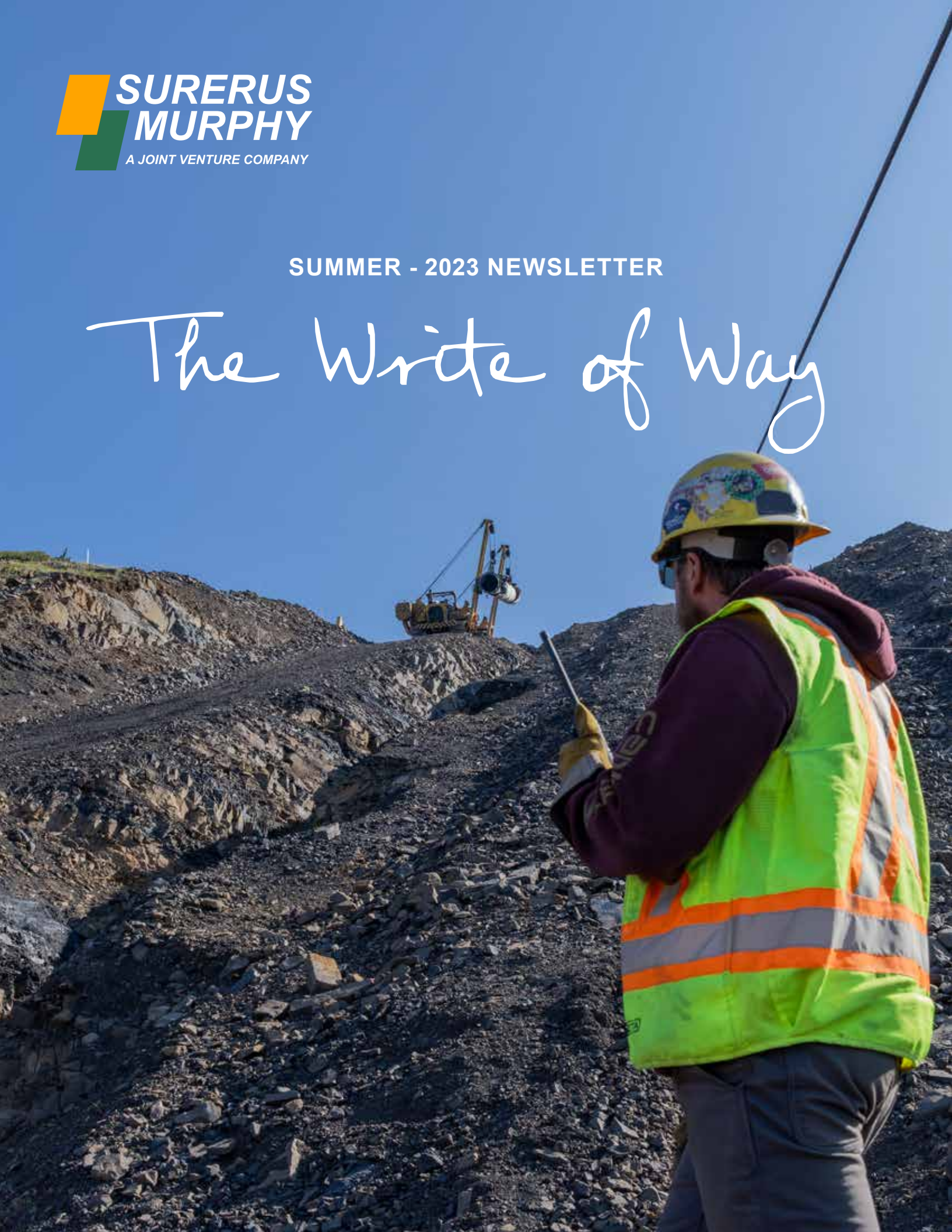




SUMMER - 2023 NEWSLETTER

# The Write of Way



## MICK'S UPDATE



Dear Friends,

As I write this, we are entering the end stages of two of Canada's largest infrastructure construction projects in recent history of which we had the privilege to be part of—the Trans Mountain Expansion Project and Coastal GasLink.

(Trans Mountain Expansion Project twins an existing 1,150 km pipeline that transports crude oil from Strathcona County, B.C. to Burnaby, B.C. and increases capacity to 890,000 barrels per day. Coastal GasLink is a 670 km natural gas pipeline with a capacity to deliver 2.1 billion cubic feet of gas per day from Dawson Creek, B.C. to Kitimat, B.C. to be converted to LNG and exported.)

We are in full swing at our Elko and Lundbreck projects, both located near Fernie, B.C. and part of TC Energy's NGTL network. We are delivering at Saturn and have recently completed our work at Bear Canyon and Sunrise, companion projects to Saturn, also part of TC Energy's NGTL network.

We completed our facilities construction work installing overground pipelines at a northern Alberta oil sands facility. This expansion will provide an additional 65,000 barrels per day of crude oil production capacity and our contribution was over 20 kms of side-by-side lines.

Needless to say, it has been a busy time!

Today, we are at the early stages of starting work on the Eagle Mountain Woodfibre pipeline project, working with Fortis B.C. This project will deliver natural gas from Coquitlam, B.C. to Squamish, B.C. where it will feed into an LNG terminal for export.

All eyes are looking forward to Pathways Alliance. This alliance is a co-operative effort of Canada's leading producing companies, Indigenous communities, government, and other key stakeholders to build a pipeline and facilities to transport and store carbon, enabling Canada's transition zero greenhouse gas emissions from the energy industry by 2050 while still supplying markets with needed resources. This collective project signals the start of the industry's determination to transition to a low-carbon future.

We are grateful for everyone's hard work and commitment to working safely as we complete these mega-projects and look toward the next ones. We have demonstrated that it is possible to work in rugged terrain, inclement weather and in rural conditions and still work safely. Thank you all for your perseverance and hard work, and especially for your commitment to safety.

Best,

**Mick Fitzpatrick**  
President, Surerus Murphy Joint Venture



## Achieving 100% Pipe Install Marks the Last of Many Significant Achievements

A project as technically difficult as our sections 1 and 2 of the Coastal GasLink (CGL) pipeline project has many milestones worth celebrating. Milestones range from the feeling of success after clearing a path to laying the pipe along a remote and very rugged mountainous terrain and up steep, rocky slopes, to reclaiming this land so that when we leave the area, it is returned to its near original state using the same soil and flora to protect the integrity of the land.

Recently, many Surerus Murphy crews were involved in the installation of the last joint in section 2 of the pipeline, testing it to ensure it is structurally sound and performing the final tie-in “golden welds” post testing—the last step in a journey toward mechanical completion.

(During testing, some sections of pipe are isolated for a pressure test. Following the pressure test, a series of pipeline inline inspection gauges—known as pigs—are run down the test pipe section to measure wall thickness and integrity and then to dry the pipe and dehumidify it for use. Following this, the test section of pipe is tied-in to the mainline. The welds that perform the final tie-in are called “golden welds”.)

Testing is complex and requires a variety of crews to complete. The final test on our section of the project was completed near the headwall, the most remote and rocky area of our sections. For the testing, parts of the right-of-way had to be closed to traffic with work areas, at times, only accessible via helicopter.

“It is hard to articulate just how technically difficult our spreads on this project have been,” commented Rob Beckner, Superintendent. “This is wild, rugged landscape at the complete submission of Mother Nature, and up here, Mother Nature changes her mind all the time.”

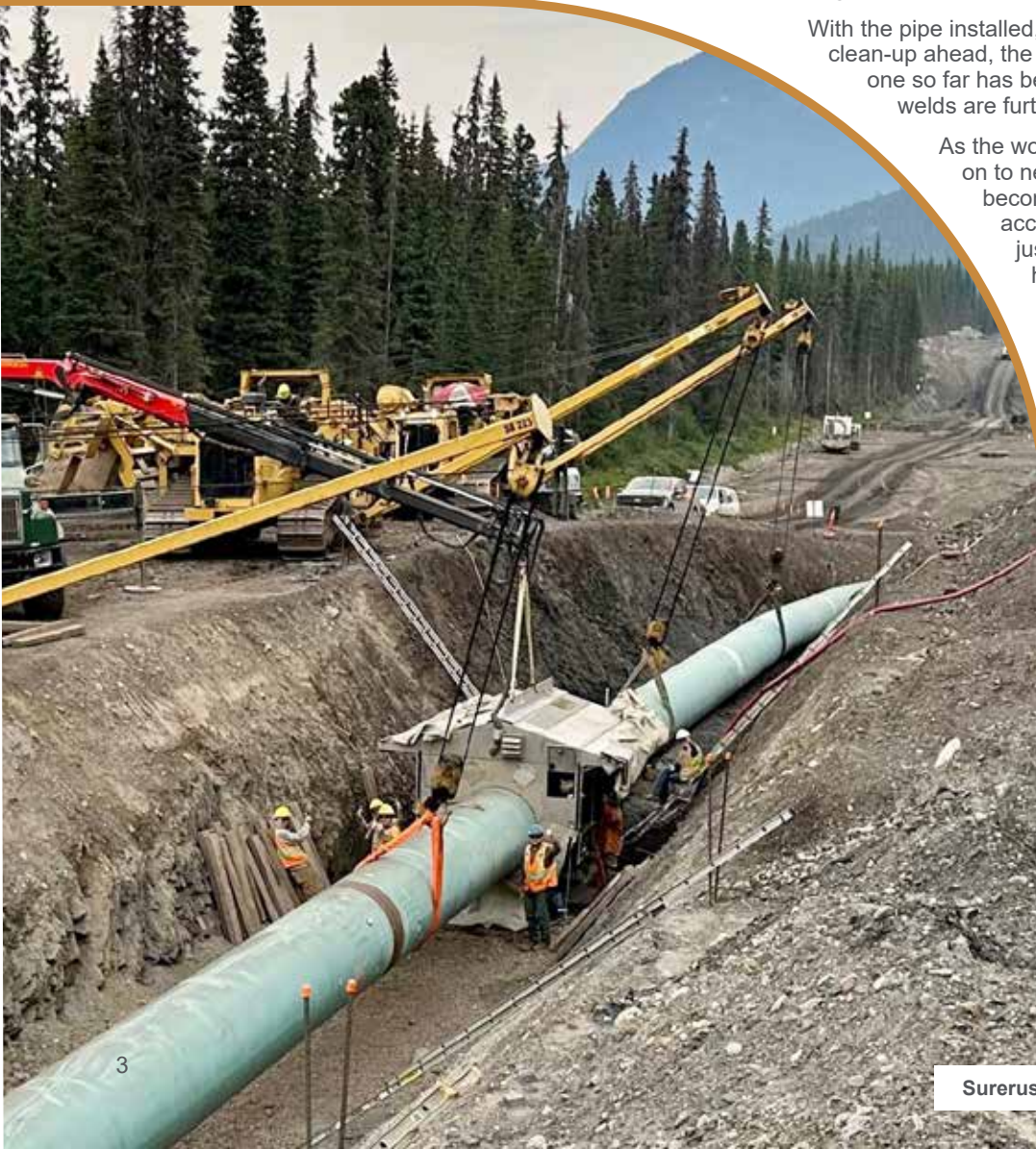
Rob added, “I’m so proud that this spread has brought up a lot of workers; it has been a training ground teaching forepersons to become leaders, and tradespeople in gaining invaluable experience having worked in such steep slope and technically challenging terrain. Out here, safety can never be anything but top-of-mind.”

Project Engineer Stephen Massecar echoed Rob’s comments saying, “The testing crew exemplified our Never Harm value as they’ve safely completed 27 test sections in some of the most difficult terrain Surerus Murphy has constructed through. It is a huge accomplishment across the business.”

With the pipe installed, testing complete and just reclamation and clean-up ahead, the project is running out of milestones. Each one so far has been an accomplishment, and the golden welds are further crowning achievement.

As the work winds down and crews begin to move on to new projects, those left remaining are becoming reflective of the magnitude of the accomplishments. “You don’t want to say it is just another day in the office, because up here, anything can happen at any time,” reflected Alan Atkinson, Project Director. “Even with all the challenges we’ve overcome, as this project winds down, the enthusiasm and excitement for all we have accomplished here remains undiminished. I count myself amongst the many here that are truly grateful for being given the opportunity to be a part of such a special, truly legacy project. Calling such a welcoming community home for the past 4-5 years has only added to everyone’s positive experience here, and it will be missed. When it’s wrapped, I will carry this experience with me, professionally and personally.”

Cleanup and reclamation is ongoing throughout the remainder of the year.





## Surerus Murphy Crew's Success at Headwall

The Surerus Murphy team at the Coastal GasLink (CGL) pipeline project is making impressive progress approaching the completion of Section 2. The headwall is treacherous, mountainous terrain that requires unwavering focus on safety and environmental protection to install the 48-inch pipe.

The technical difficulty of the headwall presented a significant challenge, but Surerus Murphy crews handled it with expertise. Chris Mullan, Special Section Superintendent, and his crew ensure a smooth installation process despite the demanding nature of the task.

Chris commends his team's efficiency: "We have momentum, and despite the challenges, the crews operate with great coordination." He also acknowledges the crew's dedication to maintaining an organized right-of-way and the commitment to safety at the headwall section, even in tight and challenging conditions.

The Steep Slopes crew, led by Foreman Mark Evans, deserves recognition for its installation of anchors and for employing heavy-duty winch systems to navigate extreme conditions safely. Mark's team steps up for whatever is asked and operates under tight timelines to ensure safe access to difficult locations on the line.

"These guys are a stand-out crew who accomplish tasks efficiently and prioritize safety and quality at all times. Their work sets a high standard for mountainous pipeline projects, and they should be proud of their world-class contributions," reflects Mark.

By delivering a high-quality product with a strong focus on safety and environmental protection, the team at CGL demonstrates what it takes to be an exceptional pipeliner in a mountainous region. Their remarkable progress at the headwall showcases their precision and professionalism.



## Delivering Environmental Excellence at Coastal GasLink

Clean-up and reclamation are in full swing at Surerus Murphy's Coastal GasLink (CGL) pipeline project, where we have just installed the pipe at the technically difficult and steep mountainous terrain of the headwall section of our spread.

Throughout the right-of-way (ROW), our unwavering commitment to environmental protection is evident. Randy Poole, Environmental Manager, oversees the environmental aspects of the project and stresses the importance of collaboration between the client, crews, and stakeholders. "Working closely with the client and our skilled crews is vital to ensure that we efficiently restore the natural land capability and the ecological function of the disturbed project lands," he affirms. This partnership ensures that the land is restored to meet client requirements and environmental standards.

Reclamation efforts are meticulous, with crews restoring natural contours and drainage patterns, including reestablishing natural watercourse channels and banks disturbed during construction. The key to effective reclamation is proper topsoil handling, conservation and managing erosion risks by installing diversion berms and swales. Also important are spreading woody debris as rollback, installing erosion control blankets and seeding in key areas. Stabilizing the topsoil via these techniques ensures that the disturbed project footprint's natural land capability and ecological function can be restored following reclamation.

By paying attention to detail and employing environmental techniques, the land reclamation process minimizes the ecological footprint of pipeline construction. It also ensures wildlife, such as bears, wolves, lynx, caribou, and many birds will thrive, vegetation such as willows will flourish. These techniques and natural riparian processes will continue and the ROW will be seamlessly integrated into the natural landscape with only signage indicating the presence of the buried line.

Chris Bruins, Project Manager, emphasizes the importance of this work on pipeline projects: "Environmental protection is paramount in our industry. We strive to leave a positive impact by restoring the land we work on, respecting its natural beauty, and preserving its ecological balance. On our projects, this is not an afterthought; there is meticulous planning starting on day one to ensure we meet or exceed client requirements in the most efficient way possible."

We continue to demonstrate the balance between delivering a quality product and prioritizing environmental protection. Crews collaborate with the client, adhere to environmental techniques, and focus on safety to ensure the project's seamless execution with minimal environmental impact.





## Surerus Murphy Goes Above and Beyond in Environmental Protection and Project Delivery

Surerus Murphy is proud to continue its work on the Elko Project near Fernie, B.C., for the second of three seasons on the job. We are installing this pipeline on behalf of TC Energy, and construction is well underway with a workforce of over 500 people on site.

This year, our focus revolves around mainline construction, including 13 DFO-regulated creek crossings. As always, this work will be conducted with environmental monitoring, mitigation and safety at the forefront of the operations. We commenced mainline welding in early July, with mechanical completion scheduled for mid-October. Significant efforts were invested during the Spring 2022 season to gain access to the right-of-way, mobilize resources, and implement environmental mitigations to prepare for peak operations. This included preparing numerous water crossings to ensure the protection of delicate ecosystems.

One of the key milestones this summer was the pipe installation over the formidable Flathead Ridge. Spanning one kilometre with a nearly 35 degree grade, this steep slope poses unique challenges. To ensure the safety of our on-site teams, we deployed winch supports and established dedicated on-site rescue crews. Our crews opened access to this daunting slope earlier this spring.

Colin McKenna, Senior Project Manager, emphasizes the significance of Flathead Ridge, stating: "This section of the project is the driver for achieving mechanical completion including hydrotest in line with contract milestones. We are committed to meeting deadlines through meticulous planning and seamless collaboration among crews, subcontractors, and the client."

At Surerus Murphy, we firmly believe in giving back to the communities where we operate. Our Elko project team has actively supported local organizations this past offseason through sponsorships. We proudly supported the local Fernie Ghostriders hockey team and minor hockey program. In addition, we sponsored the fireworks display at the Fernie Griz Fest, a vibrant festival celebrating arts, culture, music, and entertainment.

In line with our dedication to community engagement, in spring, we pitched in for the Fernie Gravel Grind for the second consecutive year with funding and boots on the ground to volunteer (pictured).

This weekend-long gravel cycling experience, nestled amidst the Canadian Rockies, showcases some of Canada's best gravel riding opportunities. Our Elko project crew adjusted their activities on the gravel roads to ensure the safety of the riders.

As the Elko project progresses, we remain steadfast in our commitment to protecting the environment, adhering to regulations, and meeting our construction objectives. With a focus on sustainable practices and community involvement, we are dedicated to leaving a lasting positive legacy in the areas where we operate.







## Short-and-Sweet Lundbreck Project has all the Challenges of a Larger Project, Plus the Beauty of a National Park Landscape

Nestled near Lundbreck, Alberta, close to the Canadian/American border, in scenery so majestic that both countries have claimed nearby regions as national parks (Waterton National Park, Canada and Glacier National Park, USA), Surerus Murphy is working on a natural gas pipeline project for TC Energy's NGTL pipeline system.

The 7.3 km of 48-inch pipeline project began access construction and tree clearing works in February, wrapping up in late March prior to the spring thaw. Crews returned in June to start preparation works to complete the project prior to the end of 2023. Mainline construction began in the summer with peak construction in August. Hydrotesting is scheduled for September with final tie-ins and clean-up works scheduled for October. The rural, mountainous location of the project includes many technical difficulties due to its rugged location and the impact of wildlife that the project is working around. Construction includes rocks blasting, two major slopes and two trenchless crossings.

Surerus Murphy Project Manager Alex Jaber says: "This is a quick project. We'll be in-and-out within a year. It is also one of my favourite projects to work on as the scenery is spectacular. Although it is a short project in terms of length of pipeline to be installed, the construction includes all the challenges that a larger pipeline construction project would encounter—from blasting to steep slopes to acid rock containment. We also have a lot of birds nesting that we must work around."

We are working on additional NGTL projects with TC Energy in northern Alberta near Dawson Creek as well as near to Elko, south of Fernie.

Over the summer, as the number of crews increased on-site, the route was bustling with activity. And when construction is complete, the area will be returned to a natural state—fit for a national park—that it resembled prior to activity.





## Surerus Murphy Participates in the Blessing Ceremony at Lundbreck

Hosted by TC Energy and led by the Piikani Nation, Surerus Murphy's Lundbreck Section of TC Energy's NGTL West Path Delivery received an Elder's blessing to mark the ceremonial start of the project. The blessing also symbolizes the mutual commitment of all parties to foster a collaborative and beneficial relationship.

Elders offered blessings and prayers for the workers on site, the environment and the success of the Lundbreck project and emphasized the importance of understanding the value of their cultural heritage.

We build strong relationships with Indigenous communities, aligning with our core values of integrity, respect, and collaboration. Diverse perspectives and expertise are important to project sustainability.

Attending on behalf of Surerus Murphy was Todd Anderson, Vice-President of Business Development and Strategy and Sean Surerus, Chairman of Surerus Murphy Joint Venture, amongst other leaders from our organization. Thank you to everyone who was involved in making this special day happen.







## Trans Mountain Team Complete Coldwater Creek Crossing

When the floods hit the B.C. interior and coastal region in 2021, Surerus Murphy's priorities were the safety of the crews on the Trans Mountain Expansion Project (TMEP), Spread 5A project site and helping the immediate communities recover from the sudden events.

Torrential rains and water runoff altered many areas on the right-of-way, but few were as impactful to our project scope as the landscape change at the Coldwater Creek crossing. Initially a 60 m wetted channel, the crossing increased to over 300 m wide and was delayed by more than a year—a dramatic shift in scope and schedule.

When we resumed the open-cut crossing in 2023, it had to be completed simultaneously with Coldwater crossing 1, another significant open-cut crossing of the Coldwater River. Mike Scanlon, Senior Project Manager, talked about the expanded scope: "Sometimes Mother Nature throws a curveball that no amount of planning could have predicted. Accounting for the expanded wetted channel was a collaborative effort for us and the client, which required some effective engineering."

With over 300 m to cross, the team developed a lifting plan to place concrete-coated pipe weighing over 435 tonnes, roughly the weight of two Statue of Liberty, in a 384 m trench. Crews graded a 400 m long by 20 m wide section up to 5.5 m deep below the river bottom and well below the water table for scour protection requirements and to accommodate the weight of the concrete for the side booms.

In addition, an aquatics assessment discovered Salmon Redds (eggs) on the ditch line, requiring crews to shift their approach again to accommodate the eggs.

"Finding the eggs was another curve ball, but our environment crews are always prepared for this situation. Environmental crews spent nearly a month installing and monitoring mitigation, ensuring the Redds always had water flow and preserving their existence in the channel," said Mike.

From the time the floods hit through to the completion of the water crossings, Surerus Murphy's priorities were on display—protecting our people, the environment, and the community, while ensuring the delivery of the project on schedule despite the unexpected delays and changes.



## Leak Detection Crews Exemplify Integrity at TMEP

At Surerus Murphy's Trans Mountain Expansion Project (TMEP) Spread 5A project site, leak detection crews support integrity management and responsible operations. This crew installs the sensors that provide information to the operators that have the potential to inform controls of a potential leak before it happens.

The leak detection crews fasten high-density polyethylene (HDPE) conduit along a pipeline using pipeline tape and plastic locking clips. Handhole vaults are installed 1950 m apart or less and are used for testing the sensor system.

At Spread 5A, the HDPE conduit is attached to every inch of this pipeline. Inside the conduit are fibre optic cables with receptive sensors every centimetre.

The sensors provide information on acoustics, temperature and pressure that, when the line is operational, will alert the client's control room operators of a change in temperature or pressure—both pre-indications of a potential integrity breach to the pipeline itself.

Operators can dispatch an investigator to where the sensors indicate activity if needed. These sensors are another key tool to providing additional pipeline integrity and operational excellence.

Sensor installation is a critical aspect of the stewardship commitments we, as pipeline construction contractors and our clients as the operators, make to our joint stakeholders and Mother Nature as stewards of her land.

At TMEP Spread 5A project site, leak detection crews also use the conduit to house fibre optics that will provide rural communities with high-speed internet.

Chris Davidson leads the leak detection crew at the Spread 5A. He says, "We know our role adds a line of defence to the environment, and the team is passionate about that. We've installed the conduit and sensors efficiently, so the rest of the project build happens on time."





# TRANS MOUNTAIN PROJECT



## Pipeliners for Charity Winners

The Surerus Murphy team on the Trans Mountain Expansion Project (TMEP) held a fundraising raffle called 'Pipeliners for Charity' that raised \$100,000 for three local charitable organizations that focus on programming for youth in need: the Kamloops Therapeutic Riding Association, United Way of B.C., and the Chris Rose Therapy Centre for Autism. This was the largest fundraising raffle the Surerus Murphy team working on the TMEP has held, and it was done in partnership with the United Way of Northern B.C.

Three raffle winners were awarded three grand prizes: a Jeep Gladiator Rubicon, Ford Bronco, and \$25,000 cash to lucky winners from Spread 5A. Robert Wright won the grand prize Jeep Gladiator Rubicon and said: "This is a game changer for my family; we just had our third child, a daughter, three weeks ago, and we needed a new vehicle, so winning this is amazing for us."

Tim Ebl, who joined Surerus Murphy in January 2022, said he couldn't believe he had won and that this is a dream vehicle for his family while adding that he's also excited for the charities receiving the donations. Ken Shearer picked up the \$25,000 prize. Ken is a deserving winner and long-time Surerus Murphy foreman who joined the team at Spread 5A in July 2020.

Thank you to the 926 participants who purchased raffle tickets. Your contributions made this initiative successful.





## First Nations Veterans Memorial Monument

Two crew members from our company, who are Nlaka'pamux, were on hand during the unveiling at the First Nations Veterans Memorial monument in Merritt, B.C. The ceremony included a firepit donated by Surerus Murphy, which the two crew members helped to deliver.

The unveiling ceremony was a moving event featuring prayers, speeches, and a flyover by a Canadian Forces fighter jet. It was an opportunity for the community to honour the contributions of Indigenous veterans, recognizing the challenges they faced and the sacrifices they made.

We have a long-standing commitment to the Indigenous communities in the Nicola Valley region, and donating to the development of the monument helps further the established relationships with the local Indigenous communities.

The Nicola Valley First Nation Veterans Association expressed gratitude for the monument, emphasizing its importance in preserving the stories of these remarkable heroes. They plan to organize remembrance ceremonies at the site to ensure their legacy endures.

We are proud to have been part of this meaningful project and remain committed to supporting initiatives celebrating Indigenous communities' rich history and resilience.





## Safely Advancing the Saturn Project

Following de-winterization in the summer of this year, Surerus Murphy's Saturn project entered the next pipeline project phase which will include the mainline installation.

Located near Dawson Creek, B.C., we are installing 22.9 kilometres of 42-inch pipeline on behalf of TC Energy. In the initial stages of this spring and summer, crews focused on essential tasks such as de-winterizing the pipeline and implementing erosion and sediment control measures. We demonstrate an unwavering dedication to environmental mitigations and controls to ensure we meet the client's requirements and regulatory commitments.

Since mid-June, teams have been actively accessing, stripping, and grading the right-of-way. These preparatory activities ensure a smooth transition to mainline construction.

The trenchless crossing program, comprising 13 crossings, includes eight horizontal directional bores and five auger bores and has been underway since mid-June. At its peak, the Saturn project will involve approximately 400 skilled individuals during mainline construction. Effectively managing a complex array of activities across a large landscape is integral to the success of these crossings—something the experienced team at Sunrise exemplifies.

Safety remains the number one priority. With the active fire season in northern B.C., crews are vigilant and adhere strictly to provincial fire and smoke considerations. As part of our established safety protocols, when necessary, we implement mid-day fire watch for high fire-risk activities, ensuring the well-being of our team members and surrounding communities.

We are committed to the safe and assured delivery of the Saturn project. Our business-focused approach and relentless commitment to safety ensure the Saturn project remains on pace for a safe and successful delivery.





## Sunrise Cleanup, Soil Conservation, and Final Project Reclamation: *Restoring the Land*

This summer, the dedicated crews of the Sunrise project returned near the city of Dawson Creek, B.C. for the final cleanup and reclamation phase.

The Sunrise project, notable for the various pipeline features along the right-of-way, included 12 trenchless crossings, including auger bores, Horizontal Directional Bore, cradle bores, and an 1197 m Horizontal Directional Drill (HDD) under the Kiskatinaw River. Throughout the project, Surerus Murphy showcased its expertise in executing complex installations.

With 38 open-cut crossings, crews carefully traversed watercourses, wetlands, roads, and pipelines, demonstrating dedication and precision across the 23.5 kilometre pipeline and ensuring the highest standards for our client, TC Energy.

We recognize the importance of tailored soil conservation techniques to preserve the natural balance of all geographical areas and to the requirements of all stakeholders.

Crews diligently worked on decompaction efforts to optimize soil conditions for root growth and improve aeration and nutrient availability. At the forefront of our approach is returning the land as close as possible to before our activities began.

As we near the final completion of the Sunrise project, we celebrate the numerous achievements along the way. Milestones such as the Kiskatinaw River HDD and record-setting welding and coating repair rates ensured a successful In-Line Inspection (ILI), resulting in zero diggable indications. This further testifies to the expertise and dedication of our teams.

Our commitment extended beyond technical excellence. Throughout the Sunrise project, we supported local initiatives and positively impacting the region, donating nearly \$15,000 and volunteering for over 60 hours to support local initiatives, including at the Coldest Night of the Year event and the 18-Wheels of Christmas initiative. Our partnership with the community has been a cornerstone of our success, and we are proud of the lasting legacy we leave.

We are dedicated to sustainable development and social responsibility, and this project is a testament to our commitment to restoring the land to its former state. We understand that our projects contribute to infrastructure development and play a pivotal role in preserving the natural beauty of our surroundings.





## Infrastructure Team Delivers Quality and Safety

Surerus Murphy's first venture into the infrastructure sector establishes a strong precedent for safety and quality. Led by experienced professionals in the facilities infrastructure field, the project team is setting solid benchmarks for weld repair rates, with zero recordable injuries in 2023.

Despite the intricacies of the project, including elevation changes, bends, and varying temperatures, the team maintains a meticulous focus on adhering to strict 25 mm tolerance ratios and specifications. Having completed over 3,440 welds on the project with a repair rate of 3.4%, the team constantly strives for improvement, reflecting their commitment to excellence.

Whether installing overground or underground pipelines, safety is embedded in our culture. Safety is discussed daily at tailgate meetings, and the culture is demonstrated throughout the right-of-way. In April, the management team actioned a mock emergency drill simulating a pressure test failure during hydrotesting. Approximately 120 workers participated, enhancing emergency response protocols and emphasizing workforce safety.




## Industry-Leading Welders at Surerus Murphy

Welding is integral to every project at Surerus Murphy, and we produce exceptional results.

Early this year at the Sunrise Project, crews set a mechanized welding record on the mainline with a welding repair rate of 0.66%, the lowest in Surerus Murphy's history. Soon after, the same welding crew moved over to Bear Canyon and broke their record with a mainline weld repair rate of 0.28%.

In addition, at the Trans Mountain Expansion Project (TMEP) spread 5A, we collected the 2022 Q4 and 2023 Q1 Contractor Award for Quality at TMEP by consistently exceeding quality benchmarks on substantial number of welds.



These accomplishments sit alongside a commitment to safe operations, with the Sunrise and Bear Canyon Projects maintaining zero recordable injuries throughout the pipeline's installation. At the same time, the team at TMEP received two 2022 contractor awards in the Environment, Health & Safety categories.

"Welding crews on our projects leverage the latest equipment and always stick with reputable service and equipment providers, keeping them positioned to safely and efficiently execute the welds," said Kyle Scott, Project Manager, Sunrise & Saturn Projects, who went on to credit the personal power of the team, "this group is driven, determined, and highly-experienced; they can deal with challenging conditions, extreme weather and tight timelines."



## Industry-Leading Engineering

### Revolutionizing Project Management by fully integrating Unmanned Aerial Vehicle (UAV) Data into our Geographic Information System (GIS).

Surerus Murphy has made a landmark achievement revolutionizing how we document and present our projects. Our GIS and Engineering teams have successfully integrated regular UAV/remote sensing data with our real-time web-based GIS. The ongoing approach is integrated into operations at multiple projects.

Over the past decade, we have experienced the limitations that come with the complexity and sheer file size of UAV data we collect. This often resulted in the information being confined to small subsets of our Engineering teams, who possessed the requisite skills, software, and hardware to handle and analyze these vast datasets. Though these traditional methods did serve their purpose, they restricted the accessibility and utilization of UAV data by various stakeholders and team members across our projects.

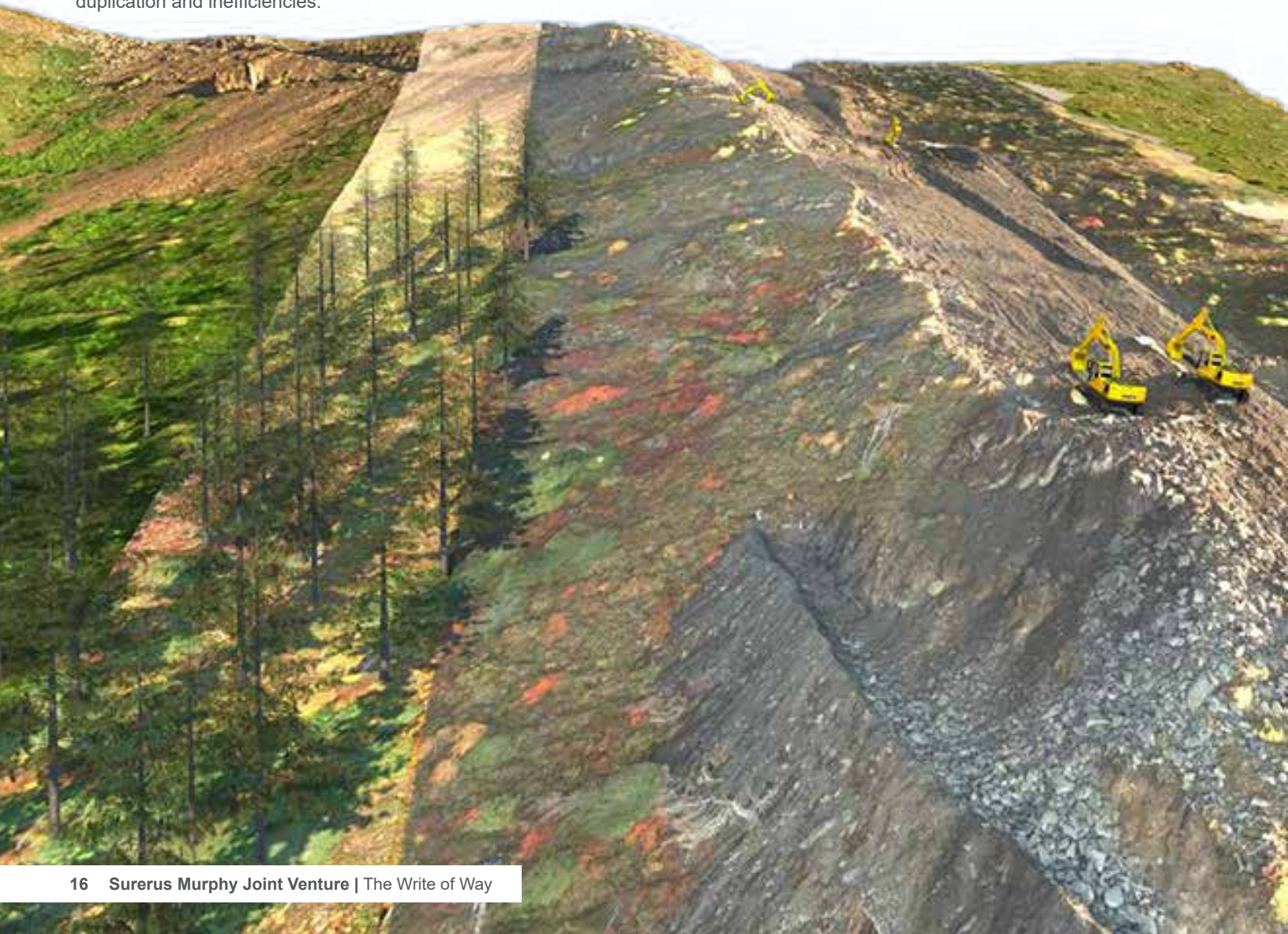
Cloud-based UAV data platforms have emerged in recent years, enhancing data sharing and visualization. However, these platforms have lacked sophisticated analysis tools and true integration with a comprehensive Geographic Information System. This often led to data duplication and inefficiencies.

“This solution is something we have worked towards for a few years because we know that smart data drives successful projects,” said Jeff Zack, Engineering Technology Manager. “Anytime we can increase efficiencies and effectively share data between projects, we know this adds value to our engineering services.”

Our solution has brought UAV data to a true spatial data science platform. We can now share and analyze large datasets more efficiently and comprehensively and view all project data from a single platform. It allows us to integrate advanced spatial analysis and deep learning tools with our Engineering Design & CAD data.

As a result, teams are better equipped than ever before to make highly informed, data-driven decisions without needing to be data management experts. We are now set up to monitor conditions on site and view all project data completely and cohesively.

Our GIS team is dedicated to continuously developing these integrations, fostering a culture of geospatial intelligence within our organization. We believe this will greatly enhance the way we support our clients.





## Engineering Excellence Backed by Permits and Expertise

Surerus Murphy prides itself on its commitment to engineering excellence. With a team of innovative experts and cutting-edge technology, we have established a strong reputation for delivering complex pipeline and infrastructure projects. Central to this success is our Engineering Department which is permitted to practice by the Association of Professional Engineers and Geoscientists of Alberta (APEGA) and Engineers and Geoscientists of British Columbia (EGBC), allowing us to practice engineering in Alberta and British Columbia.

Our engineers are at the forefront of their fields and are embedded in all projects. They utilize advanced GIS technology, LiDAR, and Photogrammetry to plan and execute pipeline and infrastructure construction programs meticulously. From navigating steep slopes to traversing major highways and waterways. Their expertise extends to diverse terrains and challenging environments. Equipped with state-of-the-art aerial and GPS technologies. We consistently demonstrated an exceptional ability to make complex installations appear effortless.

Our licenses, also known as Permits to Practice, are granted by APEGA and EGBC under the authority of acts in Alberta and British Columbia, respectively. To obtain these licenses, Surerus Murphy and our engineers must meet the stringent requirements set by the jurisdictional authorities. The focus lies on upholding the duty to protect the public, showcasing technical and regulatory competency, and adhering to ethical guidelines.

Joe Gay, Engineering Manager at Surerus Murphy, says: "Permits to practice engineering are vital in our industry. They are a clear demonstration of our commitment to public safety, technical proficiency, and ethical practices. These permits ensure that our projects are executed with the highest standards, guaranteeing the protection of the public and the environment."

Prioritizing engineering and technical services differentiates Surerus Murphy from its competitors and offers exceptional value to clients. These permits are a strategic advantage and ensure compliance with APEGA and EGBC.

As a registered firm, we strictly conduct business following the principles and regulations outlined by APEGA and EGBC. Our Professional Practice Management Plan further demonstrates a sound dedication to executing engineering services while complying with industry regulations.

By upholding an unwavering commitment to engineering excellence and attaining permits from APEGA and EGBC, we demonstrate a commitment to public safety, technical proficiency, and ethical conduct. As a result, we are poised to continue leading the industry in innovative pipeline and infrastructure development.





# SAFETY SPOTLIGHT



## Surerus Murphy Safety Champions

At our Sunrise and Saturn projects, we recognize staff who go above and beyond for safety with a safety belt. Inspired by the traditions of wrestling, boxing and UFC, the safety belt is a fun way to inspire safe actions and recognize those who go above and beyond.

So far, the team has presented the belt to over a dozen people at regular project safety meetings and in the field. Recipients have received the belt for mentoring new staff in the Surerus Murphy Green Hand Program, identifying potential hazards and creating solutions for potential risks. The Sunrise and Saturn projects have zero recordable injuries to date, and we believe positive safety recognition efforts such as this are a key part of creating this safety culture.

***Congratulations to our safety champions, and we look forward to recognizing more winners.***





# ENVIRONMENTAL SPOTLIGHT

## Nesting Migratory Birds

Robins (*Turdus migratorius*) are from the thrush family, and their arrival indicates spring has arrived. Robins can be found anywhere in North America but are migratory and generally spend only summers in Canada and migrate south for the winter. Robins are one of the first of many migratory birds that make their way north for the summer seeking a suitable place to find food, build a nest, and lay eggs.

When working within robin's nesting grounds during critical stages in the bird's migratory pattern, we must not disturb breeding birds or damage active nests (i.e. with eggs). By understanding the nesting patterns of robins and adhering to regulations enacted to protect the birds, we can reduce our impact and anticipate potential conflicts.

Environment and Climate Change Canada (ECCC) has published nesting periods, including zone maps and calendars, for all of Canada, that provide a range of dates for regions across the country when experts expect most migratory birds to be nesting.

The federal Migratory Birds Convention Act (MBCA) and the Migratory Birds Regulation (MBR) prohibit the disturbance or destruction of migratory birds and their nests and eggs. The MBCA and MBR apply to all lands and waters in Canada, regardless of ownership. The ECCC is responsible for administering the MBCA on behalf of the federal government and ensuring people follow the regulations.

The MBCA includes only migratory birds. Birds not covered by the MBCA include grouse, quail, pheasants, ptarmigan, hawks, owls, eagles, falcons, cormorants, pelicans, crows, jays, kingfishers, and some species of the blackbird. Although not covered by the MBCA, provincial protection may apply to these birds.

We protect the nests and birds in alignment with the migratory bird regulatory acts and all provincial regulations. Qualified Environmental Professionals (QEP) may survey our work areas, locate active nests, and inform relevant parties of nesting locations. If experts identify a nest, they will determine the setback, a safety zone for the nest that work crews cannot infringe upon. Monitoring the location is ongoing, and once the eggs have hatched, the young have fledged, and the nest is empty, QEPs can remove the setback, and work in the area can continue.

As a result, to maintain an accurate schedule, Surerus Murphy's Environmental team works closely with Project Planning teams to anticipate and develop contingencies if a setback impedes work. Planning for the environment protects the environment, and Surerus Murphy is committed to ensuring the appropriate balance between project progress and environmental protection.





# COMMUNITY SPOTLIGHT

## Enbridge Tour Alberta for Cancer

Surerus Murphy provided riders, a rest-stop and fundraising dollars for The Enbridge Tour Alberta for Cancer—an annual bike riding event where participants raised money for cancer research.

Dedicated Surerus Murphy riders took on the arduous and rewarding ride and raised over \$27,000 collectively for the initiative, contributing to over \$5 million raised in total for the 2023 event.

At our sponsored pit stop, over 20 volunteers created an electric and entertaining atmosphere while providing much-needed sustenance and cheer to all the riders. With nutritious snacks, well-equipped bike racks, an enthusiastic DJ and a fun-loving dance crew, our pit stop became popular for participants on their challenging trek.

This event showed the power of coming together for a meaningful cause, and we are proud to participate in this community, an event where every pedal made a difference in the fight against cancer.





# COMMUNITY SPOTLIGHT





## Surerus Murphy Snowboarder Austen Brown

Surerus Murphy-sponsored snowboarder Austen Brown finished an exceptional season competing for qualification on the Freeride World Tour. Competing against some of the best snowboarders in the world, Austen was a force on the slopes.

At the Red Mountain IFSA Qualifier in Rossland, BC, Austen landed in 3rd place, the highest he's ever placed at this event. He continued to impress at the Kicking Horse IFSA Qualifier, and his performance at the Crystal Mountain IFSA Qualifier in Washington State earned him a 4th-place finish in both the events that featured many of the world's best big mountain snowboarders.

Austen is a self-taught snowboarder who grew up riding smaller hills and terrain parks near Ottawa before moving west to Fernie, B.C. He discovered big mountain riding there and was inspired to compete at a higher-level. Austen's success is a testament to his hard work, perseverance, and natural talent.

In 2022, a chance encounter with some of our employees altered his career. By chance, he met Surerus Murphy workers from the Elko pipeline project, headquartered near Fernie, B.C. Austen connected with President, Mick Fitzpatrick, and Chairman, Sean Surerus, and a sponsorship partnership was formed.

Mick and Sean saw the determined efforts of a person chasing

his dreams and lent Austen a truck to safely travel to and from events in tough driving conditions. With our support, Austen could focus on his competitions without worrying about the logistical challenges of getting there. Austen noted that the reassurance and kind words from Mick and Sean were invaluable, as they took the pressure off him and encouraged him to keep following his dreams regardless of the outcome.

According to Austen: "It made a huge difference to have the Surerus Murphy support enabling me to focus on what I needed to do to compete at my best. The truck was a game-changer, and the support from Mick and Sean was incredible. They understood what it takes to succeed and were always there for me when I needed them."

Currently, Austen is training in Wanaka, New Zealand, and is looking to keep his momentum going on the Freeride World Tour. Mick Fitzpatrick, President of Surerus Murphy, admired Austen's success, stating: "We are proud of Austen and his achievements. We share similar values, such as working hard, striving for excellence, and always operating with integrity and safety. His commitment to excellence and natural talent is remarkable, and we are honoured to have supported him on this journey. We look forward to seeing what he accomplishes in the future."

**"It made a huge difference to have the Surerus Murphy support enabling me to focus on what I needed to do: compete at my best. The truck was a game-changer, and the support from Mick and Sean was incredible. They understood what it takes to succeed and were always there for me when I needed them."**







Surerus Murphy is sponsoring Quest Theatre, a non-profit organization based in Calgary specializing in bringing theatre to youth across Alberta. Beginning this year, the three-year sponsorship will help keep Quest Theatre's most important piece of equipment moving, the Quest Theatre tour van. Keeping the van on the road keeps the show moving as they traverse the province to reach schools and rural communities across Alberta.

Supporting Quest Theatre is an easy decision for us as its innovative approach and passionate commitment to quality theatre align with Surerus Murphy's approach to pipelining. In addition, the touring program reaches many underrepresented communities in Alberta, aligning with the Never Harm core value exemplified at all Surerus Murphy project locations.

We are committed to supporting the communities in which we live and work and is excited to help keep the Quest Theatre tour van rolling around Alberta.





# INDIGENOUS SPOTLIGHT



## National Indigenous Peoples Day Tree Planting

In honour of National Indigenous Peoples Day, Surerus Murphy collaborated with the Tsuu T'ina Nation in Alberta to plant 270 trees. The event represented a meaningful way to honour Indigenous heritage, promote environmental stewardship and connect with local Indigenous people. The day began with introductions and a blessing from a Tsuu T'ina Elder, followed by instructions on proper tree planting techniques provided by Crystal Consulting Inc. (CCI), who attended the event with us and offered their valuable guidance.

The event symbolizes our commitment to sustainability and unity, allowing us to connect with the Tsuu T'ina community, learn from their deep connection to the land, and celebrate their rich heritage. This experience strengthened our understanding of Indigenous traditions and sustainable practices. The new trees will also support the area's ecology, a habitat for many wildlife species.

Despite a rainy day, our Surerus Murphy social committee, known as the CREW (Community, Respect, Engagement, Wellness), along with 17 participants, including volunteers from the company, attended the event and accomplished the tree planting task.



# INSPIRING PEOPLE, BUILDING CULTURE

## Kim Brown

### Going Above and Beyond as a Project Controller at Surerus Murphy Joint Venture

Surerus Murphy is fortunate to have a dedicated and exceptional team member in Kim Brown, who serves as a Project Controls Lead on the Coastal GasLink (CGL) project. As soon as Surerus Murphy began construction in February 2019, Kim quickly stood out as an integral team member, becoming known as the go-to person providing support across all the project groups. Her expertise in project control and unwavering commitment makes her an invaluable asset, and she has left an indelible mark on the success of the project and the company.

Although project controls is crucial on any pipeline project, it can be argued to be considerably more so when considering the magnitude of a legacy project such as the CGL when considering the challenges and complexities of the schedule and budget.

Kim's dedication and passion for her work shine in everything she does. While her primary responsibility lies in project control, she consistently takes on additional tasks, going beyond her role to ensure supporting others on the project team. Kim's willingness to face any challenge head-on has earned her the reputation of being a reliable team member.

Longtime CGL colleague David Hermanson says: "Kimberly is a person with the remarkable ability to remain calm throughout the high pressure and fast pace of the day-to-day, and somehow, in a split second, if the moment calls for it, pause everything to make sure someone is ok, or ask if they need help, or just make time for a talk when someone needs it. I am grateful, as are many, to call her my friend."

By the time Kim has walked into the office in the morning, she has already found solace in a gym, which she has found is the secret tool to ensure she remains mentally and physically fit. Leading by example, she is a true model of balance between her focus on living a healthy lifestyle in the morning and choosing to give work her all during the rest of the day.

Her interests span a wide range of hobbies, reflecting her versatile nature. Whether hiking through picturesque trails of the Okanagan, boating on the majestic waters of Kal Lake, or packing up the trailer to discover a new camp spot, Kim believes that spending time outdoors rejuvenates the soul.

When asked about her thoughts on what it is to be a pipeliner, Kim shares: "Pipelining isn't just about the job, it's the people that makeup what it is to be part of the pipeline community. One thing I hold near and dear to my heart is family. My family lives all over Ontario, Scotland, and Alberta. Here on the pipeline, you find family within your team because, like me, many of us are far from home."

Kim's dedication and strength in the Project Controls discipline, combined with her willingness to go above and beyond for her team, make her an invaluable asset to the project and those around her. Surerus Murphy Joint Venture is proud to have Kim as part of its team at CGL and looks forward to her contributions and leadership in the pipeline community for many years to come.



**"Pipelining isn't just about the job, it's the people that makeup what it is to be part of the pipeline community. One thing I hold near and dear to my heart is family. My family lives all over Ontario, Scotland, and Alberta. Here on the Pipeline, you find family within your team because, like me, many of us are far from home."**



## Emmanuel Odiase Balances Professional and Personal Life



"I've been around a while and like getting to know people at sites, so seeing friendly faces from the last 20 years at many projects is not unusual. It is lively and exciting to meet people of all backgrounds and keep seeing them throughout your career. For me, it's like a family."

Since joining Surerus Murphy in June of 2022, Emmanuel Odiase's strong work ethic, depth of knowledge in construction, thoughtful and detailed approach has supplanted him as a critical piece of the infrastructure group. In addition, the path in his personal and professional life demonstrates a balanced perspective with a focus on values and wellness.

Emmanuel brings over 30 years of combined experience from his home country of Nigeria and his adopted land of Canada. With a well-rounded background in the energy industry, he has specialized in many project control roles with escalating responsibilities.

He has a civil engineering background and attributes his success to his deep knowledge of construction activities and his ability to develop different reporting metrics for various projects—resulting in both revenue & time saving for project purposes and providing supports to the estimating team.

Explaining his edge, Emmanuel shares his approach. "It's not sufficient to merely track any deviations from the initial baseline, instead, looking for the right indicators and spot deviations early on the project, find and analyze the possible solutions and support project team in decision-making, while providing information needed to make the right decisions."

Emmanuel is calm, confident, and easy to approach. In addition, he has exceptional work-life balance, which is essential to him and key to his work.

"This work can be stressful, and you need to find a balance to manage that stress effectively. I find solace in my spare time; I walk to refresh and clear my mind. Knowledge keeps me stimulated, and I read a lot. One of the most important things to me is connecting with the community, which is why I also take on leadership roles with my church."

Emmanuel reflects on the close-knit feel of his team. "I've been around a while and like getting to know people at sites, so seeing friendly faces from the last 20 years at many projects is not unusual. It is lively and exciting to meet people of all backgrounds and keep seeing them throughout your career. For me, it's like a family."

Emmanuel has found his balance with Surerus Murphy, and it shows. "It's a nice feeling when the projects work out, the controls are in place, the Project Manager and the client are happy; I like being happy too."





## Empowering Leaders to Win Today and Tomorrow: a Recap of the Surerus Murphy Spring Conference

At this year's Spring Conference in early May, the Surerus Murphy Senior Leadership team was introduced to two days of military planning, execution and debriefing strategy through action-packed exercises designed to improve team performance. Global consulting firm Afterburner brought in former military fighter pilots who shared their simple, scalable and holistic execution methodology for precise and accountable action.

Instrumental in wanting to bring a new approach to this year's conference, Mick Fitzpatrick, President of Surerus Murphy, commented: "I believe that growth and progress are rooted in stepping outside a person's comfort zone. Afterburner challenged our leaders to think differently in a safe and dynamic environment that was applicable to but different from their day-to-day roles. The fresh perspectives and techniques that were discussed and learned can be applied within our organization, and that makes the learnings gained important to our organizational growth." Mick explained. "Continuous improvement is at the core of everything we do, and finding innovative ways to challenge our leaders fosters this culture."

"We had no idea this was on the conference agenda until the pilots burst into the room and began putting us through their workshop. The experience was impactful, and the learning from their combat experience will be memorable," said Mitch Starke, Head of HSE.

Insights gained from this year's conference will have a lasting impact on our organization's success. "We are filled with confidence as we look toward the future," adds Mick. "The new insights backed by our team's unwavering dedication to excellent performance is what we need to seize future opportunities."

Thanks to Afterburner for empowering our leaders and to our senior leadership team for embracing this new approach to the conference. The path to a brighter future begins with winning today.





## Empowering Tomorrow's Pipeline Construction Visionaries

The Building Leaders Program has successfully nurtured a new group of 30 outstanding individuals who have emerged as leaders at Surerus Murphy. This initiative, led by 'Results.,' reflects our strong commitment to cultivating leadership from within.

The program focuses on enhancing leadership competencies, fostering alignment, promoting engagement, and improving communication. Participants engage in eight half-day sessions delivered over eight months, starting in September, where they gain valuable knowledge and practical skills.

By establishing an internal pipeline of leaders across all levels and business units, we ensure a promising future and effective succession planning. The program's focus on alignment, engagement, and communication has strengthened our organizational fabric, fostering a culture of discipline with an entrepreneurial spirit and a sense of accountability for results.

We applaud the graduates of the Building Leaders Program and eagerly anticipate their continued growth and contributions to our pipeline construction company's journey toward excellence. This initiative underscores our unwavering commitment to building leaders who will shape the future of energy infrastructure and positively impact the communities we serve.



# WHAT'S NEW AT Surerus MURPHY

## “The Pipeline” provides new-to-the-industry workers a path for career progression



Surerus Murphy has formally launched “The Pipeline”, an employment stream process providing interested entrants in the infrastructure construction industry with paths indicating how to access roles in our organization for students and mature applicants pivoting careers.

Currently, three organizational programs are key to “The Pipeline”—our evolving leadership role with SAIT’s Construction certificate program, our Green Hand on-site mentorship program for workers new to our processes, and the newly launched student internship program.

Last year, we formalized our relationship with SAIT’s School of Construction. We now have a project manager advising on the department’s curriculum and an internship program in place, offering term-limited entry-level roles in project management for students to shadow leaders and learn the intricacies of cost and scheduling, workforce planning, procurement, and construction processes.

Also new is an internship program offered to post-secondary students of employees. The employee/student internship program places students in roles applicable to their line of study for real-life job experience prior to graduation. This year, we had students working in finance, procurement, communications and as a field laborer.

Through partnerships and internships, “The Pipeline” formalizes a path for career professions in construction to enter in a field or office role, utilizing construction or professional qualifications to advance. Interested applicants can access roles as students or interns and grow their career through stages of development and a systematic approach to gaining experience to driving capabilities and confidence in a complex industry.

Additionally, our Green Hand program places new trades workers with experienced trades professionals as their mentor. The mentors coach the new worker on aspects of construction that are beyond what is learned in the classroom. With a focus on safety and capacity building, the Green Hands gain experience and confidence through real-life construction applications, learning the Surerus Murphy standards. Over time, as skills are learned and safely applied, the Green Hand graduates from the program and transitions from a green hard hat to a yellow hard hat, signalling a learned level of competency in the role.



“It was important to show those embarking on or pivoting to a career in infrastructure construction that we have a process that allows for on-the-job training and growth,” says Michelle Dulmage, Vice President of HR. “Workers don’t have to go away to grow and gain varied and diverse experiences. We recognize that we needed to build opportunities for development and advancement, and we have done that with The Pipeline.”

For more information on “The Pipeline”, visit the career page on the website.



## Surerus Murphy Summer Student Program Spotlight

For those entering the job market, the first step to starting a career is getting a foot in the door with an organization that offers meaningful experience. Surerus Murphy's summer internship program is one of the benefits the organization has recently established to enable new or soon-to-be graduates with relevant career experience that can help them land a professional role after their studies complete. Surerus Murphy also benefits from the enthusiasm and fresh perspective the interns are providing.

This summer, Cameron Birkby, a second-year engineering student at the University of British Columbia, joined the Surerus Murphy Engineering and Geographic Information Systems (GIS) teams. His role included geographical data analysis, the creation of project maps and pioneering tutorial videos as learning resources.

Reflecting on his experience, Cameron shared: "The exposure and opportunities I received here surpassed my expectations. I am grateful for the chance to work on engaging and dynamic projects that will undoubtedly benefit my future career."





# WELLNESS SPOTLIGHT



## Innovative Approach To Wellness

Surerus Murphy brings counselling services to the doorstep of staff at site. Staff working long hours and many kilometres from home have unique challenges when accessing counselling services.

To make counselling services available, we developed on-site counselling. This is an innovative approach to provide counselling and support services on-site to staff on Trans Mountain Expansion Project Spread 5A. Repurposing an out-of-use seacan in the Kamloops yard and an unused meeting room in the Merritt yard allows space for one-on-one counselling support for staff dealing with everyday issues that are extra tough to tackle while far from home.

An on-site counsellor is available for confidential and personalized support, whether it's mental health concerns, substance use issues, family or relationship matters, job-related stress, finances, legal inquiries, or medical responsibilities.

In the Kamloops and Merritt laydown yards, staff can book an appointment or simply walk in during designated drop-in times. Mental health and wellness is a pillar of our core values in our never harm approach to protecting our people, environment, and the communities in which we work. Surerus Murphy is committed to providing the necessary resources for staff to thrive personally and professionally.

### Walk-ins Welcome.



#### MERRITT

Tuesdays - 4:00 pm to 7:00 pm  
Merritt External Meeting Room



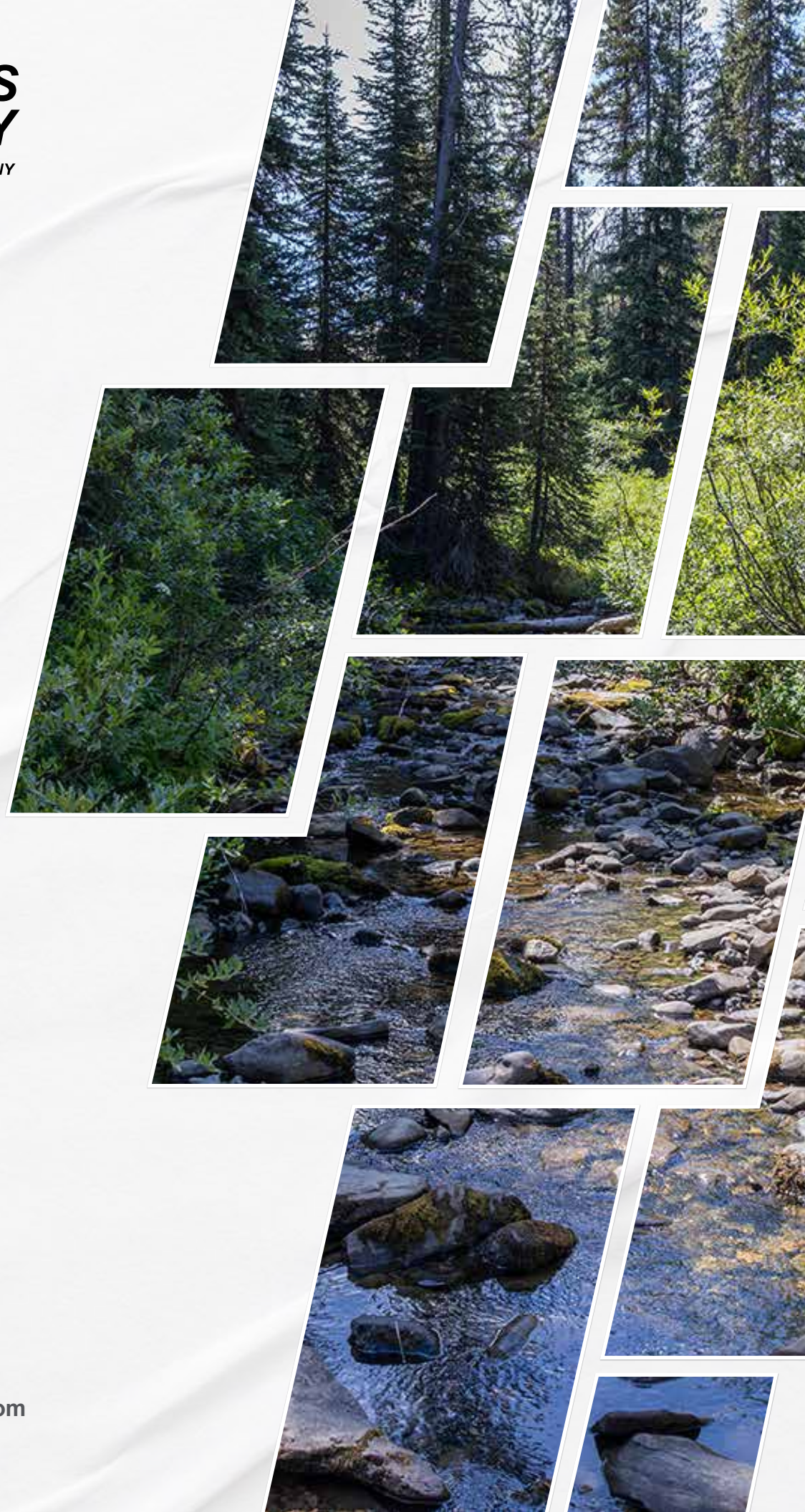
#### KAMLOOPS

Wednesdays - 5:00 pm to 8:00 pm  
Thursdays - 5:00 pm to 7:00 pm  
Kamloops External Meeting Room 2

*There are many other special and unique benefits for staff at Surerus Murphy, including:*

- Employee benefits programs
- Employee Family Assistance Provider (EFAP)
- Headversity
- On-site counselling (TMEP Only)
- Unique volunteer and social opportunities
- Financial education
- Engaging guest speakers
- Physical wellbeing incentives





2200, 605 - 5th Avenue SW  
Calgary, AB T2P 3H5  
T: 403.930.1358  
E: [info@surerus-murphy.com](mailto:info@surerus-murphy.com)  
[www.surerus-murphy.com](http://www.surerus-murphy.com)