

# Machinery & Tools Consignment

# A U C T I O N

## Saturday, September 15 @ 9:00 AM

1668 Jordan West Road, Hwy. 9, Decorah, Iowa  
(One Mile East of Decorah Airport Along Hwy. 9)



### Machinery / Equipment

1660 Case IH Combine; 863 Corn Head; (2) Bean Platforms (one for parts); Grain Cart; 4640 John Deere (has dual hubs); 4640 John Deere w/Auxiliary Fuel Tank; Corn Dryer Batch (PTO Unload); Corn Picker; AC Sickle Mower; Corn Dryer; New Holland BR7090 Net Wrap Round Baler (1500 Bales); (4) Gravity Boxes; 560 Farmall (NF-Gas); Two Row Chopper w/ Cornhead & Hayhead; Two Silage Wagons; Four Row Stalk Chopper; Volvo End loader; IH Graintruck; 756 International Tractor; Stack On Tool Box; Red Tool Box; Corn Head Row Snout; L25B End loader (Kabota Motor) (Forks & Bucket); IH 2 Point to 3 Point Attachment; IH Cast Rim Center; Oliver 4 Bottom Plow; 400 Bushel Kinze Grain Cart; Rake; New Holland Silage Blower Elevator Dump; Gehl Silage Wagon; Vintage Steel Wheel Road Grader; AC Disc; Water Wagon on Running Gear (Has Pump); 5 Section Drag w/JD hoist; Hutchison 10x71 PTO Drive Auger; Several Hydraulic Cylinders; (2) Quick Hitch for Skidloader; Numerous Implement Tires; Four Door Hog Feeder; J&M Gravity Box Only; JD Pickup Head for Combine or Silage Chopper; Massey Ferguson 3point Blade; Flare Box; Bin Sweep Auger; Wagon Hoist; Pair MF Wheel Weights; Oliver Fenders; Krauss Heavy 10' Disc; (2) MF Hydraulic Cylinders; Vintage JD Dump Rake; 3 Point PTO Drive Garden Tiller.

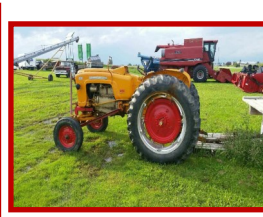


### Car / Tractor / Truck / RV

1995 Chevy Silverado w/Topper (72K Miles, NO Rust); 1964 Buick LeSabre, Restored (70K Original Miles); 1997 Holiday Rambler RV (Gas 460 w/Overdrive); 1957 Minneapolis Moline.

### Tools / Outdoor / Shop

Large Miter Saw; 3 Point Rock Bucket; Tree Wrapper; Garden Tractor Snow Blower; Snow Shoes; (2) Tractor Seat Stools; Pair of New Tractor Tire Chains; (2) Pairs Truck Chains; Craftsman Wood Chipper; Air Compressor; 110 Gallon Barrel; 25' Roll of 4" Tile; Craftsman Planer; Craftsman Bandsaw; Table Router/Joiner; Patio Table w/Umbrella & Four Chairs; Rubbermaid Storage Box; Transfer Pump; Steer Stuffer; Bunk Feeder; Wishing Well; Red Generator; P&H Welder; Tree Stand; Coleman 10HP Generator; Wood Lathes; Squirrel Cage Fan/Motor; Torch Kit w/ Tanks & Dolly; Glass Door; (3) Windows; 6' Heavy Plastic Picnic Table; 250 Gallon Water Tote; Lawn Roller/Compactor; Lawn Sweeper; Lawn Cart; Swimming Pool Ladder; 30 Norway Spruce; 10 Black Hills; 10 Arborvitae; Misc Lumber.



### DAN MEASE Construction

**Equipment:** 4625 Gehl Skid Loader; Skid Loader Boom Attachment; John Deere General Purpose Vintage Tractor (complete restore); 1962 One Ton Dually w/Flatbed & Hoist; 2001 Bigo Skid Loader Trailer; 1999 Chevy Ext Cab 1/2 Ton Pickup; Haulmark Enclosed Tandem Axle Trailer.

**Shop/Tools:** Portable Air Compressor; 20" Pioneer Chainsaw; 14" Echo Chainsaw; Milkhouse Heater; Several Pneumatic Air Nailers; Makita Sliding Compound Miter Saw; DeWalt 10" Table Saw; DeWalt Circular Saw; Jamerco Air Screw Gun; Halogen Shop Light; Treble Light; Makita 18V Cordless Driver Set; Kett Power Cutting Shears; Paslode Cordless Framing Nailer; Porter-Cable Jointer; Transit w/Auto Laser System; Black n Decker 1/2" Hammer Drill; Bosch Router; Makita 18V Cordless Drill Set; Makita Palm Sander; Bosch Hammer Drill; Scroll Saw on Stand; 10' Aluminum Break/Bender; Portable Stand; DeWalt Circular Saw; Hitachi Air Nailer; Makita Electric Reciprocating Saw; Porter-Cable Belt Sander; Skil Saw; Ryobi Tile Cutter; Makita Electric Planer; Porter-Cable Reciprocating Saw; Milwaukee Right Angle Drill; Texturing Machine/Sprayer; 2600 PSI Gas Power Washer; New 100' Extension Cord; Gas Powered Concrete Saw; 10 Ton Come-a-Long; Remington Electric Chainsaw; Angle Grinder; Air Hose on Reel; Assorted Screws, Bolts, Nails, Wrenches, Punches; Drill Bits; Drywall Tools, Fasteners; Woodworking Tools; AWLS Chisels; Hole Saws; 3/4" Socket Set; Jig Saw; Caulk Guns & Sealers; Pipe Wrenches; Hammers; Screw Drivers; Pliers; Misc Hand Tools; Handyman Jack; Several Pipe Clamps; 7' and 4' Levels; Organizers; Hinges; Hardware; Copper Fittings. Outdoor Wood Burner; Small Cast Iron Wood Stove.

Cedar Valley Iowa Realty & Auction Company

Decorah Office: (563) 382-2273

One Stop Shop For Auction & Real Estate Services

Lunch Stand on Site

**Terms & Conditions:** Announcements the day of the auction take precedence over any printed material. All settlements made day of auction.

All items sold "AS IS." Not responsible for accidents. All purchases must be picked up within 5 days after sale. \$5/Per day charge added for everyday not picked up after the 5 days.

Cash, credit/debit card or good check on day of sale!

[www.AuctionsGo.com](http://www.AuctionsGo.com) [www.AuctionZip.com](http://www.AuctionZip.com)

Visit Our Website

[CedarValleyAuctions.com](http://CedarValleyAuctions.com)

Cedar Valley Iowa Realty & Auction Company

Owner/Auctioneer: Jerry Hegtvedt Cell: (641) 330-1885

Contact Us to Consign!

Follow Us on Facebook

@CedarValleyIowaRealtyandAuction

