

LAMBETH COUNCIL APPROVE DENBY TOWERS SCHEME AND CONDEMN LOCAL HOMES AND THE GREEN TO DARKNESS

The four Lambeth Labour members of planning committee vote to approve the Denby Towers scheme without even visiting site.

Only five councillors were at meeting with surprising late withdrawal from the only local Labour councillor. The meeting was closed down after only about 15 minutes discussion despite an objection from the Green councillor who wanted time for proper scrutiny of the scheme.

THIS TERRIBLE SCHEME CAN STILL BE STOPPED!

- >The Mayor has to review the scheme - ask him to **call in** the scheme now
- >The Secretary of State can **call in** the scheme now - lobby MP and SoS
- >A new Council after **elections** can review scheme
- vote** for candidates against Towers & for Sustainable Alternative

Savelambethwalk (SLW) have developed a viable sustainable alternative scheme that delivers the same number of homes but avoids the blight on local homes & saves the park from overshadowing. It also avoids obliterating the heritage view of Parliament from the Green. AND it addresses the Climate Emergency by avoiding huge amounts of CO2 from using retrofit and sustainable materials



OPTION APPRAISAL TEST	HfL scheme	Alternative
Scheme to provide 141 new homes, including 45 social homes	YES	YES
Financially viable using same financing principles	YES	YES
Below London Plan tall building threshold of 30m	NO	YES
Meets BRE residential daylight standards: all resident retain light	NO	YES
Optimises Lambeth Climate Emergency policies	NO	YES
Avoids overlooking/shadowing existing homes, gardens & Green	NO	YES
Retains ability of families to enjoy sun on the Green in evening	NO	YES
Minimises mental and physical health impacts (daylight and recreation loss)	NO	YES
Consistent with Local Conservation Area/townscape	NO	YES
Can be delivered in less than HfL 3 year plan	?	YES
Community engagement	NO	YES
Retains mature trees	NO	YES
TOTAL (YES=1, NO=0)	2	12

Join the campaign



email: contact@savelambethwalk.org

www.savelambethwalk.org

>Ask Mayor to call in scheme: >Ask for Secretary of State

See SLW website for grounds for call in (breaches of London Plan Policies)



Ask on line:

planning.london.gov.uk/prs/s/

Search on Denby and submit online and / or

email GLA Planning Officer:

areena.berktold@london.gov.uk

Subject: Denby Court, GLA Ref:

2021/1261/S1 Submissions

accepted until 14 days after Stg 2

Referral by Lambeth (not yet submitted 13/04/22)

but

DON'T DELAY

(SoS) call in:

There is recent precedent- SoS Michael Gove recently called in a similar scheme in Barnet due to local pressure - scheme will now be reviewed.

Write to your MP:

Florence Eshalomi is your MP Ask her to write to the SoS to have scheme called in on same grounds as Mayoral call-in>

florence.eshalomi.mp@parliament.uk

[@parliament.uk](https://twitter.com/parliament.uk)

Include your postcode in any correspondence

michael.gove.mp@parliament.uk

Write FAO SoS

stuart.andrew.mp@parliament.uk

& Housing Minister

(advocate of local community design input). cc dept. email

correspondence@communities.gov.uk

>Vote for the candidates

in the forthcoming election you believe are [most likely to ditch the current scheme](#) and push for an alternative delivering new social homes!

Savelambethwalk will seek and report candidates positions on its website.

Join the campaign

www.savelambethwalk.org

Twitter: [@savelambethwalk.org](https://twitter.com/savelambethwalk)

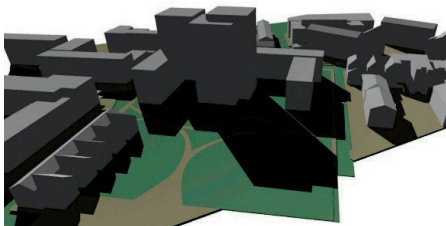
SUBSCRIBE FOR NEWS OF PUBLIC MEETINGS!

Donate to the campaign –

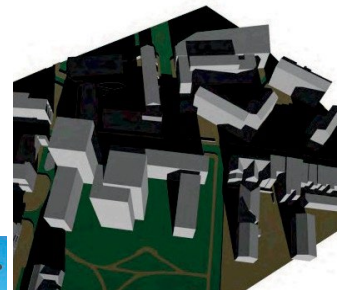
[//donate.giveasyoulive.com/fundraising/savelambethwalk](http://donate.giveasyoulive.com/fundraising/savelambethwalk)

The campaign continues!

REMEMBER WHAT WILL BE LOST IF DENBY TOWERS IS NOT STOPPED>>>>>>>>>>



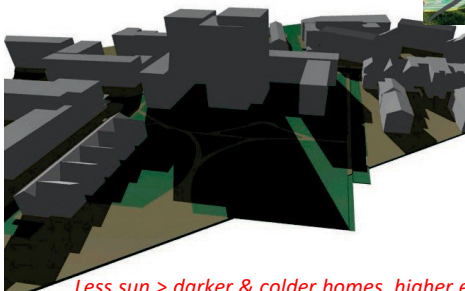
Hfl Two Towers scheme ignores BRE daylight standards and leaves Saperton Walk (Lambeth Walk) and nursery playground in shadow for the morning (right)



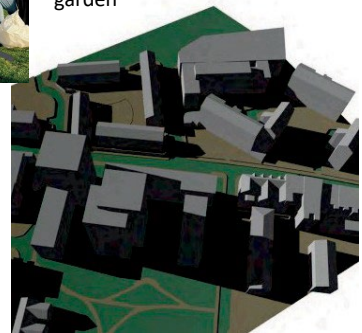
Hfl Two Towers scheme at 5pm in mid-summer (above) Shadows stretch across Lambeth Walk Green outside WTW school, where so many children and families play after school. By 7pm completely in shadow



and Fitzalan Street (below) in shadow in afternoon progressing to WTW School garden



Families picnicking on Lambeth Green after school (above)—will be colder & completely in shadow



Less sun > darker & colder homes, higher energy costs & fuel poverty. And adding to Climate Emergency