



SafeSourceHemp™

ADDRESS

9042 Lewis Ave.
Temperance, MI 48182

CONTACT

P : 419.279.5899
E : SafeSourceHemp@gmail.com
www.SafeSourceHemp.com

Business Plan

- Hemp Cultivation
- Processing / Manufacturing
- Distribution / Retail

A HEMP DERIVED CBD OILS & INDUSTRIAL PRODUCTS COMPANY

Safe Source Meds, LLC, a Michigan Limited Liability Company, doing business as SafeSourceHemp, is engaged in the commercial growth, processing and sale of hemp related products in the state of Michigan and beyond.

The company is dedicated to processing high quality, reliable CBD products for human and animal consumption and selling those products on-line and through brick and mortar retail outlets.

We have developed a second tier plan to accommodate the growth and processing of industrial hemp for use in building materials and the automotive market along with other uses such as textiles, paper, food, cosmetics and biodegradable plastic substitutes.

**An Overview for the
Investment Community**

CORPORATE CONTACT

Timothy D. Churchill

Executive Summary



SafeSourceHemp will operate under industrial hemp growing and processing licenses in the State of Michigan. The company is dedicated to processing high quality, reliable CBD products for human and animal consumption and will be a leader in the development of environmentally friendly alternative hemp uses.

COMPANY SUMMARY

SafeSourceHemp is a new vertically integrated CBD products supplier and retailer in Monroe, Michigan. We will grow hemp, then extract and refine the crude oil into a highly purified concentrate using a short path distillation process with 75% yields of impute material. The SafeSourceHemp brand will initially be distributed through an eCommerce store serving both wholesale and retail customer needs. Our onsite retail center will offer an unparalleled customer experience. Our two facilities will be located in close proximity to two of the busiest highways in southeastern Michigan - well positioning us for locally based patrons from the townships of Summerfield, Ida, Dundee, Bedford, Whiteford and Northwest Ohio. Our world headquarters will be established in a Monroe County Opportunity Zone (8318), strategically located to serve a national distribution market as we grow and expand our operational footprint.

MAIN GOALS

- Own and operate a state of the art hemp processing, manufacturing and retail outlet in the state of Michigan.
- To produce high-grade CBD products and build a recognizable brand in a rapidly growing industry.
- To locate in an Opportunity Zone in order to maximize investor returns and secure tax advantages.
- To process hemp fibers and core material for use in animal products, building materials, automotive parts, textiles, paper, cosmetics and biodegradable plastic substitutes.
- Capitalize on our co-op of farmers to grow up to 3,000 acres of various strains of industrial hemp and process that hemp on their behalf.
- Insure our success in the industry through diversity, while simultaneously positioning ourselves on the forefront of the increasing demand for hemp products across a variety of market sectors.

MISSION

To become a community sensitive and trusted provider of high quality hemp and hemp related products to a broad group of consumers. We will serve the needs of our customers by growing the highest quality hemp in the region and provide them with reliable and consistent infused products to grow their trust. Initially, we will aspire to provide our customers with access to the highest quality natural healing products available in the industry. As we grow and expand, we will become a trusted source of hemp fibers and core materials for a broad range of industries beyond CBD products. By becoming known for our quality of service and supply chain contacts, farmers throughout the mid-west will seek out SafeSourceHemp to purchase and process their biomass.

MAIN OBJECTIVES

Year 1: Secure all appropriate licenses. Raise funding for initial CapEx projects. Build-out a state of the art facility for processing the hemp harvested from our 25 acres of premium, organic soil. Advertise to create a consumer following and sell both online and through our wholesale and retail outlets.

Year 2: Incur annual income to support ongoing operational expenses. We anticipate monthly sales and capacity increasing steadily in the second year and all subsequent years. Implement our planned expansion into processing for the building materials, pet products and automotive industries. Secure contracts from farmers to fill pipeline to serve these markets.

Year 3: Continue to build on our trusted reputation as a producer of high-grade CBD products for both human and animal consumption. Focus upon expansion of CBD product lines and seek options of selling with other well-established retail centers to gain market share.

Year 4: Promote SafeSourceHemp CBD products North America to secure multiple sales channels. Continue to grow customer base for the building materials, pet products and automotive industries while seeking customers for other alternative uses.

PRODUCTS AND SERVICES

By year four, SafeSourceHemp will have the ability to vegetate up to 600,000 plants on 400 acres of prime farmland. Up to 25 acres will be used to produce our premium CBD line that can immediately be labelled as Certified Organic and Non-GMO products. Through Clean Farming practices which are currently in place on our remaining 375 acres, we will be able to promote all 400 acres as Certified Organic by year six.

Our extraction and manufacturing operations will produce biomass in a clean and compliant facility – ensuring that all extracts and infused products to be distributed meet all regulatory requirements and have passed the required laboratory testing. Our online presence will serve as an informational portal highlighting CBD products and the diverse uses of industrial hemp.

MARKET OPPORTUNITIES

Currently, at least 47 countries cultivate hemp for commercial or research purposes. In June 2018, the US Senate passed its 2018 Farm Bill and in December 2018, President Trump signed the bill into law to make hemp legal for the first time since the 1930s. The bill removes hemp from the Controlled Substances Act, effectively legalizing the plant federally and allowing it to be grown, processed, and sold as an agricultural commodity. SafeSourceHemp will be in 100% compliance with the pilot program developed by the State of Michigan.

As outlined in a new report “Global State of Hemp: 2019 Industry Outlook” from New Frontier Data, the global hemp industry reached \$3.7 billion in 2018 and is projected to exceed \$5.7 billion in 2020 with the US hemp market representing 32%. Industrial hemp markets are poised to become a burgeoning market space providing consumer driven products owing to their environmentally friendly qualities.

The US market for CBD products hit \$291 million in 2017 – including both hemp and marijuana-derived sources – while the hemp CBD market has reached an estimated retail value of \$145 million. In 2018, hemp-derived CBD products sales accounted for about \$390 million. Hemp legalization and new methods of CBD oil extraction with a growing number of various CBD infused products available in mainstream markets will lead to an increase in consumer spending on CBD products.

Overall hemp acreage reached 78,176 in 2018 recording a tripling of land under hemp from 25,713 in 2017, with the total number of hemp growing states up to 23 from 19 states, according to the American hemp advocacy group Vote Hemp. The number of acres of hemp licensed in 2019 totaled over 500,000 in 34 states. The total number of hemp licenses increased from 3,546 in 2018 to 16,877 in 2019.

According to the report from New Frontier Data, US sales of hemp products estimated at about \$1 billion in 2018, are projected to grow 27% annually to reach \$2.6 billion by 2022 and about half of this (\$1.3 billion) are expected to come from hemp-derived CBD products.

■ U.S. Total CBD Sales, 2014-2022 (in \$ millions)

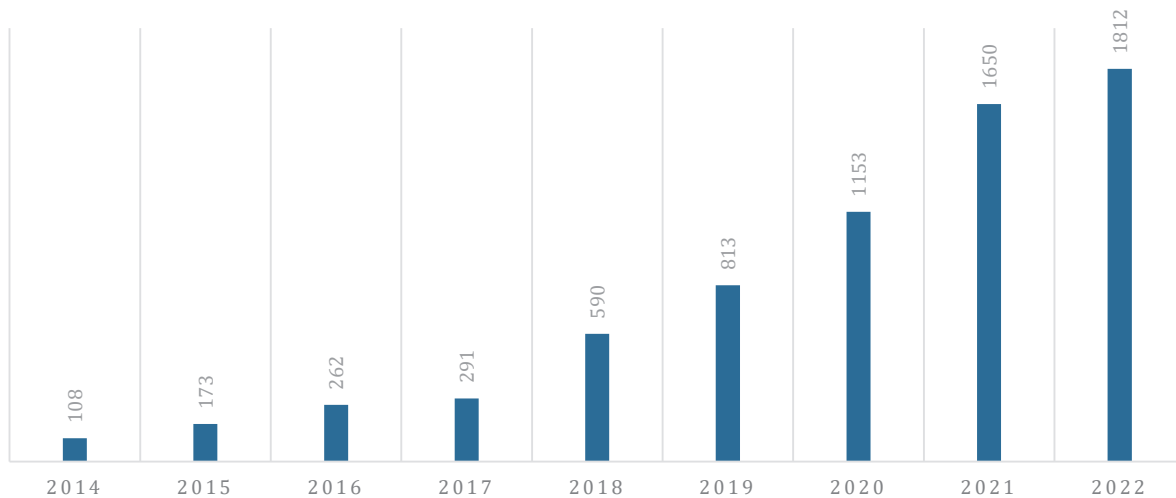


Figure 1 - Total US CBD Sales 2014 - 2022

Business Objective



SafeSourceHemp will utilize its industrial hemp growing and processing licenses in Monroe, Michigan.

The company is dedicated to processing high quality, reliable CBD products for human and animal consumption and will be a leader in the development of environmentally friendly alternative hemp uses.

SafeSourceHemp was incorporated in 2018 and is the collaboration of five professionals from diverse and unique industry specific backgrounds that have combined their knowledge and insight to make an undervalued product more accessible to a diverse population. As acceptance continues to grow for this natural product that brings relief and sustainable options to millions of people around the world, SafeSourceHemp will be at the forefront of providing products that are safe, effective and affordable.

OBJECTIVE

To become the industry leader by developing one of the most innovative vertically integrated industrial hemp companies that grows, processes and sells products to customers locally in the State of Michigan and across the continental United States.

VISION

The property in the Monroe County Opportunity Zone (8318) will be the first of its kind in southeastern Michigan. When fully developed, our corporate landscape will include multiple facilities dedicated to the processing of industrial hemp for numerous alternative uses. Initially, the company will focus on its CBD product lines for human and animal consumption, but will quickly move into facilitating the growth of the supply chain servicing the building materials and automotive industries. Expansion into other uses of hemp fiber for textiles, paper, fuel, pet products, etc. will occur as opportunities and capital come available.

MISSION

To become a community sensitive and trusted provider of high quality hemp and hemp related products to a broad group of consumers. We will serve the needs of our customers by growing the highest quality hemp in the region and provide them with reliable and consistent infused products to grow their trust. Initially, we will aspire to provide our customers with access to the highest quality natural healing products available in the industry. As we grow and expand, we will become a trusted source of hemp fibers and core materials for a broad range of industries beyond CBD products. By becoming known for our quality of service and supply chain contacts, farmers throughout the midwest will seek out SafeSourceHemp to purchase and process their biomass.

Business Description

SafeSourceHemp currently has access to 400 acres of farmland in southeastern Michigan. Over the next five years as we reach capacity, we will have the ability to annually vegetate up to 600,000 plants of industrial hemp that will be incorporated into our line of CBD products.



SafeSourceHemp is dedicated to producing a wide range of CBD concentrates and infused products to serve the needs of our target customers. Hemp grown on our first 25 acres can be labelled as Certified Organic and Non-GMO and sold at a premium.

The SafeSourceHemp brand of CBD products will be distributed through both a wholesale distribution chain and a retail center that will offer an unparalleled customer experience. Our two facilities will be located in close proximity to two of the busiest highways in southeastern Michigan - well positioning us for locally based patrons from the townships of Summerfield,

Ida, Dundee, Whiteford, Bedford and Northwest Ohio. Our world headquarters will be established in a Monroe County Opportunity Zone (8318), strategically located to serve a national distribution market as we grow and expand our operational footprint.

SafeSourceHemp will, likewise, have a robust eCommerce presence serving not only the local community, but also the continental United States and world markets.

As our CBD products gain market traction and sales revenues expand, SafeSourceHemp will capitalize upon the opportunities in the building materials and automotive markets. Our expansion will allow us to strategically capitalize on the parts of the hemp plant that are used to make products in these industries. Often this left over biomass is seen as "garbage" and is destroyed or left to rot in the fields. Our desire at SafeSourceHemp is to process this plant biomass into raw material that will be utilized in creating safe, sustainable and environmentally friendly products for personal and industrial consumption.

TARGET CUSTOMERS

The success of any business can be tied directly to the customers that purchase the products or services. SafeSourceHemp will ensure that all our customers are provided with exemplary treatment and service when they visit our wholesale, e-commerce based platform or retail outlet. We will have CRM software that will enable us to manage a one-on-one relationship with our clients no matter how large our customer base becomes. We will ensure that we involve patrons in their own health decisions and assist them with making the right choices for their unique personal needs. We will also develop CBD products for animals and target their owners in our advertising campaigns.

As previously mentioned, we intend to be a market sector leader in the building materials, pet products and automotive industries and will target Fortune 500 manufacturers of these products to offer them safe and environmentally friendly alternatives to wood, fiberglass, paper and plastics.



Main Products



OIL-BASED CAPSULES

CBD capsules are simply a pill-form of CBD extract that is swallowed like any other supplement. These capsules come in either softgels or in a two-piece capsule. There are a couple main types of capsules - a liquid-containing oil-based capsule and a powder-containing capsule.



OIL-BASED TINCTURES

Often referred to simply as CBD oil, a tincture is an oil-carried form of CBD that is consumed sublingually by placing it under the tongue. This liquid product that usually comes in a small bottle with a dropper. The liquid inside is comprised of several components:

- CBD Extract or CBD Isolate Base
 - A Carrier Oil
- Optional Additives (Sweeteners, Flavors, Terpenes & More)



TOPICALS & BALMS

Ingesting or inhaling CBD isn't the only way to enjoy the effects of the benefit-providing cannabinoid. There are endocannabinoid receptors in the brain, throughout the nervous system, and in the skin. Skin-based receptors mean that applying topicals directly to a sore or irritated area can provide localized relief.

To ensure a consistent supply of CBD products are available to be sold through our retail outlet and online, SafeSourceHemp will initially offer a private labelled product procured from another wholesaler. These products will either be offered under the SafeSourceHemp brand or positioned as a completely different product offering.

Expansion Products

While developing the CBD product offering, SafeSourceHemp will be simultaneously building its secondary division - the processing and conversion of hemp fibers for use in other industries. Outlined below are the three key markets of animal products, building materials and automotive parts where we will begin to immediately seek out customers and contracts.



ANIMAL PRODUCTS

Industrial hemp can provide a low cost and super-absorbent material for animal care. Along with its antibacterial and anti-fungal properties, hemp bedding and litters don't contain some of the problematic phenols that may be present in other plant-based products.



HOME INSULATION

Insulation made from industrial hemp fibres comes in a variety of forms, including batts, rolls and solid panels. As in other building applications, hemp insulation doesn't rot, helps to control moisture and is pest resistant - and is recyclable.



PARTICLEBOARD

Particleboard based on hemp mixed with other fibers such as flax is lighter, stronger and more moisture resistant than its conventional counterpart. While conventional particleboard is often made from wood waste, supply issues have seen trees felled specifically for chipboard materials.



AUTOMOTIVE PARTS

Metal, plastic, fabric, even lubricants and fuel can be made out of hemp. Carbon fiber panels, popular on sports cars and as aftermarket performance upgrades, can be replaced by interwoven hemp fabric and epoxy. Hemp plastics are strong, durable and lighter than steel or aluminum.

20-Acre Crop Location

The area outlined below represents the 20 acres of land where the hemp for our premium line of CBD products will be grown. SafeSourceHemp will lease the property, upon which multiple strains of hemp will be grown each year, from Darren Koraleski, a senior partner of SafeSourceHemp.



Figure 2 - Property Outline for Initial 20 Acres



Figure 3 - Sanitized Greenhouse Ready for Seeding

The Property

- Located at 17552 Ida Center Road, Petersburg, MI 49270
- Property Owner: Darren Koraleski
- Property Type: Residential and Agricultural
- Lot Size: 45 acres
- Farmable Acreage: ~20 acres
- Two 4,500 ft² fully functional climate controlled greenhouses
- Estimated lease cost is budgeted for \$350/acre per month in use

The property at 17552 Ida Center Road has been in the Koraleski family since 1978. Darren first put money down on the property at the surprisingly early age of 10 years old and 40 years later now calls it home.

The acreage that will be planted sits a half mile back off Ida Center Road - offering privacy, safety and security by visually isolating the crop.

All CBD products produced from this land will receive the labels of Non-GMO and Certified Organic - two designations health conscious and boutique buyers appreciate and pay a premium to obtain.

Positioned for Growth

SafeSourceHemp will have no problem scaling over the next five years. With 380 acres of land available for lease and seven acres of greenhouse space, Koraleski Farm and Greenhouses offer SafeSourceHemp the opportunity to grow quickly.

SafeSourceHemp can ultimately lease the remaining 380 acres of Koraleski Farm & Greenhouse property for a total of 400 acres devoted to CBD production. The Koraleski Farm & Greenhouse business is primarily focused on growing flowers and vegetables indoors, leaving the outdoor property available as SafeSourceHemp requires it for expansion. The current schedule for utilizing the land is as follows:

- Year 1: 20 acres (Original plot at 17552 Ida Center Road)
- Year 2: 50 acres (Original plot + 30 acres of Koraleski Farm property)
- Year 3: 100 acres (Original plot + 80 acres of Koraleski Farm property)
- Year 4: 200 acres (Original plot + 180 acres of Koraleski Farm property)
- Year 5: 400 acres (Original plot + the remaining 380 acres of Koraleski Farm property)



At any given time, this schedule can be accelerated. For the sake of this business plan, the above schedule is used and the lease rate per acre is estimated at \$350/acre per month in use. The Koraleski family is also a member of a local co-op of farmers who own up to 3,000 acres of farm land within this region of south eastern Michigan. SafeSourceHemp will be positioned to scale the business for production of raw material for products other than CBD through the utilization of this land as necessary.

History of Koraleski Farms & Greenhouse

- Established in 1938 by Ferdinand "Doc" Koraleski
- Family owned and operated for over 80 years
- Specialize in over 2,000 varieties of flowers and vegetable transplants

The Property

- Located at 19201 LuLu Road, Petersburg, MI 49270
- Property Type: Commercial and Agricultural
- Lot Size: 400 acres
- Farmable Acreage: ~380 acres
- Seven acres of fully functional climate controlled greenhouses
- Estimated lease cost is budgeted for \$350/acre per month in use



Figure 4 - Aerial photograph of Koraleski Farms & Greenhouses

Opportunity Zones

The concept of Opportunity Zones was created in the 2017 U.S. Tax Cuts and Jobs Act. Opportunity Zones are designed to increase the amount of patient (long-term) capital investments in low-income communities around the country that have been cut off from capital and have experienced a lack of business growth.

There are three types of tax incentives that relate to the treatment of capital gains. Each incentive is tied to the longevity of an investor’s stake in a qualified Opportunity Fund. The greatest incentives are reserved for investments held for 10 years or more.

SafeSourceHemp has chosen to invest in an opportunity zone (OZ) in Southeastern Michigan for the inherent benefits to our

company and for those that choose to invest with us. Shown below are the closest opportunity zones within Monroe and Lenawee counties. With our farm properties located in Petersburg, MI, the cities of Adrian and Monroe are the closest municipalities that could accommodate our needs.

Upon closer research, the two Monroe County OZs shown below in Figures 6 & 7 offer us the greatest opportunity.



Figure 5 - SE Michigan OZs

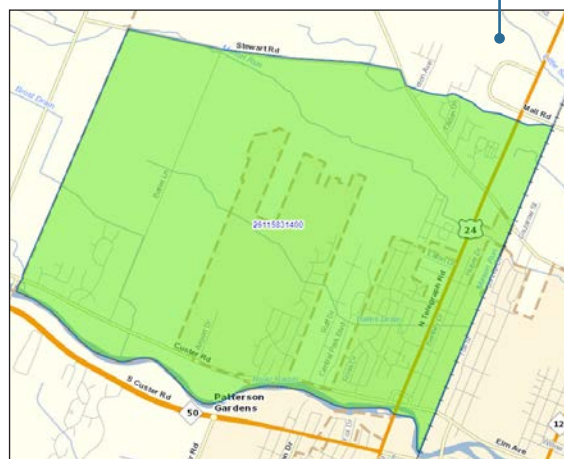


Figure 6 - Census Tract 26115831400 (Monroe Cty.)

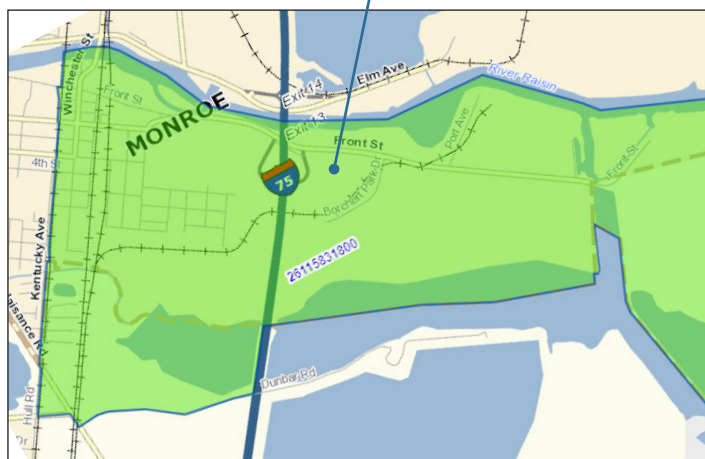


Figure 7 - Census Tract 26115831800 (Monroe Cty.)

In the Monroe County OZ

SafeSourceHemp has located the ideal property at 1300 Wood Street, Monroe, MI 48161 that will serve as our world headquarters and main facility. It is located in Census Tract 26115831800. It is over 26,000 ft² of manufacturing and administrative office space.



Figure 8 - Aerial Photo of 1300 Wood St.



Figure 9 - Current Photo of Office Space

The Property

- Under Contract with SafeSourceHemp
- Property Type: Industrial
- Lot Size: 5.5 acres
- Total Size: 26,080 ft²
- Office Space: 3,500 ft²
- Plant Space: 22,580 ft²
- Amenities: 3 phase 400 amp electric, four (4) large overhead doors, fenced lot, one (1) mile from I-75

The property at 1300 Wood St. is ideal for the processing of biomass into byproduct that will serve as the bases raw material for a multitued of other products. With 42' tall ceilings throughout the plant and a clearance of 28', it will allow for deliveries via tractor trailers, storage of industrial hemp biomass, large machinery and the easy transport of said raw materials throughout the facility.

The 3,500 ft² office space will also allow SafeSourceHemp to house a number of employees and staff - bringing jobs to the opportunity zone - and Monroe County as a whole.



Figure 10 - The Wood St. Property Within Opportunity Zone 8318

The Wood St Facility

A purchase agreement has been secured for the 26,080 ft² facility located at 1300 Wood St. in the 8318 Monroe County opportunity zone. The site is under contract with SafeSourceHemp and unoccupied. We will take immediate possession at the time of closing and will commence with renovation of the facility.

The renderings on these two pages are meant to be inspirational in nature and should not be considered final architectural drawings.



Figure 11 - Primary Entrance

This rendering shows a number of exterior improvements. The roof and siding will be painted green and tan respectively. The building will be well branded with a large SafeSourceHemp logo to welcome visitors. Improvements will be made to the office space including centering the main entrance, installing new windows and painting the structure. A new lot for staff and visitors will be created and made ADA compliant with handicap parking and an accessible building. Landscaping and a gated entryway will beautify and protect the property from intrusion.



Figure 12 - The Back Lot, Three Bay Entrances & Loading Dock

Concrete installed in the front of the property will extend to the back and surround the entire facility. Additional parking for staff will exist along the back of the building. The lot will be large enough to accommodate full size tractor trailers that will not only deliver bales of industrial hemp, but will also back into the newly integrated loading dock for the removal and transportation of raw materials to our customers. The entrance to the warehouse on the left will allow for semis and other delivery vehicles to pull through, drop their load and exit on the north side of the property as illustrated below.



Figure 13 - Exiting the Drop Off Warehouse

Upon entering the back of the facility, trucks and trailers with their payload will be able to drop their biomass in the west warehouse and exit to the north. With concrete surrounding the facility, smaller vehicles will be able to travel along the west side of the building to reach the exit. Also shown in this rendering is a secondary parking lot available for staff and visitors - also ADA compliant.

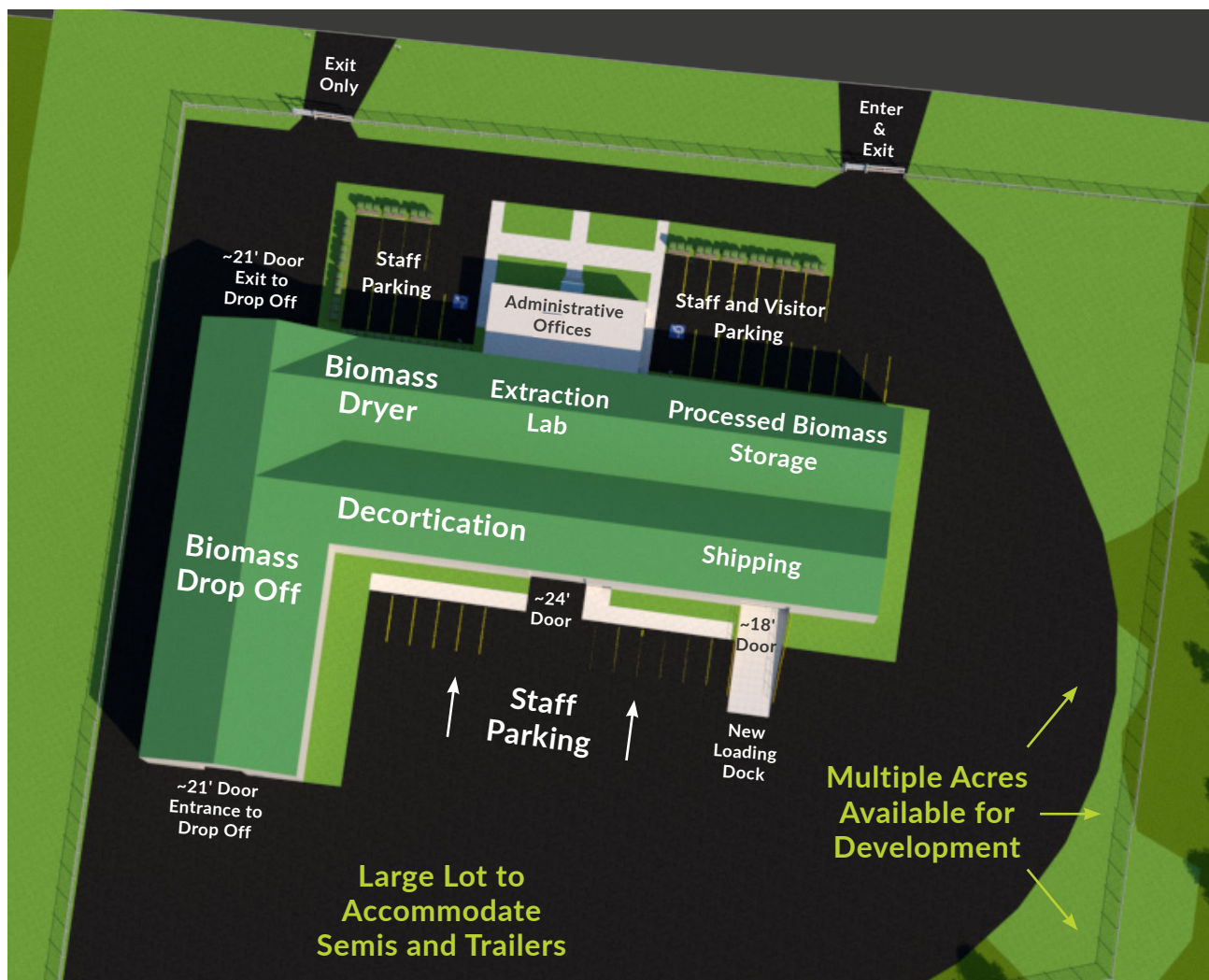


Figure 14 - Property & Facility Schematic



Figure 15 - Before & After Offices



Figure 16 - Before & After Warehouse



Figure 17 - Before & After Back Lot

The Summerfield Rd Facility

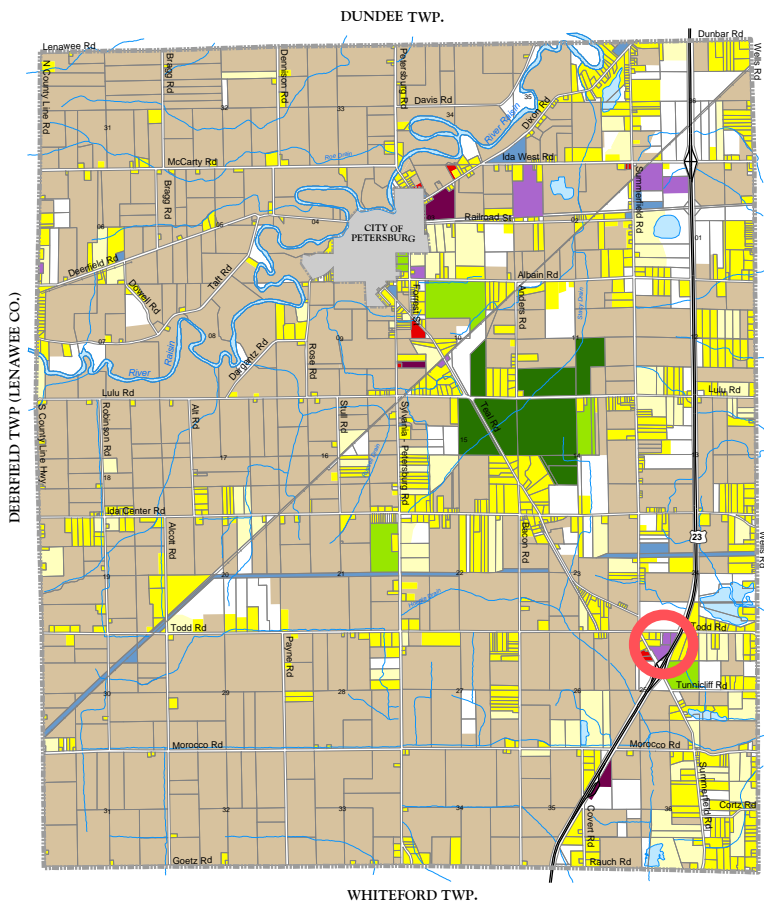
A purchase option has been secured for the 13,250 ft² facility located at 6923 Summerfield Road. While the site is currently occupied, it has been deemed a favorable location for this operation in Monroe County due to its position on US 23 - a major North/South thoroughfare in Michigan.



The Property

- Currently Coil Line Installations Manufacturing
- Property Type: Industrial
- Lot Size: ~10 acres
- Building Size: 13,250 ft²
- Showroom: 4,000 ft²
- Warehouse: 9,250 ft²
- Amenities: 3 phase 400 amp electric and two (2) 12' overhead doors

Figure 18 - Facility Rendering



The subject location is one of its most important attributes. It would be the site of the first CBD products facility when crossing the Ohio border into Michigan and is approximately eight (8) miles from the Ohio border on US 23, which is the main expressway traversing Michigan from south to north.

The subject location is located eight miles south of Cabela's in Dundee, Michigan which is Michigan's largest tourist attraction drawing 6.1 million visitors annually.

In addition to this, the property has 1,000 square feet frontage on US 23 with traffic counts in each direction of 37,500 cars per day and allows for significant visibility and signage opportunities.

Figure 19 - Property Location

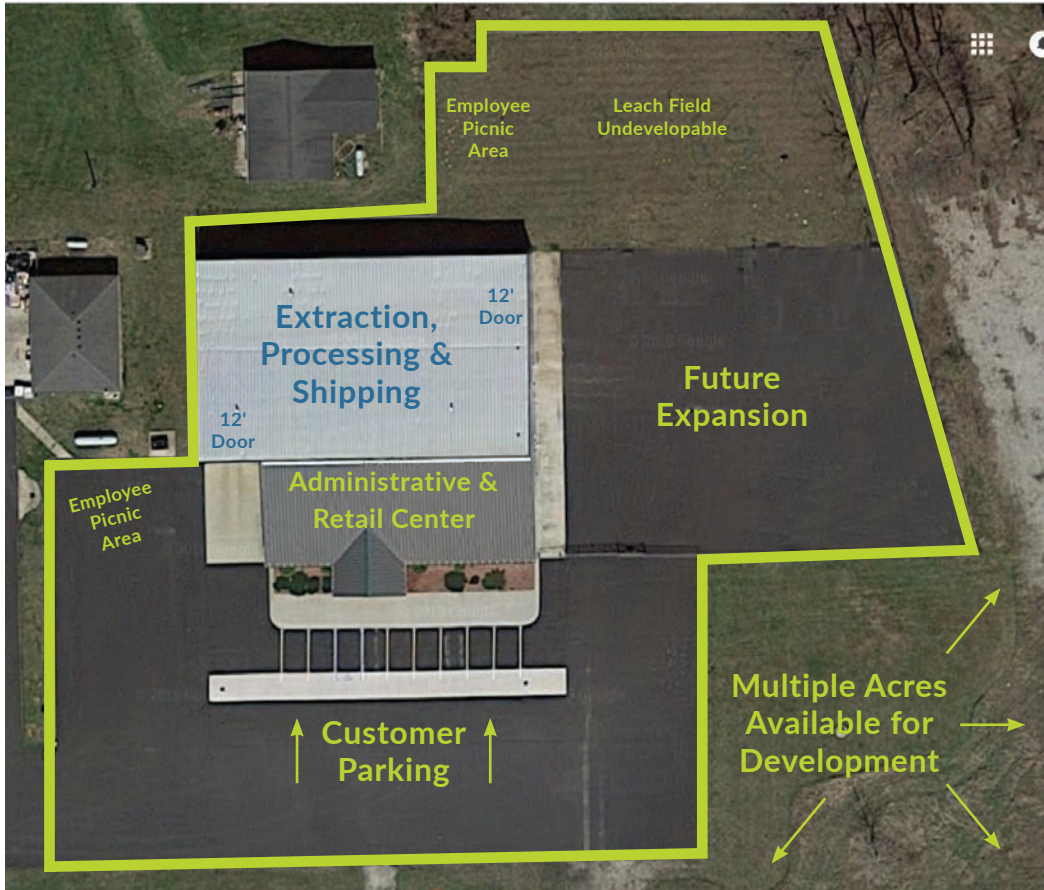
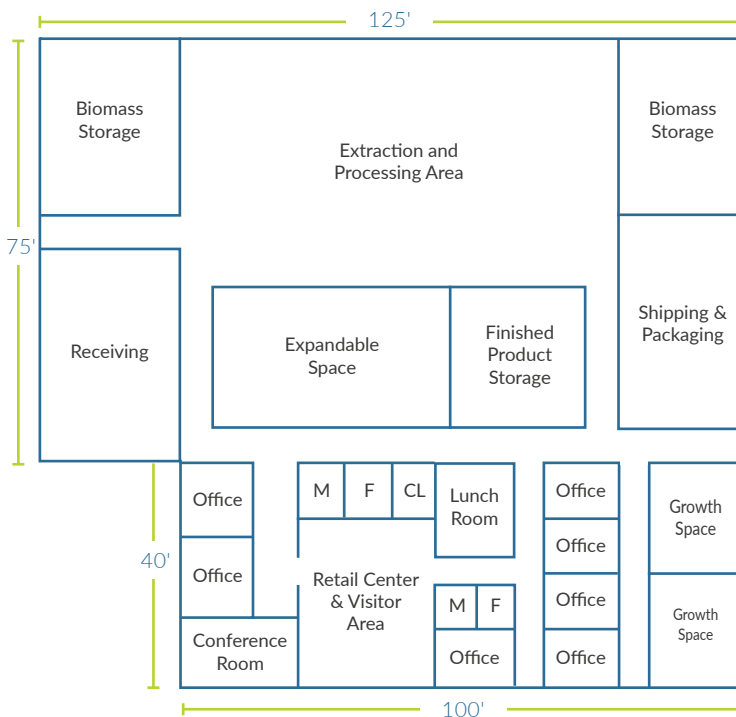


Figure 20 - Property & Facility Schematic

The Facility

Our extraction, processing, shipping and retail center areas will include:

- Receiving (975 ft²)
- Extraction & Processing Area (3,750 ft²)
- Expandable Space (800 ft²)
- Biomass Storage (1,500 ft²)
- Finished Product Storage (625 ft²)
- Shipping & Packaging (750 ft²)
- Growth Space (680 ft²)
- Lunch Room (210 ft²)
- Rest Rooms (260 ft²)
- Conference Room (240 ft²)
- Office Space (975 ft²)
- Retail Center & Visitor Area (1,000 ft²)



Marketing Strategy

Online advertising platforms continue to be one of the most effective forums through which companies can market their products. Google, Facebook and Twitter all have advertising policies around the promotion of health-based products. The passage of the 2018 Farm Bill makes these forums viable marketing options for our products and industry specific brands.



Through the use of a variety of paid advertising networks we intend to build a strong following among boutique and general customer bases. Our marketing strategies will capitalize upon tag specific keywords including but not limited to: hemp oil, CBD oil, CBD isolate, CBD wholesale and CBD infused products.

WEBSITE DESIGN & DEVELOPMENT



MODERN DESIGN

We will have a professionally-designed website on the WordPress platform with an integrated payment system. Visitors will also find extensive thought leadership in the cannabis industry. We will post product photos with detailed information and special promotions to encourage new visitors to try and returning customers to repeat purchases.



RESPONSIVE WEBSITE

The website will be responsively designed, thus allowing customers and visitors to access information and interact from their desktop, tablets and mobile devices.

SOCIAL MEDIA MARKETING PLAN

We intend to advertise through popular online platforms, while simultaneously promoting a significant social media presence. Appropriate forums will be monitored daily, with dedicated staff resources to be active and knowledgeable participants. We will develop a social media content strategy which will include Twitter, Facebook, Instagram, LinkedIn and YouTube. Our staff will be trained in the promotion of CBD products.



OTHER MARKETING STRATEGIES



SafeSourceHemp's marketing efforts will include but not be limited to the following strategies and tactics:

- ✔ **Brochures:** We will produce high-quality brochures that will be distributed to clients.
- ✔ **Email Marketing:** Effective use of SafeSourceHemp's CRM to encourage first time and repeat visits.
- ✔ **SEO/SEM:** Capture customer attention at the point their search begins online; own keywords
- ✔ **Online Marketplaces:** Full profiles and product offering on Amazon and other online marketplaces.
- ✔ **Branded Products:** Items such as shirts, hats, containers, etc. will be offered through our online store.
- ✔ **Sponsorships:** Health, or related industry events to gain brand exposure of SafeSourceHemp with community.
- ✔ **Practitioner Info Kits:** Information kits will include registration forms, brochures, and general information on the use of CBD products. They will also provide information on how to process orders.

Our Timing

NOTICE: The time line outlined below is illustrative of an 18 month time line. While it uses specific dates, an actual calendar will be developed once licenses are issued.

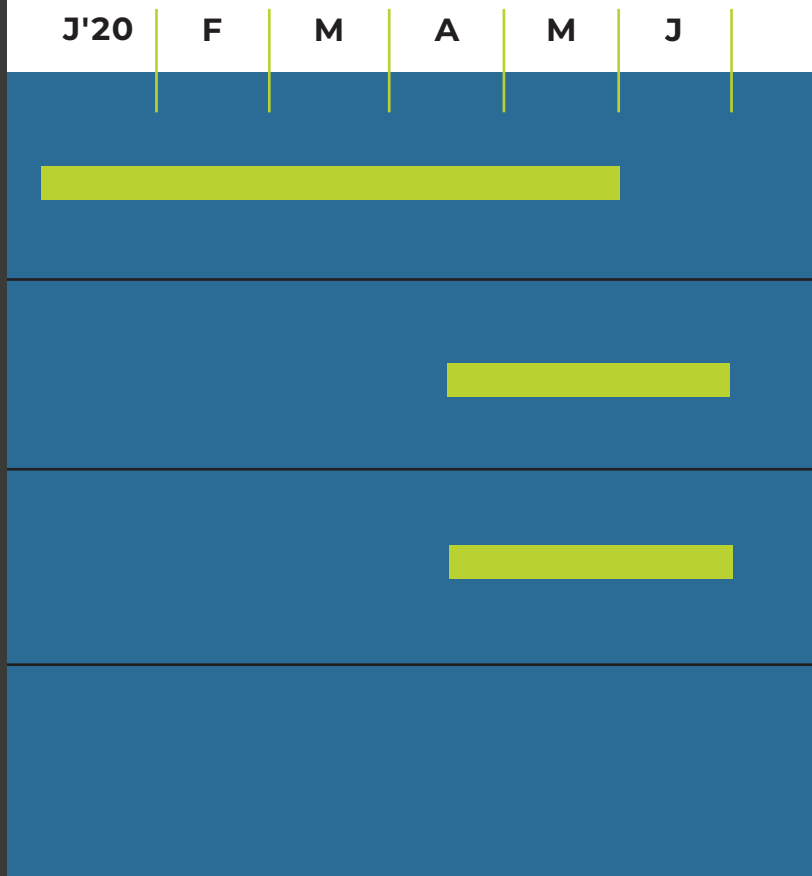
MONTH (18 MONTHS)

1 // LICENSING, FINANCING AND ONLINE STORE

2 // PLANTING, HARVEST, PROCESS & ONLINE GROWTH

3 // PROPERTY AND BUILD-OUT

4 // CONTINUED GROWTH AND 2021 PLANTING/HARVEST



1 // LICENSING, FINANCING AND ONLINE STORE

Effective January 1, 2020, SafeSourceHemp will begin to pursue the appropriate licenses required to grow and process hemp-derived CBD products. This business plan will be utilized to secure financing for the growing of acreage beginning in April 2020. Properties to build-out and convert into state of the art processing facilities and a retail outlet center will be secured. A responsive designed website will launch in Q2 - selling private labeled products sourced from US based wholesalers.

Months 1 - 5

2 // PLANTING, HARVEST, PROCESS & ONLINE GROWTH

In April 2020, SafeSourceHemp will plant up to 25 acres of hemp. This will represent 5% of maximum capacity. The first harvest will be scheduled for August/September 2020. Pending the timely build-out of our processing facility, the harvest will be processed internally. If necessary, it will be processed and packaged by a contracted supplier while our facility is completed. SafeSourceHemp's own grown hemp-derived products will be available for sale in Q4 2020

Months 4 - 10

J | A | S | O | N | D | J'21 | F | M | A | M | J



3 // PROPERTY BUILD-OUT AND PROCESSING

The purchase and build-out of the facilities is estimated to take four to eight months from the time the point of vacancy until it is approved for operations. At the time of possession all architectural renderings and plans will be implemented - thus allowing the Executive Team and SafeSourceHemp's managers to move forward with contracting qualified contractors and manufacturers to begin the build-outs once possession occurs.

Months 6 - 14

4 // CONTINUED GROWTH AND 2021 PLANTING/HARVEST

Once the processing and retail facility is brought online, SafeSourceHemp can begin taking orders to process for other farmers. This will coincide with the cultivation of seedlings for the 2021 planting season to take place in April 2021.

Months 14 - 18



Our Core Values

Just like you - we have values that we're unwilling to compromise upon. Here are our top five.

These five values provide the cornerstone principles upon which this company was founded. We will remain focused upon each one as we build this company over the next year and beyond. We will ensure that our employees, products and services are bound to these values so that our customers receive the utmost care and attention.

KNOWLEDGE

While hemp has been around for ages, it has not always been well received. Our experienced staff will welcome the opportunity to share their expertise and knowledge with each and every customer - whether out in the community, in our retail shop or online.



INNOVATION

SafeSourceHemp will always be focused upon ways to expand without compromising the cornerstone values our company will be founded upon. Our business will always be on the cutting edge of product design and customer service innovations to set the highest bar possible for the industry.



TRANSPARENCY

We take great pride in our openness with the community and governing bodies; our state-of-the-art facility will be designed to exceed local, state and federal regulations and our customer relationship marketing (CRM) platform will exceed best practices for measuring the process of tracking CBD product sales.



INTEGRITY

Our customer's health and well-being is not to be taken lightly. We stand behind the production and quality of all our products, holding ourselves to the highest standards. Our associates will be versed in all aspects of growing, processing and selling the best CBD and hemp based products on the market.



SOPHISTICATION

Every aspect of our business from the colors in our logo, our organic growth process and how we greet our visitors has been carefully measured and considered. We are proud of the trust bestowed upon us by the community and will always strive to maintain the highest standards and safeguard our trusted reputation.



Executive Team

TIMOTHY D. CHURCHILL

A 1977 University of Michigan graduate with a Juris Doctor degree in 1984 from the Thomas M. Cooley Law School, Tim is now a Senior Partner in the Temperance, MI law firm of Churchill, Smith, Rice, Swinkey & Kuhn. He is a member of the Michigan State, Monroe County, Toledo and American Bar Associations and practices a broad range of legal services.

JOSEPH (JOE) LAMBERT

Joe is a 30+ year veteran in law enforcement. He received his license through the Michigan State Police Academy and has served on both the FBI drug and gang task enforcement and the Monroe County drug enforcement team in narcotics. Joe also has 10+ years with the Bedford Township Fire Department and received his State Fire Fighters license 1&2.

KERI W. SAMIEC

A veteran business strategist, Keri brings over 20 years of strategic consultation for Fortune 500 companies in CPG, building materials and capital goods. He is a graduate of The University of Toledo - having obtained his BBA in 1997 and MBA in 2003. Currently Keri is in his third year of studies at the University of Florida pursuing an advanced degree in Urban Design and Planning.

DARREN KORALESKI

A fourth generation farmer, Darren has over 30 years agronomy experience. His working knowledge of plant propagation, crop production, organic and integrated pest management, chemical application and general horticultural management is unmatched in the industry. Darren is a managing partner of Koraleski Farms and Greenhouse and was the designer of their Retail Design Center which opened in 1994 and is still operating today.

ZUBIN J. MISTRY, Ph.D.

Dr. Mistry is a licensed Clinical Psychologist in the states of Michigan, Ohio and New York. He has over 30 years of experience in Clinical, Forensic and Organizational Psychology. He is a published author and speaker on the psycho-neurological impact of digital technology on the human brain. At the turn of the century, he launched a cutting edge wellness initiative, designing programs to improve human productivity and promote alternative healing modalities. He is a graduate of Michigan State University (BS), Eastern Michigan University (MS) and The Union Institute and University of Cincinnati (Ph.D.).