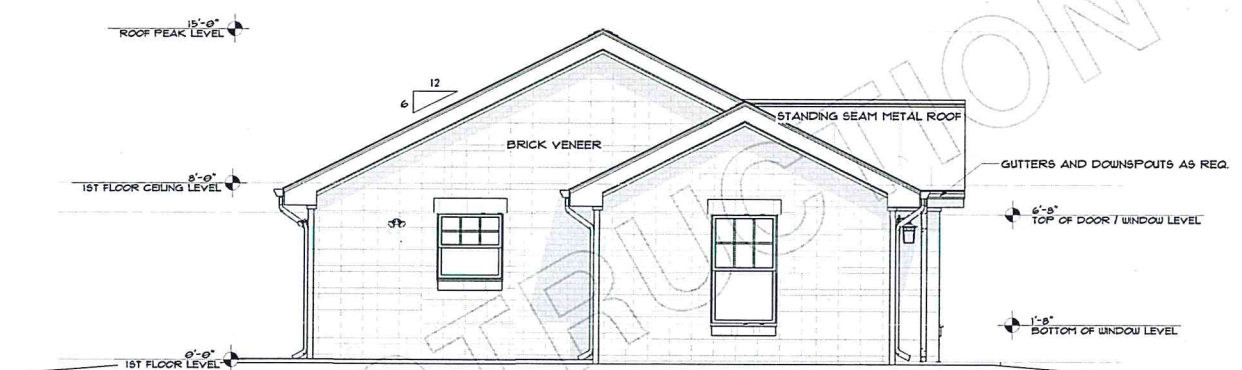


1118 S. WEST ST.
STILLWATER, OKLAHOMA



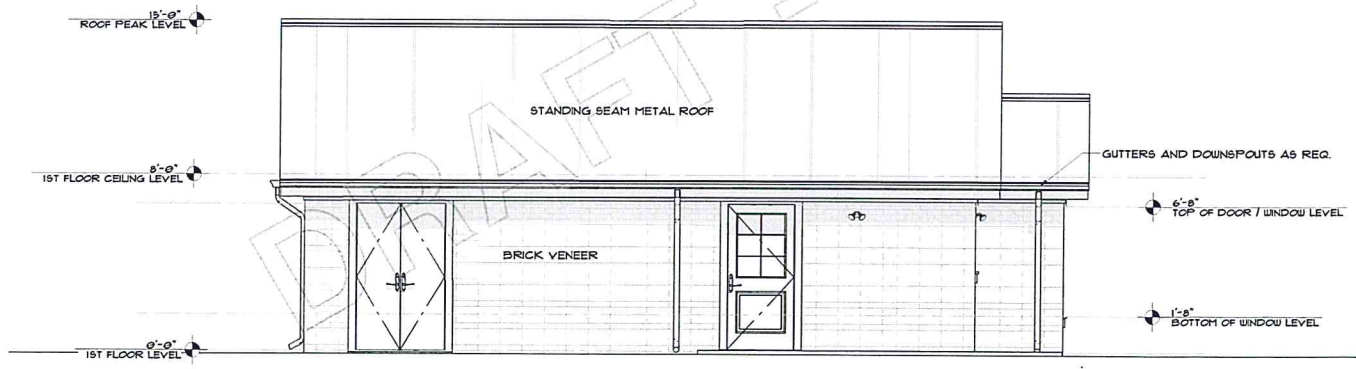
FRONT ELEVATION

SCALE: 1/4" = 1'-0"



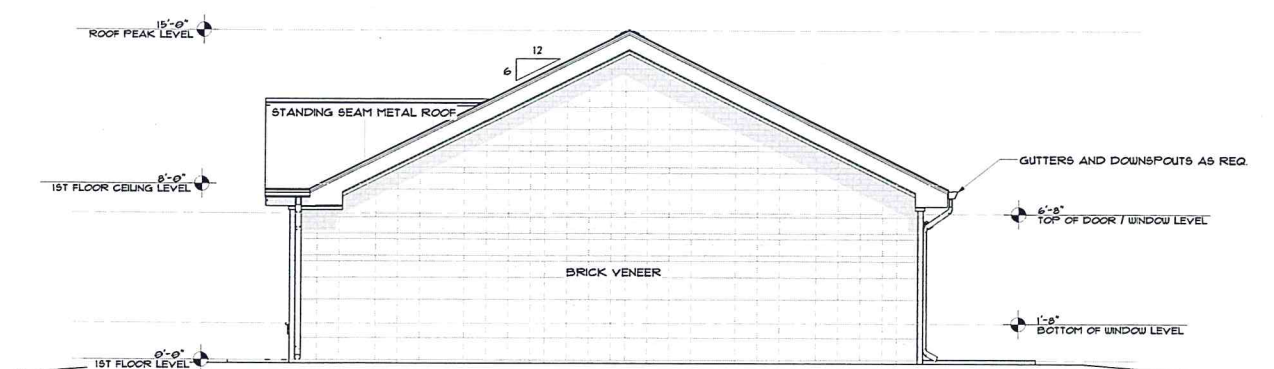
SIDE ELEVATION

SCALE: 1/4" = 1'-0"



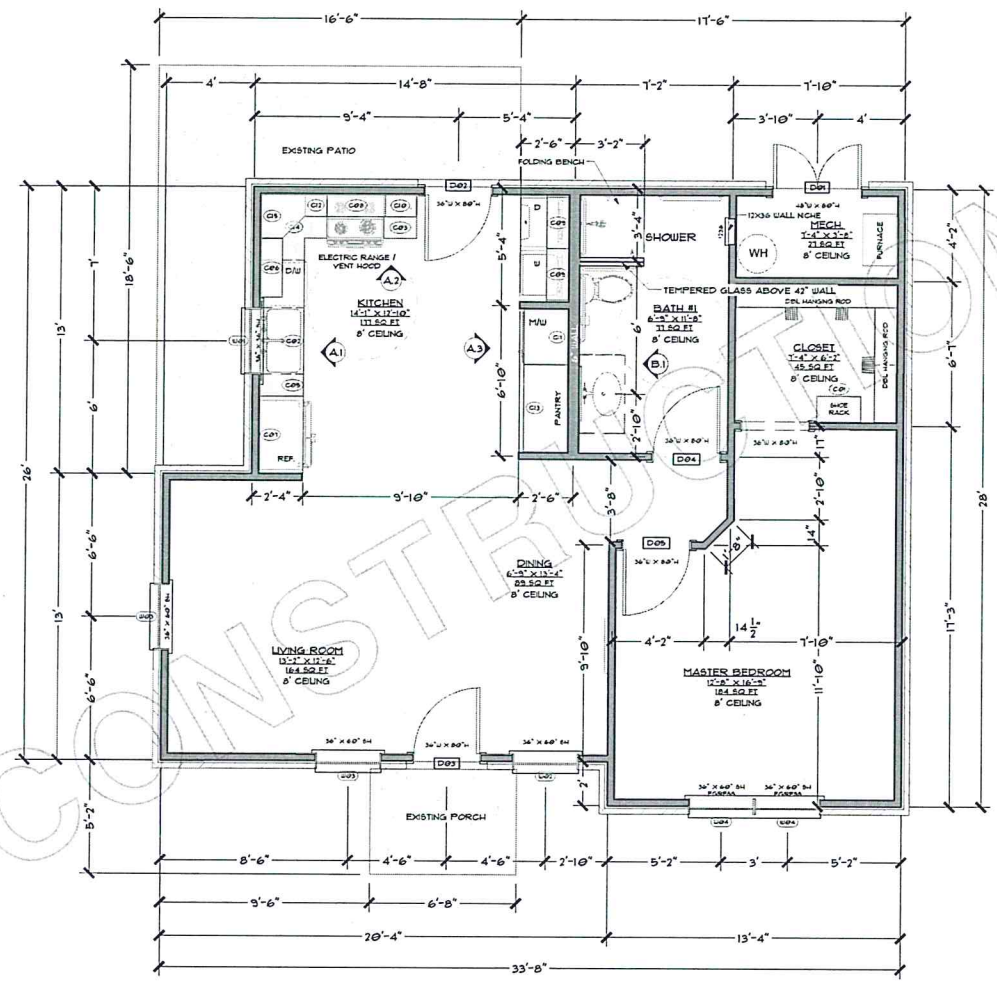
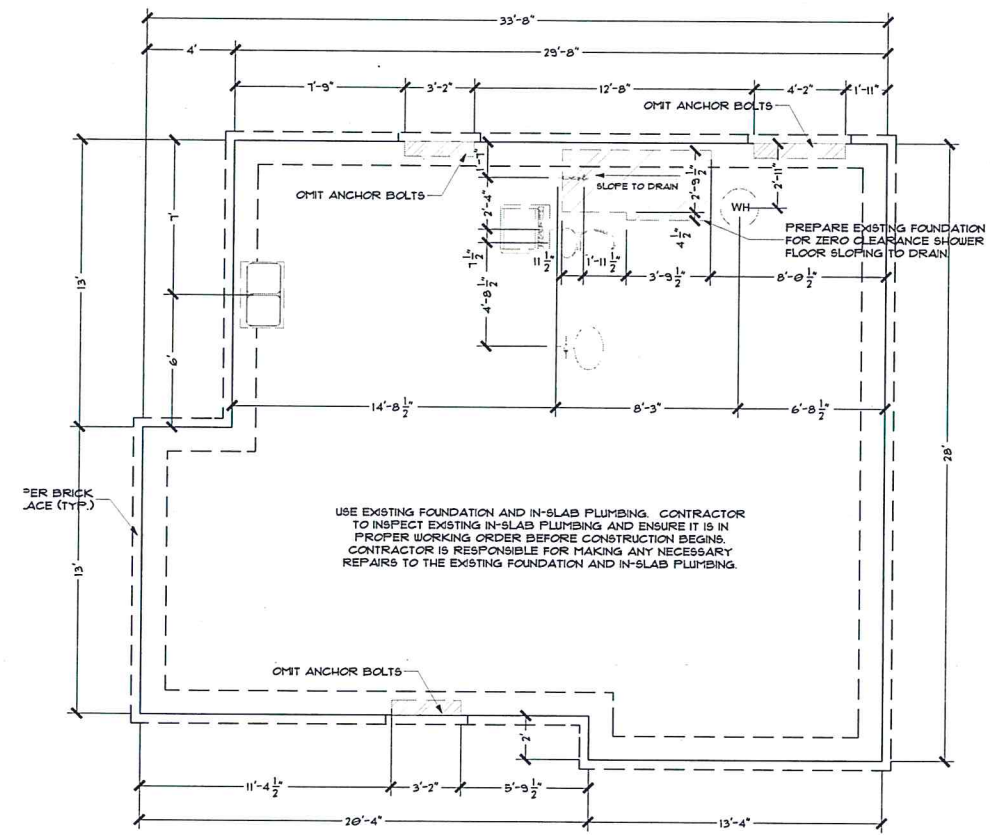
REAR ELEVATION

SCALE: 1/4" = 1'-0"



SIDE ELEVATION

SCALE: 1/4" = 1'-0"



CABINET SCHEDULE

NUMBER	QTY	ROOM NAME	WIDTH	DEPTH	HEIGHT	BOTTOM	DESCRIPTION
C01	1	CLOSET	24"	14"	36"	0"	UTILITY CABINET
C02	1	KITCHEN	36"	24"	34"	0"	BASE CABINET
C03	1	KITCHEN	18"	24"	34"	0"	BASE CABINET
C04	1	KITCHEN	30"	24"	36"	0"	BASE CABINET
C05	1	KITCHEN	12"	24"	34"	0"	BASE CABINET
C06	1	KITCHEN	32"	12"	42"	54"	WALL CABINET
C07	1	KITCHEN	42"	24"	22"	74"	WALL CABINET
C08	1	KITCHEN	32"	12"	24"	72"	WALL CABINET
C09	2	KITCHEN	28"	12"	42"	54"	WALL CABINET
C10	1	KITCHEN	18"	12"	42"	54"	WALL CABINET
C11	1	KITCHEN	30"	24"	60"	36"	WALL CABINET
C12	1	KITCHEN	12"	12"	42"	54"	WALL CABINET
C13	1	KITCHEN	48"	24"	96"	0"	PANTRY
C14	1	KITCHEN	36"	36"	34"	0"	CORNER BASE CABINET
C15	1	KITCHEN	24"	24"	42"	54"	CORNER WALL CABINET

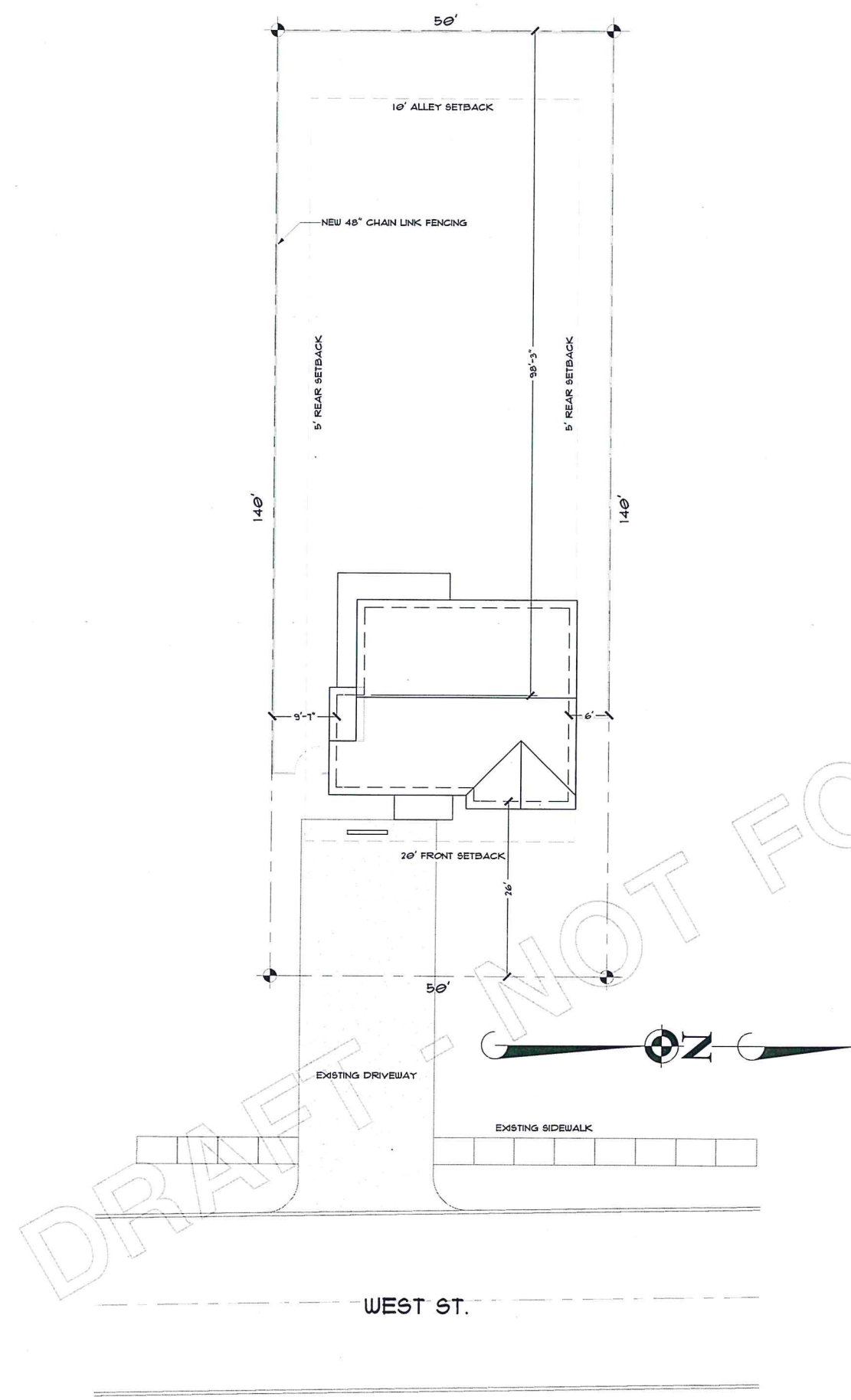
DOOR SCHEDULE

NUMBER	QTY	ROOM NAME	TYPE	SWING SIDE	EX/IN	SIZE	WIDTH	HEIGHT
D01	1	MECH	DOUBLE HINGED	CUT	EX	4068	48"	80"
D02	1	KITCHEN	HINGED	IN	EX	3068	36"	80"
D03	1	LIVING ROOM	HINGED	IN	EX	3068	36"	80"
D04	1	BATH #1/HALL	HINGED	IN	IN	3068	36"	80"
D05	1	MASTER BEDROOM/HALL	HINGED	IN	IN	3068	36"	80"

WINDOW SCHEDULE

NUMBER	QTY	ROOM NAME	TYPE	SIZE	WIDTH	HEIGHT	BOTTOM	EGRESS
W01	1	KITCHEN	SINGLE HUNG	3030SH	36"	36"	44"	
W02	1	DINING	SINGLE HUNG	3050SH	36"	60"	20"	
W03	2	LIVING ROOM	SINGLE HUNG	3050SH	36"	60"	20"	
W04	2	MASTER BEDROOM	SINGLE HUNG	3050SH	36"	60"	20"	YES

SCHEDULES

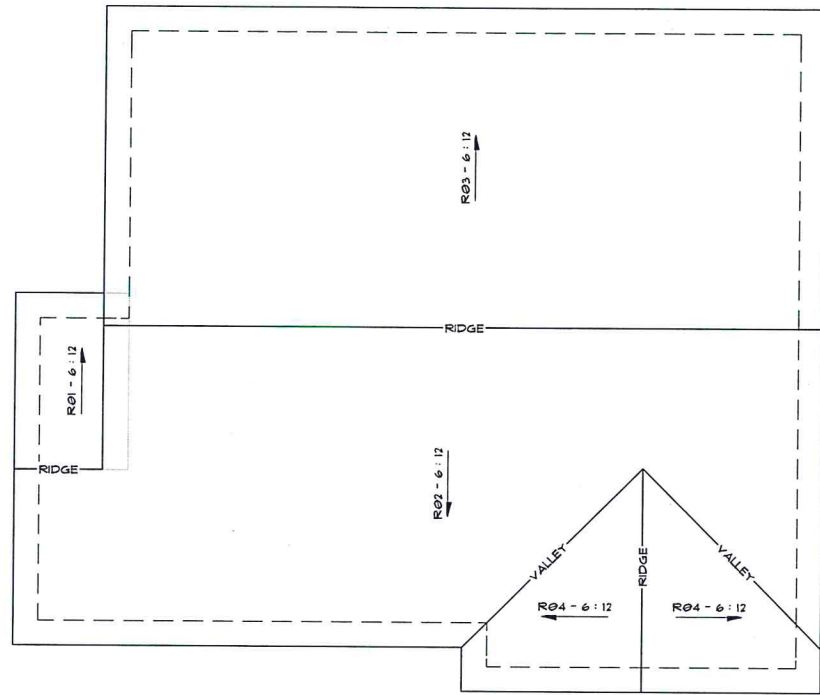


PLOT PLAN

SCALE: 1" = 10'-0"

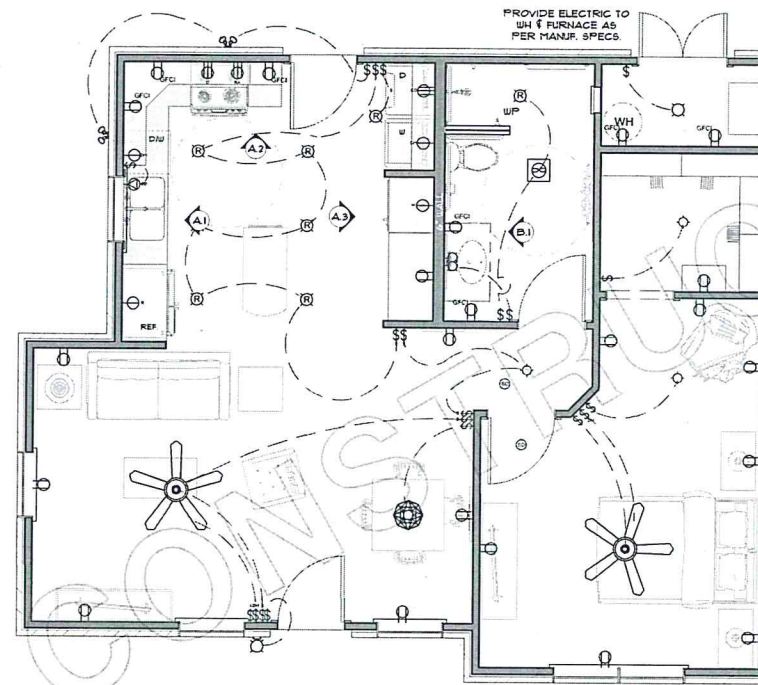


VICINITY MAP



ROOF LAYOUT PLAN

SCALE: 1/4" = 1'-0"



1ST FLOOR ELECTRICAL PLAN

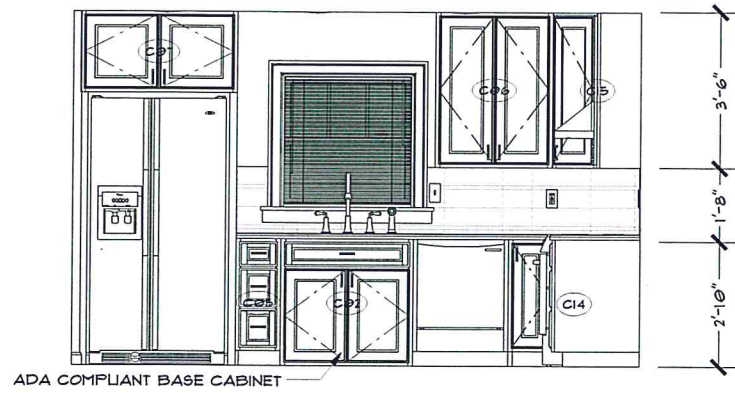
SCALE: 1/4" = 1'-0"

ROOF DATA:

ROOF DATA				
NUMBER	ROOF SURFACE	DESCRIPTION	PITCH	AREA, SURFACE (SQ FT)
R01	BLACK STANDING SEAM, OSB-HRZ	ROOF PLANE	6 : 12	45.13
R02	BLACK STANDING SEAM, OSB-HRZ	ROOF PLANE	6 : 12	490.14
R03	BLACK STANDING SEAM, OSB-HRZ	ROOF PLANE	6 : 12	529.58
R04	BLACK STANDING SEAM, OSB-HRZ	ROOF PLANE	6 : 12	55.54
TOTALS:				1111.3

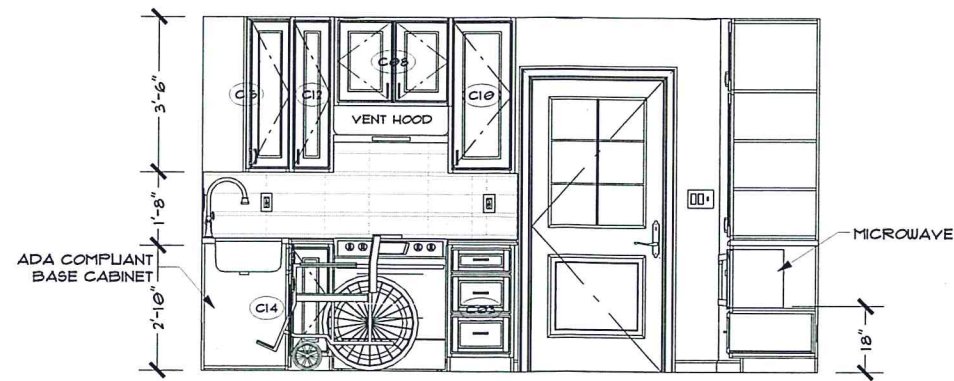
ROOF OVERHANG - 1'-6"

RIDGE VENTS WHERE APPLICABLE. POWERED ATTIC VENTS PER OWNER'S SPECS. GUTTER AND DOWNSPOUTS AS REQUIRED (TYP.)



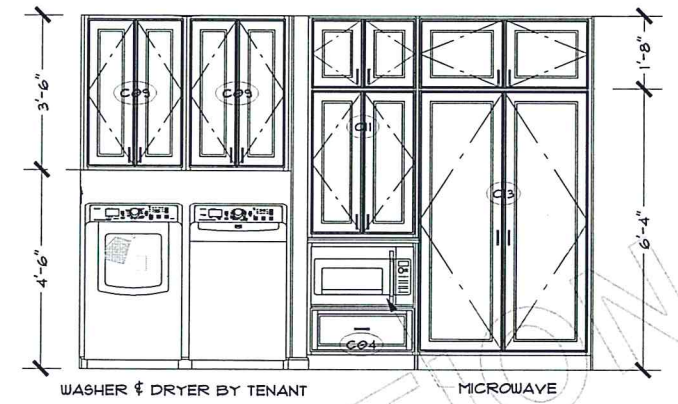
A.1 - INTERIOR ELEVATION

SCALE: 1/2" = 1'-0"



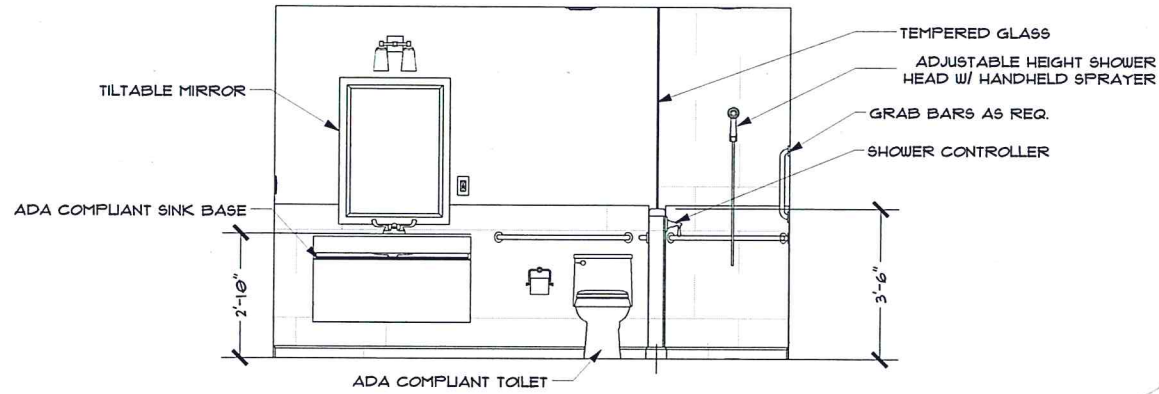
A.2 - INTERIOR ELEVATION

SCALE: 1/2" = 1'-0"



A.3 - INTERIOR ELEVATION

SCALE: 1/2" = 1'-0"



B.1 - INTERIOR ELEVATION

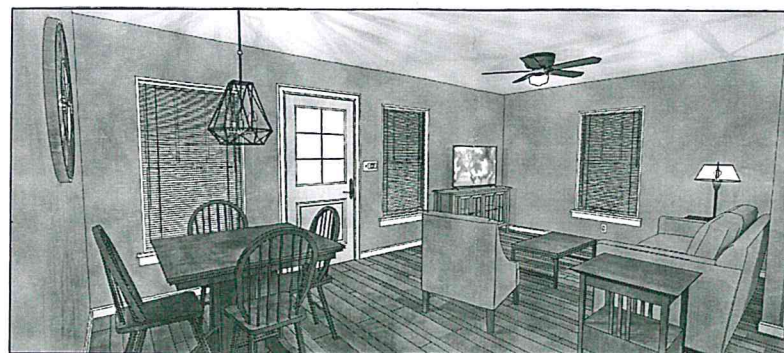
SCALE: 1/2" = 1'-0"



BATHROOM RENDERING



KITCHEN RENDERING



LIVING AREA RENDERING



BEDROOM RENDERING