

SHA Roxie Weber Boiler and Chiller Replacement - Prebid RFI's		
4/8/2025		
question number	question	response
1	Is it acceptable to use differential pressure across the chiller bundle to determine and maintain minimum flow instead of using the flow meter shown on the drawings?	Yes, this is acceptable so long as there are differential pressure sensors across both chiller bundles (in case one chiller is down for maintenance/repair)
2	What is the anticipated start date?	Procurement should begin shortly after the project is awarded, and construction can begin anytime thereafter.
3	Will this be a public bid opening?	Yes
4	<p>Is it acceptable to temporarily relocate the existing chilled pump in the mechanical room out of the way of the new construction and boilers and reconnect the piping to allow room for the new construction?</p> <p>If so, will the contractor be responsible for maintaining and servicing the chiller and pump?</p>	Yes, it is acceptable to temporarily relocate the existing chilled pump in the mechanical room out of the way of the new construction and boilers and reconnect the piping to allow room for the new construction. If this is performed, the contractor shall be responsible for ensuring the temporary system is up and running properly for a minimum of 48 hours. During the 48 hours, the contractor shall be responsible for fixing any issues that may have been caused by that relocation, but after the 48 hours SHA will be responsible for service and maintenance.
5	If the boiler provided requires AL29-4C boiler flue, does the boiler flue need to be double-wall.	Yes
6	What should the pressure relief valve on the boilers be rated for?	125 PSIG
7	For the fan-coil valve kits, should the balancing valves be automatic or manual orifice?	Manual orifice with test ports
8	Do you have more direction on the concrete pad requirements?	Yes, see attached document on the concrete pads to provide more guidance

9	If a fully condensing boiler is substituted for the basis of design boiler, can different flue material be used?	<p>Yes, if a condensing boiler is used the vent material may be substituted so long as it meets the manufacturer's requirements when the boiler is producing 180°F water and it is not PVC. If the manufacturer allows PVC and the contractor wishes to use plastic pipe for the flue, CPVC may be used.</p> <p>If a condensing boiler is used, the contractor must provide a condensate neutralization kit (one per boiler) for the boiler and flue condensate prior to discharging into a floor drain.</p>
10	May flexible couplings intended for use on base mounted pump discharges be used en lieu of the flexible connections called for on the drawings?	Yes, three (qty 3) victaulic style 177 flexible coupling may be used so long as they are installed per the manufacturers recommendations
11	May we have an extension on the bid due date?	Yes. The new bid deadline is 10am CST on April 16th, 2025. Any bids received after this time will be considered late and will not be considered.

Addendum #1 Narrative

Roxie Weber Plaza – Boiler and Chiller Replacement

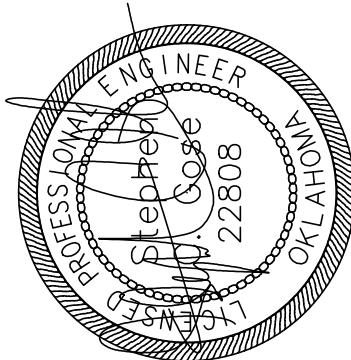
April 3, 2025

M-0 MECHANICAL NOTES:

1. Note added under bid notes to ensure building is kept between 65°F-85°F
2. Equipment substitution notes added
3. Test and balance notes added

M-5 MECHANICAL SCHEDULES:

1. Boiler schedule updated to show accurate leaving water temperature
2. Pump schedule updated to increase pump head



ENGINEERING PLANNING AND SERVICES
113 E. 8th Avenue Stillwater, OK 74074 PH (405) 743-4907 CA 1640
www.gose-associates.com

JOB NO: SD25 - 010

THIS DOCUMENT TOGETHER WITH THE CONCEPTS AND DESIGN PRESENTED HEREIN, AS AN INSTRUMENT OF SERVICE, IS INTENDED ONLY FOR THE SPECIFIC PURPOSE AND CLIENT FOR WHICH IT WAS PREPARED. REUSE OF AND IMPROPER RELIANCE ON THIS DOCUMENT WITHOUT WRITTEN AUTHORIZATION AND ADAPTATION BY GOSK & ASSOCIATES, SHALL BE WITHOUT LIABILITY TO GOSK & ASSOCIATES.