

11631571

BOOK PAGE
SEMINOLE COUNTY
FLORIDA

EXHIBIT A

LEGAL DESCRIPTION

A PART OF TRACT "B", THE HIGHLANDS SECTION TWO, AS RECORDED IN PLAT BOOK 17 AT PAGE 47 OF THE PUBLIC RECORDS OF SEMINOLE COUNTY, FLORIDA; BEING MORE PARTICULARLY DESCRIBED, AS FOLLOWS:

COMMENCE AT THE NORTHERNMOST CORNER OF SAID TRACT "B", THENCE RUN S 41° 30' W ALONG THE NORTHWESTERLY LINE OF SAID TRACT "B", 303.23 FEET TO A POINT ON THE NORTHWESTERLY RIGHT OF WAY LINE OF SHEDAH BOULEVARD AND THE POINT OF BEGINNING OF THE TRACT ABOUT TO BE DESCRIBED; THENCE RUN N 41° 30' 00" E, 385.74 FEET TO THE P.C. OF A CURVE CONCAVE SOUTHERLY; THENCE RUN NORTHEASTERLY AND SOUTHEASTERLY ALONG SAID CURVE, HAVING FOR ITS ELEMENTS, A RADIUS OF 181.40 FEET, AND A CENTRAL ANGLE OF 123° 00' 00", FOR AN ARC DISTANCE OF 389.42 FEET TO THE P.T. OF SAID CURVE; THENCE RUN S 15° 30' 00" E, 73.00 FEET TO THE P.C. OF A CURVE CONCAVE WESTERLY; THENCE RUN SOUTHERLY AND SOUTHWESTERLY ALONG SAID CURVE, HAVING FOR ITS ELEMENTS A RADIUS OF 259.31 FEET AND A CENTRAL ANGLE OF 83° 11' 44", FOR AN ARC DISTANCE OF 377.25 FEET TO THE P.T. OF SAID CURVE; THENCE RUN S 67° 41' 44" W, 314.14 FEET TO A POINT ON THE NORTHEASTERLY RIGHT OF WAY LINE OF SHEDAH BOULEVARD; THENCE RUN NORTHWESTERLY ALONG SAID RIGHT OF WAY LINE; AND ALONG A CURVE CONCAVE SOUTHWESTERLY, HAVING FOR ITS ELEMENTS A RADIUS OF 805.13 FEET AND A CENTRAL ANGLE OF 21° 03' 26" AND A CHORD BEARING OF N 26° 03' 31" W, FOR AN ARC DISTANCE OF 296.27 FEET TO THE P.C. OF A CURVE CONCAVE SOUTHWESTERLY; THENCE RUN NORTHWESTERLY ALONG SAID CURVE, HAVING FOR ITS ELEMENTS A RADIUS OF 434.78 FEET AND A CENTRAL ANGLE OF 02° 55' 57", FOR AN ARC DISTANCE OF 22.33 FEET TO THE POINT OF BEGINNING, SITUATED IN SEMINOLE COUNTY, FLORIDA.

The name of the Condominium Association is:

BAYTREE VILLAGE CONDOMINIUM, INC.

11631573

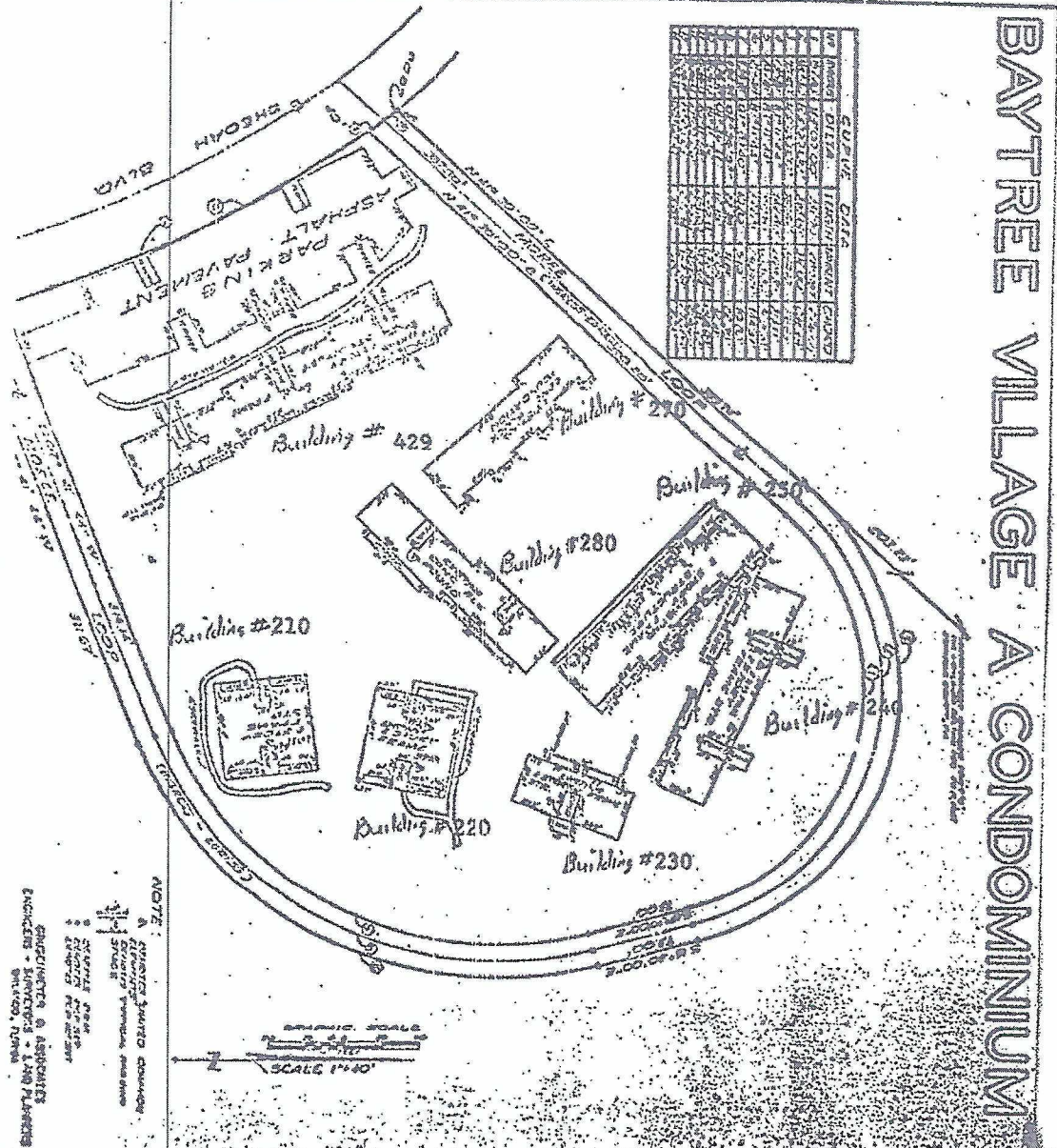
43

BOOK PAGE
SEMINOLE COUNTY
FLORIDA

2 of 2

EXHIBIT B

MEMO Legibility of writing, typing
or printing unsatisfactory in this document.



SCHEDULE DATA	
NO.	DESCRIPTION
1	CONCRETE
2	ASPHALT
3	GRAVEL
4	PAVEMENT
5	CONCRETE
6	ASPHALT
7	GRAVEL
8	PAVEMENT
9	CONCRETE
10	ASPHALT
11	GRAVEL
12	PAVEMENT
13	CONCRETE
14	ASPHALT
15	GRAVEL
16	PAVEMENT
17	CONCRETE
18	ASPHALT
19	GRAVEL
20	PAVEMENT
21	CONCRETE
22	ASPHALT
23	GRAVEL
24	PAVEMENT
25	CONCRETE
26	ASPHALT
27	GRAVEL
28	PAVEMENT
29	CONCRETE
30	ASPHALT
31	GRAVEL
32	PAVEMENT
33	CONCRETE
34	ASPHALT
35	GRAVEL
36	PAVEMENT
37	CONCRETE
38	ASPHALT
39	GRAVEL
40	PAVEMENT
41	CONCRETE
42	ASPHALT
43	GRAVEL
44	PAVEMENT
45	CONCRETE
46	ASPHALT
47	GRAVEL
48	PAVEMENT
49	CONCRETE
50	ASPHALT
51	GRAVEL
52	PAVEMENT
53	CONCRETE
54	ASPHALT
55	GRAVEL
56	PAVEMENT
57	CONCRETE
58	ASPHALT
59	GRAVEL
60	PAVEMENT
61	CONCRETE
62	ASPHALT
63	GRAVEL
64	PAVEMENT
65	CONCRETE
66	ASPHALT
67	GRAVEL
68	PAVEMENT
69	CONCRETE
70	ASPHALT
71	GRAVEL
72	PAVEMENT
73	CONCRETE
74	ASPHALT
75	GRAVEL
76	PAVEMENT
77	CONCRETE
78	ASPHALT
79	GRAVEL
80	PAVEMENT
81	CONCRETE
82	ASPHALT
83	GRAVEL
84	PAVEMENT
85	CONCRETE
86	ASPHALT
87	GRAVEL
88	PAVEMENT
89	CONCRETE
90	ASPHALT
91	GRAVEL
92	PAVEMENT
93	CONCRETE
94	ASPHALT
95	GRAVEL
96	PAVEMENT
97	CONCRETE
98	ASPHALT
99	GRAVEL
100	PAVEMENT

BAYTREE VILLAGE A CONDOMINIUM

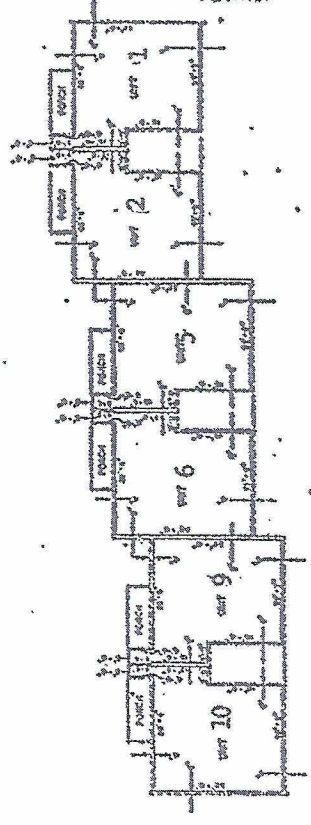
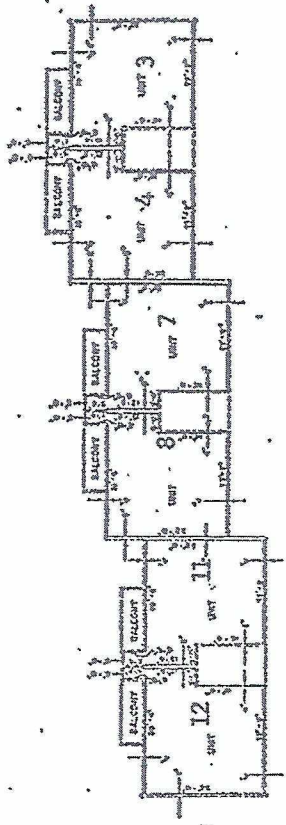
NOTE:
 1. ALL DIMENSIONS SHOWN ON THIS PLAN ARE TO FACE UNLESS OTHERWISE NOTED.
 2. ALL DIMENSIONS ARE TO FACE UNLESS OTHERWISE NOTED.
 3. ALL DIMENSIONS ARE TO FACE UNLESS OTHERWISE NOTED.
 4. ALL DIMENSIONS ARE TO FACE UNLESS OTHERWISE NOTED.
 5. ALL DIMENSIONS ARE TO FACE UNLESS OTHERWISE NOTED.
 6. ALL DIMENSIONS ARE TO FACE UNLESS OTHERWISE NOTED.
 7. ALL DIMENSIONS ARE TO FACE UNLESS OTHERWISE NOTED.
 8. ALL DIMENSIONS ARE TO FACE UNLESS OTHERWISE NOTED.
 9. ALL DIMENSIONS ARE TO FACE UNLESS OTHERWISE NOTED.
 10. ALL DIMENSIONS ARE TO FACE UNLESS OTHERWISE NOTED.
 11. ALL DIMENSIONS ARE TO FACE UNLESS OTHERWISE NOTED.
 12. ALL DIMENSIONS ARE TO FACE UNLESS OTHERWISE NOTED.
 13. ALL DIMENSIONS ARE TO FACE UNLESS OTHERWISE NOTED.
 14. ALL DIMENSIONS ARE TO FACE UNLESS OTHERWISE NOTED.
 15. ALL DIMENSIONS ARE TO FACE UNLESS OTHERWISE NOTED.
 16. ALL DIMENSIONS ARE TO FACE UNLESS OTHERWISE NOTED.
 17. ALL DIMENSIONS ARE TO FACE UNLESS OTHERWISE NOTED.
 18. ALL DIMENSIONS ARE TO FACE UNLESS OTHERWISE NOTED.
 19. ALL DIMENSIONS ARE TO FACE UNLESS OTHERWISE NOTED.
 20. ALL DIMENSIONS ARE TO FACE UNLESS OTHERWISE NOTED.
 21. ALL DIMENSIONS ARE TO FACE UNLESS OTHERWISE NOTED.
 22. ALL DIMENSIONS ARE TO FACE UNLESS OTHERWISE NOTED.
 23. ALL DIMENSIONS ARE TO FACE UNLESS OTHERWISE NOTED.
 24. ALL DIMENSIONS ARE TO FACE UNLESS OTHERWISE NOTED.
 25. ALL DIMENSIONS ARE TO FACE UNLESS OTHERWISE NOTED.
 26. ALL DIMENSIONS ARE TO FACE UNLESS OTHERWISE NOTED.
 27. ALL DIMENSIONS ARE TO FACE UNLESS OTHERWISE NOTED.
 28. ALL DIMENSIONS ARE TO FACE UNLESS OTHERWISE NOTED.
 29. ALL DIMENSIONS ARE TO FACE UNLESS OTHERWISE NOTED.
 30. ALL DIMENSIONS ARE TO FACE UNLESS OTHERWISE NOTED.
 31. ALL DIMENSIONS ARE TO FACE UNLESS OTHERWISE NOTED.
 32. ALL DIMENSIONS ARE TO FACE UNLESS OTHERWISE NOTED.
 33. ALL DIMENSIONS ARE TO FACE UNLESS OTHERWISE NOTED.
 34. ALL DIMENSIONS ARE TO FACE UNLESS OTHERWISE NOTED.
 35. ALL DIMENSIONS ARE TO FACE UNLESS OTHERWISE NOTED.
 36. ALL DIMENSIONS ARE TO FACE UNLESS OTHERWISE NOTED.
 37. ALL DIMENSIONS ARE TO FACE UNLESS OTHERWISE NOTED.
 38. ALL DIMENSIONS ARE TO FACE UNLESS OTHERWISE NOTED.
 39. ALL DIMENSIONS ARE TO FACE UNLESS OTHERWISE NOTED.
 40. ALL DIMENSIONS ARE TO FACE UNLESS OTHERWISE NOTED.
 41. ALL DIMENSIONS ARE TO FACE UNLESS OTHERWISE NOTED.
 42. ALL DIMENSIONS ARE TO FACE UNLESS OTHERWISE NOTED.
 43. ALL DIMENSIONS ARE TO FACE UNLESS OTHERWISE NOTED.
 44. ALL DIMENSIONS ARE TO FACE UNLESS OTHERWISE NOTED.
 45. ALL DIMENSIONS ARE TO FACE UNLESS OTHERWISE NOTED.
 46. ALL DIMENSIONS ARE TO FACE UNLESS OTHERWISE NOTED.
 47. ALL DIMENSIONS ARE TO FACE UNLESS OTHERWISE NOTED.
 48. ALL DIMENSIONS ARE TO FACE UNLESS OTHERWISE NOTED.
 49. ALL DIMENSIONS ARE TO FACE UNLESS OTHERWISE NOTED.
 50. ALL DIMENSIONS ARE TO FACE UNLESS OTHERWISE NOTED.
 51. ALL DIMENSIONS ARE TO FACE UNLESS OTHERWISE NOTED.
 52. ALL DIMENSIONS ARE TO FACE UNLESS OTHERWISE NOTED.
 53. ALL DIMENSIONS ARE TO FACE UNLESS OTHERWISE NOTED.
 54. ALL DIMENSIONS ARE TO FACE UNLESS OTHERWISE NOTED.
 55. ALL DIMENSIONS ARE TO FACE UNLESS OTHERWISE NOTED.
 56. ALL DIMENSIONS ARE TO FACE UNLESS OTHERWISE NOTED.
 57. ALL DIMENSIONS ARE TO FACE UNLESS OTHERWISE NOTED.
 58. ALL DIMENSIONS ARE TO FACE UNLESS OTHERWISE NOTED.
 59. ALL DIMENSIONS ARE TO FACE UNLESS OTHERWISE NOTED.
 60. ALL DIMENSIONS ARE TO FACE UNLESS OTHERWISE NOTED.
 61. ALL DIMENSIONS ARE TO FACE UNLESS OTHERWISE NOTED.
 62. ALL DIMENSIONS ARE TO FACE UNLESS OTHERWISE NOTED.
 63. ALL DIMENSIONS ARE TO FACE UNLESS OTHERWISE NOTED.
 64. ALL DIMENSIONS ARE TO FACE UNLESS OTHERWISE NOTED.
 65. ALL DIMENSIONS ARE TO FACE UNLESS OTHERWISE NOTED.
 66. ALL DIMENSIONS ARE TO FACE UNLESS OTHERWISE NOTED.
 67. ALL DIMENSIONS ARE TO FACE UNLESS OTHERWISE NOTED.
 68. ALL DIMENSIONS ARE TO FACE UNLESS OTHERWISE NOTED.
 69. ALL DIMENSIONS ARE TO FACE UNLESS OTHERWISE NOTED.
 70. ALL DIMENSIONS ARE TO FACE UNLESS OTHERWISE NOTED.
 71. ALL DIMENSIONS ARE TO FACE UNLESS OTHERWISE NOTED.
 72. ALL DIMENSIONS ARE TO FACE UNLESS OTHERWISE NOTED.
 73. ALL DIMENSIONS ARE TO FACE UNLESS OTHERWISE NOTED.
 74. ALL DIMENSIONS ARE TO FACE UNLESS OTHERWISE NOTED.
 75. ALL DIMENSIONS ARE TO FACE UNLESS OTHERWISE NOTED.
 76. ALL DIMENSIONS ARE TO FACE UNLESS OTHERWISE NOTED.
 77. ALL DIMENSIONS ARE TO FACE UNLESS OTHERWISE NOTED.
 78. ALL DIMENSIONS ARE TO FACE UNLESS OTHERWISE NOTED.
 79. ALL DIMENSIONS ARE TO FACE UNLESS OTHERWISE NOTED.
 80. ALL DIMENSIONS ARE TO FACE UNLESS OTHERWISE NOTED.
 81. ALL DIMENSIONS ARE TO FACE UNLESS OTHERWISE NOTED.
 82. ALL DIMENSIONS ARE TO FACE UNLESS OTHERWISE NOTED.
 83. ALL DIMENSIONS ARE TO FACE UNLESS OTHERWISE NOTED.
 84. ALL DIMENSIONS ARE TO FACE UNLESS OTHERWISE NOTED.
 85. ALL DIMENSIONS ARE TO FACE UNLESS OTHERWISE NOTED.
 86. ALL DIMENSIONS ARE TO FACE UNLESS OTHERWISE NOTED.
 87. ALL DIMENSIONS ARE TO FACE UNLESS OTHERWISE NOTED.
 88. ALL DIMENSIONS ARE TO FACE UNLESS OTHERWISE NOTED.
 89. ALL DIMENSIONS ARE TO FACE UNLESS OTHERWISE NOTED.
 90. ALL DIMENSIONS ARE TO FACE UNLESS OTHERWISE NOTED.
 91. ALL DIMENSIONS ARE TO FACE UNLESS OTHERWISE NOTED.
 92. ALL DIMENSIONS ARE TO FACE UNLESS OTHERWISE NOTED.
 93. ALL DIMENSIONS ARE TO FACE UNLESS OTHERWISE NOTED.
 94. ALL DIMENSIONS ARE TO FACE UNLESS OTHERWISE NOTED.
 95. ALL DIMENSIONS ARE TO FACE UNLESS OTHERWISE NOTED.
 96. ALL DIMENSIONS ARE TO FACE UNLESS OTHERWISE NOTED.
 97. ALL DIMENSIONS ARE TO FACE UNLESS OTHERWISE NOTED.
 98. ALL DIMENSIONS ARE TO FACE UNLESS OTHERWISE NOTED.
 99. ALL DIMENSIONS ARE TO FACE UNLESS OTHERWISE NOTED.
 100. ALL DIMENSIONS ARE TO FACE UNLESS OTHERWISE NOTED.

BOOK PAGE
SEMINOLS COUNTY
FLORIDA

SCHEDULE C

<u>Building No.</u>	<u>Unit No.</u>	<u>Street</u>	<u>Building No.</u>	<u>Unit No.</u>	<u>Street</u>
429	1	Sheoah Blvd.	230	7	Moree Loop
429	2	Sheoah Blvd.	240	1	Moree Loop
429	3	Sheoah Blvd.	240	2	Moree Loop
429	4	Sheoah Blvd.	240	3	Moree Loop
429	5	Sheoah Blvd.	240	4	Moree Loop
429	6	Sheoah Blvd.	240	5	Moree Loop
429	7	Sheoah Blvd.	240	6	Moree Loop
429	8	Sheoah Blvd.	240	7	Moree Loop
429	9	Sheoah Blvd.	240	8	Moree Loop
429	10	Sheoah Blvd.	250	1	Moree Loop
429	11	Sheoah Blvd.	250	2	Moree Loop
429	12	Sheoah Blvd.	250	3	Moree Loop
210	1	Moree Loop	250	4	Moree Loop
210	2	Moree Loop	250	5	Moree Loop
210	3	Moree Loop	250	6	Moree Loop
210	4	Moree Loop	250	7	Moree Loop
210	5	Moree Loop	250	8	Moree Loop
210	6	Moree Loop	270	1	Moree Loop
210	7	Moree Loop	270	2	Moree Loop
210	8	Moree Loop	270	3	Moree Loop
220	1	Moree Loop	270	4	Moree Loop
220	2	Moree Loop	270	5	Moree Loop
220	3	Moree Loop	270	6	Moree Loop
220	4	Moree Loop	270	7	Moree Loop
220	5	Moree Loop	270	8	Moree Loop
220	6	Moree Loop	280	1	Moree Loop
220	7	Moree Loop	280	2	Moree Loop
220	8	Moree Loop	280	3	Moree Loop
230	1	Moree Loop	280	4	Moree Loop
230	2	Moree Loop	280	5	Moree Loop
230	3	Moree Loop	280	6	Moree Loop

SHEET C OF 8 SHEETS
FLAT DOCK PAGE



SEE UNIT TYPE & FINISH SCHEDULES

SEE UNIT TYPE & FINISH SCHEDULES



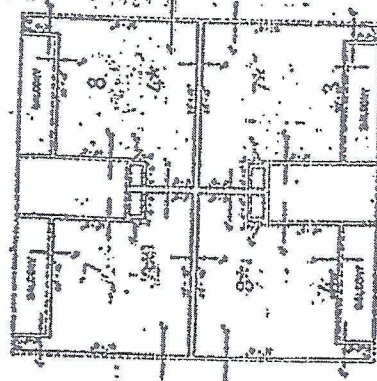
BUILDING NO. 429

SHEET 8 OF 10 SHEETS
PLAT BOOK PAGE

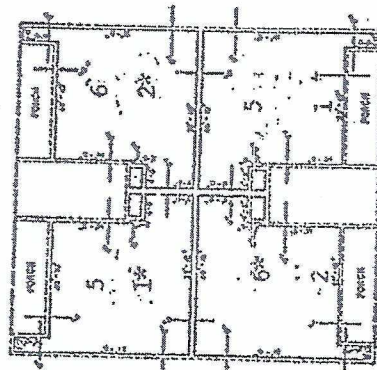
EXHIBIT C-2

1-18-34577-46

BOOK PAGE
SEMINOLE COUNTY
FLORIDA



SECOND FLOOR PLAN



FIRST FLOOR PLAN

BUILDING NO. 210, BUILDING NO. 220*



0dd

EXHIBIT C-3

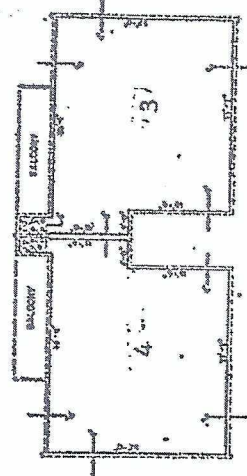
1631578-47

SHEET 2 OF 4 SHEETS
PLAT BOOK PAGE

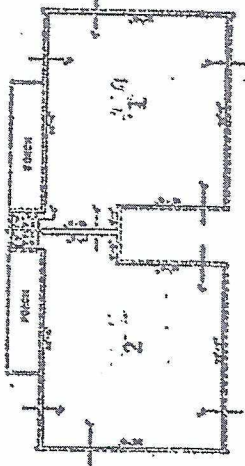
DESCRIPTION OF APARTMENT UNITS:
 APARTMENT UNITS SHALL BE CONSTRUCTED AS INDICATED BY THE ATTACHED FLOOR PLANS AND SHALL BE LOCATED IN THE BUILDING AS SHOWN ON THE ATTACHED FLOOR PLANS. ALL APARTMENT UNITS SHALL BE CONSTRUCTED IN ACCORDANCE WITH THE REQUIREMENTS OF THE FLORIDA BUILDING CODE, AS AMENDED, AND THE FLORIDA FIRE CODE, AS AMENDED, AND ALL OTHER APPLICABLE LAWS, ORDINANCES AND REGULATIONS. THE UNITS SHALL BE CONSTRUCTED IN ACCORDANCE WITH THE REQUIREMENTS OF THE FLORIDA BUILDING CODE, AS AMENDED, AND THE FLORIDA FIRE CODE, AS AMENDED, AND ALL OTHER APPLICABLE LAWS, ORDINANCES AND REGULATIONS. THE UNITS SHALL BE CONSTRUCTED IN ACCORDANCE WITH THE REQUIREMENTS OF THE FLORIDA BUILDING CODE, AS AMENDED, AND THE FLORIDA FIRE CODE, AS AMENDED, AND ALL OTHER APPLICABLE LAWS, ORDINANCES AND REGULATIONS.

NOTES:
 THESE FLOOR PLANS AND ELEVATIONS SHOW THE GENERAL LAYOUT OF THE UNITS AND ARE NOT TO BE CONSIDERED AS A CONTRACT DOCUMENT. THE CONTRACTOR SHALL BE RESPONSIBLE FOR OBTAINING ALL NECESSARY PERMITS AND APPROVALS FROM THE APPLICABLE AGENCIES. THE CONTRACTOR SHALL BE RESPONSIBLE FOR OBTAINING ALL NECESSARY PERMITS AND APPROVALS FROM THE APPLICABLE AGENCIES. THE CONTRACTOR SHALL BE RESPONSIBLE FOR OBTAINING ALL NECESSARY PERMITS AND APPROVALS FROM THE APPLICABLE AGENCIES.

BOOK PAGE
 MIHOLE COUNTY
 FLORIDA



APARTMENT TYPE 2
 FIRST FLOOR PLAN



APARTMENT TYPE 3
 FIRST FLOOR PLAN

BUILDING NO. 230

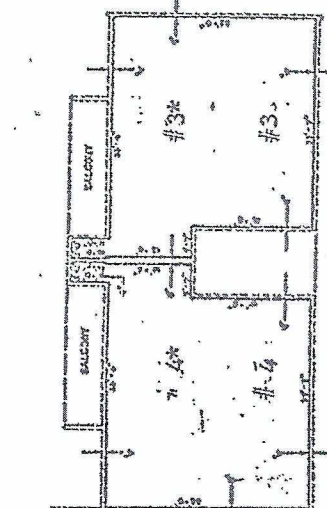
131/177 45

11631579

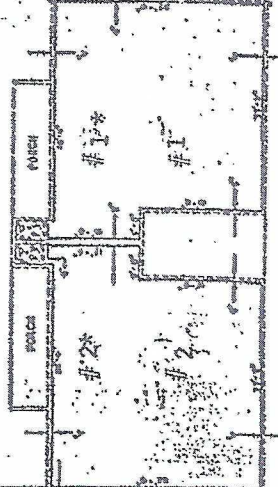
BOOK PAGE
SEMINOLE COUNTY
FLORIDA

EXHIBIT C-4

PLAY BOOK PAGE



SECOND FLOOR PLAN



FIRST FLOOR PLAN

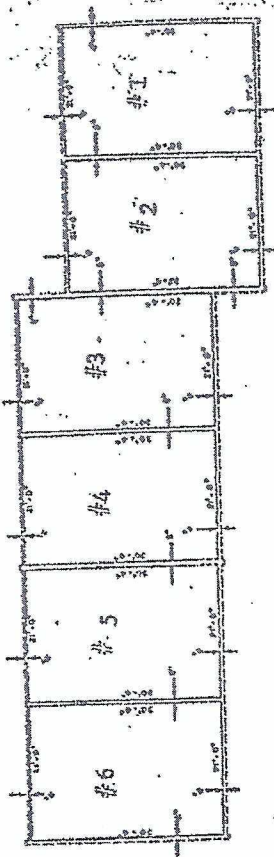
BUILDING NO. 240 & 280



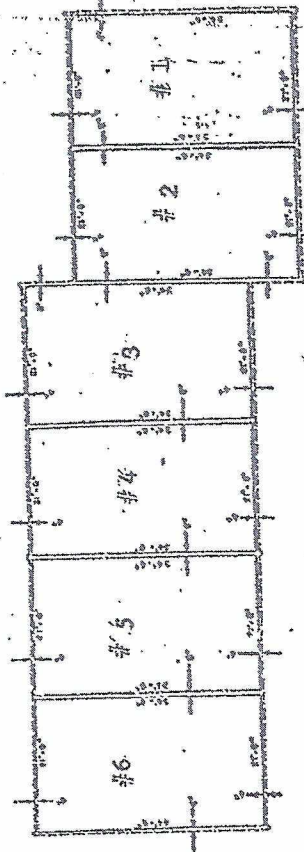
Handwritten text, likely bleed-through from the reverse side of the page, consisting of a vertical column of characters and symbols.

EXHIBIT C- 9086 PAGE
SEMINOLE COUNTY FLORIDA

PLAY BOCK



WALLS TYPE B
SECOND FLOOR FLOOR
UNSPECIFIED FLOOR FINISH
UNSPECIFIED CEILING FINISH



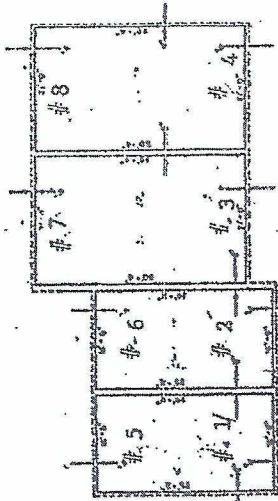
WALLS TYPE B
SECOND FLOOR FLOOR
UNSPECIFIED FLOOR FINISH
UNSPECIFIED CEILING FINISH



Building No. 270

FLAT DOOR PAGE

EXHIBIT C-6



SECTION TYPE B
SECOND FLOOR PLAN




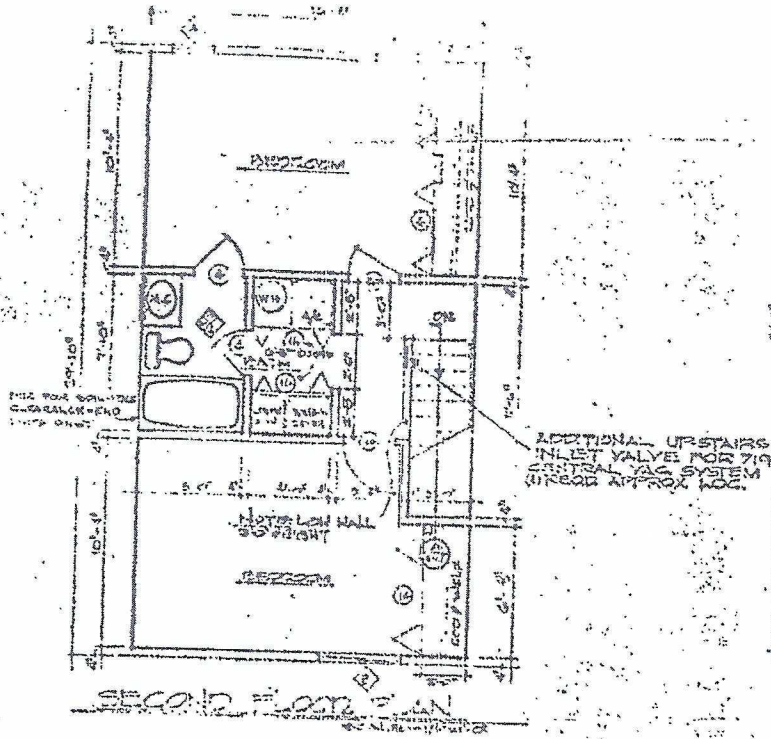
SECTION TYPE B
FIRST FLOOR PLAN

BUILDING NO. 250 (TWO OF THEM, BUILDING SIDE BY SIDE IS BUILDING NO. 65)



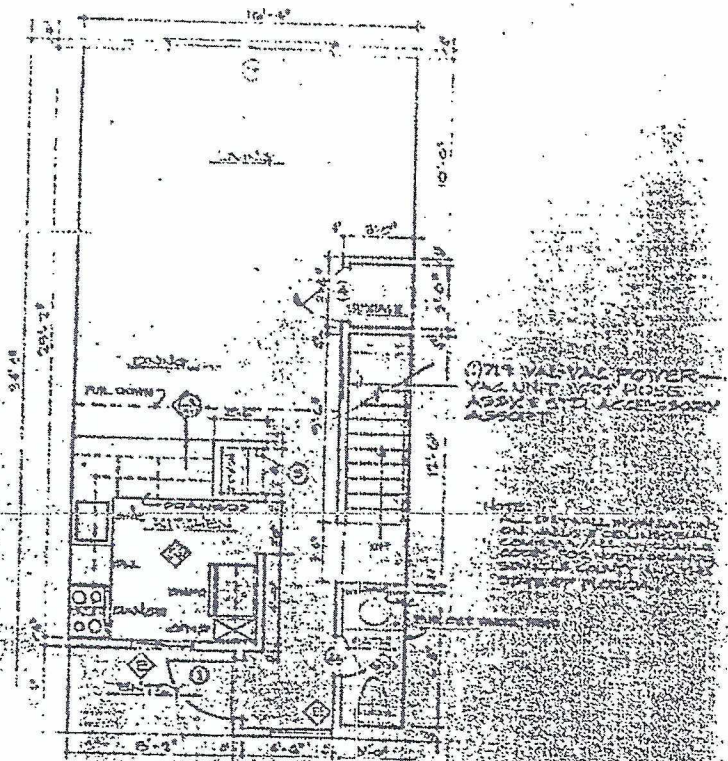
EXHIBIT D

LEGEND.  INDICATES INTERIOR ELEVATION DETAILS SHEET 1-13



MEMO Legibility of writing, typing or printing unsatisfactory in this document.

BOOK PAGE 1163 1582
SEMINOLE COUNTY FLORIDA

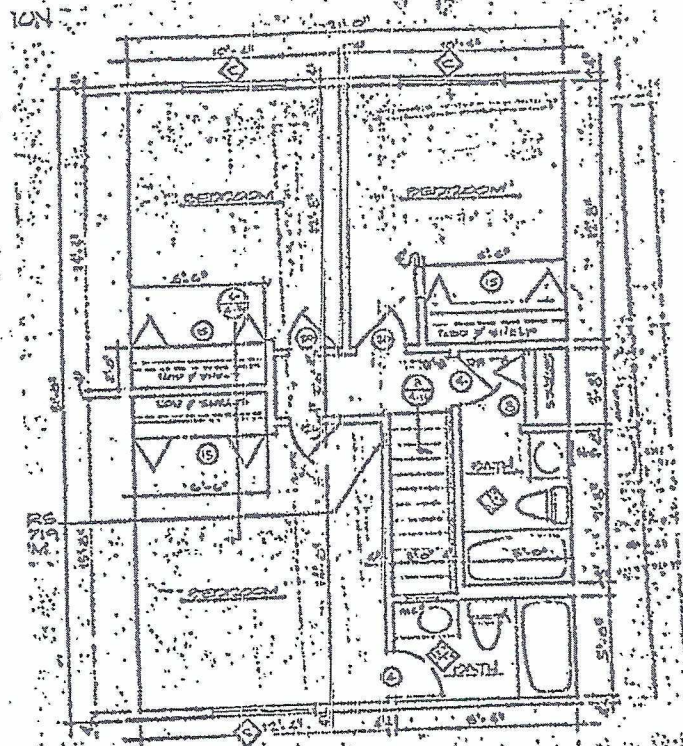


2. 2004 1/2 EAST TOWN HOUSE (TU) 2

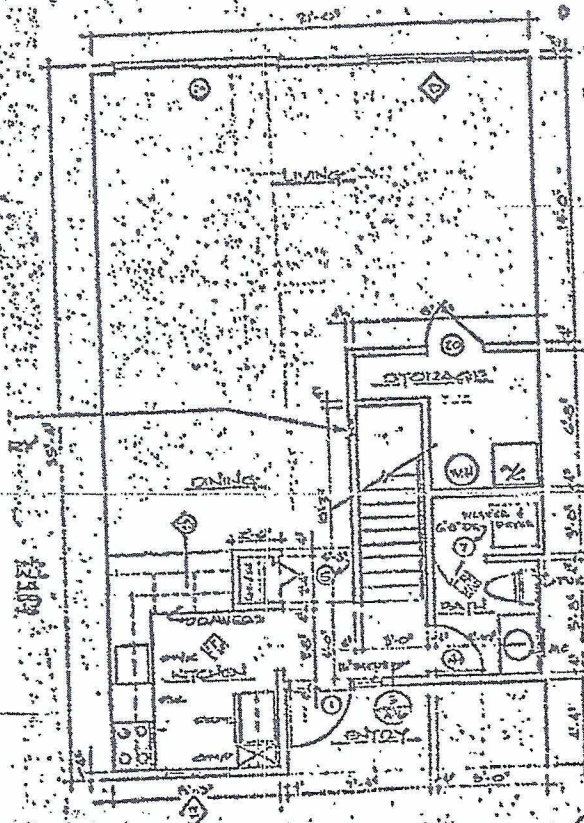
11631583

BOOK PAGE
SEMINOLE COUNTY
FLORIDA

EXHIBIT E

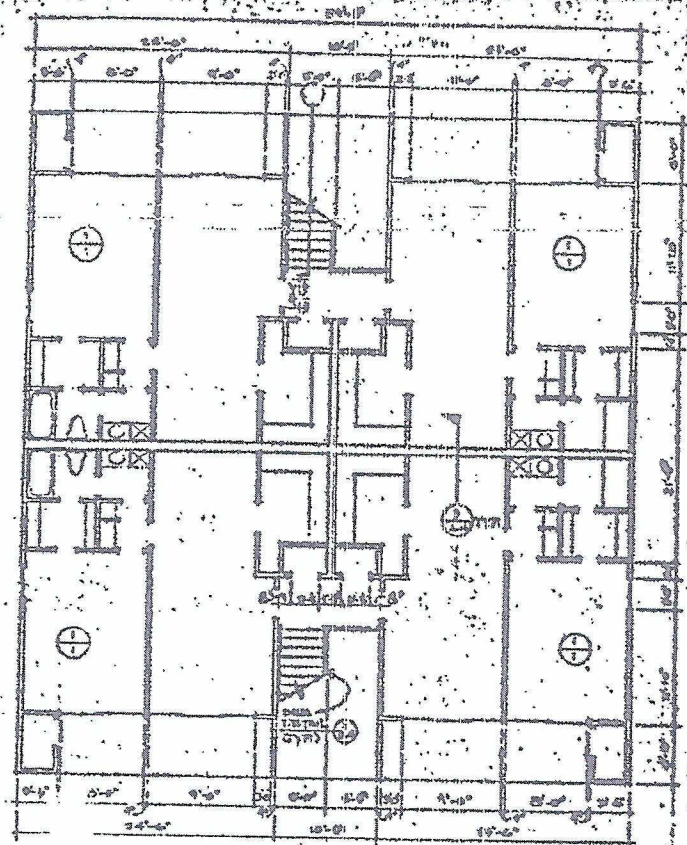


SECOND FLOOR PLAN

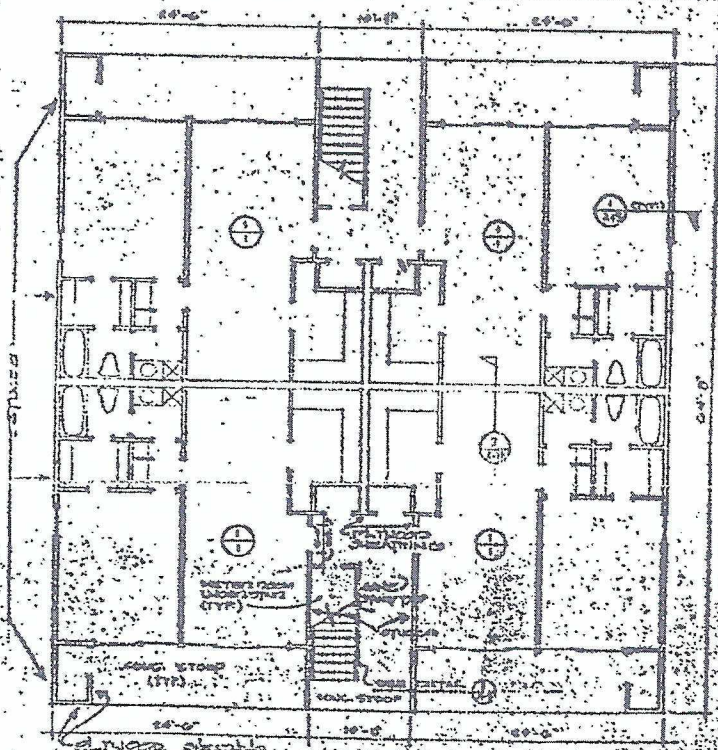


3 BEDROOM - 2 1/2 BATH TOWNHOUSE
FIRST FLOOR PLAN

TH
3



SECOND FLOOR PLAN SCALE: 1/8" = 1'-0"



GROUND FLOOR PLAN SCALE: 1/8" = 1'-0"

ONE BEDROOM APARTMENT

1-163-1585
 BOOK PAGE
 SEMI-COUNTY
 FLORIDA

11631586

BOOK PAGE
SEMINOLE COUNTY
FLORIDA

EXHIBIT H

Each Unit Owner shall own 1.612903225 of the Common
Area of the Condominium and each Unit Owner's responsibility
to the common expense is 1.612903225 .