

# 62nd Mid-States

# *Art Exhibition*



**EVANSVILLE MUSEUM**

ARTS | HISTORY | SCIENCE

---

# 62nd Mid-States *Art Exhibition*

December 14th, 2024 – March 23rd, 2025

Made possible through the generous support of the



# **Museum Purchase Award Donors**

## **Dorothea Schlechte Memorial Purchase Award**

Presented by John and Konnie Schlechte

## **Thelma Karges Memorial Purchase Award**

## **Caroline Karges Memorial Purchase Award**

## **Gail Cook Karges Memorial Purchase Award**

Presented by a Friend of the Museum

## **Jim and Ana Ward Memorial Purchase Award**

Presented by Margaret Dennis

## **Museum Members Purchase Award**

Presented by

Steve and Susan Worthington

Mary S. and David A. Bower

Les and JoAnne Miley

# **Museum Merit Award Donors**

## **Museum Members Merit Award**

Presented by Patricia Mitsos and

Mary S. and David A. Bower

# **Juror's Statement**

Regional exhibitions highlighting artistic talent, fostering community, and promoting exchange with the larger art world are essential as artists increasingly choose to practice peripheral to the art centers. Many curators, including myself, work to democratize access to the curatorial process and diversify art dialogues by engaging artists in communities and regions across the US. The opportunity to act as the juror for Evansville Museum's 62nd Mid-States Art Exhibition is a great pleasure and a form of research that exposes me to a new network of artists.

The artists selected express the diversity of medium, subject matter, and positionality in this expansive region. The paintings range from magical realism to unsettling landscapes, like Sarah Williams' hyper-realistic paintings of northern Missouri homes lit up from within during the hazy hours before dark, like an apparition from childhood frozen in time. Natalie Baldeon's paintings embody the psychological isolation experienced as a first-generation American and new parent. In greys and browns, Alexandra Sophia Franz's miniature paintings capture the banality of daily life with intoxicatingly loose brushstrokes. The drawings capture life on a micro and macro scale, such as Brigid O'Kane's microscopic networks and Laurin Notheisen's park landscapes. The prints take on a contemporary perspective of mythological scenes, like in Brett Anderson's Riddles of the Sphinx. The sculpture is architectural to absurd, like CJ Escobar Rodgers' abstract orange ceramic figure with a nose, ears, piercings, and feet topped with troll fur.

The talent abounds in the mid-states, and I am excited by what the region offers. My gratitude goes to Cheyenne Miller, curator of art, and the generous donors of the numerous artist awards. Supporting the arts is critical to building culture, which is central to humanity. Most of all, I'm grateful to the artists who offered me a glimpse into the thriving creativity of mid-America.

**Lauren R. O'Connell**

Curator of Contemporary Art

Scottsdale Museum of Contemporary Art

## About the Juror

**Lauren R. O'Connell** is a curator, writer, and educator focusing on contemporary art. O'Connell received her B.A. in Classics and Art History from the University of Arizona and her M.A. in Curatorial Practice from the California College of the Arts. She is currently the curator of contemporary art at Scottsdale Museum of Contemporary Art (SMoCA) in Arizona. O'Connell previously held positions at San Francisco Museum of Modern Art in the Architecture and Design Department and UC Berkeley Art Museum and Pacific Film Archive. Her curatorial practice is rooted in artist-centric projects that expand and challenge artistic medium, critical dialogue, relational experiences, and art historical canons. She has worked on special projects with artists including Tarek Atoui, Kristin Bauer, Diedrick Brackens, York Chang, Mimi O Chun, Martin Soto Climent, Otobong Nkanga, Kameelah Janan Rasheed, Jean Shin, Anna Tsouhlarakis, and Qiu Zhijie. O'Connell's research positions contemporary art as an avenue to examine social reality through epistemological examination, speculative and historical (re)formations, mythology, and constructed environments.



## Purchase Award Winners:



Sarah Williams, **Aster Drive**

Oil on panel, 18 x 30 inches

Springfield, MO



**Dorothea Schlechte Memorial Purchase Award**  
**Thelma Karges Memorial Purchase Award**  
**Caroline Karges Memorial Purchase Award**  
**Gail Cook Karges Memorial Purchase Award**  
**Museum Members Purchase Award**





Randy Simmons, **In Hindsight, He Never Had A Chance**  
Charcoal and white conté on paper, 36 x 48 inches  
Paducah, KY

**Jim and Ana Ward Memorial Purchase Award**



## Merit Award Winner:



CJ Escobar-Rodgers, **To Be A Billboard**

Paint on cone 6 ceramic, wood, cotton, aluminum

5.5 x 10 x 4 inches

South Bend, IN

**Museum Members Merit Award**

## Exhibition Checklist:



Dawn Adams, **Out There**  
Oil on canvas, 48 x 48 inches  
Bloomington, IN



Brett Anderson, **Riddles of the Sphinx**  
Color relief print, 22 x 30 inches  
Evansville, IN



Natalie Baldeón, **Reminders of Loss**  
 Watercolor on paper, 12 x 9 inches  
 Saint Louis, MO



Amber Barclay, **DNA**  
 Mixed media, 55 x 34 inches  
 Evansville, IN

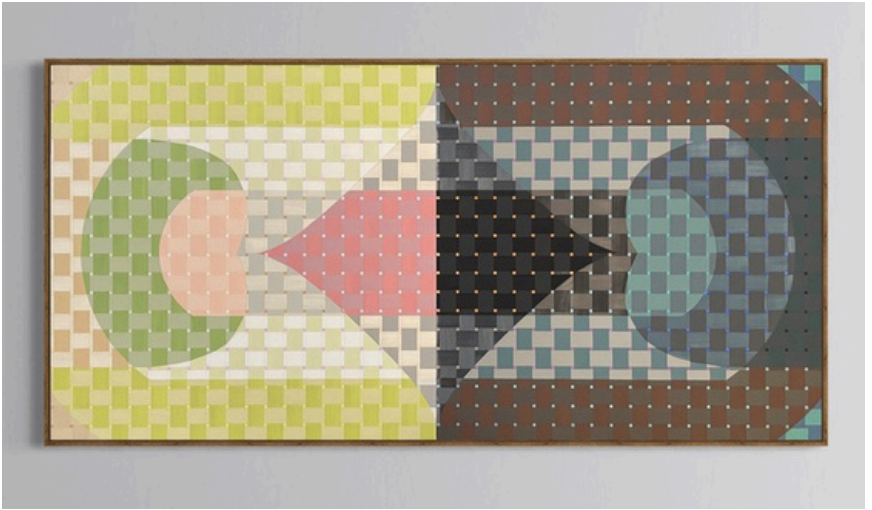


April Behnke, **Primary Play**  
 Flashe and acrylic on canvas, 20 x 20 inches  
 Chicago, IL

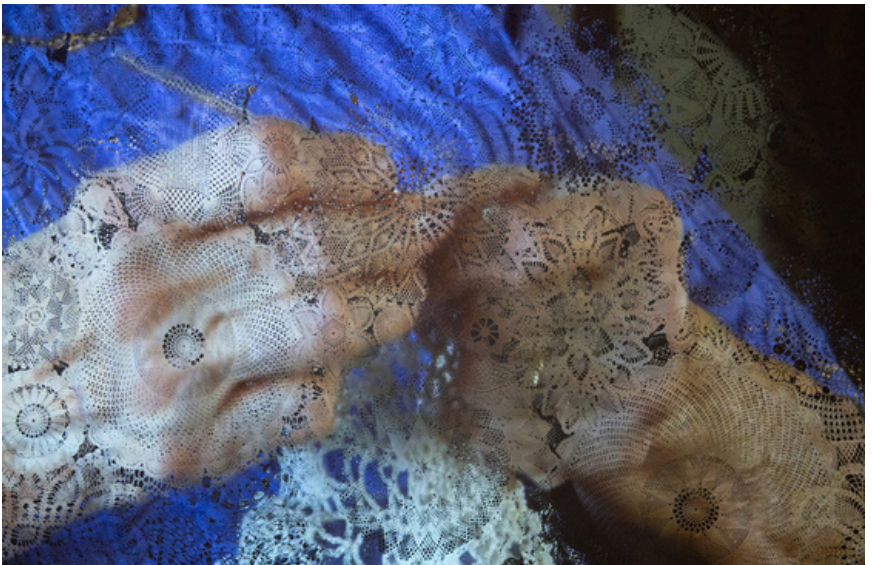


Greg Blair, **They Don't Want to Know About Climate Change #2**  
 Pine, glue, and mixed media, 10 x 18 inches  
 Evansville, IN





Sally Blair, **Untitled 12**  
 Oil on panel, 30 x 60 inches  
 Chicago, IL



Sara Christensen Blair, **Threads**  
 Doilies, video projection, paint, 54 x 96 inches  
 Evansville, IN



Bridgette Bogle, **Scrappy**

Mixed fabrics, polyfill, acrylic on canvas, 31 x 34 inches

Dayton, OH





Allyn Boley, **Morning coffee in fragments of place of memory**  
 Acrylic on canvas board, 24 x 20 inches  
 Bloomington, IN



Sally Brogden, **Untitled (LgKcLp)**  
 Porcelain, 5 x 23 x 7 inches  
 Knoxville, TN



Michael Bruner, **Mike do this. Mike do that. Mike don't do that.**  
 Pencil and powdered graphite on paper, 13.5 x 13.5 inches  
 Mascoutah, IL



Carmen Chami, **The Persistence of Memory when we just are able to forget.**  
 Oil on canvas, 32 x 70 inches  
 Wilmette, IL



Kyle Darnell, **Spiritual Death**  
Woodcut on fabric, 50 x 28 inches  
Evansville, IN





Kyle Darnell, **Ritual of the Witch**

Wood carving with acrylic paint and ink, 28 x 20 inches  
Evansville, IN



Austin Delano, **Entropy**

Wood, bronze, 36 x 14 x 14 inches  
Louisville, KY



Lindsey Dunnagan, **Reaching Sky**

Oil on panel, 36 x 27 inches

Kirksville, MO



Sarah Evans, **Play to Lose**

Ceramic, 17.5 x 7.5 x 15 inches

New Albany, IN



Alexandra Sophia Franz, **Perseus**

Oil on panel, 6 x 6 inches

Cincinnati, OH



Alexandra Sophia Franz, **Slop Sink Mirror (M1 Series)**

Oil on panel, 10 x 8 inches

Cincinnati, OH





Jennifer Halvorson, **Good Luck**

Blown and slumped glass, paper, flash drive, found object  
10 x 21 x 4.75 inches  
Noblesville, IN



Brian Harper, **Bunker Series: Compromised Lappi**

Ceramic, adhesive, 14 x 8 x 7 inches  
New Albany, IN



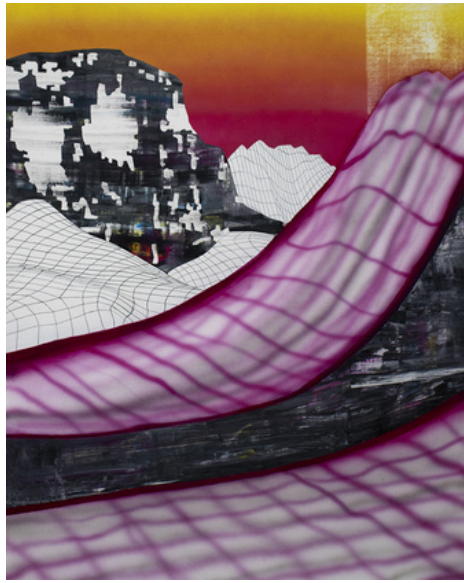
Michael W. High, **Behind the Mask**  
Ceramic with oxides, slips, stains, 28 x 18 x 16 inches  
Chardon, OH



Levi Justice, **Ascension**  
Oil on canvas, 60 x 48 inches  
Louisville, KY



Levi Justice, **Introspection**  
Oil on canvas, 60 x 48 inches  
Louisville, KY



Ruth Lantz, **Landscape**

Acrylic, graphite, and flashe on canvas over panel

35 x 28 inches

Urbana, IL



Erika Navarrete, **Ritual Firelight**

Oil on panel, 20 x 16 x 1.5 inches

Evansville, IN





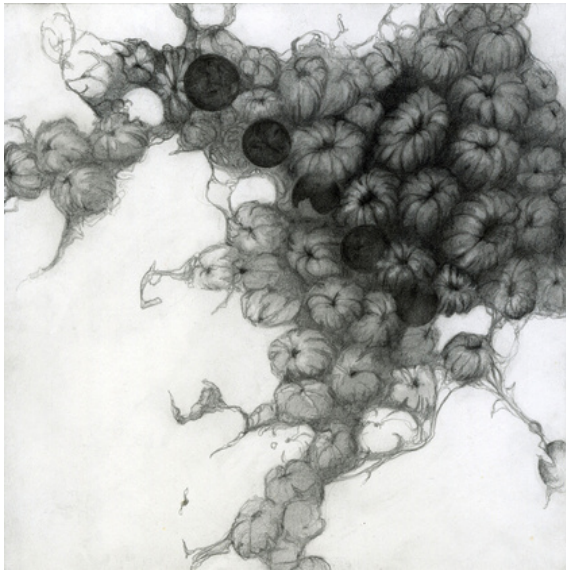
Michael Nichols, **Fragmentary Blue**

Airbrushed buon fresco on ceramic support, 18 x 18 inches  
Bowling Green, KY



Laurin Notheison, **In the Park #18**

Graphite pencil on paper, 16.25 x 23.25 inches  
Bowling Green, KY



Brigid O'Kane, **Social Construct 1**  
Graphite on paper, 6 x 6 inches  
Cincinnati, OH



Brigid O'Kane, **Social Construct 3**  
Graphite on paper, 6 x 6 inches  
Cincinnati, OH







Aaron Pickens, **Peer Review**

Oil on panel, 46 x 46 inches

Greentown, IN



Lilah Rogel, **Beyond**

Paint pen on paper, 28 x 22 inches

Evansville, IN



Jarrid Scott, **Oculus V - Strength**

Single-use plastic core, 41 x 26 x 6 inches

Dawson Springs, KY



Frieda Silva, **Come On In**

Gouache, watercolor pencil, ink on paper, 9.5 x 12.5 inches

St. Louis, MO



Jason Stout, **Fran the Titan, John the Titanic**  
Oil on canvas, 20 x 16 inches  
Martin, TN



Michelle Williams, **Carnival Queen**  
Glass beads, cotton, quartz crystal, dacron, feathers  
10 x 8 x 8 inches, Wilmette, IL





Michelle Williams, **Ready to Rock**

Glass beads, silk, cotton, quartz crystal, dacron, suede  
12 x 8 x 8 inches, Wilmette, IL



Sarah Williams, **Atom Road**

Oil on panel, 18 x 30 inches  
Springfield, MO



NATIONAL  
ENDOWMENT for the **ARTS**  

---

[arts.gov](http://arts.gov)



American  
Alliance of  
Museums