

Military Humvees Fully Customized for Fit Your Needs for Defense or Civilian Use to Obtain Full Protection or Luxury With Our Fully Restored Humvee Trucks

## BASIC HUMVEE RESTORATION \$35,000

The Basic Humvee is a simple restored truck with a full engine tune up with new batteries and filters with a full new paint job inside and out. These trucks are restored once again in new condition to add anything else you want.

## ARMORED HUMVEE \$155,000

The Armored Humvee is the crown jewel of our company, which is the reason why we started refurbishing these trucks. We can fully armor these trucks with 46100 armor on doors, plating, and turret, but can upgrade to Frag 5 or 6 armor.

## PLATINUM HUMVEE \$105,000

The Platinum Humvee is fully setup to be made for luxury and comfort with leather heated seating, electric roll up doors, GPS navigation screen, sound proof with insulated walls, surround sound system, and premium tires and paint.

## BAJA HUMVEE \$125,000

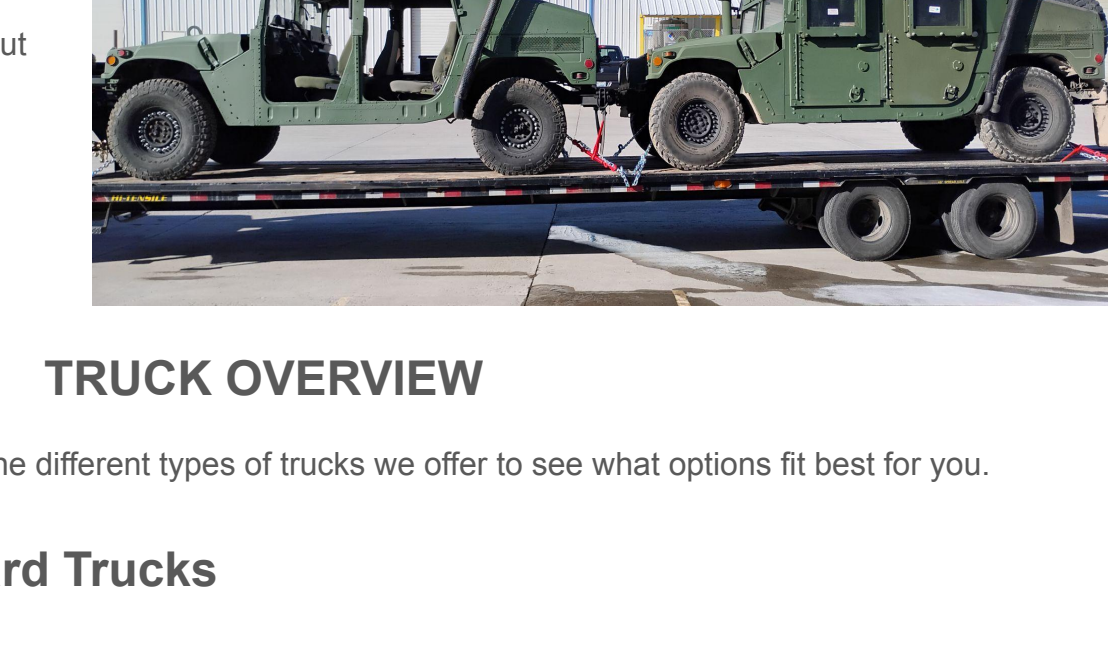
The Baja Humvee is fully outfitted to be ready for the harshest conditions off roading with harness seating, upgraded tires, additional roll cages, stereo system & loaded with a brand new LS1 Engine with more than enough power to go anywhere.

## CUSTOM OPTIONS AVAILABLE

All trucks can be custom built to your specs depending on what is needed for your fleet or for personal use. Additional charges will be applied for custom projects.

## INTERIOR FINISHES

All interior finishes can either be restored to its originality as a military version, or we we fully finish the interior with a luxurious interior for comfort and convenience.



## FULL SIZE TRUCKS

Our full size trucks are made to haul much larger loads and have as much off road capabilities as the traditional Humvees that we have.

## WORLDWIDE SHIPPING

We are based out of the United States, but ship worldwide. All trucks are either shipped in shipping containers or we can ship them in the open depending on the best rate to get to your country.



## TRUCK OVERVIEW

Below is a detailed overview of the different types of trucks we offer to see what options fit best for you.

## General Specs of Standard Trucks

### M1152 HMMWV TURBOCHARGED 6.5L DIESEL

Listed below is what we know about this

2006 Hmmwv Turbocharged 6.5 Diesel

- 4 speed
- 4 adults and 2 kids (bench seat with 2 seat belts)
- Fresh military authentic CARC (chemical resistant) paint on body inside and out of frame
- Fresh military authentic CARC (chemical resistant) paint on hubs front and rear
- Frontal gear hub
- New windshield and gaskets
- New Brake pads
- New A/C compressor
- New Radiator
- New belt tensioner
- New Hoses
- New air filter
- Ice cold ac
- Instant heat in the winter
- All fresh fluids and filters
- Runs smooth as butter with no leaks
- Looks and smells brand new

AM General Hmmwv specs

GVW M1152: 6,101 kg (13,450 lb.)

Grade Capability (at GCW)

40%

30%

Payload

M1152: 3,139 kg (6,920 lb.)

M1152: 2,962 kg (6,530 lb.)

Forward Load Allowance

1,905 kg (4,200 lb.)

Shipping Dimensions

21.58 cubic m (762 cubic ft.)

11.33 sq m (122 sq ft.)

4.93 m (194.0 in.) Length

2.31 m (91.0 in.) Width

1.91 m (75.0 in.) Height

Center of Gravity

66.61 cm (34.1 in.)

(at curb weight)

Above Ground 1.50 m (59.9 in.)

Rear of Centerline at Front Axle

Track Width 1.82 m (71.6 in.)

Wheelbase 3.30 m (130 in.)

Turning Radius 7.12 (22.0 ft.)

Ground Clearance 44.20 cm (17.4 in.)

Ramp Breakover Angle 25

Side Slope Capability (at GCW)

2-speed transfer case, ratios:

High - 1:1, low - 2:72:1

46.72 cm (18 in.)

Vertical Step

Cargo Bed Height (at GCW)

95.50 cm (37.6 in.)

Engine

General Engine Products (GEP) V8, 6.5L Turbocharged Diesel

Horsepower @ 3,400 RPM: 142KW (190HP)

Torque @ 1,700 RPM: 515 Nm (380 lb.-ft)

Transmission

General Transmission Products

(GTP) 4-Speed Automatic

Transfer Case

2 Speeds

Ratios: High - 1:1; Low - 2:72:1

Differentials

Front and Rear - Hypoid

Ratios 3.08:1

Frame

Steel Box Section

5 Crossmembers at Front Axle

Front Suspension

Independent Double

A-Frames, Coil Spring

Telescopic Shock Absorbers

Rear Suspension

Independent Double

A-Frames, Coil Spring

Rate - Variable

Telescopic Shock Absorbers

Gearred Hub

Ratios - 1.92:1

Service Brakes

Type: Disc - Front & Back

Dual Master Cylinder with Hydroboost

Rotor Size - 306.8 mm Dia.

24-mm Thick

Lining Area - 74.2 cm<sup>2</sup> (11.5 sq in.)

175.5 cm<sup>2</sup> (27.2 sq in.) Total

Parking Brakes

Dual Disc, Independent, Hand-Operated Lever Electrical System Dual Voltage 14V/28V

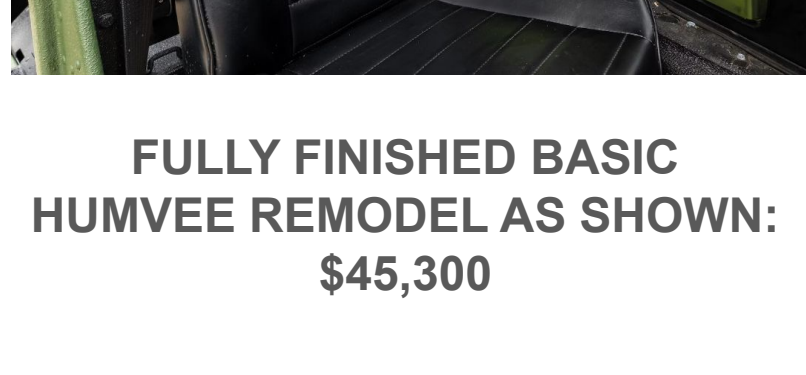
Fuel Capacity

95 L (25 gal.)

Deep Water Fording

0.76 m (25 in.)

1.52 m (50 in.) w/ Kit



## FULLY FINISHED BASIC HUMVEE REMODEL AS SHOWN: \$45,300

## General Specs of ARMORED HUMVEE

### M1152 HMMWV TURBOCHARGED 6.5L DIESEL

(Same Truck Specs as Standard Humvee Remodel)

USA, all configurations: 13,100 lb. (5,942 kg)

International, all configurations: 13,500 lb.

6,124 kg

PAYLOAD

USA

Standard A- and B-Kits: 1,850 lb (839 kg)

International

Standard A- and B-Kits: 2,250 lb. (1,023 kg)

POWERTRAIN

4-speed automatic transmission

2-speed transfer case, ratios:

High - 1:1, low - 2:72:1

Hypoid front & rear differentials; 3.08:1 ratio

V8, 6.5L turbocharged diesel engine

190 hp (142 kW) @ 3,400 rpm

380 lb.-ft (515 N-m) @ 1,700 rpm torque

25 gal (95 L) fuel capacity

ELECTRICAL

Dual Voltage 14V/28V

MOBILITY

Seating for four soldiers

Aggressive angles of approach, departure, and ramp breakerover

High climb capacity

Integrated deep water fording; increased capability with kit

STANDARD (W/A, AND B-KITS)

Enhanced armor in specific vehicle areas; adds plant- or field-installable perimeter protection

MIL-A-46100 Armor Steel Plate:

Material Type: High-hardness quenched and tempered alloy steel.

Standard: MIL-DTL-46100E (latest military specification).

Hardness: 47H-50H (Brinell Hardness).

Thickness Range: Typically 0.187" to 2.5" (4.75 mm to 63.5 mm).

Tensile Strength: Approximately 180,000 - 240,000 psi.

Applications: Military vehicles, armored personnel carriers, security installations.

Ballistic Resistance: Designed to stop small arms fire and shrapnel.

Weldability: Good, with proper preheat and post-weld heat treatment.

Machinability: Limited; requires specialized tools due to hardness.

Corrosion Resistance: Requires coating/paint for rust protection.



## FULLY FINISHED 46100 ARMORED HUMVEE AS SHOWN: \$155,000

## General Specs of PLATINUM HUMVEE

### M1152 HMMWV With 12 VALVE CUMMINS DIESEL

Custom full-body paint (matte or gloss finish options)

LED headlight and taillight upgrade

LED auxiliary-light bars (roof-mounted and bumper-mounted)

Hood scoop with functional airflow intake

17" or 20" alloy wheels (optional black or chrome finish)

Head scoops, hood-mounted shovel & pickaxe

ZESUPER winch, NAOEVO LED auxiliary lights, LED headlights

Side steps, custom HUMMER tailgate logo, locking fuel filler door

17" KMC alloy wheels with 36"x13.5" Nitto Trail Grappler MT tires

Interior Features:

Black leather bucket seats with diamond-pattern inserts

Kyocstar four-point harnesses, diamond plate flooring

Suspension & Brakes:

Aftermarket coil springs and rear A-arms

Armored-mount disc brakes, new rubber CV boots

Additional Upgrades:

Custom-fabricated roll cage and underbody guard

Replaced starter, alternator, voltage regulator, and radiator overflow tank

Flywheel and driveshaft replaced, minor diesel fluid leak noted

LS1 V8 Motor Upgrade for Humvee:

Engine Type: GM LS1 5.7L V8 - aluminum block for weight reduction.

Horsepower: Approximately 350-400 hp (varies with tuning).

Torque: Up to 365 lb-ft for improved off-road and towing capability.

Fuel System: Sequential fuel injection (SFI) for efficient combustion.

Cooling: Upgraded radiator and cooling fans recommended for heavy-duty use.

Transmission Compatibility: Mated to 4L80E or 4L80E automatic transmission.

Performance: Smoother acceleration, higher RPM range, and more power than stock diesel.

Weight Savings: Lighter than stock diesel engines, improving handling.

Reliability: Proven GM engine known for durability in off-road applications.



## FULLY FINISHED PLATINUM HUMVEE AS SHOWN: \$105,000

## BAJA HUMVEE

### M1152 HMMWV New LS1 V8 Motor

Transmission: 4-speed automatic with dual-range transfer case

Exterior Features:

Four-door custom with gray bedliner finish

Steel front & rear custom-fabricated bumpers

Head scoops, hood-mounted shovel & pickaxe

ZESUPER winch, NAOEVO LED auxiliary lights, LED headlights

Side steps, custom HUMMER tailgate logo, locking fuel filler door

17" KMC alloy wheels with 36"x13.5" Nitto Trail Grappler MT tires

Interior Features:

Black leather bucket seats with diamond-pattern inserts

Kyocstar four-point harnesses, diamond plate flooring

Suspension & Brakes:

Aftermarket coil springs and rear A-arms

Armored-mount disc brakes, new rubber CV boots

Additional Upgrades:

Custom-fabricated roll cage and underbody guard

Replaced starter, alternator, voltage regulator, and radiator overflow tank

Flywheel and driveshaft replaced, minor diesel fluid leak noted

LS1 V8 Motor Upgrade for Humvee:

Engine Type: GM LS1 5.7L V8 - aluminum block for weight reduction.

Horsepower: Approximately 350-400 hp (varies with tuning).

Torque: Up to 365 lb-ft for improved off-road and towing capability.

Fuel System: Sequential fuel injection (SFI) for efficient combustion.

Cooling: Upgraded radiator and cooling fans recommended for heavy-duty use.

Transmission Compatibility: Mated to 4L80E or 4L80E automatic transmission.

Performance: Smoother acceleration, higher RPM range, and more power than stock diesel.

Weight Savings: Lighter than stock diesel engines, improving handling.

Reliability: Proven GM engine known for durability in off-road applications.



## FULLY FINISHED BAJA HUMVEE AS SHOWN: \$125,000

## CONTACT US FOR A QUOTE

WhatsApp: <https://wa.me/13855618166>

Telegram: @MTRCGLOBAL

Phone: 1-385-561-8166

mtrcglobalus@gmail.com

675 N 600 W #5

Logan, UT 84321

