

CITY OF HARTFORD — PARK COMMISSION

# POPE PARK

GENERAL PLAN



CITY OF HARTFORD  
BANKSIDE GROVE & POPE PARK NORTH





## TONIGHT'S AGENDA

1. historic development
2. existing conditions & assessment
  - park use
  - circulation
  - vegetation & views
  - topography & drainage
  - amenities
3. conceptual plans
4. discussion
5. next steps





tactical urbanism



passive park planning



stormwater solutions



historic preservation



low impact design



sustainability



urban parks



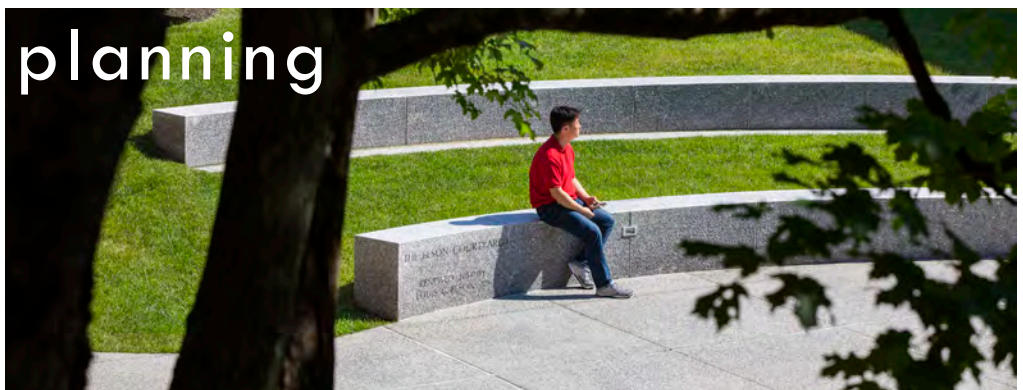
mixed-use development



urban forest management



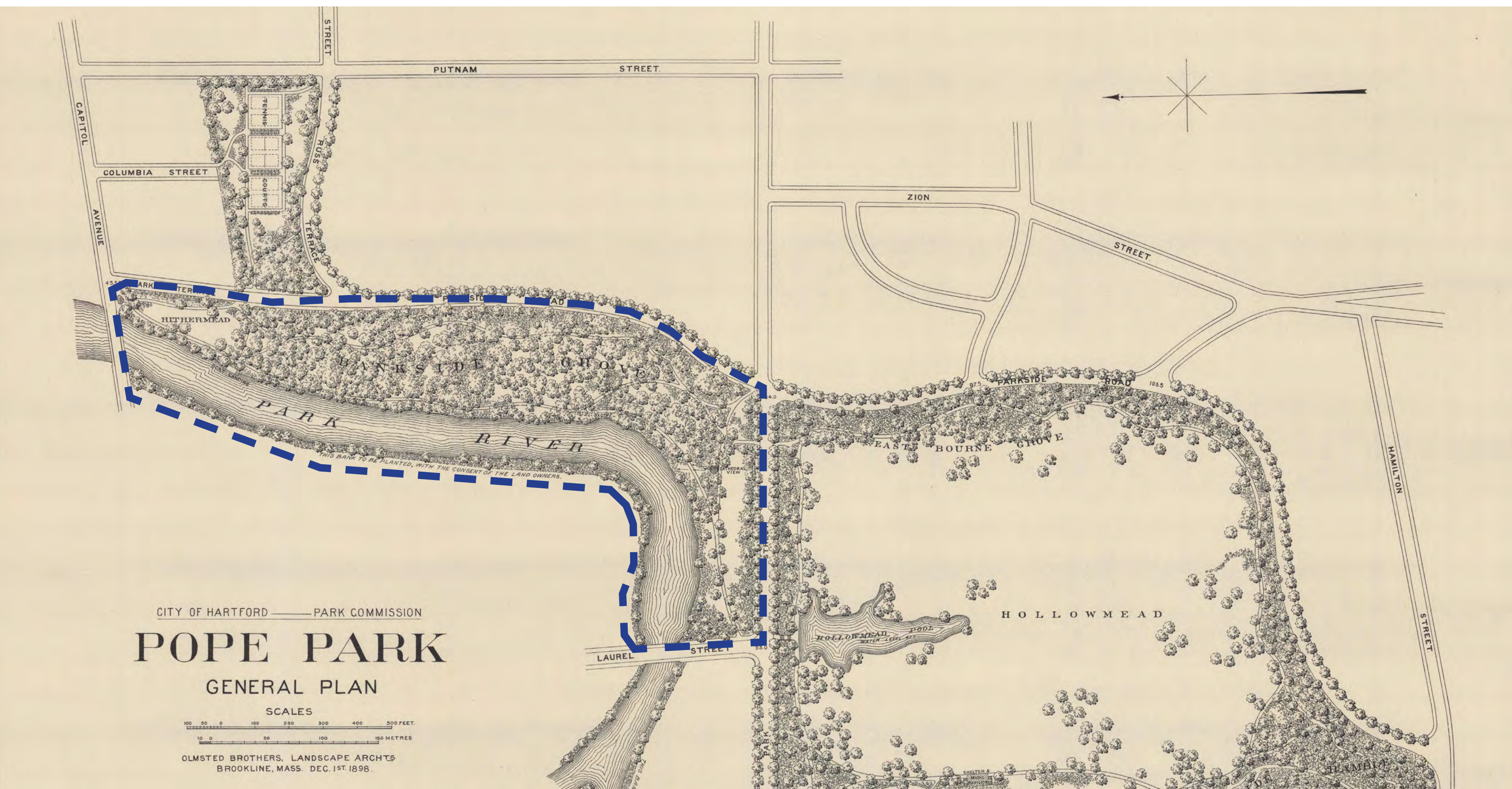
campus



planning

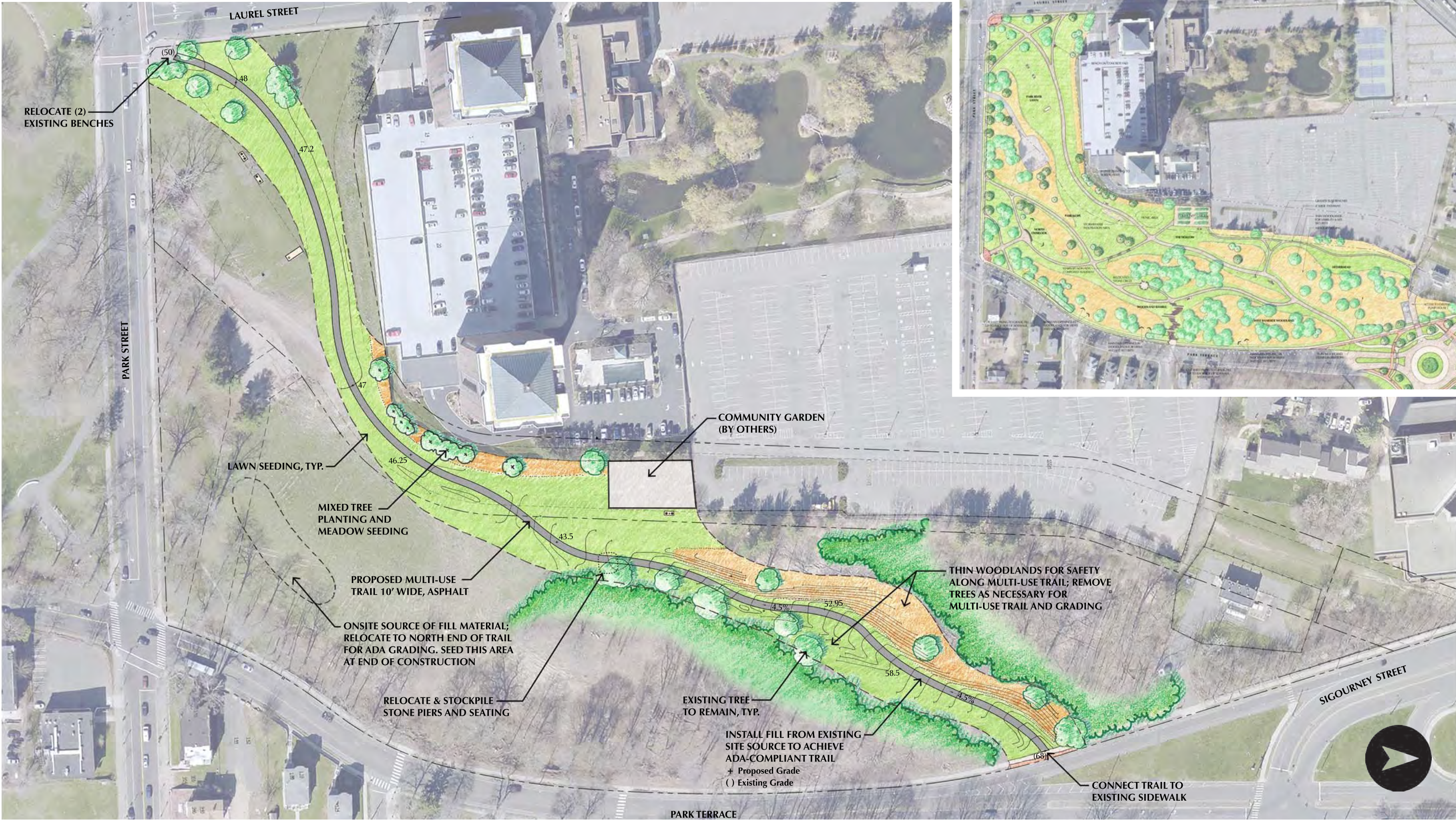


OLMSTED BROTHERS PLAN, 1898

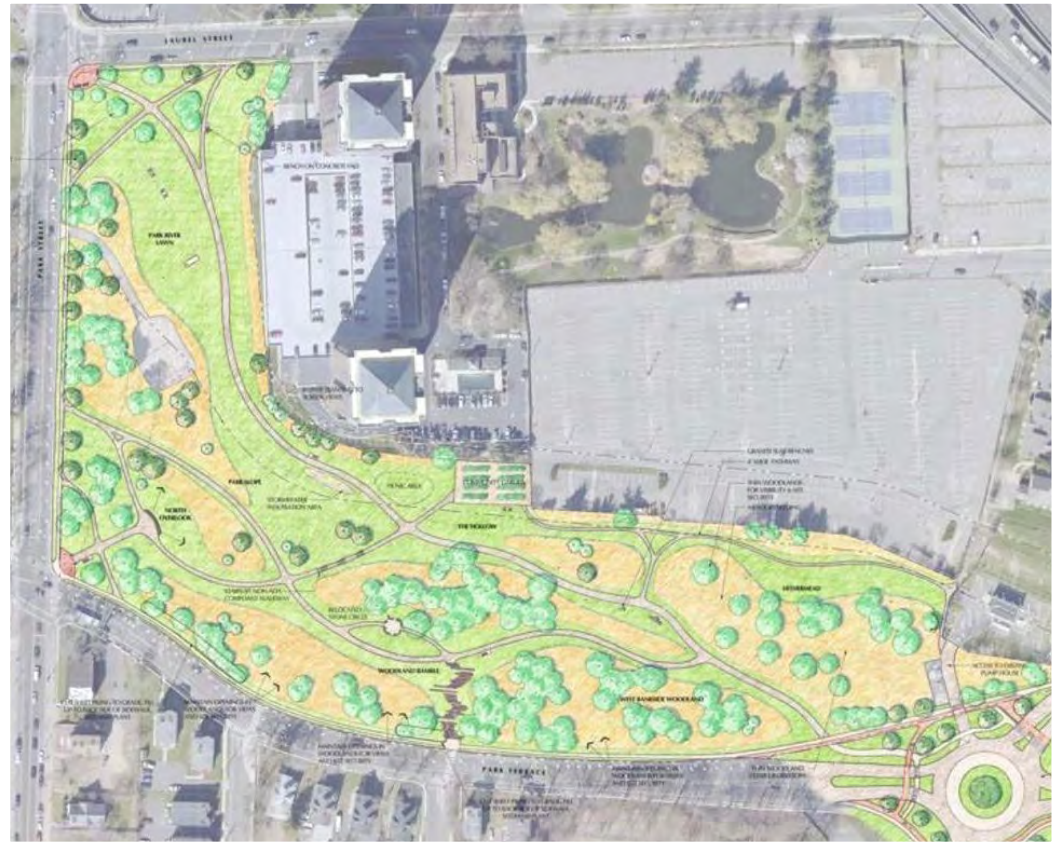




# 2018 GREENWAY TRAIL PLAN



## 2017 MASTER PLAN FOR BANKSIDE GROVE



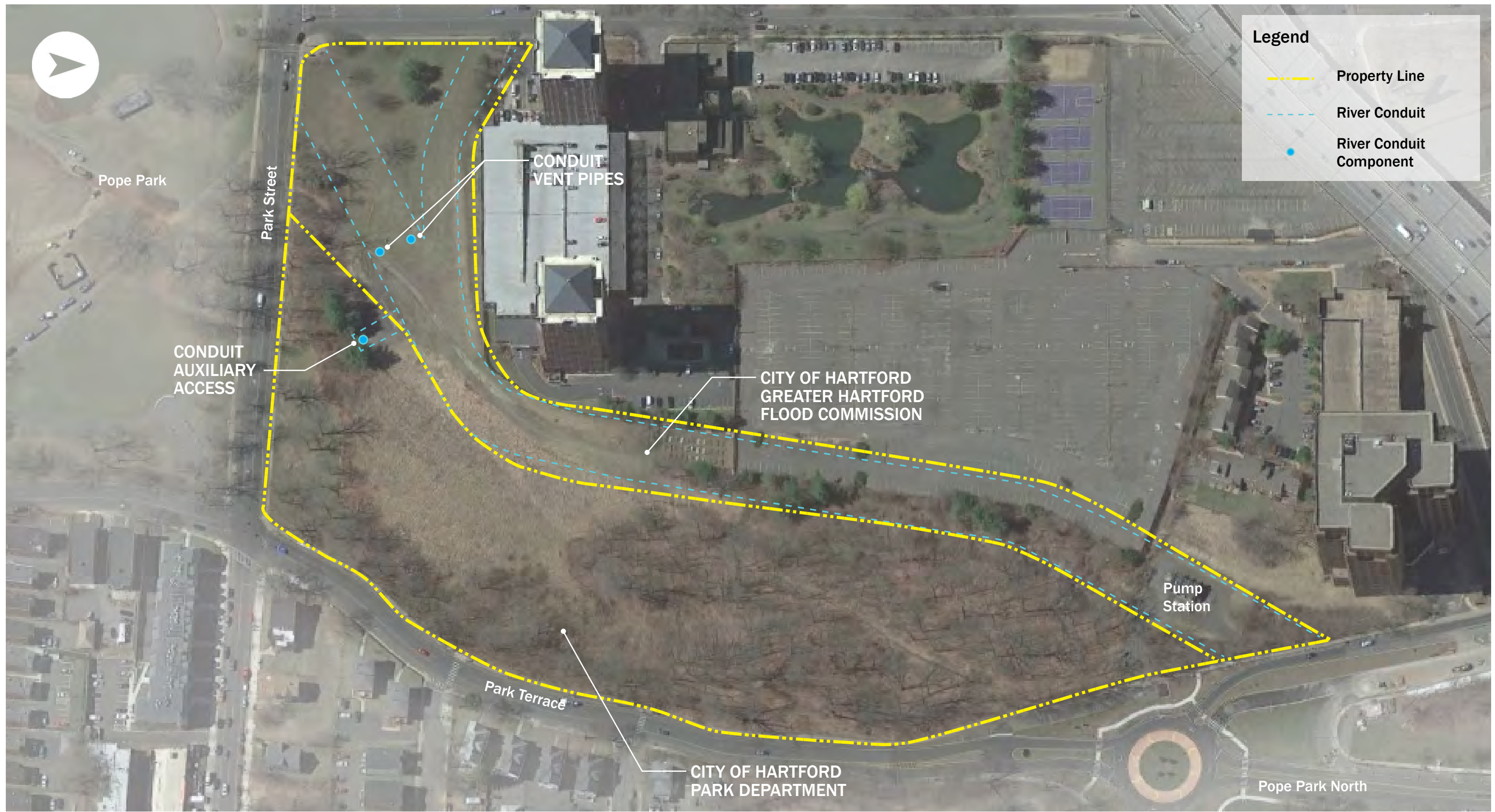
CITY OF HARTFORD  
**BANKSIDE GROVE**

CONCEPTUAL DESIGN  
OCTOBER 3, 2022





# EXISTING CONDITIONS

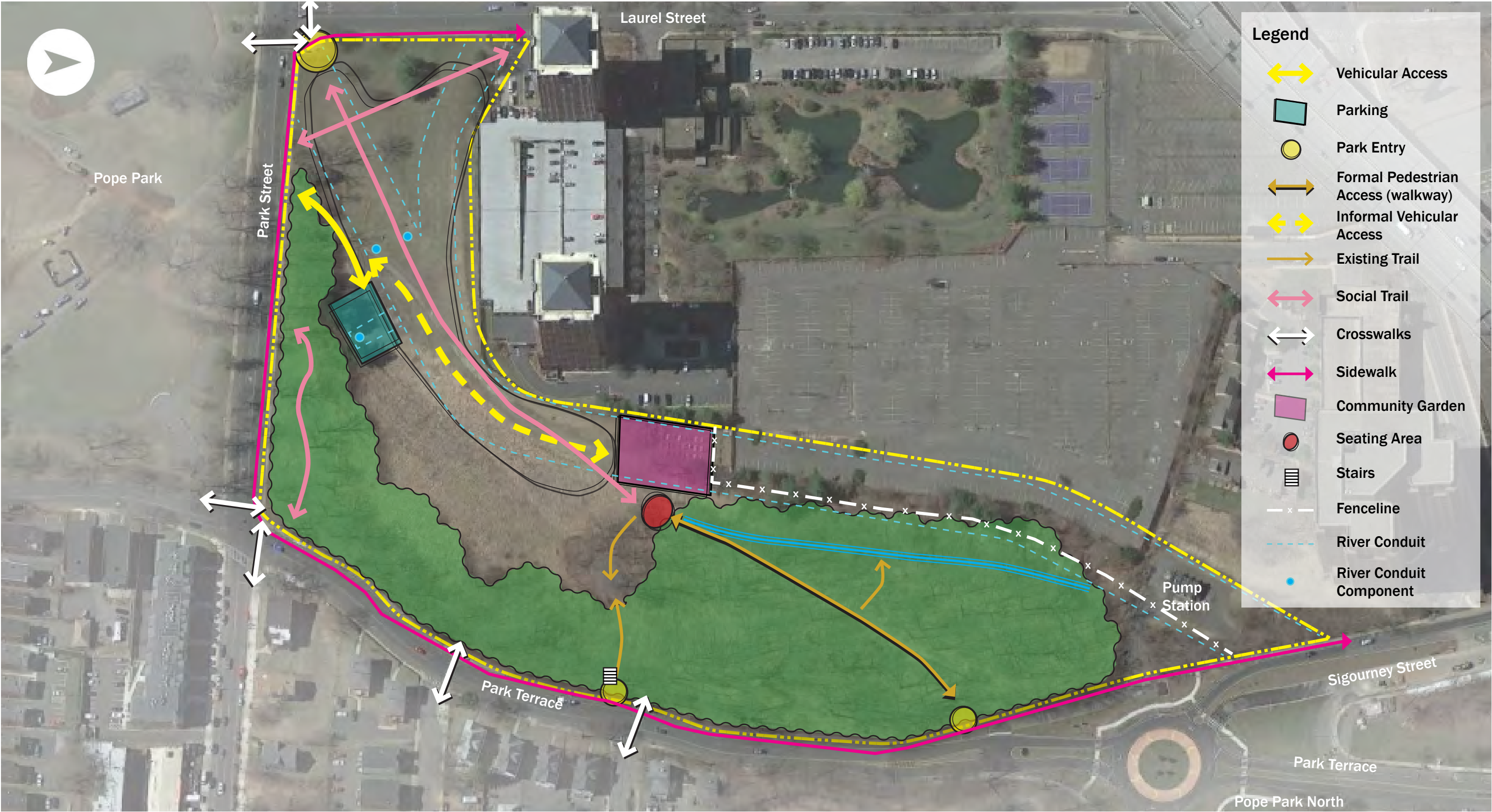


# EXISTING CONDITIONS: PARK USE



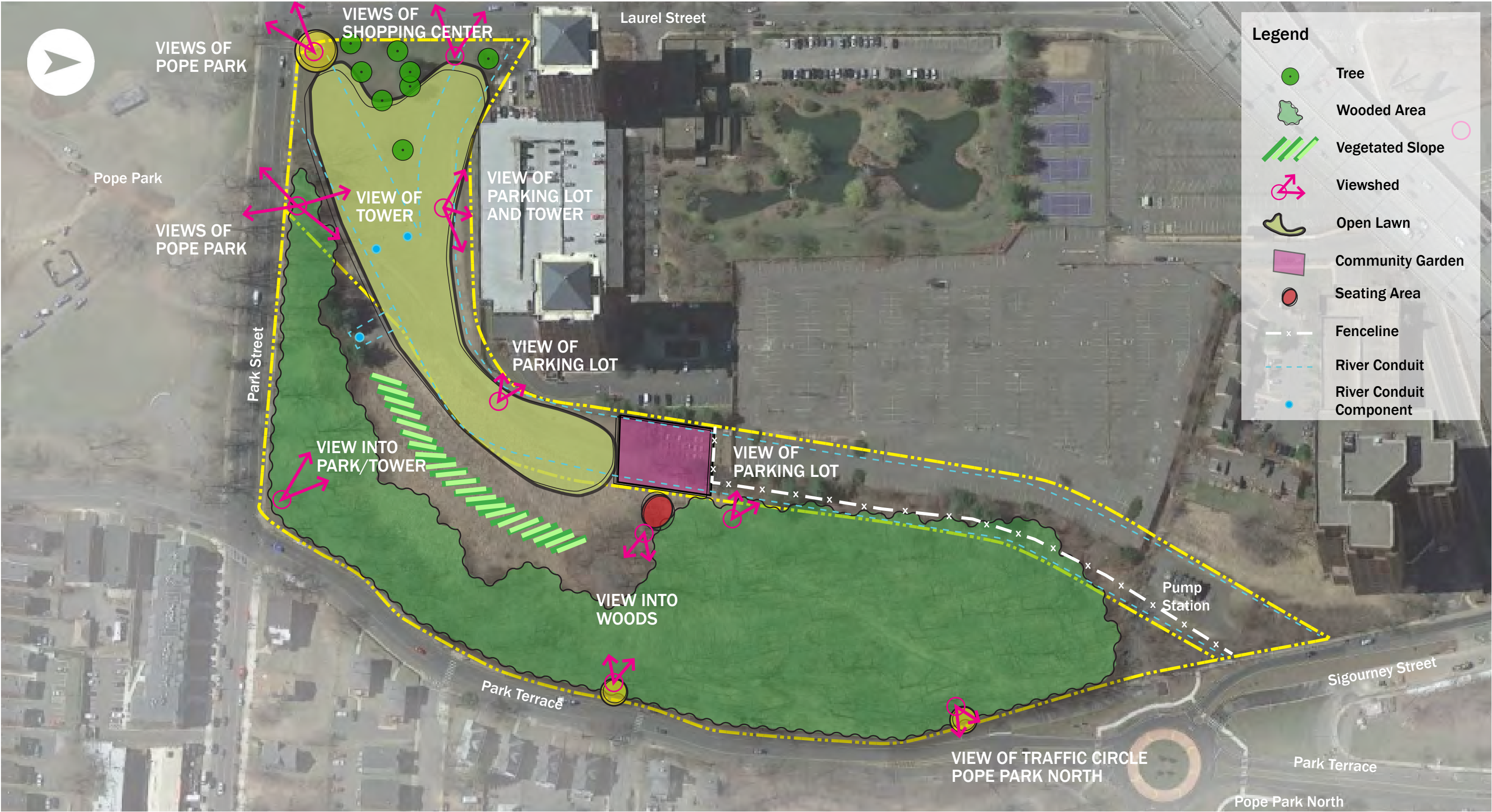


# EXISTING CONDITIONS: CIRCULATION



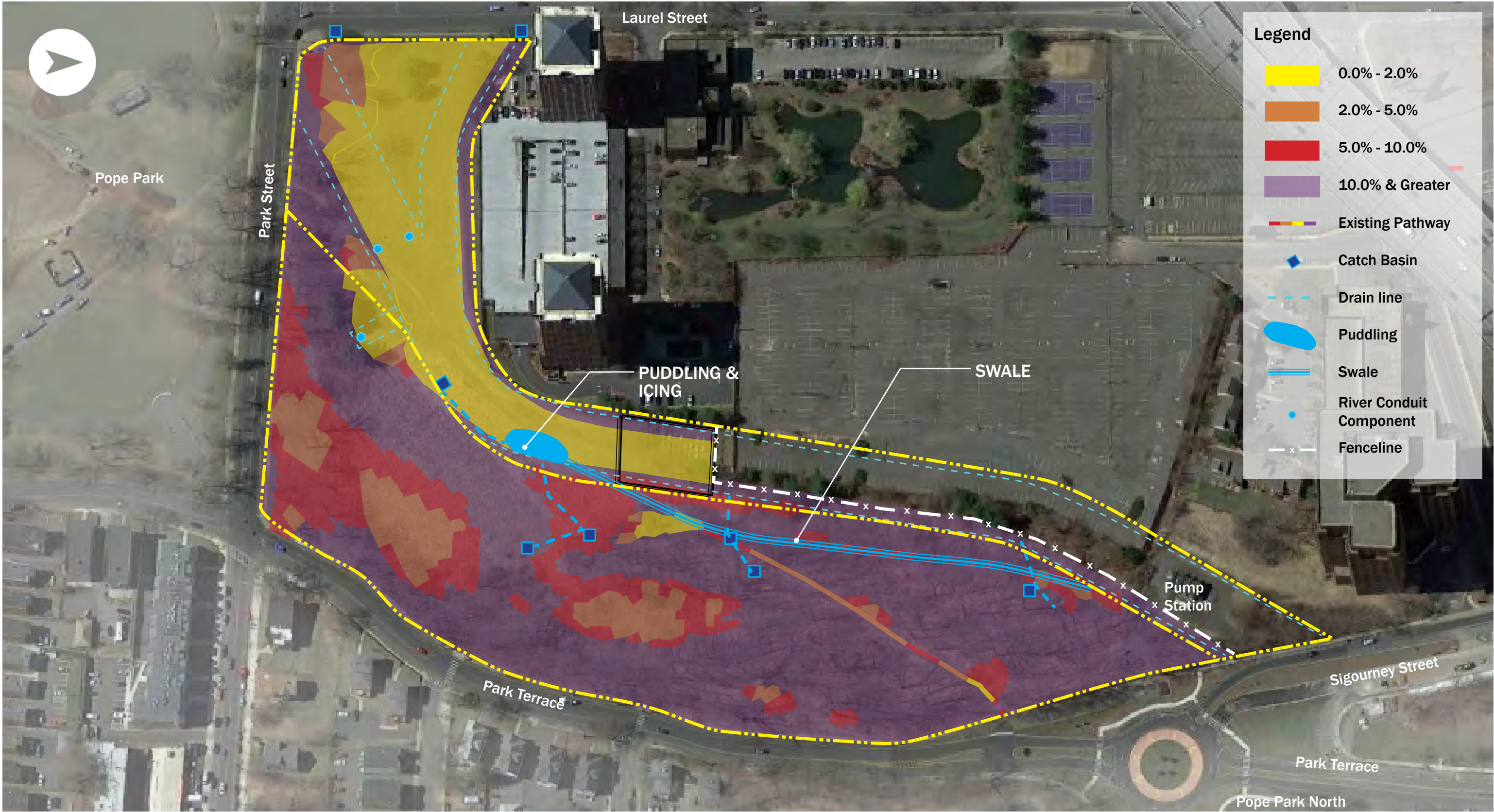


# EXISTING CONDITIONS: VEGETATION & VIEWS



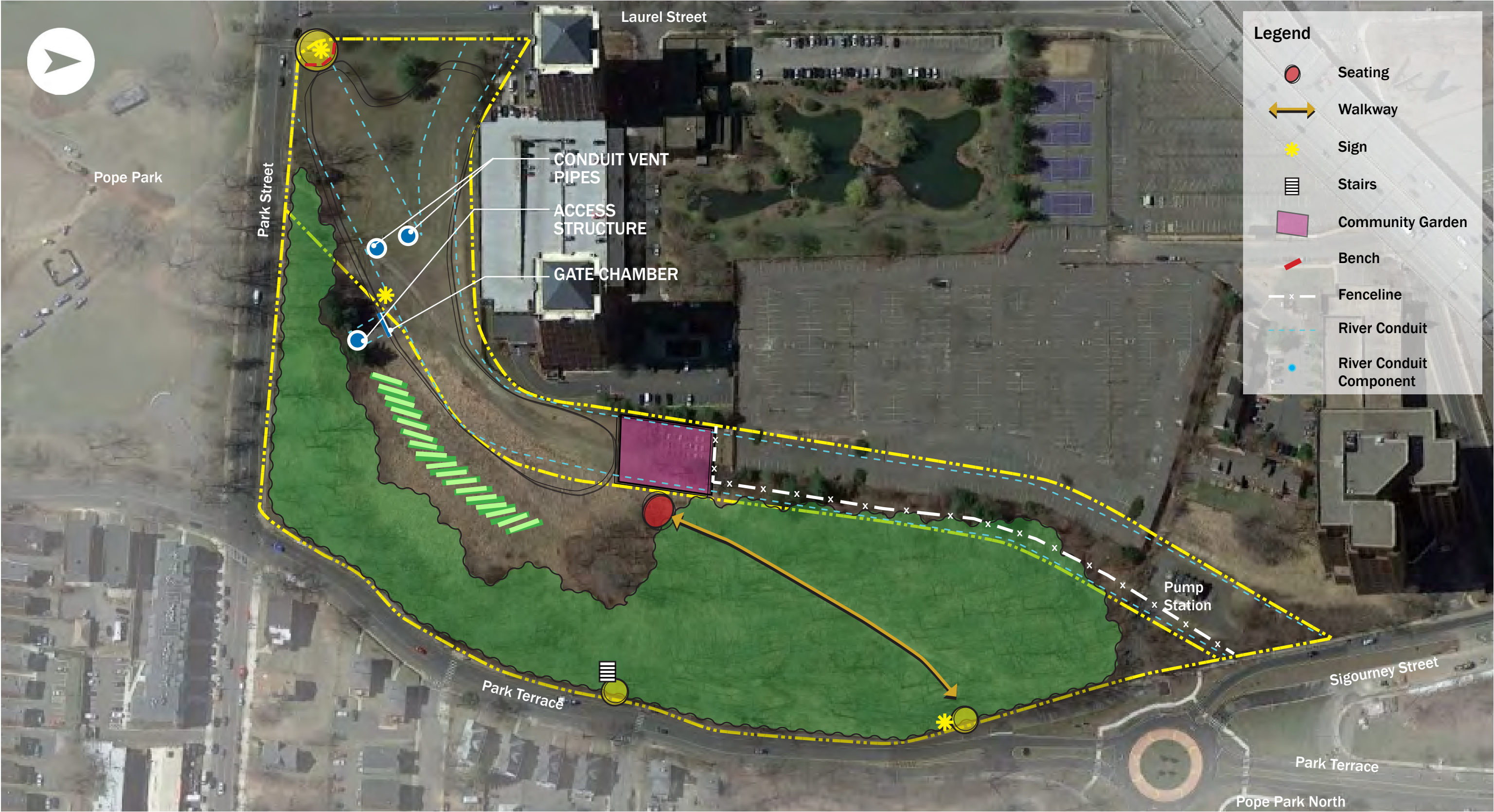


# EXISTING CONDITIONS: TOPOGRAPHY & DRAINAGE





# EXISTING CONDITIONS: AMENITIES





## CONCEPT PLAN: SCOPE

- new park entries
- universally accessible trail for pedestrians & cyclists
- rehabilitate brownstone seating area
- provide additional park seating
- maintain open space for passive play
- identify vegetation management zones
- planting plan which reflects Olmstedian aesthetic
- include edible fruit as extension of the community garden
- establish green infrastructure/stormwater management with education component
- encourage safety & security by improving visibility
- plan for site lighting
- maintain existing vehicular circulation for community gardeners
- connect to sidewalk of Park Terrace near Sigourney Street traffic circle

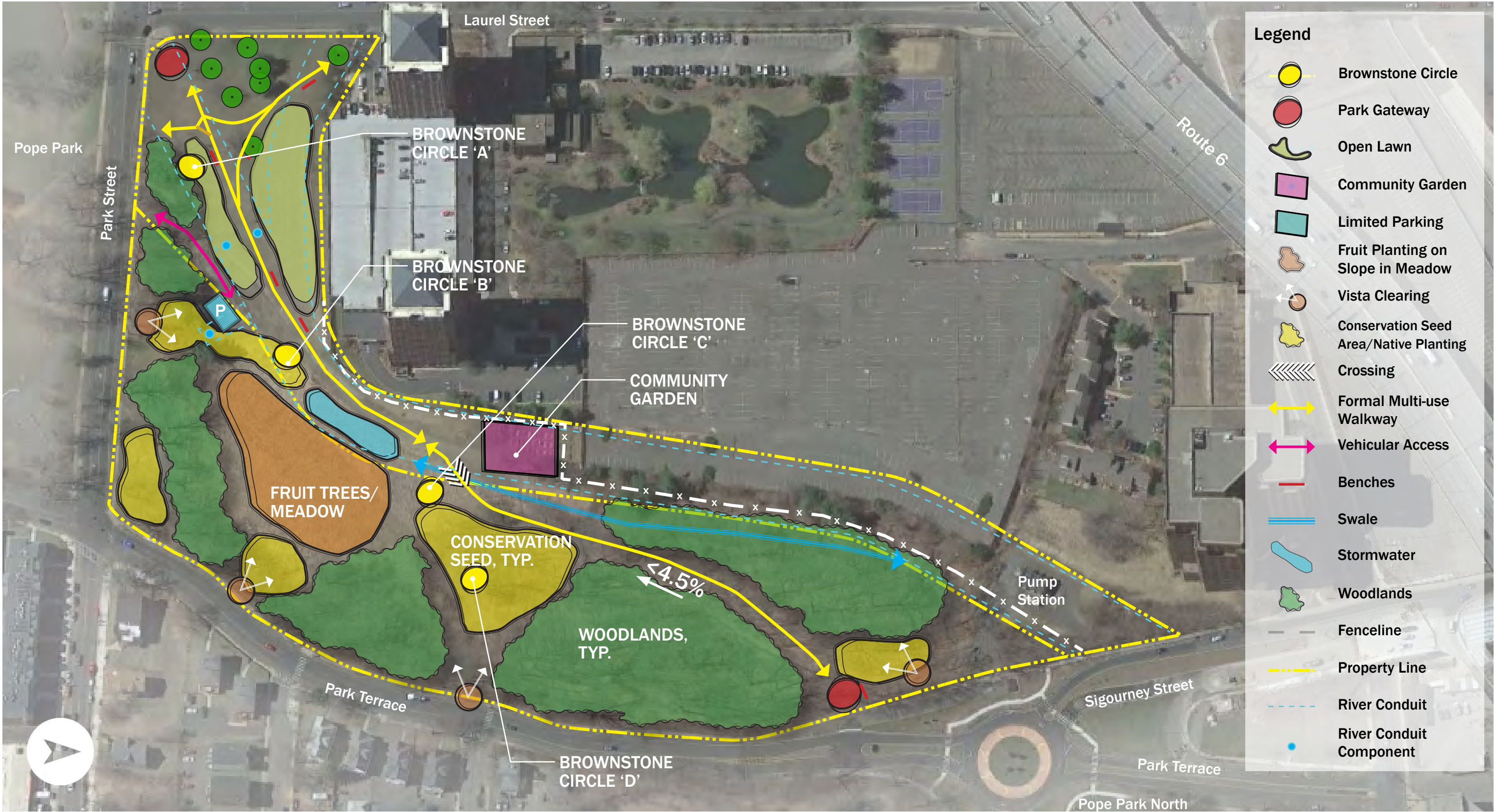


# CONCEPT PLAN: ALTERNATIVE A



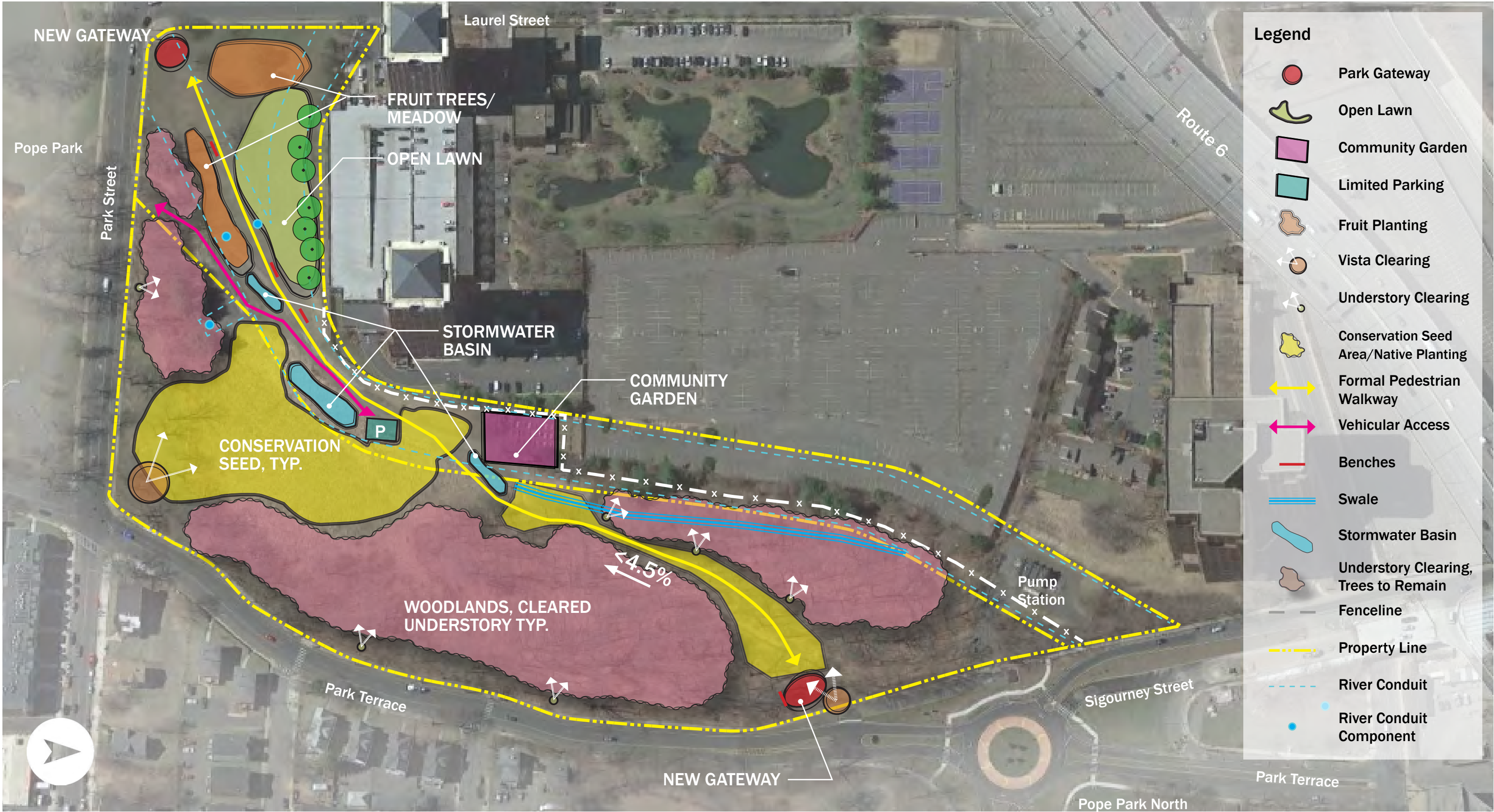


# CONCEPT PLAN: ALTERNATIVE A - SEATING



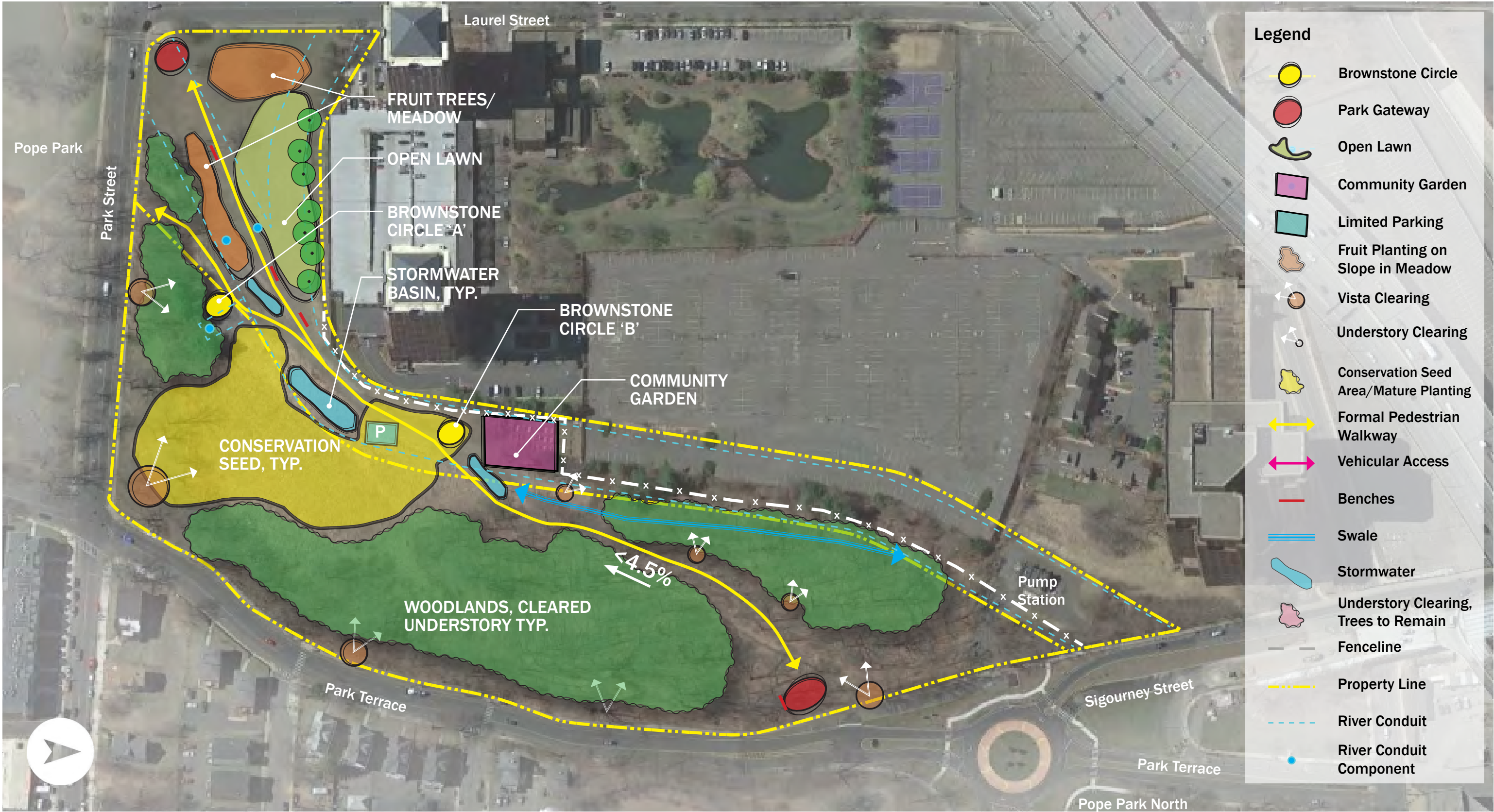


# CONCEPT PLAN: ALTERNATIVE B





# CONCEPT PLAN: ALTERNATIVE B - SEATING





# ALTERNATIVES IN COMPARISON

## Alternative A

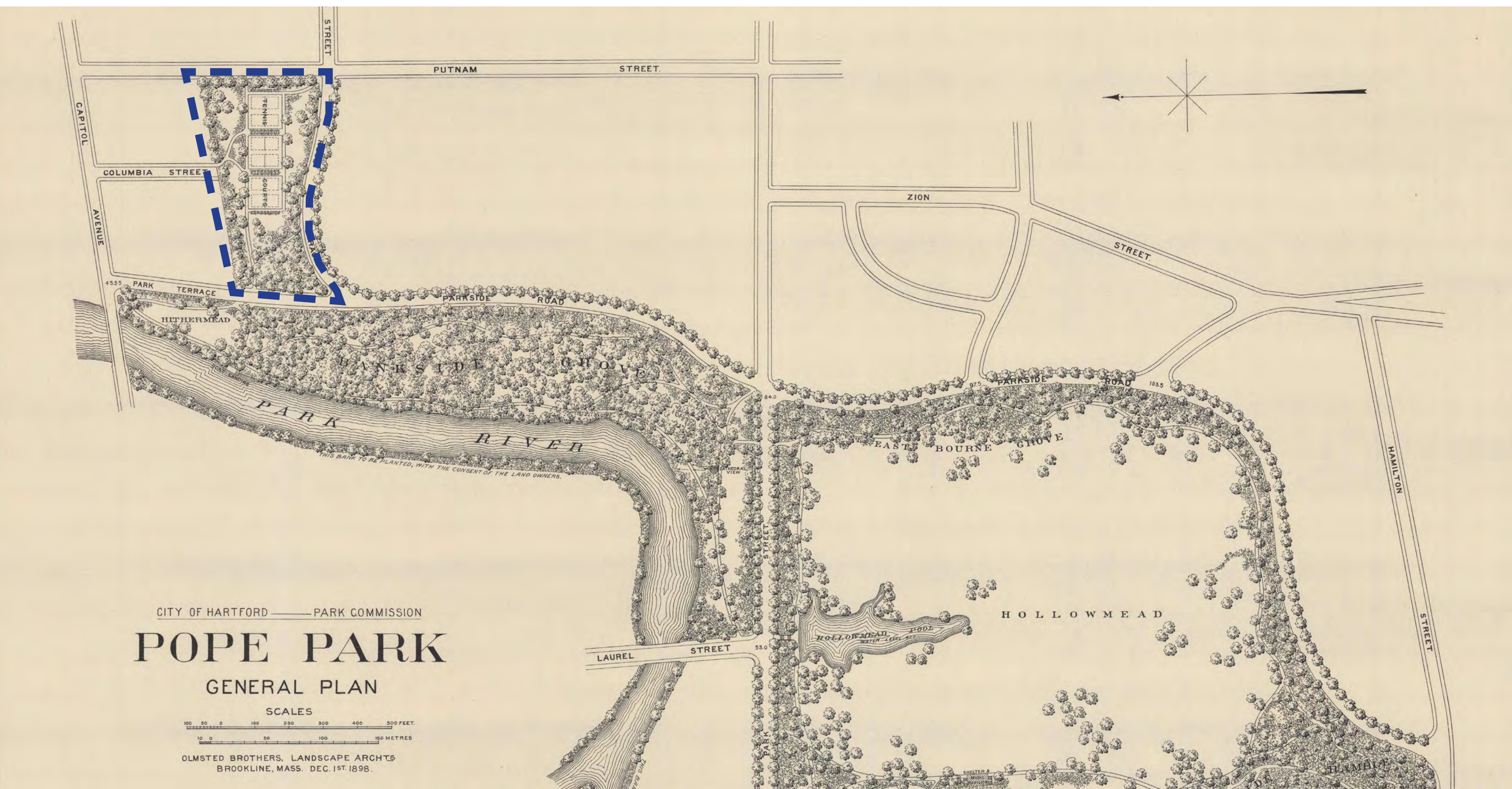
- Limited vehicular access to community garden
- Larger, single stormwater feature
- Significant woodland clearing for safety/security
- Several options (4) for brownstone seating location
- Edible fruit planting not universally accessible
- Requires crossing over swale
- Open lawn for passive play  $\pm 180$  ft by 280 ft, but crosses multi-use trail

## Alternative B

- Allows vehicular access closer to community garden (more impervious surface)
- Multiple stormwater features
- Understory clearing for safety/security
- More limited options (2) for brownstone seating location
- Edible fruit planting universally accessible, near Park & Laurel Streets
- No swale crossing; re-grading to shorten swale
- Open lawn for passive play  $\pm 100$  ft by 320 ft

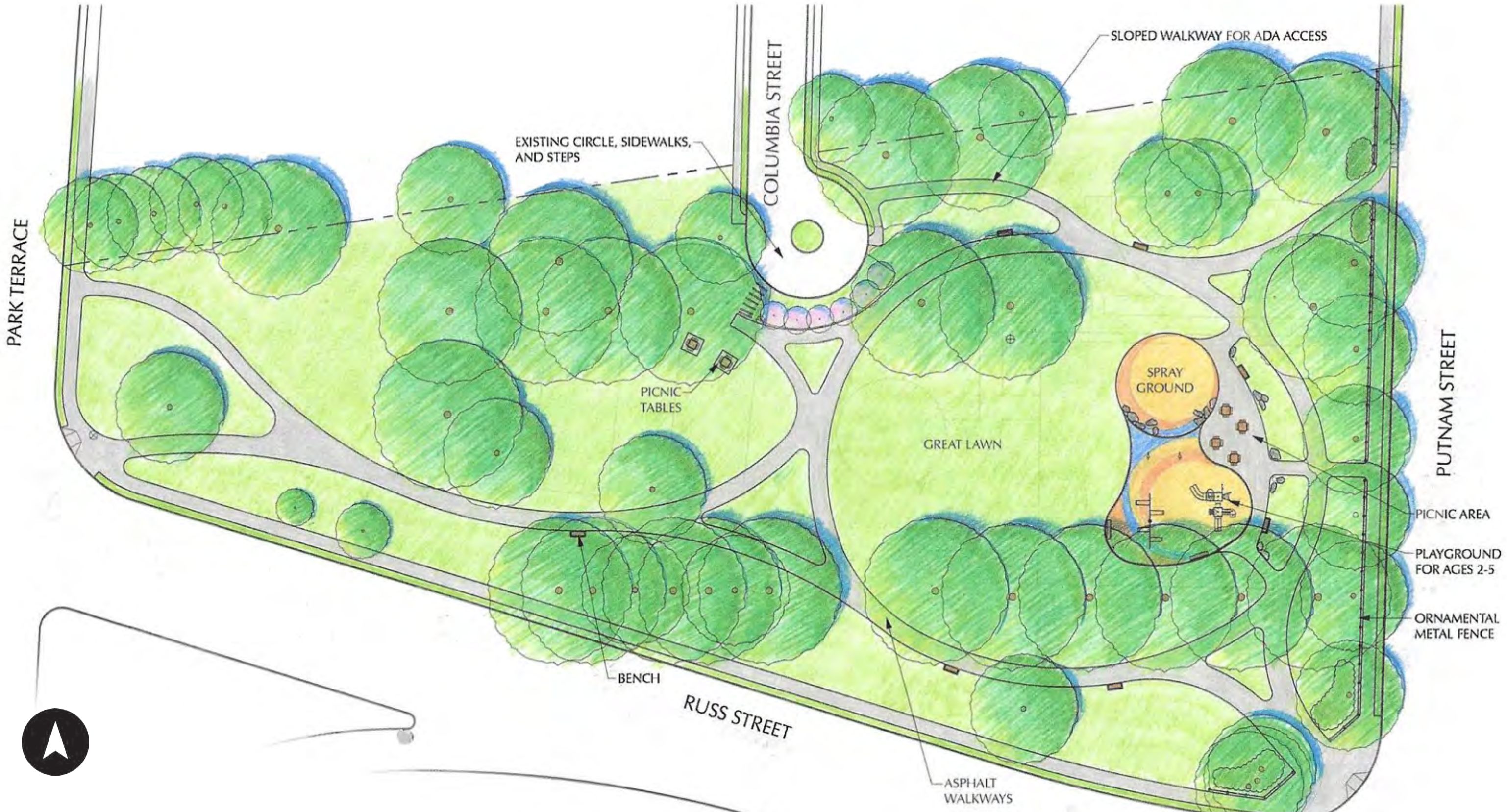


OLMSTED BROTHERS PLAN, 1898





2010 SITE PLAN





# 2013 PHASE 1 SITE PLAN



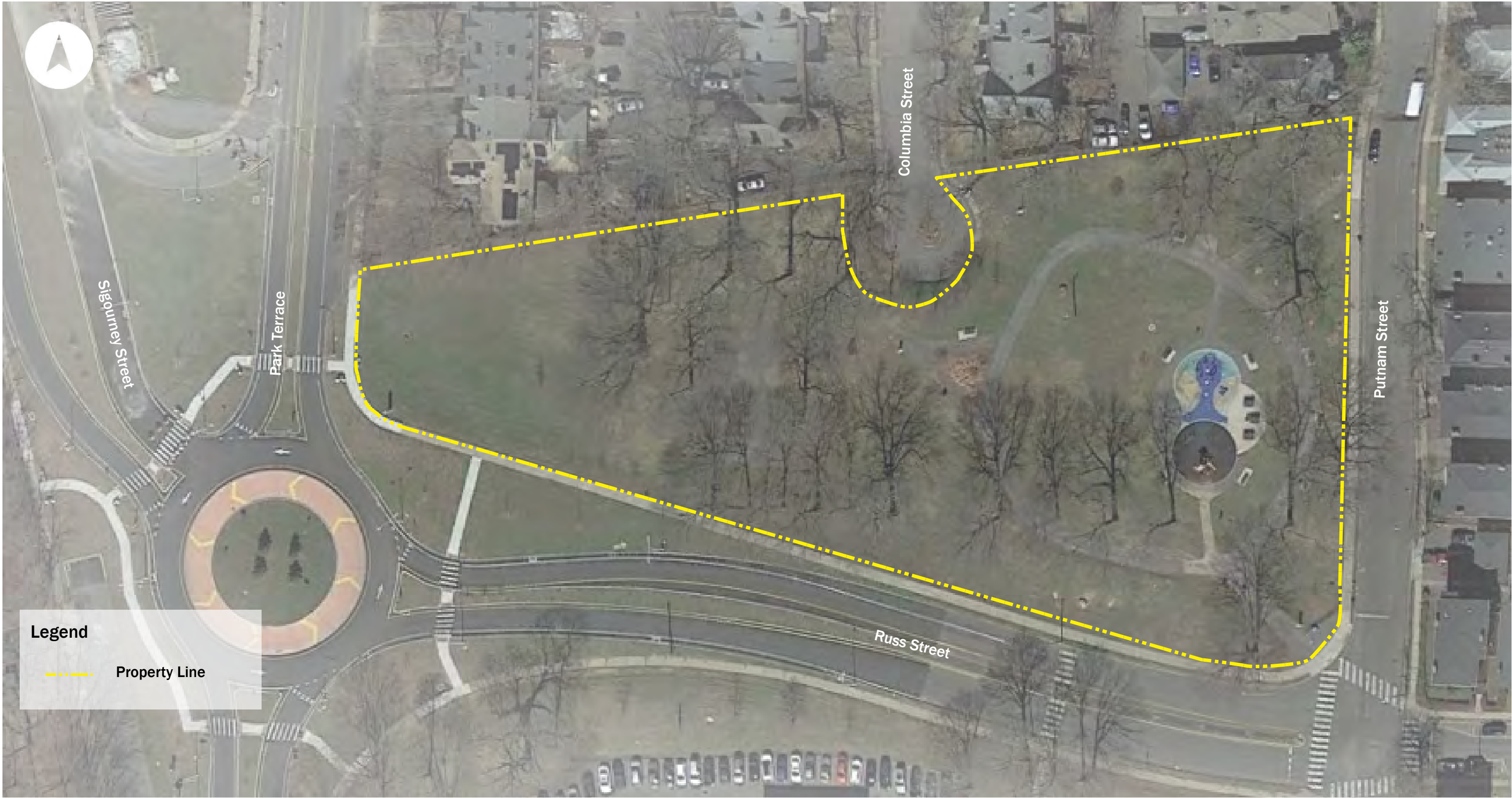
CITY OF HARTFORD  
POPE PARK NORTH

CONCEPTUAL DESIGN  
OCTOBER 3, 2022

The logo for KZLA, featuring the call letters 'KZLA' in a bold, sans-serif font. The 'KZ' is in a light green color, and the 'LA' is in a dark blue color.



# EXISTING CONDITIONS





## EXISTING CONDITIONS: PARK USE



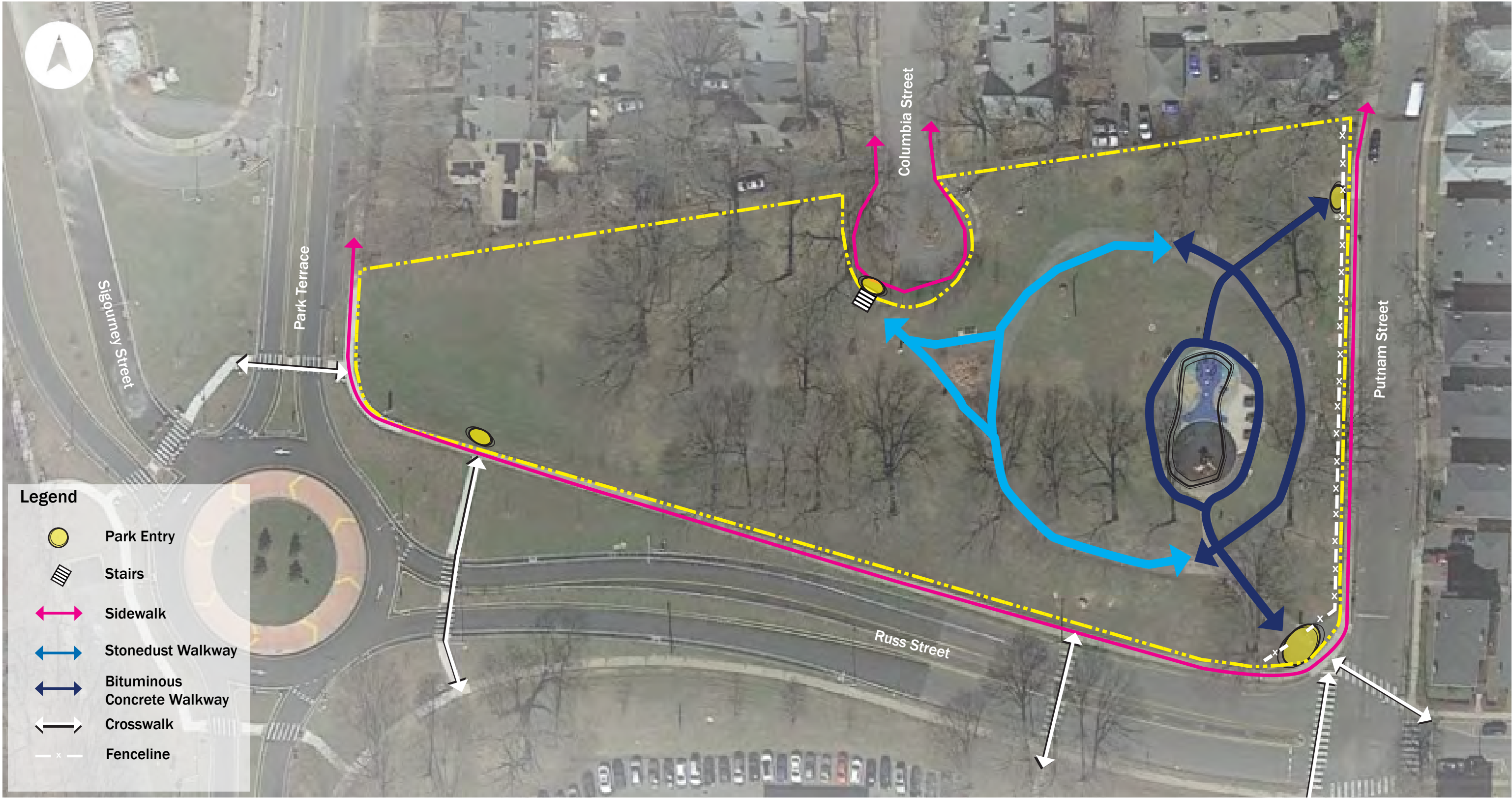
CITY OF HARTFORD  
POPE PARK NORTH

CONCEPTUAL DESIGN  
OCTOBER 3, 2022





# EXISTING CONDITIONS: CIRCULATION





# EXISTING CONDITIONS: VEGETATION & VIEWS





# EXISTING CONDITIONS: TOPOGRAPHY & DRAINAGE





# EXISTING CONDITIONS: AMENITIES





## CONCEPT PLAN: SCOPE

- extend the existing walkway system to connect west beyond Columbia Street to Park Terrace
- formalize the existing walkway loop
- create accessible connection to the Columbia Street turnaround
- removal of former basketball court hardscape
- manage drainage near Park Terrace
- general site improvements to the Pope Park North



# CONCEPT PLAN: ALTERNATIVE A





# CONCEPT PLAN: ALTERNATIVE A





# CONCEPT PLAN: ALTERNATIVE B





# CONCEPT PLAN: ALTERNATIVE B - GRADING STUDY





## DISCUSSION

Thoughts?

Comments?

Concerns?



## NEXT STEPS

- design development
- advanced grading studies
- next community meeting: 4-6 weeks,  
early-mid November