



APR. 18<sup>TH</sup>, 2024



City of Hartford  
Department of  
Public Works

Presentation

By:



LIFECARE DESIGN INC.

Pope Park  
West  
Renovations



City of Hartford  
Department of  
Public Works

Presentation

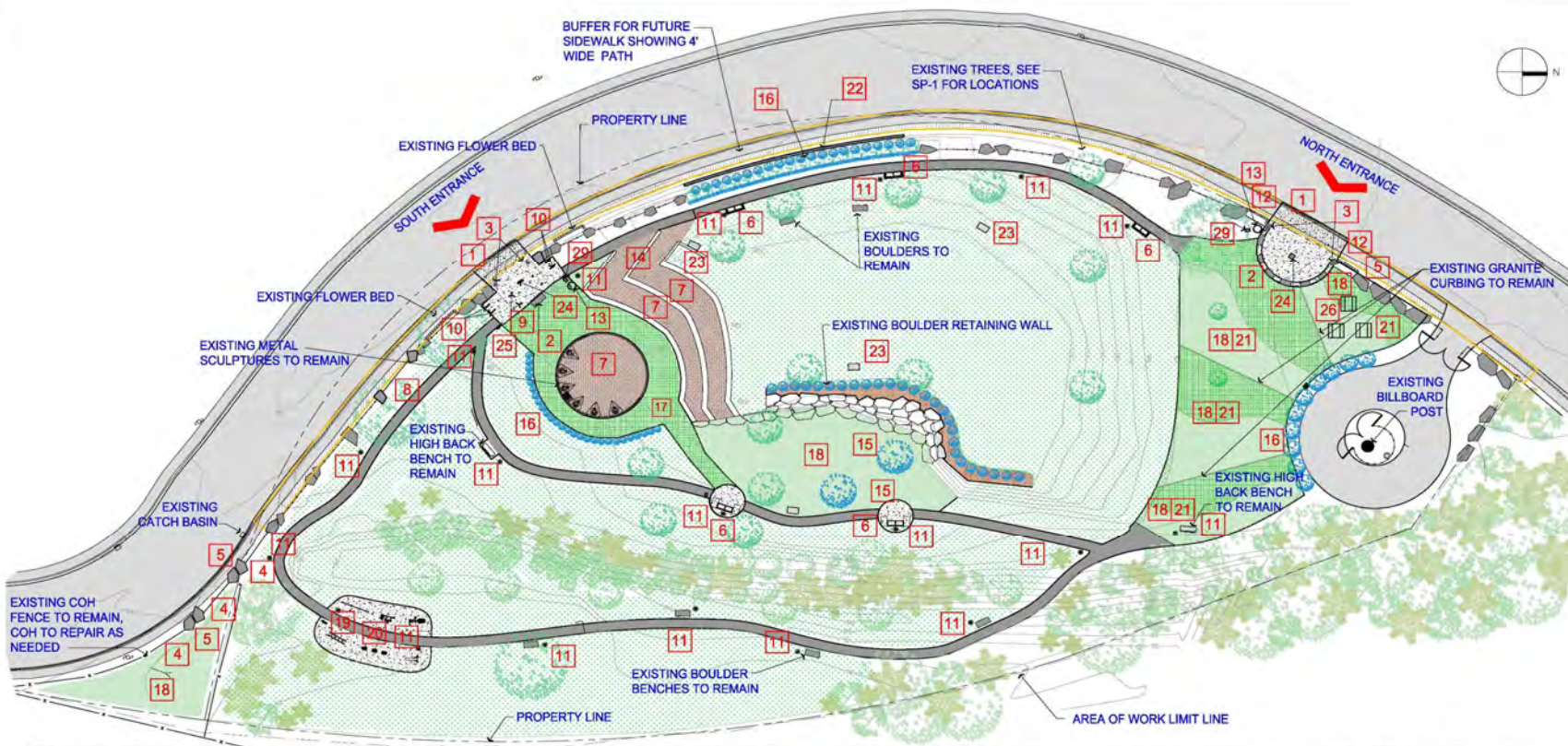
By:



LIFECARE DESIGN INC.

PROPOSED  
SITE PLAN







Pope Park  
West  
Renovations



1 PROPOSED SITE PLAN

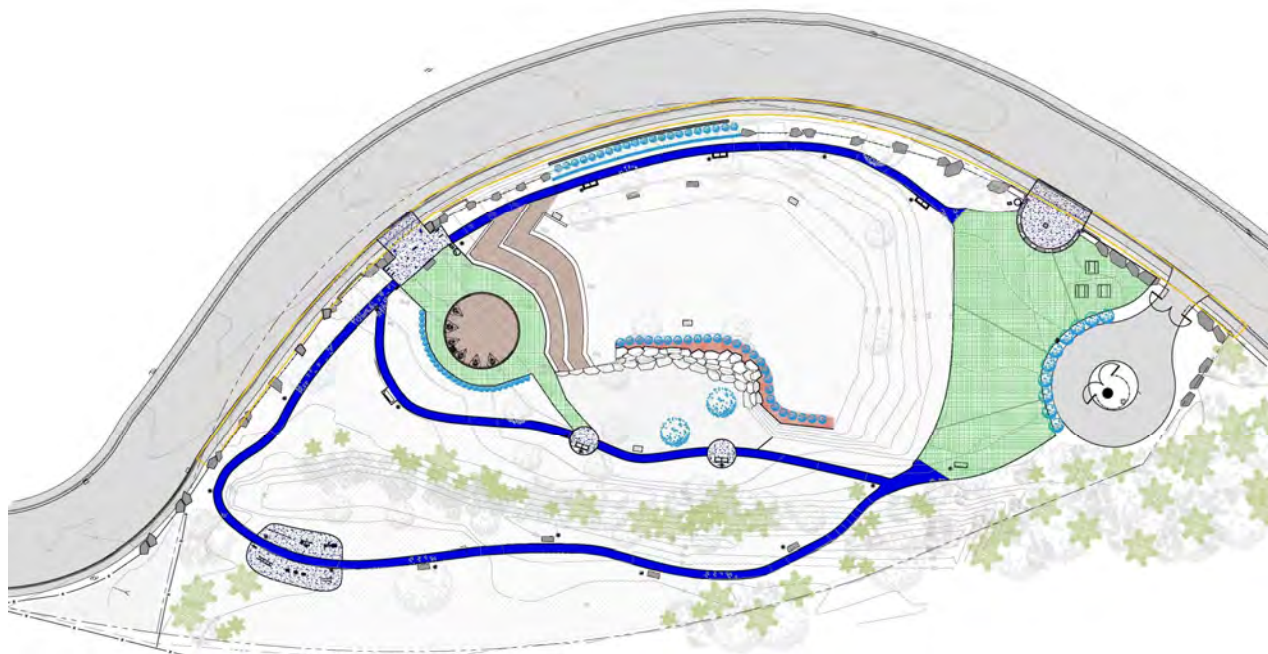


- 1 PROVIDE CONCRETE APRON, SEE PARTIAL PLANS FOR DETAILS.
- 2 PROVIDE GRANITE BENCH, SEE PARTIAL PLANS FOR DETAILS.
- 3 PROVIDE BRICK AND GRANITE POST CURBED WITH SOLAR LIGHT, SEE PARTIAL PLANS FOR DETAILS.
- 4 PROVIDE NEW FENCE PANELS TO MATCH EXISTING SEE FENCE DETAILS.
- 5 PROVIDE NEW RELOCATED BOULDER, SEE DEMO PLAN FOR DETAILS.
- 6 REB GRIP IRON BENCH SET ON CONCRETE PAD, SEE FENCE DETAILS.
- 7 PROVIDE STAINED STRIPED CONCRETE, SEE PARTIAL PLANS FOR DETAILS.
- 8 RELOCATED FENCE PANEL, REPOSITION ENTRY.
- 9 NEW REMOVABLE STEEL BOULDER.
- 10 1 LOCK POINT LOOP SIDE BACK.
- 11 NEW SOLAR LIGHT POST.
- 12 NEW PUMPER BED USED WITH 1/2" LOCK BOLD CONCRETE BUSHING.
- 13 NEW CART IRON TRASH RECEPTACLE TO MATCH BENCH.
- 14 REPAIR UNLOCK APERTURE/HELM METALING WALLS.
- 15 NEW TREES SEE LANDSCAPING PLAN.
- 16 NEW BUSHES, SEE LANDSCAPING PLAN.
- 17 HEAVY DUTY RECYCLED PLASTIC TRIP STONE PAVING, OPEN CELL, FOR GRASS GROWTH.
- 18 NEW TOPSOIL, 1/4\"/>
- 19 ALTERNATE 4 KOPFMAN BRAND OUTDOOR EXERCISE EQUIPMENT ON CONCRETE PAD AND BINETURF.
- 20 ALTERNATE 4 NEW SIGN TO MATCH PARK STANDARD 1/4\"/>
- 21 ALTERNATE 4 HEAVY DUTY RECYCLED PLASTIC TRIP STONE PAVING, OPEN CELL, FOR GRASS GROWTH.
- 22 ALTERNATE 4 GRANITE CURB TO EDGE HIGHEST POINT OF BENCH, SEE FENCE DETAILS.
- 23 ALTERNATE 4 INFORMATION PANEL, MOUNTED ON CONCRETE BASE, SEE FENCE DETAILS.
- 24 EXISTING SIGN BOLLARD RELOCATED.
- 25 NEW SIGN BOLLARD INDICATING ADA ROUTE.
- 26 METAL (3) PONGS AND BENCH SETS.
- 27 EXISTING SEEDED AREA, SUPPLEMENT IN RESEED AREAS WITH NEW SEED AND FERTILIZER TYPE.
- 28 NEW ASPHALT PAVING ON EXISTING COMPACTED GRAVEL, TYPE.
- 29 DOOR STATION BASS AND RECEPTABLES.

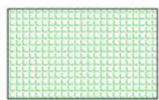
	EXISTING SEEDED AREA, SUPPLEMENT IN RESEED AREAS WITH NEW SEED AND FERTILIZER.		NEW ASPHALT
	STONE RESIN OPEN CELL PAVING WITH NEW SEEDED AREA BETWEEN CELLS.		NEW CONCRETE
	NEW SEEDED AREA		NEW STAINED AND REPAIRED CONCRETE

2 SPECIFIC CONSTRUCTION NOTES

3 HATCH KEY



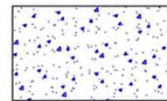
Asphalt



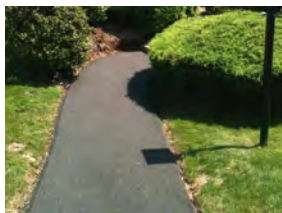
Permeable Pavers



Stamped Concrete



Concrete



City of Hartford  
Department of  
Public Works

Presentation

By:



LIFECARE DESIGN INC.

HARDSCAPES

Pope Park  
West  
Renovations



City of Hartford  
Department of  
Public Works

Presentation

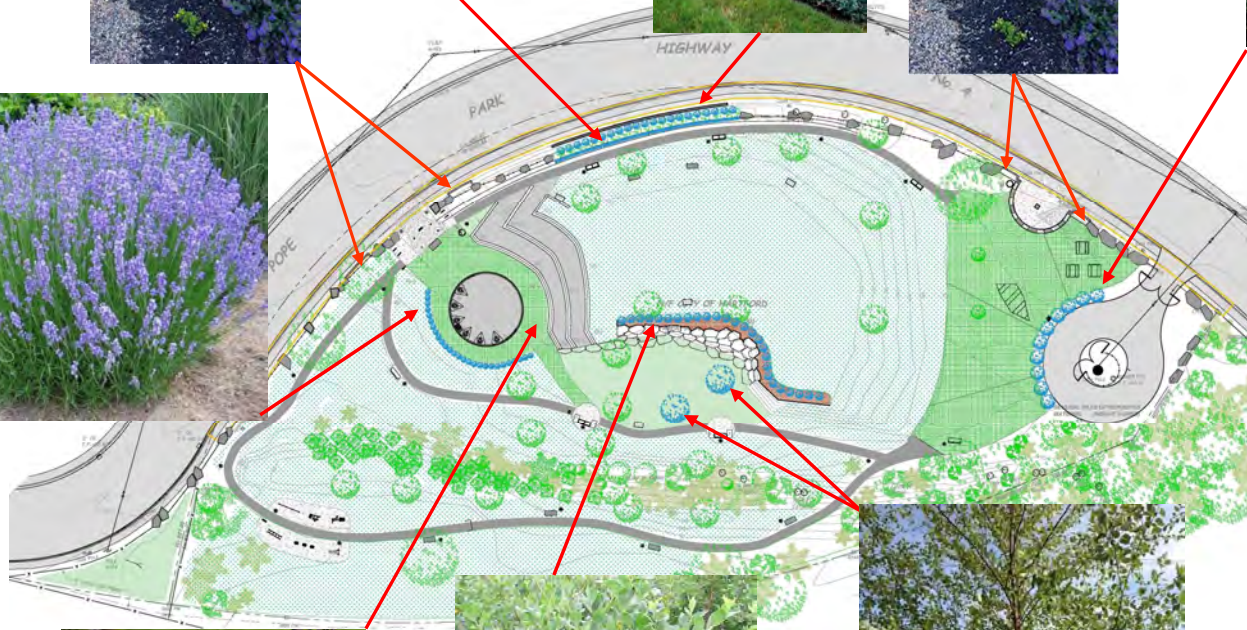
By:



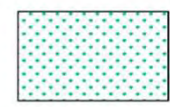
LIFECARE DESIGN INC.

LANDSCAPE

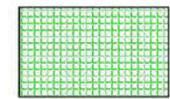
Pope Park  
West  
Renovations



New Bushes,  
Trees, Flowers



Existing Lawn

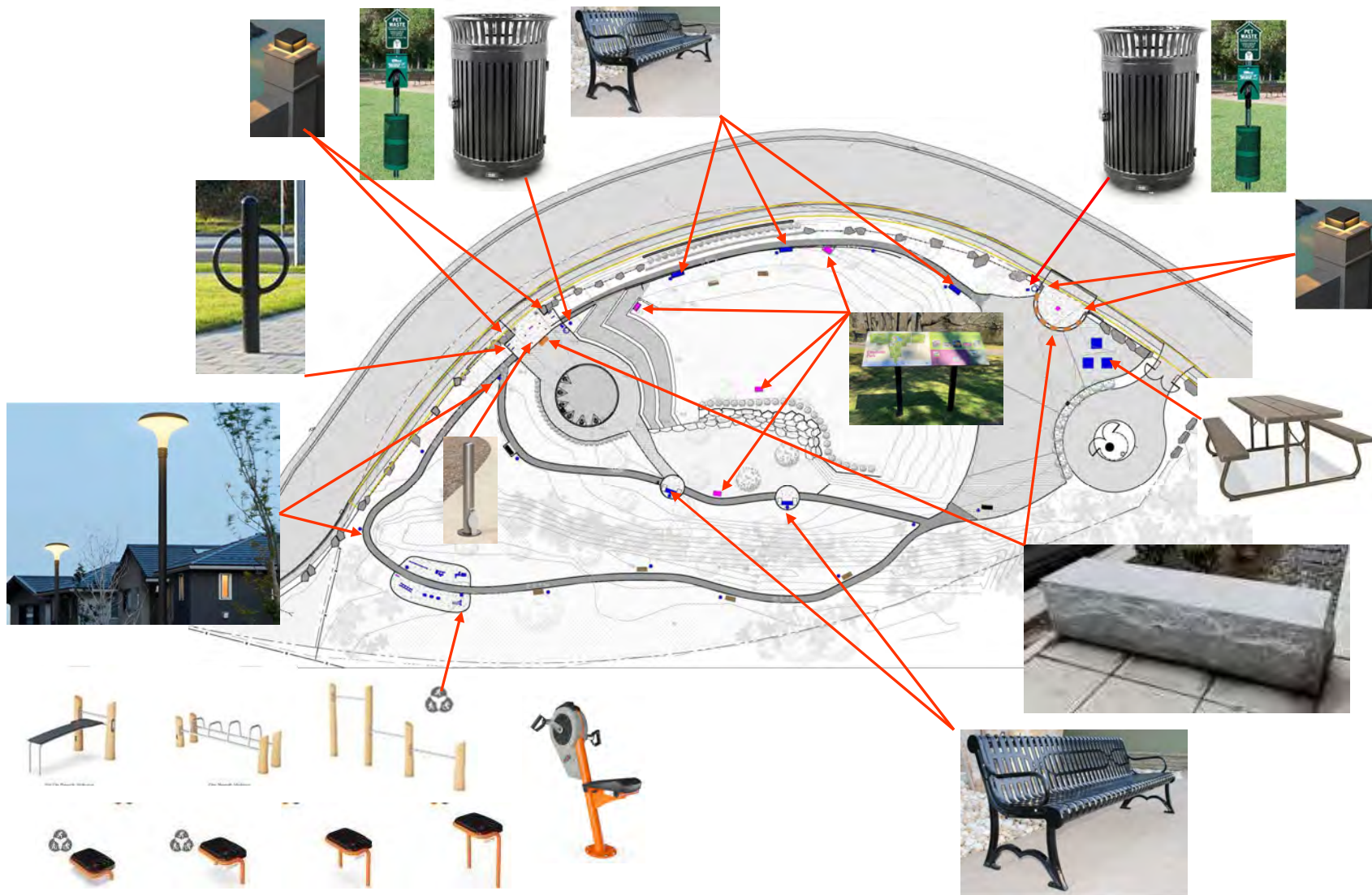


New seeded  
Thru Pavers



New Seeded





City of Hartford  
Department of  
Public Works

Presentation

By:



LIFECARE DESIGN INC.

NEW  
FURNITURE

Pope Park  
West  
Renovations



City of Hartford  
Department of  
Public Works

Presentation

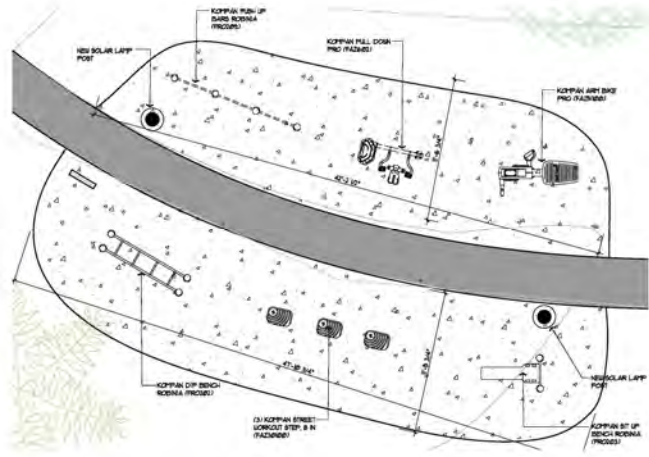
By:



LIFECARE DESIGN INC.

ALTERNATES

Pope Park  
West  
Renovations

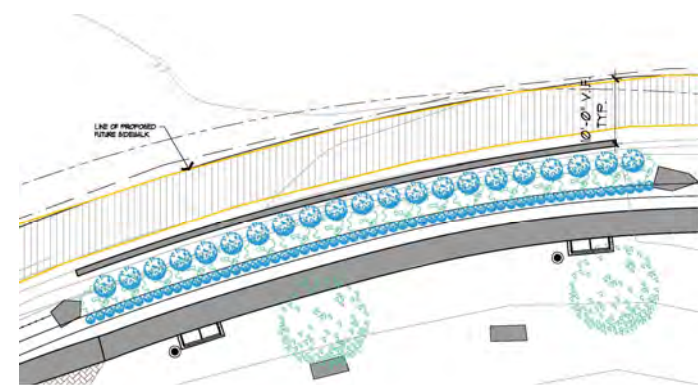


Alternate #1 Exercise equipment, concrete pad, extra signage on each side of asphalt path.

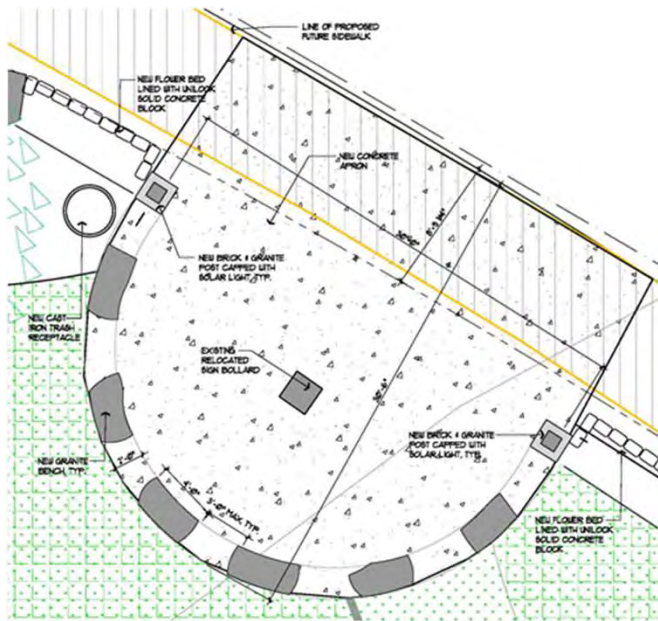
Alternate #3  
Open cell  
concrete pavers  
in this area.



Sample of informational panels (this is from Elisabeth Park) to describe history of Pope Park, the industrial area (now the Parkville historical mill district), and what is a sustainable park.



Granite curb to retain berm



Proposed North Entry Plan



Existing North Entry



Proposed North Entry



City of Hartford  
Department of  
Public Works

Presentation

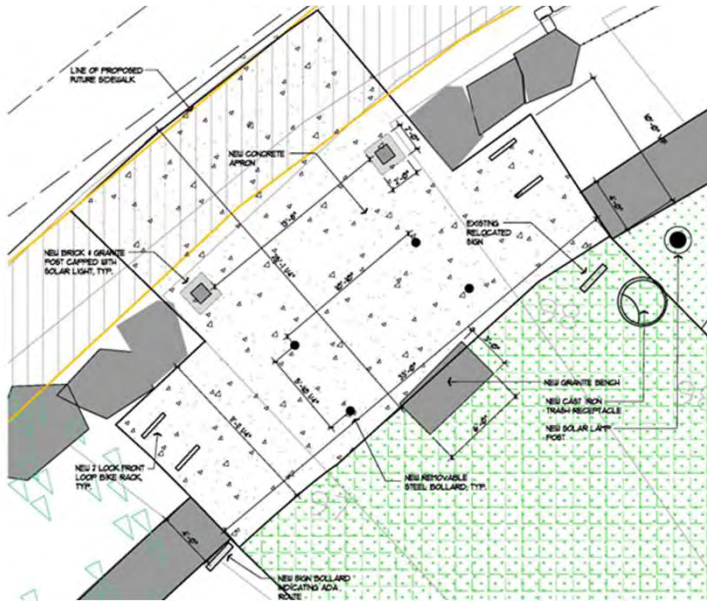
By:



LIFECARE DESIGN INC.

NORTH  
ENTRY

Pope Park  
West  
Renovations



Proposed South Entry Plan



Existing South Entry



Proposed South Entry Elevation



City of Hartford  
Department of  
Public Works

Presentation

By:



LIFECARE DESIGN INC.

SOUTH  
ENTRY

Pope Park  
West  
Renovations