



City of Hartford  
Office of  
Public Works

SITE  
IMPROVEMENTS  
TO  
POPE PARK WEST

Pope Park Highway #4  
Hartford, Ct.

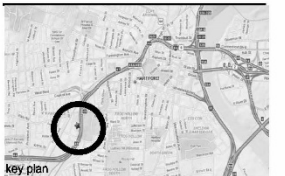


LIFECARE DESIGN INC.

designing for life  
architecture - planning - interior design  
440 main street, suite G, ridgefield, ct 06067 203 436 8888 fax: 203 436 8778

CONSULTANTS:

Loureiro Engineering  
Associates, Inc.  
100 Northwest Drive Plainville, CT 06062  
tel: (860) 747-6181 fax: (860) 747-8822



issue or revision	date

drawing title

SITE PLAN &  
ALTERNATES

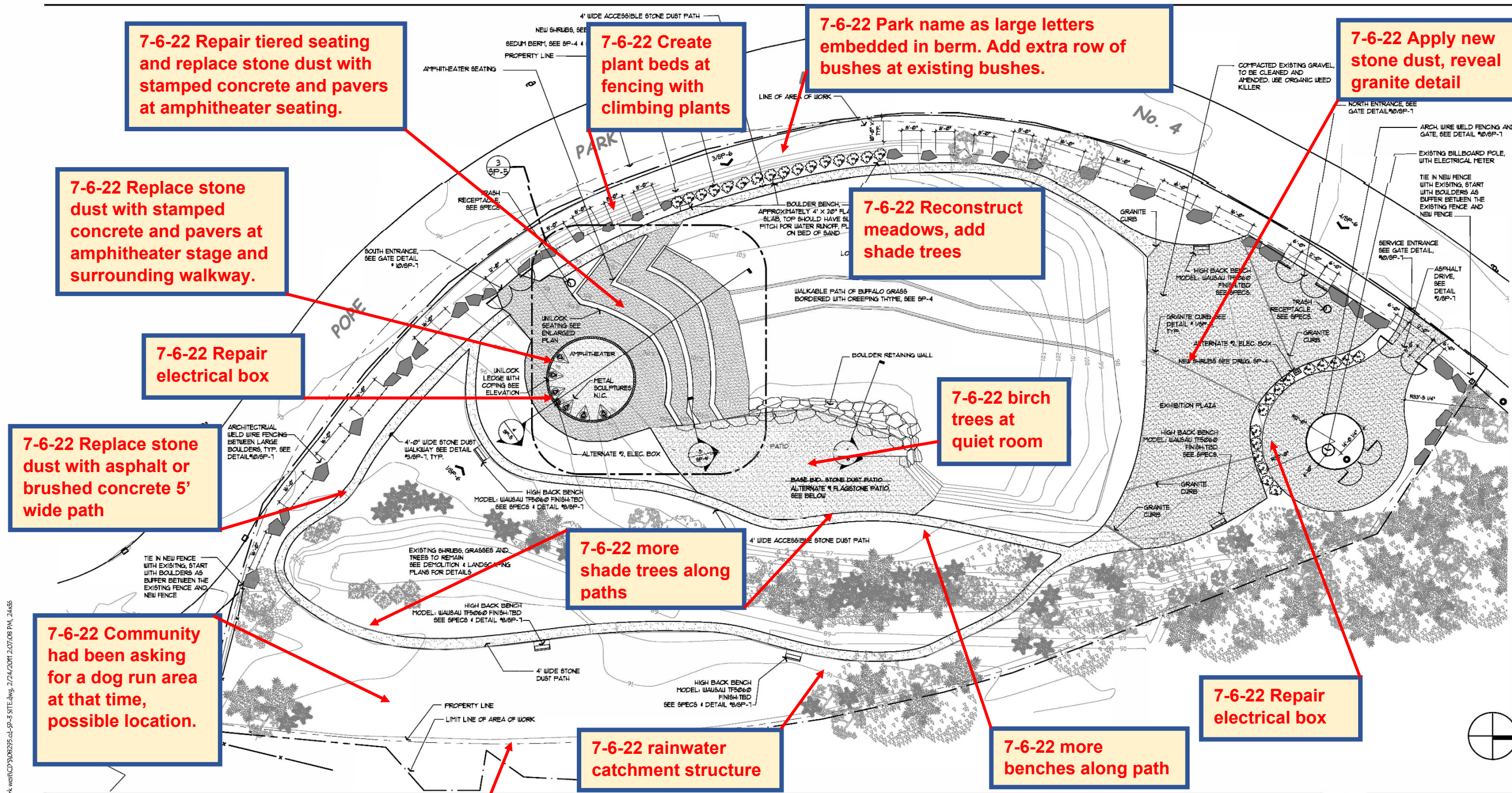
scale:	designer:
1:20	h.c.b.
project no.:	drawn by:
08295	n.s.
date:	checked by:
3/01/11	h.c.b.
seal	sheet number

SP-3

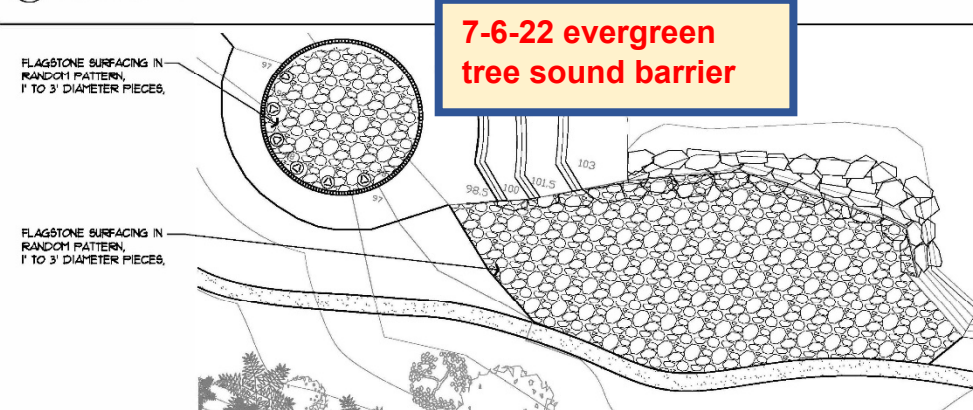
sheet

6 of 10

THIS DOCUMENT SHALL NOT BE MODIFIED IN ANYWAY BY ANY PERSON UNLESS ACTING UNDER THE DIRECTION OF A REGISTERED ARCHITECT. EVERY DRAWING SEALED AND SIGNED BY A REGISTERED ARCHITECT COULD BE MODIFIED ONLY BY A REGISTERED ARCHITECT AND THE NATURE OF SUCH MODIFICATION DESCRIBED SHALL BE FOLLOWED BY THE DATE OF MODIFICATION PLUS THE SEAL AND SIGNATURE OF THE ARCHITECT MAKING SUCH MODIFICATION.

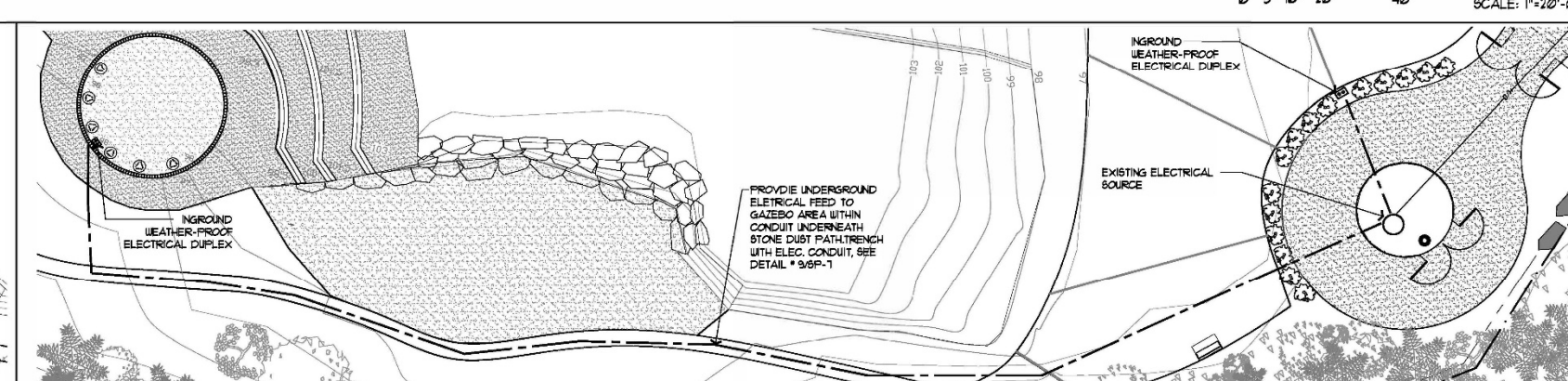


① SITE PLAN



② ALTERNATE #1 FLAGSTONE SURFACING

SCALE: 1"=20'-0"



③ ALTERNATE #2 SITE ELECTRICAL

SCALE: 1"=20'-0"

\\newright\work\htrm\c\PROJECTS\DRAWINGS\ARCH\PROJ\08295 pope park west\CD\08295-01-SP-3 SITE PLAN.dwg, 2/24/2011 2:07:06 PM, 2A356