

FOR LEASE

2,856 SF
corner office space at
One Burrard Place

Suite 300
1281 Hornby Street
Vancouver, BC

1281 HORNBY
burrardPLACE



Alex Yuen

Personal Real Estate Corporation

604.338.1800

alex.yuen@macdonaldcommercial.com

Macdonald
COMMERCIAL

member of

CORFAC
INTERNATIONAL

PROPERTY SUMMARY

Address

Suite 300, 1281 Hornby Street
Vancouver, BC

Property Type

Office Space

Size

2,856 sq. ft

Net Rent

\$50.00 NNN

Additional Rent

\$22.00 per SF (estimated)

Parking

3 secured, below-grade parking stalls

Available

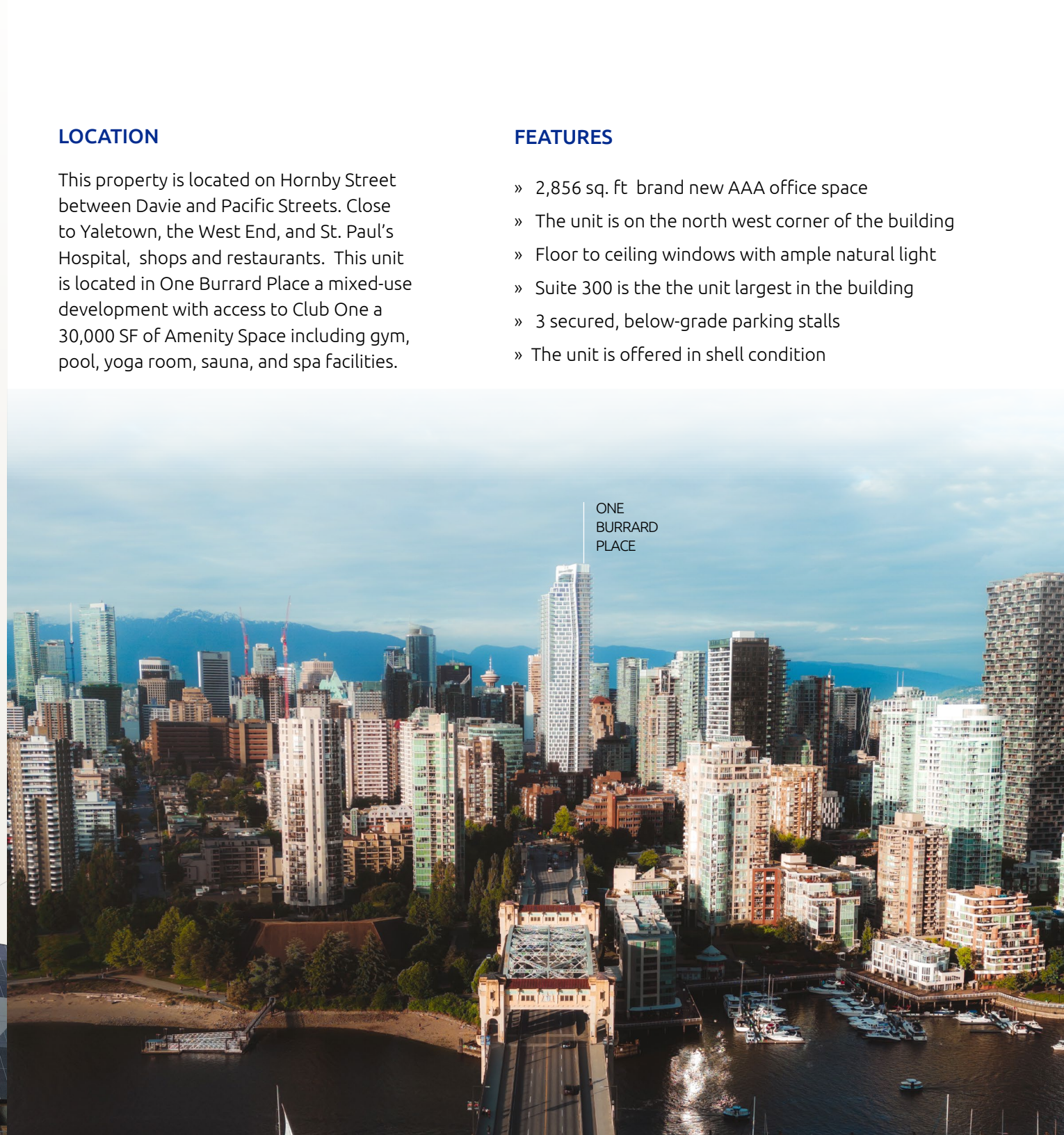
Immediately

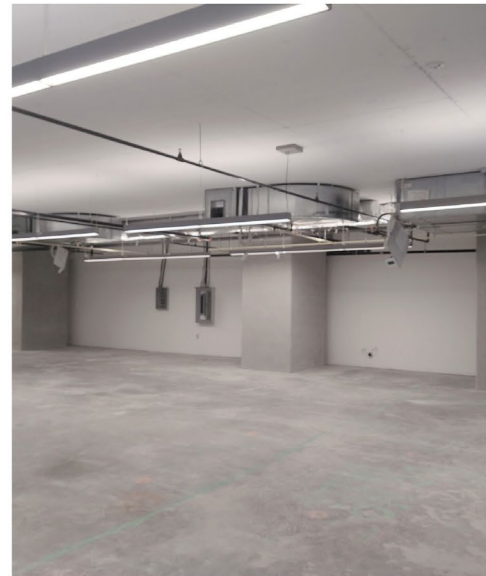
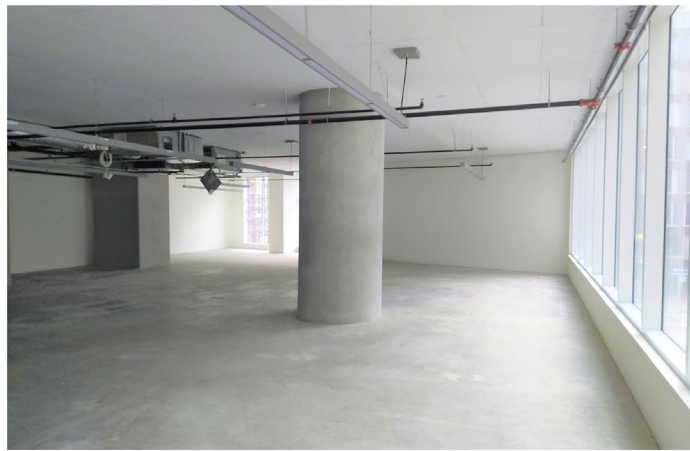
LOCATION

This property is located on Hornby Street between Davie and Pacific Streets. Close to Yaletown, the West End, and St. Paul's Hospital, shops and restaurants. This unit is located in One Burrard Place a mixed-use development with access to Club One a 30,000 SF of Amenity Space including gym, pool, yoga room, sauna, and spa facilities.

FEATURES

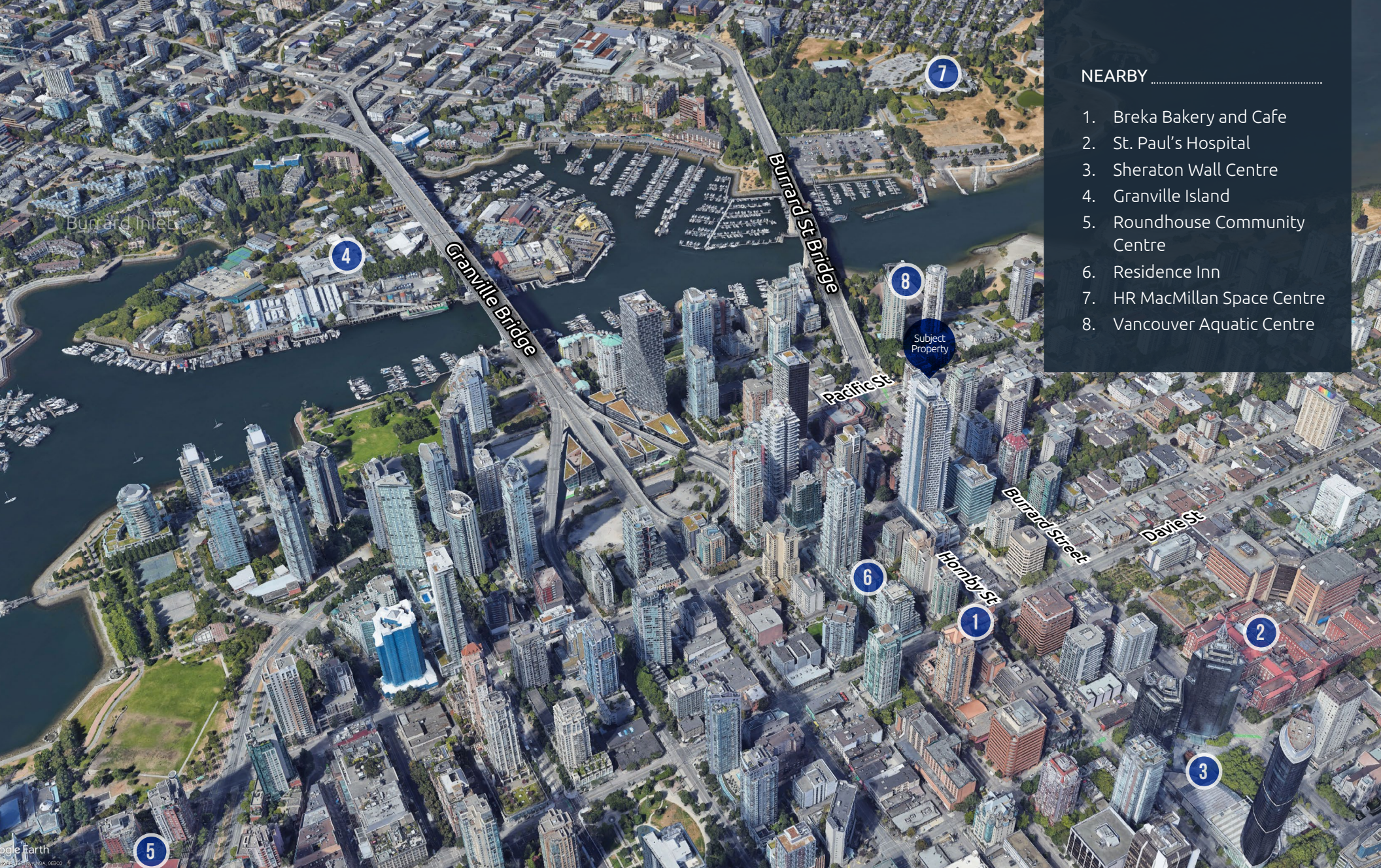
- » 2,856 sq. ft brand new AAA office space
- » The unit is on the north west corner of the building
- » Floor to ceiling windows with ample natural light
- » Suite 300 is the the unit largest in the building
- » 3 secured, below-grade parking stalls
- » The unit is offered in shell condition





ONE
BURRARD
PLACE

Suite 300
1281
**Hornby
Street**



NEARBY

1. Breka Bakery and Cafe
2. St. Paul's Hospital
3. Sheraton Wall Centre
4. Granville Island
5. Roundhouse Community Centre
6. Residence Inn
7. HR MacMillan Space Centre
8. Vancouver Aquatic Centre

Alex Yuen

Personal Real Estate Corporation

604.338.1800

alex.yuen@macdonaldcommercial.com

Although this information has been received from sources deemed reliable, we assume no responsibility for its accuracy, and without offering advice, make this submission subject to prior sale or lease, change in price or terms and withdrawal without notice.

Macdonald
COMMERCIAL