

# SMARTVIEW



## SV<sup>65"</sup><sup>75"</sup><sup>86"</sup> ULTRA SERIES

### ALL-IN-ONE INTERACTIVE DISPLAY FOR MODERN CONFERENCES

**Smartview SV ULTRA** Series conference panel integrates the functions of projector, whiteboard, advertising signage, computer, camera, microphone, audio, etc. It satisfies the needs of small/medium conferences, presentations, corporate training and video-conferencing, while adding the beauty of technology to your conference room.



Wi-Fi Module  
with Wi-Fi 6  
Connectivity



Android 11  
4G Ram / 32G  
Rom



Front Full Range  
Frequency 20W  
Speaker



Broad  
Compatibility



Powered USB  
Type-C



Zero Bonding

### BUILT-IN APPLICATIONS



Wireless  
Screen Sharing



Screen  
Recorder



Classroom  
Share



Split  
Screen



# IDEAL SOLUTION FOR INTELLIGENT CONFERENCE ROOM,



## VIDEO CONFERENCE, DO MORE FOR YOUR BUSINESS

The **Smartview SV ULTRA** Series Conference Panel is compatible with nearly all conferencing software, reducing business travel costs, improving communication, and enhancing collaboration.

## The sharp and immersive visual experience

Zero Bonding



4K Display



Ultra-wide 178°



## Purposefully Designed For The CONFERENCE ROOMS

- Full-featured **Type-C**
- Easy Access **Hot Keys**
- Built-in **HDMI** Out Port



# IDEAL SOLUTION FOR INTELLIGENT CONFERENCE ROOMS

## Modular Securable Wi-Fi 6 Support/Compatibility

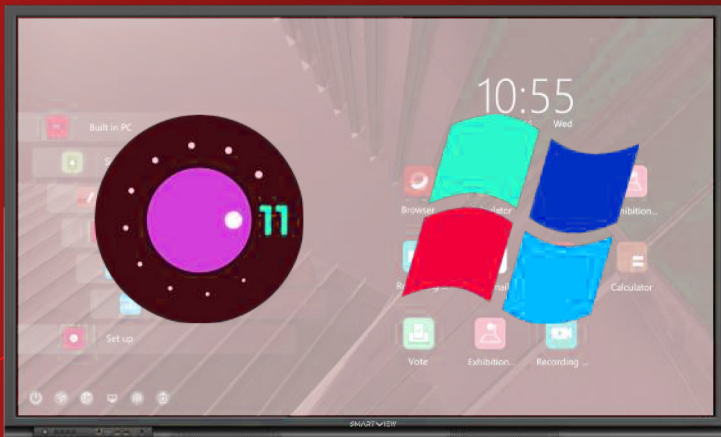
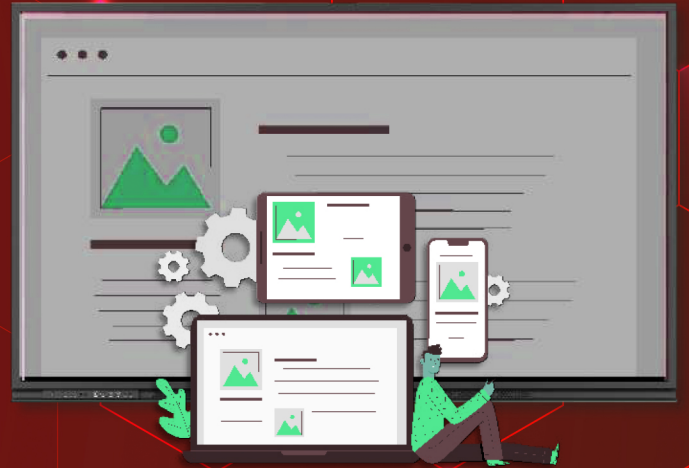
Built-in Wi-Fi



Connectivity



Security



## OS Compatibility

Android 11



Windows



## An Immersive Video & Audio Experience

4K Camera



Speaker



Specification			
Panel	Panel Size	65", 75", 86"	
	Response Time	4ms	
	Visual Ratio	16:9	
	Panel Type	IPS Panel	
	Resolution	3840 (H) x 2160 (V)	
	Pixel pitch	0.372 x 0.372mm	
	Frequency	60Hz	
	Display Colors	1.07B (10bit)	
	Color Saturability	72%	
	Contrast Ratio (Type)	4000:1	
	Viewing Angle	178°(H/V)	
	Light source	DLED	
	Brightness	400cd/m2	
	Life Span	≥50000hrs	
	Audio-Video Parameters	Camera	48MP
Built-in Mic Array		6	
Speaker		Soundtrack	2.0
		Power	2 x 20W
Touch Specifications		Non-contact infrared sensing technology	
Touch Parameters	Support Systems	Windows10/Windows8/Windows7/ Windows XP/Android/Linux/Mac OS X /Chrome	
	Touch Points	20 Points Touch	
	Min. Identifier	2mm	
	Input mode	Opaque object (finger, pen, etc)	
	Response time	≤10ms	
	Touch depth	±1mm	
	Writing height	≤3mm	
	Writing display	Single Stylus pen two-color	
	Output co-ordinates	32767 (W) x 32767(D)	
System	System Version	Android 11.0	
	CPU	Quad Core A55 2.1 GHz	
	GPU	Mali G52MP2	
	RAM	4GB/8GB (Optional) System Memory	
	ROM	32GB/128GB (Optional) System Storage	



# PRODUCT SPECIFICATIONS

# SV ULTRA SERIES

<b>Wireless</b>	Bluetooth	Version	5.0
		Working Frequency	2.5GHz
		Working Distance	0~10m
	Wi-Fi	Version	802.11ac/b/g/n/a/ax
		Working Frequency	2.4GHz/5G
		Working Distance	Upto 10 meters
<b>Rear I/O Interface</b>	HDMI IN	2	
	USB 2.0	1	
	USB 3.0	2	
	USB Touch Port	1	
	Audio IN	1	
	Line OUT	1	
	Optical OUT	1	
	Rs232	1	
	LAN RJ45 OUT	1	
	LAN RJ45 IN	1	
<b>Front Interface</b>	USB3.0	2	
	Touch USB	1	
	HDMI I	1	
	Type-C	1	
<b>Power</b>	Voltage	100-240V~50/60Hz	4A
	Max. power consumption	280W/ 390W/450W	
	Standby power consumption	≤0.5W	
<b>Environment</b>	Working temperature	0°C~40°C	
	Working humidity	10%~90%RH	
	Storage temperature	-20°C~60°C	
	Storage humidity	10%~90%RH	
<b>OPS</b>	OPS	Optional	

\*Remark: Due to continuous product development, the specifications may change without prior intimation.