



TIMBERLAKE TIMES

Timberlake Ranch Landowners Association

Spring 2025

Photo: Rose Carlson on her horse, Tom

The President's Corner

Mary Ann Armijo, TRLA President

Another winter has flown by! We didn't get the snow we hoped for, so please be cautious and observe the burn bans that are currently in place to protect our forest.

Board elections this year will have an online voting option. To make sure we have your correct email address, please verify it by sending an email [HERE](#). Your board has been busy with a lot of new property owners. We would like to welcome them and let them know we are all here to help.

The CC&R Committee has been working hard to review and submit suggestions for change, and the Architecture Committee also busy approving plans for a busy spring and summer. Our Accounts Receivables are looking good, with VP Diana and Secretary Craig Johnson doing a great job. The efforts to address the unpaved "no-man's land" portion of Canyon Road continue. Our goal is to get the land transferred to Cibola County, who would then chip-seal it.

I would like to thank the board and committee members for putting in lots of time and work for this community. Please let us know what we can help you with. Hoping for a safe and happy Spring.

Sincerely,
Mary Ann Armijo

TRLA BOARD MEMBERS NEEDED!

Do you have a desire to be involved in your community and help make Timberlake the best it can be?

If you said “Yes” to this question, please let the Nominating Committee Chair, Craig Johnson, know of your interest. Contact information for Craig: email trlasecretary@timberlakeranchnm.com.

There are three (3) open board positions for which you may apply. The term for the positions runs from May 2025 to May 2028.

Per 2.5.1 of the Policy and Procedure Manual, TRLA Board of Directors Applicants Qualifications Required:

- ✓ Member in Good Standing
- ✓ Ability to communicate through email/internet and respond in a timely manner
- ✓ Familiarity with MS Word and Excel preferred
- ✓ Actively and objectively participate in decision making
- ✓ Be willing to chair a Board Committee and other activities as necessary

Applicants will please write a few paragraphs addressing their reasons for wanting to be a Board Member. To help focus your comments, you may consider how you can make a difference in TRLA. The vision of TRLA is to protect and enhance the value and enjoyment of Timberlake Ranch and to foster community spirit and stewardship of the environment.

In addition, a Bio Statement and picture of yourself will also be needed. Your Bio Statement might include personal history as a Timberlake Landowner, personal thoughts on goals and objectives that promote the betterment of TRLA, and how your attributes can help achieve them.

The voter packet, which is mailed out by May 1, will contain the BIO Statements from all candidates to help Landowners determine how they will cast their vote. REMEMBER:

All interested candidates, please submit your reason for wanting to be a Board Member, your bio statement and photo **on or before April 15** to Craig Johnson, trlasecretary@timberlakeranchnm.com.

The Annual Meeting is scheduled for Saturday, May 24, 2025.

Timberlake Ranch Volunteers



Hello Timberlake!

The Timberlake Neighborhood Team (Volunteer Group) is anxiously looking forward to the Summer of 2025! This will be the second year of events sponsored by the new Timberlake Volunteer Group!

We hope to provide a summer's worth of fun events for all who wish to participate.

We will of course be keeping in line with the past and repeating many of the successful gatherings that we presented last year. Additionally, we will be trying some new and different ideas—many of which were suggested by Volunteers last year. **And we are looking for suggestions from all of you.**

Please keep in mind that the Volunteer Group gets its name and its ability to accomplish these events—from the VOLUNTEERS! As always, we welcome all who are willing to constructively help us achieve the tasks needed to execute these events! So, if you've been thinking of helping out—but it just hasn't worked out yet—we'd love to see your smiling face donating your time and efforts to make our Community Events happen!

Many members of the Timberlake community are not aware of where the funding comes from for our events. It's those amazing donations that keep us going! Everybody should be happy to know that even though we started 2024 with a limited budget, the money donated at the events allowed us to close last year in the **GREEN!**

All additional events that are sponsored by the Volunteer Group are funded by, planned and executed by the Leader and Volunteers of the Volunteer Group. This is why there are "Donation Jars" at every event. Thankfully, donations (both in the form of \$\$ and items for the Silent Auction) provided surplus funds last year so that the Volunteer Group will have money to purchase supplies for this year's events! Our group relies heavily on the time and efforts of the Volunteers in our community to make it all happen.

The Board of Directors of our Timberlake community thankfully provides the funding for the Annual Meeting BBQ in May. The Volunteer group uses those funds to provide food and drink for all who attend. We are excited about our planned Summer 2025 Events! We are working on an Events Calendar - and will soon publish that on the TRLA website for the benefit of the community members.

Teresa Springer

(Terry Haynes on Facebook)

timberlakeneighborhoodteam@yahoo.com

or by call 602-614-0695

What's that song? Merlin Bird ID can tell you.



If you hear a bird but can't see it, use Merlin Bird ID to record what you're hearing. It shows real-time identification based on species likely to be in your area. Great at capturing songs and calls both near and far.

These birds were all recorded in Timberlake.

 Cliff Swallow	 Western Bluebird	 Hermit Thrush	 Rufous Hummingbird	 Bullock's Oriole
 Barn Swallow	 Common Raven	 Dark-eyed Junco	 Osprey	 White-breasted Nuthatch
 White-throated Swift	 American Robin	 House Finch	 Black-chinned Hummingbird	 Black-capped Chickadee
 Spotted Towhee	 Cassin's Kingbird	 Lesser Goldfinch	 Broad-tailed Hummingbird	 Mountain Chickadee
 Steller's Jay	 Say's Phoebe	 American Goldfinch	 Least Bittern	 Red-faced Warbler
 Pinyon Jay	 Western Wood-Pewee	 Song Sparrow	 Western Meadowlark	 Hairy Woodpecker
 Cedar Waxwing	 Cassin's Vireo	 Chipping Sparrow	 Black-headed Grosbeak	 Northern Flicker
 Mourning Dove	 Plumbeous Vireo	 Grace's Warbler	 Orange-crowned Warbler	 Ash-throated Flycatcher
 American Pipit	 Hepatic Tanager	 Yellow-rumped Warbler		

Meanwhile at the lake...

The bald eagles are nesting, and the pelicans (not pictured) have returned!

Photos by Frank Beissel, taken from a respectful distance with a Canon 6D Mark II.



If you have photos of the wildlife in Timberlake Ranch and would like to share, please do! Send your photos to the Timberlake Times newsletter editor at trlatimberlaketimes@gmail.com
Thank you!

Benefits of the Timberlake Trail:

By Greg Brookes, Timberlake resident and Timberlake Trail Lead

The trail is a significant asset to Timberlake. It increases the desirability of living here, and therefore indirectly increases our property values.

- ✓ Minimizes overall environmental impact to the forest by focusing traffic in one place
- ✓ Pruning along the trail is consistent with our Fire Mitigation Plan (lop and scatter)
- ✓ The trail is a minor fire-break
- ✓ Provides quick access for wildland firefighters to set up a significant fire break
- ✓ Fire mitigation benefits may help with insurance premiums (HOA and/or Homeowners)
- ✓ Provides a safe route to travel through the forest
- ✓ Greatly enhances access for emergency medical response
- ✓ Defines a walking path to stay within the access easements
- ✓ Provides an attractive route to avoid walking in the electrical easement



Hiking Safety Tip: Flash Flooding



Flash floods are a hazard to be aware of as you are hiking along the base of the bluffs. The trail crosses many arroyos, some of which receive large amounts of storm runoff all at once (a flash flood). If you're headed out to hike, keep an eye on the weather. If rain is imminent, it's time to head home for the day. Stay safe out there!

Understanding our Access Easements

By Greg Brookes, Timberlake resident and Timberlake Trail Lead

One special thing we share at Timberlake is our HOA community forest (aka “the Commons”). It runs along the base of the bluffs and was set aside for our exclusive recreational use. **This forest is privately owned by TRLA and open to landowners and their guests only.** The planners of Timberlake provided access points for us to enter and exit the Commons.

Our access routes to the Commons are easements across private property. As landowners, each of you have the right to pass through these easements to get to the Commons forest. However, there are some things to keep in mind:

1. The access easements are for equestrians and hikers only.
2. ATV's and bicycles are **NOT** allowed.
3. When you pass through the easements, please stay on the trail and pass quietly. Respect the easement landowner's privacy at all times.
4. Detailed rules for the Commons are posted on the TRLA website.

POWER LINE EASEMENTS

The power line easements are completely separate from the trail and are exclusively for use by the Electric Company. Entering the electrical easements for any reason is trespassing. You are allowed to pass under the power lines, but only on the established trail.

Hiking Safety Tip:

Lightning



About 50 people per year are killed by lightning in the United States (probably a low estimate because many cases are never reported).

If you see thunderstorms on the horizon, immediately head down to lower elevation. Particularly during our summer monsoon season, get an early “alpine start” on your hike, and plan to be home by lunch if thunderstorms are in the forecast.

Timberlake Ranch Volunteer Fire Station 55



Captain Julie Farrell, Lt. Tom Abbott, Frank Beissel, Mark Reynolds, Roger Weinstein, Rick Farrell, Trish Anderson, Laurie Gurley.

Brush pile schedule

There was no brush pile burn this year, but it is still open! With the burn ban in place in both counties, it's the best place to take your brush.

Siren Testing

Timberlake Fire Department will test the Emergency Siren System on **April 1st, 2025 at 1pm-1:15pm**

Emergency Air Services

No one expects to be in a situation where an air ambulance is called but it does happen, **and out-of-pocket bills can be financially devastating.** There are two companies that serve Timberlake Ranch. If one is unavailable, the other is automatically dispatched. **Membership cost is low; joining both services will ensure you aren't hit with any more pain than you've already endured.**

PHI Medical

Gallup Med Flight



NEW EMERGENCY ALERT SYSTEMS FOR CIBOLA AND MCKINLEY COUNTIES!

Both McKinley and Cibola Counties have launched new emergency alert notification services to provide critical information quickly in a variety of situations such as hazardous material incidents, evacuations, significant road closures, missing persons, and more.

If you were previously signed up for CodeRed, you will need to sign up for the new notification service for your county.

Sign up here:

Cibola County



McKinley County



Local Events

The Old School Gallery, at Highway 53, hosts events throughout the year and is a great place to get out and meet your neighbors, enjoy live music including our very own Timberlake musicians, and work from local artists. For more information, please visit their website.

EMAAC
el morro area arts council



Please note that this is not an endorsement by TRLA, for informational purposes only. Info below courtesy of Pam Davis and EMAAC.



THE PLACE NAMES OF NEW MEXICO

By Robert Julyan

The Place Names of New Mexico is a guide to the state's geography and history. Exploring the significance of towns, mountains, rivers, canyons, counties, historical sites, and abandoned settlements, Robert Julyan will bring the past to life and show the ebb and flow of culture across the state.

Saturday, April 5th 2-4 pm Refreshments available

Robert Julyan is the author of several place names books and hiking guides. He is chair of the New Mexico Geographic Information Council and a member of the American Name Society.

OPEN MIC- Hosted by Wayne Ramm

Saturday, April 26, 7-9 pm

Refreshments available

Calling all poets, musicians, dancers, comics & actors!

\$5.00 Admission EMAAC Member performers get in free

Questions? Contact gail.ratko@emaacnm.org



Book Signing & Discussion INDIANS, COWBOYS AND UFOS

Stories of a Teacher on a Small Navajo Reservation
in 1970s New Mexico

By Andrew Shows **May 18th, 2-4pm**

"...surrounded by cowboys, Mormons, Mexicans and Zuni Indians was quite a shock to a boy from Baltimore. This was not the sleepy reservation experience I was expecting. It was so much more. It was a celebration of diversity, individualism and native tradition. I am still in awe of the vast array of experiences I was allowed, thanks to the opportunities presented by the Ramah Navajo people."

Andy and his wife Turza are full-time artists maintaining a home and studio/gallery in Albuquerque, with work in museums and galleries worldwide.

Old School Gallery Q2 Art Opening

Sunday, April 13th, 2-4 pm

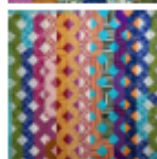
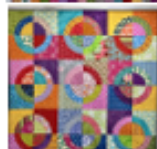
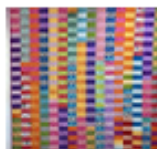
New works by local artists

And in the Artists' Quarter

"Making Do -The Sourdough Quilt Series II"
by Penny Hyde

"Called a Sourdough Quilt Series because each quilt has at least one fabric from another quilt. All the quilts are made from scraps and leftovers that would be cherished by our grandmothers, but often discarded as waste in our modern world. These quilts came from the scrap bins of 'Making Do'." Penny Hyde

Exhibition runs through July 6th



Mother's Day Tea & Piano Concert by Toni Austin-Allen

May 11, 2-4 pm



Toni will present a program ----mostly Gershwin, Cole Porter, some Bossa Nova, etc.-- early jazz, which is a purely American art form. It was invented in America, but of course fused with other styles once it traveled to other countries. For Toni, this early jazz is what she thinks of as something great in America. It is music that everyone will know and love.

Please gather for an afternoon of music and delicious refreshments to honor the mothers of our hearts and the world. Donations gratefully accepted.



Timberlake Ranch History

Love Letter to Ramah

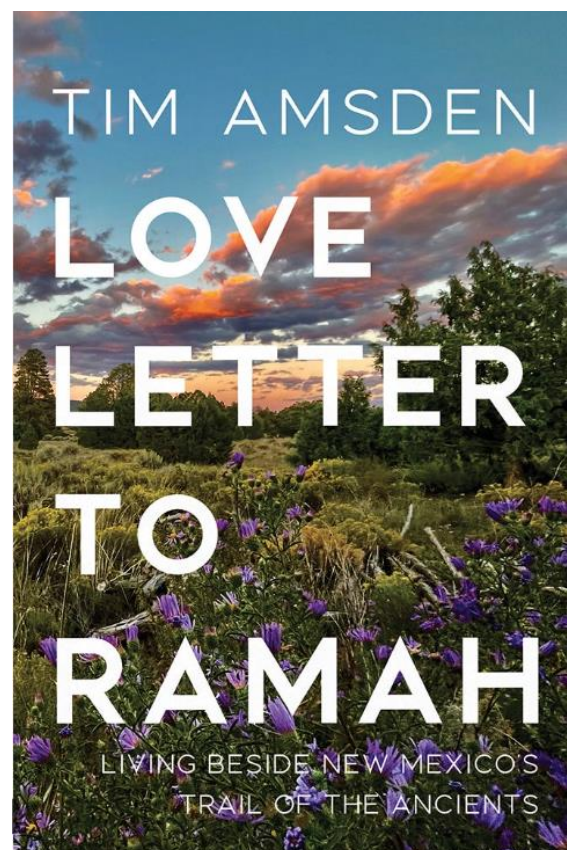
Tim Amsden

In 1998, Tim and Lucia Amsden decided to leave their familiar lives in metropolitan Kansas City and move to the Ramah Valley in Northwestern New Mexico where they lived for 20 years.

Love Letter to Ramah: Living Beside New Mexico's Trail of the Ancients, recounts their experiences there, nestled among an eclectic and diverse community of loving, earth-rooted people. It is also an evocation of the rich human and natural history permeating the area, and the importance, central to the traditional beliefs of Indigenous people, of living in concert with the living earth.

For more information or to order a copy, please visit

<https://www.unmpress.com/9780826366580/love-letter-to-ramah/>



TRLA Board Members

President – Mary Ann Armijo

Vice President – Diana Ramm

Secretary – Craig Johnson

Treasurer – Judi Murphy

Roads – Joe Martinez

Commons & Architecture – Don Parry

Communications – Frank Beissel

trlapresident@timberlakeranchnm.com

trlavicepresident@timberlakeranchnm.com

trlasecretary@timberlakeranchnm.com

trlatreasurer@timberlakeranchnm.com

trlaroads@timberlakeranchnm.com

trlacommons@timberlakeranchnm.com

trlacommunications@timberlakeranchnm.com

NOTICE:

TRLA – Lawsuit Information Case: D-1333-CV-2024-00349

It is public record that a litigation filing took place on December 19th, 2024, in the Cibola County District Court House between Adam Pehrson (Plaintiff) and Timberlake Ranch Landowners Association (Defendant) and Board of Directors (Defendant). The Plaintiff's Complaint: "Verified Complaint for Breach of Fiduciary Duties, Award for Attorney Fees, and Application for Injunction". We would ask that you refrain from making judgements on anyone at this time until more facts are known.

For information, please visit this link: <https://caselookup.nmcourts.gov/caselookup/app>

Timberlake Ranch

Ramah, NM

Updated 7/22/24

Evacuation Guidance

Ready, Set, Go



Get ready!

Create an evacuation plan that includes:

- ▲ A designated emergency meeting location outside the fire or hazard area. This is critical to determine who has safely evacuated from the affected area.
- ▲ An evacuation plan for pets and large animals such as horses and other livestock. Know where the safety zones are. The burn pile at the Ranch House, and the Mystic Bluffs landing strip are designated safety zones.
- ▲ A Family Communication Plan that designates an out-of- area friend or relative as a point of contact to act as a single source of communication among family members in case of separation.
- ▲ Sign up for Emergency Notifications:

McKinley County – Everbridge

<https://member.everbridge.net/398027504222402/new>

Cibola County Code Red

<https://www.onsolve.com/landing/sign-up-for-coded-red-emergency-alerts/>

Prepare your family...

Be Prepared:

- ▲ Have fire extinguishers on hand and train your family how to use them. Check the gauge to ensure it is in the **green**.
- ▲ Keep your gas tank at least half full at all times.
- ▲ Assemble a Go Bag (emergency supply kit) for your family and pets. Click link below: <https://www.ready.gov/kit>
- ▲ Keep a list of emergency contact numbers available.
- ▲ Post your address by your driveway so it's clearly visible.
- ▲ Keep a Go Bag in your car in case you cannot get to your home.
- ▲ Ensure that your family knows where your gas, electric, and water shut-off controls are located and how to safely shut them down in an emergency.

Our household safety plan (complete before an emergency incident):

MY ZONE IS:

Our address _____ Phone _____

In the event of an evacuation, we will meet at _____

Local contact (neighbor/relative): In the event that roads are closed, our local contact to care for children and pets:

Name _____ Phone _____

Out of area contact/phone _____ School phone _____

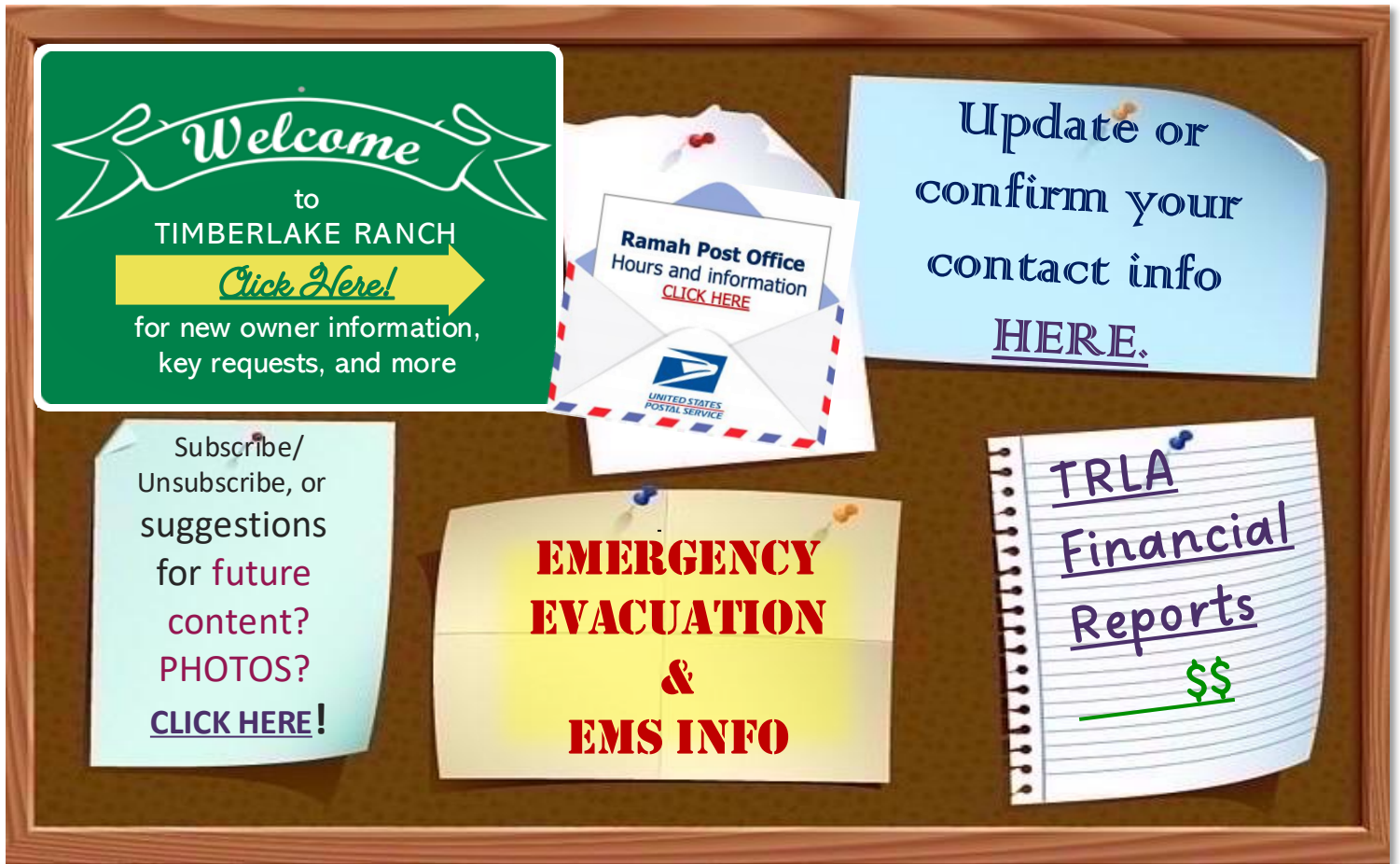
Other important contacts _____

We have neighbors who may need help (persons with disabilities or persons with access and functional needs) _____

Fire station 55: (505)783-4221

Metro Dispatch: Call 911 Dispatch to Station 55

BULLETIN BOARD



Don't forget...

Correct mailing address is critical for property taxes!

After three years of nonpayment of property taxes, the NM Delinquent Property Tax Bureau takes possession of the property and auctions are scheduled by county. **There is no recourse for the landowner.**

Both McKinley County and Cibola County auctions have resumed after a long hiatus due to COVID. To view the list of properties scheduled for auction, use this link:
<https://www.tax.newmexico.gov/businesses/property-tax-overview/delinquent-property-tax-auctions>

Cibola County
Treasurer's Office:
CLICK HERE

McKinley County
Treasurer's Office:
CLICK HERE