



# **TIMBERLAKE RANCH LANDOWNERS' ASSOCIATION**

**ANNUAL MEETING**

**MAY 28, 2011**

**2010 – 2011 FISCAL YEAR REPORT**



## **Board of Directors**

**Gary Blum  
Eileen Domer  
Don Parry  
Linda Pedersen  
Dale Spencer  
Jerry Toellner  
Mary Jo Wallen**



## DEMOGRAPHICS OF TIMBERLAKE RANCH AND LANDOWNERS

Timberlake Ranch covers approximately 7000 acres in both Cibola and McKinley County. It is nestled in a valley surrounded by the Cibola National Forest (342,000 acres). There are five subdivisions: Cloh Chin Toh, Timberlake (Cibola) Unit 1, Timberlake (Cibola) Unit 2, McKinley Units 1---10, and Timberlake South for a total of 743 lots varying in size from 5 – 14 acres.

### Number of Lots according to Subdivision:

Cloh Chin Toh: 93 (CCT 74 Common Land)

Cibola Unit 1: 65

Cibola Unit 2: 73 Timberlake

South: 31

McKinley Unit 1: 52

Unit 2: 42

Unit 3: 46

Unit 4: 54

Unit 5: 45

Unit 6: 48

Unit 7: 51 (Includes Lot given to McKinley Co. for the Volunteer Fire Dept.)

Unit 8: 61

Unit 9: 54

Unit 10: 27

**TRLA Common Land:** There are five parcels of land in Cibola Country for a total of 333 acres. This includes the Horse Pasture, 100' narrow strip running north of it, Field of Stream, and Lot 74 in Cloh Chin Toh Subdivision along with the TCC Ranch House and surrounding acreage. In McKinley County there are 9 parcels totaling 894 acres. This includes land on north and south of the lake, a strip of land going north and south on which the bathhouse sits, and the area along the cliffs to the west.

As of May 2011, Timberlake landowners (570) reside in 29 states and two foreign countries (Canada and Switzerland.) The top three states landowners come from are Arizona (42%), followed by New Mexico (35%), and then California (9%). There are 141 homes in Timberlake. Of these, 2 homes are under construction, 59 are full---time residents, 26 are owned by part---time residents, and 54 are considered recreational. Included in the recreational group are 8 homes that are vacant or for sale or in the foreclosure process.

## Board of Directors Report

Board Meetings were held in May (after the Annual meeting), July, Aug. October, February, March and April. In addition to all of the projects reported elsewhere in this report, the following tasks were achieved:

1. Redesign of TRLA Job Description and Application form for Ranch Hand.
2. Revised Key Policy.
3. Updated Policy & Procedure Manual for Board of Directors.
4. Prepared a Checklist of Board of Directors' Duties by month
5. Completed two surveys (1) Expanded Member Services: Internet/Antenna and (2) Horse Pasture/Common Area in CCT usage.
6. Prepared a Power Point presentation to the Northwest Regional Planning Organization Technical Committee Meeting concerning coordination and road improvements with McKinley Co., BIA, and Cibola County.
7. Drafted a letter to NM legislative representatives (included in your Annual Meeting packet) requesting their assistance in upgrading 48A/aka157 and BIA from a recreational road to a Class C road. **Please send these letters or draft your own, so our voice can be heard.**
8. Requested installation of additional cluster boxes from the Ramah Post Office (approved, but installation date has not been established by the Post Office).
9. Added Mark Bundren, Game & Fish Warden, to our e---mail alert system so he can help monitor suspicious vehicles and animal concerns while he is on the Ranch.
10. Assisted The Timberlake Neighborhood Volunteer Group with planning and implementing their projects/events (ie: Yard Sale, Ice Cream Social and Labor Day Barbecue/Silent Auction. The Volunteer Group purchased a new stove for the Ranch House, permanent shelving and a spinkeeper (for audio/videos) for the Library and finished painting the fence at the lake.



### Areas under Board Investigation:

1. Common Land: Acquisition of Deeds, Title searches, and accompanying surveying needs.
2. Safe and secure storage of equipment and TRLA legal documents.
3. Entrance to TCC Ranch House for landowners with special needs.
4. 3---Year Budget

**NOTE:** There will be three openings next year on the Board and we hope that these positions can be filled by landowners willing to devote the necessary time required to keep TRLA running smoothly. If you are interested, start thinking about it. We need more landowners who want to be involved in the operations of TRLA. It would be appreciated if you have ideas for future consideration that you submit them in writing to the Board.

**BUDGET REPORT TRLA ANNUAL MEETING Fiscal Year 2010-2011**  
**May 28, 2011**

Total income for July to April = \$167,824.78.  
Total expenses for July to April = \$124,080.75  
Monies needed for May and June 2011 about \$7,000.00  
Possible carry forward to 2011-2012 = \$36,744.00

We stayed well within budget on all line items except for the Building maintenance and repair. On this particular item we were over by \$4,852.00.

**Budget for 2011-2012:**

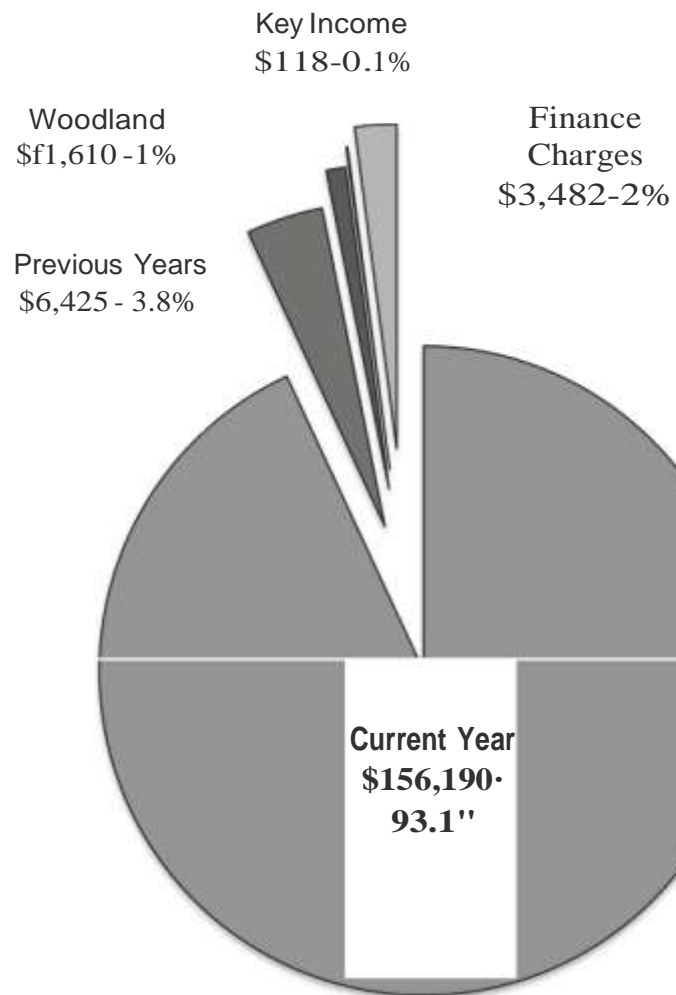
- The legal line item was increased to cover the anticipated cost of the foreclosures and the Title searches that will be required to update the deeds and boundaries of the Common Land.
- We increased the hourly rate of pay to \$11.00/hr from \$10.00 for the Ranch Hand and Janitorial person. The Bookkeeper's salary was increased to \$700.00 plus taxes/month from \$600/month plus tax (First increase in several years).
- We do not anticipate any major heavy equipment expenses. The line item for fuel has been decreased from \$9,500.00 to \$6,000.00/yr. While the cost per gallon of fuel has increased our average cost for four years is \$4,820.00/year.
- The line item for utilities was increased from \$2,150/year to \$3,100/year.
- There are 23 months remaining on the loan for the Ford 550.
- The line item for gravel has been decreased from \$60,000 to \$45,000.

Collections this year were less than FY 2009-2010. Two months before the end of the year we have 8.6% that still owe the current year dues. Compare to 6.5% at the end for last fiscal year. A total of six invoices were sent to the Landowners who are delinquent. Three lots have been sent to the Lawyer for foreclosure. Eleven (11) more liens were placed; there are now a total of 26 liens in place. Three liens (3) have been released.

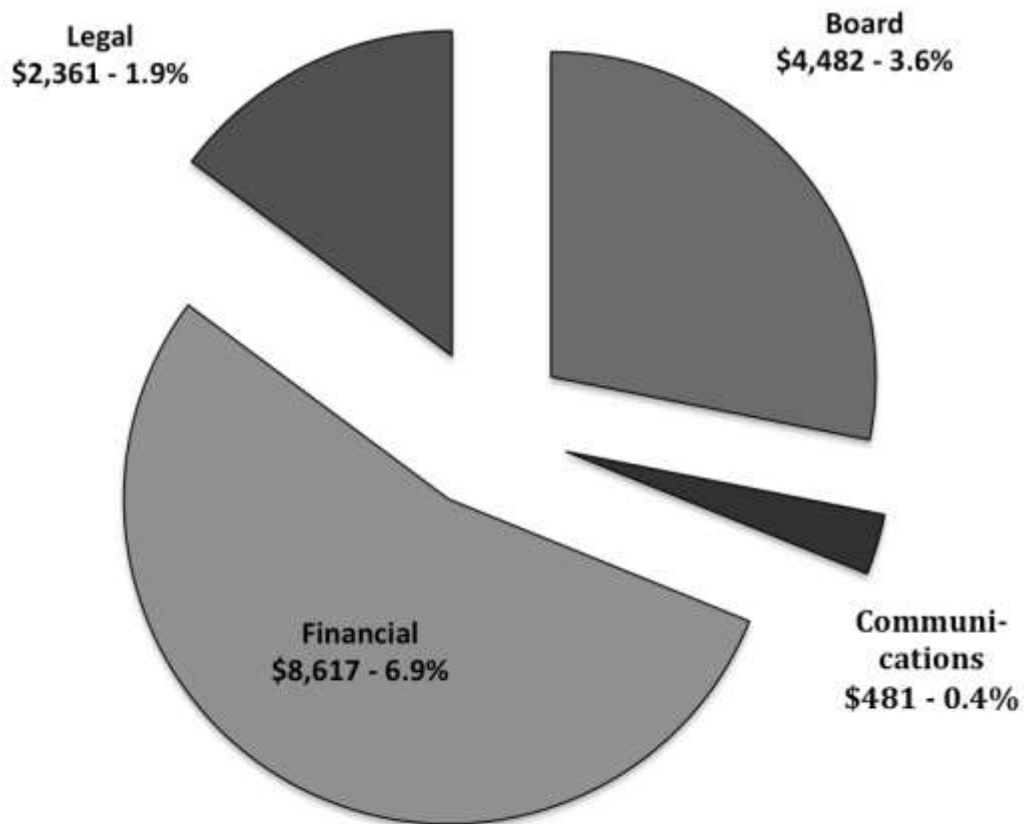
**BUDGET GOALS FOR FISCAL YEAR 2011-2012**

- Keep a budget with financial flexibility - e.g. the \$10,000.00 contingency fund and reserve account to provide capital for the extra expenses.
- Improve record keeping anticipating future budgetary increases.
- Maintain a reasonable reserve for Capital expenses and replacement cost.
- Educate landowners on how Association dues are collected by publishing the financial policy and procedure on the web site.

TRLAINCOME  
JULY 2010- APRIL 2011  
\$167,825

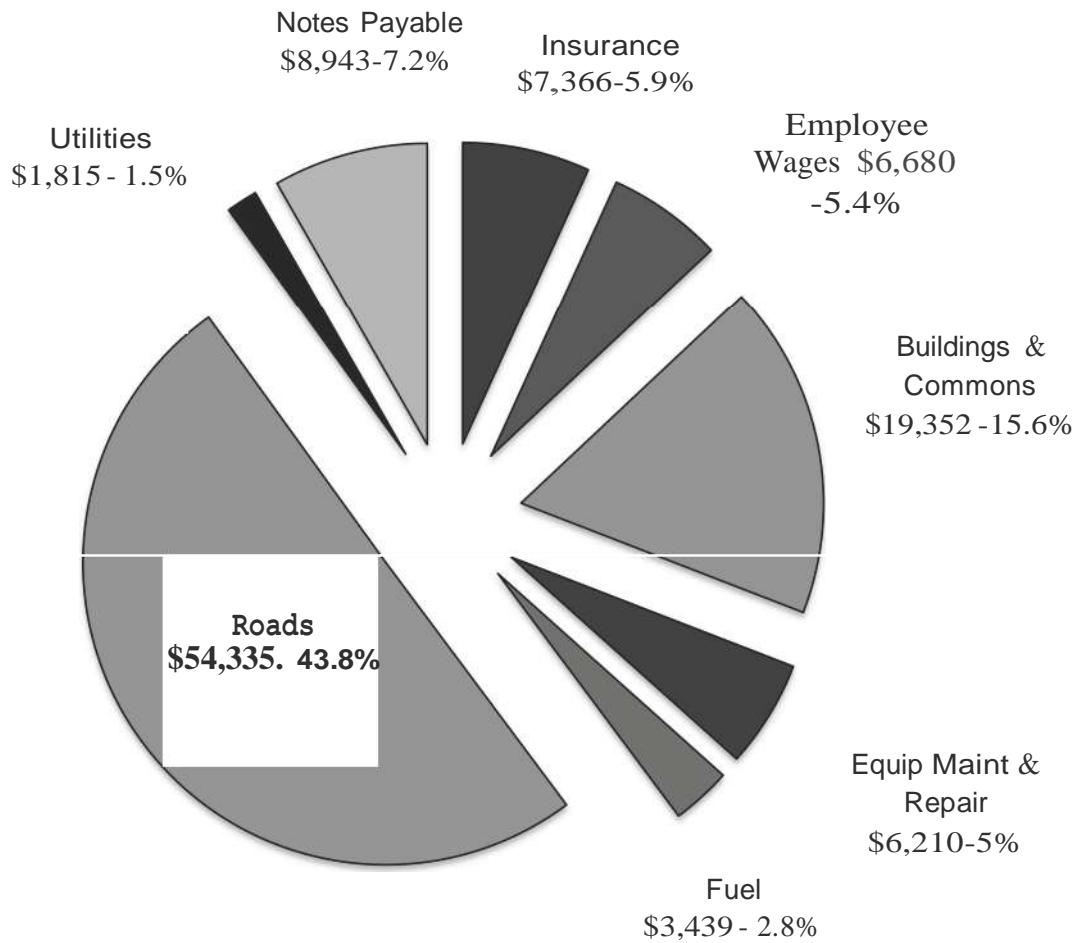


**ADMINISTRATIVE EXPENSES**  
**JULY 2010 - APRIL 2011**  
**\$15,941 - 12.8% OF TOTAL EXPENSES**



<b><u>Board</u></b>	<b><u>Communications</u></b>	<b><u>Financial</u></b>	<b><u>Legal</u></b>
Annual Meeting Insurance Office Supplies Postage Subscriptions Mileage	Newsletter Website	Accounting Audit Taxes	Lawyers Liens

RANCH OPERATIONS EXPENSES  
JULY 2010- APRIL 2011  
\$108,140- 87.2% OF TOTAL EXPENSES



**TRLA INFLOW-OUTFLOW REPORT  
FISCAL YEAR 2010-2011**

	JUL 2010	AUG 2010	SEP 2010	OCT 2010	NOV 2010	DEC 2010	JAN 2011	FEB 2011	MAR 2011	ARP 2011	FY 10-11 YTD	FY 10-11 BUDGET
<b>5009</b>	<b>INFLOWS</b>											
Assessment Fees												
current yr collections	89,684.14	13,406.34	4,132.89	7,189.86	2,118.92	1,309.17	29,274.21	4,683.58	1,816.96	2,574.18	156,190.25	158,636.00
previous yrs collections	267.28	1,903.84	247.43	744.20	323.84	200.96	1,446.87	1,208.89	11.42	69.80	6,424.53	
5011 Assessment fee Woodland	1,610.00										1,610.00	
5915 Key Income	67.00	31.00	20.00								118.00	
5920 Donations											-	
5930 Finance Charges	238.00	253.00	475.00	427.00	370.00	335.00	337.00	303.00	368.00	376.00	3,482.00	
<b>TOTAL INFLOWS</b>	<b>91,866.42</b>	<b>15,594.18</b>	<b>4,875.32</b>	<b>8,361.06</b>	<b>2,812.76</b>	<b>1,845.13</b>	<b>31,058.08</b>	<b>6,195.47</b>	<b>2,196.38</b>	<b>3,019.98</b>	<b>167,824.78</b>	<b>158,636.00</b>
<b>6050</b>	<b>Board</b>											
Annual Meeting	87.00		(16.00)	97.00					167.00		335.00	1,250.00
6103 Insurance-Directors & Officers				1,957.00							1,957.00	2,000.00
6120 Meetings and socials											-	-
6140 Office Supplies & Exp	471.00	200.00	216.00		(38.00)	(241.00)	145.00	97.00			850.00	2,500.00
6160 Postage	4.00	7.00	27.00	9.00	29.00		810.00	18.00	10.00	386.00	1,300.00	2,000.00
6215 Subscriptions and Dues	10.00										10.00	10.00
6290 Mileage - Board Members			30.00								30.00	200.00
<b>TOTAL</b>	<b>572.00</b>	<b>207.00</b>	<b>257.00</b>	<b>2,063.00</b>	<b>(9.00)</b>	<b>(241.00)</b>	<b>955.00</b>	<b>115.00</b>	<b>177.00</b>	<b>386.00</b>	<b>4,482.00</b>	<b>7,960.00</b>
<b>6130</b>	<b>Communcations</b>											
Newsletter				132.00			155.00		194.00		481.00	1,000.00
6170 Website								-			-	-
<b>TOTAL</b>				<b>132.00</b>	<b>-</b>	<b>-</b>	<b>155.00</b>	<b>-</b>	<b>194.00</b>	<b>-</b>	<b>481.00</b>	<b>1,000.00</b>
<b>6010</b>	<b>Financial</b>											
Accounting	1,301.00		1,008.00	644.00	643.00	893.00	643.00	643.00	643.00	1,287.00	7,705.00	8,300.00
6020 Audit											-	-
6250 Taxes - Real Estate					817.00						817.00	1,000.00
6260 Taxes - Income			95.00								95.00	2,500.00
<b>TOTAL</b>	<b>1,301.00</b>	<b>-</b>	<b>1,103.00</b>	<b>644.00</b>	<b>1,460.00</b>	<b>893.00</b>	<b>643.00</b>	<b>643.00</b>	<b>643.00</b>	<b>1,287.00</b>	<b>8,617.00</b>	<b>11,800.00</b>
<b>6110</b>	<b>Legal</b>											
Legal												
6110.01 Legal - Casutt	-		-	409.00				164.00	253.00	1,598.00	2,424.00	13,000.00
6111 Lien & Notary Fees	9.00		9.00					(103.00)		22.00	(63.00)	250.00
<b>TOTAL</b>	<b>9.00</b>	<b>-</b>	<b>9.00</b>	<b>409.00</b>	<b>-</b>	<b>-</b>	<b>-</b>	<b>61.00</b>	<b>253.00</b>	<b>1,620.00</b>	<b>2,361.00</b>	<b>13,250.00</b>
<b>6090</b>	<b>RANCH OPERATIONS</b>											
<b>Insurance</b>												
Insurance - Workers Comp		188.00	113.00	99.00	113.00	113.00	112.00				738.00	800.00
6100 Insurance - Liability & Bond		-	2,662.00	676.00	676.00	676.00	676.00		586.00	676.00	6,628.00	8,500.00
<b>TOTAL</b>	<b>-</b>	<b>188.00</b>	<b>2,775.00</b>	<b>775.00</b>	<b>789.00</b>	<b>789.00</b>	<b>788.00</b>	<b>-</b>	<b>586.00</b>	<b>676.00</b>	<b>7,366.00</b>	<b>9,300.00</b>
<b>6310</b>	<b>Employee Wages &amp; Taxes</b>											
<b>Wages</b>												
6310.01 Grader Time (\$10,000.00)	623.00			630.00	293.00	22.00		180.00			1,748.00	10,000.00
6310.02 Brushhog Time											-	-
6310.03 Snowplow (\$2,600)							210.00	48.00			258.00	2,600.00
6310.06 Sanitation & Janitorial (W-9) (\$1,400)	190.00		340.00	160.00		100.00				110.00	900.00	1,400.00
6310.07 Ranch Hand (\$5,000)			350.00	1,055.00	320.00	389.00	255.00	28.00	253.00	611.00	3,261.00	5,000.00
<b>Taxes</b>												
6220 Taxes - FICA	48.00		27.00	129.00	47.00	31.00	30.00	20.00	19.00	47.00	398.00	1,453.50
6230 Taxes - Federal Unemployment	5.00		3.00	13.00	5.00	3.00	3.00	2.00	2.00	5.00	41.00	152.00
6240 Taxes - State Unemployment	7.00		4.00	20.00	7.00	5.00	3.00	2.00	2.00	4.00	54.00	456.00
6300 Mileage - Foreman & Employees	-		20.00	-							20.00	-
<b>TOTAL</b>	<b>873.00</b>	<b>-</b>	<b>744.00</b>	<b>2,007.00</b>	<b>672.00</b>	<b>550.00</b>	<b>501.00</b>	<b>280.00</b>	<b>276.00</b>	<b>777.00</b>	<b>6,680.00</b>	<b>21,061.50</b>
<b>6150</b>	<b>Buildings &amp; Commons</b>											
Operating Supplies	70.00		76.00	156.00					9.00		311.00	300.00
6180 Building Maintenance & Repairs			-	299.00					128.00	55.00	482.00	-
6180.01 Ranch House	16.00	5,072.00	4,529.00	1,108.00	40.00		314.00		219.00	58.00	11,356.00	11,000.00
6180.02 Bath House			4.00	27.00					44.00	5,374.00	5,449.00	2,000.00
6181 Common Land Maintenance/Repairs	97.00	194.00	49.00	1,098.00	205.00				4.00		1,647.00	1,000.00



**TRLA INFLOW-OUTFLOW REPORT  
FISCAL YEAR 2010-2011**

		JUL 2010	AUG 2010	SEP 2010	OCT 2010	NOV 2010	DEC 2010	JAN 2011	FEB 2011	MAR 2011	ARP 2011	FY 10-11 YTD	FY 10-11 BUDGET
6200	Sanitation & Janitorial Supplies	65.00		12.00	30.00							107.00	200.00
	<b>TOTAL</b>	<b>248.00</b>	<b>5,266.00</b>	<b>4,670.00</b>	<b>2,718.00</b>	<b>245.00</b>	<b>-</b>	<b>314.00</b>	<b>-</b>	<b>404.00</b>	<b>5,487.00</b>	<b>19,352.00</b>	<b>14,500.00</b>
	<b>Equipment Maint. &amp; Repairs</b>												
6070.01	Dump Truck	156.00		938.00	-	797.00						1,891.00	300.00
6070.02	Grader				-	620.00	42.00	383.00	76.00			1,121.00	3,800.00
6070.03	Pick Up	400.00			87.00	1,347.00		56.00		163.00		2,053.00	400.00
6070.04	Tractor	20.00		4.00	366.00	631.00			37.00			1,058.00	2,300.00
6070.05	Other			-	87.00							87.00	200.00
	<b>TOTAL</b>	<b>576.00</b>	<b>-</b>	<b>942.00</b>	<b>540.00</b>	<b>3,395.00</b>	<b>42.00</b>	<b>439.00</b>	<b>113.00</b>	<b>163.00</b>		<b>6,210.00</b>	<b>7,000.00</b>
	<b>FUEL</b>												
6311.01	Gasoline (1,500.00)	101.00		167.00	68.00	253.00	263.00	163.00	68.00	59.00		1,142.00	1,500.00
6311.02	Dyed Diesel (8,000.00)	893.00		-					1,404.00			2,297.00	8,000.00
	<b>TOTAL</b>	<b>994.00</b>	<b>-</b>	<b>167.00</b>	<b>68.00</b>	<b>253.00</b>	<b>263.00</b>	<b>163.00</b>	<b>1,472.00</b>	<b>59.00</b>		<b>3,439.00</b>	<b>9,500.00</b>
	<b>ROADS</b>												
6190	Gravel	3,626.28	22,084.00	780.00	24,289.00	400.00	1,530.00					52,709.28	60,000.00
6190	Road Maintenance & Repairs	1,001.47	-	-	-	524.00		100.00				1,625.47	5,000.00
	<b>TOTAL</b>	<b>4,627.75</b>	<b>22,084.00</b>	<b>780.00</b>	<b>24,289.00</b>	<b>924.00</b>	<b>1,530.00</b>	<b>100.00</b>	<b>-</b>			<b>54,334.75</b>	<b>65,000.00</b>
	<b>UTILITIES</b>												
6270	Telephone		36.00	73.00	36.00		72.00	80.00	58.00		112.00	467.00	500.00
6280	Electric & Propane	211.00	52.00	239.00	124.00	74.00	279.00	78.00	111.00	120.00	60.00	1,348.00	1,650.00
	<b>TOTAL</b>	<b>211.00</b>	<b>88.00</b>	<b>312.00</b>	<b>160.00</b>	<b>74.00</b>	<b>351.00</b>	<b>158.00</b>	<b>169.00</b>	<b>120.00</b>	<b>172.00</b>	<b>1,815.00</b>	<b>2,150.00</b>
6315	<b>CONTINGENCY FUND</b>												<b>10,000.00</b>
	<b>NOTES PAYABLE</b>												
6105	Interest Expense	133.00	129.00	126.00	122.00	118.00	115.00	120.00	107.00	104.00	100.00	1,174.00	
2216	F550	760.00	764.00	768.00	771.00	775.00	779.00	782.00	786.00	790.00	794.00	7,769.00	10,720.00
	<b>TOTAL</b>	<b>893.00</b>	<b>893.00</b>	<b>894.00</b>	<b>893.00</b>	<b>893.00</b>	<b>894.00</b>	<b>902.00</b>	<b>893.00</b>	<b>894.00</b>	<b>894.00</b>	<b>8,943.00</b>	<b>10,720.00</b>
	<b>TOTAL OUTFLOWS</b>	<b>10,304.75</b>	<b>28,726.00</b>	<b>12,653.00</b>	<b>34,698.00</b>	<b>8,696.00</b>	<b>5,071.00</b>	<b>5,118.00</b>	<b>3,746.00</b>	<b>3,769.00</b>	<b>11,299.00</b>	<b>124,080.75</b>	<b>183,241.50</b>

Bank Accounts	9/20/10	10/20/10	11/21/10	1/15/11	2/14/11	3/15/11	4/13/11
Depost	93,538.58	90,742.18	61,421.06	53,818.37	62,441.05	60,153.04	77,143.52
Blue	3,290.01	7,470.02	8,429.64	17,255.92	23,593.83	29,636.01	36,019.52
Reward	1,519.63	1,519.63	1,519.73	1,519.83	1,519.88	1,519.93	1,520.03
Reserve	85,790.72	85,793.54	85,796.46	85,802.19	85,805.11	85,807.74	85,813.48
<b>TOTAL</b>	<b>184,138.94</b>	<b>185,525.37</b>	<b>157,166.89</b>	<b>158,396.31</b>	<b>173,359.87</b>	<b>177,116.72</b>	<b>200,496.55</b>

## Legal Report

TRLA retains the law firm of Cassutt, Hays & Friedman, P.A. in Santa Fe, New Mexico.

Beginning of Foreclosure process on 3 lots and legal opinions requested by Board of Directors as of May 1, 2011: \$2424



## Communications Report

### Website:

TRLA's website is hosted by trnews.info which is sponsored and maintained by Roger Irwin and Tim Amsden. David Skinner continues to volunteer his time to assist them by updating and maintaining the archiving of records for TRLA. The trnews.info website is nearing 57,000 hits (up 9,000 from a year ago) and TRLA 5100 (up 2100). We are indebted to these men for keeping landowners informed of facts that can affect lives and property.

### Timberlake Times Newsletter:

The newsletter was published in September 2010, November 2010, and March 2011. Again, Fran and Duane Barbano were instrumental in the layout, editing and additional informative articles. TRLA has been very fortunate to have had their expertise in this area.

Approximately 280 newsletters are printed, folded, taped, addressed, and stamped for each mailing. The newsletter is converted to a pdf file and electronically sent to 358 email addresses. This saves TRLA about \$150 each newsletter edition. Please let us know if we can use your email address.

### Timberlake and Rosie Alerts:

On occasion when there becomes a situation that impacts Timberlake immediately, e.g. lost and found pets, Bear/Mountain Lion alerts, suspicious behavior, etc., an electronic alert is sent to landowners in the Timberlake area. Landowners who wish to be included in this alert system need to notify Mary Jo Wallen or Linda Pedersen.

## Roads Report

Maintenance and Repair: July 2010--- April 2011 (FY2010---2011)

Grader John Deere 670B: Service x2, mount tire, tire patch, snow chains on and hydraulic hose.

Total: \$1,121.00

Dump truck: Registration, brake shoes rear, front seals, two tires and rim repair

Total: \$1891.00

Ford 550 Pick---up: tool box, shovel, signage, light bar purchase and installation, lumber, fire extinguisher, two chains tires and registration renewal.

Total: \$2053.00

Zetor Tractor: Tire service, switches, service and clutch/brake service.

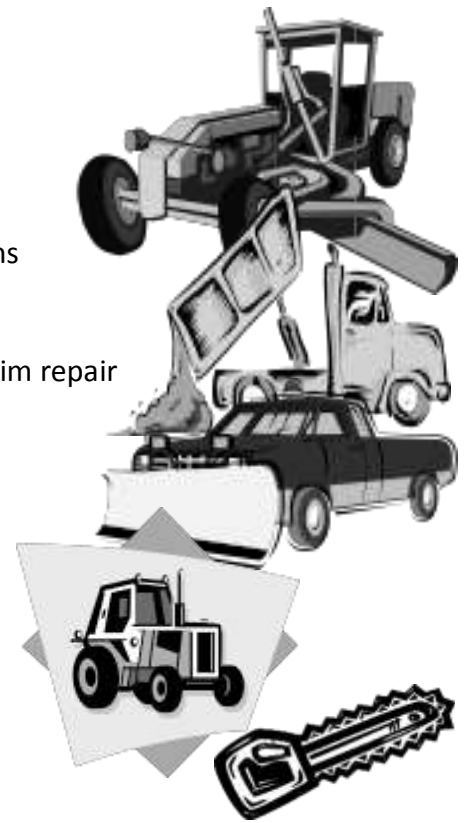
Total: \$1026.00

Other:

Stihl Chain saw: new chain, repair and sharpening. Total: \$87.00

Brush Hog: remove and replaced mower drive shaft. Total: \$31.94

TOTAL: \$6,210.00



Roads Repaired, upgraded and/or graveled: July 2010---April 2011 (FY 2010---2011)

- Bobcat (completion of repair from damage in Sept. '09)
- Pinetree (road widened over wash area)
- Sagebrush and Fox intersection
- North and South Lobo
- Blackbear
- Aspen Loop
- Pinon
- Culebra
- Elk
- Cottonwood
- Sunflower
- Buttonwood
- Copperweed
- Woodland
- Wolf and Lakeview



Gravel: 2,719.4 Tons

TOTAL: \$54,334.75

Snowplowing: Grader/Zetor/550 Pickup

TRLA Total hours: 54.75

(Does not include 4 hours by McKinley Co.)

Grading with Grader & Zetor:

253.5 hours plus 46.5 Volunteer hours

(Does not include 80 hours by McKinley and Cibola Co. on 48A and Timberlake Road)

Maintenance (tree trimming, general cleanup, brush hog, tires and chains, etc):

172.75 hours plus 7.5 hours of Volunteer hours

CORRECTION IN THE ROADS REPORT PUBLISHED IN THE MARCH, 2011 TIMBERLAKE TIMES

The total amount of gravel spread on Buttonwood, Sunflower, Copperweed and Wolf Roads in October 2010 was 1,250.64 tons and not 515.07 as previously reported. I apologize for the incorrect report and for any concerns this may have caused.

Eileen Domer, TRLA Treasurer



## COMMONS REPORT

The “Commons” refers to approximately 1200 acres of Timberlake land in McKinley County and Cibola County, upon which lies the TCC Ranch House, Bath House, south and north lake gate entrances and roads along shoreline, boat ramp and parking area on north side, and about 38 miles of side roads and easements.

The following improvements, repairs, and maintenance have been performed in FY 2010/2011.

### TCC Ranch House

Construction and installation of built---in shelving for both library rooms (joint effort with Timberlake Neighborhood Volunteers); installation of bathroom fixtures and hot water heater following floor tiling; installation of kitchen cabinets, commercial stainless steel sink and hand sink along with new stove donated by Timberlake Neighborhood Volunteers; installation of new kitchen laminate flooring; dead bolts installed to replace padlocks.; cedar fencing constructed to prevent driving over septic system (recycled cedar posts taken from lake bed) ; placement of donated TCC Ranch House sign; and purchase of misc. items for kitchen and Historical Room. Volunteer Hours: 477

Total Cost: \$11,356

### Bath House

Plumbing repair and upgrading (Well Room included) to meet code in April and installation of new furnace and duct work, misc. supplies.

Cost: \$5,374

### Well and Well Room

Lines drained and winterized on October 26, 2010. Two 400 watt Econo---heaters and thermostats (\$300) installed to protect plumbing and paint over winter. Startup and disinfection procedure performed on April 11, 2011 following plumbing repair in Bath House. Volunteer hours 14

### Brush Pile

Timberlake Volunteer Fire Dept. burned on Jan. 6 and 13, 2011. (6 hours) Brush Pile Management (5 Volunteer hours)

### North and South Lake Gates and Fences

Repair of broken boards and repainting of entire fence line.

Cost: \$290.55

Volunteer Hours 44



## Equestrian Report

A detailed Equestrian Easement Guidelines/Etiquette document was prepared and given to all TRLA horse owners. Several of the questionable easements were verified with the appropriate landowners including the horse pasture located in Cloh Chin Toh. As a result, temporary orange flags were put in place by the Aspen Loop cul de sac easement. Stone cairns should be put in place by the end of June, 2011. Repairs to existing trailhead signs will also be made during the summer of 2011.

If anyone would like a copy or more information, please contact Mary Jo Wallen at [mrsdw19@aol.com](mailto:mrsdw19@aol.com) or 783---4207.



## Architectural and Maintenance Report

- Building Plans submitted and approved:  
Garage (1) Home (1)
- No. of covenant violations closed: 10
- No. of covenant violations to be closed by the end of the summer or on a plan: 4
- Serious covenant violations with potential legal action: 1
- Potential covenant violations: 7

## VOLUNTEERS

To those who have contributed to the Timberlake Community and TRLA with time and energy:



Amsden, Tim and Lucia  
Antosh, Rick and Pam  
Barbano, Duane and Fran  
Blum, Gary and Sally Boller,  
Dan and Kathy Burnam,  
Allen and Pat Brunner, Ray  
and Karin Dobbs, George  
and Nancy Domer, Tim and  
Eileen  
Dougherty, John and Anderson, Michelle  
Duncan, Barb  
Ellett, John  
Garcia, Jo  
Gray, Herb  
Farrell, Julie  
Haverstick, Charley and Judy

Henderson, Mike and Shirl  
Hutton, Harry/Lawrence, Harriet  
Irwin, Roger  
Kangas, Bill and Carren  
Kelly, Barb  
Kirchner, Bill and Jo  
Knowles, Dick and Claire  
Lambert, Frank and Barbara  
Mansperger, Larry and Jack  
McGuire, Judy  
Merritt, Tom and Darlene Montoya,  
Danny /Pedersen, Linda Parry, Don  
and Joleen  
Ramm, Wayne and Nancy  
Shoppe, Dave and Linda  
Skinner, David  
Spencer, Dale  
St. Charles, Jeremy  
Toellner, Jerry and Judy  
Wallen, Dick and Mary Jo  
Wills, Steve and Nancy  
Wolford, Bill and Pat  
Zwerg, Jim and Carrie

...And all those who wish to remain anonymous

## Timberlake Volunteer Fire Department



Beoff, Justin  
Ferrill, Lee  
Fisher, Susan  
Hollingsworth, Kerry  
Kalista, Cherie and Christina  
Montoya, Danny  
Pettigrove, Frieda  
Sanders, Billy  
St. Charles, Dan  
Wilson, Andy and Avery  
Wolford, Bill

Volunteers are unpaid not because they are worthless, but because they are priceless. We hope that no one has been left out as we so appreciate all of you.