

Part 1: CORAL REEF FIN FISH: as per Schedule 7 Part 2 of the *Fisheries (General) Regulation 2019* (Qld)

* combined possession limit of 20 in total per competitor for the duration of competition

Cods and Groupers Combined possession limit of 5 in total

Maori Cod (45cm)

Epinephelus undulatostratus



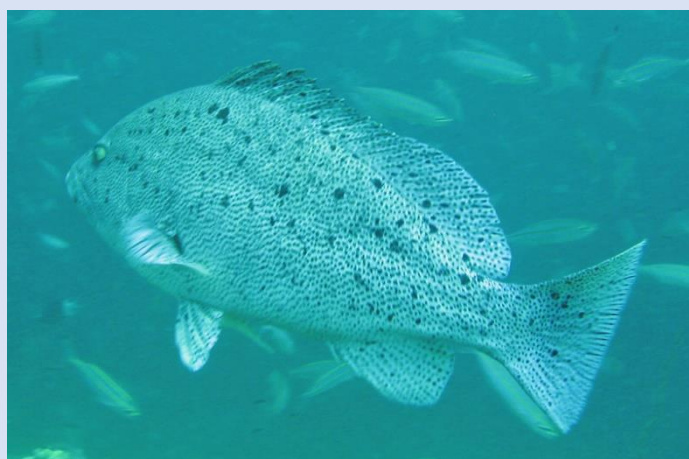
Oscillated Cod / White Spotted Grouper (38cm)

Epinephelus coeruleopunctatus



Purple Cod (38cm)

Epinephelus cyanopodus



Highfin Grouper (38cm)

Epinephelus maculatus



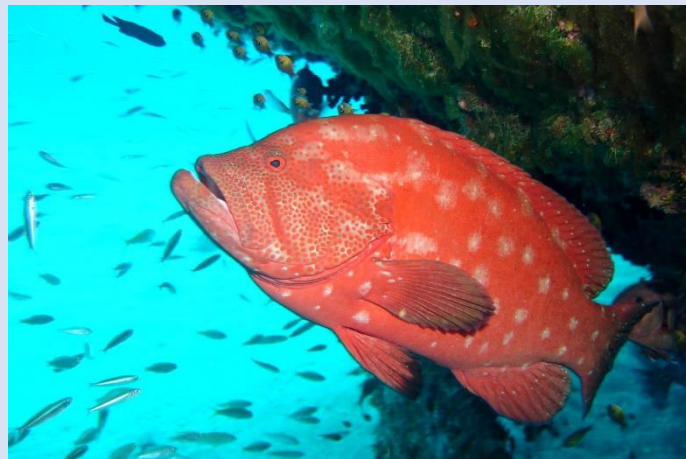
Coral Grouper (38cm)

Epinephelus corallicola



Tomato Cod (38cm)

Cephalopholis sonnerati



Peacock Rockcod (38cm)

Cephalopholis argus



Coral Rockcod (38cm)

Cephalopholis miniata



Freckled / Sixband Rockcod (38cm)

Cephalopholis sexmaculata



Redmouth Rockcod (38 cm)

Aethaloperca rogaa



Coral Trout Combined possession limit of 7 in total

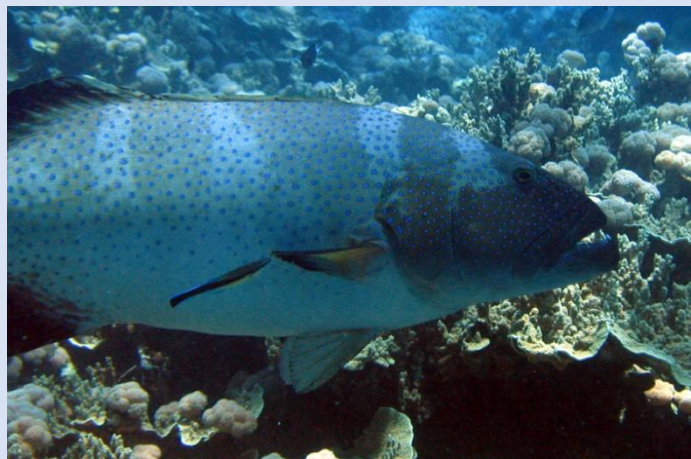
Bar Cheek / Coastal Trout (38cm)

Plectropomus maculatus



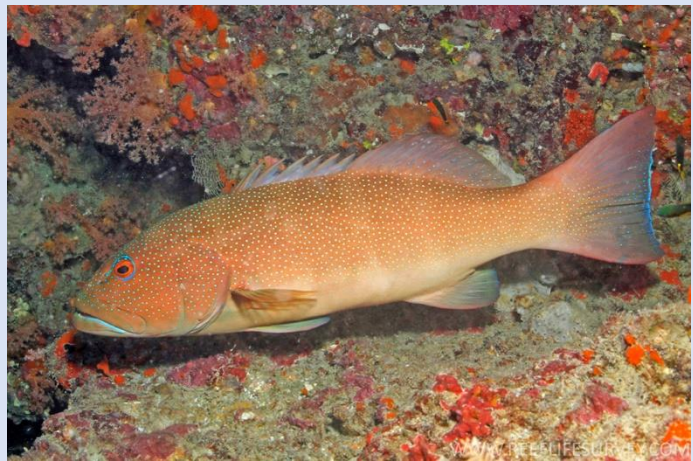
Blue Spot / Footballer Trout (50-80cm)

Plectropomus laevis



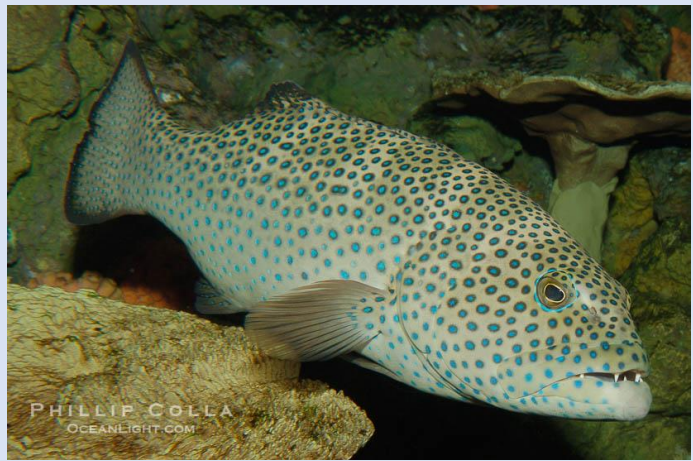
Common / Leopard Trout (38cm)

Plectropomus leopardus



Passionfruit Trout (38cm)

Plectropomus areolatus



Coronation Trout (yellowedge) (38cm)

Variola louti



Emperors

Bigeye Seabream (25cm)

Monotaxis grandoculis



Longnose Emperor (38cm)

Lethrinus olivaceus



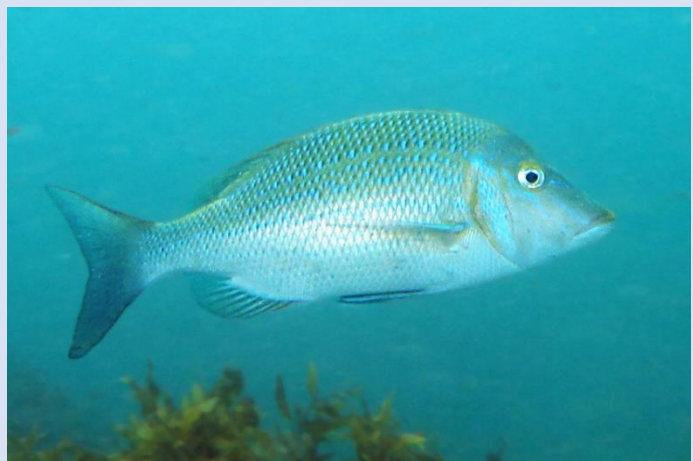
Redthroat Emperor (38cm)

Lethrinus miniatus



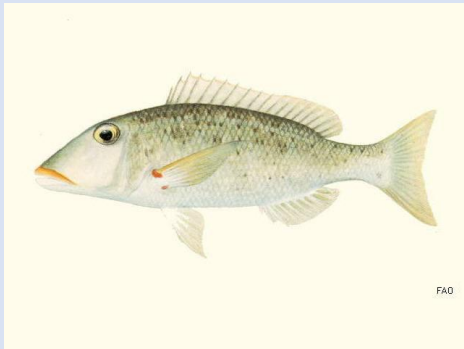
Spangled Emperor (45cm)

Lethrinus nebulosus



Yellowlip Emperor (25cm)

Lethrinus xanthurus



Blue Spotted Sea Bream (25cm)

Gymnocranius microdon



Blacknape Large-Eye Sea Bream (25cm)

Gymnocranius satoi



Maori Sea Bream (25cm)

Gymnocranius grandoculis



Parrot Fish

All parrot species must be gutted prior to weigh in. Maximum of 2 listed parrot species per competitor per day. Only one of each listed parrot species to be weighed in per competitor for the duration of the competition.

Bicolour / Spotted Parrot (25cm)

Cetoscarus ocellatus



Blue Barred Orange Parrot (25cm)

Scarus ghobban



Green Tailed Parrot (25cm)

Scarus frenatus



Long Nosed Parrot (25cm)

Hipposcarus longiceps



Meadow / Ember / Half & Half Parrot (25cm)

Scarus rubroviolaceus



Spike Fin Parrot (25cm)

Scarus altipinnis



Steep / Blunt Head Parrot (25cm)

Chlorurus microrhinos



Tropical Snapper and Sea Perch

Darktail Snapper (25cm)

Lutjanus lemniscatus



Red Hussar (25cm)

Lutjanus adetii



Large Mouth Nannygai / Saddletail Snapper (40cm)

Lutjanus malabaricus



Maori Sea Perch (25cm)

Lutjanus rivulatus



Moses Perch (25cm)

Lutjanus russellii



One Spot Sea Perch (25cm)

Lutjanus monostigma



Red Emperor (55cm)

Lutjanus sebae



Small Mouth Nannygai / Crimson Snapper (40cm)

Lutjanus erythropterus



Stripey Snapper (25cm)

Lutjanus carponotatus



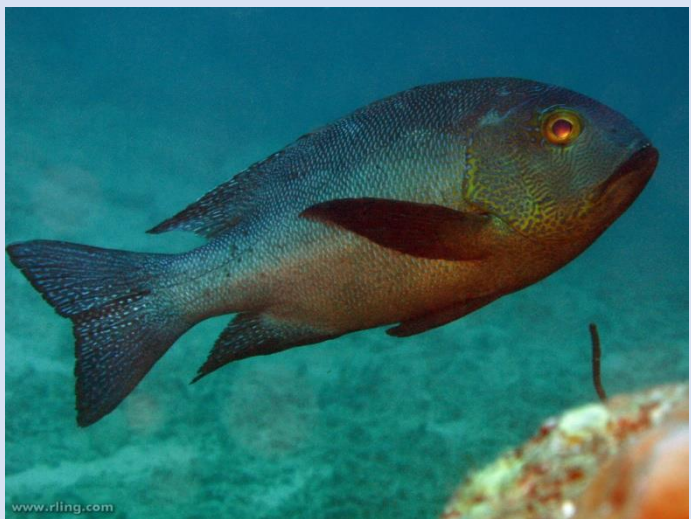
Black-and-White Sea Perch (25cm)

Macolor niger



Midnight Sea Perch (25cm)

Macolor macularis



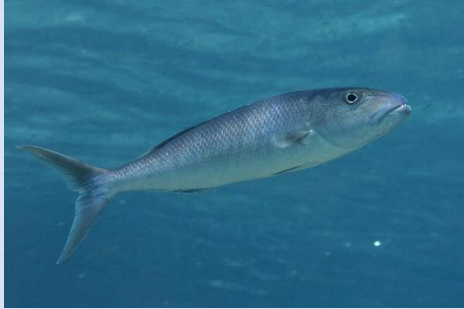
Blue Lined Sea Bream / Sailfin Snapper (25cm)

Symphoricthys spilurus



Green Jobfish (38 cm)

Aprion virescens



Smalltooth Jobfish (38cm)

Aphareus furca



Wrasse Combined possession limit of 6 regulated* tuskfish

Black Spot Tusk Fish (30cm)*

Choerodon schoenleinii



Blue Tusk Fish (30cm)*

Choerodon cyanodus



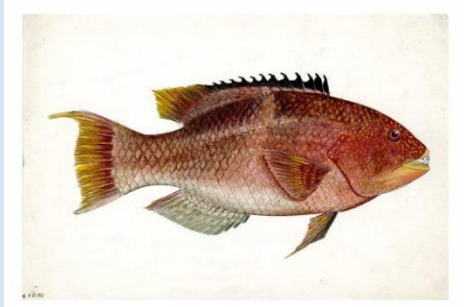
Venus Tusk Fish (30cm)*

Choerodon venustus



Gold Spot Hog Fish

Bodianus perditio



Part 2: OTHER TIDAL SPECIES:

Other Fin Fish:

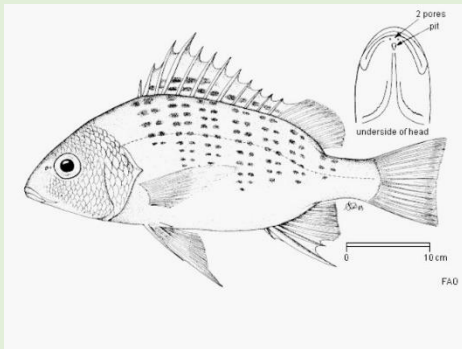
Barramundi (58cm-120cm)

Lates calcarifer



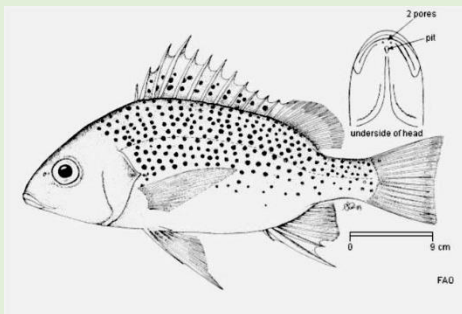
Barred Javelin (45cm)

Pomadasys kaakan



Silver Javelin (30cm)

Pomadasys argenteus



Dusky Flathead (50cm-130cm)

Platycephalus fuscus

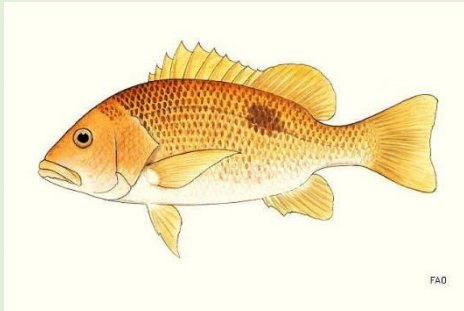


Flathead – other (30cm)

Platycephalus spp.

Fingermark / Golden Snapper (35cm)

Lutjanus johnii



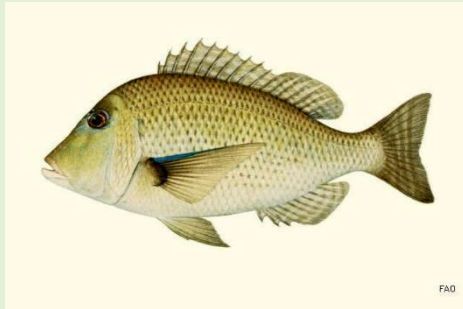
Mangrove Jack (35cm)

Lutjanus argentimaculatus



Grass Emperor (25cm)

Lethrinus laticaudis



Dash-and-dot Goatfish

Parupeneus barberinus



Other wrasse:

Black Wrasse
Coris aygula



Graphic Tusk Fish
Choerodon graphicus



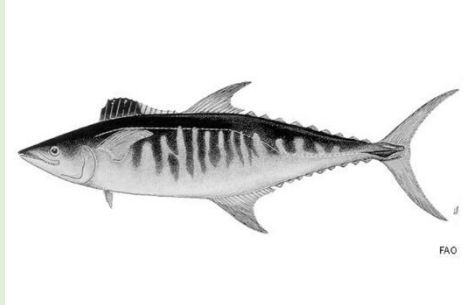
Thicklip Wrasse
Hemigymnus melapterus



Mackerel & Tuna:

Grey Mackerel (60cm)

Scomberomorus semifasciatus



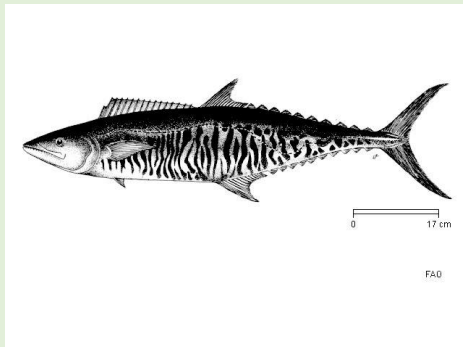
School Mackerel (50cm)

Scomberomorus queenslandicus



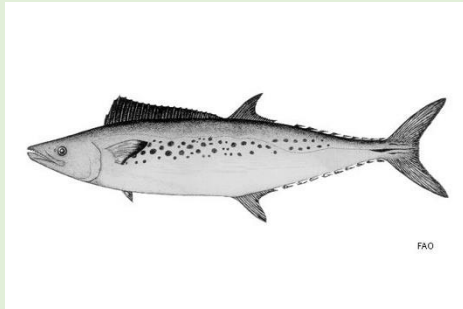
Spanish Mackerel (75cm)

Scomberomorus commerson



Spotted Mackerel (60cm)

Scomberomorus munroi



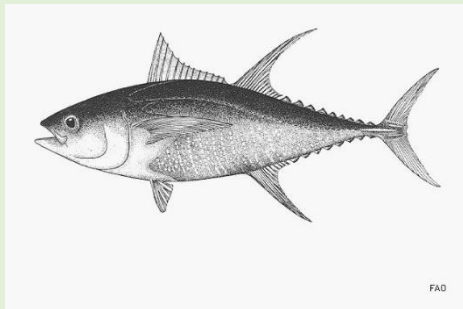
Longtail Tuna

Thunnus tonggol



Yellowfin Tuna

Thunnus albacares



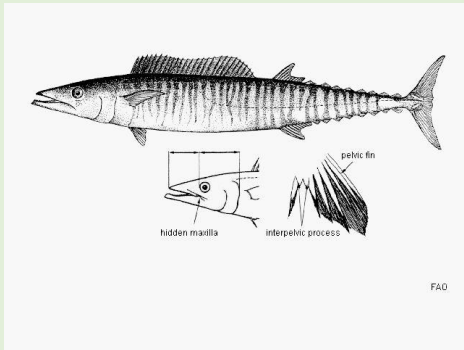
Dogtooth Tuna

Gymnosarda unicolor



Wahoo (75cm)

Acanthocybium solandri



Trevally

Maximum of 2 listed trevally species per competitor per day. Only one of each listed trevally species to be weighed in per competitor for the duration of the competition.

Blue Finned Trevally

Caranx melampygus



Cale Cale / Longraker Trevally

Ulua mentalis



Diamond Trevally

Alectis indica



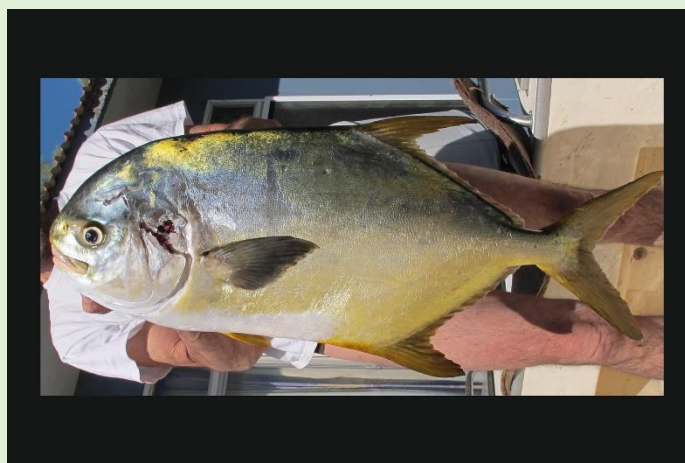
Pennant Fish

Alectis ciliaris



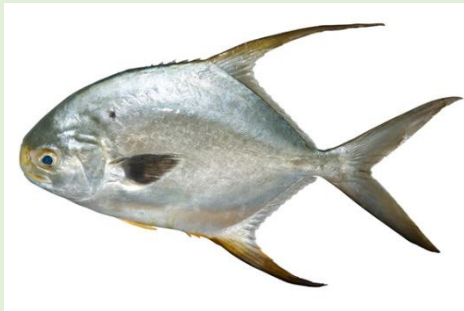
Giant Oystercracker

Trachinotus anak



Snub Nosed Dart

Trachinotus blochii



Giant Queenfish (50cm)

Scomberoides commersonianus



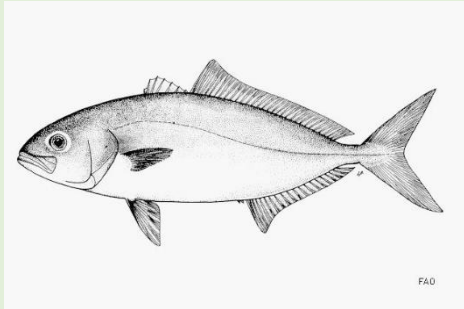
Golden Trevally

Gnathanodon speciosus



Greater Amberjack (50cm)

Seriola dumerili



Highfin Amberjack (50cm)

Seriola rivoliana



Yellowtail Kingfish (60cm)

Seriola lalandi



Other Pelagic:

Cobia (75cm)

Rachycentron canadum



Mahi Mahi / Dolphin Fish (50cm)

Coryphaena hippurus



Rainbow Runner

Elagatis bipinnulata



reeflifesurvey.com



NIGEL MARSH
PHOTOGRAPHY

Part 3: NO TAKE AND INELIGIBLE SPECIES – DISQUALIFICATION OR POINTS PENALTIES WILL RESULT

INELIGIBLE SPECIES

All protected & unlisted species, including but not limited to: sharks, rays and crustaceans; all molluscs and shellfish; squids, octopus, cuttlefish; pipefish, flutefish and trumpetfish; marine mammals; all toad fishes; protected species; catfish and frogfish; and any other fish ineligible under "B Section Rules" as follows:

ALL PROTECTED SPECIES	GOLD SPOTTED COD
ALL UNLISTED SPECIES	BLACK SPOTTED COD
ALL SURGEONS	FLOWERY COD
ALL UNICORNS	CAMOUFLAGE COD
ALL BATFISH	GIANT TREVALLY
ALL PAINTED SWEETLIP	SUCKERFISH
ALL BARRACUDA	ALL BILLFISH
ALL SPINEFOOT	MILKFISH
ALL DRUMMER	MULLET
ALL UNLISTED COD AND GROUPER	PARROT – NAPOLEON
ALL UNLISTED GOATFISH	PARROT - SURF
ALL UNLISTED PARROT	PARROT – DARK QUARTER
ALL UNLISTED PARROT	PARROT – DARK QUARTER

NO TAKE SPECIES – **DISQUALIFICATION WILL RESULT IF A COMPETITOR IS IN POSSESSION OF A NO TAKE SPECIES – the following is not an exhaustive list:**

Australasian Snapper

Chrysophrys auratus

NO TAKE – DISQUALIFICATION

(closed season)



Pearl Perch

Glaucosoma scapulare

NO TAKE – DISQUALIFICATION

(closed season)





Barramundi Cod
Chromileptes Altivelis

NO TAKE - DISQUALIFICATION



Chinaman Fish
Symphorus Nematophorus

NO TAKE - DISQUALIFICATION



Humphead maori wrasse

Cheilinus undulatus

NO TAKE - DISQUALIFICATION



Paddletail

Lutjanus gibbus

NO TAKE - DISQUALIFICATION



Potato Cod

Epinephelus Tukula

NO TAKE - DISQUALIFICATION



Queensland Grouper

Epinephelus Lanceolatus

NO TAKE - DISQUALIFICATION



Red Bass, Kelp Sea Perch

Lutjanus Bohar

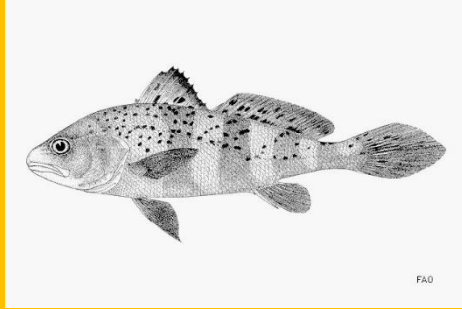
NO TAKE - DISQUALIFICATION



INELIGIBLE SPECIES – **POINTS PENALTIES WILL RESULT IF A COMPETITOR IS IN POSSESSION OF AN INELIGIBLE SPECIES – the following is not an exhaustive list:**

Black Jewfish – INELIGIBLE

Protonibea diacanthus



Estuary Cod – INELIGIBLE

(Gold Spotted Estuary Cod)

Epinephelus Coioides



Black Spotted Reef Cod – INELIGIBLE

(Black Spotted Estuary Cod)

Epinephelus Malabaricus



Flowery Cod – **INELIGIBLE**

Epinephelus Fuscoguttatus



Camouflage Cod – **INELIGIBLE**

Epinephelus polypekadion



Giant Trevally – **INELIGIBLE**

Caranx Ignobilis



Humphead Parrotfish - **INELIGIBLE**

(Napolean Parrot)

Bolbometopon muricatum



Dark Quarter Parrotfish – **INELIGIBLE**

Scarus oviceps



Surf Parrotfish – **INELIGIBLE**

Scarus rivulatus





NO TAKE SPECIES – ****DISQUALIFICATION**** WILL RESULT IF A COMPETITOR IS IN POSSESSION OF A NO TAKE SPECIES

The following species are protected throughout Queensland and are therefore prohibited from being in anyone's possession without a permit. If accidentally caught, these species must be immediately and carefully returned to the water.

Tidal waters

- Australian bass (no take between 1 June to 31 August)
- Barramundi cod
- Chinaman fish
- Humphead maori wrasse
- Paddletail
- Potato rockcod
- Queensland grouper
- Red bass
- Black teatfish
- Great white shark
- Grey nurse shark
- Hammerhead sharks (smooth hammerhead shark, scalloped hammerhead shark and great hammerhead shark)
- Sawfish (narrow sawfish, green sawfish and dwarf sawfish)
- Snapper (no take between 15 July to 15 August)
- Speartooth shark
- Manta ray
- Bivalve molluscs and gastropods (excluding pipi) (caught in Moreton Bay)
- White teatfish
- White shark
- Other oysters (it is illegal to take oysters (excluding pearl oysters) from any oyster ground; however, you may consume oysters on the spot where taken in any public oyster reserve or unlicensed oyster grounds)
- Winghead shark
- Sea cucumber (south of Bowen or in the Gulf of Carpentaria (south of latitude 20 degrees south and west of longitude 142 degrees 31'49" east))
- Sandtiger shark
- Pearl perch (no take between 15 July to 15 August)
- Clams (family Tridacnidae), helmet shells and trumpet shells
- Mud crab (female)
- Blue swimmer crab (female)
- Spanner crab (male and female are no take between 1 November to 31 December) (egg-bearing are always no take)
- Three-spot crab (egg-bearing)
- Red champagne lobster (egg-bearing or with tar spots/sperm packets attached)
- Painted crayfish (egg-bearing or with tar spots/sperm packets attached)
- Balmain bug (egg-bearing)
- Black jewfish (Note: Black jewfish will become a no-take species if the annual total allowable commercial catch is reached)
- Slipper lobster (egg-bearing)
- Moreton bug (egg-bearing)