

POWER GENERATION VPP WORK GROUP

Q4 2024

November 14, 2024

Please check in on the chat function with your name, title and company. Feel free to add email



Safety Moment

Presented By: Justin Maynard

Safety EHS Specialist

Onward Energy



OnwardEnergy

Where renewable meets reliable.

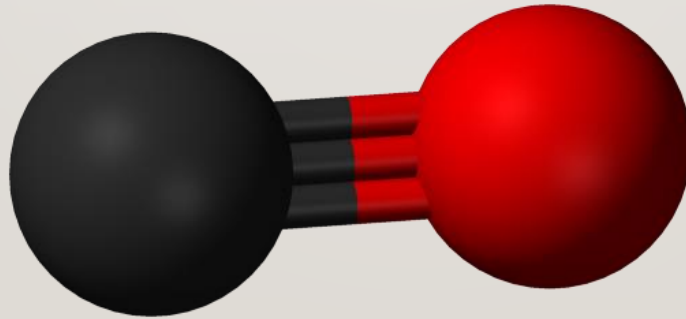


CARBON MONOXIDE SAFETY AT HOME



WHAT IS CARBON MONOXIDE (CO)?

- Colorless, odorless, and tasteless gas
- Produced by burning fuels like gas, oil, wood, and coal
- Invisible but deadly- responsible for hundreds of deaths annually in the U.S.



COMMON HOUSEHOLD SOURCES OF CO

- Fuel burning appliances (gas stoves, furnaces, water heaters)
- Fireplaces and wood stoves
- Portable generators and space heaters
- Running vehicles in garages



SYMPTOMS OF CO POISONING

- Mild: Headache, dizziness, nausea, shortness of breath
- Severe: Confusion, vomiting, loss of coordination, unconsciousness
- Symptoms often mistaken for the flu.



This Photo by Unknown Author is licensed under [CC-BY-SA-NC](#)

CARBON MONOXIDE DETECTORS

- Install detectors on every level, near bedrooms, and in hallways
- Test monthly and replace batteries yearly
- Replace detectors 5-7 years
- Placement: High on walls or on the ceiling



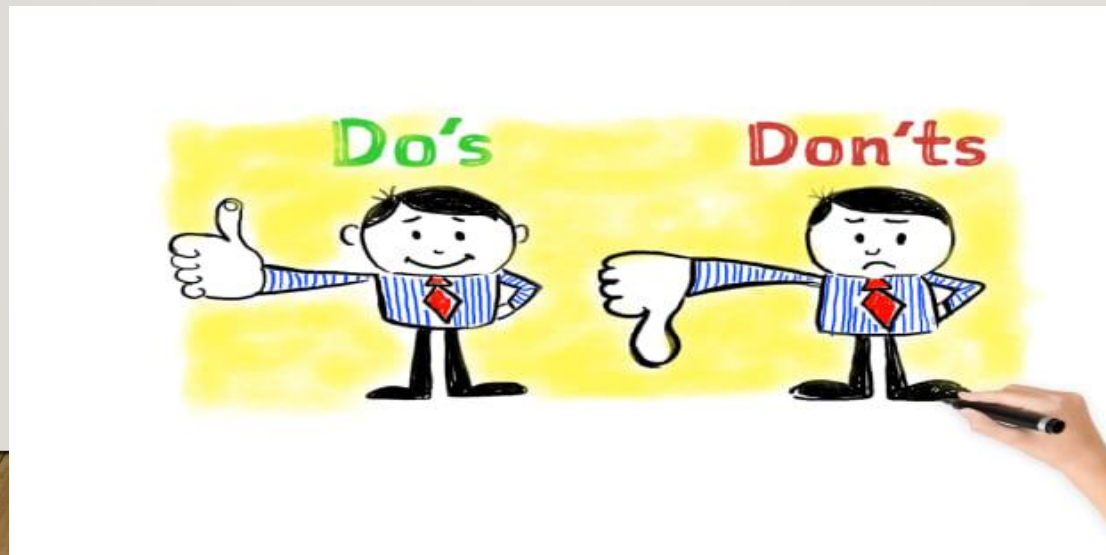
PREVENTATIVE MAINTENANCE

- Annual inspections of fuel-burning appliances and chimneys
- Ensure vents and flues are clear of debris (snow, leaves)
- Never use a gas stove for heating
- Proper ventilation for all fuel-burning appliances



SAFE USE OF FUEL BURNING EQUIPMENT

- Use portable generators outdoors, at least 20 feet away from windows
- Ensure proper ventilation when using space heaters and fireplaces
- Never run vehicles in enclosed garages, even with doors open
- Use only appliances designed for indoor use



WHAT TO DO IF THE ALARM SOUNDS

- Immediately evacuate everyone from the house
- Call 911 or emergency services
- Do not re-enter the home until authorities declare it safe
- Seek medical attention if experiencing symptoms



CONCLUSION

- Install and maintain CO detectors
- Be vigilant about fuel-burning appliances and potential hazards
- Respond quickly to any alarms or symptoms of CO poisoning



VPP Updates

Since last meeting:

New VPP Applications
Submitted or Accepted

Initial VPP Approvals

VPP Reapprovals



Special Government Employees (SGE)



Notes and Opportunities

- 10 SGE Training classes are scheduled through April of 2025. <https://www.osha.gov/sge/sge-training>
- SGE Opportunities – <https://www.osha.gov/sge/onsite>
- For more SGE Program Information - <https://www.osha.gov/sge>



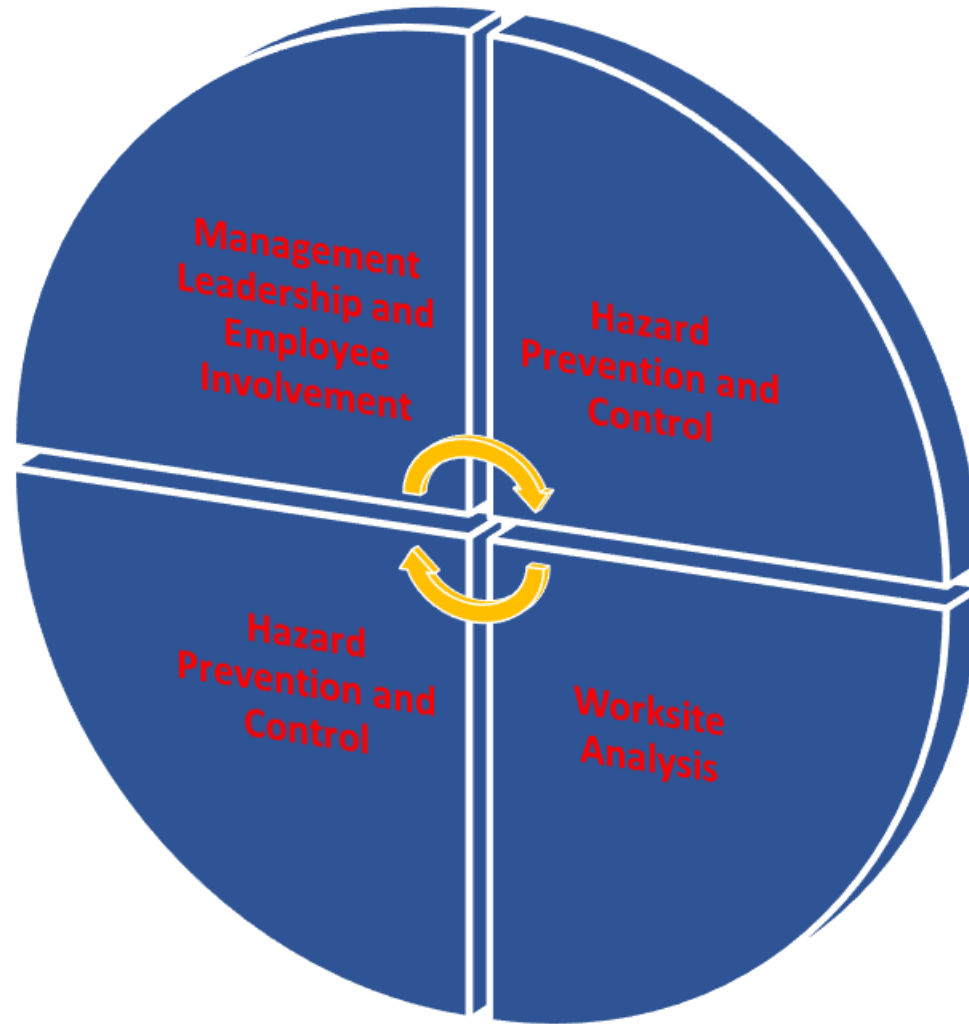
VPP Element

Todd Wulf

Manager, Safety &
Training

Talen Montana

Colstrip Power Plant



HAZARD PREVENTION & CONTROL

CONFINED SPACE ACCESS CONTROL

TODD WULF

TALAN MONTANA

COLSTRIP POWER PLANT

COLSTRIP POWER PLANT (CPP)

- MINE MOUTH, COAL FIRED GENERATING STATION
- CURRENTLY OPERATING 2 UNITS, PRODUCING 1,480 MW
- OPERATE WET SCRUBBERS FOR PM AND SO₂ REMOVAL
- ZERO DISCHARGE FACILITY
- CURRENTLY EMPLOY 260



HAZARD PREVENTION AND CONTROL

- SUB-ELEMENTS

Certified Professionals	Hazard Elimination & Control Methods
Emergency Preparedness	Occupational Health Care
Preventive/Predictive Maintenance	Hazard Correction Tracking
Disciplinary System	Hazard Control Programs

- PURPOSE: ELIMINATE OR REDUCE, TO THE LOWEST LEVEL FEASIBLE, THE POTENTIAL FOR HARM

HAZARD PREVENTION AND CONTROL

- TAKES INPUT FROM
 - EMPLOYEES / SAFETY COMMITTEES / TEAMS
 - ROUTINE HAZARD ANALYSIS
 - PRE-USE /CHANGE ANALYSIS
 - SELF INSPECTIONS
 - HAZARD REPORTING
 - IH MONITORING
 - INCIDENT REVIEWS / INVESTIGATIONS

HAZARD PREVENTION AND CONTROL

- HAZARD CONTROL PROGRAMS
 - CONTROLLING CONFINED SPACE ACCESS POINTS
 - HOW DO PERSONNEL KNOW WHEN IT IS SAFE TO OPEN?
 - HOW DOES OPERATIONS KNOW THAT AN ACCESS POINT WAS OPENED?
 - HOW DOES OPERATIONS KNOW THAT ALL ACCESS POINTS THAT WERE OPENED ARE CLOSED?



ORIGIN

- In 2008, a contractor employee died in a confined space that Operations did not know was opened.
- Lesson learned after this tragic event: We needed to control entry into confined spaces, which includes the management of opening and closing all confined space access points.

TODAY'S OBJECTIVES

1. Describe how CPP integrated our Confined Space Entry Process and our Clearance Process (Lock-out/Tag-out).
2. Learn one way to manage Confined Space Access points, including the authorization and tracking.

CONFINED SPACE ACCESS PERMIT PROCESS

- Before opening access point – approved by Operations
 - Confined Space Access Permit hung at each access point
- Confined Space Access Permit(s) hung after energy source isolation
- Personnel must be locked onto Clearance prior to opening access point and before entering the Confined Space
- Confined Space Access Points are verified closed and Permit is removed before energy source restoration

CONFINED SPACE ACCESS PERMIT PROCESS

- All confined space access points identified with unique “Door Number” and Description

CONFINED SPACE DOOR NUMBER LISTING

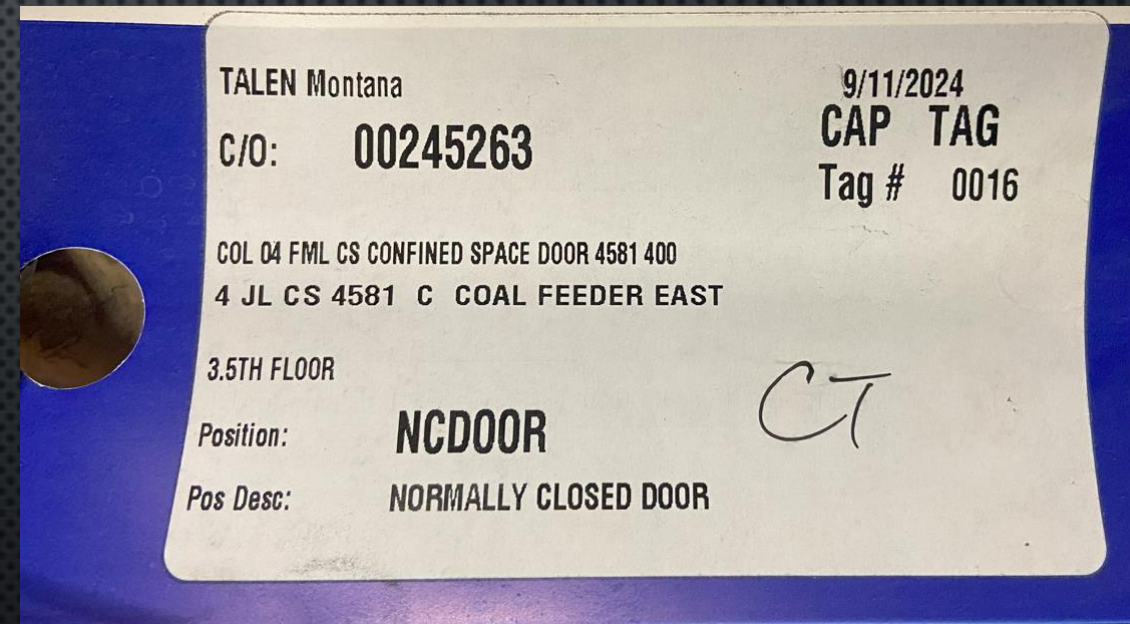
Unit	Ops system	System	Equipment	DOOR #	Coordinator	Engineer	DESCRIPTION	LOCATION
4	JL	FML	CS	4576	Joey Rozwadowski	Ryan McKinney	A-COAL FEEDER WEST	3.5TH FLOOR
4	JL	FML	CS	4577	Joey Rozwadowski	Ryan McKinney	A-COAL FEEDER EAST	3.5TH FLOOR
4	JL	FML	CS	4578	Joey Rozwadowski	Ryan McKinney	B-COAL FEEDER WEST	3.5TH FLOOR
4	JL	FML	CS	4579	Joey Rozwadowski	Ryan McKinney	B-COAL FEEDER EAST	3.5TH FLOOR
4	JL	FML	CS	4580	Joey Rozwadowski	Ryan McKinney	C-COAL FEEDER WEST	3.5TH FLOOR
4	JL	FML	CS	4581	Joey Rozwadowski	Ryan McKinney	C-COAL FEEDER EAST	3.5TH FLOOR
4	JL	FML	CS	4582	Joey Rozwadowski	Ryan McKinney	D-COAL FEEDER WEST	3.5TH FLOOR
4	JL	FML	CS	4583	Joey Rozwadowski	Ryan McKinney	D-COAL FEEDER EAST	3.5TH FLOOR
4	JL	FML	CS	4584	Joey Rozwadowski	Ryan McKinney	E-COAL FEEDER WEST	3.5TH FLOOR
4	JL	FML	CS	4585	Joey Rozwadowski	Ryan McKinney	E-COAL FEEDER EAST	3.5TH FLOOR
4	JL	FML	CS	4586	Joey Rozwadowski	Ryan McKinney	F-COAL FEEDER WEST	3.5TH FLOOR
4	JL	FML	CS	4587	Joey Rozwadowski	Ryan McKinney	F-COAL FEEDER EAST	3.5TH FLOOR

INTEGRATION OF CONFINED SPACE ENTRY AND CLEARANCE

- All energy isolating devices entered in Asset Suite
- All Door Numbers and descriptions entered in Asset Suite
- Asset Suite generates the Clearance Orders (lockout/tagout procedure and lists each access door(s) requested)
- A Confined Space Access Permit is made specifically for each door requested

INTEGRATION OF CONFINED SPACE ENTRY AND CLEARANCE

- This is an example of the Confined Space Access Permit (“Blue Tag”)



CLEARANCE AND CONFINED SPACE PROCESS

- The Qualified Employee (QE) receives the clearance request
 - Request for a standard model clearance with all Confined Space Access Doors; or
 - Request clearance on equipment and specific Confined Space Access Doors

CLEARANCE AND CONFINED SPACE PROCESS

- The QE creates the clearance order
 - This includes:
 - Listing of all energy isolating devices and the requested confined space doors
 - Clearance Tags are printed for each isolating device
 - Confined Space Access Permit Tags are printed for each requested door

CLEARANCE AND CONFINED SPACE PROCESS

- The Switchman, using the Clearance Order:
 - CRO – equipment shutdown and installation of DCS Tags
 - Repositions all isolating devices and hangs Clearance Tags
 - Switchman then hangs to Confined Space Access Permit Tags

Chk	Chk		Tag	Required	Tag
List	Seq	Action	Type	Position	Number
001	014	HANG	DNG	CLOSED	0011

Equip: COL 04 FML MILL COAL C ZS COLD AIR S/OFF 400
4 JL ZS 125C \ MILL 4C COLD AIR SHUTOFF
COLD AIR SHUTOFF GATE

Chk	Chk		Tag	Required	Tag
List	Seq	Action	Type	Position	Number
001	015	HANG	NOT	CLOSED	

Equip: COL 04 FML MILL COAL C CRS 126C 400
4 JL CRS 126C \ 4-C MILL HOT AIR GATE C/S
DCS - HOT AIR GATE

Chk	Chk		Tag	Required	Tag
List	Seq	Action	Type	Position	Number
001	016	HANG	DNG	OFF	0012

Equip: COL 04 FML MILL COAL C TZ HOT PA SHUTOFF 400
4 JL TZ 126C \ MILL 4C HOT PA SHUTOFF GATE
LOCAL DISCONNECT OFF WITH HOT AIR GATE CLOSED.

Chk	Chk		Tag	Required	Tag
List	Seq	Action	Type	Position	Number
001	017	HANG	DNG	CLOSED	0013

Equip: COL 04 FML MILL COAL C TZ AIR TEMP 400
4 JL TZ 153C \ MILL 4C COAL-AIR TEMP
HOT AIR GATE MANUAL HANDWHEEL

Chk	Chk		Tag	Required	Tag
List	Seq	Action	Type	Position	Number
001	018	HANG	DNG	CLOSED	0014

Equip: COL 04 FML MILL COAL C VLV SEAL AIR ISO 400
4 JL VL 809C \ SEAL AIR ISOL. VLV.
MILL SEAL AIR DAMPER

Chk	Chk		Tag	Required	Tag
List	Seq	Action	Type	Position	Number
001	019	HANG	CAP	NCD00R	0015

Equip: COL 04 FML CS CONFINED SPACE DOOR 4580 400
4 JL CS 4580 \ "C" COAL FEEDER WEST
3.5TH FLOOR

Chk	Chk		Tag	Required	Tag
List	Seq	Action	Type	Position	Number
001	020	HANG	CAP	NCD00R	0016

Equip: COL 04 FML CS CONFINED SPACE DOOR 4581 400
4 JL CS 4581 \ "C" COAL FEEDER EAST
3.5TH FLOOR

CLEARANCE AND CONFINED SPACE PROCESS

- THE HOLDER, USING THE CLEARANCE ORDER:
 - VERIFIES EACH ENERGY ISOLATING DEVICE AND APPLIES A CLEARANCE LOCK
 - CREATES THE MASTER KEY RING AND CRAFT/CONTRACTOR KEY RING

CLEARANCE AND CONFINED SPACE PROCESS

- Personnel opening / entering a Confined Space:
 - Must be locked onto the Clearance
 - Confined Space Access Permit must be hung on the door before opening
 - Confined Space Entry Procedure followed for safe entry

CLEARANCE AND CONFINED SPACE PROCESS

- After work is complete:
 - Personnel performing work inspect, close doors, remove Confined Space Entry Permit and release Clearance with Operations (QE)
- Switchman verifies all confined space doors are closed and removes each Confined Space Access Permit Tag
- Switchman then removes the Clearance tags and lines the equipment up for start-up

CONFINED SPACE ACCESS CONTROL

- QUESTIONS?

TODD WULF

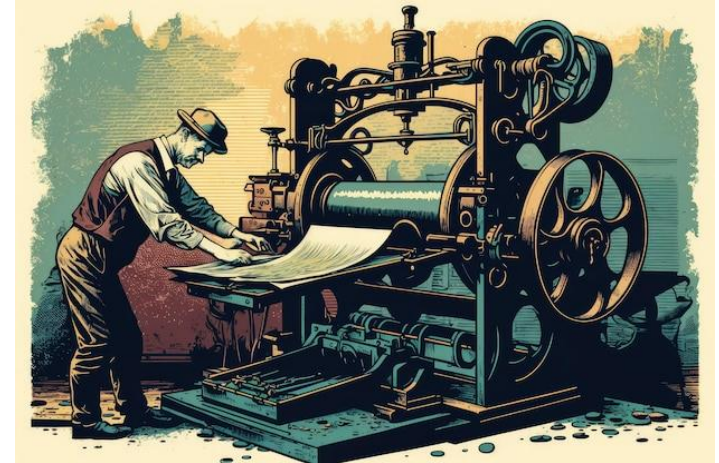
TALEN MONTANA

TODD.WULF@TALENENERGY.COM

406-748-5336

Newsletter Updates

- Newsletter Contributions
 - **Quarterly volunteer opportunities will be available during the 2025 Planning Meeting**
- Contact:
 - Michael Circle
 - Michael.Circle@OnwardEnergy.com





Ambassador Program

- The VPPPA Ambassador program was a big success at the National Conference.
 - Kelli will be assuming all leadership of the Ambassadors
 - The Volunteer Program will come under the Ambassador Program
 - Orientation for Volunteers the day before the conference starts
 - Want to take this to the Regional Level as well
- Let Kelli know if you are interested in the Ambassador program, volunteering at conferences and any mentoring opportunities.
- Mentoring—there will be a mentoring session presented at the National conference (and hoping for a webinar too).

Open Discussion

Questions?

Suggestions?

Discussion points?



2025 VPPPA Conference Schedule

- Region 1 - May 6-8, Southbridge, MA
- Region 2 – TBD
- Region 3 – May 19 – 23, Hershey, PA
- Region 4 – May 6-8, Stone Mountain, GA
- Region 5 – June 9-12, Indianapolis, IN
- Region 6 – May 19 – 22, Corpus Christi, TX
- Region 7 – TBD
- Region 8 – June 10 -14, Salt Lake City, UT
- Region 9 – April 15 – 17, San Diego, CA
- Region 10 – May 13 – 15, Portland, OR
- **VPPPA Safety+ - August 11 – 14, St. Louis, MO**



Next Call: December 5th 2024 1430 – 1530 EST 2025 PGVPP Planning Meeting

We will be seeking volunteers for Quarterly presentations, the Newsletter and for other support tasks

Send Suggestions or offers to volunteer to:

Alex Miller – alexander.miller@vistracorp.com

Or

Kelli Heflin – Kelli.Heflin@OnwardEnergy.com



2024 Meeting Schedule

~~February 15th~~

~~May 16th~~

~~August 15th~~

~~November 14th~~

Meetings are scheduled from 1430 – 1600ET
(1230 – 1400MT)

