

VERSATILE COMMERCIAL CONDOMINIUM

345 N. York Road, Hatboro, PA

FEATURES

- Versatile commercial condo for sale or rent
- 4,648 SF ground floor unit
Recently renovated, first class suite
- Efficient and flexible floor plan, can divide
- Convenient and ample on-site parking
- Well-established medical office location
- Excellent signage along well-travelled N.York Road

Immediate availability



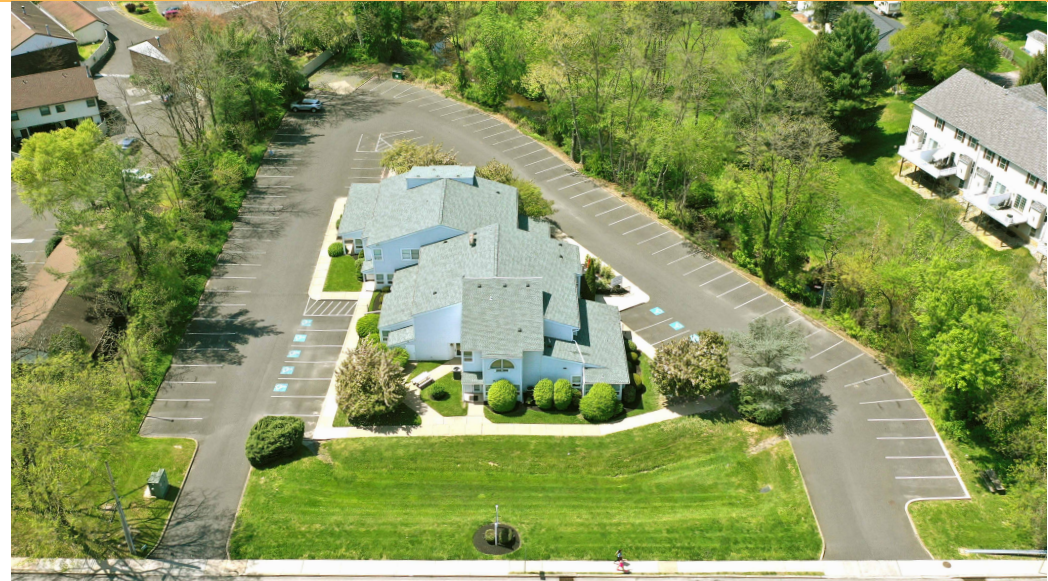
DEMOGRAPHICS

	1 Mile	3 Miles	5 Miles
Population	17,271	88,694	190,912
Average Income	\$107,944	\$127,062	\$158,201
Total Businesses	715	4,241	9,077
Total Employees	5,775	57,063	99,793

Walsh Commercial Real Estate, LLC

WWW.WALSHCRE.COM | 3 Village Road, Suite 200, Horsham, PA 19044 | 215.836.1340

Information contained herein has been obtained from sources deemed reliable, but no warranty or representation is made as to the accuracy thereof and it is subject to errors, omissions.
This property is offered subject to change of price, prior sale, lease, and or withdrawal without notice.



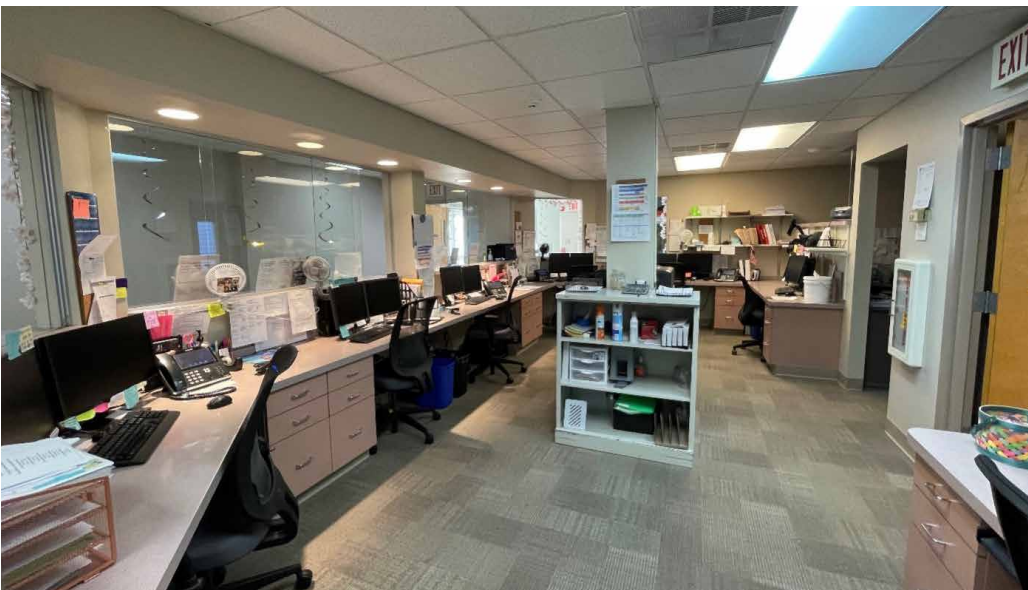
Walsh Commercial Real Estate, LLC

WWW.WALSHCRE.COM | 3 Village Road, Suite 200, Horsham, PA 19044 | 215.836.1340

Information contained herein has been obtained from sources deemed reliable, but no warranty or representation is made as to the accuracy thereof and it is subject to errors, omissions. This property is offered subject to change of price, prior sale, lease, and or withdrawal without notice.

VERSATILE COMMERCIAL CONDOMINIUM

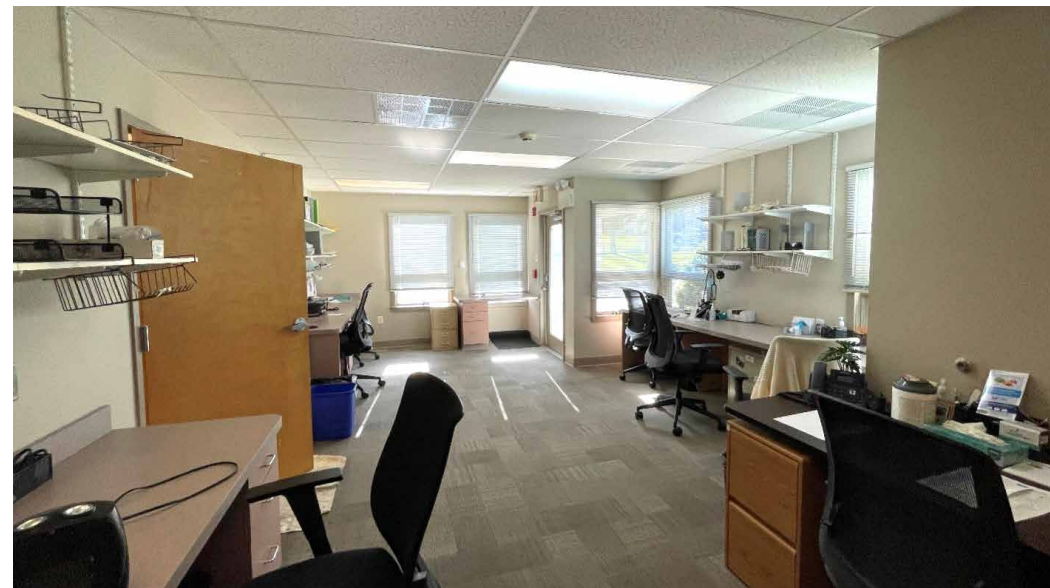
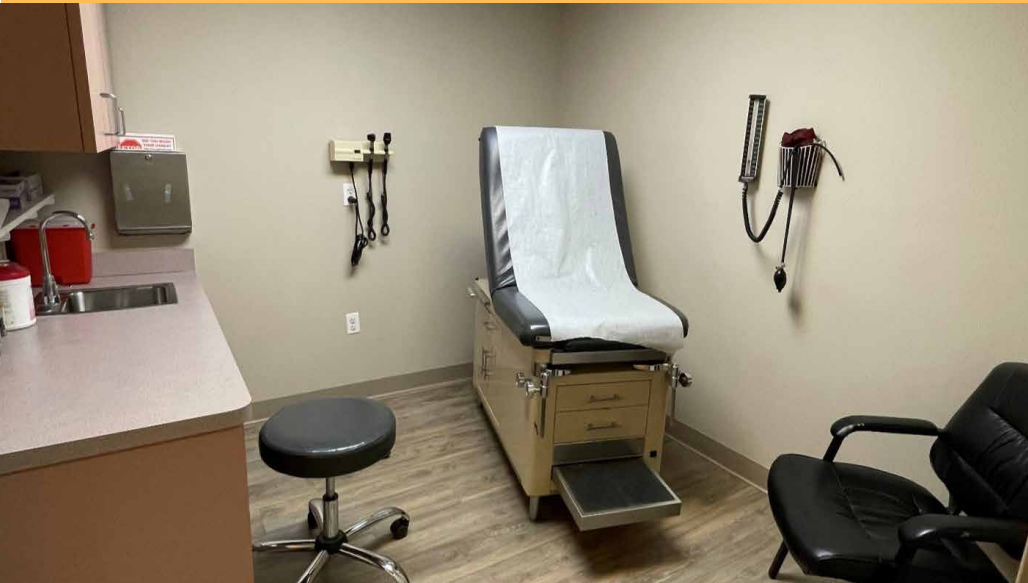
345 N. York Road, Hatboro, PA 19040



Walsh Commercial Real Estate, LLC

WWW.WALSHCRE.COM | 3 Village Road, Suite 200, Horsham, PA 19044 | 215.836.1340

Information contained herein has been obtained from sources deemed reliable, but no warranty or representation is made as to the accuracy thereof and it is subject to errors, omissions. This property is offered subject to change of price, prior sale, lease, and or withdrawal without notice.



Walsh Commercial Real Estate, LLC

WWW.WALSHCRE.COM | 3 Village Road, Suite 200, Horsham, PA 19044 | 215.836.1340

Information contained herein has been obtained from sources deemed reliable, but no warranty or representation is made as to the accuracy thereof and it is subject to errors, omissions. This property is offered subject to change of price, prior sale, lease, and or withdrawal without notice.