

“From Concept to Closing, with Integrity”

1844 Street Road, Southampton, PA 18966

FEATURES

- Well-maintained medical office building
- Presently demised with 5 tenant spaces
- 1+ acre parcel
- Convenient access from Street Road
- Ample on-site parking
- Excellent highway signage
- Immediate availability

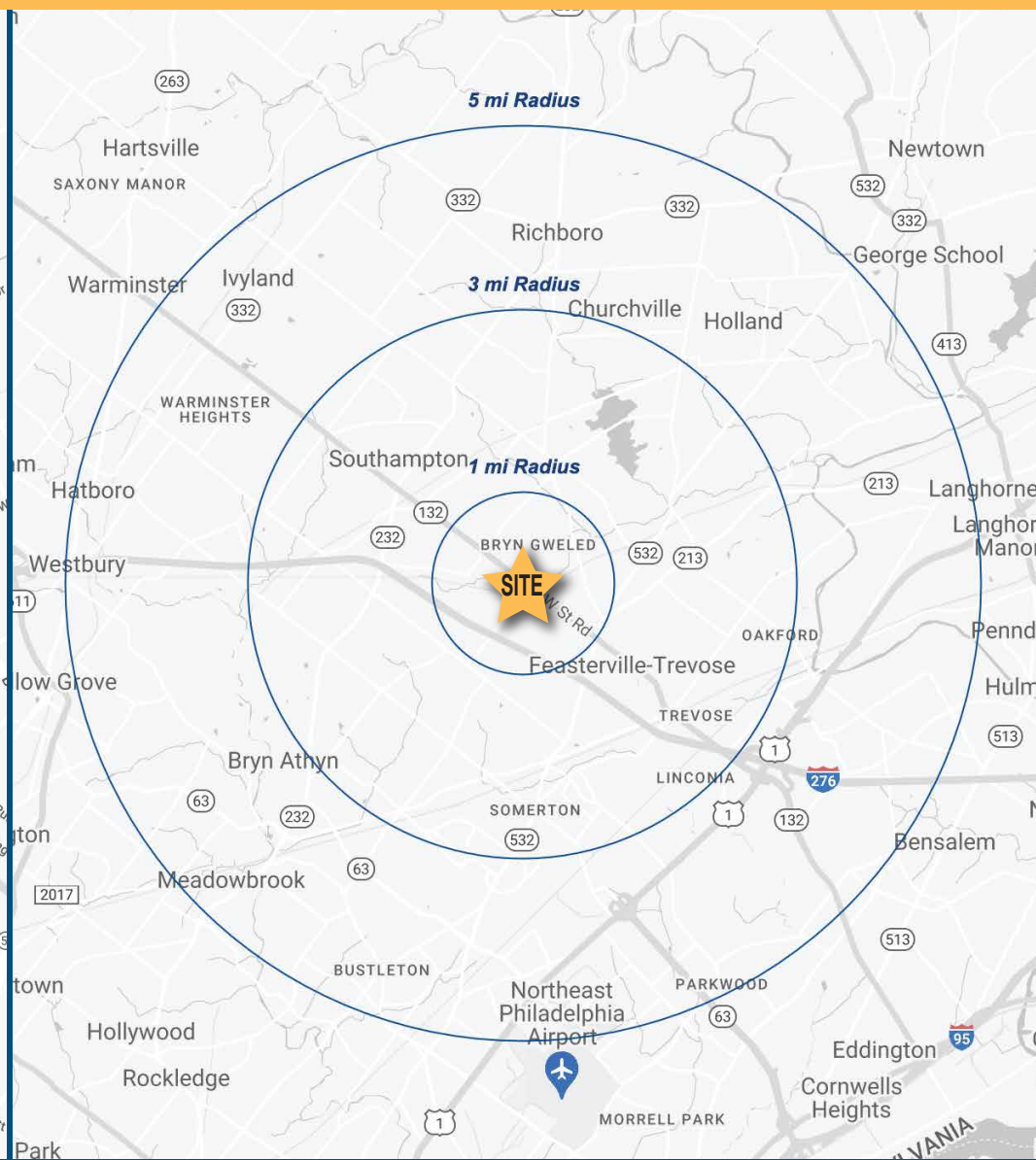
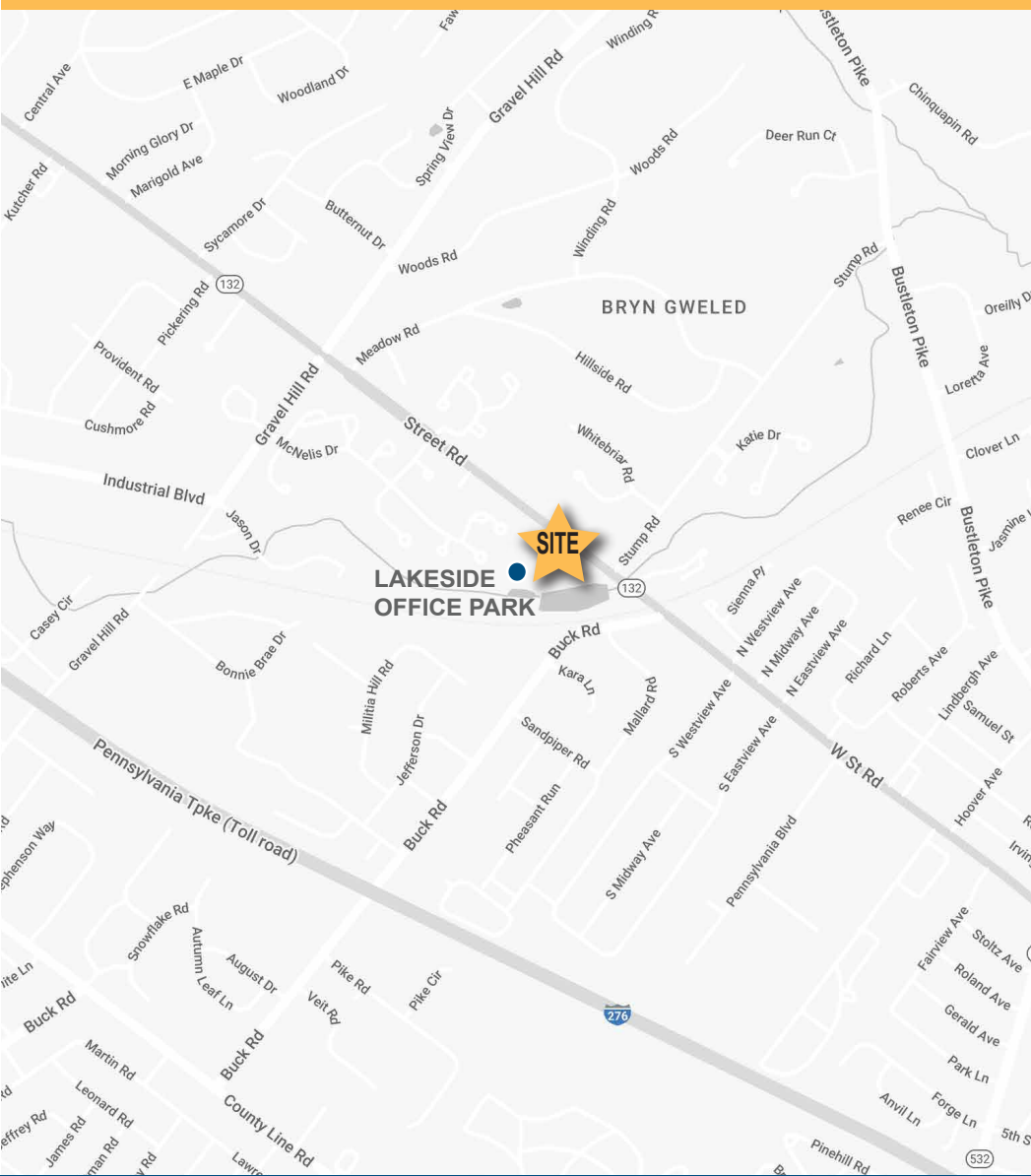


DEMOGRAPHICS

	1 MILE	3 MILES	5 MILES
Population	6,613	75,325	217,500
Average HH Income	\$165,788	\$135,798	\$135,394
Total Businesses	818	4,274	10,371
Total Employees	6,070	33,526	101,415

1844 Street Road, Southampton, PA 18966

Local & Regional Map

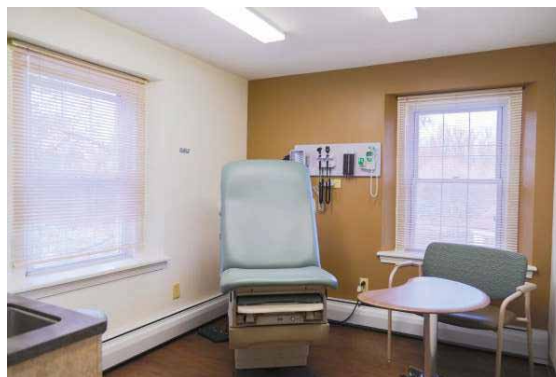
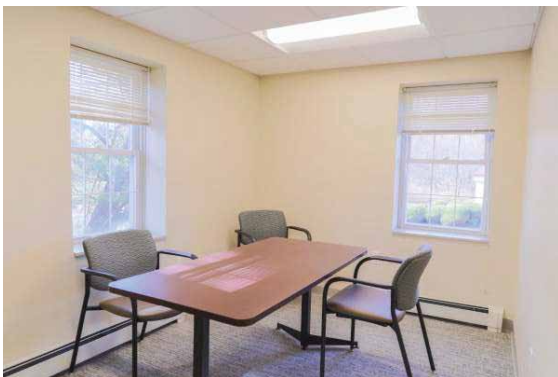


Walsh Commercial Real Estate, LLC
3 Village Road, Suite 200 | Horsham, PA 19044
215-836-1340 | walshcre.com

** Information contained herein was obtained from the property owner or sources deemed reliable. We have no reason to doubt its accuracy but we do not guarantee it. Walsh Commercial Real Estate, LLC represents the property owner.*

CONTACT:
Brendan W. Walsh
215-603-1234
bwalsh@walshcre.com

1844 Street Road, Southampton, PA 18966



Walsh Commercial Real Estate, LLC
3 Village Road, Suite 200 | Horsham, PA 19044
215-836-1340 | walshcre.com

** Information contained herein was obtained from the property owner or sources deemed reliable. We have no reason to doubt its accuracy but we do not guarantee it. Walsh Commercial Real Estate, LLC represents the property owner.*

CONTACT:
Brendan W. Walsh
215-603-1234
bwalsh@walshcre.com