

“From Concept to Closing, with Integrity”

## FEATURES

- 875 SF medical office suite
- 3 exam rooms
- Waiting-Room seating for 6
- Dictation Room
- Nursing Station
- Tenant signage on North Broad Street
- Convenient to Jefferson-Lansdale Hospital and the area’s major roadways



## DEMOGRAPHICS

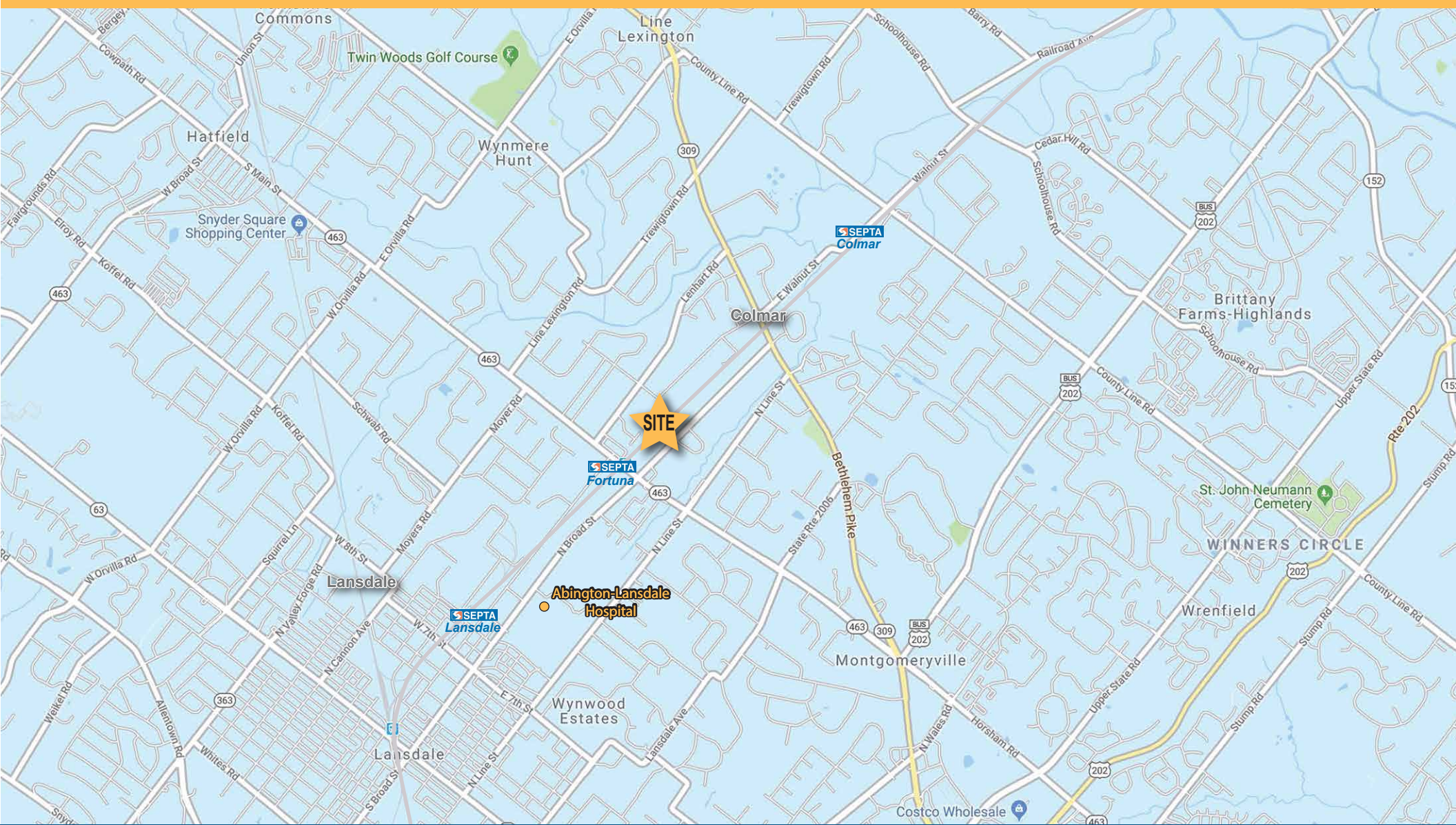
	1 MILE	3 MILES	5 MILES
Population	6,996	78,280	152,981
Average HH Income	\$111,511	\$109,993	\$122,117
Total Businesses	431	3,168	5,846
Total Employees	4,416	40,316	76,662

2032 N. Broad Street | Lansdale | Montgomery Co., PA 19446



2032 N. Broad Street  
Lansdale, PA 19446

# Medical Office Suite for Rent

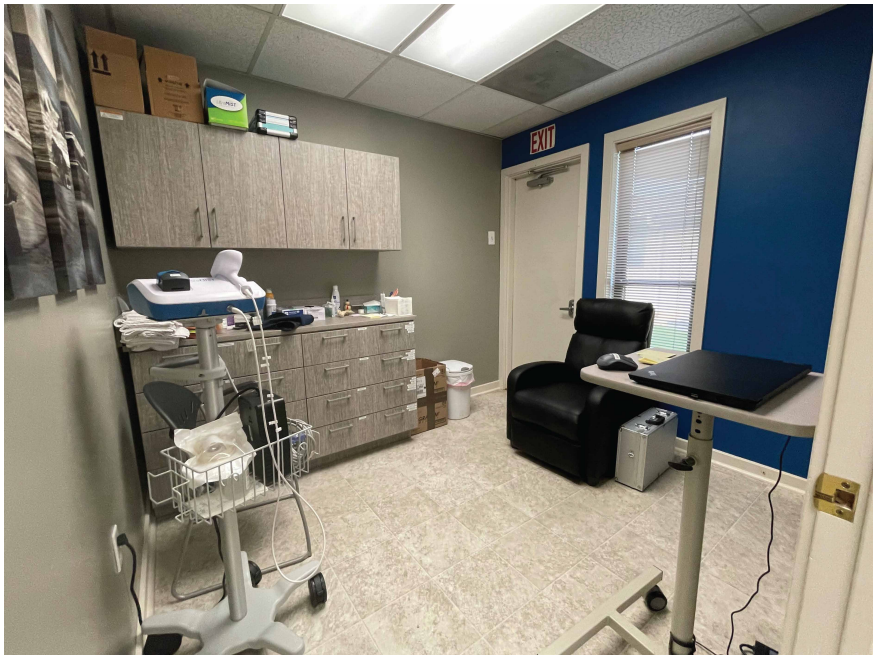


**Walsh Commercial Real Estate, LLC**  
3 Village Road, Suite 200 | Horsham, PA 19044  
215-836-1340 | [walshcre.com](http://walshcre.com)

**CONTACT:**  
**Brendan W. Walsh**  
215-836-1340  
[bwalsh@walshcre.com](mailto:bwalsh@walshcre.com)

# Medical Office Suite for Rent

2032 N. Broad Street  
Lansdale, PA 19446



**Walsh Commercial Real Estate, LLC**  
3 Village Road, Suite 200 | Horsham, PA 19044  
215-836-1340 | walshcre.com

**CONTACT:**  
**Brendan W. Walsh**  
215-836-1340  
bwalsh@walshcre.com