

“From Concept to Closing, with Integrity”

FEATURES

- First-class professional office space
- Full building available (9,000 SF)
 Full floors available from 4,750 SF
 Can demise suites from 2,375 SF
- Super-energy efficient construction; geo-thermal HVAC & electrical systems and super-energy efficient operable windows
- Ample on-site parking
- Highly visible tenant signage
- Conveniently located to the area’s major roadways, SEPTA regional rail, and Jefferson-Lansdale Hospital



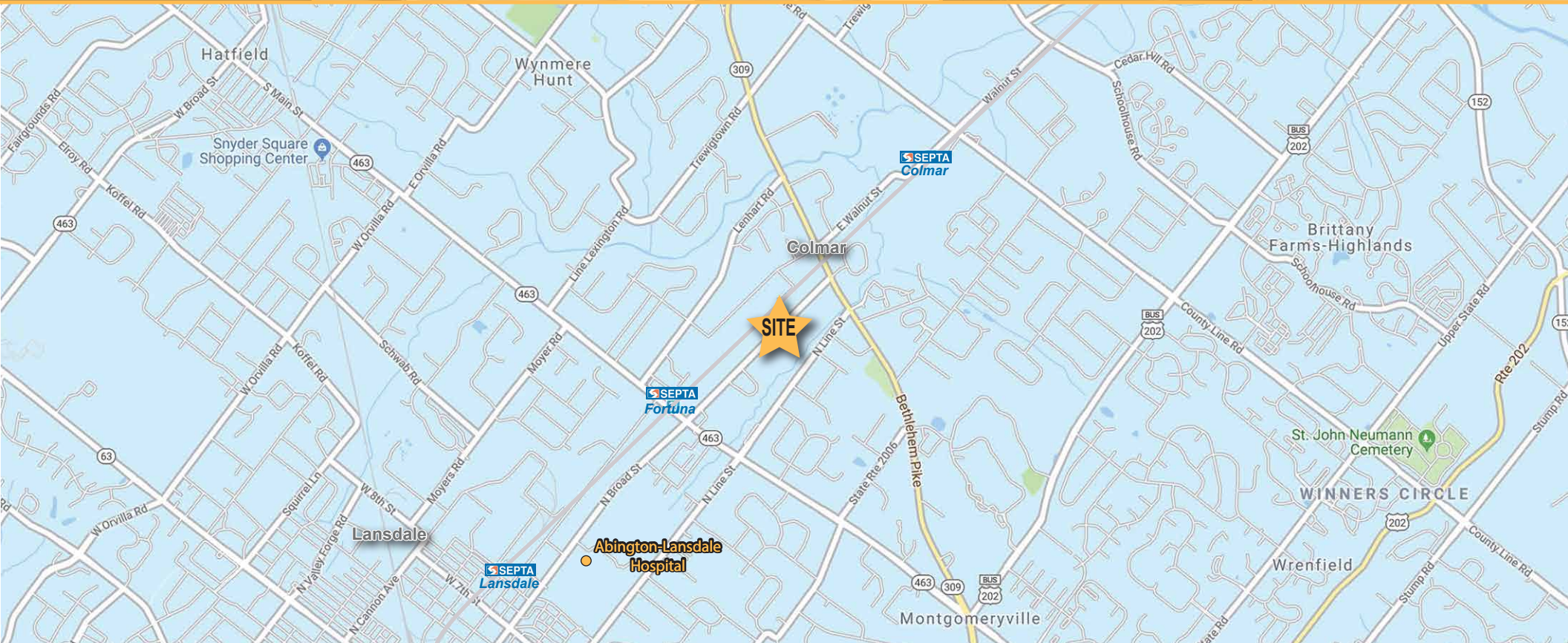
DEMOGRAPHICS

| | 1 MILE | 3 MILES | 5 MILES |
|-------------------|-----------|-----------|-----------|
| Population | 6,523 | 71,265 | 143,402 |
| Average HH Income | \$127,702 | \$107,249 | \$120,376 |
| Total Businesses | 707 | 3,307 | 5,921 |
| Total Employees | 5,524 | 38,573 | 72,933 |

2326 N. Broad Street | Lansdale | Montgomery Co., PA 19446

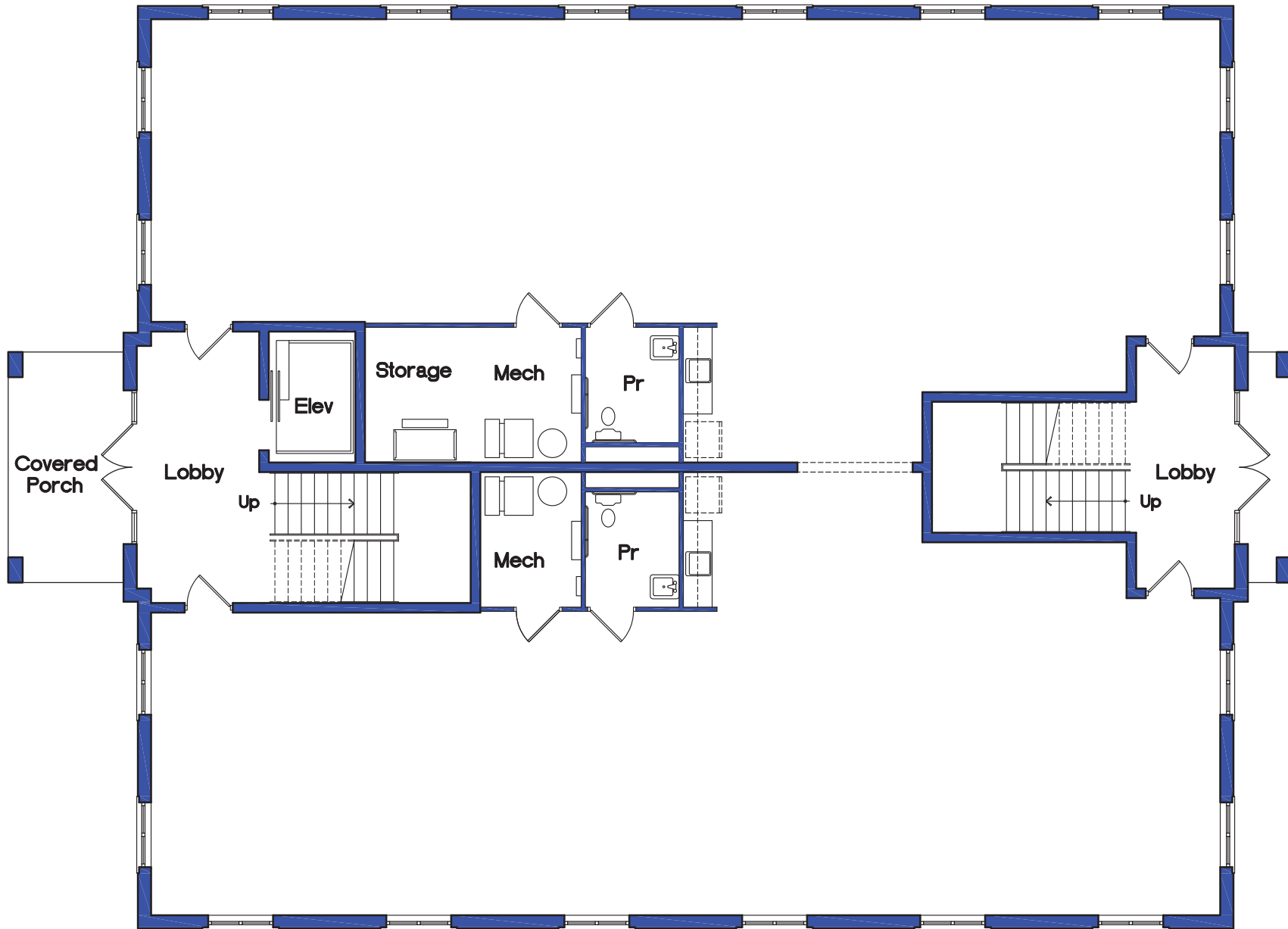


2326 N. Broad Street | Lansdale | Montgomery Co., PA 19446



Walsh Commercial Real Estate, LLC
3 Village Road, Suite 200 | Horsham, PA 19044
215-836-1340 | walshcre.com

CONTACT:
Brendan W. Walsh
215-836-1340
bwalsh@walshcre.com



Walsh Commercial Real Estate, LLC

3 Village Road, Suite 200 | Horsham, PA 19044
215-836-1340 | walshcre.com

CONTACT:

Brendan W. Walsh

215-836-1340

bwalsh@walshcre.com

Second Floor Open Floor Plan Ready for Build-Out

