



Walsh Commercial Real Estate, LLC
3 Village Road, Suite 200 | Horsham, PA 19044
215-836-1340 | walshcre.com

Contact:
Brendan W. Walsh
215-603-1234
bwalsh@walshcre.com

FEATURES

- ▶ 4,608 SF ground floor medical office suite with 13 exam rooms
- ▶ Recently renovated, first class suite
- ▶ Efficient and flexible floor plan, can divide
- ▶ Convenient and ample on-site parking
- ▶ Well-established medical office location
- ▶ Excellent signage along well-travelled Old York Road
- ▶ Offered for sale or lease



DEMOGRAPHICS

	1 Mile	3 Miles	5 Miles
Population	17,271	88,694	190,912
Average Income	\$107,944	\$127,062	\$158,201
Total Businesses	715	4,241	9,077
Total Employees	5,775	57,063	99,793

Walsh Commercial Real Estate, LLC

WWW.WALSHCRE.COM | 3 Village Road, Suite 200, Horsham, PA 19044 | 215.836.1340

Information contained herein has been obtained from sources deemed reliable, but no warranty or representation is made as to the accuracy thereof and it is subject to errors, omissions. This property is offered subject to change of price, prior sale, lease, and or withdrawal without notice.

AVAILABLE - MEDICAL OFFICE CONDO

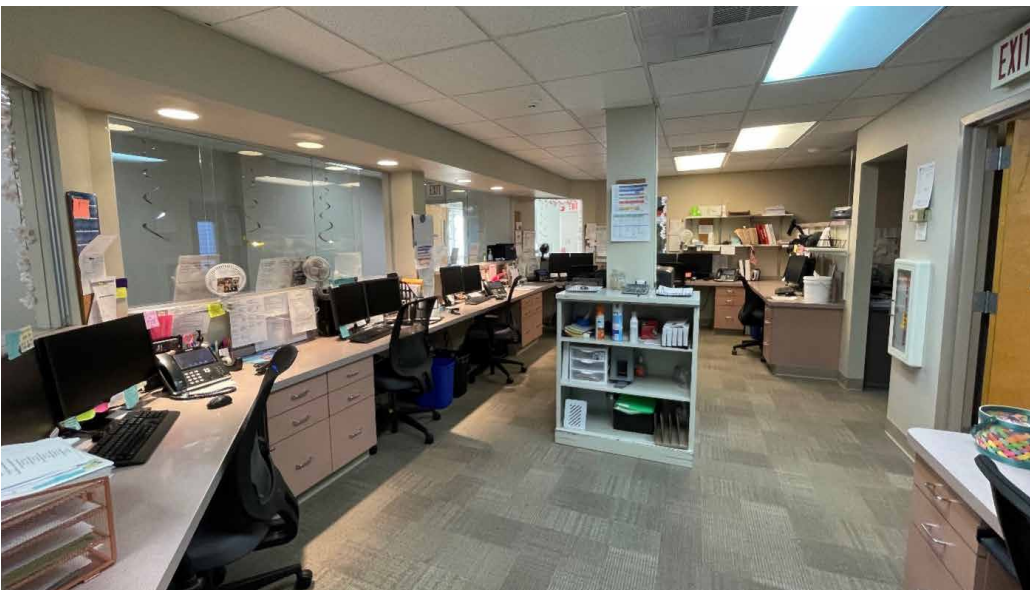
345 N. York Road, Hatboro, PA 19040



Walsh Commercial Real Estate, LLC

WWW.WALSHCRE.COM | 3 Village Road, Suite 200, Horsham, PA 19044 | 215.836.1340

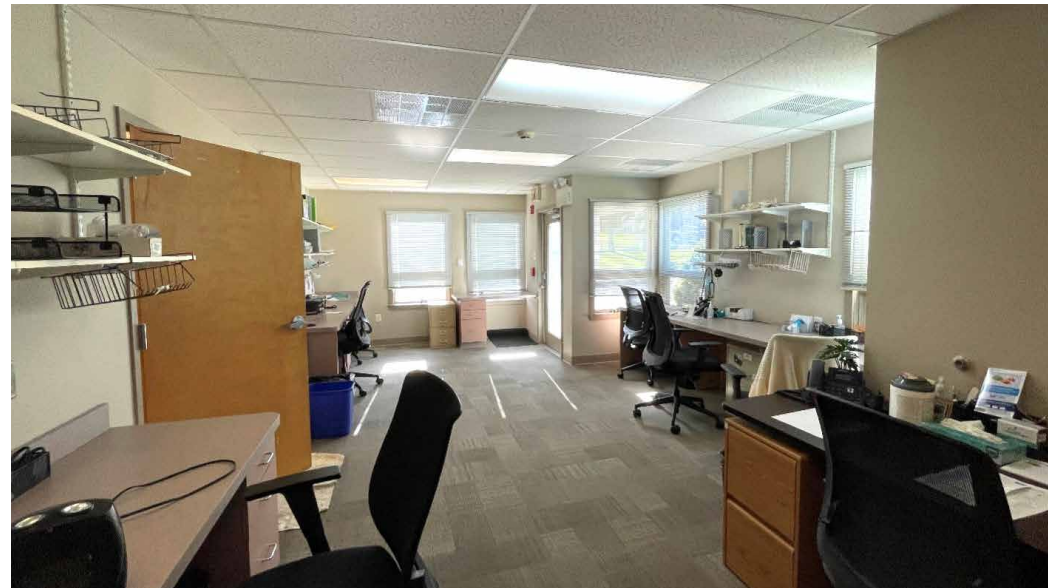
Information contained herein has been obtained from sources deemed reliable, but no warranty or representation is made as to the accuracy thereof and it is subject to errors, omissions. This property is offered subject to change of price, prior sale, lease, and or withdrawal without notice.



Walsh Commercial Real Estate, LLC

WWW.WALSHCRE.COM | 3 Village Road, Suite 200, Horsham, PA 19044 | 215.836.1340

Information contained herein has been obtained from sources deemed reliable, but no warranty or representation is made as to the accuracy thereof and it is subject to errors, omissions. This property is offered subject to change of price, prior sale, lease, and or withdrawal without notice.



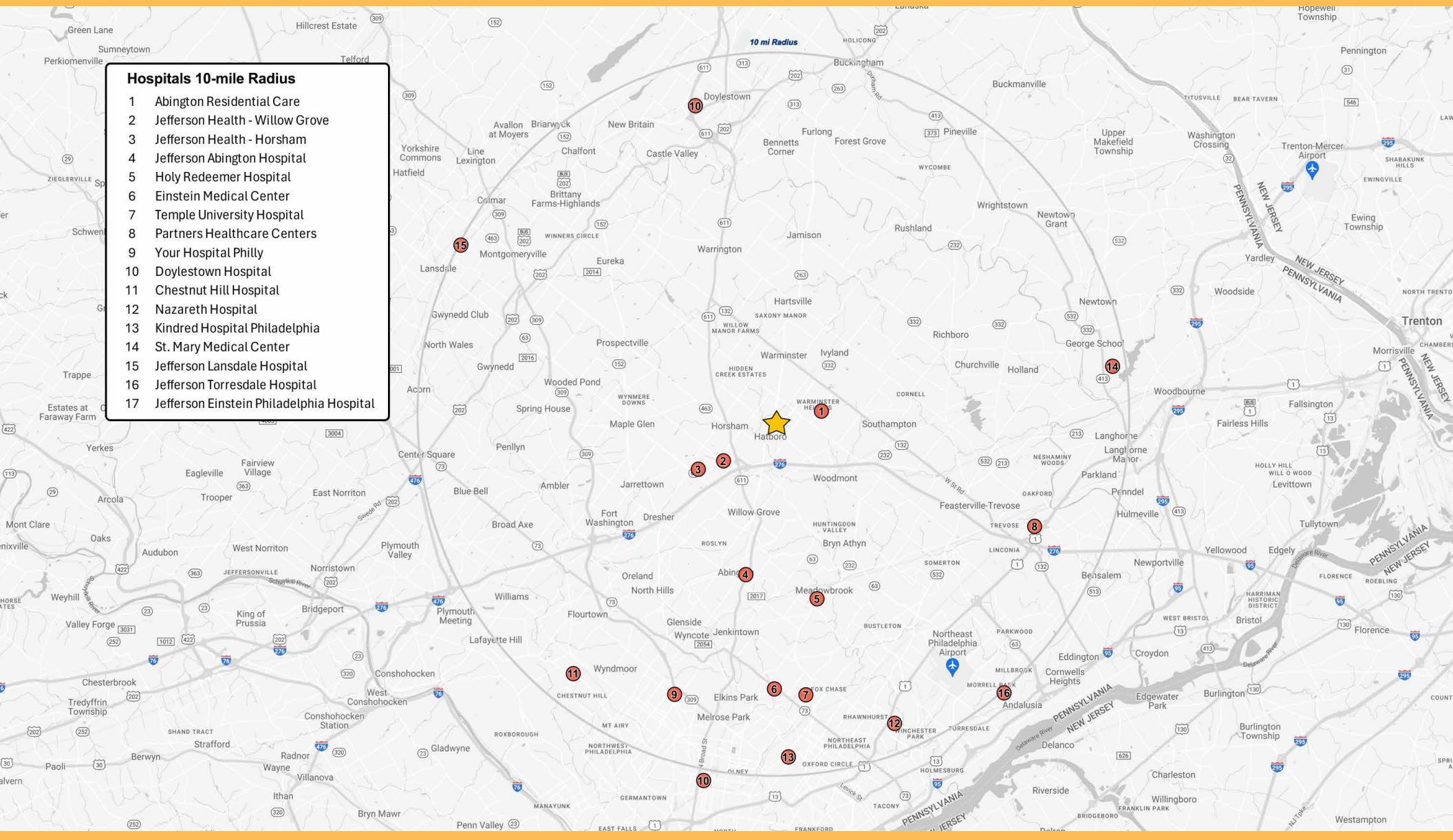
Walsh Commercial Real Estate, LLC

WWW.WALSHCRE.COM | 3 Village Road, Suite 200, Horsham, PA 19044 | 215.836.1340

Information contained herein has been obtained from sources deemed reliable, but no warranty or representation is made as to the accuracy thereof and it is subject to errors, omissions. This property is offered subject to change of price, prior sale, lease, and or withdrawal without notice.

Hospitals 10-mile Radius

- 1 Abington Residential Care
- 2 Jefferson Health - Willow Grove
- 3 Jefferson Health - Horsham
- 4 Jefferson Abington Hospital
- 5 Holy Redeemer Hospital
- 6 Einstein Medical Center
- 7 Temple University Hospital
- 8 Partners Healthcare Centers
- 9 Your Hospital Philly
- 10 Doylestown Hospital
- 11 Chestnut Hill Hospital
- 12 Nazareth Hospital
- 13 Kindred Hospital Philadelphia
- 14 St. Mary Medical Center
- 15 Jefferson Lansdale Hospital
- 16 Jefferson Torresdale Hospital
- 17 Jefferson Einstein Philadelphia Hospital



Walsh Commercial Real Estate, LLC

WWW.WALSHCRE.COM | 3 Village Road, Suite 200, Horsham, PA 19044 | 215.836.1340

Information contained herein has been obtained from sources deemed reliable, but no warranty or representation is made as to the accuracy thereof and it is subject to errors, omissions. This property is offered subject to change of price, prior sale, lease, and or withdrawal without notice.