

"From Concept to Closing, with Integrity"

601 Lawn Avenue | Sellersville, PA 18960

FEATURES

- 1,150 SF corner suite
- Newly renovated building
- On-site parking
- Convenient to Route 309 and the area's major roadways
- Immediate leasing opportunity

DEMOGRAPHICS

	1 MILE	3 MILES	5 MILES
Population	4,486	35,036	70,761
Average HH Income	\$84,263	\$98,836	\$103,291
Total Businesses	352	1,340	2,528
Total Employees	4,451	14,753	25,892



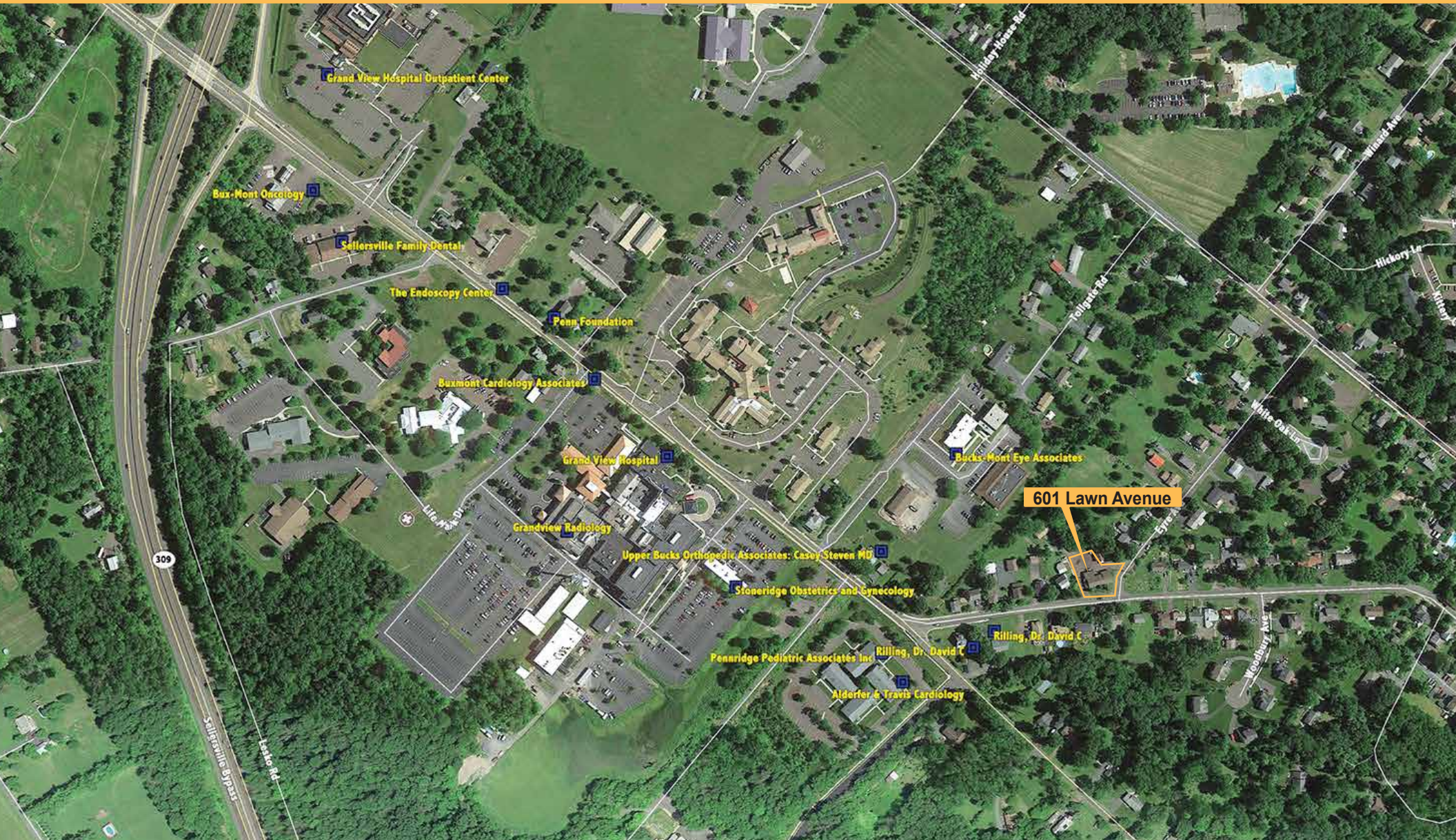
Walsh Commercial Real Estate, LLC
3 Village Road, Suite 200 | Horsham, PA 19044
215-836-1340 | walshcre.com

* Information contained herein was obtained from the property owner or sources deemed reliable. We have no reason to doubt its accuracy but we do not guarantee it.

CONTACT:
Brendan W. Walsh
215-836-1340
bwalsh@walshcre.com

FOR RENT:
1,150 SF Commercial Suite

601 Lawn Avenue
Sellersville, PA 18960



Walsh Commercial Real Estate, LLC
3 Village Road, Suite 200 | Horsham, PA 19044
215-836-1340 | walshcre.com

* Information contained herein was obtained from the property owner or sources deemed reliable. We have no reason to doubt its accuracy but we do not guarantee it.

CONTACT:
Brendan W. Walsh
215-836-1340
bwalsh@walshcre.com