

Wind-Driven Snow, Hail, Sleet Invade Southland in New Storm



FROSTED ORANGES — Snow decorates these oranges in a tree on Alta Canada Road, La Canada. Nearly two inches of snow blanketed the ground in that area last night.

Times photo

Heavy Fall Blocks Road, Maroons Girl Scout Party

Illustrated on Page 3, Part I.

Wind-driven snow, hail and sleet invaded Los Angeles and environs yesterday as one of several blizzards in Southland mountain areas marooned a party of San Diego Girl Scouts.

The freakish weather was only a harbinger of a new freeze which is expected to hold Southern California in another icy grip for the next three nights, the U.S. Weather Bureau reported.

In Los Angeles and vicinity the brief snow flurries began shortly after 4 p.m. Whipped by brisk winds, the light flakes melted as soon as they fell to the ground.

Foothill Towns White

Later in the night the foothill communities of Flintridge, La Canada, Altadena, Montrose, La Crescenta and northern sections of Glendale were covered with a gleaming white mantle of snow. Altadena reported lightning along with the snow.

In the foothill residential districts, where the snow blanket on lawns reached a depth of half an inch to an inch, children gleefully rushed out to make snowmen and engage in snowball fights. Automobiles wore snow bonnets and motorists were hampered as the flakes packed and froze on windshields.

Snow covered the ground in Glendale as far south as the City College on Verdugo Road. Cars parked on the Occidental College campus in Eagle Rock also were turned white.

Snowball Through Window

In Pasadena the light flakes remained on some lawns and shrubbery. Mrs. Freda Deem reported to police that children threw a snowball through her front window at 36 E Tremont St. Pasadena police also received complaints that children were throwing snowballs at automobiles at Washington St. and Lake Ave.

Lawns and roofs were whitened in Santa Monica and snow was reported falling on the Santa Monica pier, a sight which longtime residents of the beach city termed unprecedented. The Malibu Hills and Topanga Canyon were mantled with snow last night.

Motorists returning to Los Angeles from Palm Springs last night reported a blinding snowstorm raging between Banning and Pomona.

Scattered Flurries Reported

Light flurries were reported in scattered areas along the coast from Malibu to Long Beach and as far east as Riverside and Redlands. On the Box Springs Grade between Riverside and March Air Force Base, a heavy snowfall was reported to have left between four and six inches on the ground.

Twelve persons, including eight

members of a San Diego Girl Scout troop, were reported marooned at Lake Cuyamaca, 50 miles east of San Diego. A near-blizzard which left 14 inches of snow on the ground blocked their access to the nearest road a mile away.

Four adults in the party reported a good supply of water and fuel on hand and enough food for today's meals if it is rationed. Attempts to rescue the party, possibly with the aid of Sheriff's deputies and State foresters, will be resumed today.

Mountain Passes Closed

The California Highway Patrol announced that all roads leading through mountain passes to the east and north had been closed, with the exception of the Ridge Route where chains were required. One hundred and forty motorists were reported stranded in Cajon Pass.

The Angeles Crest Highway, the Palmdale cutoff and the Rim of the World Highway to Lake Arrowhead and Big Bear also were closed, the Highway Patrol said.

Officers said a solid line of cars, unable to move, blocked the highway between Crestline and Arrowhead during the afternoon. It was feared that many who had planned to spend only the week end at Arrowhead would be snowed in.

Eight Inches at Arrowhead

Lake Arrowhead reported eight inches of new snow with 27 inches on the ground, Big Bear eight inches of new snow with 28 inches on the ground, and Crestline 10 inches of new snow with 20 inches on the ground. San Geronio Pass experienced one of its worst blizzards.

In Los Angeles the snow flurries were reported at the Civic Center, the Echo Park district and the southwest sector. Similar

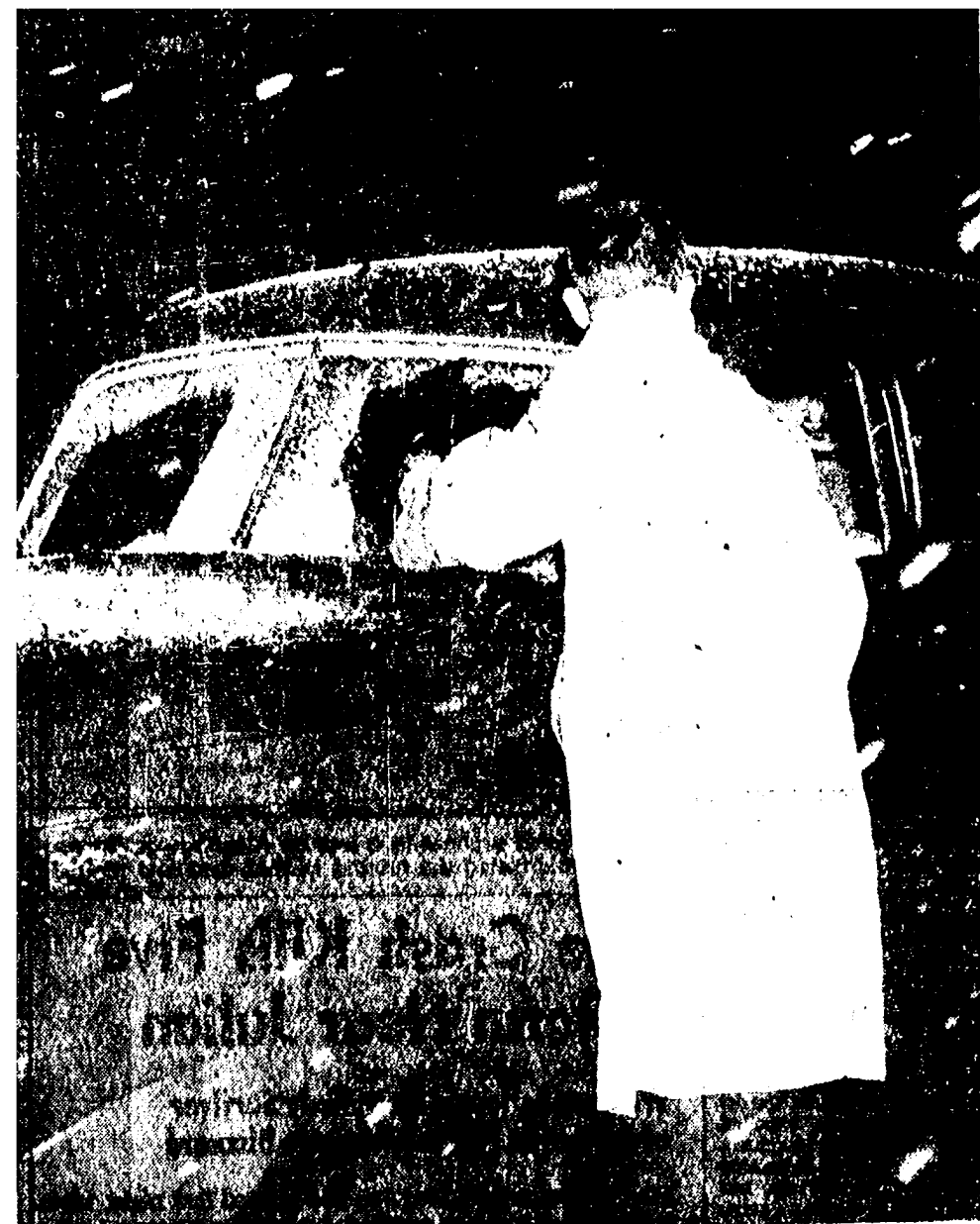
Turn to Page 2, Column 6



STRANGE FEELING—Linda Winder, 8, of Topanga Canyon gets acquainted with snow blanketing neighborhood. Pacific Press photo

SNOW, BEAUTIFUL SNOW!—Mr. and Mrs. Harvey Tibbals are shown putting finishing touches on the full-chest-

ed snow man they fashioned in front yard at 3746 La Crescenta Ave., Montrose. Bust measured 103 1/2 inches. Times photo



ICY SURPRISE—Across the street from Glendale Junior College an astonished motorist works to clear his windshield of snow and ice even as the flaky stuff falls. Times photo

WHITE COVER—Automobile parked at Linda Vista Ave. and Lida St., near the Rose Bowl, wears a temporary dress of snow. Parkway near the car is also covered with snow. Times photo

OUR UNUSUAL WEATHER

Continued from First Page
flurries have occurred here in recent years but the only measurable amount in the downtown area since 1877 was the two-inch fall on Jan. 15, 1932.

Other communities reporting light snow included Sherman Oaks, Tarzana, Encino, North Hollywood, Santa Monica, Mandeville Canyon, Topanga Canyon, Beverly Hills, Inglewood, Redondo Beach, Glendale, Burbank, Flintridge, Altadena, Temple City, Pasadena, Fontana and the San Bernardino Valley.

Riverside Snowballs

Long Beach's slight flurry at San Antonio Drive and Long Beach Blvd. was only that city's second in 50 years. At the Canyon Crest housing project in Riverside, which experienced its first snowfall in 19 years, there was enough snow on the ground for children to make snowballs.

Hail was reported in West Los Angeles, Hermosa Beach, Torrance, Gardena, San Pedro and East Los Angeles. El Monte had sleet.

An earlier rainfall brought in light sprinkles through scattered spots in the Southland.

An official figure gave Los An-

geles .02 of an inch of rainfall. The season's total here is now 2.31, compared with 1.92 for this time last year and 5.32 inches as the normal fall.

The Weather Bureau reported very cold air moving in on the Los Angeles area last night with the temperature at Palmdale down to 24 degrees shortly after 8 p.m.

Subfreezing temperatures were predicted for citrus areas by the Fruit Frost Warning Service at Pomona, with a low of 21 forecast for Canoga Park. Other low temperatures expected include Pacoima, 23; Sespe, 21; Chatsworth, 25; Azusa, 26; Cucamonga, 27, and San Gabriel, Riverside and Indio, 28.

Heavy Firing Seen

Serious frost trouble was seen for growers tonight, tomorrow night and Wednesday night. Floyd Young, head of the service and regional Weather Bureau chief, said that temperatures of 19 to 20 would prevail in coldest places during those nights, compared with lows of 17 during last week's disastrous freeze.

Generally, he said, lows of 22 to 26 would prevail, bringing about heavy firing for all citrus crops. Too, he reminded growers that the midweek frost prediction was three days in advance, and could change with shifts in weather conditions.

But all along the Pacific Coast weather front, indications were that continued icy weather is in prospect.

Storm Front Here

In its weather summary issued yesterday, the Weather Bureau here had this to say:

"Barometers are high over Brit-

ish Columbia and off the Washington coast and are low over the southwestern portion of the United States. A storm front now passing through Southern California has brought light showers to scattered points and fresh to strong west to northwest winds are likely to continue through Monday."

Lowest temperature recorded in Los Angeles early yesterday was 41. The day's high was 53.

Storm Warnings Out

Stiff winds accompanied yesterday's rain and snow and resulted in posting of storm warnings along the coast from Point Conception to San Diego.

At Santa Monica, a 45-foot former Navy picket boat, now used as a Sea Scout vessel, was grounded in the surf by a 38 m.p.m. wind. Lifeguards got lines aboard the craft and planned to pull it free at high tide.

A small fishing boat also was grounded at Santa Monica. A large plate glass window in a furniture store at 10th St. and Wilshire Blvd., Santa Monica, was blown in by the wind.

Trees were blown down at Hollywood Blvd. and Orange Drive and at Canoga and Ventura Bldvs., San Fernando Valley. A wooden wall at Wilshire Blvd. and Crescent Drive was toppled by the wind, blocking the street.

A wooden fence around a building undergoing alterations at Hollywood Blvd. and Vista Del Mar Ave., was blown down. At 2414 Riverdale Ave. a large tree toppled over on a car owned by Mrs. Ruth Bird, of 2418 Riverdale Ave.

Numerous burglar alarms throughout the city were touched off by the wind.