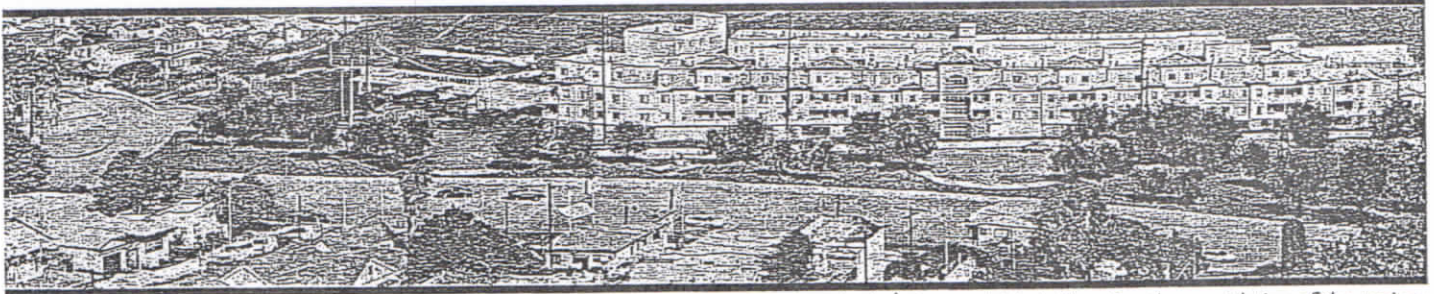


# FACT SHEET

## SOTO STREET BRIDGE OVER MISSION ROAD AND HUNTINGTON DRIVE PROJECT



*This is a rendering of what the location would look like after the completion of the project.*

### PROJECT OVERVIEW

The Soto Street Bridge Over Mission Road and Huntington Drive Project would remove the Soto Street Bridge, currently extended between Supreme Court and Turquoise Street, and reconfigure the Soto Street/Mission Road and Huntington Drive South/Huntington Drive North intersections to provide major north-south traffic movement between Mission Road and Huntington Drive North. A signalized intersection would be constructed at Mission Road and Soto Street (at Supreme Court), and the existing intersection at Huntington Drive North and Huntington Drive South would be realigned with Radium Drive. This project was initiated by the City of Los Angeles Department of Public Works Bureau of Engineering Bridge Improvement Program.

A new frontage road, terminating in dual cul-de-sacs would be constructed and the resulting median area between Mission Road and Huntington Drive North would be landscaped. The project may also include the placement of a piece of public art in this landscape area. Both full and partial property acquisitions would be required for construction of the proposed project.

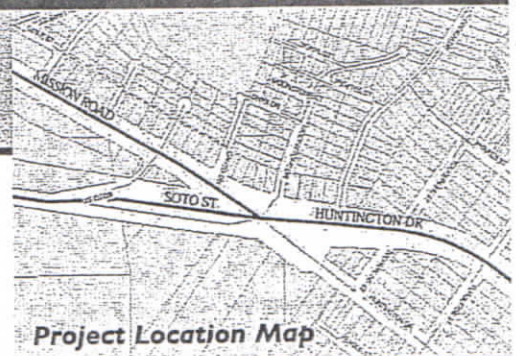
### The Project will benefit the Community by:

- Removing a substandard bridge from public use;
- Improving traffic flow in the area;
- Increasing pedestrian and traffic safety;
- Beautifying the neighborhood by providing green space and landscaping.

### PROJECT SCHEDULE

The Planning phase of the Soto Street Project is underway. The City of Los Angeles has completed its initial study, and the remainder of the schedule includes:

- September 2004: Final Design completion
- May 2005: Start construction
- November 2006: Complete construction



### WE WANT TO HEAR FROM YOU

There will be opportunities to provide feedback to the project team, including Community Meetings. There will also be presentations to local Neighborhood Councils and community organizations. The project team will work in coordination with Council District 14.

### QUESTIONS?

Please call Christine Robert at 213-381-5700 if you have any questions about the project. You can also fax comments to 213-381-5857.



As a covered entity under Title II of the Americans with Disabilities Act, the City of Los Angeles does not discriminate on the basis of disability and upon request will provide reasonable accommodation to ensure equal access to its programs, services and activities.



# COMMUNITY BRIEFING NOTICE

You are cordially invited to attend a community briefing  
for the Soto Street Bridge over Mission Road and  
Huntington Drive Project

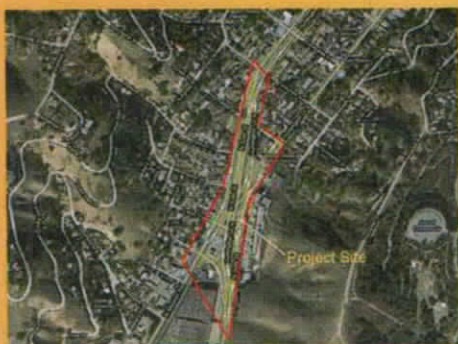
**PURPOSE:** The purpose of the meeting is to share updates,  
construction status, and schedule on the upcoming  
project.

**WHERE:** Huntington Drive Elementary School  
4435 Huntington Drive North  
Los Angeles, CA 90032  
\*Parking is available in the school parking lot.

**WHEN:** Monday, February 4, 2013, 6:00 p.m. - 7:00 p.m.

**CONTACT:** For any questions, please call:  
Council Office 14 - El Sereno Office at (323) 226-1646  
Cora Jackson-Fossett, Public Affairs Office at (213) 978-0333  
George Huang, Bureau of Engineering at (213) 485-2057

As a covered entity under Title II of the American Disabilities Act, the City of Los Angeles does not discriminate on the basis of disability and, upon request, will provide reasonable accommodations to ensure equal access to its programs, services, and activities.





# AVISO DE REUNION DE COMUNIDAD

Están cordialmente invitados a asistir a una reunión informativa para la comunidad para el proyecto del puente de la calle de Soto sobre la calle Misión y Huntington Drive

**PROPÓSITO:** El propósito de la reunión es de compartir las actualizaciones, el estado de la construcción y la programación del proyecto.

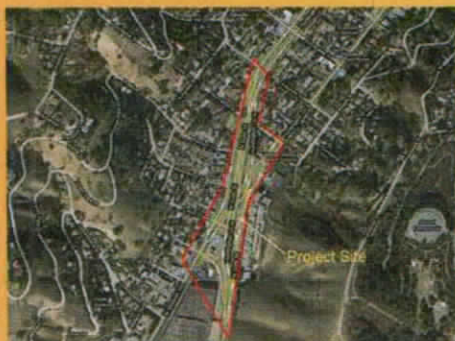
**DONDE:** Huntington Drive Elementary School  
4435 Huntington Drive North  
Los Angeles, CA 90032

\*El estacionamiento esta disponible en el estacionamiento de la escuela.

**CUANDO:** Lunes, febrero 4, 2013, 6:00 p.m. - 7:00 p.m.

**CONTACTO:** Para cualquier pregunta, por favor llame:  
Oficina Concilio 14 - Oficina en El Sereno (323) 226-1646  
Cora Jackson-Fossett, Oficina de asuntos públicos (213) 978-0333  
George Huang, Oficina de ingeniería (213) 485-2057

En relación con el Artículo II del Acto de Americanos con Incapacidades, la Ciudad de Los Angeles no discrimina en base de incapacidad física, y si usted lo pide, la Ciudad proveerá en un nivel razonable igual acceso a sus programas, servicios y actividades.



# SOTO STREET BRIDGE OVER MISSION ROAD AND HUNTINGTON DRIVE PROJECT



## PROJECT DESCRIPTION

The Soto Street Bridge over Mission Road and Huntington Drive Project would remove the Soto Street Bridge, currently extended between Supreme Court and Turquoise Street. The proposed project would reconfigure the streets along Mission Road, Soto Street, Huntington Drive North, and Huntington Drive South to provide major north-south traffic movement on Mission Road and Huntington Drive North. A signalized intersection would be constructed at the intersection at Mission Road and Soto Street, and at the existing intersection at Huntington Drive North and Huntington Drive South.

Two new frontage roads with cul-de-sacs will be constructed for local street access, and the resulting median area between Mission Road and Huntington Drive North would be improved with trees and landscaping. The project was initiated by the City of Los Angeles, Department of Public Works, Bureau of Engineering, Bridge Improvement Division.

## PROJECT FUNDING

- Total Estimated Construction Cost is \$13.1M
  - Federal Highway Bridge Program (HBP) Grant
  - City Matching Funds - Proposition C
  - Metro (MTA) Call for Project Grant

## PROJECT SCHEDULE

The advertising phase of the Soto Street Project is underway. The remainder of the anticipated schedule includes:



- June 2013: Award construction contract
- Fall 2013: Start construction
- Fall 2016: Complete construction



## PROJECT BENEFIT

**The project will benefit the community by:**

- Removing a substandard bridge from public use
- Improving traffic flow and mobility in the region
- Increasing traffic and pedestrian safety
- Beautifying the neighborhood by providing green space with trees and landscaping

## FOR ANY QUESTIONS, PLEASE CALL:

- Council District 14-El Sereno Office at 323.226.1646
- Cora Jackson-Fossett, Public Affairs Office at 213.978.0333
- George Huang, Bureau of Engineering at 213.485.2057

As a covered entity under Title II of the American Disabilities Act, the City of Los Angeles does not discriminate on the basis of disability and, upon request, will provide reasonable accommodations to ensure equal access to its programs, services, and activities.

---

# **Soto Street Bridge Over Mission Road Bridge Removal and Improvement Project**

City of Los Angeles



Department of Public Works  
Bureau of Engineering  
Bridge Improvement Program

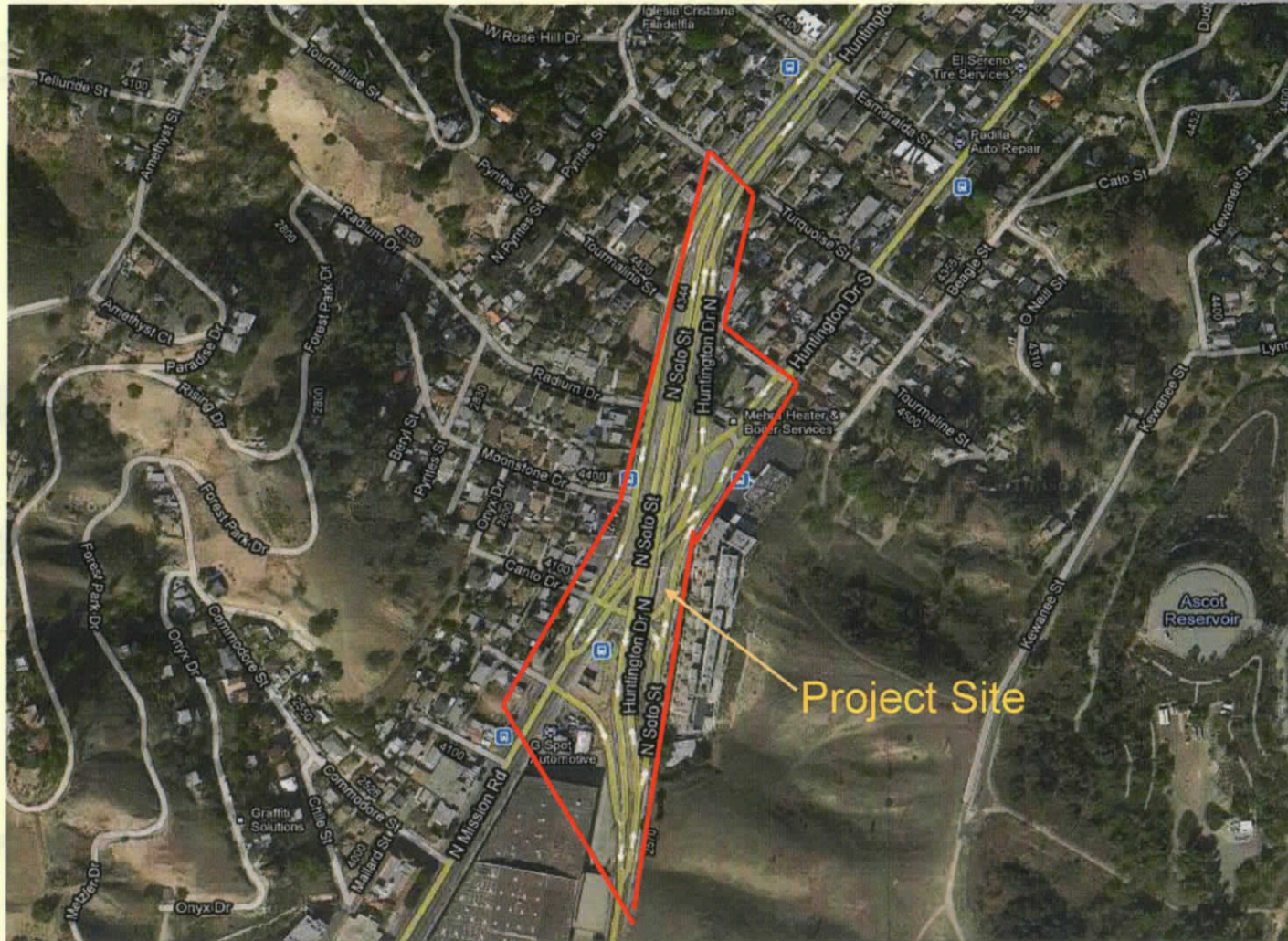


**COMMUNITY MEETING**

**April 20, 2011**

**Barrio Action Youth and Family Center**

# Project Site Location



# Soto Street Bridge

## Background and History

---

- Soto Street Bridge constructed in 1936
- Joint Venture between City of Los Angeles and Pacific Railway Company to enhance public safety
- Grade separation for the Pasadena Short Line of the Pacific Railway System
- Railroad tracks removed in early 1960's and converted for automobile use
- Configuration - two northbound lanes and a single southbound lane
- Limited roadway width between existing bridge piers

# Site Characteristics

---

- Located in El Sereno and Montecito Heights area
- Within Northeast Los Angeles Community Plan
- Designates Huntington Drive, Mission Road and Soto Street in the project area as routes for Class II bike lanes
- Surrounding topography is moderately sloping
- Commercial land uses and single-family residences
- Undeveloped hillside largely comprised of open space



# Project Description

---

- Remove Soto Street Bridge
- Construct 2 new signalized intersections
  - Soto St and Mission Rd/Huntington Drive
  - Huntington Dr and Huntington Dr South/Radium Dr
- Construct dual new frontage roads with cul-de-sacs
- Provide green space, landscaping and tree planting

# Objectives of Bridge Removal

---

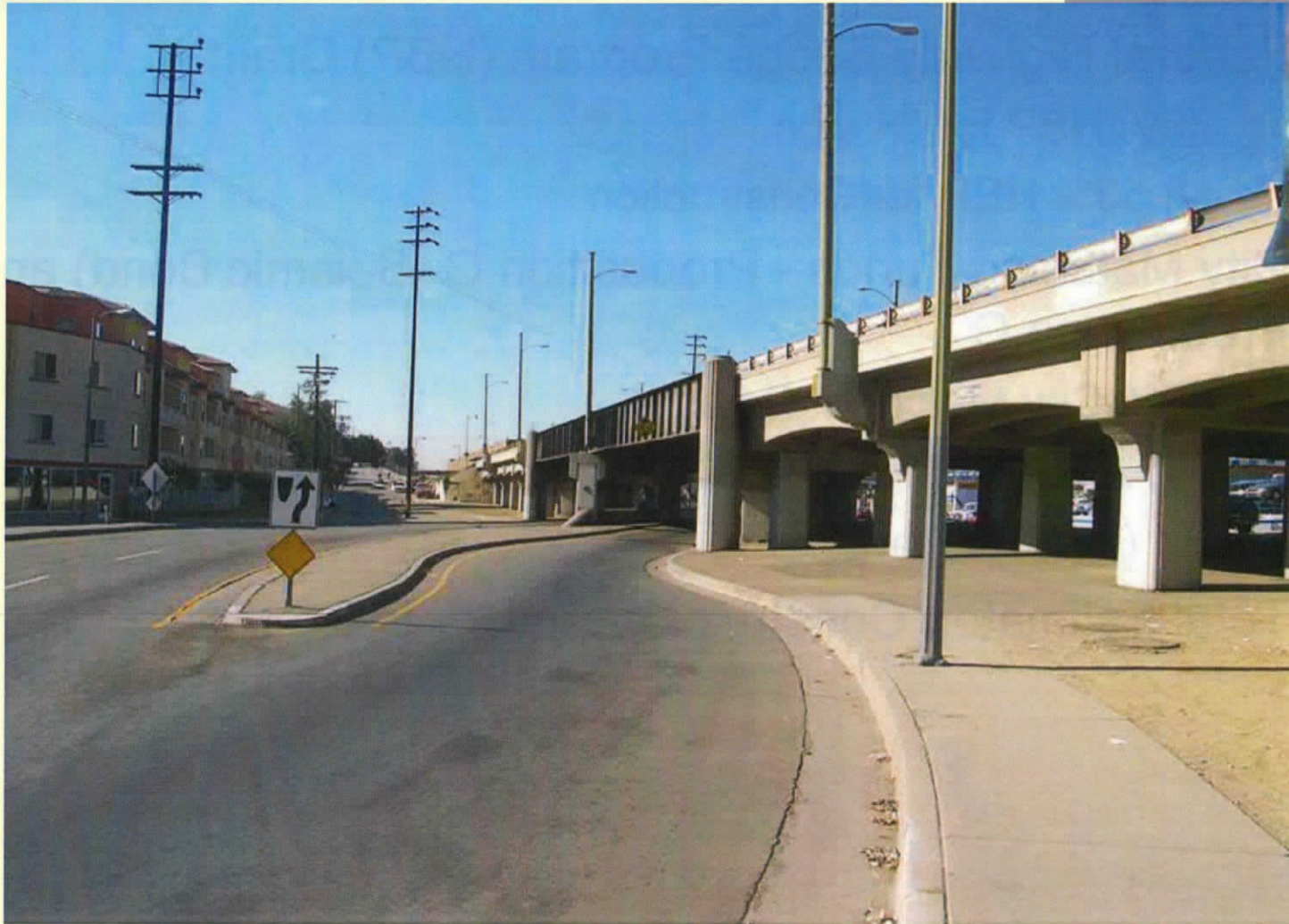
- Remove existing functional obsolete bridge (Caltrans Bridge Inspection Report)
  - Inadequate vertical and horizontal clearances,
  - Insufficient curb-to-curb width
  - Substandard bridge railings
- Improve traffic flow and mobility in the region
- Increase traffic and pedestrian safety
- Remove community barrier (the Bridge)
- Beautify the neighborhood by providing green space and landscaping

# Project Funding

---

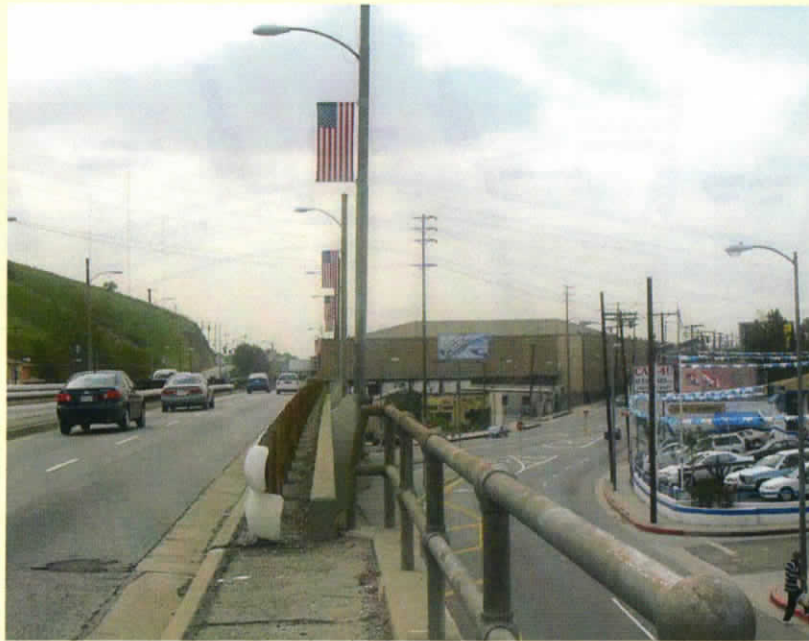
- Federal Highway Bridge Program (HBP) Grant
  - 80% HBP for Design
  - 88.53% HBP for Construction
- City Matching Funds - Proposition G (Seismic Bond) and Proposition C
  - 20% City Match for Design
  - 11.47% City Match for Construction
- Metro (MTA) Grant
- Total Estimated Construction Cost is \$12.6 Million

# Soto Street Bridge

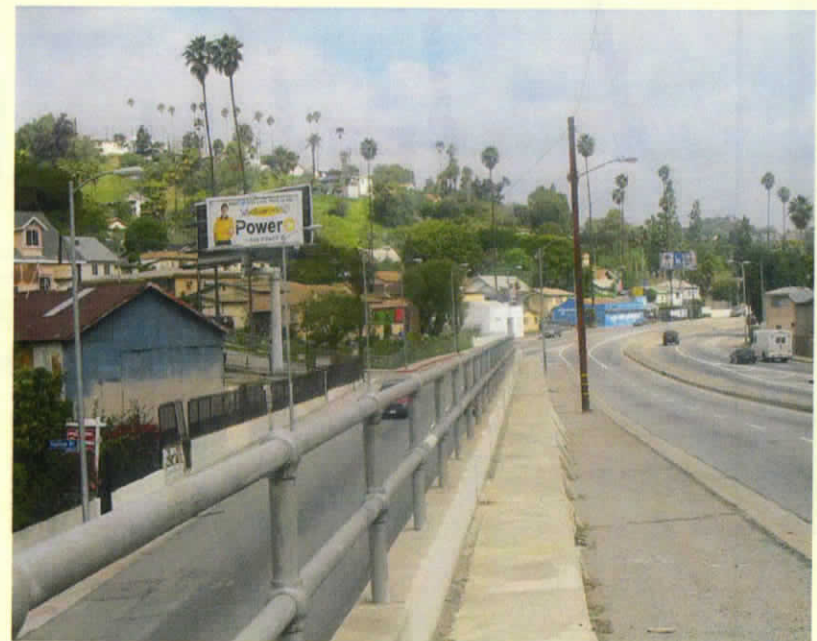


# Soto Street Bridge

---

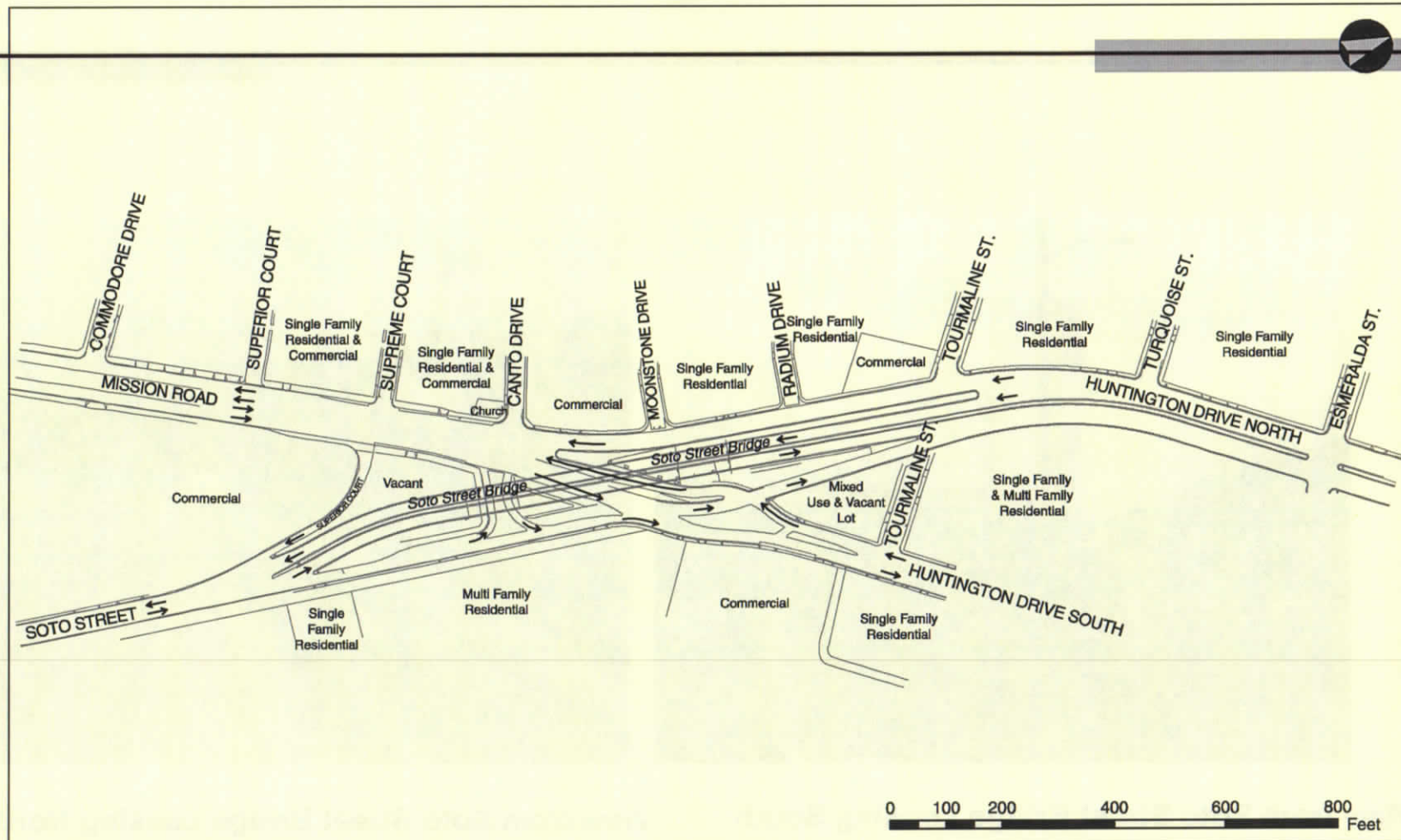


View from Soto Street Bridge Looking South



View from Soto Street Bridge Looking North

# Existing Conditions



Source: HDR Engineering, Inc., 2002. Myra L. Frank & Associates, Inc., 2003.

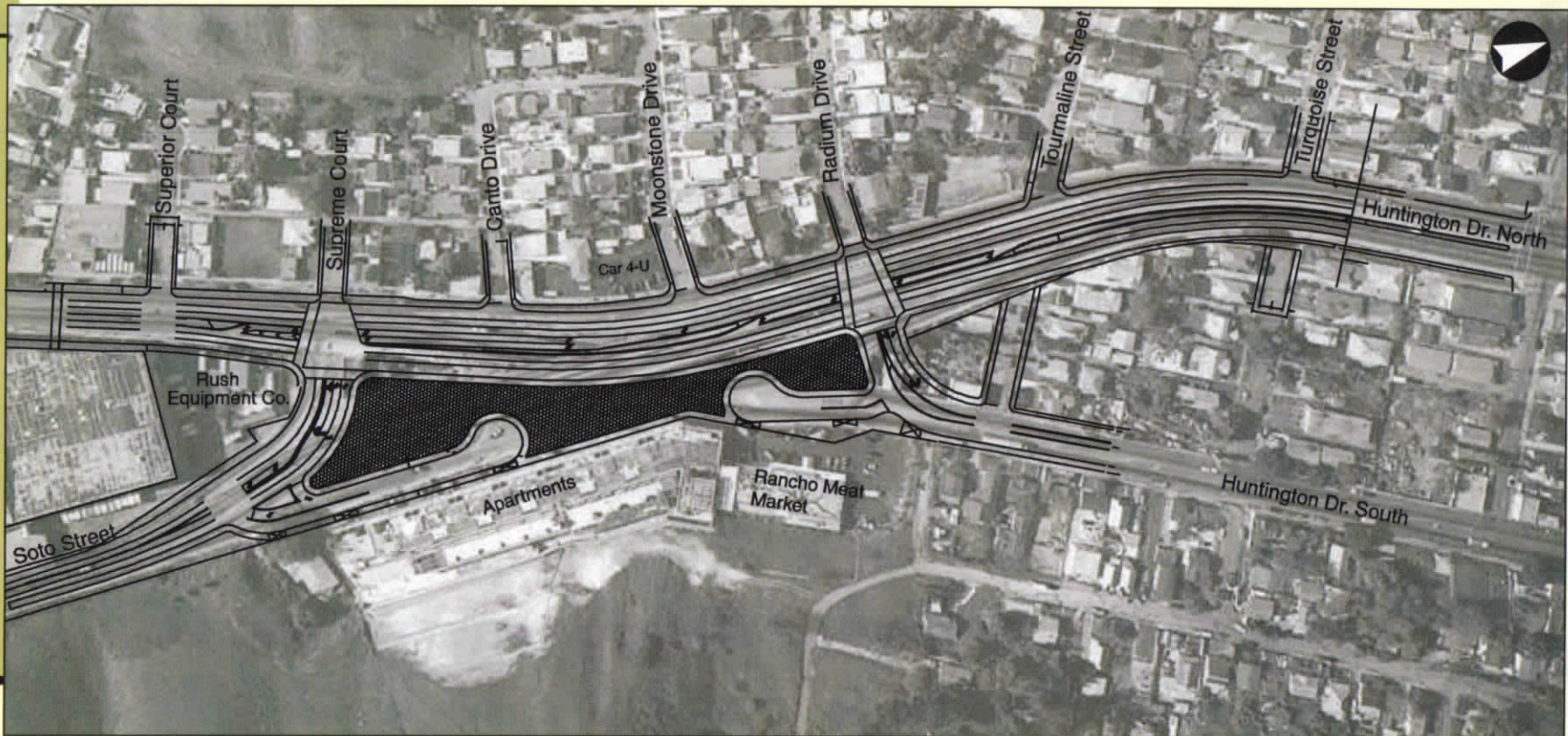
Soto Street Bridge over Mission Road and Huntington Drive South

Figure 3: Existing Conditions

801

109

# Proposed Project



Source: ACT Consulting Engineers, Inc., 2002; Myra L. Frank & Associates, Inc., 2003.

# Proposed Project Rendering

---

## Soto – Before and After Project Improvements



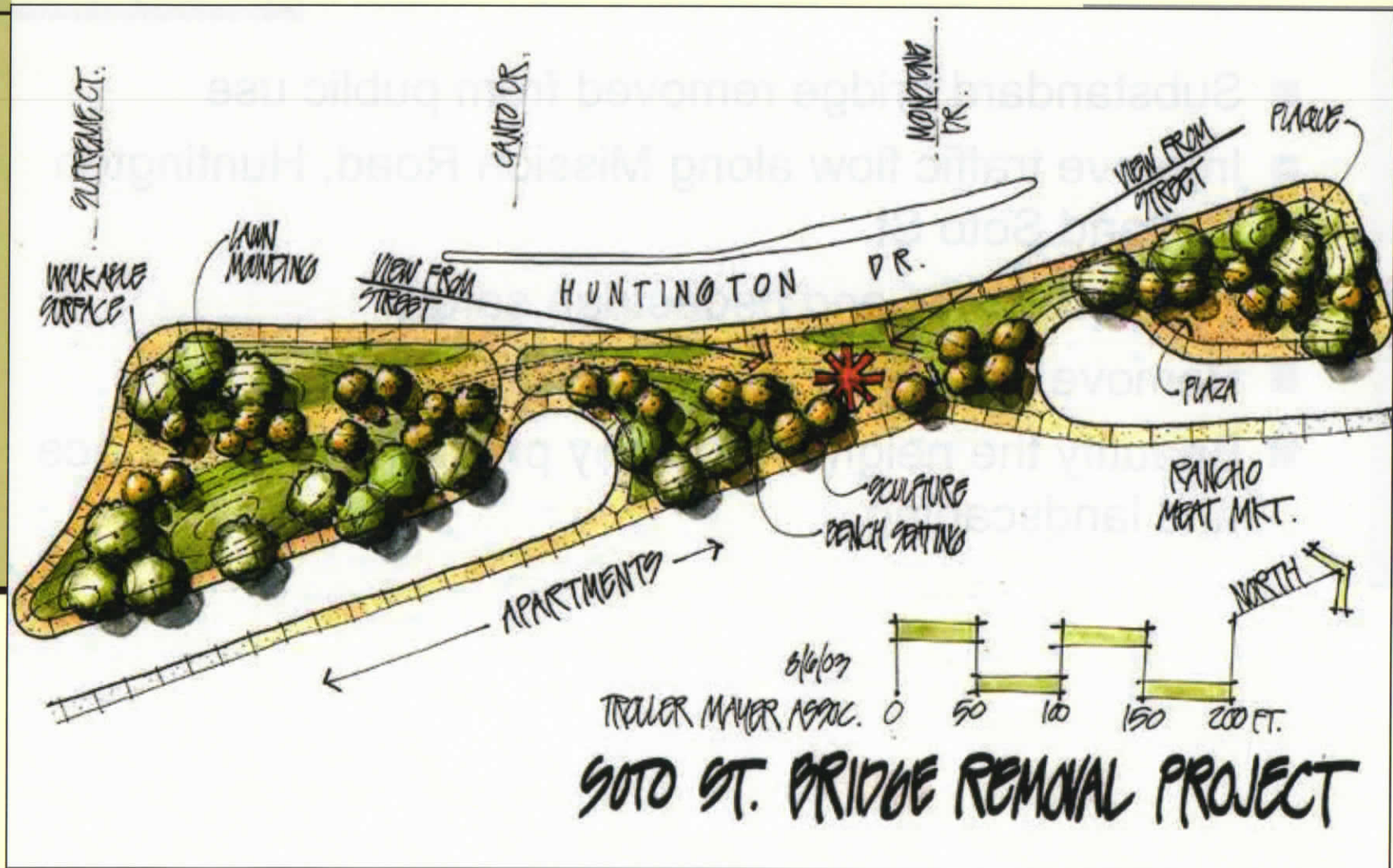
Existing Conditions



Future Conditions with Project Improvements



# Landscape



# Project Benefits for Neighborhood Communities

---

- Substandard bridge removed from public use
- Improve traffic flow along Mission Road, Huntington Dr., and Soto St.
- Increase traffic and pedestrian safety
- Remove the barrier dividing the community
- Beautify the neighborhood by providing green space and landscaping

# Estimated Project Schedule

---

- Design - December 2011
- Right-of-Way – January 2012
- Begin Construction - September 2012
- End Construction - December 2014

# Traffic Control

---

- 3-stage traffic control per LADOT will be implemented during construction
- At least one traffic lane in each direction will be maintained at all times

# For more information, questions or comments please contact:

---

- Public Affairs Office
  - 213.978.0333 / office
  - 213.978.0332 / fax
- Bureau of Engineering
  - George Huang
  - 213.485.2057 / office

# Questions/Answers & Comments

---

- Thank you for your participation and comments.