
Soto Street Bridge Over Mission Road Bridge Removal and Improvement Project

City of Los Angeles



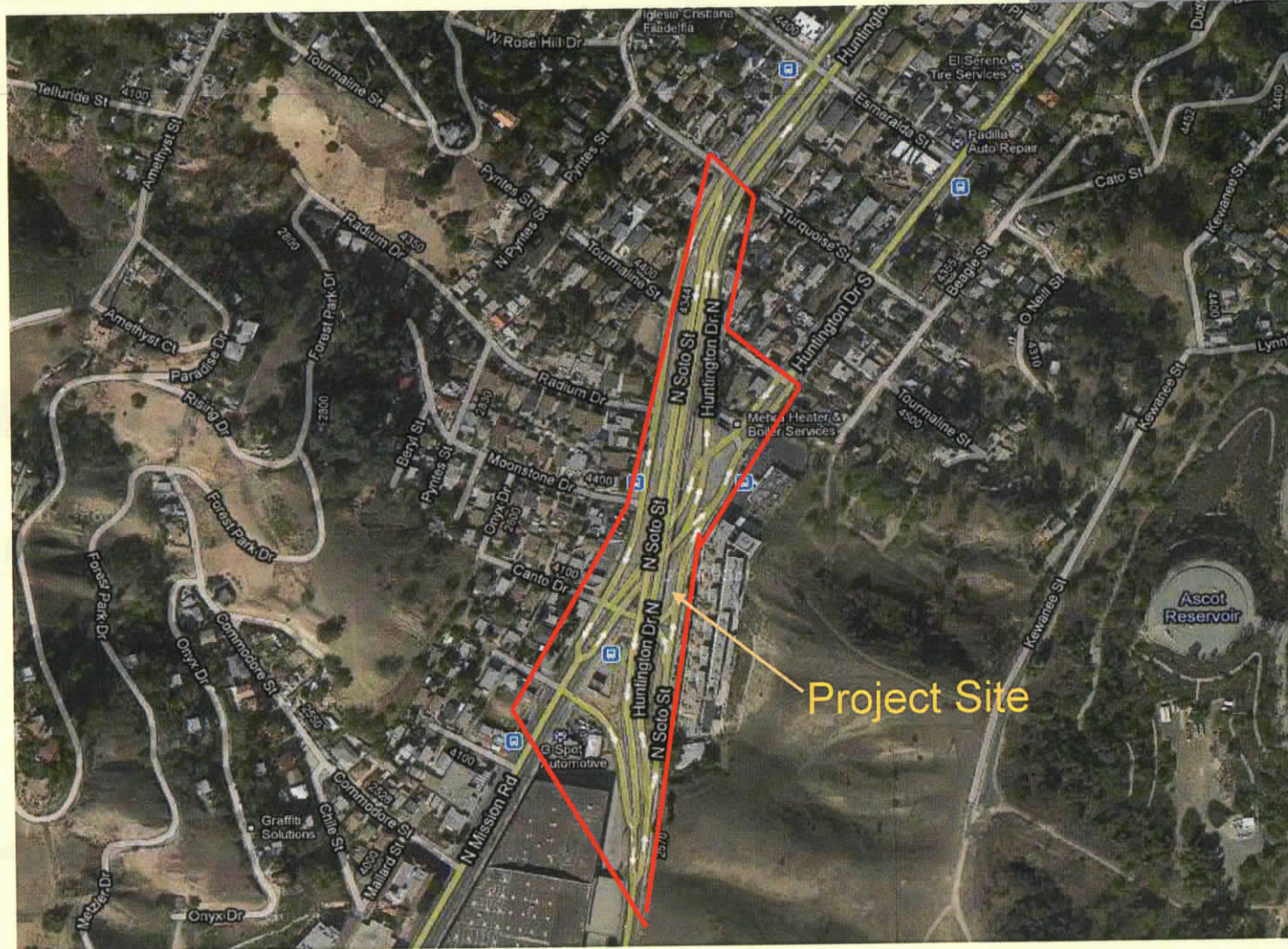
Department of Public Works
Bureau of Engineering
Bridge Improvement Program



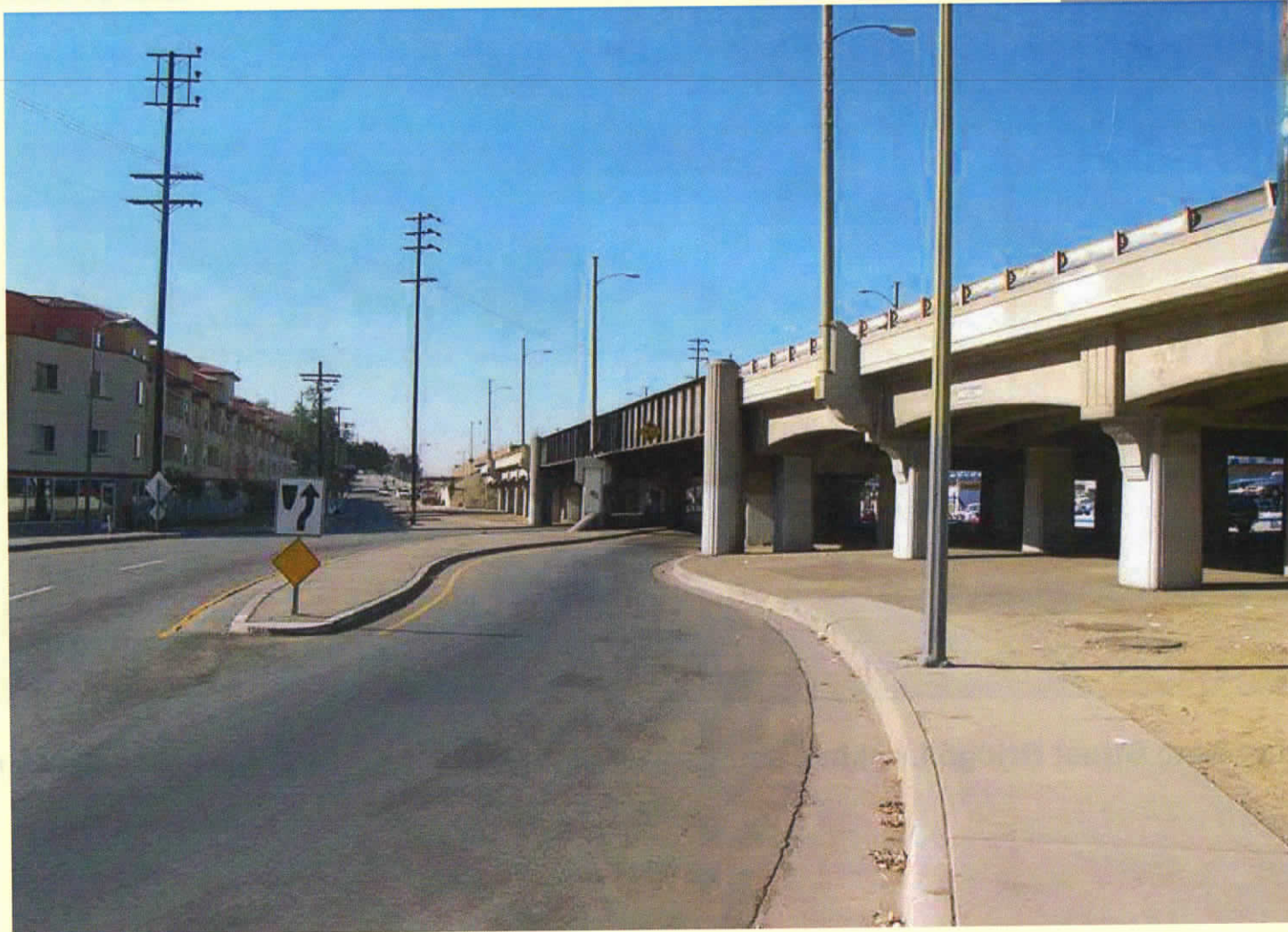
**HILLSIDE VILLAGE
COMMUNITY MEETING**

August 9, 2012

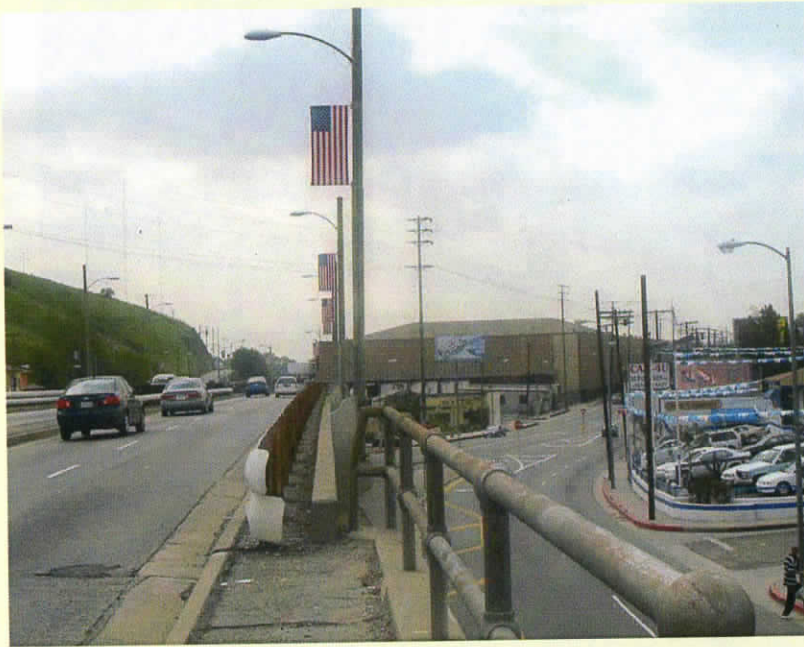
Project Site Location



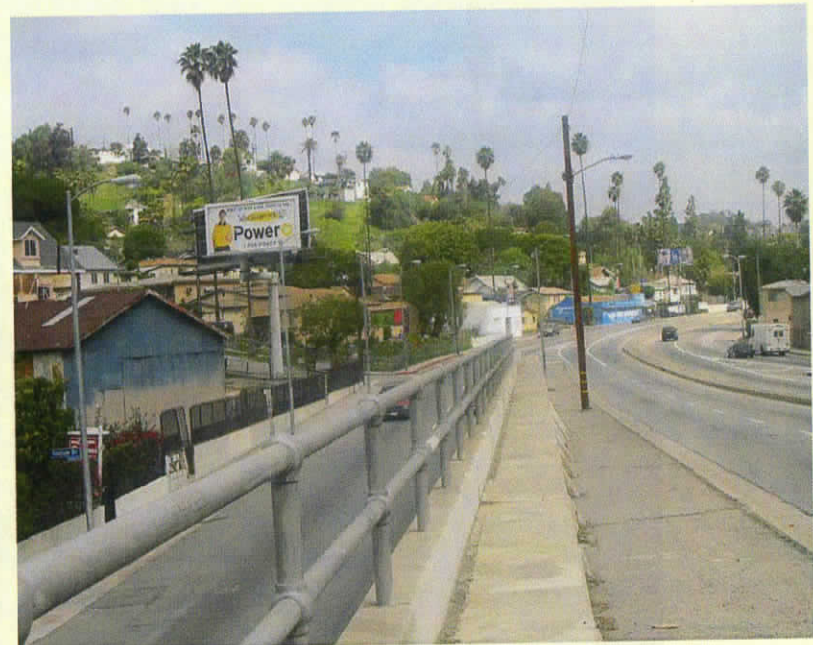
Soto Street Bridge



Soto Street Bridge



View from Soto Street Bridge Looking South



View from Soto Street Bridge Looking North

Soto Street Bridge

Background and History

- Soto Street Bridge constructed in 1936
- Joint Venture between City of Los Angeles and Pacific Railway Company to enhance public safety
- Grade separation for the Pasadena Short Line of the Pacific Railway System
- Railroad tracks removed in early 1960's and converted for automobile use
- Configuration - single northbound lane and a single southbound lane
- Limited roadway width between existing bridge piers

Site Characteristics

- Located in Council District 14
- Within Northeast Los Angeles Community Plan
- Designates Huntington Drive, Mission Road and Soto Street in the project area as routes for Class II bike lanes
- Surrounding topography is moderately sloping
- Commercial land uses and single-family residences
- Undeveloped hillside largely comprised of open space

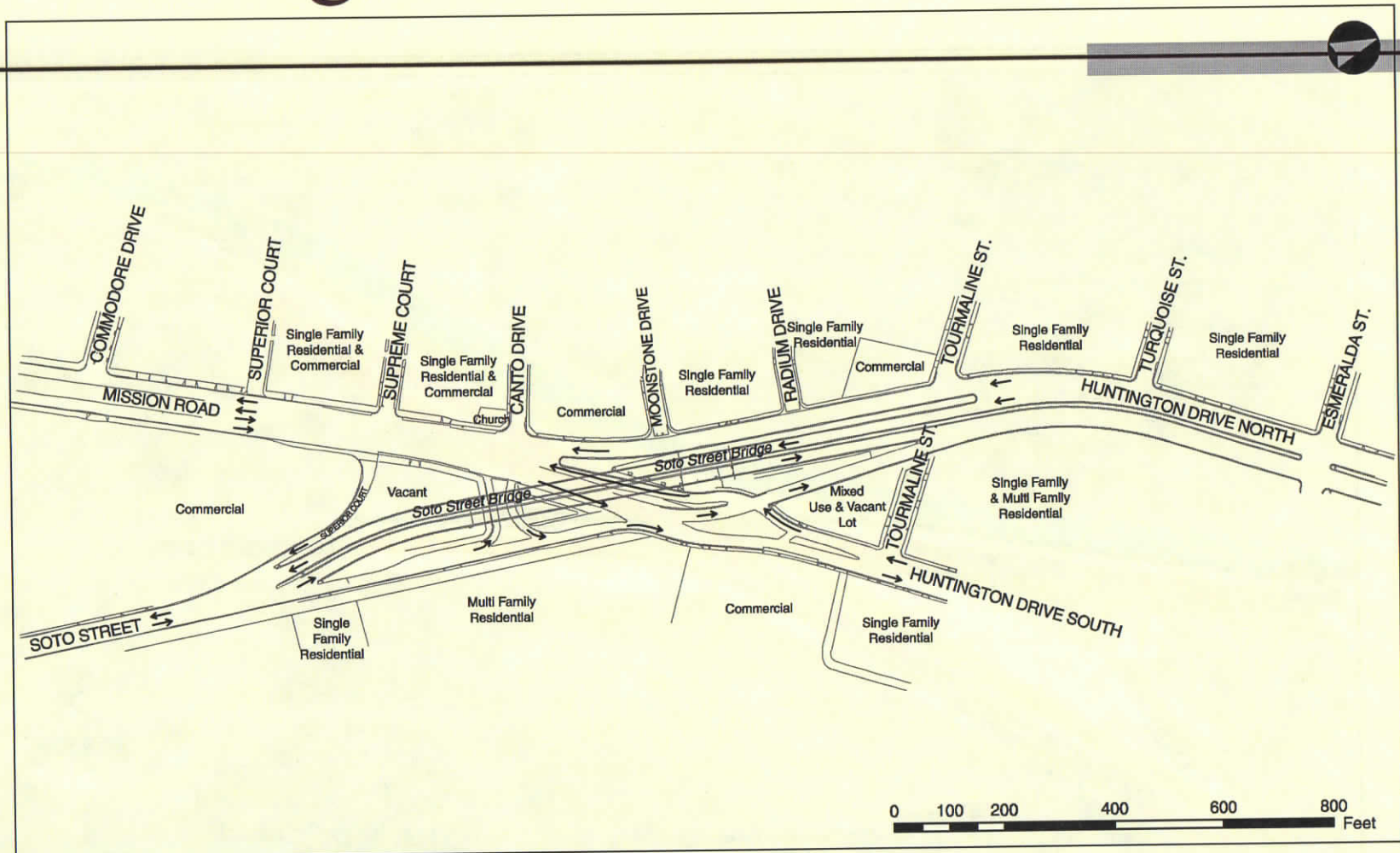
Project Description

- Remove Soto Street Bridge
- Construct 2 new signalized intersections
 - Soto St and Mission Rd/Huntington Drive
 - Huntington Dr and Huntington Dr South/Radium Dr
- Construct dual new frontage roads with cul-de-sacs
- Provide green space, landscaping and tree planting

Objectives of Bridge Removal

- Remove existing functional obsolete bridge (Caltrans Bridge Inspection Report)
 - Inadequate vertical and horizontal clearances,
 - Insufficient curb-to-curb width
 - Substandard bridge railings
- Improve traffic flow and mobility in the region
- Increase traffic and pedestrian safety
- Remove community barrier (the Bridge)
- Beautify the neighborhood by providing green space and landscaping

Existing Conditions

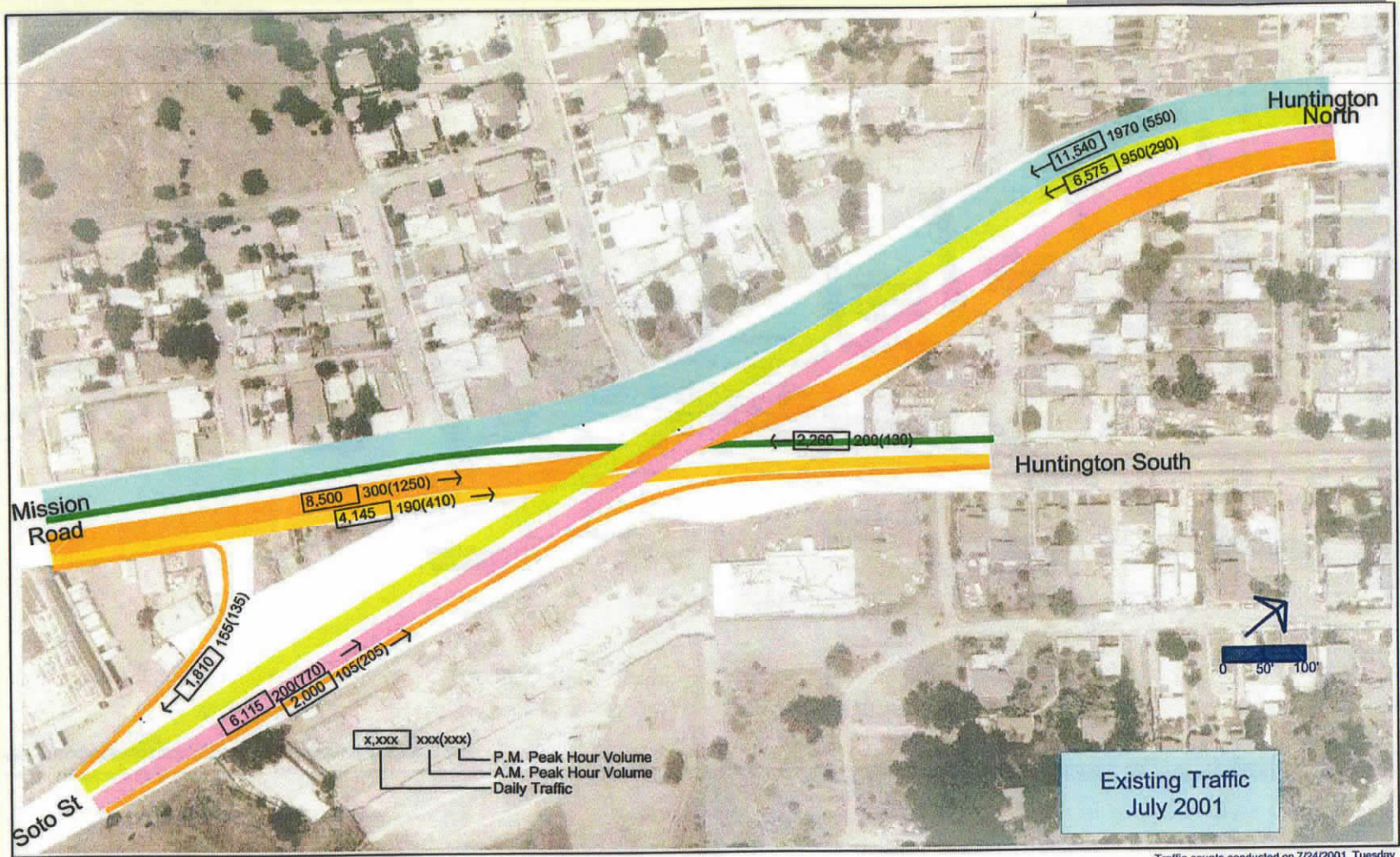


Source: HDR Engineering, Inc., 2002. Myra L. Frank & Associates, Inc., 2003.

Soto Street Bridge over Mission Road and Huntington Drive South

Figure 3: Existing Conditions

Existing Traffic Pattern



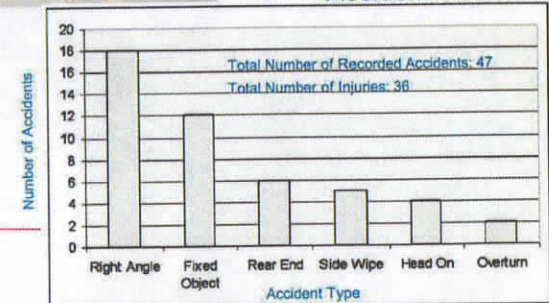
Existing Traffic Conditions

Existing Conditions

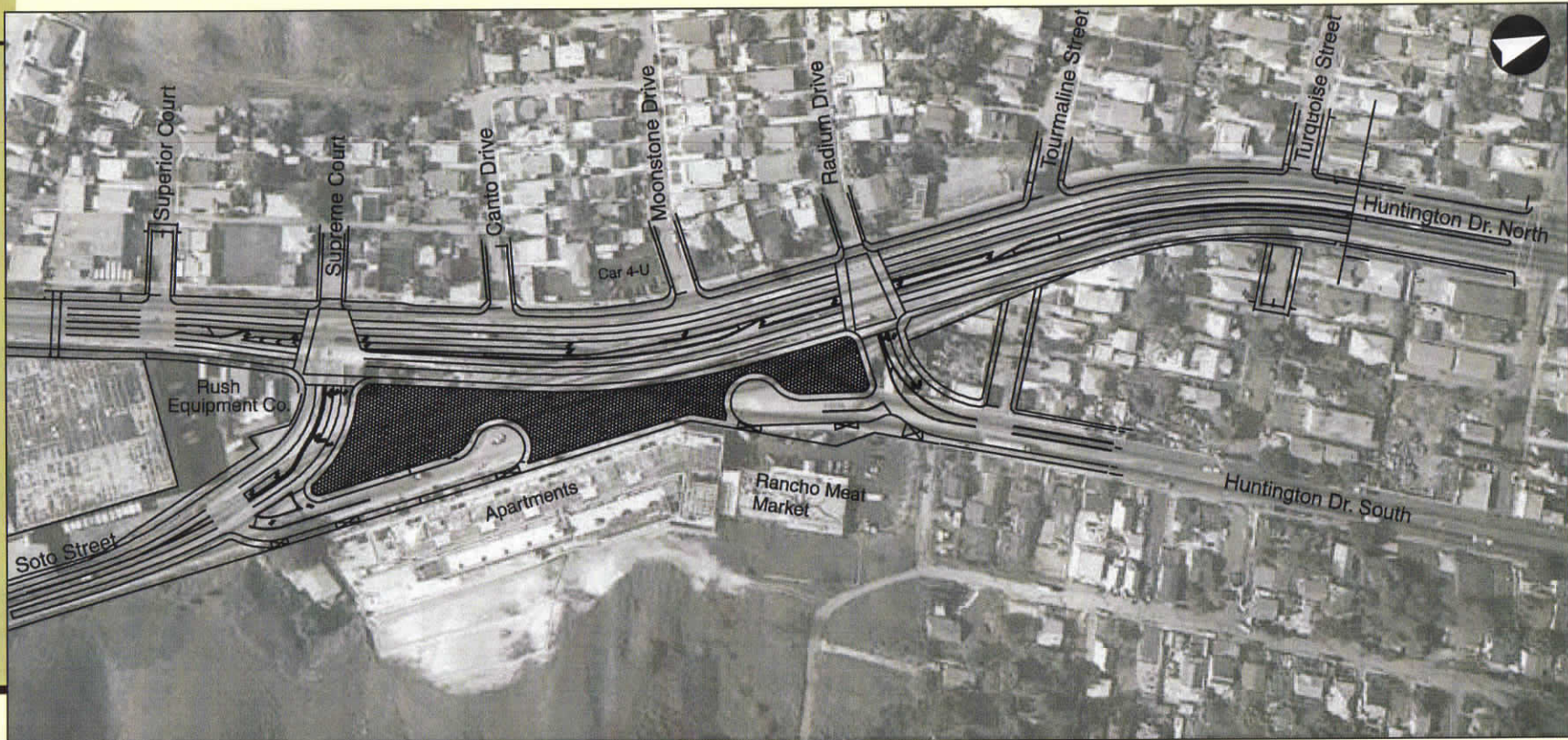
Exhibit 3
8/24/2001



1994 - 2000 Accident Records



Proposed Project



Source: ACT Consulting Engineers, Inc., 2002; Myra L. Frank & Associates, Inc., 2003.

Soto Street Bridge over Mission Road and Huntington Drive South

Figure 4: Proposed Project

Proposed Project Rendering

Soto – Before and After Project Improvements

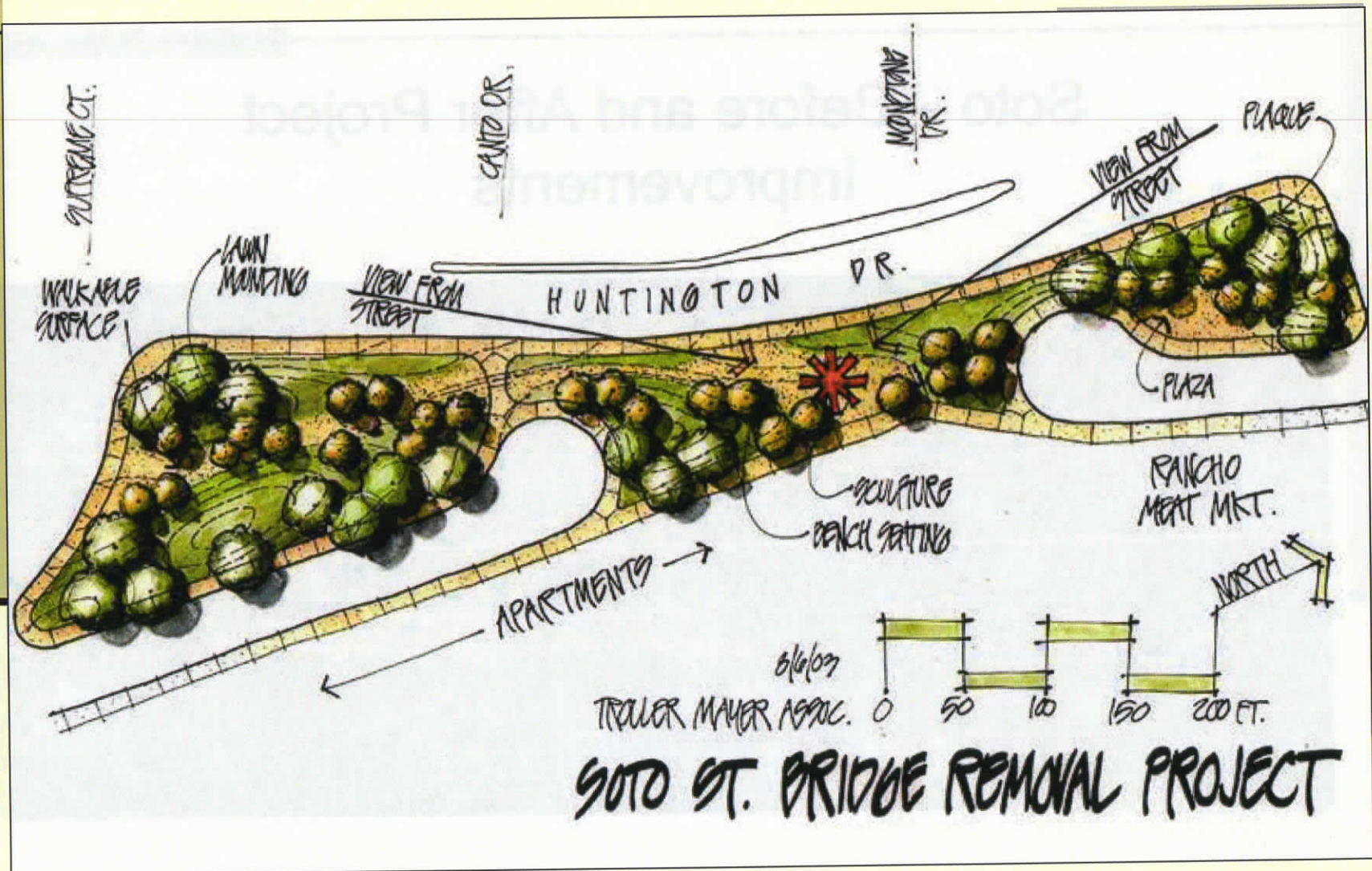


Existing Conditions



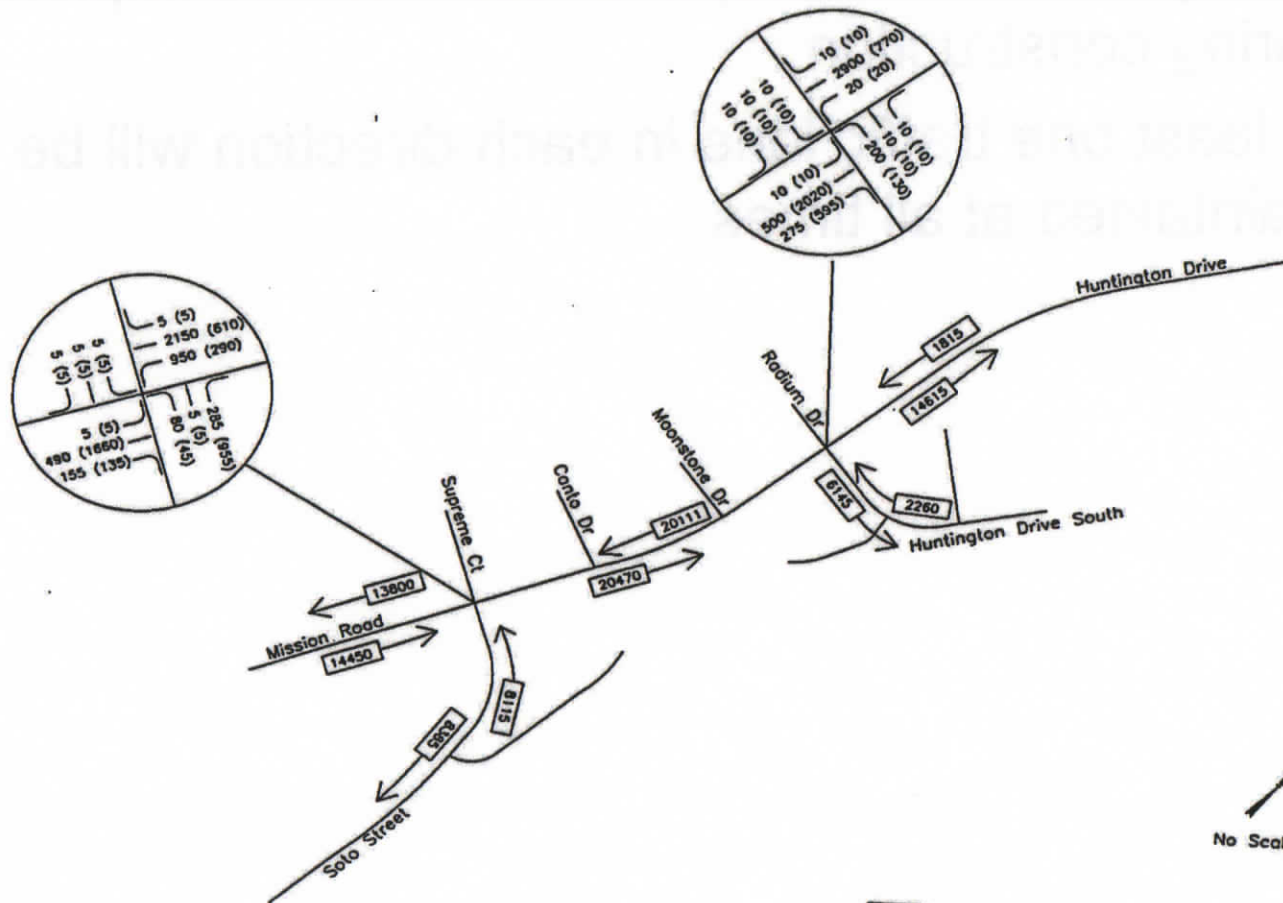
Future Conditions with Project Improvements

Landscape



Estimated Completion Traffic Volume

Soto Street Bridge Removal Project
 Completion Year Traffic Volumes



No Scale

XXXX Average Daily Traffic Volumes
 xx (xx) AM (PM) Peak Hour Traffic Volumes

Traffic Control

- 3-stage traffic control per LADOT will be implemented during construction
- At least one traffic lane in each direction will be maintained at all times

Project Funding

- Federal Highway Bridge Program (HBP) Grant
 - 80% HBP for Design
 - 88.53% HBP for Construction
- City Matching Funds - Proposition G (Seismic Bond) and Proposition C
 - 20% City Match for Design
 - 11.47% City Match for Construction
- Metro (MTA) Grant
- Total Estimated Construction Cost is \$12.6 Million

Estimated Project Schedule

- Environmental

- **California Environmental Quality Act (CEQA)** – Negative Declaration Adopted by City Council on December 4, 2004
- **National Environmental Quality Act (NEPA)** – Categorical Exemption Approved on Feb. 25, 2003

- Design - December 2011

- Right-of-Way – June 2012

- Bid & Award – September 2012

- Begin Construction - February 2013

- End Construction – March 2015

Project Benefits for Neighborhood Communities

- Substandard bridge removed from public use
- Improve traffic flow along Mission Road, Huntington Dr., and Soto St.
- Increase traffic and pedestrian safety
- Remove the barrier dividing the community
- Beautify the neighborhood by providing green space and landscaping

For more information, questions or
comments please contact:

■ Bureau of Engineering

- George Huang
- Office: 213.485.2057
- Email: george.huang@lacity.org
- Website: <http://eng.lacity.org/>

Questions & Comments

Thank you for your participation.