

Soto Street Bridge Over Mission Road Bridge Removal and Improvement Project

City of Los Angeles

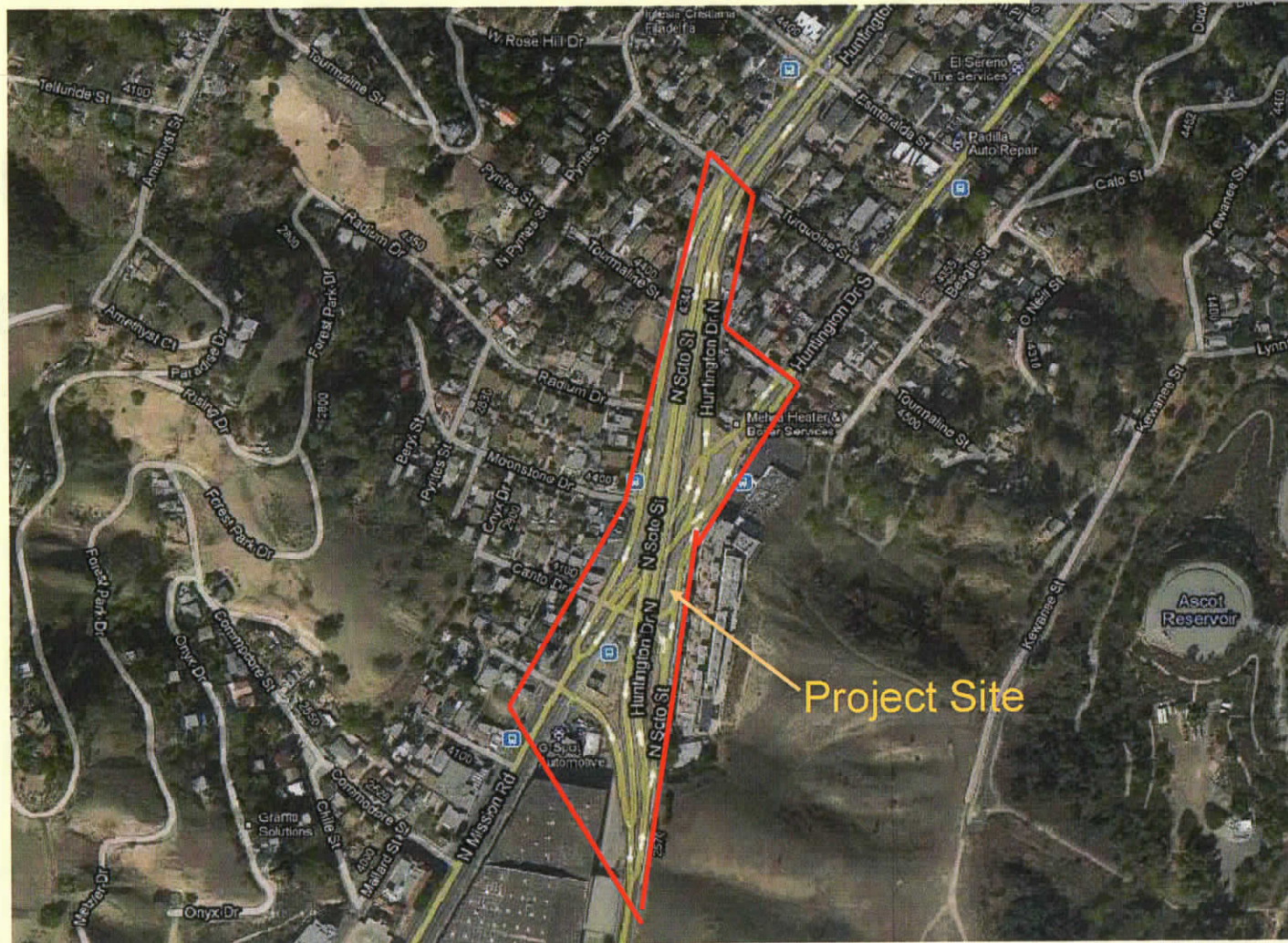


Department of Public Works
Bureau of Engineering
Bridge Improvement Division

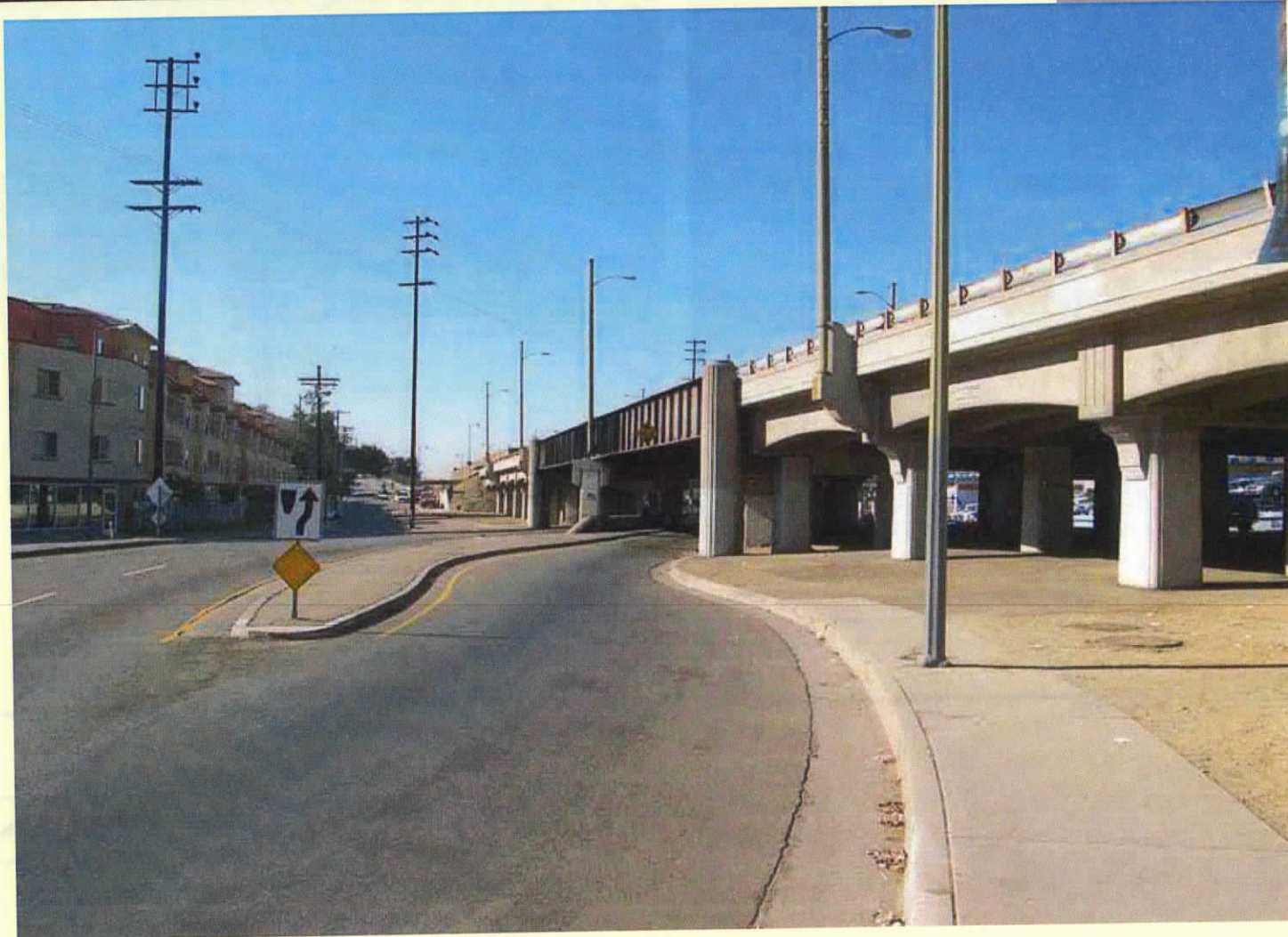


Huntington Drive Elementary School
COMMUNITY MEETING
February 4, 2013

Project Site Location



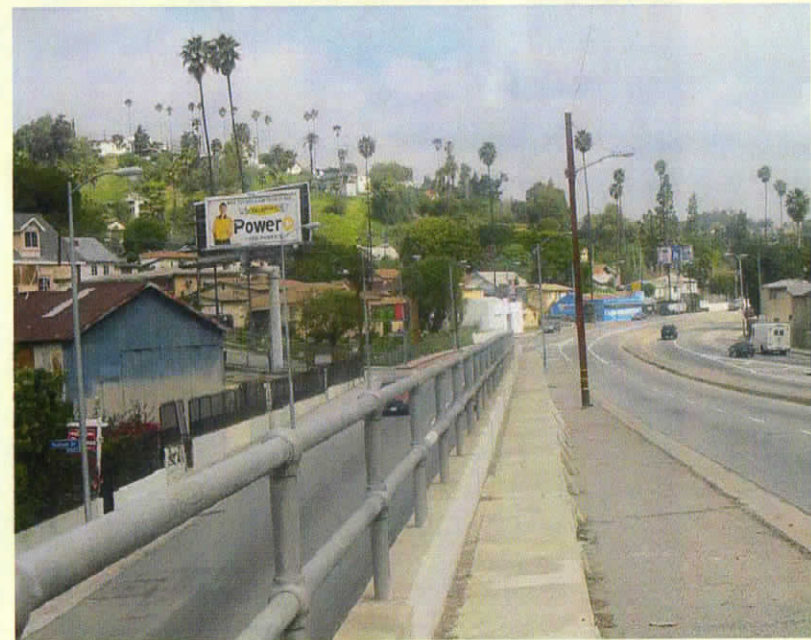
Soto Street Bridge



Soto Street Bridge



View from Soto Street Bridge Looking South



View from Soto Street Bridge Looking North

Past Public Outreach

No.	Date	Mtg. Time	Meeting Held	Meeting Location
1	7/18/2002	6:00 PM	El Soreno Transportation Projects Meeting	El Sereno Senior Citizen Center (4818 Klamath Place)
2	3/24/2004	6:00 PM	Community Meeting	Unknown
3	4/26/2004	5:00 PM	Community Meeting - Questions & Answers Discussion for Project Environmental Documents	Lincoln Park Recreation Center (3501 Valley Blvd)
4	7/7/2004	6:00 PM	Community Meeting	El Sereno Senior Citizen Center (4818 Klamath Place)
5	4/20/2011	6:00 PM	LA-32 Neighborhood Council - Land Use & Development Committee	Barrio Action Family Center (4927 Huntington Dr. Conf. Rm.)
6	7/27/2011	6:00 PM	LA-32 Neighborhood Council - Land Use & Development Committee	CD 14 Constituent Center (4927 Huntington Dr. Conf. Rm.)
7	2/6/2012	6:00 PM	Rose Hills Homeowners Association	Rose Hills Recreation Center (4530 Mercury Ave)
8	2/16/2012	6:00 PM	LA-32 Neighborhood Council - Town Hall Meeting	El Sereno Senior Citizen Center (4818 Klamath Place)
9	8/9/2012	7:00 PM	Hillside Village Community Meeting	Absolute Tow (4760 Valley Blvd.)
10	10/10/2012	2:00 PM	CD 14 El Sereno Field Office	Barrio Action Family Center (4927 Huntington Dr. Conf. Rm.)

Soto Street Bridge

Background and History

- Soto Street Bridge constructed in 1936
- Joint Venture between City of Los Angeles and Pacific Railway Company to enhance public safety
- Grade separation for the Pasadena Short Line of the Pacific Railway System
- Railroad tracks removed in early 1960's and converted for automobile use
- Configuration - single northbound lane and a single southbound lane
- Limited roadway width between existing bridge piers

Site Characteristics

- Located in Council District 14
- Within Northeast Los Angeles Community Plan
- Designates Huntington Drive, Mission Road and Soto Street in the project area as routes for Class II bike lanes
- Surrounding topography is moderately sloping
- Commercial land uses and single-family residences
- Undeveloped hillside largely comprised of open space

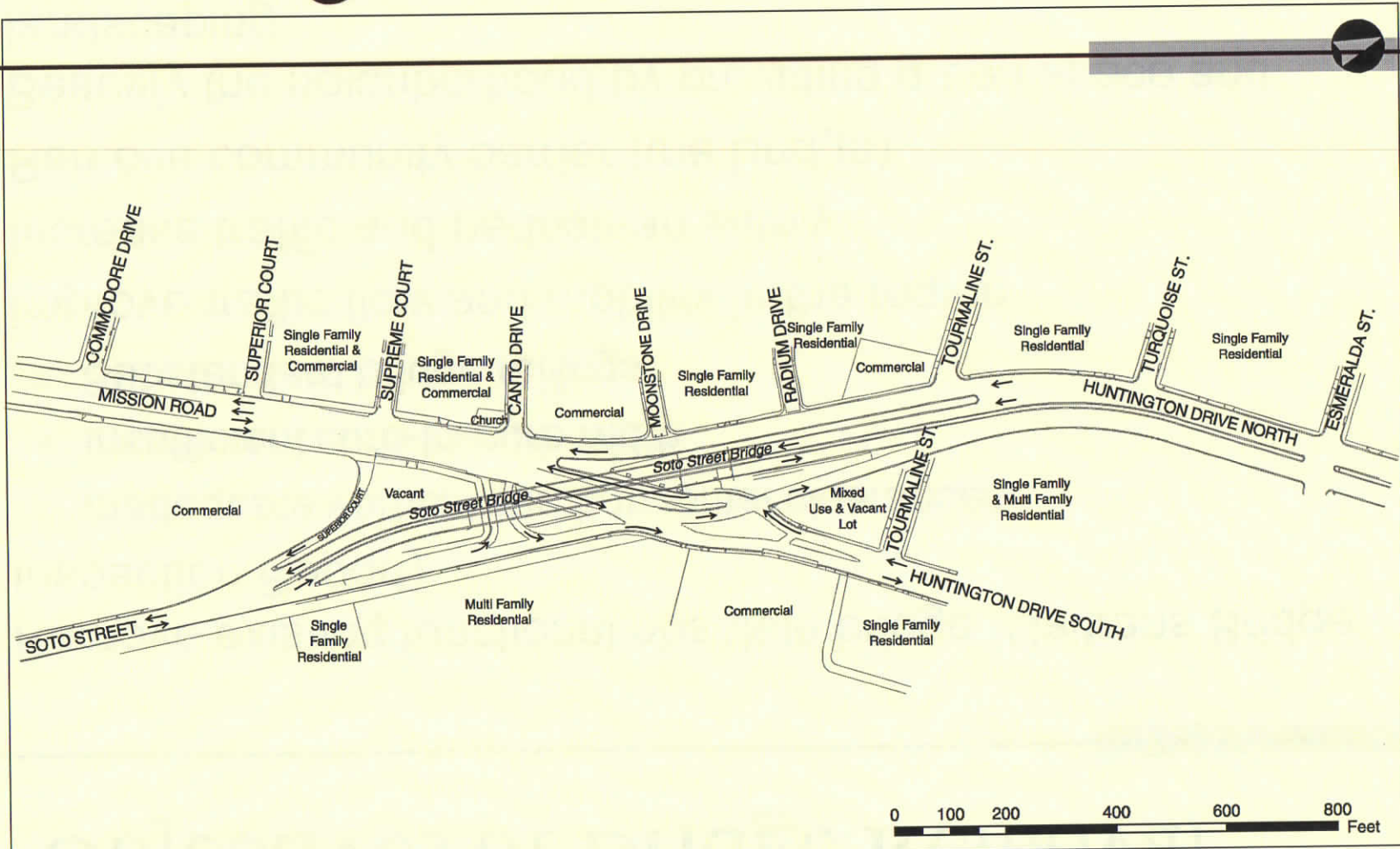
Project Description

- Remove Soto Street Bridge
- Construct 2 new signalized intersections
 - Soto St and Mission Rd/Huntington Drive
 - Huntington Dr and Huntington Dr South/Radium Dr
- Construct dual new frontage roads with cul-de-sacs
- Provide green space, landscaping and tree planting

Objectives of Bridge Removal

- Remove existing functional obsolete bridge (Caltrans Bridge Inspection Report)
 - Inadequate vertical and horizontal clearances,
 - Insufficient curb-to-curb width
 - Substandard bridge railings
- Improve traffic flow and mobility in the region
- Increase traffic and pedestrian safety
- Remove community barrier (the Bridge)
- Beautify the neighborhood by providing green space and landscaping

Existing Conditions

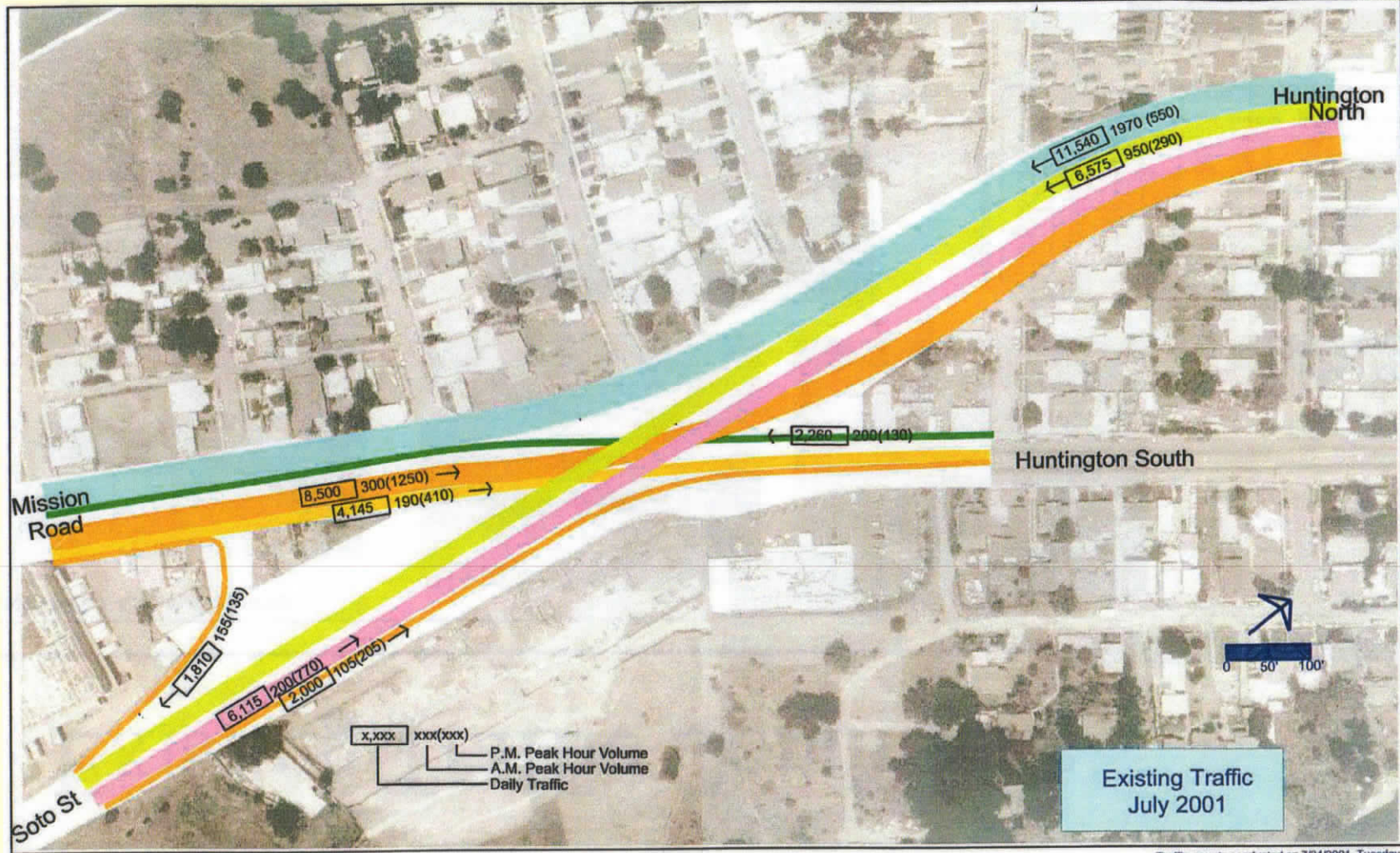


Source: HDR Engineering, Inc., 2002. Myra L. Frank & Associates, Inc., 2003.

Soto Street Bridge over Mission Road and Huntington Drive South

Figure 3: Existing Conditions

Existing Traffic Pattern



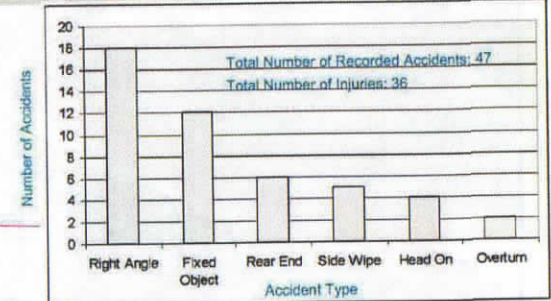
Existing Traffic Conditions

Existing Conditions

Exhibit 3
3/24/2001



1994 - 2000 Accident Records

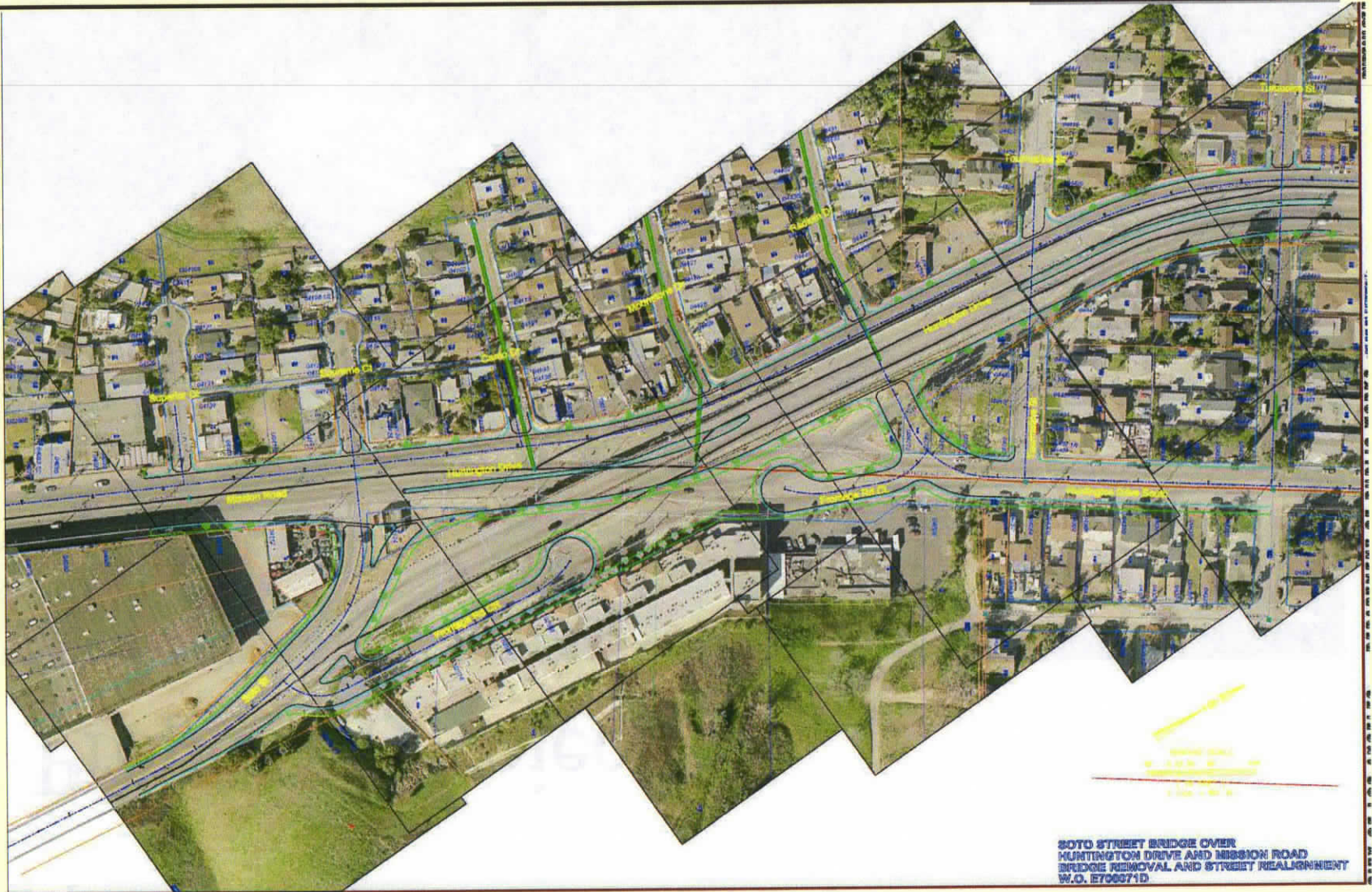


Proposed Project



Source: ACT Consulting Engineers, Inc., 2002; Myra L. Frank & Associates, Inc., 2003.

Proposed Project



Proposed Project Rendering

Soto – Before and After Project Improvements



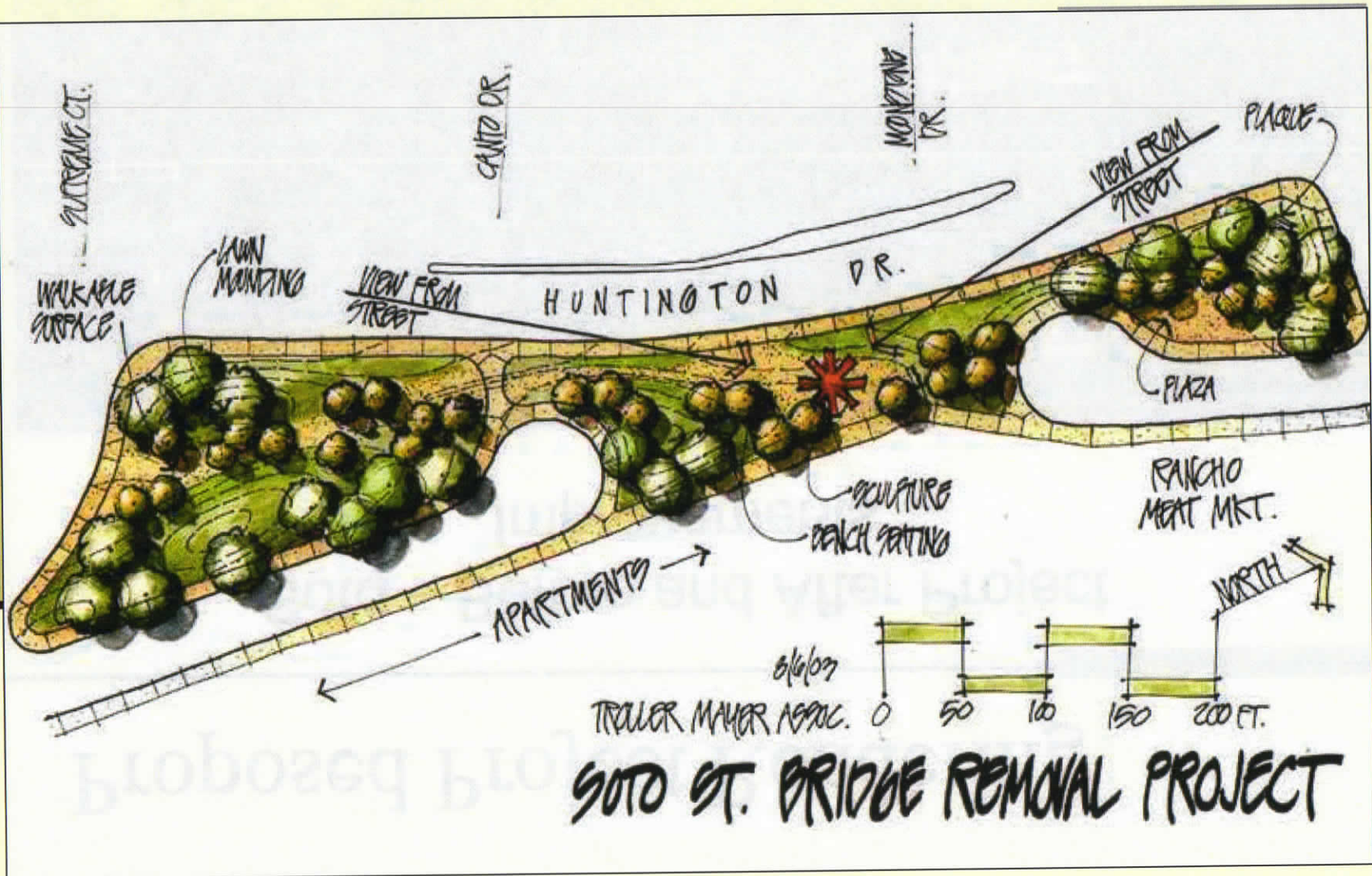
Existing Conditions



Future Conditions with Project Improvements

HDR

Landscape



TREES TYPES AND LOCATIONS WITHIN THE PROJECT CORRIDOR

Street Trees (Sidewalk/Parkway Outside of Apartment Building Frontage)



Pink Trumpet
(*Handroanthus Heterophylla*)



Eastern Redbud
(*Cercis Canandensis*)



Evergreen Pear
(*Pyrus Kamakami*)

**TREES TYPES AND LOCATIONS
WITHIN THE PROJECT CORRIDOR**

Street Trees

(In Front of Apartment)



**Lemon Gum
(Corymbia Citriodora)**

TREES TYPES AND LOCATIONS WITHIN THE PROJECT CORRIDOR

Peninsula Islands



**White Adler
(Alnus Rhombifolia)**



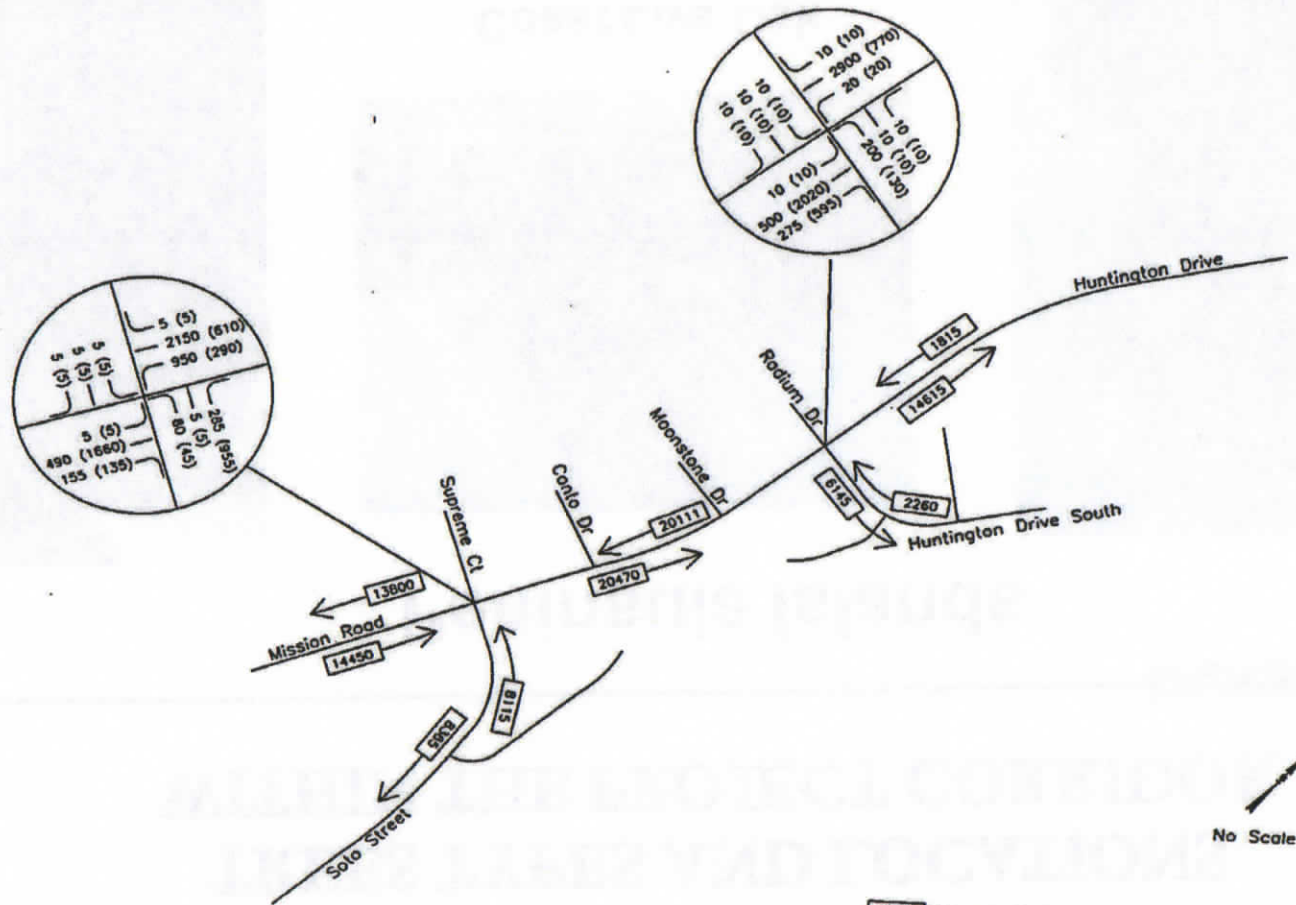
**Coast Live Oak
(Quercus Agrifolia)**



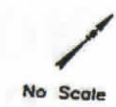
**California Sycamore
(Platanus Racemosa)**

Estimated Completion Traffic Volume

Soto Street Bridge Removal Project
Completion Year Traffic Volumes



XXXX Average Daily Traffic Volumes
xx (xx) AM (PM) Peak Hour Traffic Volumes



Traffic Control

- 3-stage traffic control per LADOT will be implemented during construction
- At least one traffic lane in each direction will be maintained at all times
- Pedestrian access shall be maintained at all times
- Emergency and City services will be notified of traffic control prior to construction

Project Funding

- Federal Highway Bridge Program (HBP) Grant
 - 80% HBP for Design
 - 88.53% HBP for Construction
- City Matching Funds - Proposition G (Seismic Bond) and Proposition C
 - 20% City Match for Design
 - 11.47% City Match for Construction
- Metro (MTA) Grant
- Total Estimated Construction Cost is \$13.1 Million

Estimated Project Schedule

- Environmental (Completed)
 - California Environmental Quality Act (CEQA) – Negative Declaration Adopted by City Council on December 4, 2004
 - National Environmental Quality Act (NEPA) – Categorical Exemption Approved on Feb. 25, 2003
- Design (Completed)
- Right-of-Way (Completed)
- Advertise Project – February 2013
- Award Project – June 2013
- Begin Construction – Fall 2013
- End Construction – Fall 2016

Project Benefits for Neighborhood Communities

- Substandard bridge removed from public use
- Improve traffic flow along Mission Road, Huntington Dr., and Soto St.
- Increase traffic and pedestrian safety
- Remove the barrier dividing the community
- Beautify the neighborhood by providing green space and landscaping

For more information, questions or comments please contact:

- Council Office 14 – El Sereno Office
 - Office: (323) 226-1646
- City of Los Angeles, Public Affairs Office
 - Office: (213) 978-0333
- City of Los Angeles, Bureau of Engineering
 - George Huang
 - Email: george.huang@lacity.org
 - Website: <http://eng.lacity.org/>

Questions & Comments

Thank you for your participation.