
El Sereno Transportation Projects Meeting

July 18, 2002

El Sereno Senior Center

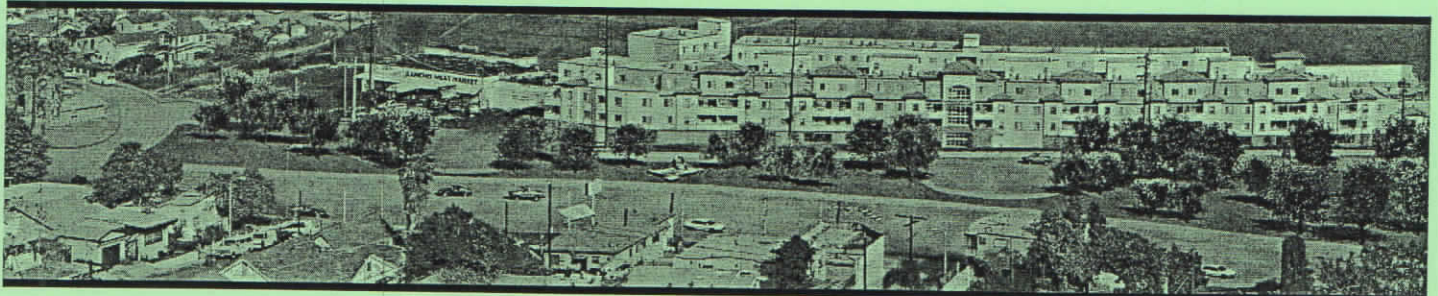
6:00 p.m. to 8:00 p.m.

AGENDA

- Welcome - Nick Pacheco,
Councilmember, 14th District
 - Valley Grade Separation Presentation
- Masih Hashemi, Bureau of Engineering
Street Improvement Projects
 - Soto Street Bridge Presentation
- Amid Habbal, Bureau of Engineering
Bridge Group
 - 710 Freeway Interim Improvements Briefing
- Carlos Rios
Department of Transportation
-
- Questions and Answers

FACT SHEET

SOTO STREET BRIDGE OVER MISSION ROAD AND HUNTINGTON DRIVE PROJECT



This is a rendering of what the location would look like after the completion of the project.

PROJECT OVERVIEW

The Soto Street Bridge Over Mission Road and Huntington Drive Project would remove the Soto Street Bridge, currently extended between Supreme Court and Turquoise Street, and reconfigure the Soto Street/Mission Road and Huntington Drive South/Huntington Drive North intersections to provide major north-south traffic movement between Mission Road and Huntington Drive North. A signalized intersection would be constructed at Mission Road and Soto Street (at Supreme Court), and the existing intersection at Huntington Drive North and Huntington Drive South would be realigned with Radium Drive. This project was initiated by the City of Los Angeles Department of Public Works Bureau of Engineering Bridge Improvement Program.

A new frontage road, terminating in dual cul-de-sacs would be constructed and the resulting median area between Mission Road and Huntington Drive North would be landscaped. The project may also include the placement of a piece of public art in this landscape area. Both full and partial property acquisitions would be required for construction of the proposed project.

The Project will benefit the Community by:

- Removing a substandard bridge from public use;
- Improving traffic flow in the area;
- Increasing pedestrian and traffic safety;
- Beautifying the neighborhood by providing green space and landscaping.

PROJECT SCHEDULE

The Planning phase of the Soto Street Project is underway. The City of Los Angeles has completed its initial study, and the remainder of the schedule includes:

- September 2004: Final Design completion
- May 2005: Start construction
- November 2006: Complete construction



Project Location Map

WE WANT TO HEAR FROM YOU

There will be opportunities to provide feedback to the project team, including Community Meetings. There will also be presentations to local Neighborhood Councils and community organizations. The project team will work in coordination with Council District 14.

QUESTIONS?

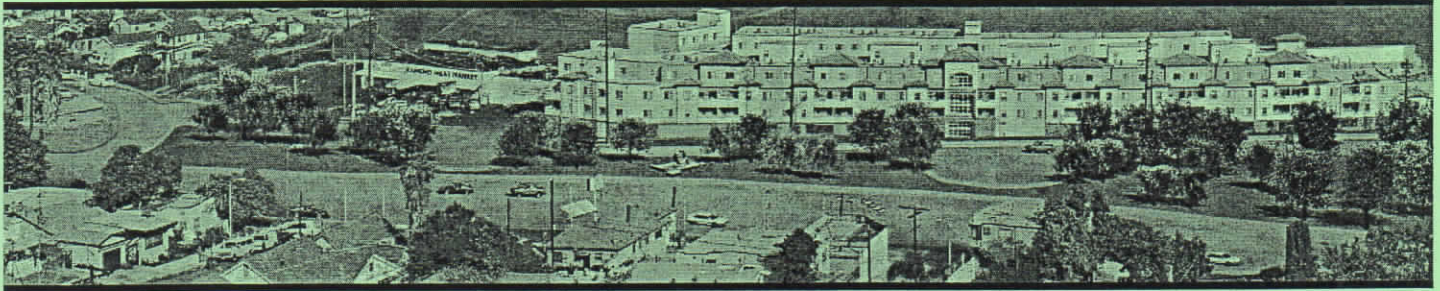
Please call Christine Robert at 213-381-5700 if you have any questions about the project. You can also fax comments to 213-381-5857.



As a covered entity under Title II of the Americans with Disabilities Act, the City of Los Angeles does not discriminate on the basis of disability and upon request will provide reasonable accommodation to ensure equal access to its programs, services and activities.

HOJA DE DATOS

PROYECTO DEL PUENTE DE LA CALLE SOTO SOBRE MISSION ROAD Y HUNTINGTON DRIVE



Ésta es una representación de lo que parecería la localización después de la terminación del proyecto

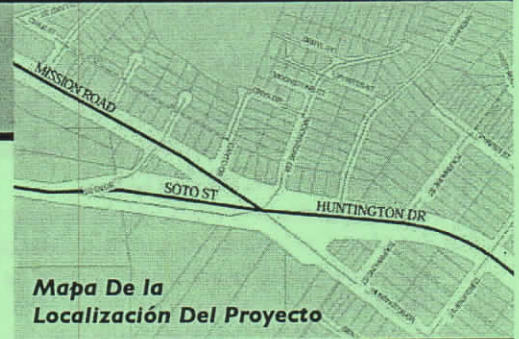
SINOPSIS DEL PROYECTO

El proyecto de eliminación y mejora del puente de la calle Soto quitaría el puente de la calle Soto, que en la actualidad se extiende entre Supreme Court y la calle Turquoise, y reconfiguraría los cruces de las calles de Soto/Mission Road y Huntington Drive Sur/Huntington Drive Norte para proveer mayor movimiento de tráfico norte a sur entre Mission Road y Huntington Drive Norte. Se construiría un cruce con semáforo en Mission Road y la calle Soto (a la altura de Supreme Court), y el cruce existente de Huntington Drive Norte y Huntington Drive Sur sería realineado con Radium Drive.

Se construiría una nueva vía frontal, que terminaría en callejones sin salida dobles, y el área que quedaría entre Mission Road y Huntington Drive Norte sería ornamentada con vegetación. Es posible que el proyecto también incluya la colocación de una obra de arte público en el área ornamentada. Se requerirían adquisiciones parciales y completas de propiedad para la construcción del proyecto propuesto. Este proyecto fue iniciado por el Programa de Ingeniería de Puentes del Buró de Obras Públicas de la Ciudad de Los Ángeles [City of Los Angeles Department of Public Works Bureau of Engineering Bridge Program].

El proyecto del puente de la calle Soto beneficiará a la comunidad de los siguientes modos:

- Eliminará un puente público de calidad inferior a la establecida;
- Mejorará el movimiento del tráfico en el área;
- Aumentará la seguridad de los peatones y del tráfico;
- Mejorará el aspecto visual del vecindario proveyendo espacios verdes.



PROGRAMA DEL PROYECTO

En la actualidad se está realizando la fase de planeamiento del proyecto de la calle Soto. La ciudad de Los Ángeles ha completado su estudio inicial y el resto del programa incluye:

- Septiembre del 2004: Se completará el diseño final
- Mayo del 2005: Se iniciará la construcción
- Noviembre del 2006: Se completará la construcción

QUEREMOS SABER SU OPINIÓN

Habrán oportunidades para proveer su opinión al equipo del proyecto, incluyendo reuniones comunitarias. También se realizarán presentaciones en los consejos vecinales locales y en las organizaciones de la comunidad. El equipo del proyecto trabajará en coordinación con el Consejo del Distrito 14.

¿PREGUNTAS?

Por favor llame a Christine Robert al 213-381-5700 si tiene alguna pregunta sobre el proyecto. También puede enviar comentarios por fax al 213-381-5857.



Según lo estipula el Título II de la Ley de Americanos con Discapacidades, la ciudad de Los Ángeles no discrimina por razones de discapacidad, y de serle solicitado, proveerá ajustes razonables para asegurar un acceso igualitario a sus programas, servicios y actividades.

Soto Street Bridge Removal and Improvements Project

City of Los Angeles

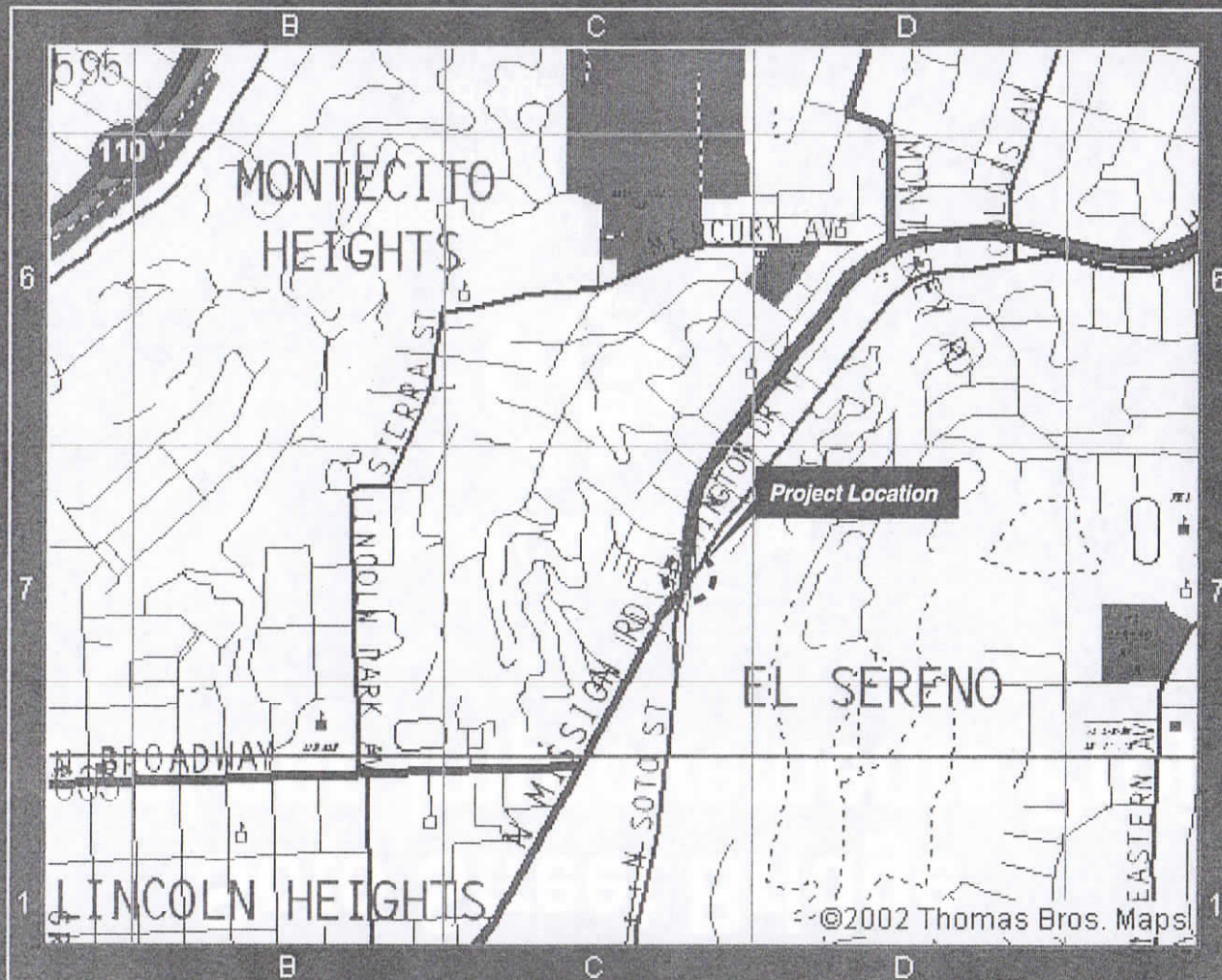


Department of Public Works
Bureau of Engineering
Bridge Program
and

Los Angeles Department of Transportation

COMMUNITY MEETING

Site Location



Bridge Program Background

- Started in 2000
- Received Federal Grant through the Highway Bridge Rehab. and Replacement (HBRR) Program (80% Federal Funds)
- City 20% Matching Funds - Proposition G, Seismic Bond
- MTA Funds
- Total Program Budget is \$280 Millions

Soto Street Bridge Background and History

- Soto Street Bridge constructed in 1936
- Joint Venture between City of Los Angeles and Pacific Railway Company to enhance public safety
- Grade separation for the Pasadena Short Line of the Pacific Railway System
- Railroad tracks removed in early 1960's and converted for automobile use
- Configuration - two northbound lanes and a single southbound lane
- Limited roadway width between existing bridge piers

Site Characteristics

- Located in El Sereno and Montecito Heights area
- Within Northeast Los Angeles Community Plan
- Designates Huntington Drive, Mission Road and Soto Street in the project area as routes for Class II bike lanes
- Surrounding topography is moderately sloping
- Commercial land uses and single-family residences
- Undeveloped hillside largely comprised of open space

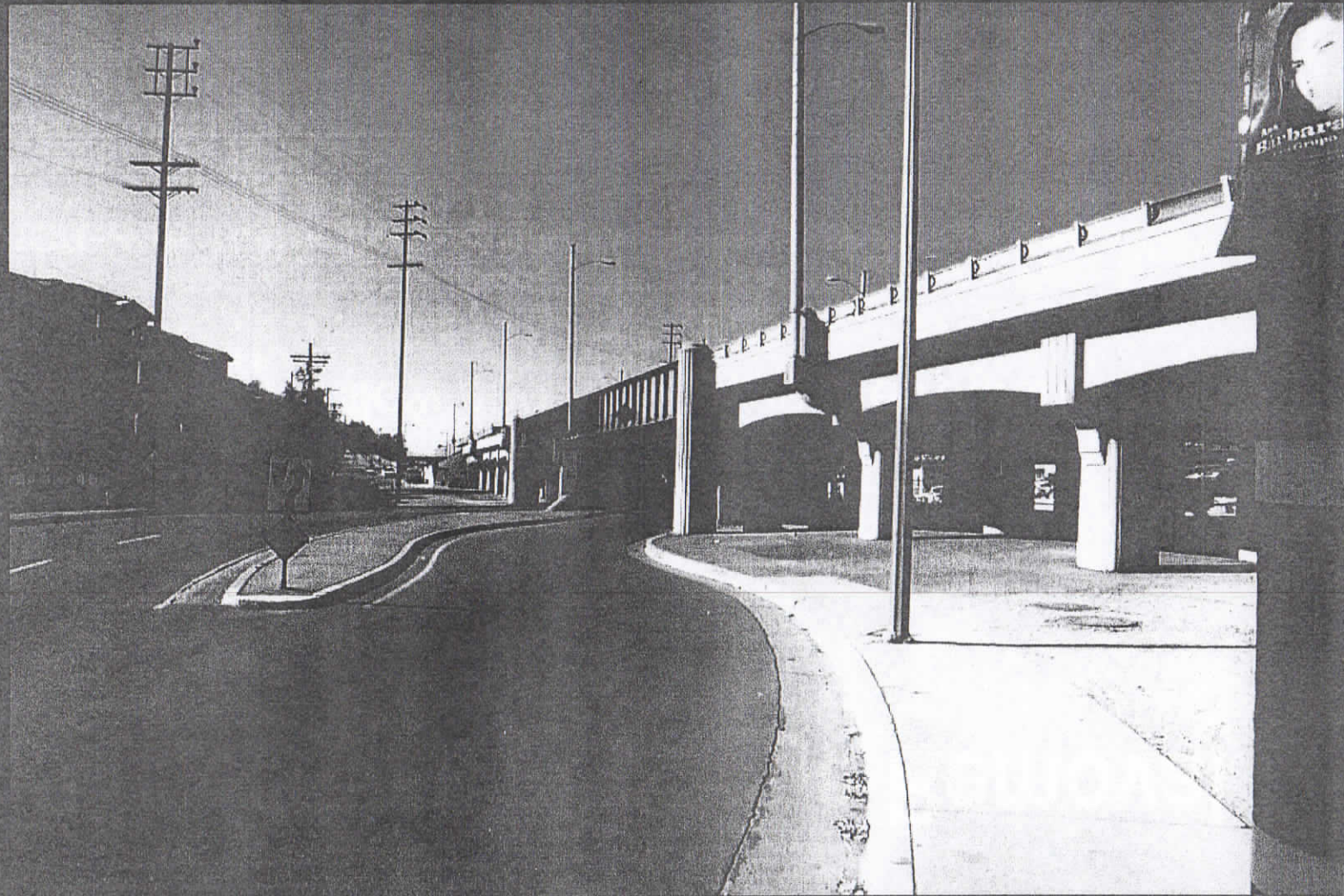
Project Description

- Remove Soto Street Bridge
- Provide 2 New Signalized Intersections
- Provide Landscaping and Tree Planting
- Provide Art Work

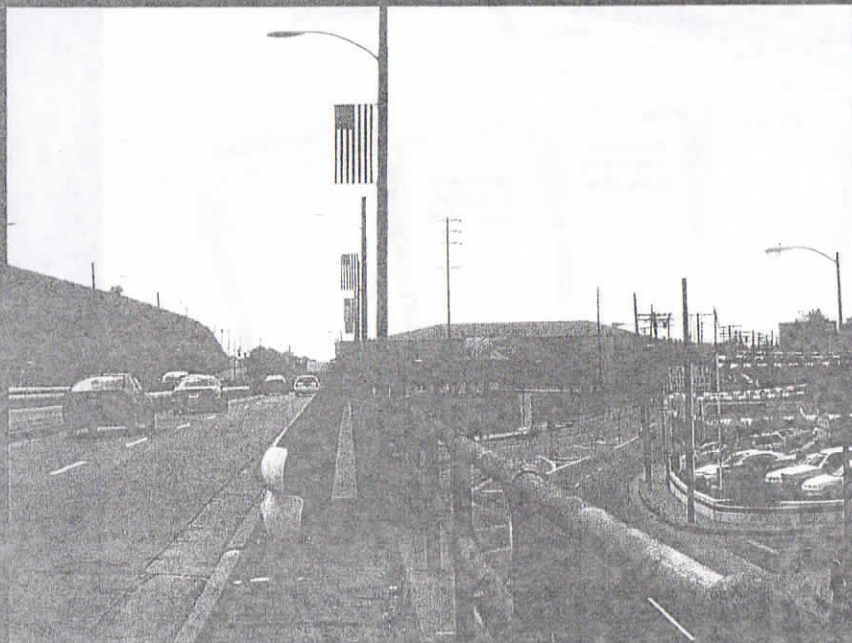
Objectives of Bridge Removal

- Remove Substandard Bridge
- Improve traffic flow and mobility in the region
- Increase traffic and pedestrian safety
- Remove community barrier (the Bridge)
- Beautify the neighborhood by providing green space

Soto Street Bridge



Soto Street Bridge

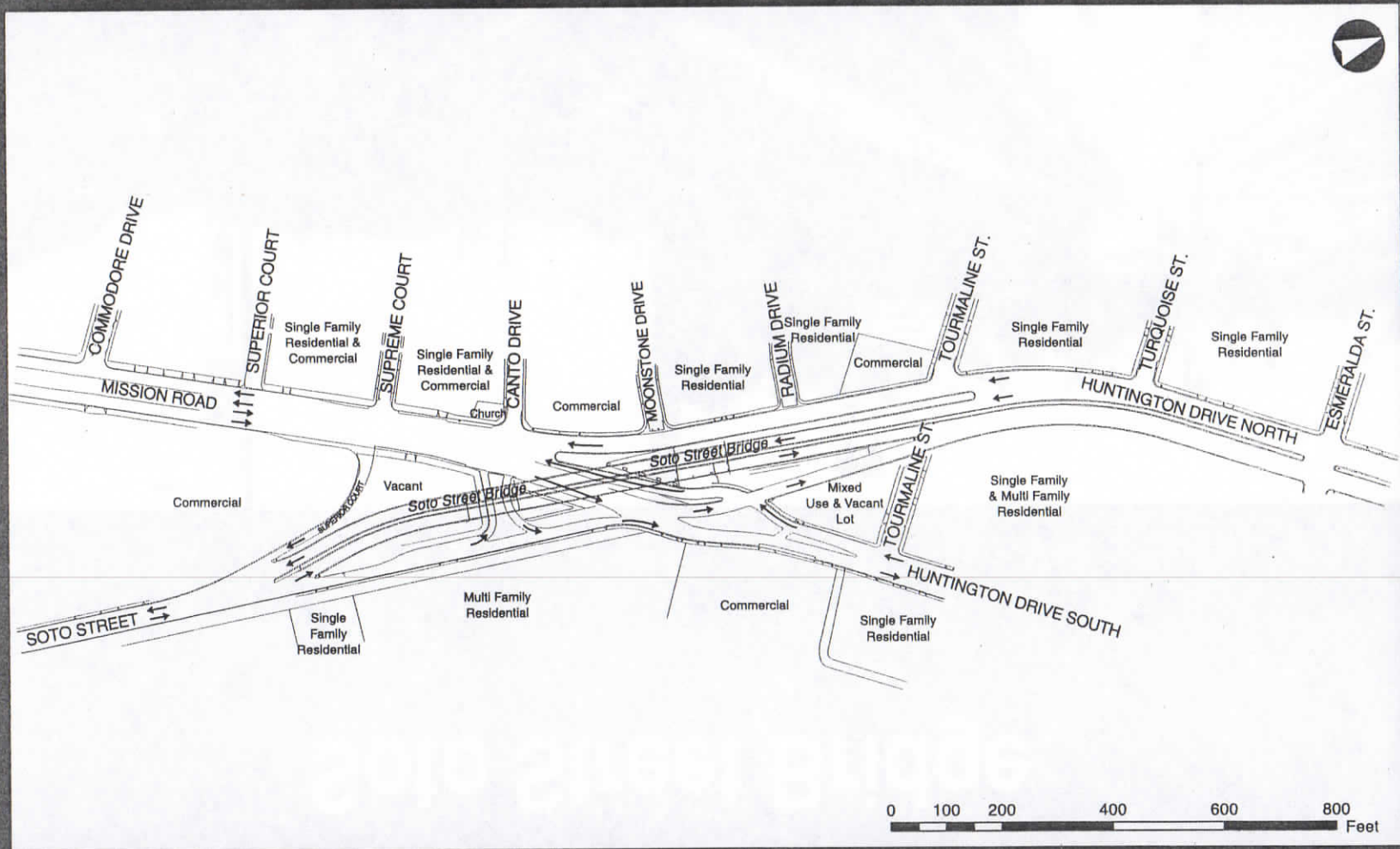


View from Soto Street Bridge Looking South

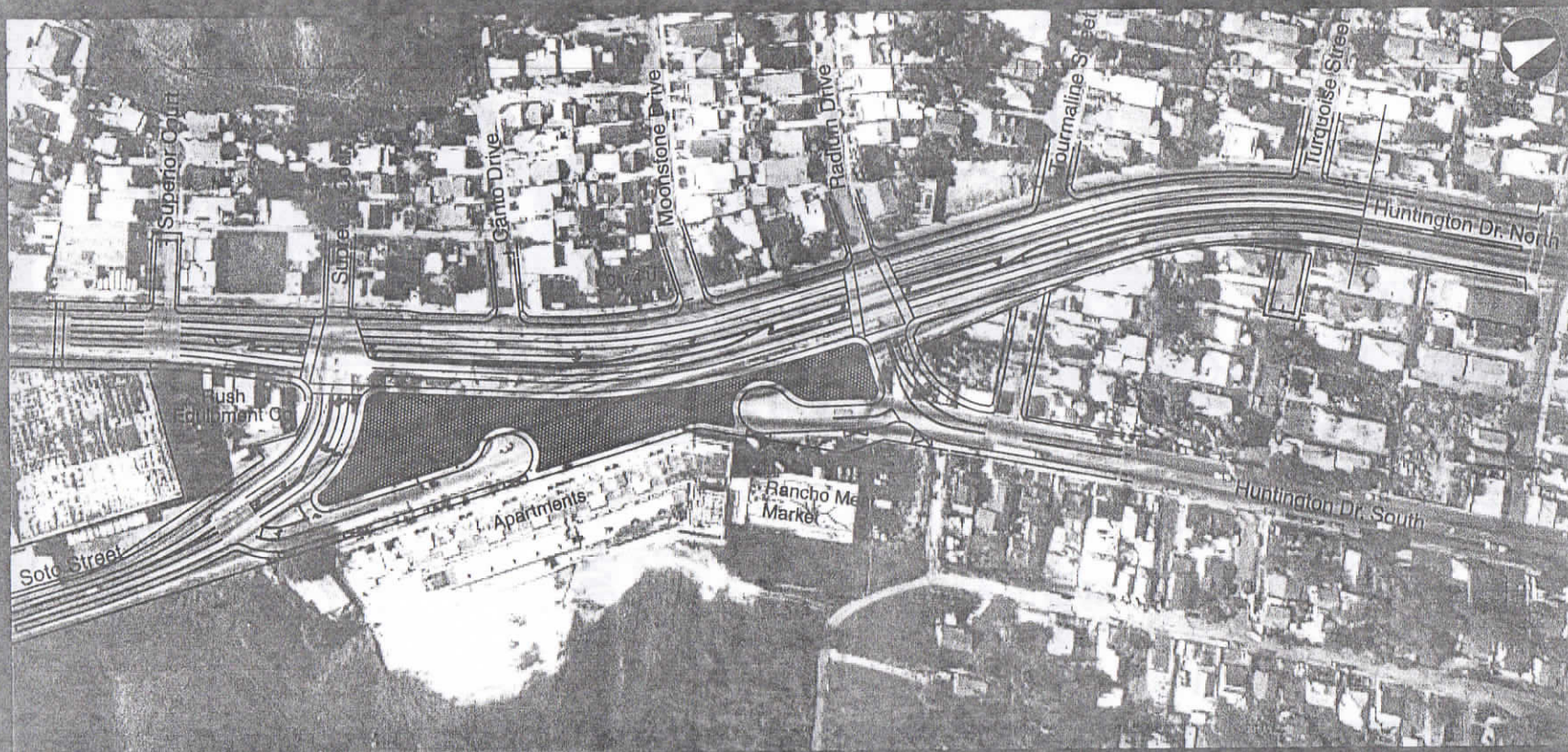


View from Soto Street Bridge Looking North

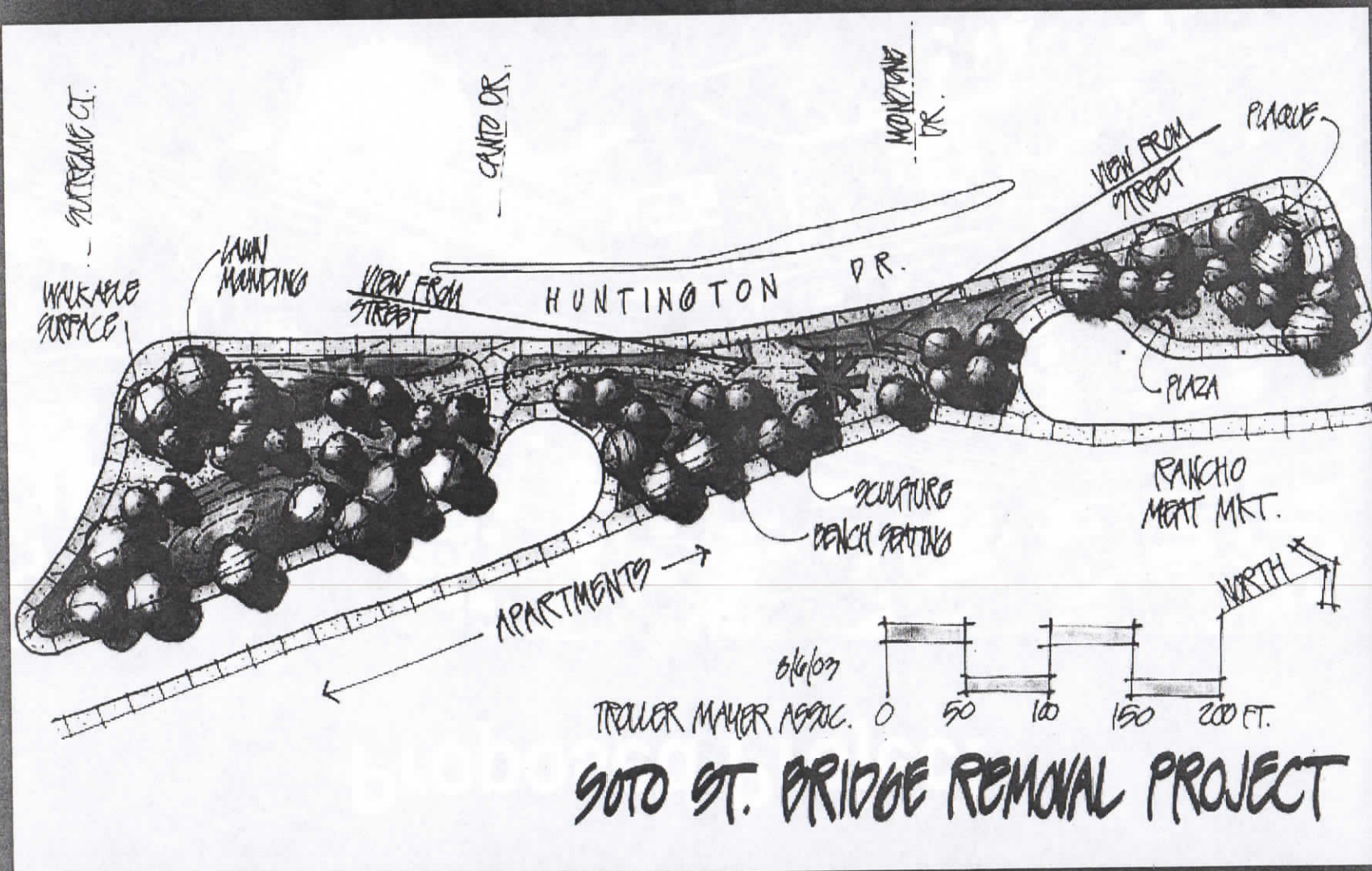
Existing Conditions



Proposed Project

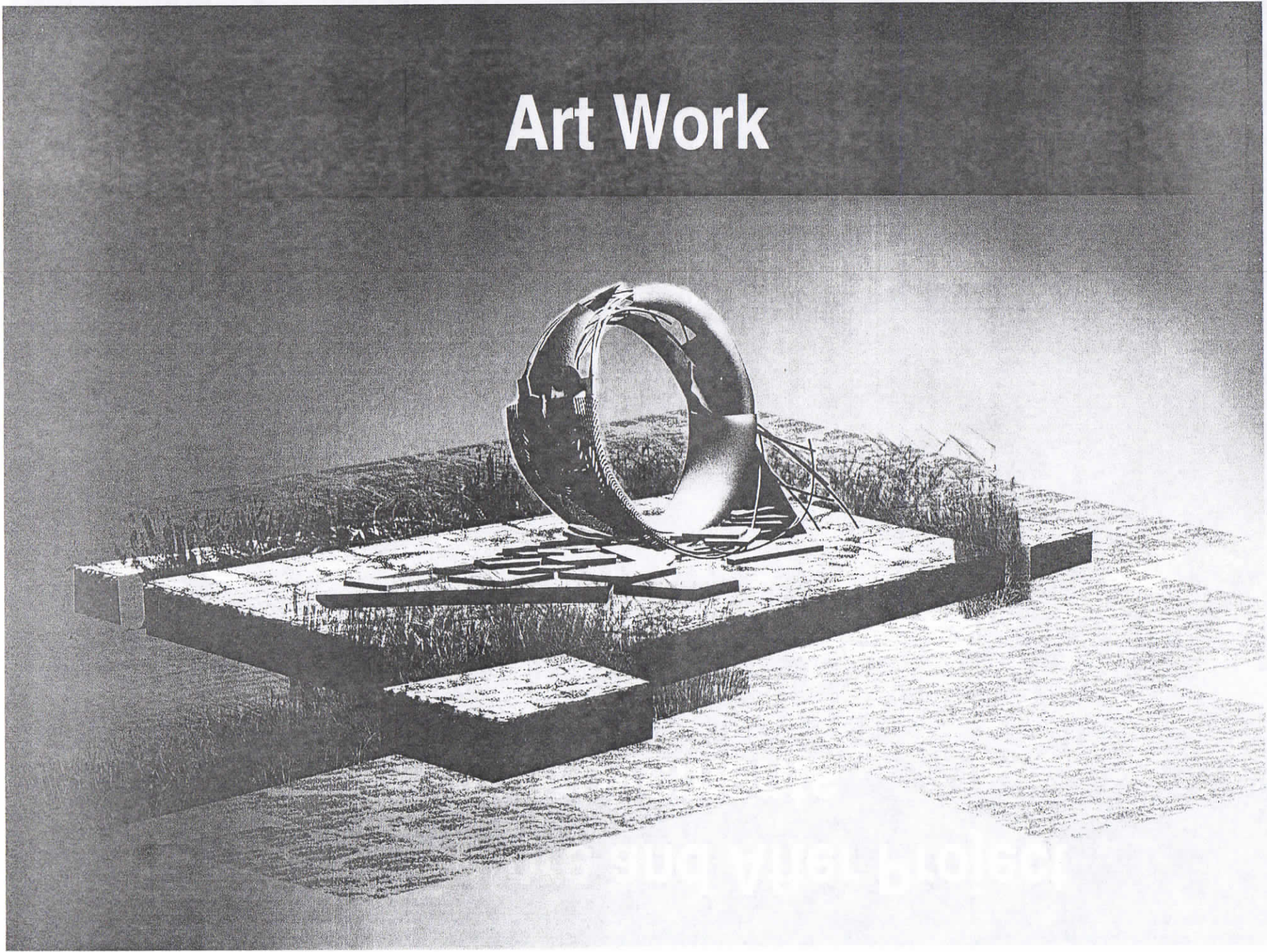


Landscape



SOTO ST. BRIDGE REMOVAL PROJECT

Art Work



STEFANIE BLOFF

Soto – Before and After Project Improvements



Existing Conditions



Future Conditions with Project Improvements

Project Benefits for El Sereno and Montecito Heights Communities

- Substandard bridge removed from public use
- Improve traffic flow
- Increase traffic and pedestrian safety
- Remove the barrier dividing the community
- Beautify the neighborhood by providing green space
- Art Work

Project Schedule

- September 2004 Final Design Completed
- May 2005 Start Construction
- November 2006 Complete Construction

Construction Stages

- 3 Construction Stages
- Traffic will be maintained at all times
- Utility Services will be maintained at all times

**For more information, questions or
comments please contact**

- **Chris Robert, The Robert Group**
 - 213.381.5700 / tel.
 - 213.381.5857 / fax

Questions/Answers & Comments

- Thank You for your participation and comments

**City of Los Angeles Bureau of Engineering
Bridge Program**

**Soto Street Bridge Over Mission Road and Huntington Drive
Project**

**Community Meeting Agenda
Lincoln Park Recreation Center Auditorium
3501 Valley Blvd., Los Angeles, CA 90031**

Monday, April 26, 2004
5:00 p.m. to 7:00 p.m.

1.0 Team Introduction	Chris Robert	2 minutes
2.0 Power Point Presentation	Chris Robert	10 minutes
3.0 Construction Staging & Traffic Detour	Hon Yow	5 minutes
4.0 General Q&A	Chris Robert	20 minutes
5.0 Open House*	Project Team	until 7:00 p.m.

* Rick Mayer and Stephen Glassman will have boards to answer questions related to landscaping and art piece.

City of Los Angeles, Department of Public Works, Bureau of Engineering

SOTO STREET BRIDGE OVER MISSION ROAD AND
HUNTINGTON DRIVE PROJECT

Community Meeting Comment Form
Monday, April 26, 2004

Thanks for attending today's Community Meeting! Please take the time to fill out this comment sheet so we can include your feedback as we move ahead with this project.

Name: Lydia Aquino

Affiliation: Hillside Village Property Owners Association, Inc.

Address, City, State, Zip Code: 4479 Gateside Dr. LA 90037

Phone: 323-222-1902

Email: hillside.sweethe@netzero.net

Comments: As a frequent commuter through this area, I see the proposed plan as an improvement from the current condition. Not only is the driving condition bad, it's very confusing. There are too many stops and too many small turnoffs. I feel that the proposed changes will make it less confusing and will actually benefit the area.

My concern is about the tenants of the apartment complex. Since the building's opening the area across the street has become an illegal dumping ground. I hope the residents will appreciate the new landscape and work to keep it clean.

You may return this comment form to the sign-in table at the end of today's meeting, fax it to us at (213) 381-5857 or drop it in the mail c/o The Robert Group, 3780 Wilshire Boulevard, Suite 1010, Los Angeles, CA 90010.

As a covered entity under Title II of the Americans with Disabilities Act, the City of Los Angeles does not discriminate on the basis of disability and upon request will provide reasonable accommodation to ensure equal access to its programs, services and activities.

City of Los Angeles, Department of Public Works, Bureau of Engineering

SOTO STREET BRIDGE OVER MISSION ROAD AND
HUNTINGTON DRIVE PROJECT

Community Meeting Comment Form

Monday, April 26, 2004

Thanks for attending today's Community Meeting! Please take the time to fill out this comment sheet so we can include your feedback as we move ahead with this project.

Name: Richard Acosta

Affiliation: LA 32 NC NORTHEAST EISELEND ASSOCIATION

Address, City, State, Zip Code: 3955 N. BARLETT AVE
LOS ANGELES, CA 90032-1713

Phone: 323-222-3706

Email: RICK.ACOSTA.47@MSN.COM

Comments: I PERSONALLY LOOK FORWARD AS WELL AS OTHER
MEMBERS OF OUR COMMUNITY THAT THIS PROJECT MOVE
FORWARD. THIS ALONG WITH THE USC BIO-MEDICAL CAMPUS
THAT WILL LANDSCAPE MISSION RD, THE SOTO/MISSION BRIDGE
AND HUNTINGTON DRIVE WILL GREATLY ENHANCE OUR
COMMUNITY AND WILL MAKE A BEAUTIFUL TRANSFER FROM
THE DOWNTOWN AREA TO THE SAN GABRIEL VALLEY.

WE WOULD LIKE TO SEE THE AREA BETWEEN THE MISSION
SOTO PROJECT BE LANDSCAPE TO MONTEREY.

CAN OFFER TO DO COMMUNITY MEETING & OUTREACH
IN FAVOR OF PROJECT IN THE NORTH AREA OF EISELEND

You may return this comment form to the sign-in table at the end of today's meeting, fax it to us at (213) 381-5857 or drop it in the mail c/o The Robert Group, 3780 Wilshire Boulevard, Suite 1010, Los Angeles, CA 90010.

As a covered entity under Title II of the Americans with Disabilities Act, the City of Los Angeles does not discriminate on the basis of disability and upon request will provide reasonable accommodation to ensure equal access to its programs, services and activities.

City of Los Angeles, Department of Public Works, Bureau of Engineering

SOTO STREET BRIDGE OVER MISSION ROAD AND
HUNTINGTON DRIVE PROJECT

Community Meeting Comment Form
Monday, April 26, 2004

Thanks for attending today's Community Meeting! Please take the time to fill out this comment sheet so we can include your feedback as we move ahead with this project.

Name: GERMANY CRUZ

Affiliation: Valley Vistas Apartments Manager

Address, City, State, Zip Code: 9580 N Soto St #015 L.A CA 90032

Phone: Office 303 276-0977 House 323 276-0977

Email: Valleyvistas@sbcofhal.net

Comments: I am the Manager of the large complex in front the Soto Street Bridge. Since year ago ^{I become manager} at least there is 3-5 accidents every month because of the entrance of the streets also the cars drive too fast Also right now there is no traffic signals to cross from Soto Street to Mission St or Huntington Dr. So I support to continue with this project to remove the Bridge. Also I can help you out with this project to support you.

Germany Cruz A

You may return this comment form to the sign-in table at the end of today's meeting, fax it to us at (213) 381-5857 or drop it in the mail c/o The Robert Group, 3780 Wilshire Boulevard, Suite 1010, Los Angeles, CA 90010.

As a covered entity under Title II of the Americans with Disabilities Act, the City of Los Angeles does not discriminate on the basis of disability and upon request will provide reasonable accommodations to ensure equal access to its programs, services and activities.

SOTO STREET BRIDGE OVER MISSION ROAD AND
HUNTINGTON DRIVE PROJECT

Community Meeting Comment Form

Monday, April 26, 2004

Thanks for attending today's Community Meeting! Please take the time to fill out this comment sheet so we can include your feedback as we move ahead with this project.

Name: GEORGE CABRERA, JR.

Affiliation: HUPOA-HILLSIDE VILLAGE PROPERTY OWNERS ASS. INC.

Address, City, State, Zip Code: 1912 BOCA AVE., HILLSIDE VILLAGE, CA 90032

Phone: (323) 223-2741

Email: ggcabrera@pacbell.net

Comments: Directed to Christine Robert

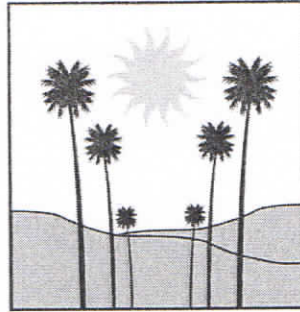
The Traffic which will be rerouted from the Soto street bridge to Valley Blvd. I am not satisfy with the gentlemen's answer, because the public sometimes ignore the reroute signs and will drive thru our community of Hillside Village. This will seriously impact our community no matter what you say. You have to emphasize on your signs about traveling thru our community of Hillside Village, to not use our streets as a shortcut thru Hillside Village.

You may return this comment form to the sign-in table at the end of today's meeting, fax it to us at (213) 381-5857 or drop it in the mail c/o The Robert Group, 3780 Wilshire Boulevard, Suite 1010, Los Angeles, CA 90010.

As a covered entity under Title II of the Americans with Disabilities Act, the City of Los Angeles does not discriminate on the basis of disability and upon request will provide reasonable accommodation to ensure equal access to its programs, services and activities.

EXECUTIVE BOARD

- VACANT
PRESIDENT
- ANTHONY MANZANO
VICE-PRESIDENT
- PAM MARQUEZ
TREASURER
- SCOTT JOHNSON
RECORDING SECRETARY
- VACANT
CORRESPONDING SECRETARY



**LAND USE & DEVELOPMENT
COMMITTEE MEMBERS**

- VAL MARQUEZ
CO-CHAIR
- JOHN CARBAJAL
CO-CHAIR
- JOE MANZANO
STAKEHOLDER

**LA-32 NEIGHBORHOOD COUNCIL
LAND USE & DEVELOPMENT COMMITTEE
MEETING AGENDA**

APRIL 20, 2011, 6:00PM
 BARRIO ACTION YOUTH AND FAMILY CENTER
 4927 HUNTINGTON DR, 2ND FLOOR, LOS ANGELES, CA 90032

1. Call to Order – Roll Call
2. Review and Approval of Minutes of LUDC Presented or Amended, 3-17-11 & 3-25-11 Meetings
3. New Business
 - a. 7-Eleven Convenience Store & Fuel Facility; Request for a Conditional Use permit for the sale of Beer & Wine for off-site consumption(CUB) & the 24 hour operation(CUZ); Corner of Valley Blvd. & Highbury Avenue, Celso Martinez, 30 Min.
 - b. Soto Street Widening & Mission Bridge, Multnomah Street to N. Mission Road- Presentation, Chen-Min Huang, 30 Min.
 - c. South Pasadena Website reference to 710 Fwy. Connector Road- Val Marquez, 10 Min.
4. Old Business
 - a. New Emery Park Recreation Center, Corner of Alhambra Ave & Concord Ave- Val Marquez, 20 Min.
5. Public Comment (2 minutes per speaker and for a maximum of 20 minutes on Non-Prescribed Agenda Items)
 - a. General Public Announcements
6. Administrative
 - a. Future Meeting
 - b. Future Agenda
7. Adjournment

Comments from the public on Agenda items will be heard only when the respective item is being considered. Comments from the public on other matters not appearing on the Agenda that is within the committee's subject matter jurisdiction will be heard during the Public Comment period. Public comment is limited to 2 minutes per speaker and for a maximum of 20 minutes, unless waived by the presiding officer of the committee. In compliance with Government Code section 54957.5, non-exempt writings that are distributed to a majority or all of the board members in advance of a meeting may be viewed at Barrio Action, 4987 Huntington Drive N., 2nd floor, L.A, CA 90032 during the monthly Committee Meeting.

EXECUTIVE BOARD

ANTHONY MANZANO
PRESIDENT

VAL MARQUEZ
VICE-PRESIDENT

PAM MARQUEZ
TREASURER

SCOTT JOHNSON
RECORDING SECRETARY

LINDA MCGUIRE
CORRESPONDING SECRETARY

CITY OF LOS ANGELES CALIFORNIA



**LAND USE & DEVELOPMENT
COMMITTEE MEMBERS**

JOHN CARBAJAL
CHAIR

VAL MARQUEZ
MEMBER

JOE MANZANO
STAKEHOLDER

**LAND USE & DEVELOPMENT COMMITTEE
MEETING AGENDA**

WEDNESDAY JULY 27, 2011, 6:00PM

CD14 CONSTITUENT CENTER

4927 HUNTINGTON DRIVE, 1ST FLOOR CONFERENCE ROOM, LOS ANGELES, CA. 90032

1. Call to Order – Roll Call
2. Review and Approval of Minutes of LUDC Presented or Amended, 5-24 & 5-31-11 Meetings
3. Old Business and possible Action Item
 - a. Soto Street Widening & Mission Bridge, Multnomah Street to N. Mission Road; George Huang, P.E. - 30 Min.
 - b. El Sereno Alternative for SR-710 Extension – Discussion; Val Marquez - 20 Min.
4. New Business
 - a. New Land Use Procedures for all ZA Hearings; Discussion- John Carbajal - 20 Min.
 - b. Budget allocation for Land Use Training
5. Public Comment (2 minutes per speaker and for a maximum of 20 minutes on Non-Prescribed Agenda Items)
 - a. General Public Announcements
6. Administrative
 - a. Future Meeting
 - b. Future Agenda
7. Adjournment

Comments from the public on Agenda items will be heard only when the respective item is being considered. Comments from the public on other matters not appearing on the Agenda that is within the committee's subject matter jurisdiction will be heard during the Public Comment period. Public comment is limited to 2 minutes per speaker and for a maximum of 20 minutes, unless waived by the presiding officer of the committee. In compliance with Government Code section 54957.5, non-exempt writings that are distributed to a majority or all of the board members in advance of a meeting may be viewed at Barrio Action, 4927 Huntington Drive N., 2nd floor, LA, CA 90032 during the monthly Committee Meeting.



Co-Sponsored by Council District 14

Invite You to a Community Meeting To Discuss The Following Projects

Mission/Soto/Huntington Bridge Project

Bridge Demolition, New Pocket Park with Walking Trails, Additional Pedestrian Crosswalks

Soto Street Widening Project

Soto Widening of East Side Shoulder, New Retaining Wall(s), Bicycle Lanes

Sidewalk & Curb Ordinance

Current update & status of Ordinance

CD-14 Redistricting

Update on City draft of new district boundaries in CD-14

Date & Time

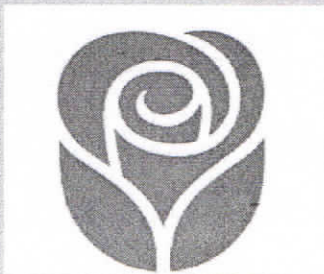
Monday February 6th, 2012, 6PM

Location:

Rose Hills Recreation Center

4530 Mercury Avenue, Rose Hills, CA. 90032

Contact Info : Joe Manzano, (213) 926-3333



LA-32 Neighborhood Council Invites the Community to Attend a TOWN HALL MEETING

To hear presentations and discuss the following projects in the LA-32 Neighborhood Council Communities:

Soto Street Widening Project - *Presentation*

Chen-Min "George" Huang

Bureau of Engineering - Bridge Program

Hillside partial removal, retaining wall and related issues

Soto/Mission Bridge Project - *Presentation*

Chen-Min "George" Huang

Bureau of Engineering - Bridge Program

Bridge Demolition, New pedestrian Crosswalks and related issues

Soto Street @ Valley Blvd. Bridge Widening Project - *Presentation*

Chen-Min "George" Huang

Bureau of Engineering - Bridge Program

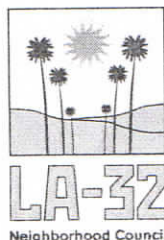
Bridge Widening & Retrofitting

Date/Time:

Thursday, February 16, 2012, 6:00 PM –9:00 PM

Location:

El Sereno Senior Citizen Center
4818 Klamath Place, Los Angeles, CA 90032



City of Los Angeles

CITY OF LOS ANGELES
COMMUNITY BRIEFING AGENDA

**SOTO STREET BRIDGE OVER MISSION ROAD AND HUNTINGTON DRIVE
PROJECT**

MEETING LOCATION: Huntington Drive Elementary School
4435 Huntington Drive North Los Angeles, CA 90032

MEETING DATE & TIME: Monday, February 4, 2013 from 6:00 PM - 7:00 PM

1. **SIGN-IN:** (All)
2. **INTRODUCTION:** (Council District 14 and Bureau of Engineering)
3. **PRESENTATION:** (Noelle Afualo and Evelyn French, Simon Wong Engineering)
4. **QUESTIONS AND ANSWERS:** (All)