

NEW ALUMINUM HAND PAINTED ADULT AND KEEPSAKE URNS



H23 GOLF COURSE



H24 UNDERWATER



H25 VAN GOGH



H26 HUMMINGBIRD



H27 BUTTERFLY



H28 BARN



M21 MUSIC



H5 MOUNTAIN



DESERT



KH26 HUMMINGBIRD



CARDINAL



DOPHIN



WINDMILL



GOLFER



H1 RAINBOW



E1 MOON



M19 HUMMINGBIRD



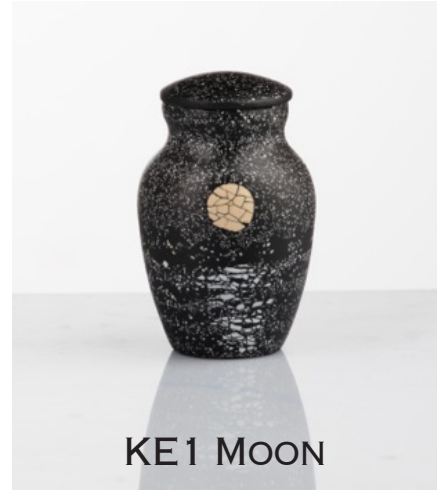
M20 BLUE CROSS



H22 TREE IN FIELD



H21 BEACH PATH



KE1 MOON



KH1 RAINBOW



KH13 LIGHTHOUSE



KH14 SUNSET



KH15 BENCH AND LAKE



KH16 FISHERMAN



KM20 BLUE CROSS





M11 PEWTER GREY



M12 PURPLE



H13 LIGHTHOUSE



H14 SUNSET



H15 LAKESIDE



H16 FISHERMAN



H17 COUNTRYSIDE



H19 GOLFER



H20 STARS



M13 GREEN BLUE



M14 RED



M15 PURPLE



M17 BLUE



M18 GREEN



M16 PEWTER GREY



M9 BLUE



KM9 BLUE



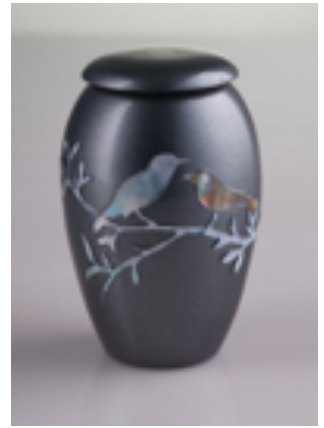
KM13 GREEN BLUE



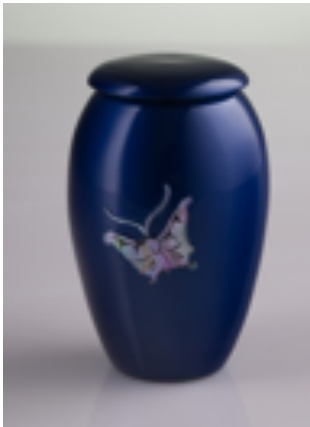
KM14 RED



KM15 PURPLE



KM16 PEWTER GREY



KM17 BLUE



KM18 GREEN



KH9 KEEPSAKE BLUE



KH10 KEEPSAKE
ORANGE



H2 PAINTED ROSE,
BLUE



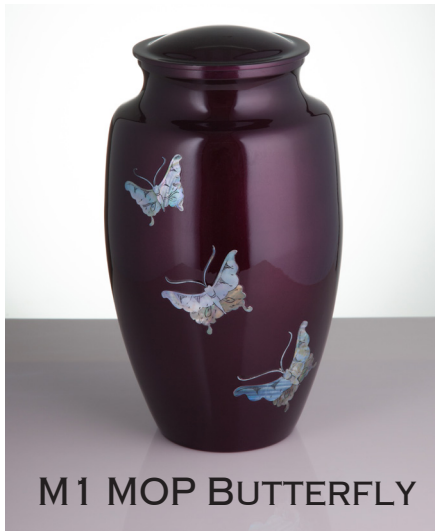
H3 PAINTED ROSE,
PURPLE



H4 ABSTRACT



M4 MOTHER-OF-PEARL, INTEGRAL



M1 MOP BUTTERFLY



M3 MOP DOVE



M6 MOP TREE LEAVES



M7 FALLING LEAVES



M2 MOP ROSE, PURPLE



M5 MOP ROSE, BLUE



FG002
(NOT AVAILABLE IN KEEPSAKE)



**KH2
PAINTED
ROSE, BLUE**



**KH3
PAINTED
ROSE, PURPLE**



**KH4
ABSTRACT**



**KM1 MOP,
BUTTERFLY**



**KM2 MOP,
ROSE,
PURPLE**



**KM3 MOP,
DOVE**



**KM4 MOP,
INTEGRAL**



**KM5 MOP,
ROSE BLUE**



**KM6 MOP,
TREE**



**KM7 MOP,
FALLING
LEAVES**



**M19B MOP,
HUMMINGBIRD -
PURPLE**



ROUTE 66



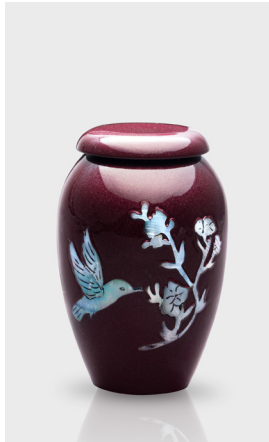
**KH11
FALLING
LEAVES
KEEPSAKE**



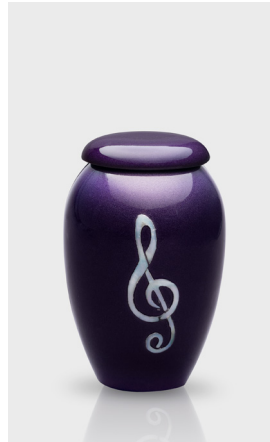
**KH23
GOLF COURSE
KEEPSAKE**



**KH27
HAND PAINTED
BUTTERFLY
KEEPSAKE**



**KM19B MOP,
HUMMINGBIRD
KEEPSAKE -
PURPLE**



**KM21 MOP,
MUSIC
KEEPSAKE**



**ROUTE 66
KEEPSAKE**

AMBASSADOR ASSOCIATES

Carol Poole

Local (828) 428-0874

Orders: (828) 428-0874 • Mobile: (828) 320-0514

4211 Davis Road, Maiden, NC 28650

www.aadfs.us • cpaafs@poolec.com