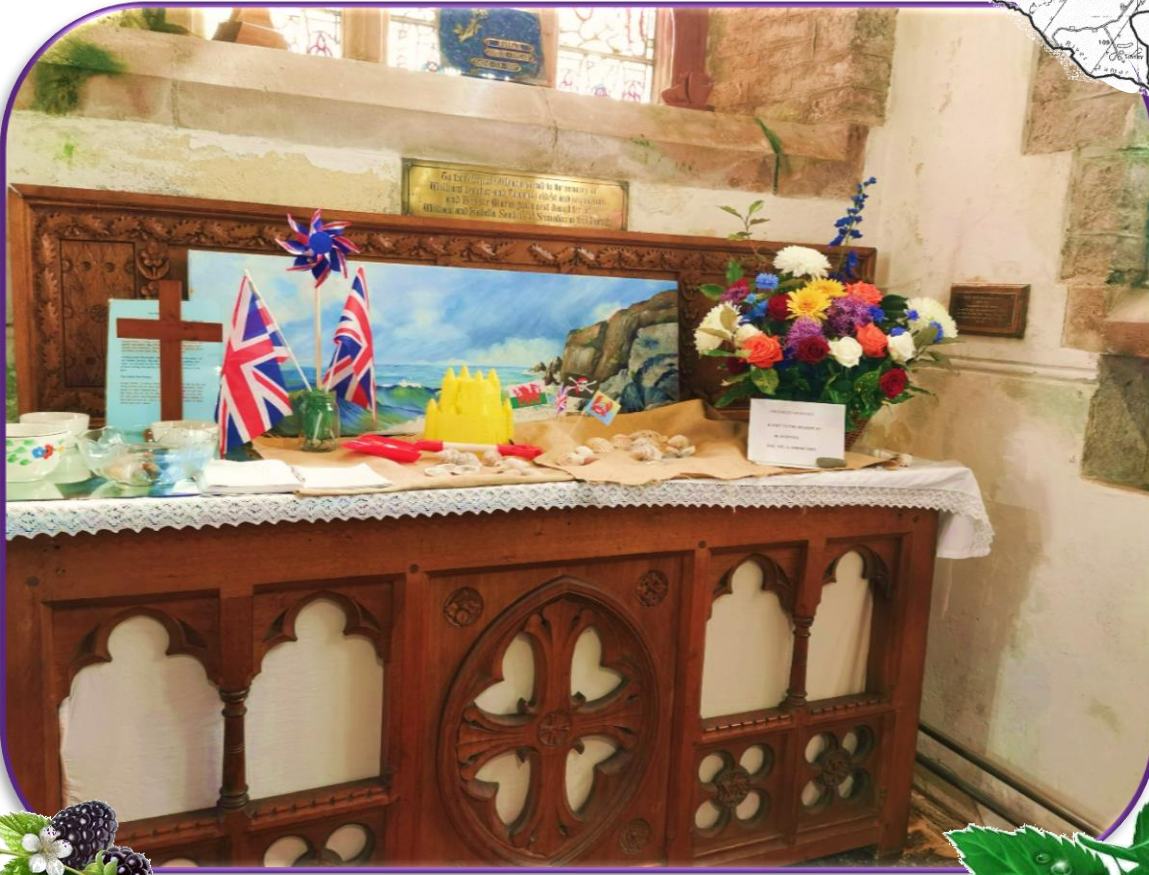


PYWORTHY POST



Left: One of the beautiful displays in our Church, depicting "Childhood Memories". More photos can be found inside.



What's in your paper this month?

Life at the Apprentice School, Mike Godfrey tells all!

Young reporter reviews local theatre performance.

Events & dates for your diaries, and much, much more turn the page and come inside.

Read online at:

<https://pyworthy-parish.co.uk/>

and view the paper in full colour.



August 2025
Issue number 342

**QUALIFIED ANIMAL BEHAVIOURIST
AND ANIMAL SCIENTIST BSC (HONS)**



Spirit Paws
OVER 20 YEARS EXPERIENCE

07851 291 081



www.spiritpaws.org



Snapchat



Insagram



TikTok



Facebook



Youtube

Welcome to the AUGUST Edition



By Marion Ravn

As we roll into August, the summer holidays for many, let's hope the weather will be on our side.

We have an article from a young reporter this month. At just 13, Alice Chandlers has written a review of Romeo and Juliet, performed in the Badock Gardens in Holsworthy. Well done to her. It's very encouraging to other young people, who may like to write for our community paper.

Our Church held its Patronal Festival recently, which was well attended. You can see photos of some of their lovely displays on pages 29 & 30. Also, it's not too late to give the Church a donation. A gift aid donation slip can be found on page 15.

The Village Hall will still be running Social Evenings during August. "Play Your Cards Right" will be back on the 8th, why not pop long.

Are you preparing for the Village Show next month? This is always a popular event on the village calendar. The classes this year are listed in the programme, which is now available at the cost of only 50p. See page 28 for more details.

Pyworthy Park will be celebrating its 100 year anniversary in September. The Park committee have organised a Sports Day, BBQ & other events on the 13th September for the whole village to enjoy. See page 43.

Have a great month, make the most of the good weather.

**Keep the news and articles coming
in. Email: pyworthy@post.com**

Page Index:

2. Sponsor's page
3. Editors welcome & page Index
4. August Birthdays
5. Church service information
- 6/8. Village Hall news, events & clubs
9. Sponsor's page
- 10/12. My Electrical Industry Recollections by Mike Godfrey
12. The Derril flood of 1958
13. Sponsor's ad & Line Dancing Club
14. Evelyn's Walks group report
15. Church Gift Aid slip & July's Poser answers
- 16/17. Pyworthy People & Rural Art Classes
18. Men's Skittles Team & sponsor's page
- 19/21. Gardening with Mike Godfrey
22. Local theatre review
23. Sponsor's page
24. Holsworthy Library – what's on in August
- 25/26. St. Swithun's Church News
26. Meet the Police
27. Sponsor's page
- 28/29. Church Patronal Festival
29. How to buy a programme for Village Show
30. Derril Solar Park update
31. North Devon Hospice event – Floating Bye
32. Easyfundraising for the Village Hall & Holsworthy Food Bank
33. August Poser Quiz & **T.D.C. BIN collection dates**
- 34/35. Changes for older drivers which start in August
36. Sponsor's pages & useful contact numbers
37. Hedgehog Thank You message & sponsor's ad
38. Slimming World & sunset & sunrises times
39. Computer News
- 40/41. Holsworthy Walk & Talk group report & programme of walks
42. Sponsor's page
43. The John Sanders Park Trust
44. Village Hall poster – October event
45. Local Business contacts list
46. Sponsor's page
47. Save your stamps for Hedgehogs & Sponsor's page
48. Sponsor's page
49. Pyworthy Parish Council contact details & Clawton Primary School holiday provision
- 50/53. August Nature Notes series
54. Dates for your Diary
- 55/56. Sponsors page



WHO'S CELEBRATING THIS MONTH?



BIRTHDAYS

AUGUST

- 2nd Wendy Brennan
- 4th Myrtle Harris
- 5th Bethany Lock
- 6th Jill Lapham
- 8th Isaac O'Farrell
- 9th Jean Thripp
- 14th Anellie Francis
- 16th Catherine Skinner, Natasha Peddle,
Evie Chandler-Galt
- 17th Tegan Holdaway
- 21st Chris Martin, Dean Piercey
- 23rd Ellie Burnard
- 24th Paul Quick, Lacey Francis
- 25th Natalia Abell
- 27th Tim Kirkwood
- 28th Jack Rose, Emily Stevenson
- 30th Finley Weekes



Community Birthday list

New Residents of Pyworthy Parish, please feel welcome to add your birthdays to our community list.

SPECIAL BIRTHDAYS AND FAMILY OCCASIONS

Our Condolences

Jean Horwood passed away during July.
Sincere condolences go to her family and friends.
She will be sadly missed.

Her funeral will be held
on the 4th August at 2pm
in Pyworthy Church.




United Benefice of Holsworthy

Rector: Revd Alison Hardy, Churchwarden: Alison Davies & Liffy Lowes



Benefice Services for AUGUST

<http://www.holsworthybenefice.org.uk/services/benefice-calendar/>

Worship and Prayer in the Holsworthy Benefice – AUGUST 2025				
Date	Bridgerule	Holsworthy	Pyworthy	Hollacombe
Sunday 3 rd August	11.00am Sung Eucharist	9.30am Sung Eucharist	9.30am Family Service	9.30am Mass
Sunday 10 th August	11.00am Morning Prayer	11.00am Sung Eucharist	9.30am Sung Eucharist	3.00pm Evensong
Sunday 17 th August	-	11.00am Sung Eucharist	9.30am Sung Eucharist	9.30am Mass
Sunday 24 th August	11.00am Sung Eucharist	11.00am 	9.30am Morning Prayer	-
	9.30pm – All Age Service at Pancrasweek			
Sunday 31 st August	11.00am at Bridgerule Church – Joint All Age Service			

Church Bookings

To book a Wedding, a Christening, or a Funeral, or for anything else, please contact: Revd Alison Hardy, email: reverendalisonhardy@gmail.com

Tel: 07780295752.

Benefice administrator:

Libbi York – email:

Holsworthybenefice@icloud.com

Tel: 07717750198.



Please keep our beautiful graveyard clean. Please pick up after your dog.



Pyworthy Village Hall News

Martin Brennan, Chairman

Pub Night Friday 4th July

Massive congratulations to Laura Plender on winning big (£315.00) on 'Play Your Cards Right' 🎉🎉🎉. Laura, you played your cards perfectly and walked away with a fantastic prize. Well done and congratulations. 🙌🙌



Above: Laura Plender the lucky winner of "Play Your Cards Right". The next session of Play Your Cards Right is on Friday 8th August.

See page 32 for
easyfundraising. How you can
help our Village Hall, while you
shop online.

DATE FOR YOUR DIARY

**To raise funds for
Pyworthy Village Hall!**

**On Wednesday 13th
August I am holding a**



**in Holsworthy Memorial
Hall, we start at 9.00am
and close at 12 noon.**

**We will have a cake stall and run
a raffle, plus coffee and biscuits
will be available.**

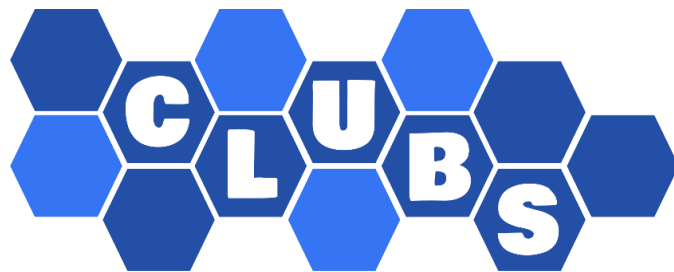
Donations needed:

- ❖ **Cakes for the cake stall &**
- ❖ **Raffle prizes.**

**If anyone is free on that morning
and could give their time and
help in any way, it would be
lovely to see you.**

**Please contact Janet Grant
Tel: 01409 259356.**





What's on at the Pyworthy Village Hall.....

Mondays: Line Dancing Club:

Complete Beginners:

5.30pm – 6.30pm

Beginners/Improvers,

6.30pm – 7.30pm

Intermediate, 7.30pm -9.30pm.

Tuesdays: Rural Art Group,

2.30pm – 4.30pm.

Returns on the 16th September.

Tuesdays: Line Dancing Club,

Intermediate, 7.30pm -9.30pm.

Tuesday evenings: Men's Skittles Team. Playing at home & away.

Wednesdays: Beginners Ballroom dancing & Latin class, including Sequence dancing 7.30pm – 9.00pm.

Thursdays: Gill's Golden Gang, 10.00am – 11.00am. **Taking a summer break, back in September.**

Thursdays: Coffee Mornings – **No coffee mornings during August, apart from annual outing.** From September - 1st & 3rd Thursdays of each month, from 11.10am.

Everybody welcome!

Thursdays: Creative Craft Club – 2nd & 4th Thursdays of each month, from 2.30pm until 4.30pm.

Please see club adverts throughout the paper, for contact details.

Village Hall Pub Nights!



This month our Social Evenings are:

Fridays the 8th & 22nd August!

Don't forget to come along and join us for Beer or whatever takes your fancy and perhaps have a go at our next 'Play Your Cards Right' session on **Friday the 8th of August.** We look forward to seeing you all.

Doors/Bar Opens at 7pm until late.

Everybody is welcome, come along and have a good time.



Upcoming Events at the Village Hall

Dates for your Diary!

Friday 3rd October 2025

An evening with **Paul Rendell** detailing the making of "**War Horse**" and many other films made on **Dartmoor**.

Saturday 1st November 2025

Live music event "**Not the Cowboys**" A rip roaring party band are coming to Pyworthy.

Friday 19th December 2025

A pre-Christmas party with "**Joy Machine**" playing music from the 60s to modern day Pop.

Watch this Space, further details to follow!

ENTERTAINMENT

Dates for your Diary



Our next meeting is on Wednesday

24th September

at 7.30pm.

Please feel welcome to join us.



Dates for your diary can be found on page 54 this month.

Potters Fish n Things

Potters will be taking a break for the month of August but will be back again in September with **some new dates.**

Further details to follow in next month's edition!

THE MAKING OF **WAR HORSE**

There will be a talk on the 3rd October in the Village Hall, about films that have been made on Dartmoor, War Horse being just one of them.

See poster on page 44 for full details.

Join

The club is on its summer break
but will be back in September.

Gill's Golden Gang

Strength & Balance Exercise Class
for the over 55's!

Held at:

Tuesday: Holsworthy
Scout Hut
10.30am to 11.30am &
12 noon to 1.00pm.

Thursdays: Pyworthy
Village Hall
10.00am to 11.00am.

Halwill Baptist Chapel
Hall
12.45pm to 1.45pm.

Contact Gill Aston on: 07854677784
for more information.

Coffee Morning



VILLAGE HALL COFFEE MORNING GROUP

**No meetings during August,
apart from the annual outing
for regular members.**

**Meetings will resume in
September.**

**For more information phone:
Brenda on: 01409 253015 or
Marie on: 01409 254924.**



**NEW MEMBERS ARE
VERY WELCOME!**

My Electricity Industry Recollections

Episode 7

My Life at Apprentice Training School

By Mike Godfrey



My electrical engineering life in the Central Electricity Generating Board (CEGB) started 8am on the 16th September 1963 when I had to report to the Training School in Bankside Power Station, which is now the Tate Modern, opposite St Pauls Cathedral. This meant that I had to leave home at about 6am and cycle down to the railway station in time to catch the 6.20 train to Waterloo and then on foot down Sumner Street to Blackfriars and thence to the Training School just in time to clock in for the 8am deadline. The Training School was very regimented and mechanically orientated and I was quite unhappy because I wanted to be an Electrical Engineer, made even worse because the head Instructor trying to get me to "change horses" and become a Mechanical Engineer, which I resisted quite firmly. Hence from day one we really did not get on. The training consisted of about 40% theory and 60% practical - all mechanical. There were only 6 Engineering trainees and about 30 Craft apprentices, all of which were Mechanical, and I was the only Electrical apprentice, the pressure was great to change but I stuck to my guns and continued with my electrical training on day release and also two evenings a week at College of Technology.

I had no real interest in the practical side of the work and our first task was to make a set of footprints (grips), I didn't have my heart in it and probably

turned out the worst effort of the 36 of us. At this point I was ready to sling it all in but I somehow pulled myself up by my bootstraps with the help of a young instructor called Colin, who understood my situation and encouraged me to carry on.

I got on quite well with all the other lads, which made life more bearable, it didn't pay to be not in tune with the majority, otherwise there were consequences. One example was we had enamel mugs, and it was not unknown for a very small hole to be drilled in the side, so that when the victim drank from it the contents dribbled down their front. Another was to screw their mug down to the bench when they weren't looking, then bring the large tea pot round and fill it to the brim with tea. There were far worse punishments, but I perhaps better not describe them here. The instructors were not immune from our pranks, particularly if they had upset us. We waited for all the instructors to leave and then we took the anvil out of the Blacksmiths Shop, tied a rope round it, climbed up onto the flat roof and hauled the anvil up onto the roof. He wasn't pleased but no one knew how it got up there!! Following my chats with Colin, I had a change of mindset and tackled the rest of the practical and theory training

continued on page 11...

My Life at Apprentice Training School continued

with a new attitude, so much so that I won the best practical and best theory Apprentice awards, which distinctly upset the Chief Instructor, (see pic of tools that I made and still have 62 years later). We had a presentation day in the school and Lord Hinton, who was the Chairman of the CEGB, came round and looked at my work. He picked up a pair of adjustable dividers, which was my Special Project, that had taken me weeks to make, staying on in the evenings to get them finished in time. He commented on how well made they were and with that the Chief Instructor said "would you like them" and then promptly gave them to him. I was left "gob smacked".



Above: The tools, (minus my adjustable dividers) I had to make during the 9 months at the training school.

Later that day we had to attend a presentation ceremony, with our families, ironically in Savoy Place, the hallowed chambers of the Institute of the Electrical Engineers. Lord Hinton was making the presentations, and I was just about to walk out to receive my prizes and the Boughton Trophy (see picture on page 12) the Chief Instructor said to me "by the way you are making the thank you response to Lord Hinton". I had but a few paces and even less seconds to think of something to say. I somehow managed to think of something suitable just about. However, I didn't forget the double whammy he dished out to me and a few years later I had been promoted way above his rank, and I had occasion to return to Bankside Power Station and I took the opportunity to tell him what I thought of him in no uncertain terms, and he had to sit there and take it. I also made it clear that if it came to my attention that he was behaving similarly to any of the new trainees I would be gunning for him and wouldn't be just a verbal dressing down next time.

The first 9 months of my apprenticeship I had spent doing something that I didn't really want to do and I had yet to get to grips with what Power Stations and Grid Systems were all about. I was totally unaware of the struggles and turmoil that was occurring with the new plant builds. All 36 Apprentices were allocated to established and fully operational Power Stations. I guess someone had made the decision not to let us get our hands on the new plant being built and commissioned. I was allocated to

continued on page 12...

My Life at Apprentice Training School continued ...

Acton Lane Power Station in north west London for the next 4 years. **Next time I start to learn to become an Electrical Power Engineer.**



Above: me at the age of 18 holding the Boughton Trophy presented to me by Lord Hinton, for winning the best apprentice award.

Holsworthy History Society

**Our next talk will be held in
September – details will be
published in the next edition.**

**For more information about the
History Society contact:
holsworthyhistorysociety@gmail.com**

Margaret Stacey

*An interesting piece of local history.
I was lent a book called Pyworthy,
by Joyce Crutcher. Below is a
newspaper cutting, which I have
scanned for you.*

50 years ago, August 23, 1958
Widespread havoc followed in the wake of a severe thunderstorm which swept with terrifying suddenness across parts of Devon and Cornwall on Tuesday, and torrential rain flooded normally placid rivers and streams which burst their banks and inundated scores of business premises and homes. One of the worst hit hamlets was Derril, near Pyworthy, where firemen from Holsworthy rushed at the height of the freak storm to rescue a retired 70 year old farmer and his wife from the ruins of their cottage, half wrecked by a thunderbolt and flood water. Mr Hubert James Curtis, of Homelea and his 71 year old wife, Edith had taken refuge in a bedroom as flood water burst the banks of a stream running a few feet from their home and engulfed the ground floor. As they watched anxiously the rising torrent surrounding them, Mr Curtis saw a vivid flash and heard a tremendous crack. Half the house collapsed demolishing an adjoining bedroom, the kitchen and part of the living quarters below.

Pyworthy MOT Ltd



Typical opening hours depending on school times and holidays.

Monday: 9.00am until 1.00pm
Tuesday: 9.00am until 4.30pm
Wednesday: 7.30am until 4.30pm
Thursday: 7.30am until 4.30pm
Friday: 7.30am until 4.30pm or 7.30am until 1.00pm.

For all your servicing and general repairs, MOTs and MOT work. M.O.T.s can be booked 30 days in advance of expiry, so booking early can catch and give time to repair, unknown faults and problems.



Call Simon - Tel: 01409 254275

Courtesy car available.

Line Dancing!



New Members welcome.



**For more information call Brenda
on: 01409 253015**

Line Dancing Classes

Our Line dancing classes are held
on: **Mondays** in
Pyworthy Village Hall.

Complete Beginners:
5.30pm – 6.30pm.

Beginners/Improvers:
6.30pm – 7.30pm &

Intermediate level:
7.30pm – 9.30pm.

Tuesdays: Intermediate level,
7.30pm – 9.30pm.

All classes cost just £5.

Come and join us!

Evelyn's Walks Update

By Evelyn Sharman,
Group Organiser

Evelyn's Walks group near Chilsworthy



On Monday 14th July, we met at East Vognacott near Chilsworthy with kind permission of the landowners. I had worried about doing this walk as we had recently experienced that spell of extreme heat. I needn't have worried as the weather had changed considerably overnight & we actually had quite a downpour while we waited to set off. As we followed the track out of the yard, we reminisced about how impassable it used to be even in summer. Thankfully, drainage work was done a few years ago which has improved the situation considerably & it's difficult to imagine how bad it was. DCC arranged to do an annual cut along the green lane. It had obviously been done very recently & we were most grateful. We stopped at what is known as ScorPhill & contemplated the fact that the census of 1901 confirmed that the Hill family used to live in a cottage there. It must have been quite cosy with Mr & Mrs Hill, their five children & a lodger, Richard Sillifant. The census of 1911 confirmed that the Ball family then occupied the property. Both Mr Hill & Mr Ball described themselves as farm labourers on the census form. There is no evidence of the cottage at all now.

We continued on what is officially Holsworthy Hamlet's footpath No. 3 which took us across several fields. Some of them are obviously cultivated for forage. Others are more meadow-like. There was an abundance of moths & butterflies in the meadows, as well as lots of pesky horseflies. When we reached the road at Honeycroft Cross, we turned right towards Holsworthy Beacon. The views were far reaching towards the north & south. When we reached the entrance to Gearn's Farm, we followed the footpath No. 4 into the farmyard & along the edge of a couple of fields back towards ScorPhill. It was only a short walk from there back to our cars. I believe everyone enjoyed the walk, which was a new route for several people. Overall, it was approx. three miles & took no more than two hours. The next walk will be on Monday 11th August. We will be setting off from the Village Hall at Bratton Clovelly at 10am. If you would like any more information, you are welcome to contact me.

Evelyn Sharman Tel: 01409 259 848

Email:

evelyn.sharman@btinternet.com

St. Swithun's Church Gift Aid Donation form is below.
If you missed the Patronal Festival, you can still make a donation.

Please accept my donation as a GIFT AID donation – part of the church's Patronal Festival.

Name

Address

..... Signed:

I am a UK taxpayer and understand that if I pay less Income Tax and/or Capital Gains Tax than the amount of Gift Aid claimed on all my donations in that tax year it is my responsibility to pay any difference.

**Please leave it in the donation jar in church or give it to Liffy Lowes at:
High View, Derriton Road, Pyworthy (two down from the village hall) or Janet Grant
at Hacketts End, Lower Village, Pyworthy. OR**

BACS a donation: PCC Pyworthy, 30-94-91, 29960068.



JULY'S PYWORTHY POSER QUIZ ANSWERS:

1. Brazil (Portuguese is still the native tongue).
2. Egypt, Fairum.
3. 1 Million! Amazing, but think of a gallon of water!
4. No.
5. Slowing down by 1.8 seconds per century. 600 million years ago, a day lasted just 21hrs!
6. No. Mauna Kea & Mauna Loa in Hawaii - both twin volcanoes are, due to being 4.2 km submerged, 10.2 km in total. Mt. Everest is 8.8 km.
7. No. They breathe through spiracles: 9-10 openings depending on the species.
8. Yes. Maximum hp generated can be 24hp!
9. No. They walk on the riverbed but come up for air.
10. Yes, between 1,000 - 1,200 to be precise! (So, keep those used stamps coming for the Hedgehog Preservation Society please, to combat Slugs & Snails).

Try this month's quiz on page 33. Pyworthy Pilgrim.

In the Spotlight



Mike Godfrey with a display of tools made as a top engineering apprentice.

Name: Mike Godfrey

Age: 79

Occupation: Farmer, Chartered Electrical Engineer, Business owner - Algo Electrical. Retired, twice, once after 30 years in the power industry and again after heart surgery.

Place Of Birth: Staines (now Staines-Upon-Thames) formerly Middlesex, now Surrey. Moved to Pyworthy from Kent after holidays in the Bideford area.

What is the best thing about Pyworthy and why?

It's like going back 25 years in time. It's a quiet place and people are nice, generally.

What one thing would you change about Pyworthy and why?

I would like to wind back the industry happening in Pyworthy, the solar farms or solar sites, as I like to call them.

Describe yourself in three words:

Involved, in too many things (laughs); engaged (mind), family man.

How do you like to spend your free time?

I don't seem to have much spare time but when I do I like to sit by the stream, at the bottom of the garden, listen to the birds and water and watch my (feral) cats.

What one thing have you always wanted to do, try or learn?

Woodwork. I have a fully equipped workshop, but I can't find time to do any. I would like to do some wood turning and construct furniture.

If you could meet anyone living or dead, who would it be?

Having reluctantly eliminated Sebastian Ziani de Ferranti and Alessandro Volta, pioneers of electricity; Mike's final choice was civil engineer Isambard Kingdom Brunel. (BR)



Thanks go to Bryony Rylett for your research.

Continued on page 17



If you won a million pounds, what would you do with the money?

Take time out and travel to New Zealand, by boat, then spend time travelling through the country. I would give the rest to family and charity.

If you were granted three wishes, what would they be (extra wishes excluded).

1. Good health for myself and my family.
2. For all the conflicts around the world to be resolved.
3. An opportunity to get together with departed family one more time.

If you had to flee your home at very short notice, due to a fire for example, what three items would you take?

All the family photographs, a few mementos from my parents, legal documents.

Pyworthy Rural Art Group

Pyworthy ART



Art classes will return on the 16th September.

The programme for September will be in the next edition.

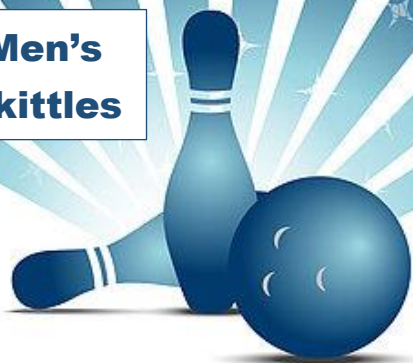
Thanks to everybody who came to our exhibition in the Church held in July, you can see some photos on page 29.

**For further information contact
Janet Grant Tel: 01409 259356**

Why is 2025 a Rare Year?

The year 2025 is a "perfect square year" because it's the product of a number multiplied by itself – $45 \times 45 = 2025$, a phenomenon that hasn't happened for decades. The last time it occurred in 1936 (44×44), President Franklin D. Roosevelt was in office and America was slogging through the Great Depression.

Men's Skittles



Men's Skittles!

Pyworthy has a Men's Skittles Team, which meet on Tuesday evenings. If you would be interested in joining them, please contact:

Andrew on 07531186466 or 01409 253509.

Training will be given!

Make a Donation to the Pyworthy Post, It's Simple!

If you would like to give a donation towards the printing cost of the Pyworthy Post – see details below.

BACS details:

Account number: 01086227

Sort code: 40-24-25

Account name: Pyworthy Post

Type of account: Community account.

Please email me your name and address for a receipt.

A big thank you to all those who have already donated to the cost of printing the paper, which is appreciated.



Glebe House Cottages, Bridgerule

www.glebehousecottages.co.uk

Telephone: 01288 381272

Accommodation

6 luxury self-catering cottages all recently refurbished to a high standard.

Beautiful 5 acre site with a huge amount of facilities for all ages including:

- ❖ Heated outdoor swimming pool
- ❖ Tennis court
- ❖ Stunning formal gardens
- ❖ Cellar bar & games room
- ❖ Children's play area,
- ❖ Woodland walk
- ❖ Hammock area
- ❖ Croquet
- ❖ Firepit
- ❖ BBQ's plus plenty more.

10% discount for friends & families of local residents.



Party Venue

Why not host your next party at Glebe House Cottage?

We have so many options to make your party stand out.

Make it a party you won't forget!

- ❖ We can host parties from 15 guests up to 200.
- ❖ Formal garden parties with a marquee
- ❖ Celebrations in our secret cellar bar
- ❖ Fun tailor-made children's parties!
- ❖ "Have a splash with a pool party!"
- ❖ "Birthday, Anniversaries, Christening or any celebrations!"



GARDENING MATTERS from CRINACOTT

By Mike Godfrey, keen gardener



This month the weather has been quite reasonable for gardeners, with a mixture of sunny spells and rainy periods. Not so good though for those on holiday. Most outdoor plants including grass and weeds of course have grown extraordinarily well; in fact, I would go as far as to say that we have been totally overwhelmed here by nature this year. Many of our footpaths which we try to keep mowed have been lost to almost impenetrable undergrowth. We had to mow our front paddock again this year, which is usually kept well down by our pet goats and sheep grazing, but even they can't cope with the exceptional growth. It looks like we will be getting a second cut of haylage this year, something we haven't been able to do for the last probably 10 years or so. Last year we had a very mediocre crop of fruit from our trees and soft fruit bushes but this year it seems to be probably the best crop we have had, possibly since we planted the fruit trees and bushes in 2004. I think we are going to be overwhelmed with apples, pears, plums as well as other soft fruit, much of which I haven't had time to pick this year. Despite all these potential bumper crops my runner beans have been much slower in growth and have virtually produced few flowers and hence runner beans. I think this must be down to the very hot midday temperatures in the polytunnels. I also forgot to spray them around midday each day which would normally help the flowers to set.

My attempts to create a wildflower area in the Orchard have unfortunately been far from successful, which has been compounded by exceptional grass growth this year. This seems to have yet again smothered any emerging wildflowers. I am rapidly coming to the conclusion that I am going to have to start again, mow the grass extremely short and then plant yellow rattle plugs to hopefully keep the grass suppressed. I still have hopes that I can make some progress on creating some more wildlife ponds but every time I get organised to do something another farm or electrical job of greater importance seems to come along.

I have come up with a couple new gardening ideas this year. Firstly, I was faced with planting out around 100 leek plants that I had sown from seed. The normal method is to make a deep hole with a dibber, trim the roots and top, put in to the bottom of the hole, fill the hole with water, which also washes in some soil around the roots and then let them get on with it to grow to the diameter of the hole. So having got the plants ready pushed the dibber into the ground, which was so hard it only went in about $\frac{3}{4}$ inch, when it needed to be 4-6 inches. I gave it some thought and came up with the idea of using a 1.5 inch post hole digger. With a battery-operated drill I quickly dug/bored the requisite number of holes. The leeks were planted in 2-3 hours instead what would have been 2-3 back breaking days.

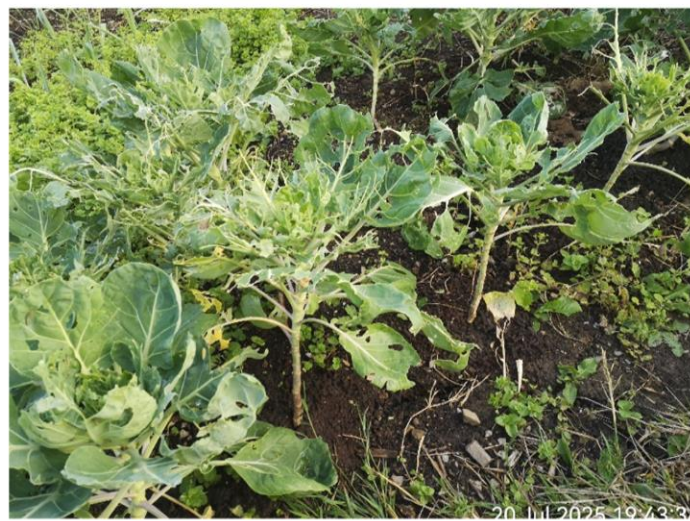
My other idea related to brussel and red cabbage plants. Each year they

continued on page 20

GARDENING MATTERS from CRINACOTT
continued from page 19.....

suffer significant damage from slugs, snails and the cabbage white caterpillars. So, I decided to plant the majority of them in a polytunnel and a few outside. The results are pretty dramatic, in the poly tunnels the damage is minimal. Whereas outside absolute devastation. I have checked both sets of plants equally and removed numerous slugs, snails and caterpillars to the delight of the chickens. As you will see from the pictures the inside plants are really thriving, with minimal damage and are approximately 2 foot high. On the other hand, the outside plants are only about 1 foot high and virtually devoid of leaves. The red cabbage didn't survive the onslaught. Hopefully we can look forward to some sizeable veg this winter.

**Below - Jobs for this month,
if you haven't already
done them:-**



Mike's outside sprouts, not looking so good!



Mike's sprout plants protected by his polytunnel.

- As always, keep weeds under control, don't let them get on top of you. Don't forget the good old Hoe or if necessary, the strimmer to stop weeds going to seed. Remember one year's seeds equate to seven years weeds.
- Continue to sow salad crop seeds directly in prepared ground now it has warmed up. Try not to sow all seeds in one go, sow to provide continuity of supply rather than have the whole crop ready at the same time, to prevent a lot going to waste or the compost bin.
- Continue to watch out for slugs and snails, water on nemetodes or alternatively use beer traps or dry bran in a pot on its side, to prevent it getting wet. These can be used in combination as well to control your slug and snail population.
- If you are growing brassicas such as cabbage or Brussel Sprouts, be alert to the cabbage white and its eggs, which quickly turn into ravenous caterpillars. These can decimate the young leaves on these plants within a day.

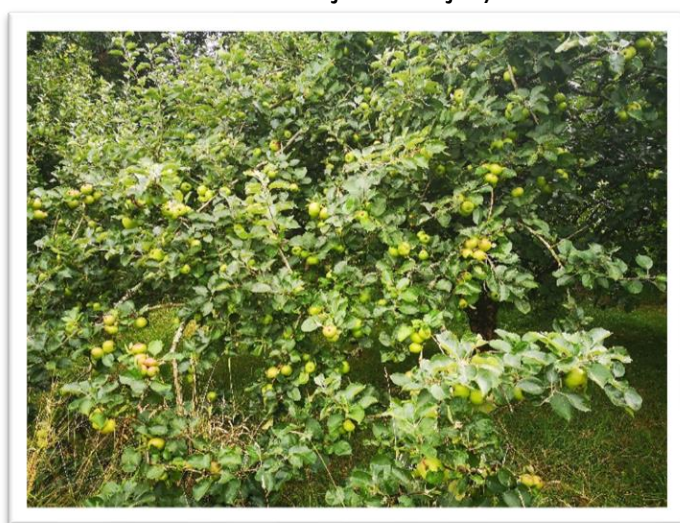
Continued on page 21.....

Gardening jobs for this month, if you haven't already done them, continued from page 20:-

- Don't forget to continue to keep hanging baskets and containers watered, daily in dry weather. Also, if you didn't mix some plant feed granules with your compost, add a liquid feed about once a week.
- Also feed sweet peas with liquid feed about every 7-10 days. To get the best flowering from your plant, cut most of the flowers off once a week and pinch out the side shoots and the very tops. That encourages upward growth and more flowers
- Don't forget to pinch side shoots from your tomatoes at least once a week, to encourage the main growth, remove the leaves progressively from the bottom upwards, as the lower tomatoes start to ripen. As the season moves on pinch out the top when the plant is tall enough to allow it to focus on ripening the existing crop. Once the top is pinched out be more vigilant regarding side shoots which can appear and grow 12 inches in around a week on some varieties. Also make sure that you give them a weekly dose of tomerite or similar to obviate magnesium deficiencies.
- Make sure that you regularly pick your ripe crops, including all your soft fruit, to get the best from them.
- Harvest soft fruit regularly
- Cut back early flowering shrubs where necessary and summer prune Wisteria
- If you are growing climbing beans pinch out the tops. This will encourage the plants to thicken up and put out side shoots for more beans.
- Similarly make sure that you dead head your flowers, particularly roses to promote new flowers
- Enjoy your garden whilst we have good weather over the next few months. Find a nice bit of shade with a cool drink and just enjoy.



Above: Left Mike's Katy apple tree &
Right: Mike's Bramley apple tree.



**If anyone needs to contact me, then please
contact me on 01409 253401 or 07798
647041 or by e-mail at
mikecrinacott1@gmail.com.**



**“Romeo and Juliet” performed by
Four Forty theatre at Badock Gardens,
Holsworthy on 27th June:**

Review by Alice Chandler (aged 13)

In the comedy production of “Romeo and Juliet” three actors played ten main characters along with smaller parts. These were Romeo, Juliet, Nurse, Mercutio and multiple other key parts.

The play was originally written as a traditional Shakespearean tragedy which explores the ideas of true love and forbidden romance. There are two feuding families, the Montagues and the Capulets, who have been sworn enemies for as long as either can remember. This is why Romeo and Juliet's love is forbidden.

In the beginning the Capulets throw a party and the Montague cousins (Romeo and Mercutio) sneak in, which leads to Romeo meeting Juliet and falling in love with her. He goes to see her on her balcony later that night and they arrange to be married the next morning.

After the marriage there is a fight between Mercutio and Tybalt that Romeo accidentally gets involved with and stabs Tybalt, leading to his banishment. Father Lawrence helps Juliet form a plan in which she takes a potion to make her appear dead, but Romeo is misinformed and takes poison, thinking Juliet is really dead.

But when Juliet awakes, she finds Romeo dead and, in extreme grief, stabs herself.

I truly enjoyed this production, the comedy twist making the whole performance highly entertaining. They added their own-written songs which had the whole audience laughing. They involved members on the front row, giving them small roles and silly jobs. I particularly enjoyed a scene near the end which had the complication of involving two characters played by the same actor. They overcame this by using a small hand-held curtain that enabled the actor to do a quick prop change of a wig and purple priest's sash. As the other characters exited, they did a very good sketch where the actor's hand came up (while his arm remained hidden behind the curtain) and tapped him on the shoulder before grabbing hold of his collar and pulling him down behind the curtain.

Four Forty theatre perform a double bill of “Much ado about nothing” and “Macbeth” at Tapely Park, Bideford on 12th August - details/tickets from the Plough Arts Centre, Torrington.

**Calling all Budding Young
Reporters**

Well done to Alice! Her creative writing may inspire other local young people to write for the Pyworthy Post. This would give a different perspective on local life, events and the local environment.

Email Marion at:
pyworthy@post.com

M.A.G Double Glazing Repairs

- ❖ Replacement of misty or broken glass units
- ❖ Replacement of hinges, handles, locks & seals
- ❖ Letter boxes and cat flaps installed
- ❖ Installation of fascias, soffits & guttering

Over 15 years' experience



Call MARK for friendly advice and a
NO obligation quotation.

Tel: 07969 234161



EVELYN SHARMAN

Professional Driving Tuition (DVSA ADI)

Telephone: 01409 259848

Mobile: 07885 352 082

Email: evelyn.sharman@btinternet.com

WHAT'S ON AT HOLSWORTHY LIBRARY – AUGUST 2025



Library News!

- **Lloyds Bank Community Banking**, Monday 4th & 18th – 2:00pm–4:00pm
- **Story & Activity Time with Bude Sea Pool**, Wednesday 6th 10:30am–12:00pm. Free but places are limited, book with library staff/Eventbrite.
- **Lego Challenge Days**, Thursday 7th & 21st – 11–4pm. Join us and get creative with Lego! Free drop in sessions.
- **Craft Activity for Children: Junk Modelling**, Wednesday 13th – 11am–4pm, free drop in session.
- **Gardening Cuppa & Chat**, Wednesday 20th – 2:00pm–3:00pm. Everyone welcome.
- **Board Games & Biscuits**, Thursday 14th & 28th 11am–4pm. We have a great range of board games for you to enjoy. All ages welcome! Free drop in session.
- **Craft Activity for Children: Weave a Paper Fish**, Wednesday 20th – 10:30am–12:00pm, free drop in session.
- **Craft Activity for Children: Make a Jellyfish**, Wednesday 27th – 2pm–4pm, free drop in session.
- **Lego and games** for children. Every Saturday – 10am–12pm

Summer Book Quest Reading Challenge. Children can join the challenge for free and earn rewards as they read books they love!

Holsworthy Library - There are lots of exciting things happening at your local library. In addition to a great range of books you can use your library membership to access free eBooks and audiobooks via the Borrowbox app. We also have free public computers and Wi-Fi as well as printing, copying and scanning facilities. It is free to join the library, and we are a friendly, welcoming space open to all. Free hot drinks are available, and people are encouraged to use the library as a place to relax, work and socialise as well as to find their next great read!

Opening Hours:
Monday 2pm-5pm
Tuesday Closed
Wednesday 10am-6pm
Thursday 10am-5pm
Friday Closed
Saturday 10am-1pm - Sundays Closed.



CHURCH NEWS

By Liffy Lowes, on behalf
of St. Swithun's Church



Summer seems to have arrived this year! We have had some wonderful weather during the last month, even the farmers must have been pleased when it seemed so straightforward to harvest silage! And now we've had some welcome rain too! But this morning is lovely and I think we may be in for a few more days of fair weather, perhaps not quite as hot as some that we've had which will be something of a relief. I noticed that the grass in the churchyard was beginning to look quite scorched so the rain will have been welcomed for that as well. Most of this month seems to have been taken up by preparations for St Swithun's annual Gift Day. We had some wonderful flower arrangements to see, all depicting Childhood Memories; it was interesting that we had several seaside memories and picnics in hayfields, nobody had visits to Disney World or holidays abroad then! How times have changed! Our local Art Group had their annual display of work done over the year. I say this every time, but it always amazes me this such a small part of the country can produce such lovely work. The talent shown is amazing and it's always a pleasure to wander around to see what's there. This year we had honeyeaters, tractors and landscapes in abundance, all beautifully presented, and I think all

involved should be really proud of what they've achieved. However, St Swithun's Gift Day is also a fund-raising event to raise money for the church; I'm afraid nearly all churches have to do that these days. The upkeep of a church is not easy, this year alone we are having to repair one of the stained-glass windows (you may have noticed we are missing a window), its neighbour is in a similar condition and will require work before too long. We have already had some of the stained glass repaired this year. The tower needs work on it, we are about to have that examined, and the church interior also needs painting. All these things cost a lot of money; even though grants are available, fund raising is a never-ending job and we are always so grateful for any donations. I would like to thank all those people who took part in the Gift Day, those who exhibited, also those who had stalls, those who prepared the church for the weekend and those who provided refreshments over the two days. I dare not mention names because I'd miss some for sure, but I would like to thank Bryn who played the piano for us on Sunday afternoon. He has just passed his grade 2 exam; I have no reason to doubt that he will go further than that.

Our Family Service in August is taking place on the AFTERNOON of August 3rd. There will be several crafts for the children to celebrate Lammass, so please do come along; it may be possible to hold this outside if the weather is good. Children who come to our family services do enjoy it, it is only a shame more young families don't turn up, the service lasts under an hour and we always have refreshments. **Continued on page 26...**

St. Swithun's News continued from page 25 ...

Lummas Day celebrations – 3rd August, please try to come along.

As I write this, most schools have already broken up, others are about to. I do hope the weather behaves itself and holidays will be enjoyed, no matter where you are. But maybe we should spare a thought for the parts of the world where there is so much conflict, where people struggle to get food, where climate change has caused so much havoc. They need our prayers at this time; we should be grateful that we live where we do. I wish you all well, enjoy the next few weeks, think and pray for those less fortunate than we are.
Liffy



St Petroc Church, Hollacombe

CREAM TEA

Our Church will be holding a Cream Tea
on the afternoon of

Saturday 9th August,

for the second year in & around the church. Near to the Ruby Way it is convenient to walk, cycle, ride or the conventional motor mode of transport. Do come & enjoy an afternoon having tea, chatting to friends old & new & catching up.

Margaret Stacey

See the Patronal Festival photos on pages 29 & 30.



Meet the Police and Have Your Say!

Dear residents,

We are encouraging the public to have their say, at an event at Holsworthy Cattle Market on the **13th August at 9.00am.**

This community meeting gives you the opportunity to raise any concerns and to find out what we are doing to tackle the issues that matter to you.

Postcode: EX22 7FA



Shapland Accountancy

We are a local long established family run firm with over 40 years experience. We provide Accountancy & Bookkeeping Services throughout Devon and Cornwall.

From small to large companies, Sole Traders, Partnerships, Limited Companies whatever you need, we can help.

Bookkeeping, Tax returns, Payroll, VAT or just advice, contact us to see what we can do for you.

Email Us: admin@shaplandaccountancy.co.uk



Find us on
Facebook



Bude Jazz Club

The Falcon Hotel, Bude.
EX23 8SD

Sundays 8pm – 10.30pm

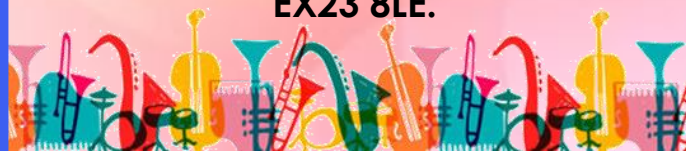
Pete Allen Jazz Band

Saturday 23 August 2025 8pm

Tickets only event £15:

Available on club nights or
email joantrewin7@gmail.com or
with S.A.E. and cheque payable to
**Bude Jazz Club, to Joan Trewin, 7
the Crescent, Bude, Cornwall.**

EX23 8LE.



Facebook – Bude Jazz Club
www.budejazzclub@gmail.com

No Transport? Need a pickme-up?

Ring & Ride

- Door-to-door service for all ages
- Wheelchair & scooter accessible

Cars for Care

- Door-to-door service
- Times to suit your appointments
- 45/50p per mile

Here for Hire

- Mini Bus Hire for Community Groups & Charities
- £100/day - £65/evening
- Self drive (experience of driving a larger vehicle)

Call

01409 259001

office@holsworthy ruraltransport.co.uk

The Carroll Suite, Holsworthy Memorial Hall,
Holsworthy EX22 6DJ



Pyworthy Parish Website is LIVE!

The Pyworthy Post and other parish news and events are now online at: www.pyworthy-parish.co.uk. The website is continuously developing and we are always looking for new content and ideas, so please visit the website and feel free to contribute either through the links in the website or directly to info@pyworthy-parish.co.uk. You can also reach the website using the QR code.

St. Swithun's Church Patronal Festival



If you weren't able to come along to the Patronal Festival, it's not too late to make a donation to our church. Please see the Gift Aid form on page 15. You could transfer a donation via BACS if you prefer: PCC Pyworthy, 30-94-91, 29960068. Thank you.

More lovely displays in the Church



Next Month – Pyworthy's Annual Village Show!

Available Now!

Time to get organised!

Pyworthy Village Show 2025

Saturday 6th September

Buy your programmes from:

Marie Heard at: 9 Derriton Road. Pyworthy,

Anita Burnard at: Amberlea, Pyworthy or

Wendy Ward at: 'Wordona', Derril.

ONLY 50p

The programme includes this year's classes and everything you need to know.



Update on Derril Water Solar Park

Some big milestones at Derril Water have been achieved in July, the most notable of which has been energising the connection between the site and the Pyworthy substation.

We are now energising further into the site, with the 'customer substation' next, followed by the seven transformers distributed around the site, and then the 100+ inverters. As these works involve high voltages and access to the grid it is imperative that appropriate safety standards and procedures are followed, and Ethical Power have proved themselves to be experts in this regard.

Once the solar park is in the operational phase sheep will be used to keep the grass in check. In the meantime, contractors have been in to mow it to keep it from making contact with sensitive equipment.



Above: Panel installation

By Simon
Peltenburg on
behalf of the
Derril Water
Solar Coop



**Above: Aerial view of the site
looking west to east**

A big thank you to everyone in the community for their patience through the construction phase of this exciting project that is owned by over 9,000 households from across the UK. Please see <https://derrilwater.com/> for more details.

**A website has been set up at
<https://derrilwater.com/> which will
be a key resource for the Coop
members.**



THANK YOU

A big "Thank you", to everyone who came along to the Hawaiian themed line dance event and donated to the raffle. We raised **£275** for the Bude Sea Pool.

Brenda Martin

Perseids Meteor Showers

The Perseid meteor shower is one of the best showers of the year with around 100 meteors per hour at its peak, in perfect conditions.

This year, it is active between **17th July and 24th August - peaking on the night of 12th August into 13th August.**



**DOGS TO BE
KEPT ON A LEAD**



**PLEASE
NO FOULING**

FL^{OR}ATING BYE

**INSTOW BEACH, FROM 6.15PM
SUNDAY 10 AUGUST 2025
MEMORIAL EVENT**

www.floatingbye.co.uk



North Devon
Hospice

Sign up & help the Village Hall



**Help us raise
FREE donations**
every time you **shop online**

How to sign up

1. Visit easyfundraising.org.uk
2. Search for Pyworthy Village Hall and support our cause
3. Raise FREE donations for us when shopping



Scan me

4,500 online sites will give us a free donation
when you shop with them - at no extra cost to you!



Over £34 million raised



1.9 million users

Read online at:
<https://pyworthy-parish.co.uk/>

and view the
paper in full
colour.

(don't use a
search engine)

**SPEED
LIMIT
30**



Holsworthy Food Bank

Thank you Pyworthy for your donations, 10.75 kgs this month. Donations are always welcome to help those in need.

You can donate tinned food, packets or boxes of food. Unfortunately, fresh produce cannot be accepted.

Donations can be left in the box at the back of St. Swithun's Church, Pyworthy, which is open every day. Thank you.

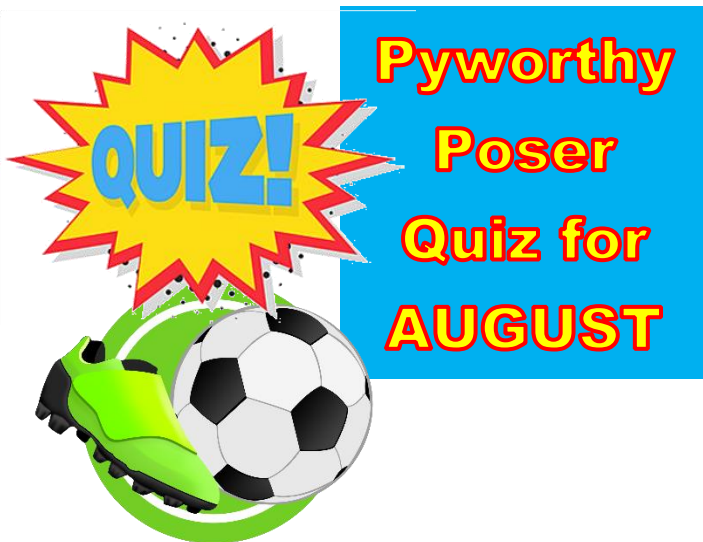
Creative Craft Club

The afternoon craft club takes place in Pyworthy Village Hall on the 2nd & 4th Thursday of each month, at 2.30pm until 4.30pm.

A donation of just £2 towards the hall is all it costs!

Come along and join us, just bring your own craft project to do, & see what others are doing. Plenty of help available, if you have a problem with your craft project.

Phone Marie on: 01409 254924



A new 2025/26 Football Season is upon us! For a little light relief before the serious stuff, then identify the following Clubs from the (dubious) description!

1. A human body organ by a pond?
2. Robin Hood's wood?
3. The latest stone fortress?
4. In 'mint' condition?
5. More than nine kids before bacon?
6. Secure Nomads?
7. A cow's meadow?
8. Bullock crossing water?
9. Destroy the Pork Joint?
10. Fast car visits holiday venue?
11. A dirty stream?
12. Shiny weight?



The answers will be in the next Pyworthy Post.

By The Pyworthy Pilgrim



Torridge
District Council

Pyworthy Bin Collections



AUGUST 2025 - Pyworthy Village, other villages may have a different collection schedule.

Black bag collection days are:

Friday 8th August

Friday 22nd August

Recycling- Every Monday apart from Bank holiday week, when the collection will be on Tuesday 26th August.

Boxes/Bags & Food Caddy

Weekly collection of 2 x boxes & 2 x bags. Weekly collection of food waste in caddy.

Garden Waste Collection dates:

Monday 4th August

Monday 18th August.

For more information go to:

www.torridge.gov.uk

Or phone:

01237 428700



Changes for Older Drivers from August 2025!

Starting **August 2025**, the UK is rolling out a significant update to its driving license rules that specifically impacts **drivers aged 70 and older**. This change, introduced by the **Driver and Vehicle Licensing Agency (DVLA)**, is part of a broader government initiative to enhance road safety, modernize medical reporting requirements, and ensure drivers maintain fitness to drive as they age.

What's Changing in August 2025?

Mandatory Medical Screening for Drivers Aged 70+

Currently, UK drivers must renew their driving license at age 70 and every 3 years thereafter. While self-declaration of fitness to drive has long been the standard, the **new rules will require a formal medical assessment** during the renewal process starting **August 1, 2025**.

Key changes include:

- **Mandatory GP certification** of physical and cognitive fitness to drive
- A potential **DVLA-initiated driving assessment** for individuals flagged through health reports or previous incidents
- Enhanced **screening for conditions** like dementia, vision impairment, and cardiovascular risks
- **Digital submission** of medical records, with consent, to streamline processing

These assessments aim to ensure older drivers are safe behind the wheel without unfairly restricting their independence.

The government cites several goals behind this reform:

- **Improve road safety** through early detection of medical conditions
- **Reduce accidents** involving elderly drivers, particularly in urban and high-traffic areas
- **Modernize licensing standards** in line with other advanced nations
- **Support aging in place**, allowing seniors to stay mobile as long as it's safe

What Will Drivers Aged 70+ Need to Do?

Here's a step-by-step guide to the new process starting in August 2025:

Step 1: Renewal Reminder from DVLA

- You'll receive a reminder 90 days before your 70th birthday or next 3-year renewal.

Step 2: Schedule Medical Assessment

- Book an appointment with your GP or authorized medical provider.
- The exam will include **vision, cognitive screening, and health history**.

Continued on page 35....

Changes Coming for Older Drivers continued...

Step 3: Submit Documentation

- Your doctor will complete a medical fitness form (D4 or digital equivalent).
- Submit via post or the new **DVLA online portal**.

Step 4: Await DVLA Decision

- If medical clearance is given, your license is renewed for 3 years.
- If concerns arise, DVLA may request:
 - An **on-road driving assessment**, or
 - Further medical evaluations.

Find lots more detailed information online.

[New UK Driving License Rule for Seniors Begins August 2025 – Essential Changes for Drivers Aged 70 and Above](#)

J. Mansell 07896 945889

General Builder

General Building, Property Maintenance & Repairs

**Painting, Decorating, Plastering, Rendering,
Brickwork, Patios, Concrete, Foundations
Roofing, Carpentry & Joinery**

**Gutters, Plumbing, Drainage, Cob Conservation,
Limewash & Lime Plastering**

**Kitchens, Bathrooms, Chimney Lining,
Stoves & Garden Landscaping**

Jamescancott@gmail.com



Holiday activities: Clawton Primary School is open 3 afternoons during the holidays for anybody wishing to pop along. See page 49 for full details. Northam Burrows have a full programme of activities, see Torridge Council website.

Trigon Farm, Derriton, Holsworthy. EX22 6JU

Forthcoming Events & courses:

Tomato Feast – 17th August

Preservation course – 6th September

Permaculture course – 28th September

Dried flowers wreath workshop – 11th October

Christmas wreath workshop – 29th November/6th December

Christmas table arrangement workshop – 20th December

Book today at:

<https://www.trigonfarm.co.uk/book-online>



Opening hours:
Tuesdays, 9.00am till 6.00pm.
Other day by appointment.

www.trigonfarm.co.uk
Call Al on Tel: 07988484069

More Useful Contact numbers:



Holsworthy Food Bank:
Tel: 01271 377077

Holsworthy Community Fridge:
email
mtrudgill@dmatschools.org.uk

Samaritans: Tel: 116 123

Age UK: Tel: 0800 055 6112

Domestic Abuse Women's Aid:
Tel: 0808 2000 247

Domestic Abuse Men's Advice line:
Tel: 0808 8010 327

Childline: Tel: 0800 1111

Domestic Abuse Helpline



Phone:

0808 2000247 for free &
confidential advice.

More information available
online.

If in danger phone: 999





Hi there Humans!

We were both delighted to read a recent article in the Western Morning News (21/7) when it was delivered to Hedgehog House which gave excellent advice on the help you can provide (at nil cost!). Both Harriet & I are both well and the little hogs (Henry, Herbert & Hilda) are growing fast as youngsters do. If you want to read further, then have a quiet look at: hedgehogstreet.org/go-wild-for-hedgehogs

A shallow dish of water would be greatly appreciated!

Harry & Harriet H.

**Keep saving your
used stamps!**



ARTHUR W. BRYANT FUNERAL SERVICE

CAMELFORD
01840 214891

BUDE
01288 352282

HOLSWORTHY
01409 253000

LAUNCESTON
01566 232426

**INDEPENDENT FAMILY
FUNERAL SERVICE**

MEMORIAL MASONRY

DIRECT CREMATION

PRE PAYMENT FUNERAL PLANS

**OUR FAMILY CARING FOR YOUR
FAMILY FOR OVER 50 YEARS**



AWBRYANT.CO.UK
CARING@AWBRYANT.CO.UK



DOG FOULING/DOGS OFF LEAD

Following a number of recent and ongoing incidents of dog fouling in the churchyard and surrounding streets in the village centre, residents are reminded that dogs should be kept on leads and not allowed to roam unaccompanied.

Residents are asked to clear up after their dogs at all times.



**Pyworthy Parish
Council.**

Slimming World taste the *freedom*



Contact your local Slimming World Consultant
and join a warm and friendly group today!

NEW VENUE

Bude

Bude Rugby Club
Wednesdays
5.30pm & 7.00pm

Holsworthy

Holsworthy Memorial Hall
Tuesdays
5.30pm & 7.00pm
Thursdays
9.00am & 10.30am



slimmingworld.co.uk

touching hearts, changing lives

Pyworthy Post

Deadline

The PRINT
deadline for the
next Pyworthy
Post is: Monday
25th August 2025
at
9am.

Please email
your news as
early as possible.
Thank you.

View Pyworthy
Post online in
colour. Search:

[https://pyworthy-
parish.co.uk/](https://pyworthy-parish.co.uk/)

No Dog Fouling



Bag it - Bin it

Sunrise, Sunset Times for the coming month:



1st August 2025 (UK, Exeter)

☀ Sunrise time: 5.41am GMT

🌅 Sunset time: 20.58pm GMT

🕒 Length of day: 15 hrs 17 mins.

31st August 2025 (UK, Exeter)

☀ Sunrise time: 06.26am GMT

🌅 Sunset time: 20.00pm GMT

🕒 Length of day: 13 hrs 34 mins

Fire brigades attended 3 lithium-ion battery fires daily in 2024

By Brian Meadows of Nofix-Nofee

Fires caused by lithium-ion batteries, found in e-bikes and e-scooters, double in two years, with UK fire brigades addressing at least three lithium-ion battery fires every day in 2024.

Reports related to lithium-ion battery fires surged by 93% between 2022 and 2024 according to UK fire services and 11 people died and hundreds more injured cause by them.

	2022	2024
Fires linked to lithium-ion batteries	690	1330
Fires involving an electric bike	181	362
Fires involving an electric car	131	232
Fires involving an electric scooter	118	156

Lithium-ion batteries can be found in most rechargeable devices, and improper storage and battery overcharging are the most common cause of fire breakout.

Lithium-ion battery fires are different to other fires. Due to a chemical reaction, they burn extremely hot and fast. They spread rapidly and can be difficult to put out, even reignite hours or even days later. These fires release dangerous gases, including carbon monoxide and hydrogen fluoride, making them a hazard to anyone in the vicinity.

Lithium-ion battery fires can produce their own oxygen during thermal

runaway, smothering the fire isn't likely to put it out. Even water might not be effective enough to stop it from spreading.

Be aware of fire exits when you store e-bikes and e-scooters indoors. Many families with electronic bikes and scooters will store them inside, along hallways or in garages, which can be very dangerous. If one of these combusts, it could block emergency exits or ignite other flammable materials around it.

Wherever you choose to store these items, be aware of the risks and make sure your whole family know the best ways to exit the home in the event of an emergency.

Improper storage and disposal of electronics are a common cause of fires. Electronics that use lithium-ion batteries should always be stored in a cool, dry place, away from direct sunlight and flammable materials.

Do not leave laptops or phones to charge for long periods and look out for warning signs of a failing battery, which includes, bulging swelling, and being hot to the touch.

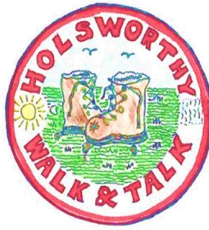
Do not throw devices with lithium-ion batteries in the rubbish or recycling bins. If crushed or damaged, these batteries can ignite and cause dangerous fires.

Dispose batteries and rechargeable electronics at household waste recycling centres.

**For help and advice telephone
Brian Meadows on 01288 381061,
Nofix-Nofee Computer Repair
Services.**

Holsworthy Walk & Talk Group

By Gill Aston



Why not scan
our QR code?
This will take you
to our website.



We had some rather warm walks last month, particularly a couple of Friday walks. Fortunately, both Level 2 and Level 3 groups started from Halwill Junction on the hottest day and headed towards Cookworthy Forest where there was some very welcome shade. **Our photo (right), shows the Level 2 walkers heading back towards Halwill Village Hall via Chilla Chapel with the fishing lakes shimmering in the sunshine behind them.**



Our Level 2 walk at Roadford Lake again took us around the forestry tracks but we were perplexed to notice orange arrows and crosses which had been painted on the ground along the route. A local walker enlightened us as to their presence; they were way markers for a military triathlon event which had been held along that route the day before. Thank goodness we didn't get entangled with them!

All five of our Walk Leader Trainees have now completed their training. Congratulations to Jan on her completion.

Our Level 3 Meldon Walk took us near to David Arney's memorial bench which overlooks the dam. It was particularly fitting to stop for a few moments on this our 20th Anniversary



Year to remember David's foresight and commitment to Walking for Health, as the initiative was known, when he and Michael Heryet from the Bude Group set up the walks. The bench was installed in the autumn of 2019, being purchased as a collaboration between ourselves, Okehampton Walk and Talk and West Devon Walkers which were the three main Groups that David was involved with. David had a particular connection with the Dam as he used to run up and **continued on page 41**

Holsworthy Walk & Talk group report continued from page 40....

down the steps as part of his fitness training in preparation for a walk from John O'Groats to Land's End during which he raised funds in aid of 'Force Cancer Research' who are based in Exeter. He was a very fit chap!

Our new programme of walks is now available taking us up to October. All walks start at 10.30 am and are **FREE**. Membership forms are available from our Volunteer Walk Leaders prior to the start of the walk.

Our August Programme of walks:



Level 2 & 3 walks are every Friday at 10.30am. All these walks aim to be completed in about 90 minutes.



AUGUST Walks: Walk starting points as indicated below:

Friday 1st August – Level 2: LOWER TAMAR LAKE. Start from Lower Tamar free car park. Quiet lanes, footpaths and gentle inclines. **LEADERS:** Michael Heryet & Richard Cook. EX22 7LB.

Level 3: - HIGHAMPTON. Start from Windmilland Cross on A3072 between Brandis Corner and Highampton. Lanes, tracks and fields with inclines. **LEADERS.** Eric Boundy & Kim Harris. EX21 5JH.

Friday 8th August - Level 2: CLAWTON. Start from Parish Hall car park. On and off road paths with gentle inclines, no stiles. Can be muddy in parts. **LEADERS:** Jacqui Shapland & Mike Jackson. EX22 6PS.

Level 3: - SHEEPWASH. Start from Village Square. Lanes, tracks and fields, can be muddy. **LEADERS:** Jan Hayward & Paul Davies. EX21 5NE.

AUGUST Walks Programme continued:

Friday 15th August - Level 2: KILKHAMPTON.

Start from football club car park. Lanes and hard tracks. Some inclines but no stiles.

LEADERS: Cheryl Collins & Richard Cook. EX23 9QU.

Level 3: - KILKHAMPTON. Start from football club car park. Lanes tracks and fields. Some steep inclines and stiles.

LEADERS: Michael Heryet & Paul Davies. EX23 9QU.

Friday 22nd August - Level 2: DUNSDON

NATURE RESERVE: Start from reserve car park. Level walk on canal bank and quiet lanes. No stiles. **LEADERS:** Mike Jackson & Barbara Bishop. EX22 7JW.

Level 3: - WITHERDON WOODS: Start from 200m inside main entrance on the Halwill to Roadford Lake Rd. Hard tracks with inclines.

LEADERS: Paul Davies & Sue Sturmeay. EX21 5TU.

Friday 29th August – Level 2: BRADWORTHY:

Start from The Square. Mix of quiet roads and footpaths which can be muddy.

LEADERS: Paul Davies & John Weighell. EX22 7TD.

Level 3: - MILTON DAMEREL: Start from Parish Hall car park. Mix of lanes, tracks and fields. Some inclines can be muddy in parts.

LEADERS: Eric Boundy & Richard Cook. EX22 7NZ.

Holsworthy Walk & Talk Group contact details:

Our website has lots of up-to-date information, together with our current programme of walks, details below:

holsworthywalkandtalk@gmail.com
<http://holsworthywalkandtalk.co.uk>

Phone numbers:

**Gillian Aston 07854677784 or
Mike Jackson 01409 261196 or
Paul Davies 07731 626594.**



DENISE WELLINGTON

FUNERAL SERVICES

COMPASSIONATE, CARING,
TRUSTED & PROFESSIONAL

Memorials | Pre-Paid Funeral Plans

24 Hour Contact 01288 359277



Dementia
Friends
An Alzheimer's Society Initiative

Golden Charter 
Smart Planning for Later Life

denisewellingtonfunerals.co.uk
enquiries@denisewellingtonfunerals.co.uk

DB

WALLING



Cornish Stone
Wall Specialists

- Dry stone wall repairs
- Retaining dry stone walls
- Stone work with mortared joints
- Earth stone hedging
- Landscaping
- General construction & ground works
- Garden features

FREE QUOTES

Call Dan on

07968 996191



www.dbwalling.co.uk

WALLING | LANDSCAPING | CONSTRUCTION

John Sanders Park Trust

Save the Date

**Saturday 13th
September**

**A family fun-filled event in
Pyworthy Park to Celebrate
its 100-year anniversary.**

Traditional Sports Day, BBQ, Rounders etc.

**Anyone who would be willing to volunteer to
help on the day or before please contact:**

**Rob Moores 01409 254192 or
Jane Oliver on 07500 834620.**

**The second draw was made after our recent meeting on 1st July 2025,
and the winners were:**

WINNERS of the 2nd Park Draw of 2025 are:

1st Prize of £30 no. 67 James Mansell

2nd Prize of £20 no. 43 Lizzy Proudfoot

3rd Prize of £10 no. 100 Caroline Hughes.

*There are eight further draws to be made throughout the rest of 2025. If
you have not yet bought a lottery ticket, they are still available at £10 a
ticket. Please contact **Jane Oliver on 07500 834620**, if you would like to
buy one.*

All proceeds after the prizes goes towards the upkeep of the Park.



**Pyworthy
Village Hall
presents:**

**THE MAKING OF
WAR HORSE**

**Friday 3rd October at
Pyworthy Village Hall.**

7.00pm for 7.30pm

Entry £5 per person.

Light refreshments will be available.

Tickets can be booked by telephoning Marie on:
01409 254924 or can also be purchased on the night.

**THE MAKING OF WAR HORSE AND OTHER FILMS
ON DARTMOOR**

Dive into the magic of filmmaking on Dartmoor with our next
speaker Paul Rendell.

Discover behind-the-scenes secrets from the making of War Horse (2010) and
other iconic productions like Down to Earth, Gold Digger, and Revolution (1985).

Our speaker, Paul Rendell (aka 'Dartmoor Paul'), will share his unique
experiences, including his role as an extra in Revolution.

All proceeds in aid of Pyworthy Village Hall.

Useful Local Contacts Your Local Business & Services Directory

**Advertise in the Contacts
list for just £15 per year!**

Animal Behaviourist Spirit Paws, 07851291081
Catering, Food & Drink Supplies Harold Trading Ltd, 01288 381337
Chimney Sweep..... Humphrey Pullar 01409 240138/07984406290
Coarse Fishing Yeomadon Coarse Fishing 01409 253378
Computer Repairs Nofix – Nofee Repair Service, Brian 07534804101
Decorating & Property Maintenance Julian Lapham 07765626069
Driving Tuition Evelyn Sharman 01409 259848/07885352082
Double Glazing M.A.G. Double Glazing Repairs 07969 234161
Electrical Contractors..... Algo Electrical Contractors01409 254595
Electrical Contractor Mike Daniel 01288 381342/07977 596772
Estate Agents Kivells 01409 253888
Fruit, Veg, Flowers & more Trigon Farm, Derriton – Al, 07988484069
Funeral Directors Arthur W. Bryant Funeral Service 01409 253000
Funeral Services Denise Wellington Funeral Services 01288 359277
Foot Care Kate Lord: 07557379099 Email: katescompletefeet1@gmail.com
Fencing/Garden structures..... WWW.RUBY-GROUP.CO.UK
General Builder James Mansell - General Builder 07896945889
Gun Club West Devon Air Gun Club, Nigel Palmer, 01409 254133
Grass cutting & garden maintenance Antony Jarvis, 07990016467
Heating Engineer Greg 01409 478198
British Hedgehog Preservation Society.....Bob Gelder, 01409-253791
Herbalist Diana Lee, Registered Medical Herbalist 01409 254450
Holiday Accommodation ... 01288 381272 email: jay@glebehousecottages.co.uk
Holsworthy NHS Dental Care 01409 255525
Holsworthy Golf Club.....01409 253177
Holsworthy Library 01409 253514
Holsworthy Medical Centre 01409 253692 **District nurses** 01409 255134
Holsworthy Post office & Sorting Office 01409 253608/01409 253236
Holsworthy Rural Community Transport team ... 01409 259001
Holsworthy Walk & Talk Group ... Gill Aston 07854677784
John Sanders Park Trust Martin Brennan 01409 691096
Line Dancing Group Brenda Martin 01409 253015
MOT & Garage Services ... Pyworthy MOT Ltd, Simon Martin 01409 254275
National Grid (report a problem line) National Grid is on 0800 032 0311
Oil Fired boilers & tanks/service & installations Greg 01409 478198
Police Non-urgent phone calls 101/email devon-cornwall.police.uk
Pyworthy Village Hall Bookings: Marie Heard 01409 254924
Organic Farm, Trigon Farm selling fruit & veg etc phone Al on 07988484069
Renewable Energy/replacement windows Renew SW Ltd, 01409 253533
Round Baling Stan Hopper 01409 253412
Stove Supplier CBL Stoves, call Carl on 01288381852 www.cblstoves.co.uk
Therapeutic Treatments CN Holistics 01288 381201
Torridge District Council www.torridge.gov.uk 01237 428700
Walling & landscaping services Call Dan on 07968996191 for a quote.

Algo Electrical



Domestic ~ Industrial ~ Commercial

Electrical Installation; fault diagnosis; consultation & advice, including renewable energy, alarm and security camera systems.

Telephone 01409 25 45 95

www.algo-sales.co.uk

Nofix-Nofee

Low Cost Computer Repair Services

We come to you!

- * Home or Office - No Call Out Fee
- * Email & Broadband Repair
- * Virus Infection Resolve
- * System Restore
- * New System Installation
- * Refurbished Laptops & PC's
- * Free Telephone Help & Advice
- * Hourly Rate and Fixed Fee
- * Onsite Fix & Repairs

Computer
Repairs
from only
£25



Tel: 01288 381061

Mobile: 07534 804101

Email: mail@nofix-nofee.net

Laptops for Schoolwork



Refurbished laptops that have been donated by generous customers, may be available to a child in need, for schoolwork.

**Contact Brian Meadows:
Tel: 01288 381061.**

**Read Brian's article on
page 37.**

Save Your Used Stamps for the Hedgehogs!



British Hedgehog Preservation Society

Macmillan no longer sells used stamps, but Bob has found another very worthwhile charity, who can make use of our stamps.

Please Save your used Postage Stamps!

Used National & International stamps can be recycled.

They will be used to generate income for the

British Hedgehog Preservation Society.

Simply pop stamps into an envelope and drop off at:

**9 Shortlands, Pyworthy or
Sunnymead, Pyworthy.**

Thank you!



Humphrey Pullar Chimney Sweep

NACS Registered

- Professional Chimney Sweeping Service
- Full Brush & Vacuum Service
- Pots, Cowls & Bird guards Fitted.

All types of Appliances & Flues Swept & Serviced.

Traditional & Power sweeping Techniques

Chimney CCTV Surveys/Bird Nests Removed.



24 Hours Emergency Service

Call: 01409 240138 or

07984 406290



Local Stove Supplier

CBL STOVES

The Showroom, Unit 5
Red Post, Bude, Cornwall
EX23 9NW

01288 381852
carl@cblstoves.co.uk
www.cblstoves.co.uk



- Stainless Steel twinwall flues
- Chimney Lining
- Iskoern Pumice lining
- Fireplace alterations
- Stove Installations
- Wood, Multifuel, Gas & Electric Traditional & Contemporary Stoves & Fires
- Chimney Rebuilds
- Slate, Granite & Glass Hearths
- Wood & Ceramic beams & surrounds
- Floating Shelves



Showroom Opening Hours:
Monday to Friday 9am until 4pm
Saturday 9am until 2pm

Call us now for a FREE no
obligation quote on:
01288 381 852

Website: www.cblstoves.co.uk
Email: carl@cblstoves.co.uk

PYWORTHY PARISH COUNCIL

Here are the contact telephone numbers for our Parish Councillors:

Ros Skinner: Chair

01409 254159 or 07800667842

Andrew Parrish: Vice Chair

01409 254303

Nick Lock:

01288 381529 or 07989595372

Rob Moores: 01409 254192

Angela Skinner: 07794 344117

Martin Brennan: 01409 691096

Andrew Beaven: 01409 253509
(after 7pm).

For general enquires phone:

Simon Davies, Clerk on:

tel. 07989747416.

Email address:

pyworthy@yahoo.co.uk

The date of the next meeting will
be Thursday 18th SEPTEMBER at
7.30pm.

AUGUST ANNIVERSARIES:

60th Anniversary, 1st August 1965 - the advertising of cigarettes on British television was banned. TV advertisements for cigars and loose tobacco were allowed until 1991.

80th Anniversary, 12th August 1945 – the Soviet Union occupied North Korea and established a communist government.

80th Anniversary, 15th August 1945 - VJ Day (Victory over Japan Day).

80th Anniversary, 17th August 1945
George Orwell's satirical Novella *Animal Farm* was published.

Clawton Primary School Opens Play Field & Vegetable Garden in the School Summer Holidays

Visit the School outdoor area to 'kick a ball around', play in the willow dome, slide or the slide, or join our team of garden volunteers who will be tending the garden in the summer holidays.

Hot and cold drinks will be served in our outdoor classroom, or you are welcome to bring a picnic.

**Open on Wednesdays:
August 13th, 20th and 27th –
2:00pm - 4:30pm.**



Parking is available at the school gate. Look for signs to walk from the car park to the field gate entrance on Beer Mill Road.

**AUGUST
2025**



Nature Notes

By Bryony Rylett

This year a sunny, dry Spring gave way to a hot Summer that, in turn, is now giving way to an early Autumn with blackberries already ripening in the hedges, fields and gardens of Pyworthy.

Brambles (*Rubus fruticosus*) were bearing green and red berries in July so it is likely that by now birds, humans and other mammals are enjoying a fruitful harvest.

Blackberries are considered to be the tastiest of wild fruits and blackberry season is an opportunity to forage for free, finger-staining fruit eaten raw or cooked in jams, jellies, crumbles and pies.

Bramble fruit, known as a “friend of the poor” or “traveller's friend”, is high in Vitamin C and antioxidants. Young shoots can be eaten like asparagus and the new leaves can be used in salads.

In his 1966 poem ‘Picking Blackberries’, Irish poet Seamus Heaney used rotting blackberries as a metaphor for childhood innocence and joy giving way to adult resignation at life's disappointments.

“Once off the bush, the fruit fermented

fermented, the sweet flesh would turn sour. I always felt like crying. It wasn't fair”.

Unlike Heaney many have happy experiences of blackberry picking even if “hands were peppered with thorn pricks, our palms sticky as Bluebeard's”.

During the American Civil War soldiers drank blackberry tea to cure dysentery and ceasefires were called for the purpose of picking blackberries with accounts of Confederate and Union soldiers picking from the same bushes, before resuming hostilities.

Brambles are found on every continent excluding Antarctica. The UK has 300 native bramble species and there are over 2,000 known varieties or micro-species. The *fruticosus* part of the plant's name comes from the Latin ‘*frutex*’ meaning bush

Bramble species remain extremely localised with fruit and seeds being produced without fertilisation in a reproductive process known as apomixis. Blackberry seeds are often dispersed in mammal and bird faeces. Brambles also spread by tip layering whereby the rambling stems send roots into the ground.

The thick, thorny, arching stems of bramble grow vigorously, up to three metres, forming dense bushes of ovate leaves, dark green on top, pale underneath. The pink or white, saucer-shaped flowers, some 2-3cms across, bear five petals and many stamens that attract a variety of pollinators from late spring to early summer.

See Bryony's photo of a Hoverfly on page 51.

Nature Note – AUGUST continued from page 50.....



Above: A Hoverfly, Bumble Bee mimic, *Volucella Bombylans*, feeding on bramble nectar.

Blackberries are not actually berries; they are an aggregate fruit made up of 'drupelets'.

Bramble thickets create safe shelter for small mammals and many bird species that nest in them.

It is an offence under the Wildlife and Countryside Act 1981 to damage or destroy the nest of a wild bird while it is in use or being built. This runs from March to August, but birds don't observe contrivances such as dividing the year into months so often nest outside this period.

Brambles are home to the Parent Bug, of the Shield Bug family, one of few insects to look after its young. If Brambles are home to the Parent Bug, of the Shield Bug family, one of few

insects to look after its young. If danger threatens, the mother bug will herd her 'buglets' under leaves, bravely staying on top as a decoy for predators.

Forensic Scientist, Dr Mark Spencer, uses his knowledge of the distinctive growth pattern of brambles to help establish how long human remains have been at a crime scene. (BBC Radio 4 - Natural Histories).

The Celts believed brambles were a deity with the berries changing colour from white to red to black representing three ages of a goddess: maiden, mother and crone.



Above: Green and red Blackberry 'drupelets'.

In Flora Britannica naturalist Richard Mabey said the long, arched stems of brambles were known, in Norfolk, as 'lawyers' due to the trouble escaping them if you

Continued on page 52

Nature Note – AUGUST continued from page 51.....

fell into their clutches while at the Norfolk Wildlife Trust's Honeypot Wood Reserve, Dereham, a bramble has earned the nickname 'Boadicea' due to its particularly vigorous and vicious growth.

In the past graves were sometimes planted with brambles to fulfil the dual purpose of keeping sheep away and the dead entombed.

Possibly the most well-known blackberry folktale is the one that warns of the folly of eating blackberries after Michaelmas Day, September 29.

When the archangel Michael cast the devil out of heaven Lucifer landed on a bramble bush and either cursed it, spat or urinated on it depending on the version.

Flesh flies enjoy blackberries at the end of the fruiting season, when berries become mushy and insipid; they dribble saliva on them to help suck on the flesh.



Above: A young, female House Sparrow

Blackberries form a part of the varied diet of the **House Sparrow** (*Passer domesticus*); a species, like bramble, found on every continent apart from Antarctica.

Now declared a Red List Species by the Birds of Conservation Concern Partnership (BoCC) House Sparrow numbers have declined by 60% in the last 30 years.

While the exact reason for the decline is not known factors that have played a part include: climate change, habitat loss, agricultural intensification, reduction in food due to pesticide use, general insect decline, predation by cats, increased levels of disease, Autumn sown cereal crops leaving little stubble for forage, modern buildings having fewer holes and crevices for nesting and unleaded petrol affecting insect abundance.

With odds like this stacked against the species it is a wonder there are any House Sparrows left. On the plus side sparrow numbers can be supported by providing sunflower seeds in feeders, letting lawns and gardens go wild, allowing brambles to grow and installing nest boxes.

Sexual dimorphism means the plumage of male and female sparrows differs. Males have a light grey crown, a red-brown back, grey underside and rump and a black bib.

Bib size varies depending on the age and dominance of the individual.

Females have a yellow-brown cap, a pale stripe behind the eye and a dull, brown back.

Sparrows measure 14-15 cm in length, have a wingspan of 21-25 cm and a lifespan of three years. They feed mainly on seeds, berries, buds, insects and scraps

Continued on page 53

Nature Note – AUGUST continued from page 52.....

from human meals and are often seen hopping along the ground foraging or taking dust baths, believed to help absorb excessive preening oil and remove dry skin and lice.

Highly social, living in noisy flocks, sparrows make untidy nests of grass and feathers under eaves, in wall cavities and in nest boxes or occupy old House Martin nests.

They produce two or three broods consisting of four to five eggs, laid from March to July and incubated over 14 days.

Seeing sparrows has different meanings in different cultures. They can either be symbols of hope or harbingers of doom. European folklore says a sparrow entering a house, a house, including an attic, is considered a bad omen, specifically a sign of an impending death.

In Chinese culture they indicate good fortune, happiness and resilience while in Japan they represent trust and caring.

Sparrows are a metaphor in literature and poetry for a variety of human conditions.



Above: A Parent Bug pictured above (referred to on page 51), which was spotted on a Hogweed plant, recently. Credit goes to Kailash Kay for the photo.

**The answer to July's Nature Notes
Question:**

Stag at Bay.

This month's question:

**Which singer was nicknamed The
Little Sparrow.**

**The answer will be in September's
edition of Nature Notes.**



 **CRIMESTOPPERS**
0800 555 111
Call anonymously with information about crime

ActionFraud
Report Fraud & Internet Crime
0300 123 2040



Print deadline for the next edition of Pyworthy Post is:
Monday 25th August 2025 at 9am prompt!

(Dates & events were correct at the time of printing)

Diary dates this month:

Holsworthy Walk & Talk group enjoy a walk every Friday, see their programme on pages 40 & 41. Also, members take a short walk in Stanhope Park on Mondays.

Friday 8th August – “Play your Cards Right” social evening at the Village Hall.

Saturday 9th August – Cream tea at Hollacombe Church, afternoon.

Sunday 10th August – North Devon Hospice event “Floating Bye” on Instow beach at 6.30pm.

Wednesday 13th August – Coffee morning **in aid of Pyworthy Village Hall**, at The Memorial Hall, Holsworthy - between 9am & 12 noon. See page 5 for details.

Wednesday 13th August – Meet the Police & have your say, 9am in Holsworthy Market.

Wednesdays 13th, 20th & 27th August – Clawton Primary School opens its play field and gardens, afternoons. All welcome. See page 49 for more information.

Thursday 14th August – Okehampton Show.

Sunday 17th August – Tomato Feast at Trigon Farm, Pyworthy, see page 36.

Friday 22nd August – Social Evening at the Village Hall, doors open at 7.00pm

Monday 25th August – **Bank Holiday Monday**, Pyworthy Post goes off to print

Thursday 28th August – Holsworthy & Stratton Agricultural show.

Forthcoming Events:

Saturday 6th September – **Pyworthy Annual Village Show, more details on page 28. Programmes now on sale.**

Saturday 13th September – Pyworthy Park celebrations – it's 100 years old!

Thursday 18th September – Pyworthy Parish Council meeting, 7.30pm in Village Hall.

Wednesday 24th September – Village Hall meeting at 7.30pm in the Hall.

Friday 3rd October – talk on the making of The War Horse film in Village Hall.

Saturday 1st November – “Not the Cowboys” band appearing at the Village Hall.

Friday 19th December – “Joy Machine” entertain in the



**Please keep
Pyworthy
litter free!**



RUBY

WWW.RUBY-GROUP.CO.UK

CLADDING | GATES | PLANTERS |
FENCING | PERGOLAS & MORE

BUILD YOUR
BESPOKE
DREAM GARDEN



SCAN ME



CLADDING

01409 231 763

GATES

WHY RUBY?

- ✓ MANUFACTURED IN HIGHAMPTON
- ✓ BESPOKE BUILD AVAILABLE
- ✓ FAST DELIVERY
- ✓ MADE TO MEASURE

FENCING

PLANTERS

PERGOLAS

Your Local
Team

KIVELLS

www.kivells.com



Kivells have served Holsworthy, the surrounding area and its community since 1885 and we are passionate about property. We know our local areas intimately and our dedicated staff strive to offer the best customer service in the industry.



Holsworthy

Kivells Property Suite
Market Square, New Market Road
Holsworthy, Devon
EX22 7FA
01409 253888
holsworthy@kivells.com



Jack Alford
Valuer



Mark Kivell
Office Manager



Daniel Stokes
MNAEA
Director



William Branton
Sales Negotiator



Enya Garrett
Property Secretary

