

PYWORTHY POST



Happy Easter Pyworthy!



Above: Mike Godfrey's Spring Daffodils

What's in your paper this month?

Ripple Energy have gone into Administration!

Our Village Hall celebrates 40th Anniversary. Events are planned to mark the occasion this month.

And much, much more
turn the page and come inside.



Read online at:
<https://pyworthy-parish.co.uk/>
and view the paper in full colour.

April 2025
Issue number 338

WHO'S CELEBRATING THIS MONTH?



BIRTHDAYS

APRIL

- 1st Susanne Kiff
- 4th Madge Evans, Jocelyn Symons & Reuben Hopper
- 5th John McDougall
- 6th Martyn Lawrence, Sarah Burnard
- 7th Charlie Meredith
- 15th Steven Hackett
- 17th John Burnard, Andrew Parsons, Claudia Curnow
- 18th Andrew Parrish, Michael Steyn
- 19th Thomas Lees
- 20th Chloe Foote, Rob Francis
- 21st Irene Sharp
- 22nd Kieran Hopper
- 23rd Bronte Littlejohns
- 24th Kirsty Godfrey
- 26th Liffy Lowes, Avril Glessing, Ben Chandler-Galt, Audrey Davis
- 27th Nick Lock
- 28th Jack Foote, Helen Daniel, Paula Lawman
- 29th Emma Durant & Jules Hill
- 30th Monica Gelder, Chris Samuels

SPECIAL BIRTHDAYS AND FAMILY OCCASIONS

Community Birthday list

New Residents of Pyworthy Parish, please feel welcome to add your birthdays to our community list.



Pyworthy Village Hall will be celebrating its 40th Anniversary on the 12th April 2025.

Welcome to the APRIL Edition

By Marion Ravn



Happy Easter Everybody!

It's Easter already, and summer is on the way!

I hope the ladies of Pyworthy enjoyed Mother's Day and got showered with gifts and spoilt rotten. Mums are very special people and deserve a special day of appreciation.

On a more serious note, I have just received two articles concerning our new solar park, which may interest you. It seems that Ripple Energy have gone into Administration. Read more on pages 24 & 25.

What have we in store for April? Our Village Hall is celebrating its 40th Anniversary on the 12th of April. To commemorate the occasion there will be a Bring and Share tea party during the afternoon of the 12th, and Live music in the evening. Full details can be found on pages 29 and 30. Our Church has a Children's Craft session on the 13th and an Easter Egg Hunt on the 20th.

That's all from me this month, enjoy your Easter.

The Pyworthy Post will only be uploaded onto the new Pyworthy website from now on. The address is on the front cover. If however, you'd like me to send you a link each month, please send me your email address to enable me to add you to the community list.

Keep the news and articles coming in. Email: pyworthy@post.com



Page Index:

2. April Birthdays
3. Editors welcome & page Index
4. Holsworthy Library – what's on in April
5. Church service information
- 6/9. Village Hall news, events & clubs
- 10/11. My Electrical Industry Recollections by Mike Godfrey
12. Sponsor's page & Hedgehog Thanks
13. Holsworthy History Society programme
14. March Poser Quiz answers & Line Dancing Clubs info.
15. Evelyn's Walks group report
- 16/17. Pyworthy People
17. Thank you message from Holsworthy Food Bank & **Church Spring Cleaning**
18. Men's Skittles Team & sponsor's page
- 19/21. Gardening with Mike Godfrey
22. Ripple update
- 23/25. Pyworthy Solar – must read articles & April anniversaries
26. St. Swithun's Church News
27. Sponsor's page
28. Church events poster
- 29/30. 40th Anniversary events at our Village Hall this month.
30. Cyber Security for farm owners
31. Sponsor's page
32. Easyfundraising for the Village Hall/Church booking contact numbers
33. **T.D.C. BIN collection dates**
34. Poetry Corner
- 35/36. Sponsor's pages & useful contact numbers
37. April Poser Quiz & sponsor's ad
38. Slimming World & sunset & sunrises times
39. Computer News
- 40/41. Holsworthy Walk & Talk group report & programme of walks
42. Pyworthy Parish Council contact details & last meeting summary
43. The John Sanders Park Trust Draw 2025
44. Village Show Photographic category, classes this year & **FREEBIES**
45. Local Business contacts list
46. Sponsor's page
47. Save your stamps for Hedgehogs & Rural Transport Service
48. Sponsor's page
49. Charity event in June
- 50/53. April Nature Notes series
54. Dates for your Diary
- 55/56. Sponsors page



WHAT'S ON AT HOLSWORTHY LIBRARY - APRIL 2025

- Permaculture Talk with Trigon Farm, Wednesday 2nd - 7pm. Free but booking essential.
- Bounce & Rhyme, Thursday 3rd & 24th (term time only) - 2:15pm - 2:45pm
- Digital Workshop with Learn Devon: Using Apps, Friday 4th - 10am-12pm. Free but booking essential.
- Clothes Upcycling Workshop, Saturday 5th - 2pm-4pm. Booking essential £5
- Cosy Poetry Discussion Evening, Monday 7th - 7pm. Free but booking essential.
- Lego Challenge Day, Wednesday 9th - 11am-4pm (drop in session)
- Board Games and Biscuits, Thursday 10th & 17th - 11am-4pm (drop in sessions)
- Lloyds Bank Community Banking session, Monday 14th & 28th - 2pm-4pm
- Egg box sow & grow activity for children, Wednesday 16th - 11am-4pm (drop in session)
- *Creative Workshop with the Resource Centre, Embellished Felt Brooches, 1st May - 10:00am-12:00pm, booking essential, £2*
- Lego and games for children. Every Saturday - 10am-12pm



Library News!

Holsworthy Library - There are lots of exciting things happening at your local library. In addition to a great range of books you can use your library membership to access free eBooks and audiobooks via the Borrowbox app. We also have free public computers and Wi-Fi as well as printing, copying and scanning facilities. It is free to join the library, and we are a friendly, welcoming space open to all. Free hot drinks are available, and people are encouraged to use the library as a place to relax, work and socialise as well as to find their next great read!

Opening Hours:

Monday 2pm-5pm

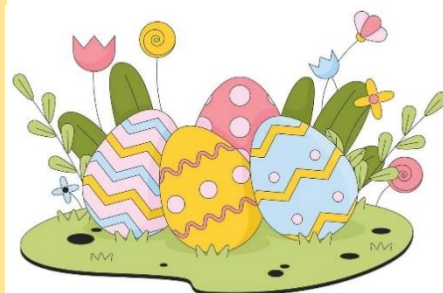
Tuesday Closed

Wednesday 10am-6pm

Thursday 10am-5pm

Friday 10am-1pm (additional hours until 25th April 2025)

Saturday 10am-1pm - Sundays Closed.



United Benefice of Holsworthy

Rector: Revd Alison Hardy, Churchwarden: Alison Davies & Liffy Lowes



Benefice Services for APRIL

<http://www.holsworthybenefice.org.uk/services/benefice-calendar/>

Worship and Prayer in the Holsworthy Benefice – APRIL 2025

Date	Bridgerule	Holsworthy	Pyworthy	Hollacombe
Sunday 6 th April	11.00am Sung Eucharist	9.30am Sung Eucharist	9.30am Family Service	9.30am Mass
Sunday 13 th April	11.00am Morning Prayer	11.00am Sung Eucharist	9.30am Sung Eucharist	3.00pm Evensong
Wednesday 16 th April		10.00am BCP Holy Communion		
Thursday 17 th April Maundy Thursday	-	7.00pm Eucharist 9.00pm Compline		7.30pm Mass & The Watch
Friday 18 th April Good Friday		10.00am in the Square, Walk of the Witness	2.00pm Last hour	2.00pm Veneration
Saturday 19 th April, Easter Eve		8.00pm Easter Vigil		7.30pm Easter Vigil
Sunday 20 th April Easter Sunday	11.00am First Eucharist of Easter	9.20am First Eucharist of Easter	3.00pm First Eucharist of Easter & Easter Egg Hunt	9.30am First Mass of Easter
Sunday 27 th April	11.00am Sung Eucharist	11.00am 		9.30am Morning Prayer
9.30am – All Age service at Pancrasweek				

Pyworthy Village Hall News


Martin Brennan, Chairman

40th Anniversary Celebrations

We are very much looking forward to welcoming you all and joining with us in Celebrating 'The Hall's 40th Birthday Celebrations'

The day starts with a **Bring & Share Tea from 2pm till 4pm** in the Main Hall.

Loads of old Photos, Village Memorabilia, past and present, will be on display in the Skittle Alley.

 Perhaps you may have some that you would like to share with us. Either way we would love to see as many of you as possible on **Saturday 12th April.**

Our Celebrations carry on into the evening where: -

We are Proud to Present 'The Club Classics Band' playing music that you have all danced too down through the Years. Classics from the 70s to the present day. So why not come along and relive those '**Magic Moments**'



There are still some tickets available so don't delay!! See Page 29 for further details.

Potters Fish n Things
Tuesday 15th April 2025,
4.30pm-7.00pm

Our Next Meeting is the AGM on
Wednesday 23rd April 2025.
The meeting will start at 7.30pm.
All Welcome.

Our AGM this year will be held on **Wednesday 23rd April @7.30pm**

As you are all aware the Hall plays a very important and integral part of Village life here in Pyworthy. We are always looking for new ideas and especially **New Members** so that we can carry on and improve upon what we have got and that is a vibrant **Village Hall**. So, it would be lovely to see as many of you as possible attend.

The AGM is also an opportunity for you to elect members to represent the Hall throughout the coming year.

Nominations are therefore invited for the following positions: -

Chairman, Secretary, Treasurer.

Please forward all nominations to Janet Grant via email: -

artyjan43@gmail.com

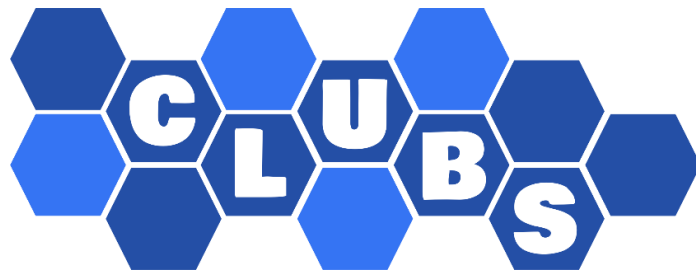
by Monday 21st April 2025

Or complete the **nomination form on page 8** and drop it through the Village Hall letterbox by no later than Monday 21st April 2025.

Thank you all, for my **Surprise Welcome Back** get together. It was a lovely way to celebrate St Patrick's Day with friends. An evening to remember! Much Appreciated!

'Go Raibh Mile Maith Agat'





Village Hall Pub Nights!



Next month our Social
Evenings are:

**Fridays the 16th &
30th MAY**

We look forward to seeing
you All.

**Doors/Bar Opens
at 7pm until late.**

Everybody is welcome, come
along and have a good time.



Dates for your Diary.

Village Hall Meeting

Our next meeting is the AGM
on Wednesday 23rd April
at 7.30pm.

Please feel welcome to join us.

What's on at the Pyworthy Village Hall.....

Mondays: Line Dancing Club:

Complete Beginners: 5.30pm – 6.30pm

Beginners/Improvers, 6.30pm – 7.30pm

Intermediate, 7.30pm -9.30pm.

Tuesdays: Rural Art Group,
2.30pm – 4.30pm. All abilities
welcome.

Tuesdays: Line Dancing Club,
Intermediate, 7.30pm -9.30pm.

Tuesday evenings: Men's Skittles
Team. Playing at home & away.

Wednesdays: Beginners Ballroom
dancing & Latin class, including
Sequence dancing 7.30pm – 9.00pm.

Thursdays: Gill's Golden Gang,
10.00am – 11.00am.

Thursdays: Coffee Mornings – 1st & 3rd
Thursdays of each month, from
11.10am. Everybody welcome!

Thursdays: Creative Craft Club – 2nd
& 4th Thursdays of each month, from
2.30pm until 4.30pm. **(NEW DAYS)**

**Sundays: Children's Ballroom and
Latin Dance Class** -10.00am until
11.00am.

**Please see club adverts throughout
the paper, for contact details.**

Pyworthy Rural Art Group

Pyworthy ART

For further information contact Janet Grant
Tel: 01409 259356



At last spring is on its way, the Daffodils have been wonderful as we haven't had too many strong winds or rain to spoil them. We managed to do some nice watercolours of them during our spring flower watercolour class recently. We have more good classes coming this month, so why not come and join us?



We meet every Tuesday in the Pyworthy Village Hall at 2.30pm until 4.30pm. All abilities are welcome.

Our programme for Tuesdays in April:

- 1st April Car and Tractors in pictures in watercolour paints
- 8th April Continuing the above with cars and tractors.
- 15th April Boats learning to draw them - stage 1.
- 22nd April Boats drawing them again and painting in Oil paints – stage 2.
- 29th April Boats finishing off the work on boats and a good pencil drawing.

Please bring your own materials, if you have them, and a drink.

The Village Hall Committee Nomination Form can be found below.

Register your nominations with Janet Grant via email: - artyjan43@gmail.com

Or complete the nomination form below and drop it through the Village Hall letterbox by no later than Monday 21st April.

Thank you. Martin Brennan, Chairman.

----- ✂
Pyworthy Village Hall Committee Nomination Form – see page 5.

I nominate: for the position of
Chairman / Treasurer / Secretary.

I nominate: for the position of
Chairman / Treasurer / Secretary.

I nominate: for the position of
Chairman / Treasurer / Secretary.

Signed: Dated:

Please print name:

Address

Email address: pyworthy@post.com Telephone number: 01409 478294 Page 8

Join Gill's Golden Gang

**Strength & Balance Exercise Class
for the over 55's!**

Held at:

**Tuesday: Holsworthy
Scout Hut
10.30am to 11.30am &
12 noon to 1.00pm.**

**Thursdays: Pyworthy
Village Hall
10.00am to 11.00am.**

**Halwill Baptist Chapel
Hall
12.45pm to 1.45pm.**

**Contact Gill Aston on: 07854677784
for more information.**



VILLAGE HALL COFFEE MORNING GROUP

**Come along and join us at
11.10am on the 1st & 3rd
Thursdays of each month.**

**Meet new friends, enjoy a coffee,
and have a good chat.**

**For more information phone:
Brenda on: 01409 253015 or
Marie on: 01409 254924.**

Now held in the main Village Hall.



**NEW MEMBERS ARE
VERY WELCOME!**

My Electricity Industry

Recollections

By Mike Godfrey

What Forms does Electricity Take

Now you have had your science lesson (episode 2), and you are all now fully conversant with what electricity actually is, I thought it would be appropriate to explain what forms electricity can take. I promise I will get round to telling you about my life as an Electrical Engineer in the Electricity Industry "eventually".

As I explained electricity is all about the movement of electrons through materials we call conductors. There are three basic forms of Electricity, Direct Current (DC), Alternating Current (AC) and Static Electricity.

Direct Current

This is basically the flow of electrons in one direction only. This is typically batteries nowadays but early electricity supplies in the Country were mainly DC, many railway systems still use DC at various voltages. Many long distant transmission lines and also all the undersea links between us and Europe and Ireland are also DC. DC has many benefits because it is more controllable (via Inverters) and has fewer losses generally than the equivalent AC circuit. DC cable links also have the advantage that they enable two dissimilar AC networks to be connected together ie, the UK and France. There was even a plan once to divide the UK system into 5 areas linking them with a DC Links, because the demand for electricity was growing so rapidly in the 1950/60s it was becoming difficult to control AC power flows on the high voltage transmission network.



Alternating Current

This is basically the flow of electrons one way and then the other in a conductor which also includes air. For our electricity supply it is 50 cycles (times) per second also called 50Hz, after a chap named Hertz, who was a pioneer in the development in the understanding and use of electricity. At 50Hz, it means that electrons reverse direction every 10 milliseconds and if you have remembered they are doing it whilst travelling at 186,000 miles per second – it is almost unimaginable!!

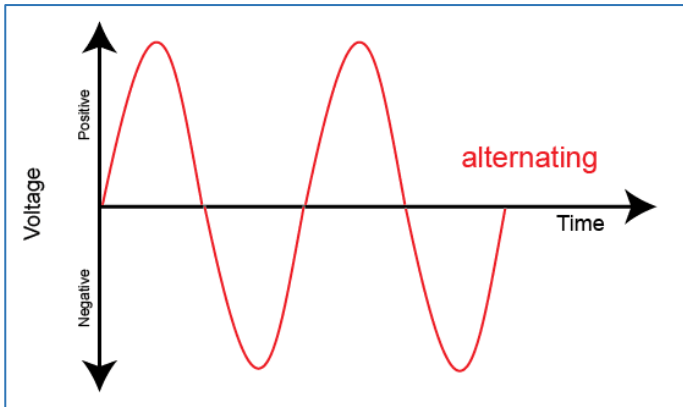
The AC network at 50 cycles per second is regarded as low frequency, other systems use higher frequencies, many aircraft have electrical systems running at 400 cycles per second. Even that is still relatively low frequency; many systems for Radio, TV and communications operate in thousands, millions and thousands of millions of cycles per second with electrons travelling through the air to reach your radio, TV, broadband or other devices. All those electrons are travelling through the air all around us and even through us to provide the information to the receiving device. Even more unimaginable but it all works quite reliably generally.

See page 11 for more about electricity

What Forms does Electricity Take continued

Below: An Example of Alternating Current

An alternating current (AC) waveform refers to a pattern of current or voltage that periodically changes in amplitude and direction over time. This waveform is fundamental to the electricity used in homes and industries, allowing for the efficient transfer and utilization of electrical energy.



Static Electricity

Static electricity is again involving the movement of electrons but basically the transfer of electrons from one material to another. This results in a dearth of electrons in one material causing it to become positively charged and the other material has a surplus of electrons and hence becomes negatively charged. These two dissimilar materials become attracted to one another and hence will stick to one another until most of the electrons have transferred back to their donor material. There many examples of static electricity experiments on the internet one example, rubbing a balloon on a nylon jumper. Benjamin Franklin carried out early experiments by flying a kite with a wet string into clouds and creating a spark to his fingertips, worth a read. Following from that another more dramatic example is sheet or forked lightning.

When clouds build up a static charge between themselves (sheet) or between the clouds and the earth (forked). The lightning we see and hear is the flow of electrons balancing out the charge conditions. The lightning travels at 186,000 miles per second (instantaneously) whereas the sound from the discharge travels at 1100 feet per second. Hence if you count the number of seconds between the flash and hearing the sound will tell you approximately how far the lightning is away from you. A 10 second interval approximately 2 miles away I believe. If there is no time interval between the flash and the sound - oh dear watch out!!

Next time we will progress to how electricity is made and supplied to your house or business.



Above: An Example of how Static Electricity was Discovered and Confirmed

Benjamin Franklin's kite experiment, conducted in 1752, demonstrated that lightning and electricity were the same phenomenon by using a kite with a metal key attached to a wet hemp string to collect static electricity from a thunderstorm, which was then observed as a spark.

The dampened hemp line was attached to a metal key, and further down the line, to a Leyden jar -- the closest thing to a battery to existing in the 1750s. While the kite itself was never struck by lightning, Franklin deduced that it did collect electrical energy from floating around amid an electrical storm.

Happy Easter everybody!



EVELYN SHARMAN

Professional Driving Tuition (DVSA ADI)

Telephone: 01409 259848

Mobile: 07885 352 082

Email: evelyn.sharman@btinternet.com

Thank you!

Hi there Pyworthians!

Delighted to let you all know that Harry & Henrietta made it through the colder months, and we now plan for Spring & Summer to get rid of your slugs and slimy things to help your new plants to grow! But this could not be achieved without your generous donations and support of used stamps which keeps the BHPS alive. Just a small tip: get your family group, neighbours, local friends to simply retain the postage stamps on their mail and parcels, instead of 'binning' them to waste and landfill. Those stamps help us to survive!

Such a simple, cost-free effort. Now, where's that next slug for a decent nosh? By the way, the little hogs are doing fine!

Used stamps to either The Editor at "Sunnymead" or 9. Shortlands. British or Foreign both very welcome. Regards Harry & Henrietta Hedgehog.



Keep saving your used stamps!



Pyworthy MOT Ltd



Typical opening hours depending on school times and holidays.

Monday:	9.00am until 1.00pm
Tuesday:	9.00am until 4.30pm
Wednesday:	7.30am until 4.30pm
Thursday:	7.30am until 4.30pm
Friday:	7.30am until 4.30pm or 7.30am until 1.00pm.

For all your servicing and general repairs, MOTs and MOT work. M.O.T.s can be booked 30 days in advance of expiry, so booking early can catch and give time to repair, unknown faults and problems.

Call Simon - Tel: 01409 254275

Courtesy car available.



Holsworthy History Society

History Society – monthly talks:

Holsworthy History Society meets at 7.00 pm on the second Thursday of the month in the Manor Suite, which is behind the Memorial Hall in Holsworthy. There are talks about local history and talks relating to history further afield. The next few talks are:

- ✻ **10th April – The Royal Navy by Paul Fitzpatrick**
- ✻ **8th May – Holsworthy Court Leet by Richard H Brown.**

**For more information contact:
Julia Warren – 079388 33425 or**

holsworthyhistorysociety@gmail.com

EVERYONE IS WELCOME!

MARCH'S PYWORTHY POSER ANSWERS:

1. England
2. One (1154) Nicholas Breakspear as Adrian IV.
3. Goldcrest or Firecrest.
4. Monopoly (he was an unemployed engineer)
5. Martin Platt (Coronation Street).
6. The Observer (1791).
7. 21.10.1805.
8. 1899.
9. The Imps.
10. Saffron.



The next Poser quiz is on
page 37.
A big thank you to the
Pyworthy Pilgrim.

How did you get on? Why not try the April Poser on page 37.

Pyworthy Pilgrim.

Line Dancing!



New Members welcome.



For more information call Brenda
on: 01409 253015

Line Dancing Classes

Our Line dancing classes are held
on: **Mondays** in

Pyworthy Village Hall.

Complete Beginners:

5.30pm – 6.30pm.

Beginners/Improvers:

6.30pm – 7.30pm &

Intermediate level:

7.30pm – 9.30pm.

Tuesdays: Intermediate level,
7.30pm – 9.30pm.

All classes cost just £5.

Come and join us!



Evelyn's Walks Update

By Evelyn Sharman,
Group Organiser

Happy Easter



*Above: Evelyn's band of happy walkers
enjoying the countryside near
Woodacott Cross.*

On Monday 10th March, nine of us met at Thornbury Holiday Park with kind permission of Lisa, Paul & young Albert. We turned left out of their gate & when we reached Woodacott Cross (I call it Five Ways) we turned left. We were amazed at how wet & muddy this lane was & wondered whether this was an indication that it was going to be too wet to follow the footpath. When we reached Branches Cross, we could have stayed on the lane but we all opted for the footpath which took us across a couple of fields & cut off two sides of the triangle. In reality, it had been wetter on the lane. We turned right along Thorn Lane which enabled us to enjoy far reaching views towards Dartmoor on our right. We spotted a few primroses on the bank & there was some gorse in flower providing some nectar for any bees that were venturing out in the sunshine. When we reached the T-junction, we studied the young Wild Service tree that was planted a few years ago. It seemed to be doing well. We turned right & then followed the footpath immediately on the left. This took us through Meg & Paul's woodland. It's a bit too early for bluebells but there was evidence of Ramsons & we were thrilled to hear a woodpecker. With their kind permission, we took a detour across their field as the next part of the footpath looked very wet & muddy. We headed towards St. Peter's

Church & passed what was the original Village School. The building is looking quite sad now but some of the group brightened the mood by reminiscing about social events that used to take place when it was the Village Hall. The sunshine helped to restore the mood when we emerged from the shade of the trees & there wasn't a breath of wind at Windy Cross. In fact, it was a glorious spring morning & we had all warmed up considerably during our circular walk of approx. 3.75 miles.

Our next walk will be on Monday 14th April. We'll be setting off from the Village Hall in Tetcott, EX22 6QX at 10am. You are welcome to contact me if you would like any more information.

Contact information:
Evelyn Sharman Tel: 01409 259 848
Email:
evelyn.sharman@btinternet.com

In the Spotlight



Our focus this month is
Martin Brennan.
International man of
mystery!

Community Focus



Thanks go to Bryony
Rylett for your research.

Name: Martin Brennan

Age: 74

Occupation: Retired after 30 years in banking and latterly, ten years working in security at Heathrow Airport where I was known as Irish Martin. I used to sing to the passengers to calm their nerves about flying.

Place of Birth: Clare Morris, County Mayo, West Coast of Ireland.

What is the best thing about Pyworthy and why?

The people here. The community support is second to none; long may it continue.

What one thing would you change about Pyworthy and why?

To bring back the school.

Describe yourself in three words:

Reliable, passionate and thoughtful.

How do you like to spend your free time?

Spending time with my grandchildren, walking along the coast around Bude and having a coffee in the cafes. Also, upcycling furniture. (Martin also spends his free time being Chair of the Village Hall Committee, a parish councillor and a trustee of the John Sanders Park Trust).

What one thing have you always wanted to do, try or learn?

Another skydive and to go to Rwanda to see the gorillas in the mist.

If you could meet anyone living or dead, who would it be and why?

After leading many trips to Rome in the 1990s with the Across Trust*¹ on the 25th anniversary of the Trust the VIPs*² and I had a private audience with John Paul II and we shook hands. I would like to meet him again.

(*¹ The Across Trust is a charity created to provide transport and support to enable those with special care needs to go on pilgrimages to Lourdes. The *² VIPs is the name given to those who make the journey).

Continued on page 17....

If you won a million pounds, what would you do with the money?

Look after my family, have a family holiday and give the rest to charity.

If you were granted three wishes, what would they be (extra wishes excluded)?

1. Peace in the world.
2. Good health.
3. Long lasting happiness.

If you had to flee your home at very short notice what three items would you grab?

The car keys, my mobile phone and my mum's photograph; it's the only one I have.

Who will be selected by our roving reporter Bryony for the next Community Focus – could it be you? See next month's Pyworthy Post.

Thank you from Holsworthy Food Bank

A big thank you to everyone who has put donations in the Foodbank box at the back of the Church. In March, I took everything into the Holsworthy Foodbank and it weighed in at 9.4kg.

Well done!

Please keep your donations coming in, food is in great demand these days.



CHURCH SPRING CLEANING

SATURDAY 5TH APRIL

Volunteers are needed to help with the annual spring cleaning of Pyworthy Church. 'Many hands make light work'

If you can help, please come along

Saturday morning – 5th April.

Refreshments are provided.

For more information, please contact

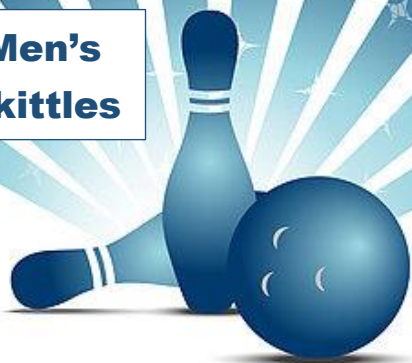
Irene Sharp on:

01409 259326 or email her on:

tremalic1@btinternet.com

Irene looks forward to hearing from you.

Men's Skittles



Men's Skittles!

Pyworthy has a Men's Skittles Team, which meet on Tuesday evenings. If you would be interested in joining them, please contact:

Andrew on 07531186466 or 01409 253509.

Training will be given!

Make a Donation to the Pyworthy Post

If you would like to give a donation towards the printing cost of the Pyworthy Post – see details below.

BACS details:

Account number: 01086227

Sort code: 40-24-25

Account name: Pyworthy Post

Type of account: Community account.

Please email me your name and address for a receipt.

A big thank you to all those who have already donated to the cost of printing the paper, which is appreciated.



Glebe House Cottages, Bridgerule

www.glebehousecottages.co.uk

Telephone: 01288 381272

Accommodation

6 luxury self-catering cottages all recently refurbished to a high standard.

Beautiful 5 acre site with a huge amount of facilities for all ages including:

- ❖ Heated outdoor swimming pool
- ❖ Tennis court
- ❖ Stunning formal gardens
- ❖ Cellar bar & games room
- ❖ Children's play area,
- ❖ Woodland walk
- ❖ Hammock area
- ❖ Croquet
- ❖ Firepit
- ❖ BBQ's plus plenty more.

10% discount for friends & families of local residents.



Party Venue

Why not host your next party at Glebe House Cottage?

We have so many options to make your party stand out. Make it a party you won't forget!

- ❖ We can host parties from 15 guests up to 200.
- ❖ Formal garden parties with a marquee
- ❖ Celebrations in our secret cellar bar
- ❖ Fun tailor-made children's parties!
- ❖ "Have a splash with a pool party!"
- ❖ "Birthday, Anniversaries, Christening or any celebrations!"



GARDENING MATTERS from CRINACOTT

By Mike Godfrey, keen gardener

The first of March arrived and it was like a switch had been operated in my head and I woke up full of enthusiasm for getting going on the gardens, orchard, polytunnels and even the woodlands, although I never really lost my interest in the woodlands right through winter. I particularly like the winter and early springtime in the woodlands, because the undergrowth has all died back and you can walk freely amongst the trees and see many different perspectives that you don't see from the pathways and when the leaves are on the trees. This is enhanced in early spring when the Daffodils, Primroses, Snowdrops and rarer plants such as Snakeshead fritillary all start to flower creating a truly magical vista. My records seem to indicate that March was a lot drier than last year and despite a very wet winter, the ground is a bit drier offering the tempting prospect of starting to work the ground and plant things. 60 odd years of gardening has taught me never to be too hasty at this time of the year, because the ground is still very cold and seeds definitely don't germinate well and have a high tendency to rot. The same is also true for most plug plants best wait until the ground warms up. If you have the luxury of a conservatory, greenhouse, polytunnel or even possibly a cold frame, there is a greater chance of success. With my renewed enthusiasm I spent most of the weekends preparing the ground, sowing vegetable seeds in the ground in the polytunnels or in pots as

appropriate for planting out later.

My wildflower meadow is looking a bit scruffy at the moment as it awakes from its winter slumbers, but I can see signs of life and no doubt another month or two will see it thriving and encouraging the insect life. I also have some very healthy looking wildflower plug plants, which I have brought on from seed during the winter and they will really help to bulk up the wild flowers in my orchard. Last year I really had the intention to improve my existing wildlife ponds and create some new ones, but it all fell by the wayside as I just couldn't find the time. It's no good I will just have to work an extra shift at night. Perhaps I will get to meet all the nocturnal life on the farm. Joking aside I must really find the time to sort out my wildlife ponds and provide the habitat to encourage even more insects, frogs, toads, newts etc. this year.

Unfortunately, the numerous storms have conspired to seriously damage my largest polytunnel and I had to take out a mortgage to buy a new cover. This was the only polytunnel that I didn't modify and strengthen, so I guess I'm to blame. All I've got to do now is wait for a couple of calm days and hope there will be some people to help on the day. There is no doubt that polytunnels provide a brilliant gardening environment, as well as protection against frosts and the winds, to allow plants to get a head start, but always remember to harden off plants before fully exposing them to the outside world.

The best months of the year are now in sight, I just hope the weather behaves itself to really create a truly magical time.

continued on page 20

It is very uplifting to see the spring flowers popping their heads up and providing a colourful and fresh-looking vista.

Jobs for this month, if you haven't already done them:-

- Keep on top of weeds and knock them down with your otherwise they will outgrow and smother your seedlings and plug plants
- Tidy up your borders when they dry out a bit
- Clean pots and trays
- Clean greenhouses, polytunnels and cold frames, make sure that they are well ventilated on warmer days
- There is still time to select and buy your seeds
- Plant onion sets and shallots
- Set seed potatoes in egg containers or similar for chitting
- Clean gutters and drainage gulley's
- Clean pathways and patios of moss and other debris, as these can become very slippery and quite dangerous, particularly if wooden decking is involved
- Prepare your seed beds as the drier weather allows
- Carry out maintenance on your mower as specified by the Manufacturer, including sharpening and adjusting the cutting blade if required.
- If conditions allow aerate lawns and other grassed areas, it might even be possible to mow if the drier weather persists but keep the mower on its highest setting

- Sow salad crop seeds in pots or trays if you have somewhere warm, light and airy to keep them, which is frost free.
- You can also sow vegetable and some flower seeds in pots or divided trays to get a head start. Courgettes, leeks, sweet corn, runner and other beans as well as flowers like sweet peas and other annuals.
- Cover delicate plants with straw or fleece until the risk of frost has disappeared
- Look out for signs of hedgehogs and put out some water and hedgehog or dog food
- If you can leave some dandelions to flower as they provide a good food source for bees and other pollinators this time of the year as there is not much else around.

I have included some spring flower pictures, which I hope will brighten up our day a bit. The Daphne Bholua, which featured in last month's Pyworthy Post has been flowering right through February and is still flowering in March. It provides a most attractive blaze of colour through those dull months but also continually emits the most wonderful fragrance, I can really recommend it for winter colour in the garden.

Mike's beautiful photos can be seen on page 21.

If anyone needs to contact me, then please contact me on 01409 253401 or 07798 647041 or by e-mail at:
mikecrinacott1@gmail.com.



Crinacott Farm in its spring glory.

View online at:

<https://pyworthy-parish.co.uk/>

free of charge, to view the
photos in full colour.



More next month

Coming to the Village Hall on Tuesday 15th April!

REMINDER - Potters Fish 'n' Things

By popular request, Potters have agreed to set up shop in the Village Hall Car Park, 4.30pm-7.00pm every 3rd Tuesday of each month, for the foreseeable future.

**To pre order, head to their
website:**

www.pottersfishnthings.co.uk

**OR alternately just turn up on
the night.**



Other food available



Construction of the Distribution Network Operator (DNO) substation building is now complete. (pictured to the left). The DNO has approved the construction and has identified a few minor improvements that need to be addressed. However, the building is ready for switchgear installation, which is an important milestone in the project.

Learn more about the project here: <https://rippleenergy.com/our-projects/derril-water-solar-park>.

We are pleased to share the latest developments at Derril Water Solar Park. The project is advancing steadily, with both mechanical and electrical work progressing in multiple areas. The installation of ballast foundations continues, and the placement of concrete blocks is nearly complete. Solar panel mounting is now approximately 90% finished.

In terms of electrical work, low-voltage trenching and cable installation between fields 23 and 18 are ongoing, while work on MC4 (being standard cables for solar panels) connections and string cable dressing is progressing in the western area. CCTV base installations and inverter mounting are also underway, and string cables are being connected from the inverters to the medium-voltage stations.

Horizontal Directional Drilling (HDD) activities are also moving forward. HDD works are required in three locations connecting the northern parts of the site to the southern parts. One of those has now completed with ducts installed ready for cables to be pulled through. The next HDD location is well advanced with half of the pilot holes now drilled, once that is complete the contractors will move on to the final HDD location.

Looking ahead to the coming month, we will continue installing CCTV systems and inverters. Additionally, we will begin demobilising the compound and laydown areas to complete the solar panel installation. As we move closer to completing the project, the commissioning of the customer substation, medium voltage stations, and SCADA systems will also begin.

DerrilWater@RippleEnergy.com.

Ripple Energy Ltd going into Administration - the view of the Pyworthy Environmental Group

As we write this on Monday 24th March, Ripple have suddenly appointed insolvency specialists to place their company into administration. The Directors have all resigned and essentially (and unbelievably!) they have run out of cash – presumably there were some greedy hands in the pot. Unless they can find another company to buy them out they will go into liquidation.

The situation is complex as the initial applicant RES sold the project to Ripple who then contracted RES back to build and maintain the project whilst setting up a cooperative management structure (funded largely by well-meaning members of the public on the promise of meagre reductions in their electricity bills). It is all a convoluted web that you may be forgiven for thinking might have been designed to allow them to make promises, confuse, obfuscate and ultimately renege.

We understand that this has hit the national newspapers and that a number of journalists are investigating RES and the huge sums of money involved here. They raised over £40 million pounds for this project and it has apparently gone – where? The Director's pay is not in the public domain but one has to wonder!

What does this mean?

At the moment, work at Trelana Farm and Monks Farm appears to be continuing. This is good news as the last thing anyone wants is to be left with a pile of useless glass and steel industrialising our countryside and

removing good farmland whilst producing absolutely no electricity nor helping conservation.

But it is likely that any new company will seek to renegotiate terms with contractors and landowners as a prerequisite of them taking on the project. Whatever their assurances, if the project should proceed to liquidation then all leases can be simply terminated which would be the worst case for us all. One wonders who would do the clean-up.

If the project is rescued, we have urged the Parish Council and District Council to ensure that all the elements included in the original plans that were designed to mitigate the damage to the environment must remain in force. There was promised an index linked contribution of over £40,000 to the villages of Pyworthy and Bridgerule. This could be utilised for a number of projects to enhance our locality and help to defray the damage being done. We must push our councillors to ensure that this is still going to be paid – please do speak to them when you can.

At the same time as all this we are waiting with baited breath to hear the outcome of the appeal (by – yes, you guessed - RES!) to the refusal of the planning application for a massive battery installation just up from the substation. With battery fires being in the news fairly frequently the risk of toxic gases being blown on the prevailing wind directly across the Old Rectory and into the village is very real. The risk of further pollution of Derril Water which ultimately runs into the Tamar is also significant. RES paid scant

continued on page 24....

Ripple Energy Ltd going into Administration - the view of the Pyworthy Environmental Group continued from page 23

regard to these things whilst they further wooed landlords and walked over the residents. We hope that sense will be seen and that further greed should not prevail as better sites can be easily found in our push to decarbonising our energy supplies.

Pyworthy Solar: A Network of Lies & Deceit OR am I Just a Cynical Old Man?

By Dr. David Hillebrandt

In the last edition of the Pyworthy Post (337) I read an update on the progress of the Derril Water Solar industrial project. It stated "Remember, Derril water solar Park is Ripple Energy's first exciting shared solar project in the UK. Members not only benefit from the clean energy that will be generated but actually own the project". In the light of recent developments, I cannot now believe that Ripple will have the nerve to publish such a positive article in the current edition of the Pyworthy post.

As a local resident who had, for a variety of reasons, purchased one £25 share I was reassured that the future looked bright. Was I surprised when I had two E mails yesterday regarding the Solar Project? One was from Ripple energy to say they had "applied to be entered into administration". Although not a financial expert even I know this means they have gone bankrupt and have no meaningful funds in their bank account. I have lost my £25! The

second email was from an unnamed person calling himself/ herself/itself the "Derril Water Chair" stating that the co-op was "looking to transition to a new managing agent".

None of this surprised me. I may not understand high finance, but I am not stupid and I had been expecting this from the day I purchased that £25 share in the Co-Op. In fact, I had been expecting it from the day I first heard that RES had initiated the project. RES later morphed into Ripple who in turn became a Co-Op. What better way to break any trail of financial or environmental responsibility? We have no idea who will be responsible for the eventual decommissioning of this potentially toxic industrial project when it becomes time expired in forty years time.

Thinking back over the last four years it is obvious that the residents of Pyworthy, the Torridge Councillors and possibly even the landowners have been consistently misled and lied to regarding this project. Is it coincidence that the original application took place during lockdown? Traffic surveys were undertaken when there was no traffic, short duration wildlife surveys were undertaken in the autumn, the original RES local liaison officer was not able to visit the area due to lockdown restrictions. One RES official spoke to me online in a condescending manner and when I suggested that it is rare to see sheep grazing under our other RES owned local solar panels. I was told it was normal practice and apparently the local farmers involved would be changing to sheep farming rather

continued on page 25....

Pyworthy Solar – continued from page 24

milking cows.

You may remember the contempt shown to our community by one RES spokesperson who opted out of a liaison meeting in Pyworthy village hall with only 48 hours notice in August 2021.

Some members of the Pyworthy Environmental Group (PEG) have detailed knowledge of the electricity industry. They raised the matter of a possible need for battery storage with RES in 2022 but this was dismissed and we were told this would not be needed. Now in 2025 we find RES are appealing against the decision by Torridge District Council to deny them planning permission for the same battery storage units. A further attempt to industrialise this corner of rural Devon.

Ripple had been very keen to let the residents of both Pyworthy and Bridgerule know that they would be making large grants for local social projects via our Parish Councils. They even made an “educational” presentation to the children at Bridgerule primary school about the project. My simple mind fails to see how a bankrupt business can make the promised grants but I hope I am wrong. Whatever the outcome for the grants at least the children of Bridgerule will learn a valuable lessons about financial reality and the ethic of some businesses.

David Hillebrandt
21/3/25



APRIL ANNIVERSARIES:

15th Anniversary, 14th April 2010 The eruption of Iceland's Eyjafjallajökull volcano in 2010 led to significant disruption of air travel across Europe, and ashfall was reported as far as northern Europe.

40th Anniversary, 12th April 1985 –
Pyworthy Village Hall is opened, and became the hub of village life.

44th Anniversary, 12th April 1981: America launches its first space shuttle, Columbia.

50th Anniversary, 4th April 1975 - 50 years ago Microsoft, the computer software/hardware company, was founded by Bill Gates and Paul Allen in Albuquerque, New Mexico, USA.

75th Anniversary, 14th April 1950 – The Eagle comic first appeared on 14 April 1950. It featured *Dan Dare, pilot of the future* and *Captain Pugwash* and was the brainchild of Southport vicar Marcus Morris, with illustrations by Frank Hampson.

113th Anniversary, 15th April 1912 the anniversary of the Titanic's sinking, which occurred on April 15, 1912, is commemorated annually, serving as a time to remember the more than 1,500 lives lost in the tragedy.

150th Anniversary, 17th April 1875 – the game of snooker was invented by British Army officer Sir Neville Chamberlain while he was stationed in India.

WELCOME
to the
neighborhood

A BIG Pyworthy Welcome goes to: Stephen Meredith who has come to live with his brother, Rob & sister-in-law Diana in **Lower Village.**

CHURCH NEWS

By Liffy Lowes, on behalf
of St. Swithun's Church



"March brings breezes loud and shrill, stirs the dancing daffodil" certainly seems to ring true this year! We've had a persistent north or north-east wind for most of the month and that's made it chilly! At least, I think so! However, the ground has started to dry out a little which has helped.

As Easter is late this year (April 20th), March is a relatively quiet month but several things have taken place behind the scenes. On March 17th St Swithun's held the APCM (Annual Parochial Church Meeting) to which parishioners are invited to attend. It is their chance to hear all that has gone during the past year and comment if they so wish. It is a pity that more people do not come, they would probably be surprised to find out exactly what happens, where the money required to run the church comes from and where it all goes. It takes a lot of money to run a church, and it all has to be found from somewhere. We are lucky and get wonderful support from our parishioners; they are very generous, and thanks are given to all. At the meeting, two church wardens were elected; St Swithun's has been without church wardens for several years, but we now have Alison Davies and Liffy Lowes to take the reins.

I am able to give you further news on

the stained-glass window which I told you last month is in need of repair. It looks as if it will be repaired around the middle of June; it would have been good if it could have been done earlier, but the time scale just didn't fit in.

Next Sunday March 30th, is Mothering Sunday and we hope to have plenty of families in church for the service at 9.30am. There will be activities for the children to do, daffodils for youngsters to take to mums (and grans); there will also be refreshments at the end of the service. Please do try to come along, I am sure you will enjoy it! For children, we also have several future dates for them. On Sunday April 6th at 9.30am, we have our usual Family Service, it being the first Sunday in the month, when there will be spring/new life craft activities for the children. There is a free Easter craft session for all children, when they will be making decorations on April 13th between 3 and 4pm. This will be in church, but there is no service. Finally, on April 20th, Easter Sunday, at 3pm, we have our Easter Service where there will be crafts and painting activities. Plus, an Easter Egg Hunt!! These activities and services should be great fun for the children, so do bring them along.

I note that a little over a year ago, I hoped that the world might be a happier, healthier place. Sadly, this is not so and I'm sure no one can fail to have seen some of the dreadful pictures of the suffering of thousands of people in the Middle East. Perhaps, we can all pray for the countries of Ukraine, Gaza and Yemen and hope that one day, not too far off, the World can be a better place. I pray that it will be so.

See our events poster on page 28.



Shapland Accountancy

We are a local long established family run firm with over 40 years experience. We provide Accountancy & Bookkeeping Services throughout Devon and Cornwall.

From small to large companies, Sole Traders, Partnerships, Limited Companies whatever you need, we can help.

Bookkeeping, Tax returns, Payroll, VAT or just advice, contact us to see what we can do for you.

Email Us: admin@shaplandaccountancy.co.uk



Find us on
Facebook



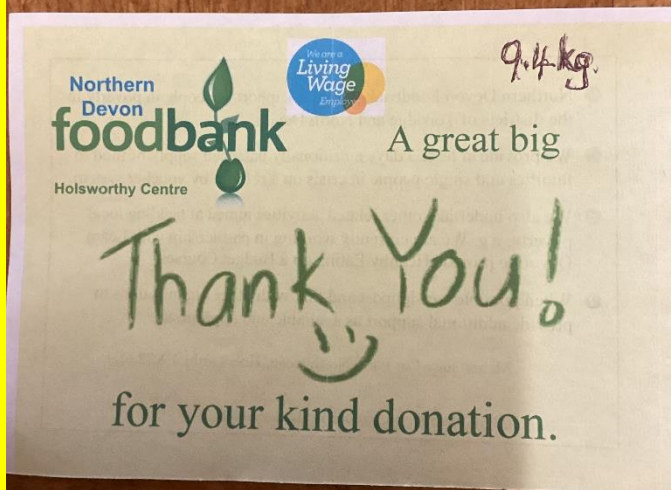
A SAFE SPACE
TO HAVE FUN
WITH YOUR
DOG!

What we offer

- 1 acre field in Holsworthy, Devon
- Beautiful, quiet setting, no nearby roads
- Hardstanding parking area in field
- Fun agility equipment & obstacles
- Long grass enrichment areas
- All weather walking track
- Fresh water available
- Space to run free
- Secure 6 ft fencing
- Exclusive booking

www.woofworthy.co.uk
07887 094320

Thank you Pyworthy



Keep the donations coming in!

Holsworthy Food Bank



Charlotte Jackson Photography

Rural photography covering:

- ✓ Equine
- ✓ Weddings
- ✓ Birthdays &
- ✓ Agriculture subjects.

Contact Charlotte for a quotation on:

07484 185915 or email her:

charlottejacksonphotography@gmail.com

Making memories!

Children's Easter Craft Session

will take place on
Sunday 13th April
3.00pm until 4.30pm.

**The session is FREE of charge
and refreshments are available.**

There will be a party bag to take home.



at Pyworthy Church



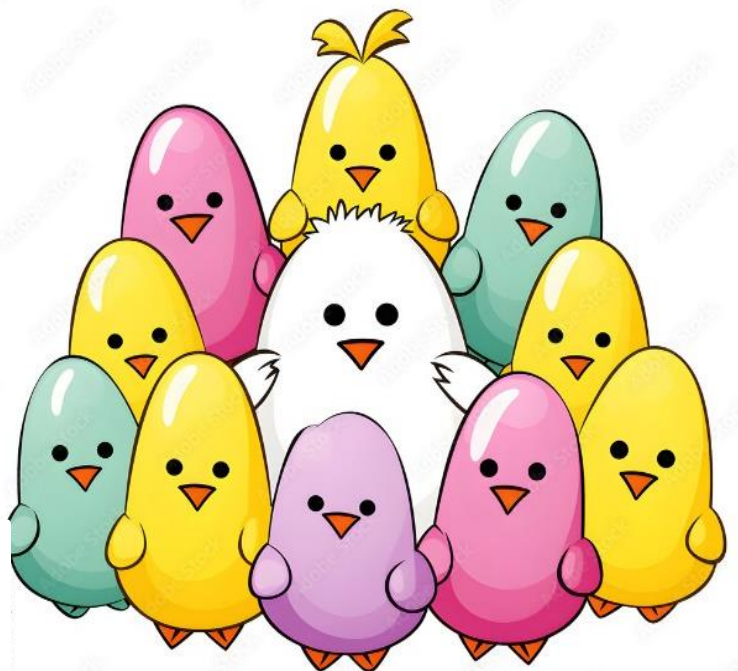
Easter »»» »»» EGG HUNT

**Easter Service, including
an Easter Egg Hunt &
Easter Craft activities
will take place in
Pyworthy Church at
3.00pm on
Sunday 20th April.**

**For more
information
contact:**

Amanda Witts

Tel: 07455 609876



MUSIC

PYWORTHY VILLAGE HALL presents:

Let's Celebrate 40 Years

The Club Classics Band

**will be playing dance
classics from the 70's to
the present day
at Pyworthy Village Hall.**

12th April, doors open at 7.00pm.

Licensed bar.

**Tickets £10 each in advance or
£12 on door.**

Tickets available from

Marie tel: 01409 254924 or

Ngaire at: The Loft Hair Salon

tel: 07977153848.

Everybody welcome!

Saturday 12th April

Registered charity number 290013

40th Anniversary

Cyber Security for Farm Owners and Police Rural Protection Units



At the Full Council meeting of Torridge District Council held on Monday 17th March an address was given to members by Police Superintendent Toby Davies.

Amongst the issues he spoke about was to inform members that the police had identified a growing incidence of Cyber Crime targeting farmers and those in rural areas.

Toby went on to emphasise that the police were taking this threat very seriously and had set up specialist Rural Protection Units who were there to help any farmers in particular who feared that they might have been, or become, victims of a Cyber attack in whatever form.

If anybody does have cause for concern in regard to this issue, please contact the police directly.

Councillor Kit Hepple



Torridge
District Council

Pyworthy Village Hall Anniversary Celebrations are in the Afternoon & Evening



**PYWORTHY VILLAGE HALL
IS 40 YEARS OLD!**

**SATURDAY 12TH APRIL
AFTERNOON**

**Let's celebrate together with a
BRING & SHARE TEA
from 2pm until 4pm in
the Village Hall.**

For details of evening celebrations see page 27.

Registered charity number 290013

Local Stove Supplier

CBL STOVES

The Showroom, Unit 5
Red Post, Bude, Cornwall
EX23 9NW

01288 381852
carl@cblstoves.co.uk
www.cblstoves.co.uk



- Stainless Steel twinwall flues
- Chimney Lining
- Iskoern Pumice lining
- Fireplace alterations
- Stove Installations
- Wood, Multifuel, Gas & Electric Traditional & Contemporary Stoves & Fires
- Chimney Rebuilds
- Slate, Granite & Glass Hearths
- Wood & Ceramic beams & surrounds
- Floating Shelves



Showroom Opening Hours:

Monday to Friday 9am until 4pm

Saturday 9am until 2pm

Call us now for a FREE no
obligation quote on:

01288 381 852

Website: www.cblstoves.co.uk

Email: carl@cblstoves.co.uk

Sign up & help the Village Hall



**Help us raise
FREE donations**
every time you **shop online**

How to sign up

1. Visit easyfundraising.org.uk
2. Search for Pyworthy Village Hall and support our cause
3. Raise FREE donations for us when shopping



Scan me

4,500 online sites will give us a free donation
when you shop with them - at no extra cost to you!



Over £34 million raised



1.9 million users

Read online at:
<https://pyworthy-parish.co.uk/>

and view the
paper in full
colour.

(don't use a
search engine)

**SPEED
LIMIT
30**



Holsworthy Food Bank

Donations are always
welcome to help those in
need.

You can donate tinned food,
packets or boxes of food.
Unfortunately, fresh produce
cannot be accepted.

Donations can be left in the
box at the back of St. Swithun's
Church, Pyworthy, which is
open every day. Thank you.

Church Bookings

To book a Wedding, a Christening, or a
Funeral, or for anything else, please
contact: Revd Alison Hardy, email:
reverendalisonhardy@gmail.com

Tel: 07780295752.

Benefice administrator:

Libbi York – email:

Holsworthybenefice@icloud.com

Tel: 07717750198.





Garden Waste Service 2025

Your current subscription period runs out on 31st May 2025. This years' service will cost £56 and runs from 1st June 2025 to 31st May 2026.

Sign up or renew from April 1st 2025.

Torridge.gov.uk/gardenwaste or call 01237 428700 and select option 3.



Torridge
District Council

Easter Bins



APRIL 2025 - Pyworthy Village, other villages may have a different collection schedule.

Black bag collection days are:

Friday 4th April

Saturday 19th April

Recycling- Every Monday

Boxes/Bags & Food Caddy

Weekly collection of 2 x boxes & 2 x bags. Weekly collection of food waste in caddy.

Garden Waste Collection dates:

Monday 14th April

Monday 28th April.

For more information go to:

www.torridge.gov.uk

Or phone:

01237 428700



ActionFraud
Report Fraud & Internet Crime
0300 123 2040



**Dates for your diary
can be found on
page 54 this month.**



Creative Craft Club

The afternoon craft club is going strong. This takes place in Pyworthy Village Hall on the 2nd & 4th Thursday of each month – 2.30pm until 4.30pm.

A donation of just £2 towards the hall is all it costs!

Come along and join us, just bring your own craft project to do & see what others are doing.

A great way to meet new people. We are a friendly bunch & love to chat & have a laugh.

www.thebridgemill.org.uk



THINK — DO YOU KNOW THE
CALLER IS WHO THEY SAY THEY ARE?

Action Fraud

In JANUARY
Nature dare not breathe it's frosty breath
Lest shoots awake and rise too soon
To find the earth unyielding yet
Cold and hard 'neath silvery moon

Then FEBRUARY shivers in
Its hidden energies within
Awake the earth from slumbers deep
And a tiny snowdrop dares to peep

Heralded by hazy sun
Cosmic magic has begun
Nature trembles - waits to sing
Winter's over - welcome SPRING

Jean Clark
Rydon Village

Poetry Corner

THE BRIDGE MILL AT BRIDGERULE

SUNDAY 11TH MAY • 2025 • 11AM - 4PM



£5 ENTRY, CHILDREN FREE + LIVE MUSIC/MORRIS DANCING

WORKING WATER MILL

DB WALLING



Cornish Stone
Wall Specialists

- Dry stone wall repairs
- Retaining dry stone walls
- Stone work with mortared joints
- Earth stone hedging
- Landscaping
- General construction & ground works
- Garden features

FREE QUOTES

Call Dan on

07968 996191



www.dbwalling.co.uk

WALLING | LANDSCAPING | CONSTRUCTION

J. Mansell 07896 945889

General Builder

General Building, Property Maintenance & Repairs

**Painting, Decorating, Plastering, Rendering,
Brickwork, Patios, Concrete, Foundations
Roofing, Carpentry & Joinery**

**Gutters, Plumbing, Drainage, Cob Conservation,
Limewash & Lime Plastering**

**Kitchens, Bathrooms, Chimney Lining,
Stoves & Garden Landscaping**

Jamescancott@gmail.com



Trigon Farm, Derriton, Holsworthy. EX22 6JU

We offer:

- ✳ Seasonal flowers for any occasion
- ✳ Veggie boxes
- ✳ Easy gardening courses
- ✳ Flower arranging workshops
- ✳ School visits
- ✳ Guided tours of the centre
- ✳ Private events

Opening hours:

Tuesdays, 9.00am till 6.00pm.
Pizza evenings (check the website for the next date).

www.trigonfarm.co.uk

Call Al on Tel: 07988484069

More Useful Contact numbers:



Holsworthy Food Bank:
Tel: 01271 377077

Holsworthy Community Fridge:
email
mtrudgill@dmatschools.org.uk

Samaritans: Tel: 116 123

Age UK: Tel: 0800 055 6112

Domestic Abuse Women's Aid:
Tel: 0808 2000 247

Domestic Abuse Men's Advice line:
Tel: 0808 8010 327

Childline: Tel: 0800 1111

Domestic Abuse Helpline



Phone:

**0808 2000247 for free &
confidential advice.**

More information available
online.

If in danger phone: 999





Pyworthy Poser Quiz for APRIL 2025

Multiple Answers this month! A family suggestion! On a dank night on the TV, grab a mug of tea or coffee (or even something stronger?), then put 50p each into "the pot" and have a family "Quiz Night". Have a sheet of A4 paper each and pass it to the "Pending File" for marking when the answers are published in the May edition of Pyworthy Post.

1. The following are the 'nicknames' of 4 current EFL Football Clubs. Name the Clubs! (4)

"The Hatters"; "The Cobblers"; "The Stags"; "The Mariners".

2. Since 1977 (as at 2024), which 3 countries have held the Men's 100mtrs World record?

3. Name the three Primary Colours?

4. What are the 4 most common gases in Earth's atmosphere?

5. The World's 4 deepest waters are?

6. The 4 most populated creature types on Earth are?

7. The 4 (allegedly) most unhealthiest fish to eat are?

8. The UK's 4 most common trees are?

9. The top 3 most dangerous fish in the seas are?

10. In 2024, what were the most common boys & girls names chosen? (4 - two each).

37 pts are your target!

Pyworthy Pilgrim.



ARTHUR W. BRYANT FUNERAL SERVICE

CAMELFORD	BUDE	HOLSWORTHY
01840 214891	01288 352282	01409 253000

**INDEPENDENT FAMILY
FUNERAL SERVICE**

**MEMORIAL
MASONRY**

**OUR FAMILY CARING FOR YOUR
FAMILY FOR OVER 50 YEARS**

**PRE PAYMENT FUNERAL
PLANS**

AWBRYANT.CO.UK
CARING@AWBRYANT.CO.UK



Slimming World taste the *freedom*



Contact your local Slimming World Consultant
and join a warm and friendly group today!

NEW VENUE

Bude

Bude Rugby Club
Wednesdays
5.30pm & 7.00pm

Holsworthy

Holsworthy Memorial Hall
Tuesdays
5.30pm & 7.00pm
Thursdays
9.00am & 10.30am



   slimmingworld.co.uk

touching hearts, changing lives

Pyworthy Post

Deadline

The PRINT
deadline for the
next Pyworthy
Post is: Thursday
24th April 2025 at
12 noon.

Please email
your news as
early as possible.

Thank you.

View Pyworthy
Post online in
colour. Search:

[https://pyworthy-
parish.co.uk/](https://pyworthy-parish.co.uk/)

No Dog Fouling



Bag it - Bin it

Sunrise, Sunset Times for the coming month:

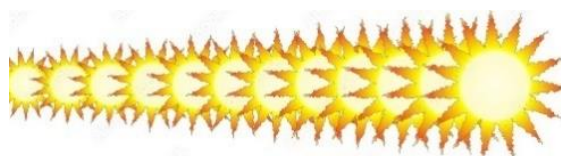


1st April 2025 (UK, Exeter)

☀ Sunrise time: 6.49am GMT

🌅 Sunset time: 19.46pm GMT

🕒 Length of day: 12 hrs 57 mins.



30th April 2025 (UK, Exeter)

☀ Sunrise time: 05.49am GMT

🌅 Sunset time: 20.33pm GMT

🕒 Length of day: 14 hrs 43 mins

Much and More Needs to be Said About AI

By Brian Meadows of Nofix-Nofee

A few weeks ago, China declared heavy involvement in AI and America reacted badly! Their stock market lost a billion dollars.

The system they created is called DeepSeek, set up in 2023 in Hangzhou, China and is its first AI large language model. DeepSeek began to attract attention a couple of months ago and is competing against similar American models such as ChatGPT and OpenAI but is more cost-effective and uses expensive Nvidia chips to train the system to adopt volumes of data. Recently, Apple and Google made the system accessible through their App stores.

But it was follow-up research a few weeks ago that caused the panic. It detailed another DeepSeek AI model called R1 which has advanced "reasoning" skills and the ability to rethink problems and is significantly cheaper than other systems.

If readers think AI is a new elaborate play thing, please think again, to register with DeepSeek you are required to accept adverts and trackers and disclose your personal data, this information like TikTok can be accessed by the Chinese authorities and a myriad of scammers whose only aim is to steal your money!

Now our government wants to make the UK a high-flying player in the AI world but haven't planned on how the infrastructure will be supported.

1st a location is required, about the size of 6 football fields, 2nd is the power it will need to run the data banks.

"Bill Gates is building his own Power Station". The power required, based on current outputs, would leave London in a black out. So, a new power station would be required just to service AI data banks and that will take 10 years to build and who do you think is going to pay for it?

With a net zero policy the whole of Devon would need to be covered in glass to make the electricity to run it and the heat generated from the computers would cancel out any benefit of wind power!

AI is now no1 in the scammer's arsenal, fake images and cloned voices are just a few of the tricks being used. The more elaborate scams involve Bitcoin and large financial investment, and politicians promises.

However, students can use AI to complete course work and dissertations, meaning it may be possible to get a degree without the learning. Now that is frightening!

Maybe the education authority will have to train teachers to use AI to look for repetitive text.



**For free Telephone advice contact
Brian Meadows, Tel: 01288 381061
Nofix-Nofee Computer Repairs Service**

Holsworthy Walk & Talk Group

By Gill Aston



Why not scan
our QR code?
This will take you
to our website.



We had some beautiful sunny mornings for our walks last month. Both Level 2 and Level 3 groups visited Dunsdon Nature Reserve. The route across the Culm Grassland was too soggy for us to attempt but no doubt the orchids and other wildflowers will soon be coming out in all their splendour. We noted that this section of the Bude Canal had also been cleared of vegetation. We remarked the previous month that works had been carried out along the Lower Tamar section. The tow paths along the entire route are beautifully kept making walking very pleasant in peace and tranquillity.

Our Level 3 walk from Bradworthy Square took us through Berridon Farm. This section of the footpath has recently been re-routed with a 'Permissive Path' to avoid the farmyard. The new path is very well signed, maintained and took us into a field where we found some very friendly donkeys who seemed to find us as interesting, and we found them.

In February we ran a Walk Leader Training course. Thank you to all who attended and congratulations to John Weighell and Richard Cook who have now progressed to be Walk Leaders. Three other walkers are in the process of completing the process. Walk Leaders and Back Markers are an essential part of the Walking Group, and we thank all those who are willing to give up their time and effort to support our ever-increasing numbers. As we move into spring, with the

with the weather hopefully getting warmer and drier, our walks will be heading out and about to the likes of Bude, Germansweek and even the Meldon Valley, where we usually greeted by a magnificent display of bluebells, which tends to lift one's spirits due to the blanket of colour and heady fragrance.

If you would like to join us at any time we walk on Mondays and Fridays. All walks start at 10.30 am and are **FREE**. Membership forms are available from our Volunteer Walk Leaders prior to the start of the walk.



Above: Gill's Level 3 group pictured with the donkeys at Berridon Farm, Bradworthy

Holsworthy Walk & Talk Group contact details:

Our website has lots of up-to-date information, together with our current programme of walks, details below:
holsworthywalkandtalk@gmail.com
<http://holsworthywalkandtalk.co.uk>

Phone contact numbers:

Gillian Aston 07854677784 or
Mike Jackson 01409 261196 or
Paul Davies 01409 253250.

Our walks programme is on page 41

Holsworthy Walk & Talk group report continued from page 40....

Our APRIL Programme of walks:



Level 2 & 3 walks are every Friday at 10.30am. All these walks aim to be completed in about 90 minutes.

APRIL Walks: Walk starting points as indicated below:

Friday 4th April – Level 2: BRADWORTHY DINWORTHY LOOP. Start from The Square. Mainly a road walk plus a bridleway, can be muddy, gentle inclines. **LEADER:** Paul Davies. EX22 7SZ.

Level 3: - CHILSWORTHY. Start from Village Hall car park. Quiet lanes, paths, steps and some steep inclines. 2 stiles. **LEADERS:** Kim Harris & Eric Boundy. EX22 7BB.

Friday 11th April Level 2: RYDON LANE.
*** 🍷 **20 YEARS ANNIVERSARY**

WALK 🍰 *** Start from outside Holsworthy Museum. Mainly hard surfaces, gentle slopes, can be muddy. Parking charges.

LEADERS: Michael Heryet, Mike Jackson & Gill Aston. EX22 6DJ.

Level 3: -RYDON LANE. *** 🍷 **20 YEARS ANNIVERSARY WALK** 🍰 *** Start from outside Holsworthy Museum. Mainly hard surfaces, gentle slopes, can be muddy. Parking charges.

LEADERS: Michael Heryet, Mike Jackson & Gill Aston. EX22 6DJ.

Friday 18th April - Level 2: HALWILL JUNCTION. Start from Parish Hall car park. Lanes, tracks, inclines. Can be muddy in parts. **LEADER:** Cheryl Collins. EX21 5XR



APRIL walks programme continued:

Friday 18th April continued

Level 3 - HALWILL JUNCTION. Start from Parish Hall car park. Lanes, tracks, inclines. Can be muddy in parts. **LEADERS:** Eric Boundy & Kim Harris. EX21 5XR.

Friday 25th April - Level 2: BUDE, EFFORD DOWN via EBBINGFORD

MANOR. Start from Bude Tourist Information car park. Hard tracks and paths, some inclines. Parking charges. **LEADER:** Mike Jackson. EX23 8LE.

Level 3 - MELDON BLUEBELLS. Start from reservoir car park. Parking charges. Hard tracks, some rough surfaces inclines, a few steep.

LEADERS: Jacqui Shapland & Eric Boundy. EX20 4LU.



Above: Gill's Level 2 group pictured on their walk in the Pyworthy area.



New members are very welcome.

Pyworthy Parish Council Meeting

"Councillors met on Thursday 20 March 2025 for the last meeting of 2024/5 before the AGM in May. Improvements to the uneven path by the triangle alongside the war memorial were discussed and it was resolved that quotes would be sought. Cllr Ken James from Torridge Council updated on government proposals to reorganise local government across Britain, merging District and County councils. An Expression of Interest was to be submitted on the following day (21 March) proposing a Unitary council covering North Devon and Exeter (including Torridge area), alongside two further Unitaries, one covering Plymouth and another South Devon/. County Council elections in Devon will go ahead in May as usual.

Cllr Hepple (Torridge) announced that Ripple, the company building Derril Water Solar Park, had gone into voluntary liquidation. The solar park installation going ahead in Pyworthy would be unaffected and would be completed. There was no news on the fate of the proposed community fund associated with this project and this would be chased up.

There had been further issues with large vehicles causing problems in the village. A misdirected lorry carrying timber had caused damage in the centre of the village, but this had been repaired.

Councillors discussed the proposal by Holsworthy Health Centre to discontinue hospital blood tests. It was resolved that the Parish Council would write to the Health Centre and MP Geoffrey Cox outlining the impact of

this decision on Pyworthy residents. Councillors discussed marking the 80th anniversary of VE Day on May 8th, in line with planned National events. It was requested that a "Save the Date" be published in the next Pyworthy Post with more details to follow. Keep an eye of for more details over the next few weeks!

Regards, Simon Davies, Clerk to Pyworthy Parish Council.

DOG FOULING/DOGS OFF LEAD

Following a number of recent and ongoing incidents of dog fouling in the churchyard and surrounding streets in the village centre, residents are reminded that dogs should be kept on leads and not allowed to roam unaccompanied.

Residents are asked to clear up after their dogs at all times."

PYWORTHY PARISH COUNCIL

Here are the contact telephone numbers for our Parish Councillors:

Ros Skinner: Chair

01409 254159 or 07800667842

Andrew Parrish: Vice Chair

01409 254303

Nick Lock:

01288 381529 or 07989595372

Rob Moores: 01409 254192

Angela Skinner: 07794 344117

Martin Brennan: 01409 691096

Andrew Beaven: 01409 253509 (after 7pm).

For general enquires phone:

Simon Davies, Clerk on:

tel. 07989747416.

Email address:

pyworthy@yahoo.co.uk

**The date of the next meeting will be
Thursday 22nd May at 7.30pm.**

John Sanders Park Trust



2025 DRAW

Our park is 100 years old this year!



The 2024 Lottery in aid of the Park in Pyworthy has now come to an end. A huge thank you must go out to all of you who supported our Park by buying Lottery tickets and we trust you will continue to support your Park by buying tickets for this new year of 2025.

Lottery 2025

You need to be in it, to win it! Give it a try this year.

If anyone would like to purchase a £10 lottery ticket ready for the next draw, please contact:

**Jane Oliver on: 07500 834620 or
Rob Moores on: 07748 981910.**

BACS Information:

If you wish to buy a draw ticket and wish to pay by BACS please do so, our Bank account details are below:

Barclays Bank
Trustees Sanders Trust Pyworthy
Playing Fields
Sort Code 20-04-59
Account number 10770388

**It will cost you just,
£10 per ticket.**

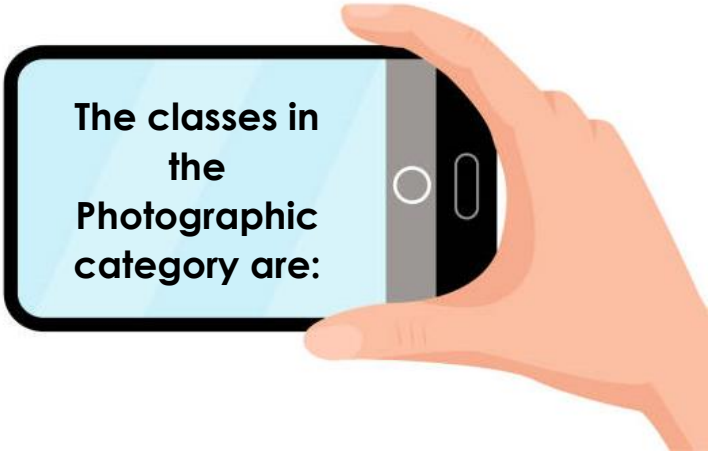
Volunteers:

We would also really welcome volunteers who may be able to give some time on Tuesday evenings in the summer to help tidy up and maintain the Park and Play Area. Please contact Rob or Jane if you can help us.



News about the 100 Year Anniversary of Pyworthy Park will be released in the near future. Watch this space!

The Pyworthy Annual Village Show will be held on Saturday 6th September 2025



The classes in
the
Photographic
category are:

Photography Category

Classes this year:

- ❖ Fungi
- ❖ Nature in the garden
- ❖ The sky at night
- ❖ A misty morning
- ❖ Farm machinery
- ❖ Water

Get ahead of the game, and snap
away over the next few months,
when photo opportunities arise.

FREEBIES



FREE

New owner
must collect
& move
machines.



Cement Mixer & Garden Rotavator

The machines are no longer
required.

The cement mixer works well but
hasn't been used for a while.
Garden rotavator will need a
good service.

Phone: Terry 07975580966



Useful Local Contacts Your Local Business & Services Directory

**Advertise in the Contacts
list for just £15 per year!**

Catering, Food & Drink SuppliesHargold Trading Ltd, 01288 381337
Chimney Sweep..... Humphrey Pullar 01409 240138/07984406290
Coarse FishingYeomadon Coarse Fishing 01409 253378
Computer Repairs Brian 07534804101
Dairy ServicesFresh Fields Dairy Services 01288 381529
Decorating & Property Maintenance Julian Lapham 07765626069
Driving Tuition Evelyn Sharman 01409 259848/07885352082
Dog Grooming..... Avril's Mobile Grooming Service, 07811 320914 or 01288 381795
Dog Exercise facility Woofworthy, Holsworthy, call Becky 07887094320
Double Glazing M.A.G. Double Glazing Repairs 07969 234161
Electrical Contractors..... Algo Electrical Contractors01409 254595
Electrical Contractor Mike Daniel 01288 381342/07977 596772
Estate Agents Kivells 01409 253888
Fruit, Veg, Flowers & more Trigon Farm, Derriton – Al, 07988484069
Funeral Directors Arthur W. Bryant Funeral Service 01409 253000
Funeral ServicesDenise Wellington Funeral Services 01288 359277
Foot Care Kate Lord: 07557379099 Email: katescompletefeet1@gmail.com
Fencing/Garden structures..... WWW.RUBY-GROUP.CO.UK
General Builder James Mansell - General Builder 07896945889
Gun ClubWest Devon Air Gun Club, Nigel Palmer, 01409 254133
Grass cutting & garden maintenance Antony Jarvis, 07990016467
Heating Engineer Greg 01409 478198
British Hedgehog Preservation Society.....Bob Gelder, 01409-253791
Herbalist Diana Lee, Registered Medical Herbalist 01409 254450
Holiday Accommodation ... 01288 381272 email: jay@glebehousecottages.co.uk
Holsworthy NHS Dental Care 01409 255525
Holsworthy Golf Club.....01409 253177
Holsworthy Library 01409 253514
Holsworthy Medical Centre 01409 253692 **District nurses** 01409 255134
Holsworthy Post office & Sorting Office 01409 253608/01409 253236
Holsworthy Rural Community Transport team ... 01409 259001
Holsworthy Walk & Talk Group ...Gill Aston 07854677784
John Sanders Park Trust Martin Brennan 01409 691096
Line Dancing Group Brenda Martin 01409 253015
MOT & Garage Services ...Pyworthy MOT Ltd, Simon Martin 01409 254275
National Grid (report a problem line) National Grid is on 0800 032 0311
Oil Fired boilers & tanks/service & installations Greg 01409 478198
Police Non-urgent phone calls 101/email devon-cornwall.police.uk
Pyworthy Village Hall Bookings: Marie Heard 01409 254924
Organic Farm, Trigon Farm selling fruit & veg etc phone Al on 07988484069
Renewable Energy/replacement windows Renew SW Ltd, 01409 253533
Round Baling Stan Hopper 01409 253412
Rubbish Removal & Light Removals Service Man with a Van - Nigel 07725564331
Therapeutic Treatments CN Holistics 01288 381201
Torridge District Council www.torridge.gov.uk 01237 428700
Walling & landscaping services Call Dan on 07968996191 for a quote.

Algo Electrical



Domestic ~ Industrial ~ Commercial

Electrical Installation; fault diagnosis; consultation & advice, including renewable energy, alarm and security camera systems.

Telephone 01409 25 45 95

www.algo-sales.co.uk

Nofix-Nofee

Low Cost Computer Repair Services

We come to you!

- * Home or Office - No Call Out Fee
- * Email & Broadband Repair
- * Virus Infection Resolve
- * System Restore
- * New System Installation
- * Refurbished Laptops & PC's
- * Free Telephone Help & Advice
- * Hourly Rate and Fixed Fee
- * Onsite Fix & Repairs

Computer
Repairs
from only
£25



Tel: 01288 381061

Mobile: 07534 804101

Email: mail@nofix-nofee.net

Laptops for Schoolwork



Refurbished laptops that have been donated by generous customers, may be available to a child in need, for schoolwork.

**Contact Brian Meadows:
Tel: 01288 381061.**

**Read Brian's article on
page 37.**

Save Your Used Stamps for the Hedgehogs!



British Hedgehog Preservation Society

Macmillan no longer sells used stamps, but Bob has found another very worthwhile charity, who can make use of our stamps.

Please Save your used Postage Stamps!

Used National & International stamps can be recycled.

They will be used to generate income for the

British Hedgehog Preservation Society.

Simply pop stamps into an envelope and drop off at:

**9 Shortlands, Pyworthy or
Sunnymead, Pyworthy.**

Thank you!



No Transport? Need a pickme-up?

Ring & Ride

- Door-to-door service for all ages
- Wheelchair & scooter accessible

Cars for Care

- Door-to-door service
- Times to suit your appointments
- 50p per mile

Here for Hire

- Mini Bus Hire for Community Groups & Charities
- £100/day - £65/evening
- Self drive (experience of driving a larger vehicle)

Call
01409 259001

office@holsworthytransport.co.uk

The Carroll Suite, Holsworthy Memorial Hall,
Holsworthy EX22 6DJ



NO FOULING

PLEASE CLEAN IT UP AFTER YOU DOG!

DOGS IN THE CHURCHYARD

St Swithun's has no objection whatsoever to dogs being walked through the churchyard as long as they are on a lead and under control. What we do object to is dog poo on the paths and on the verges. Would you like to see dog poo lying on your loved one's grave? If your dog chooses to relieve itself when walking through, would you please pick up the result and dispose of it in the in the poo bins. I appreciate there is not one at the north end gate, but there is one outside the park across the road from the church gate. I intend to ask the parish council if they can provide a poo bin at the north end of the church. I am sorry if this offends anyone, as most dogs are taken through the churchyard in the correct manner.

M.A.G Double Glazing Repairs

- ❖ Replacement of misty or broken glass units
- ❖ Replacement of hinges, handles, locks & seals
- ❖ Letter boxes and cat flaps installed
- ❖ Installation of fascias, soffits & guttering

Over 15 years' experience



Call MARK for friendly advice and a
NO obligation quotation.

Tel: 07969 234161



DENISE WELLINGTON
FUNERAL SERVICES

COMPASSIONATE, CARING,
TRUSTED & PROFESSIONAL

Memorials | Pre-Paid Funeral Plans

24 Hour Contact 01288 359277



Dementia
Friends
An Alzheimer's Society initiative

Golden Charter 
Smart Planning for Later Life

denisewellingtonfunerals.co.uk
enquiries@denisewellingtonfunerals.co.uk

**Maureen and Milton's
Colourful Hawaiian Themed
Birthday Party
Saturday 21st June
at
Pyworthy Hall**

Dancing from 7pm to 10pm

Charity Raffle

*No presents please but
donations for the raffle very
welcome* 😊

Entertainment from award winning
Nikky Napier

All proceeds to Bude Sea Pool

BYO Nibbles and Drinks

Tickets £10.00

Call 07779695433

Everyone Welcome

**APRIL
2025**



Nature Notes

By Bryony Rylett

Where might you find an amphibian celebrated by Beatrix Potter, a 'small brown bird' with an interesting romantic life and members of a useful, revered and mythologised tree family?

Answer: in Pyworthy parish and in **Nature Notes** where the sometimes overlooked and common-all-garden are brought into focus.

The **Common Frog**, *Rana temporaria*, is found throughout the UK, from snowline to sea level. Its preferred habitat is undisturbed, unpolluted, shallow freshwater and shady moist places.

Contrary to much imagery, frogs spend much of their time out of water, preferring open woods and verdant pastures, close to water. They rarely stray more than a kilometer from their breeding pond.

They are a rare sight now around farmland due to the increase in arable farming with fields being treated with pesticides and the infilling and neglect of ponds.

Breathing through their skin they hibernate from October to February, in mud in ponds and ditches then, drawn by the smell of ripening algae, a food source for tadpoles and using their eyes to assess obstacles and ears to listen for the continual calls of males, they head back to their home waters to breed.

By April frogs have usually laid spawn, but this can be as early as January the milder far South West.

The frog spawn pictured was part of an enormous clump, of thousands of eggs, seen in the shallow water of the Bude canal, near Puckland, in late February.



Frog spawn

Frog spawn is identified by jelly-like lumps while toad spawn is laid in strings. The jelly protects the embryonic amphibians, keeping them warm and speeding development.

Eggs hatch after 14 days depending on the warmth of the weather. Frog tadpoles are brown with bronze/gold speckles

Continued on page 51

Nature Note – APRIL continued from page 50.....

while toad tadpoles stay black.

Some 10 to 16 weeks after eggs are laid tiny froglets appear. In dry years they remain around the damp hedges of ponds waiting for rain to move out and seek food and homes. In Beatrix Potter's 'The Tale of Mr Jeremy Fisher' (1906) Mr Fisher lived in a 'slippy-sloppy' house at the edge of a pond catching minnows and avoiding being eaten by trout.

Your garden pond may support many frogs and is a vital refuge as habitats decline in the wider countryside.

Tadpoles are eaten by a variety of predators including Dragonfly Nymphs, Diving Beetles, Newts and Fish while Blackbirds, Crows, Herons, Mallards, Hedgehogs and Foxes eat froglets and frogs.

Many frogs end up as roadkill, while migrating to and from their breeding waters, some die in hibernation and others of Ranavirus, a rampant disease imported from the USA.

Common Frogs can leap or hop up to 50 cm using their powerful, striped rear legs. The record for frog leaping length is held by a South African, Sharp Nosed Frog with a leap of 5.3 metres!

Not a frog eater...the **Dunnock** - *Prunella modularis*, otherwise known as the Hedge Sparrow, is a shy bird, easily overlooked as just another 'small brown bird' but its demure plumage contrasts with its more colourful love life.

Dunnocks are similar in colouration and size to House Sparrows but are not a sparrow rather the only member of the Accentor bird family. Their sweet song is similar to that of skylarks.

Male and female Dunnocks have the same plumage: blue/grey heads, brown, stripey body feathers and red/brown legs. They are usually seen alone or in pairs and are adaptable to a variety of habitats.

Dunnocks have unusual breeding behaviours. They pair as male and female; however, females will also sometimes mate, secretly, with more than one male to ensure the chicks will be raised by two fathers.

Sometimes males will mate with multiple partners, looking after several broods at once, resulting in males and females ending up with multiple partners and multiple territories.

Dunnock's cup-shaped nests are located in dense shrubs and bushes and are favoured by cuckoos as a host.

While birds are pairing and nesting, another sign of spring is the appearance of catkins on Hazels and Willows.

There are 400 species of willow, several of which are native to the UK, plus many cultivars. They are described either as sallow, if broad leaved, or as osiers if narrow leaved.

Continued on page 52





Pussy Willow

Goat Willow (Salix) - Salix caprea is abundant in Pyworthy and is one of the first trees to flower in spring with grey/silvery white, ovular and downy flowers. The flowers are said to resemble cat's paws hence the name Pussy Willow.

Male and female catkins, on separate trees, appear before the leaves. Male catkins produce yellow pollen, an important source of food for early emerging pollinators.

Willow is mentioned in Shakespeare, the Bible, in literature and in the myths and legends of many cultures as well as in songs.

In Shakespeare's Othello, Desdemona's 'Willow Song', precedes her tragic death; Pocahontas seeks Grandma Willow Tree's wisdom in Disney's film; there's a Whomping Willow in Harry Potter and the title of Kenneth Graham's 1908, 'The Wind In The Willows' tells the reader to expect a river setting where willows often grow.

The Greek poet Orpheus carried willow branches on his adventures in

the underworld while Apollo gave him a lyre carved from willow.

In Scotland, Architect Charles Rennie Mackintosh named his Willow Tea Rooms for the association of the Gaelic name for willow while in China willow's properties of regrowth and vigour symbolise renewal, vitality and immortality.

Psalm 137 contains the words: "There on the willow trees we hung up our harps" referring to the use of willow wood for making harps and lyres and Ezekiel 17:5 states: "The prophet plants a seed"...and "sets it like a willow tree", referring to willow's symbolism of rebirth and vitality.

Willow has been associated with forsaken lovers and in earlier times those forlorn folk would wear a cap or crown of willow leaves and twigs to indicate their sadness and the Victorians adopted images of willows to adorn gravestones and mourning cards

The lyrics of Steeleye Span's 1975 song "All Around My Hat" references this custom of wearing "green willow" and Joan Armatrading's 1977 song 'Willow' contains several references to willow including: "Your willow, oh willow, when the sun is out".

Willow boughs decorated British churches on Palm Sunday in place of palm leaves while, in a less Christian use, the flexible shoots and branches of willow were made into whips and canes, called Sally Rods, used to beat children.

Infusions of bitter bark have been used as a remedy for colds and fevers and young willow twigs, if chewed, were used as pain relief; the active ingredient being salicylic acid. In the

Continued on page 53

Nature Note – APRIL continued from page 52.....

early 19th century this led to the development of the world's first synthetic drug: acetylsalicylic acid, marketed as Aspirin.

Salicylic acid concentrates in the tail glands of willow-eating beavers and was prized as a medicine resulting in beavers being hunted.

Due to willow's ability to absorb shock without splitting it has been used to make cricket bats and stumps while the Dutch made clogs from it, the Celts made chariot wheels and Romany gypsies used it to make clothes pegs. Native Americans tied pieces of willow to their boats as a totem for protection.

Before plastic took over, willow had multiple uses including in rope making,

weaving for baskets and making lobster pots, coffins and beehives and willow bark was used in tanning. However attractive it may be, many believe bringing Pussy Willow into your home will bring bad luck.

The answer to last month's Nature Notes question:

What is the collective noun for bullfinches is a **bellow of bullfinches.**

This month's Question:

Frogs and toads have different colour iris in their eyes. Which amphibian has which?

The answer will be in next month's Nature Notes.

HAPPY EASTER!



Man with Van Services



- ✓ **Light Removals**
- ✓ **Rubbish Clearance**
- ✓ **Pick ups and Drop offs**
- ✓ **Friendly Service**

Please give me a call for a no obligation quote: 07725564331

Fully insured with public liability and goods in transit insurance.

We comply with all regulations regarding the transit and disposal of waste materials. We have a current disposal licence issued by the Environment Agency.

Contact us for a free quote. No job too big or too small.

Email: nigel@manandvanashford.com Website: manandvanashford.com



Print deadline for the next edition of Pyworthy Post is:
Thursday 24th April 2025 at
12 noon prompt!

Diary dates this month:

(Dates & events were correct at the time of printing)

Holsworthy Walk & Talk group enjoy a walk every Friday, see their programme on pages 40 & 41. Also, members take a short walk in Stanhope Park on Mondays.

Saturday 5th April – Pyworthy Church Spring cleaning morning – see page 17/The Grand National (horse race)

Saturday 12th April – **Celebrating the 40th Anniversary of Pyworthy Village Hall** – afternoon Bring & Share tea, followed by evening entertainment – see pages 29/30

Sunday 13th April – Pyworthy church Children's FREE Craft Session/University Boat Race (Oxford & Cambridge)

Monday 14th April – Evelyn's walking group will be setting off from the Village Hall in Tetcott, EX22 6QX at 10am. New walkers are very welcome.

Thursday 17th April - Maundy Thursday

Friday 18th April - Good Friday/**Bank holiday**

Sunday 20th April – Easter Sunday

Monday 21st April – Easter Monday/**Bank holiday**

Wednesday 23rd April – Pyworthy Village Hall AGM at 7.30pm in the Village Hall.

Forthcoming Events:

Thursday 8th May – 80th Anniversary of VE Day celebration – more details next month.

Thursday 22nd May - Pyworthy Parish Council Meeting, 7.30pm in the Village Hall.

Saturday 21st June – Charity Birthday party in Pyworthy Village Hall, see page 49 for details.

Saturday 6th September – Pyworthy Annual Village Show, more details to follow.

"SAVE THE DATE!"

A parish event to celebrate the 80th anniversary of VE Day will be held on Thursday 8th May in the evening. Please hold the date. Full details in the next edition of Pyworthy Post."

Simon Davies, Clerk, Pyworthy Parish Council"



*To all the
reader of
Pyworthy Post!*



RUBY

WWW.RUBY-GROUP.CO.UK

CLADDING | GATES | PLANTERS |
FENCING | PERGOLAS & MORE

BUILD YOUR
BESPOKE
DREAM GARDEN



SCAN ME



CLADDING

01409 231 763

GATES

WHY RUBY?

- ✓ MANUFACTURED IN HIGHAMPTON
- ✓ BESPOKE BUILD AVAILABLE
- ✓ FAST DELIVERY
- ✓ MADE TO MEASURE

FENCING

PLANTERS

PERGOLAS

Your Local
Team

KIVELLS

www.kivells.com



Kivells have served Holsworthy, the surrounding area and its community since 1885 and we are passionate about property. We know our local areas intimately and our dedicated staff strive to offer the best customer service in the industry.



Holsworthy

Kivells Property Suite
Market Square, New Market Road
Holsworthy, Devon
EX22 7FA
01409 253888
holsworthy@kivells.com



Jack Alford
Valuer



Mark Kivell
Office Manager



Daniel Stokes
MNAEA
Director



William Branton
Sales Negotiator



Enya Garrett
Property Secretary

