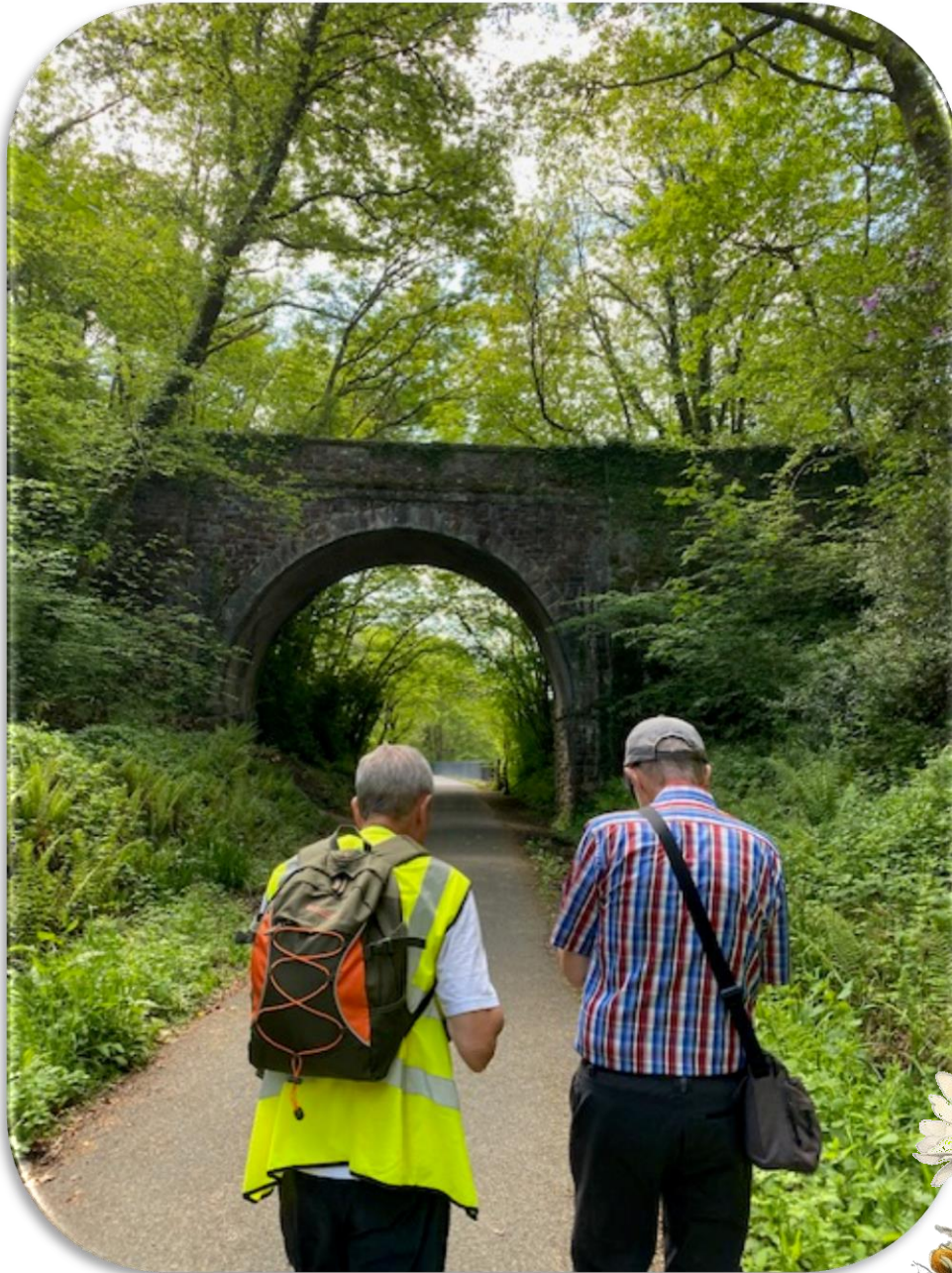


PYWORTHY POST



Members of the Holsworthy Walk & Talk group approaching the bridge over Rolle Canal. Under which tugboats passed, and over which went the steam trains.

What's in your paper this month?

A very interesting article about the history of our local electricity supply.

Newly formed
Pythworthy
Environmental
Group (PEG) will improve our local environment.

and much, much more turn the page and come inside.



Read online at:

<https://pyworthy-parish.co.uk/>

and view the paper in full colour.

June 2025
Issue number 340

**QUALIFIED ANIMAL BEHAVIOURIST
AND ANIMAL SCIENTIST BSC (HONS)**



Spirit Paws
OVER 20 YEARS EXPERIENCE

07851 291 081



www.spiritpaws.org



Snapchat



Insagram



TikTok



Facebook



Youtube

Welcome to the JUNE Edition



By Marion Ravn

Halfway through the year already! The Bluebells have been amazing this year, the best for many years. They are one of my favourite flowers; I like Dandelions as well, but don't tell my husband as he hates them – he calls them weeds!

If you have an interest in Dandelions, Bryony Rylett has written an interesting article all about them on page 50. Thank you to Bryony for her research.

There will be a meeting on the 5th June at 7.30pm, to discuss the **Pyworthy Park**. Please attend, as the park is an important part of our village and needs to be supported.

This month there are some great articles in the paper for you to enjoy. The Pyworthy Environment Group are hoping to make a real difference locally - their article is on pages 22 & 23 a great read. You can also find information about local forthcoming events, clubs and walks throughout the paper.

We welcome aboard two new advertisers this month. A qualified animal behaviourist – see Kirsty's advert on page 2 for more information. Also, The Bude Jazz Club, see page 27.

Sadly, we have also lost 2 advertisers this month, which is a shame.

Don't forget the Pyworthy website is now live!

Make the most of summer, while it lasts. Well until next month.

Keep the news and articles coming in. Email: pyworthy@post.com

Page Index:

2. **NEW** Advertiser
3. Editors welcome & page Index
4. June Birthdays
5. Church service information
- 6/8. Village Hall news, events & clubs
9. Sponsor's page
- 10/12. My Electrical Industry Recollections by Mike Godfrey
12. Holsworthy History Society update
13. Sponsor's ad & Line Dancing Club
- 14/15. Evelyn's Walks group report
15. May's Poser answers
- 16/17. Pyworthy People – Marie Heard
18. Men's Skittles Team & sponsor's page
- 19/21. Gardening with Mike Godfrey
- 22/23. P.E.G. report
24. Holsworthy Library – what's on in June
25. St. Swithun's Church News
26. Derril Water Solar Farm update
27. Sponsor's page
28. Charity Event this month in aid of the Bude Sea Pool
29. Father's Day & Community Pub campaign
30. Holsworthy Vintage Rally in June
31. Sponsor's page
32. Easyfundraising for the Village Hall & Open Farm Sunday
33. **T.D.C. BIN collection dates**
34. Poetry Corner & The Creative Craft Club
- 35/36. Sponsor's pages & useful contact numbers
37. June Poser Quiz & sponsor's ad
38. Slimming World & sunset & sunrises times
39. Computer News
- 40/41. Holsworthy Walk & Talk group report & programme of walks
42. Pyworthy Parish Council contact details & latest meeting summary
43. The John Sanders Park Trust Draw 2025
44. Church Patronal Festival
45. Local Business contacts list
46. Sponsor's page
47. Save your stamps for Hedgehogs & Rural Transport Service
- 48/49. Mike Godfrey's views on Renewable Energy & June Anniversaries
- 50/52. May Nature Notes series
53. Sponsor's page
54. Dates for your Diary
- 55/56. Sponsors page



WHO'S CELEBRATING THIS MONTH?



BIRTHDAYS

JUNE

- 2nd Theresa Shipp
- 3rd Emma Heard, Peter Ross
- 4th Adele Nosworthy
- 5th Robert Heard
- 6th Clare Buse
- 7th Carol Gowing
- 10th Aiden Gerry, Elsie Bromell
- 12th Chris Powell, Bob Gelder
- 13th Thomas Martin
- 15th Michael Chandler, Jaqi Edwards
- 16th Kirsten Chandler-Ross, Paula May
- 21st Dawn Piercey
- 24th Bryn Ward
- 26th Becky Kirkwood
- 27th Matilda Goldsmith
- 28th Brynley Langman, Simon Meredith & Val Basson
- 30th Elliot Jones



Community Birthday list

New Residents of
Pyworthy Parish, please
feel welcome to add your
birthdays to our
community list.

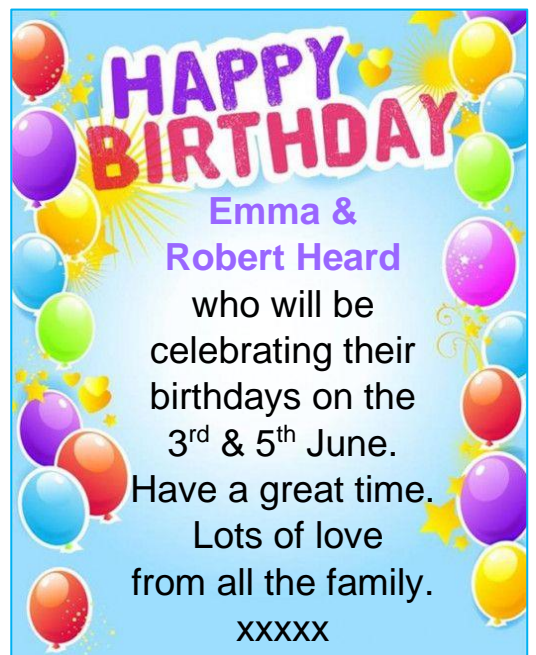
SPECIAL BIRTHDAYS AND FAMILY OCCASIONS



Emma Heard

**Happy Birthday to
my Mummy,**

**Lots of love from
Evie. XXXX**




United Benefice of Holsworthy

Rector: Revd Alison Hardy, Churchwarden: Alison Davies & Liffy Lowes



Benefice Services for JUNE

<http://www.holsworthybenefice.org.uk/services/benefice-calendar/>

Worship and Prayer in the Holsworthy Benefice – JUNE 2025				
Date	Bridgerule	Holsworthy	Pyworthy	Hollacombe
Sunday 1 st June	11.00am Sung Eucharist	9.30am Sung Eucharist	9.30am Family Service	9.30am Mass
Sunday 8 th June	11.00am Morning Prayer	11.00am Sung Eucharist	9.30am Sung Eucharist	3.00pm Evensong
Sunday 15 th June	-	11.00am Sung Eucharist 3.00pm LYCIGS	9.30am Sung Eucharist	9.30am Mass
Sunday 22 nd June	11.00am All Age Eucharist	11.00am 	9.30am Morning Prayer	-
9.30pm – All Age Service at Pancrasweek				
Thursday 29 th June		7.00pm Sung Eucharist	9.30am Morning Prayer	9.30am Joint Sung Eucharist

Church Bookings

To book a Wedding, a Christening, or a Funeral, or for anything else, please contact: Revd Alison Hardy, email: reverendalisonhardy@gmail.com

Tel: 07780295752.

Benefice administrator:

Libbi York – email:

Holsworthybenefice@icloud.com

Tel: 07717750198.



Please keep our beautiful graveyard clean. Please pick up after your dog.



Pyworthy Village Hall News

Martin Brennan, Chairman

Annual General Meeting

Many thanks to all who attended our AGM which was held on Wednesday the 23rd of April. As with previous years very few nominations were received, and the following were re-elected to represent the Hall for the coming year 25/26

Chairperson Martin Brennan

Vice Chair Angela Skinner

Treasurer Janette Moore

Secretary Janet Grant

Safeguarding Officer .. Angela Skinner

Marie Heard has also agreed to continue her role as our Booking Clerk.

My sincere thanks to all who have agreed to continue in their present roles, for their commitment and continued support.

**Pub Night this Friday the
30th of May 'Play Your
Cards Right' jackpot is now
£160 + you could be the
Lucky One!!! 'You gotta be
in it to win It'**

**Potters Fish n Things
Tuesday 17th JUNE
2025, 4.30pm-7.00pm**

Acoustic Panelling

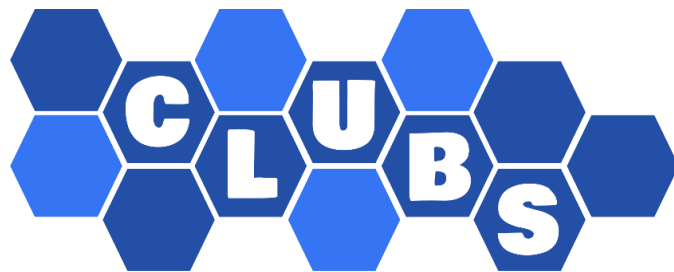
As some of you may be aware that through our own Fund-Raising efforts, we recently had acoustic panels attached to the ceiling of the hall at a cost of £3600 approx. The whole project has proved to be money well spent. With results showing much clearer audio, creating a more comfortable and pleasant environment for all to enjoy.

**'Yes, The Echo Has Reduced
Significantly'**

It is now our intention to replicate the same in the Skittle Alley. The total budget for the project is estimated at £2600.00. This includes the cost of purchasing and installing the Acoustic Panels as well as any necessary maintenance and upkeep. In essence, we are **seeking your support** to cover the costs of this project. Your support will be instrumental in helping us achieve our goal of creating a better acoustic environment for our community. If you feel you can help, **'make this project a reality'**, please feel free to either contact myself or any member of the committee, for further details. from you!



**See page 32 for easyfundraising.
How you can help our Village Hall
while you shop online.**



What's on at the Pyworthy Village Hall.....

Village Hall Pub Nights!



This month our Social Evenings are:

Fridays the 6th & 20th
JUNE!

We look forward to seeing
you All.

**Doors/Bar Opens
at 7pm until late.**

Everybody is welcome, come
along and have a good time.



Dates for your Diary.

Village Hall Meeting

Our next meeting is on Wednesday
18th June at 7.30pm.

Please feel welcome to join us.

Mondays: Line Dancing Club:

Complete Beginners:

5.30pm – 6.30pm

Beginners/Improvers,

6.30pm – 7.30pm

Intermediate, 7.30pm -9.30pm.

Tuesdays: Rural Art Group,

2.30pm – 4.30pm.

Returns on the 9th September

Tuesdays: Line Dancing Club,

Intermediate, 7.30pm -9.30pm.

Tuesday evenings: Men's Skittles
Team. Playing at home & away.

Wednesdays: Beginners Ballroom
dancing & Latin class, including
Sequence dancing 7.30pm – 9.00pm.

Thursdays: Gill's Golden Gang,
10.00am – 11.00am.

Thursdays: **Coffee Mornings** –
1st & 3rd Thursdays of each month,
from 11.10am. Everybody welcome!

Thursdays: **Creative Craft Club** –
2nd & 4th Thursdays of each month,
from 2.30pm until 4.30pm.

Sundays: **Children's Ballroom and
Latin Dance Class** –
10.00am until 11.00am.

**Please see club adverts throughout
the paper, for contact details.**

Upcoming Events at the Village Hall

Dates for your Diary!

Friday 3rd October 2025

An evening with **Paul Rendell** detailing the making of “**War Horse**” and many other films made on **Dartmoor**.

Saturday 1st November 2025

Live music event “**Not the Cowboys**” A rip roaring party band are coming to Pyworthy.

Friday 19th December 2025

A pre-Christmas party with “**Joy Machine**” playing music from the 60s to modern day Pop.

**Watch This Space, further
details to follow!**

ENTERTAINMENT

WELCOME
to the *neighborhood*

A **BIG** Pyworthy Welcome goes to our newest residents!

**We welcome to Pyworthy
Village:
Robert and Finley Fletcher.**



**DOGS TO BE
KEPT ON A LEAD**



**PLEASE
NO FOULING**

Pyworthy Rural Art Group **Pyworthy ART**



**Our Annual Art Exhibition will be held in the Church
on the 19th & 20th July, part of our Patronal festival.**

A date for your diary.

Art classes will return on the 9th September.

**For further information contact Janet
Grant Tel: 01409 259356**

Join Gill's Golden Gang

**Strength & Balance Exercise Class
for the over 55's!**

Held at:

**Tuesday: Holsworthy
Scout Hut
10.30am to 11.30am &
12 noon to 1.00pm.**

**Thursdays: Pyworthy
Village Hall
10.00am to 11.00am.**

**Halwill Baptist Chapel
Hall
12.45pm to 1.45pm.**

**Contact Gill Aston on: 07854677784
for more information.**



VILLAGE HALL COFFEE MORNING GROUP

**Come along and join us at
11.10am on the 1st & 3rd
Thursdays of each month.**

**Meet new friends, enjoy a coffee,
and have a good chat.**

**For more information phone:
Brenda on: 01409 253015 or
Marie on: 01409 254924.**

Now held in the main Village Hall.



**NEW MEMBERS ARE
VERY WELCOME!**

My Electricity Industry Recollections

Episode 5

How is Electricity made

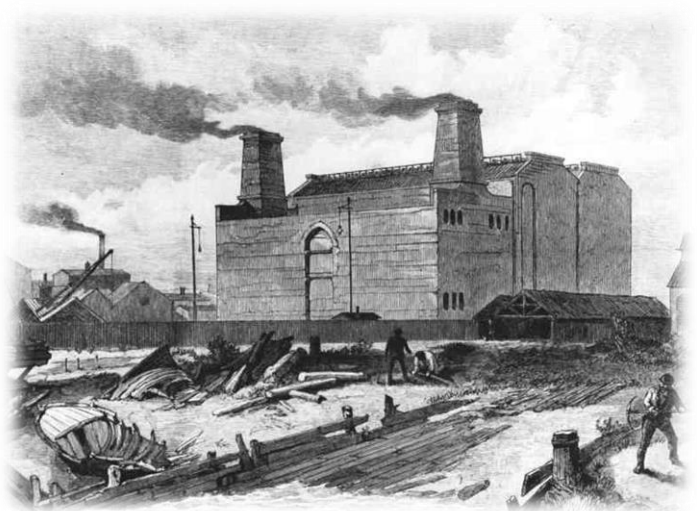
By Mike Godfrey



You will have gathered from the previous episodes that we gradually learnt how to make useful electricity by rotating a magnet or an electro-magnet inside a cylinder formed by coils of wire and to control it using conductors inside insulation to send it to where it was needed via a means of switching it on and off. This sparked many small generators to be constructed, using hydro, wind or reciprocating engines to power them, supplying small communities such as Godalming in Surrey and Holborn in London in the late 1800's. There are many more examples of these very small power plants having an output of a few tens of kilowatts at most. Electricity soon became the must have thing for the Industrial, Commercial and Domestic markets, particularly after the electric motor and forms of electric light bulbs were invented. The majority of the electricity being generated was direct current (DC) and so the distribution system to the factory, offices, shops and houses was also DC, normally around 110 volts but there were many variations. The reliability of the electricity supply was quite poor due to plant breakdowns or being unable to cope with surges in demand, as generally there was no spare capacity or alternative backup supply. With small power plants it was very inefficient and costly to have a spare generator sitting there just in case. Therefore, generally it didn't happen.



The demand for electricity continued to grow and in 1889 Deptford Power Station opened with a capacity of 800kw. This is thought to be the world's first high voltage power station and was the first to generate alternating current (AC) electricity. This made it possible to generate at 2500 volts and via a transformer distribute electricity at 10,000 volts, making it possible to send electricity over much longer distances, in fact all the way from Deptford to the Grosvenor Galleries in Bond Street, London. It was owned by the London Electricity Supply Corporation and designed and built by Sebastian de Ferranti who was responsible for much of the electrical development in the Country. In fact, Ferranti's system requiring 10,000 volts at the



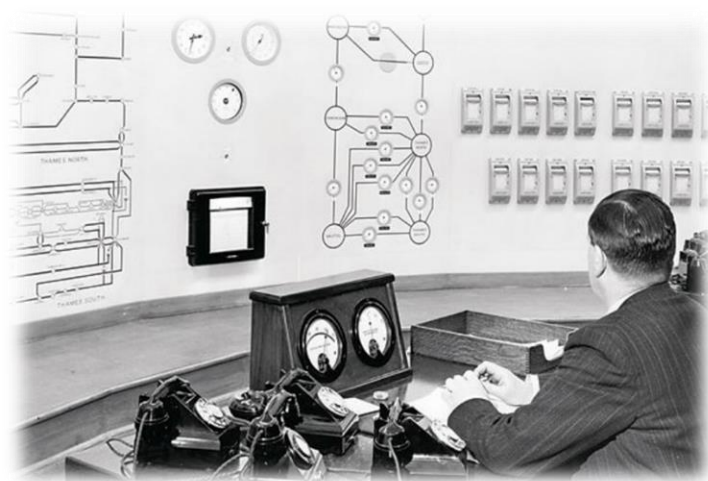
The East Deptford Power Station

continued on page 11...

How is Electricity Made continued

Grosvenor Galleries meant they needed to generate at 11,000 volts at the Power Station, in order to send the power down the line. It still remains our principal distribution voltage to this day. Subsequently many other Power Stations were built serving many cities and towns around the country but there remained the fundamental problem of covering breakdowns or extra high demands. In order to improve security of supply without impacting too much on efficiency, local power stations began to join together with 11,000-volt inter-connectors. This enabled them to run the most efficient plant at any one time but also provided the flexibility to cope with breakdowns and surges in demand. In fact, this happened in Holsworthy. The Company that owned the diesel generating plant here also owned diesel generators at Okehampton and Hydro Pelton Wheel driven generators at Mary Tavy on Dartmoor. They too joined these three Power Stations together, which improved security of supply and enabled the much cheaper plant at Mary Tavy to supply some of the electricity to Okehampton and Holsworthy. At times of low water flows at Mary Tavy the diesel generators at Okehampton and Holsworthy could help out the electricity demand on Dartmoor. A while ago I had occasion to visit Mary Tavy Power Station, as a ex-colleague of mine had become the Manager of the three Devon Hydro plants at Morwellham, Mary Tavy and Chagford. The same equipment had been operating in Mary Tavy since 1931 and was still in very good working order. However, to

qualify for an EU grant at the time, they insisted that the Pelton wheels be renewed as they would be worn and inefficient after about 70 years of service. The Manager insisted that they were okay but nevertheless they were replaced at £75,000 each, total cost £225,000. When the new ones were tested the efficiency of the plant had not changed. My ex-colleague, not being a great fan of bureaucracy, had one of the old ones mounted on a pedestal outside the front entrance, so that when the EU members visited he could show them how they had wasted £225,000.



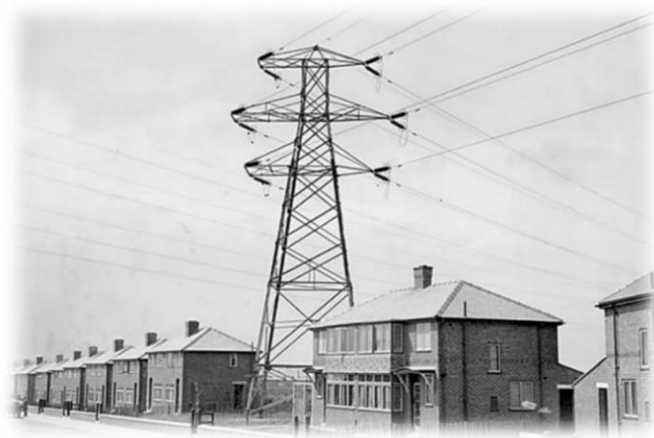
Above: Early CEB National Grid Control Centre

The Holsworthy Power Station that I mentioned earlier, was not the first to provide electricity to Holsworthy. A much earlier plant was installed in 1910 in Church Lane, the remains of which can still be seen. It was replanted several times and by 1929 it reached an output of 104kw. It was absorbed by the West Devon Company who eventually built a new plant down the lane opposite Bodmin Street. The early trials of linking power stations together was seen to be very successful and in the early 1930's the Central Electricity Board, having

continued on page 12...

How is Electricity Made continued ..

been formed itself by the Government in 1926, to bring some uniformity to the Countries electricity supply systems and voltages. They began to devise plans for a national grid system still based on Ferranti's 11,000 voltage (11kV) but because of the anticipated demand for electricity and the improvements in electrical insulator materials it was decided to go with a multiple of Ferranti's voltage producing firstly 33kV systems then 66kV systems and by 1935 they had settled on 132kV as the main national grid voltage. Together with the now very familiar twin circuit grid towers (pylons), they could transmit over a 100,000 kW between Power Stations and Sub-stations used to send the power to cities and towns.



Early 132 KV grid tower

Next time we will look at what happened when the demand for electricity was doubling every ten years and I was involved first hand in dealing with the problems that arose virtually on a daily basis in trying to build enough Power Stations to ensure that the electricity kept flowing.

Holsworthy History Society

The May meeting of Holsworthy History Society welcomed the Portreeve of Holsworthy Mr Richard Brown who gave an interesting & informative talk on the Court Leet, its history from before Saxon times to the more jovial meetings of today & brought with him pictures etc relating to these events. He was excused from wearing his ceremonial robes due to the warm weather. Mr Robert Paterson gave the vote of thanks.

The next meeting will be on:
June 12th at 7pm in The Manor Suite, Memorial Hall, Holsworthy, when Mr Mike Greenaway will be giving a talk on the nearby village of Tetcott.

All are most welcome to join us.

For more information about the History Society contact:
holsworthyhistorysociety@gmail.com

Margaret Stacey



Pyworthy Website Now Live
www.pyworthy-parish.co.uk



Pyworthy MOT Ltd



Typical opening hours depending on school times and holidays.

Monday: 9.00am until 1.00pm
Tuesday: 9.00am until 4.30pm
Wednesday: 7.30am until 4.30pm
Thursday: 7.30am until 4.30pm
Friday: 7.30am until 4.30pm or 7.30am until 1.00pm.

For all your servicing and general repairs, MOTs and MOT work. M.O.T.s can be booked 30 days in advance of expiry, so booking early can catch and give time to repair, unknown faults and problems.



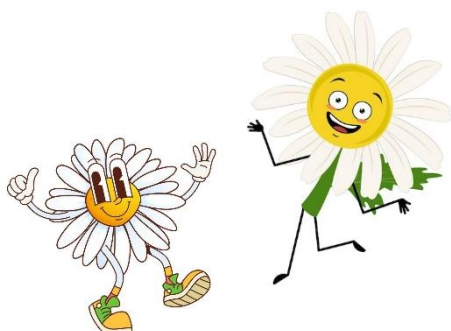
Call Simon - Tel: 01409 254275

Courtesy car available.

Line Dancing!



New Members welcome.



**For more information call Brenda
on: 01409 253015**

Line Dancing Classes

Our Line dancing classes are held on: **Mondays** in Pyworthy Village Hall.

Complete Beginners:
5.30pm – 6.30pm.

Beginners/Improvers:
6.30pm – 7.30pm &

Intermediate level:
7.30pm – 9.30pm.

Tuesdays: Intermediate level,
7.30pm – 9.30pm.

All classes cost just £5.

Come and join us!

Evelyn's Walks Update

By Evelyn Sharman,
Group Organiser



Right: A most enjoyable walk was had by Evelyn & her group of fellow walkers, in the Milton Damerel area in May.

On Monday 12th May, we met in the car park by the Parish Hall in Milton Damerel. Looking back in my diary, we hadn't walked in this parish since 2022. I'm not sure how this came to pass but I was reassured that Mike Jackson & Ann Poole were with us to lead the way. We turned right from the car park into the lane & then joined the permissive footpath on the left by the right-hand bend. The carpet of bluebells was an absolute joy to behold. Not many people would remember how we used to scramble up the bank in an ungainly manner. Thankfully, steps were installed some years ago which made our ascent less challenging & more dignified. We then had the benefit of the wooden boardwalk which not only enabled us to admire the bluebells without treading on them but also to pass over the stream without getting our feet wet. As we passed through the galvanised gate into the grassy field, I mused on a previous walk when we encountered inquisitive heifers. One in particular had shown an interest in my rucksack which had caused some

hilarity as I was absorbed in helping people over the stile & oblivious to what was going on over my shoulder. Would you believe that just as we arrived at the gate which has replaced the stile, we were joined by a group of inquisitive heifers? We followed the footpath which took us through the beautifully maintained cemetery & we took the opportunity to enjoy the coolness of the Church. We were fortunate to have the company of Mike & Ann who were able to point out interesting features. I had a conscience about encouraging people along knowing that we still had quite a walk ahead of us. We turned right & followed the lane towards Blackberry Farm Shop. It was very tempting to pop in for some sustenance, but we followed Mike along what is known as "Butterfly Lane". It was quite a steep & stony track so important to watch where we were putting our feet. At the bottom, we followed the footpath on our right, which effectively took us through a private garden. Previously, we had enjoyed

continued on page 15....

Evelyn's Walks group report continued from page 14....

watching goats frolicking, but I think there must have been a change of ownership since we last went that way. There was evidence of a new wooden footbridge & we emerged onto the lane by the beautiful mill building. There are still traces of where the mill wheel would have been on the brick work. We took a moment to enjoy the peace & tranquility before turning left up the hill. This brought us back opposite to the Church. We could have turned right & walked down the hill towards our cars, but Mike had kindly got permission from a local landowner, John Elliott, to walk around his fields behind the Chapel. It was beautiful following the route of the River Waldon & there were lots of damselflies to be seen. When we rejoined the lane, we turned left & by this stage we were getting a bit tired, so the hill was somewhat challenging. However, we plodded on & returned to our cars having completed a circular route of approx. 4 miles. It had taken us two & a half hours. Praise must go to the P3 volunteers who check the Public Rights of Way (PROWs) in Milton Damerel. The footpaths are so much easier these days since stiles have been replaced with self-closing galvanised gates; steps have been created to save scrambling on hands & knees; board walks & footbridges have been installed; & the routes are well marked. It was certainly a pleasure to walk in the parish & we mustn't leave it so long next time!



The next walk is scheduled for **Monday 9th June**. We'll be setting off from the **Village Hall in Chilsworthy at 10.15am**, which is slightly later than usual. If you would like any information, you are welcome to contact me.

**Contact information:
Evelyn Sharman**

Tel: 01409 259 848 Email:
evelyn.sharman@btinternet.com

MAY'S PYWORTHY POSER QUIZ ANSWERS:

1. Aspirin.
2. 1st frozen foods in Massachusetts, USA.
3. Light Bulb.
4. Laser.
5. Atom Bomb.
6. Barbed Wire.
7. Bicycle Tyres.
8. Dynamite.
9. Helicopter.
10. Alexander Fleming.
11. World Wide Web.
12. Graham Bell

How did you do? Well done!
Try this month's quiz on page 37.
Thank you the - Pyworthy Pilgrim.



Name: Marie Heard

Age: 58

Occupation: Holsworthy Electronics (later Meggitt), Mealtime Assistant, Pyworthy School; homemaking, raising children and grandchild care.

Place Of Birth: Barnstaple Hospital, the old one. First home: the family farm at Lower Whiddon, Beaworthy.

What is the best thing about living in Pyworthy?

It's a pleasant place to live and it's nice to be able to live with family here although sadly my Auntie, who lived in the village longer than anyone else, died last month.

What one thing would you change about Pyworthy and why?

Bring back the village school and toddler group, especially now I help look after a grandchild.

Describe yourself in three words:

Caring, friendly, family orientated.

How do you like to spend your free time:

With family and friends, doing art and crafts including card making. (Marie belongs to and is involved with many local organisations including the village hall where she is the bookings clerk and is a joint organizer and host of the village coffee mornings).

What one thing have you always wanted to do, try or learn?

Revisit Bannau Brycheiniog (the Brecon Beacons).

If you could meet anyone living or dead, who would it be?

The American film and television actor Carlos Irwin Estevez, better known as Charlie Sheen.

If you won a million pounds, what would you do with it?

Share the money with family to make sure they had no financial worries and have holidays without worrying about the cost.

Who will be selected by our roving reporter Bryony for the next Community Focus – could it be you? See next month's Pyworthy Post.

Community
Focus



Thanks go to Bryony Rylett for your research.

Humphrey Pullar Chimney Sweep

NACS Registered

- Professional Chimney Sweeping Service
- Full Brush & Vacuum Service
- Pots, Cowls & Bird guards Fitted.

All types of Appliances & Flues Swept & Serviced.

Traditional & Power sweeping Techniques

Chimney CCTV Surveys/Bird Nests Removed.



24 Hours Emergency Service

Call: 01409 240138 or

07984 406290



EVELYN SHARMAN

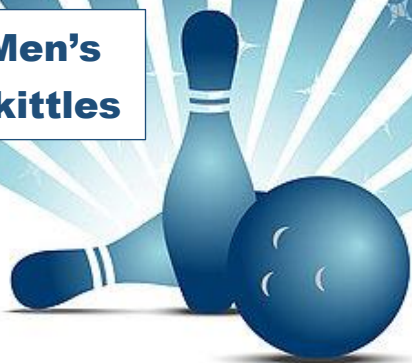
Professional Driving Tuition (DVSA ADI)

Telephone: 01409 259848

Mobile: 07885 352 082

Email: evelyn.sharman@btinternet.com

Men's Skittles



Men's Skittles!

Pyworthy has a Men's Skittles Team, which meet on Tuesday evenings. If you would be interested in joining them, please contact:

Andrew on 07531186466 or 01409 253509.

Training will be given!

Make a Donation to the Pyworthy Post, It's Simple!

If you would like to give a donation towards the printing cost of the Pyworthy Post – see details below.

BACS details:

Account number: 01086227

Sort code: 40-24-25

Account name: Pyworthy Post

Type of account: Community account.

Please email me your name and address for a receipt.

A big thank you to all those who have already donated to the cost of printing the paper, which is appreciated.



Glebe House Cottages, Bridgerule

www.glebehousecottages.co.uk

Telephone: 01288 381272

Accommodation

6 luxury self-catering cottages all recently refurbished to a high standard.

Beautiful 5 acre site with a huge amount of facilities for all ages including:

- ❖ Heated outdoor swimming pool
- ❖ Tennis court
- ❖ Stunning formal gardens
- ❖ Cellar bar & games room
- ❖ Children's play area,
- ❖ Woodland walk
- ❖ Hammock area
- ❖ Croquet
- ❖ Firepit
- ❖ BBQ's plus plenty more.

10% discount for friends & families of local residents.



Party Venue

Why not host your next party at Glebe House Cottage?

We have so many options to make your party stand out. Make it a party you won't forget!

- ❖ We can host parties from 15 guests up to 200.
- ❖ Formal garden parties with a marquee
- ❖ Celebrations in our secret cellar bar
- ❖ Fun tailor-made children's parties!
- ❖ "Have a splash with a pool party!"
- ❖ "Birthday, Anniversaries, Christening or any celebrations!"



GARDENING MATTERS from CRINACOTT

By Mike Godfrey, keen gardener

This spring has been the driest for many years. The weather has been idealic with enough moisture in the ground to keep everything growing with lush fresh green growth in the hedgerows, shrubs and trees. The grass also seems to have grown green and lush; we seem to have long grass everywhere. I have tried to only cut grass to provide access ways this year, leaving the rest to allow nature to do its thing. It doesn't look so neat and tidy, but it is a real pleasure to watch all the butterflies, bees and other insects doing their thing everywhere that we go on the farm. We even had a Muntjac fawn born in the long grass close to the farm buildings. This May has been outstanding weather wise, let's hope that June will be the same, they are my favourite months and always seem to go by in a flash.

It is now over 3 years since I embarked on my project to make my Orchard and woodland more wildlife friendly, thinking it would be straightforward and easy with the knowledge I thought that I had in my head. It has however, proved to be far more difficult than I ever imagined. My half-hearted attempts to achieve a wildlife friendly environment at the beginning didn't do me or the wildlife any favours but things are gradually improving, and I have come to terms "that Rome wasn't built in a day" as they say and I have learnt to be more patient with my expectations. Perhaps it has been a good lesson for me in my nonstop life activities. I have

now planted out a whole range of wildflowers, which I had grown in the polytunnel over winter. The plants are big and strong and should hopefully thrive in their battle with the grasses. My plan is to try and develop the wildlife ponds this year and create areas which can actually retain water. My initial plan to construct a pond on what I believe to be a spring has failed miserably so far, as it appears that although the ground seems to be wet all the year round the sides of pond are porous and allow the water to drain away. So, it's looking like a liner unless I can find the time to dig some clay and puddle the sides. However, it now has a lot of insect and plant life, so I may be reduced to keeping it topped up with water from our well.



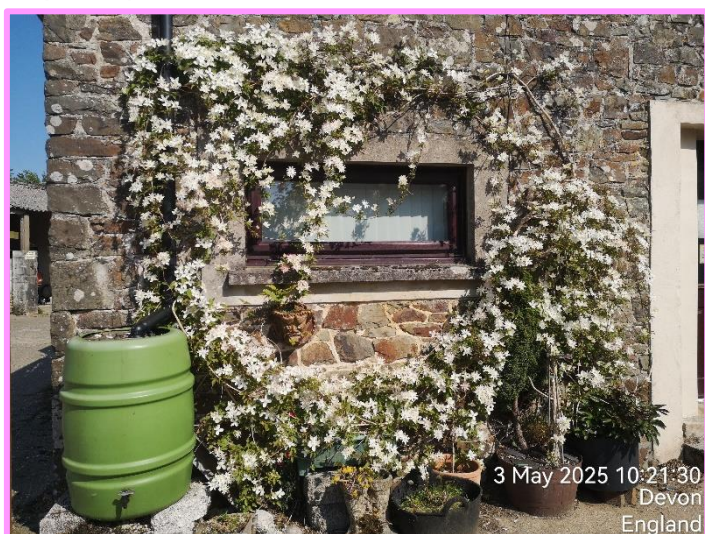
Above: The Crinacott Farm apple blossom looking beautiful this spring

Two years ago, I found that slugs and snails don't seem to attack Begonias, so last year all I grew flower wise was begonias and we had a wonderful long-lasting display. Hence, I am repeating the same this year for a trouble-free floral display. For the last two years I have had terrific trouble to germinate and grow beetroot and parsnips.

continued on page 20

GARDENING MATTERS from CRINACOTT
continued from page 19.....

This was using seeds from different suppliers trying to grow them in different areas and even trying to get them to germinate in trays and pots, without very much success. I even spoke to Toby Buckland on the local radio Sunday morning gardening programme, and he couldn't really suggest anything that I hadn't already tried. The strange thing is that some of the seed that was left in the ground did eventually germinate in late autumn and continue to grow very slowly through the winter in the polytunnels and during the spring produced some reasonable sized beetroots. Unfortunately, they were inedible because the plants were then going to seed, and the beetroots were like lumps of wood. However, the good news is this year I have sown more beetroot seeds, and they have all germinated and are growing normally. Has anyone got any suggestion because it is a total mystery to me.



Above: How pretty the Clematis at Crinacott Farm looks this spring

Jobs for this month, if you haven't already done them:-

- Prepare your seed beds as the drier weather allows and start to sow seeds such as peas and beans as the soil begins to warm up.
- Sow salad crop seeds in pots or trays if you have somewhere warm, light and airy to keep them, which is frost free. Try not plant all seeds in one go, sow to provide continuity of supply rather than have the whole crop ready at the same time, so a lot will inevitably go to waste or the compost bin.
- You can also sow vegetable and some flower seeds in pots or divided trays to get a head start. Courgettes, leeks, sweet corn, runner and other beans as well as flowers like sweet peas and other annuals.
- Plant out Runner Beans, and other beans, Courgette, Leek, Sweet Corn and flower plants now the risk of frost has diminished, we hope.
- If you are planting out sweetcorn, remember that it is wind pollinated so best planted in blocks rather than in rows to improve the chances of successful pollination.
- Sow successional crops of peas, carrots, beetroot and other salad crops.
- Continue to earth up potatoes as the shoots come through.
- Start to plant out summer bedding plants in beds, containers and hanging baskets, don't forget to water them regularly and feed them once a week.

Jobs for the month ahead continued on
page 21



Jobs for this month continued from page 20 ...

- Also plant out previously sown sweet peas when they reach about 6 in high, pinch the tops out to encourage bushier growth and more flower. Pick the flowers regularly to create more flower growth.
- If you planted early potatoes, remember to earth them up as the leaf shoots appear. This will encourage the production of more potatoes and protect them from sunlight, which turns them green and poisonous.
- Why not join me in reducing the amount of grass that is mowed and help to create some more wildlife friendly habitat. This will also help young amphibians to survive, particularly close to ponds and wet areas.
- Be careful when trimming hedges and shrubs because birds could be nesting and they need all the help that we can give them to help them and their youngsters to thrive.
- Watch out for slug and snail damage, especially around dusk on damp days. Encourage frogs, toads and ground beetles to deal with them or move them to your compost bin/area, where they will be happier munching on the rotting vegetation.
- Finally, just be cautious, although we have had some pretty warm days and plenty of sunshine there is still the possibility of pretty cold nights at this time of the year, which could affect your more delicate

plants, temperature below 7 degrees C can affect them.

When the Pyworthy Gardening Club ceased its activities in December last year there was a sum of money left in the bank account. The membership who attended the last meeting decide it should be given to Charity. There were two charities nominated South West Children's Hospice and an Alzheimer's charity. The money will be equally divided between the two.

If anyone needs to contact me, then please contact me on 01409 253401 or 07798 647041 or by e-mail at:
mikecrinacott1@gmail.com.



St Peter's Fair
Saturday 5th July -
Saturday 13th July 2025
Old & New Traditions
for the Whole Family.



**Keep saving your
used stamps!**

Pyworthy Environmental Group (PEG) A New Chapter

This group was established to help preserve and improve the environment around Pyworthy. Clearly the fight against covering our farmland with industrial glass and steel simply because we happen to have a substation in the village was an initial and important focus – and will remain so if necessary moving forwards.

However, we also want to encourage all forms of environmental protection. Living as we do in one of the bottom 10% of biodiverse countries in the world, we are left with only approximately 50% of our original biodiversity. Obviously, this is largely down to pollution and land use. We can all play a part in addressing this by small or large changes in habits or by simple means to encourage nature wherever possible. This is what PEG would like to concentrate on for the village.

A meeting was held in early May at which ideas were floated for a number of projects that we would hope to roll out over the next few months and years. It was felt that it would be extremely useful if we could start with an idea of what we already have. We want to ask anyone who has an interest to list anything that they can – either in their garden, fields or on walks. There are great apps to identify birdsong and wild plants and even bats if you have them in a shed or barn.

We will find a way to collate and record information but please do get in touch if you are interested.

From there we have ideas around

barn owl boxes, tree planting, water vole introduction, butterfly breeding, visiting speakers etc that we could roll out.

It seems to us that this would be a good use for some of the promised monies that we await from the solar installation at “Derril Water” and so we will be creating proposals to apply for some of that.

Butterflies are seen less than previously. These are not only beautiful indicators of healthy biodiversity but also play an important role in pollination and are a food source for other wildlife. It is interesting to visit this site: wwb.co.uk to learn more or even to purchase and see how well you can breed them in captivity for release. Marsh Fritillary, Ringlet butterflies and Peacock butterflies are amongst many others that are all available now and would add to your garden. Help with this can be sought from Reg Godwin who has been breeding butterflies for many years. If you may be interested in doing this with some financial help, then please let Reg know so that we can get an idea of the level of funding required in this first stage.

We hope this gives a flavour of our desire to improve the natural side of our fantastic village. Please feel free to get in touch with any of us to discuss more, to join us or for help with any environmental project that you may have. We hope that we have already amassed a significant breadth of knowledge and skills in this area, but we would welcome input from all other like-minded people in our parish.

Continued on page 23...

Pyworthy Environmental Group continued from page 22 ...

Please initially make contact by email but obviously we are very happy to chat on the phone or meet up in person. We would love to hear from you.

We are:

Adrian Oliver:

kajoliver@btinternet.com

Mike Godfrey:

mikecrinacott1@gmail.com

Bill Stuart:

billstewartartist@gmail.com

David Hillebrandt:

davidhillebrandt1@gmail.com

Mark Marriott:

mark@strawberrybankdevon.co.uk

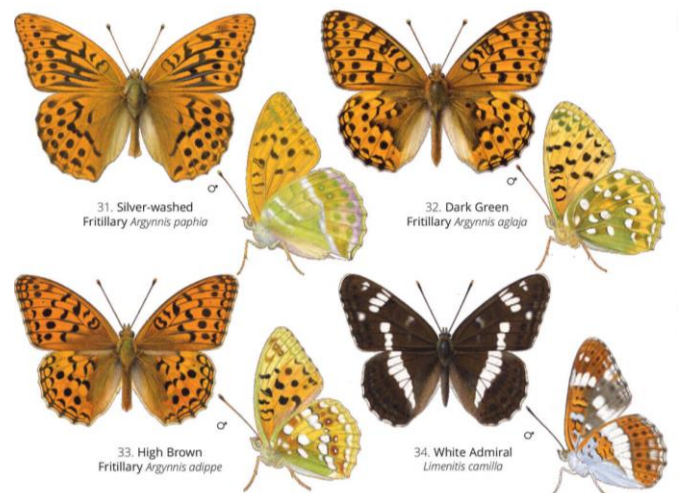
Heather Darwin:

scotlandfm@yahoo.com

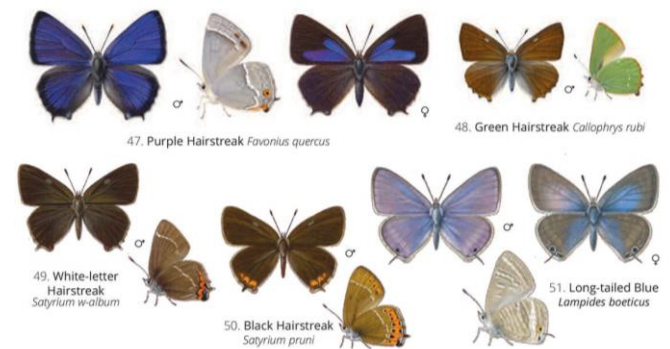
Reg Godwin:

rlggodwin@gmail.com

In addition, Kit Hepple has been hugely supportive in his role as Ward Councillor and is fully behind this initiative to maintain and improve the environment in which we all live.



..... Browns, emperors, vanessids and fritillaries *Nymphalidae*



..... Hairstreaks, coppers and blues *Lycaenidae*

Above: British butterflies at risk!

If you care about our local environment, please get in contact now!

**Coming to the Village Hall on
Tuesday 17th JUNE!**

REMINDER - Potters Fish 'n' Things

By popular request, Potters have agreed to set up shop in the Village Hall Car Park, 4.30pm-7.00pm every 3rd Tuesday of each month, for the foreseeable future.

To pre order, head to their website:

www.pottersfishnthings.co.uk

OR alternately just turn up on the night.



Other food available

Holsworthy Library

Tel: 01409 253514. Email: holsworthy.library@librariesunlimited.org.uk

www.discover.librariesunlimited.org.uk

Also, Holsworthy Library on Facebook and Instagram

WHAT'S ON AT HOLSWORTHY LIBRARY – JUNE 2025



Library News!

- **Creative Workshop** with the Resource Centre, Coiled Fabric Pots, Thursday 5th June – 10:00am–12:00pm. Booking essential, £2
- **Bounce & Rhyme**, Thursday 5th, 12th, 19th & 26th – 2:15pm – 2:45pm
- **Community Plant Swap**, Saturday 7th–14th – during opening hours
- **Lloyds Bank Community Banking**, Monday 9th & 23rd – 2:00pm–4:00pm
- **Ruby Country Creative Writing Group**, Wednesday 11th – 11:00am–12:00pm. Limited places, booking essential.
- **Home Education Social Group**, Monday 16th – 10am–12pm
- **Gardening Cuppa & Chat**, Wednesday 25th – 2:00pm–3:00pm. Everyone welcome.
- **Lego and games** for children. Every Saturday – 10am–12pm
- **Photography competition** for adults. Running throughout June. Theme, “Nature”. See posters or ask staff for details.

Holsworthy Library - There are lots of exciting things happening at your local library. In addition to a great range of books you can use your library membership to access free eBooks and audiobooks via the Borrowbox app. We also have free public computers and Wi-Fi as well as printing, copying and scanning facilities. It is free to join the library, and we are a friendly, welcoming space open to all. Free hot drinks are available, and people are encouraged to use the library as a place to relax, work and socialise as well as to find their next great read!

Opening Hours:

Monday 2pm–5pm

Tuesday Closed

Wednesday 10am–6pm

Thursday 10am–5pm

Friday Closed

Saturday 10am–1pm - Sundays Closed.



CHURCH NEWS

By Liffy Lowes, on behalf
of St. Swithun's Church



Can you believe we're almost halfway through the year? I was reminded of this the other day, not what I really wanted to hear as I always feel the second half of anything always goes faster than the first! At least summer seems to have made an appearance this time! But has anyone seen swallows? I have seen them but in ones and twos rather than a flock, it's all a bit worrying really I think.

Another quiet month for St Swithun's. Most of us feel that numbers attending is rising slowly, which is always good, but it would be wonderful if we could encourage more young people to come. If you are shy about coming on your own, then bring a friend. We are really not scary people, and we certainly don't want to put anyone off coming. Just come, you will certainly get a good welcome, and someone is always on hand to give out service sheets and hymn books; if you are unsure how the service runs, then ask; someone will surely come and show you. We would love to see some new young faces. I have another reason for young people coming into church; most of us who regularly attend are getting a bit long in the tooth and we really need new faces. Why not give it a try, you may even get hooked! And we have a wonderful rector, always ready to sit and talk if you would like that.

Next month we have our Patronal Festival, and we hope many of you will be able to come along and see the Flower Festival this year. The theme is "Childhood Memories" and promises to have some wonderful displays for you to admire. There will also be the Art Display for you to see and perhaps wish you were able to paint as well as the artists. These artists are all local people; it always amazes me that so many talented souls could come from our part of the country. So please come along, enjoy the displays and then partake of the scones and cakes.

Alongside the Patronal Festival, we have our Gift Day over the same weekend. A church costs a lot of money to keep going, we have to raise over £5000 per year, which helps to fund clergy, plus all the usual bills which crop up. So, we would ask you to please be generous and help to keep our lovely old church in good order, so that future generations can come to worship there as we do now. We have several projects in the pipeline which all require money, the clock is one thing on the agenda, the tower roof requires a lot of attention and one of the stained-glass windows is to be removed next month for repairs.

I think that sometimes we do not appreciate the beautiful countryside we live in, the temperate climate and the peace which we enjoy. Other parts of the world are not so fortunate. I wish that those countries at war would realise that peace does not come out of convict, starvation or sheer cruelty, but by sensible, constructive meetings. I wish this were so, sadly at present it isn't. I do hope that one day we will see peace for all.

Update on Derril Water Solar Park

Works are continuing apace at Derril Water Solar Park with the project expected to start operating in the summer.

The grid company, NGED, also referred to as the DNO – Distribution Network Operator, has been fitting out the building on site that contains their equipment. The adjacent structure – the ‘customer sub-station’ is also being fitted out with transformers, panels, power quality monitoring equipment, signalling systems, grid export panels and backup power systems.

All seven transformers/medium voltage substations have now been installed around the site and the vast majority of the mounting structures and solar panels are in place.

The good weather we have been experiencing has made the remaining civil works far easier, with much less mud being carried onto the roads.

Following some key tests and cable connections that are required for the DNO, we are now preparing for the commissioning phase.

By Simon
Peltenburg on
behalf of the
Derril Water
Solar Coop



The Board of the Derril Water Solar Coop continues to be closely involved with the project on behalf of the Coop's members. This is greatly helped by the expertise of RES who are providing continuity to this exciting project.

A new website has been set up at <https://derrilwater.com/> which will be a key resource for the Coop members.



**Above:
Panel
inspection**



**Left: Aerial
view of the
site looking
north to
south**





Shapland Accountancy

We are a local long established family run firm with over 40 years experience. We provide Accountancy & Bookkeeping Services throughout Devon and Cornwall.

From small to large companies, Sole Traders, Partnerships, Limited Companies whatever you need, we can help.

Bookkeeping, Tax returns, Payroll, VAT or just advice, contact us to see what we can do for you.

Email Us: admin@shaplandaccountancy.co.uk



Find us on
Facebook



WoofWorthy

SECURE DOG FIELD

A SAFE SPACE TO HAVE FUN WITH YOUR DOG!

What we offer

- 1 acre field in Holsworthy, Devon
- Beautiful, quiet setting, no nearby roads
- Hardstanding parking area in field
- Fun agility equipment & obstacles
- Long grass enrichment areas
- All weather walking track
- Fresh water available
- Space to run free
- Secure 6 ft fencing
- Exclusive booking

 www.woofworthy.co.uk 07887 094320



Bude Jazz Club

The Falcon Hotel, Bude.
EX23 8SD

Sundays 8pm – 10.30pm

**8th June – Zoe Lambeth's Vintage
Jazz Collective**

22nd June – The Jazz & Boogie Band

Members £10, visitors £14,
Students £5.

Enquiries email:

budejazzclub@gmail.com or
Phone Brenda: 01288361491



Facebook – Bude Jazz Club
www.budejazzclub@gmail.com

S. PETROC FESTIVAL

**Saturday
7th June 2025**

S. Petroc's Parish Church,
Hollacombe, Holsworthy
EX22 6NW

12 Noon
High Mass of S. Petroc
Celebrant & Preacher:
The Bishop of Oswestry
followed by Festival Picnic
Please bring your own picnic

2.15pm
Catechesis

3pm
Benediction of the
Blessed Sacrament

**Maureen and Milton's
Colourful Hawaiian Themed
Birthday Party
Saturday 21st June
at
Pyworthy Hall**

Dancing from 7pm to 10pm

Charity Raffle

*No presents please but
donations for the raffle very
welcome* 😊

Entertainment from award winning
Nikky Napier

All proceeds to Bude Sea Pool

BYO Nibbles and Drinks

Tickets £10.00

Call 07779695433

Everyone Welcome

Father's Day 2025 is Sunday 15th June!

What is Father's Day?

Father's Day is an annual event that celebrates fatherhood and the role of fathers in nurturing and guiding their children. It is a day to show appreciation for the sacrifices and efforts that fathers make in their children's lives. This celebration is marked by giving gifts, sharing meals, spending quality time together, and expressing love and gratitude through cards, messages, and other gestures. Father's Day is also a time to honour all father figures, including stepfathers, grandfathers, uncles, and others who have played a paternal role.

Happy Father's Day ...

... to all the wonderful supportive Dads
... to anyone who has lost their Dad or Father Figure
... to those who have strained Father relationships
... to all the amazing Step-Dads out there
... to a single Dad raising kids on their own
... to all the wonderful foster Dads
... to the new Dads adjusting to Fatherhood

... to anyone who can't be with their Dad, or just need a little extra love today.



Volunteers Needed to Establish a Community Pub

**FOR
SALE**

**VOLUNTEERS
NEEDED**



The Molesworth Arms, the pub in Pyworthy, is up for sale and the community would like to buy it and use it as a community asset. We already have lots of ideas to help the community all the way from Bude to Holsworthy including a warm hub in winter, a loneliness hub throughout the year and a not-for-profit community events venue. To do this we need a committee of volunteers who can give some of their spare time to fund raising, marketing, business planning, membership management and a whole host of other things needed to set up a community pub.

Sadly, last time we tried we only had a few volunteers from Pyworthy village itself who felt able to offer the project the skills it needs so we are looking for volunteers from the wider community to help. It will be a great opportunity to meet new people, learn new skills and contribute to the community, so if you are interested please mail info@pyworthy-parish.co.uk. More details are on the Pyworthy Parish website www.pyworthy-parish.co.uk.

HOLSWORTHY

VINTAGE & CLASSIC RALLY

& Family fun day

SAT 28TH & SUN 29TH JUNE 2025
 Saturday 10am - 5pm Sunday 10am - 5pm



Full size & Miniature Engines
Arena Events
Vintage Classic Tractors
Motor Bikes
Cars of all Ages
Dog Show
Live Music in the Marquee Friday & Saturday from 7pm
And so much more

Craft Tent
Licensed Bar
Refreshments
Kids Play Area
Arena Displays
ENTRY £5 KIDS FREE!



MORE INFO, SCAN HERE

 The Showground, A3072, Rydon, Holsworthy EX22 6JP
 ENTRY FORMS VIA FACEBOOK: HOLSWORTHY VINTAGE RALLY

 Find us on Facebook **Holsworthy Vintage Rally**



Pyworthy Parish Website Now LIVE!

The Pyworthy Post and other parish news and events are now online at: www.pyworthy-parish.co.uk. The website is continuously developing and we are always looking for new content and ideas, so please visit the website and feel free to contribute either through the links in the website or directly to info@pyworthy-parish.co.uk. You can also reach the website using the QR code.



Recent Thefts of Quad Bikes



A WARNING ABOUT LOCAL THIEFTS

Several Quad Bikes have recently been stolen in the Bude/Holsworthy areas. Please can all owners of farm machinery especially quad bikes be extra vigilant for any suspicious activity or vehicles and ensure they report such instances to the police. Make sure vehicles are secure, gates are locked, security lighting is operational and high value items are marked and photographed so they can be identified.

Message Sent By

Devon and Cornwall Police - Torridge Neighbourhood Team

Local Stove Supplier

CBL STOVES

The Showroom, Unit 5
Red Post, Bude, Cornwall
EX23 9NW

01288 381852
carl@cblstoves.co.uk
www.cblstoves.co.uk



- Stainless Steel twinwall flues
- Chimney Lining
- Iskoern Pumice lining
- Fireplace alterations
- Stove Installations
- Wood, Multifuel, Gas & Electric Traditional & Contemporary Stoves & Fires
- Chimney Rebuilds
- Slate, Granite & Glass Hearths
- Wood & Ceramic beams & surrounds
- Floating Shelves



Showroom Opening Hours:
Monday to Friday 9am until 4pm
Saturday 9am until 2pm

Call us now for a FREE no
obligation quote on:
01288 381 852

Website: www.cblstoves.co.uk
Email: carl@cblstoves.co.uk

Sign up & help the Village Hall



Help us raise
FREE donations
every time you **shop online**

How to sign up

1. Visit easyfundraising.org.uk
2. Search for Pyworthy Village Hall and support our cause
3. Raise FREE donations for us when shopping



Scan me

4,500 online sites will give us a free donation
when you shop with them - at no extra cost to you!



Over £34 million raised



1.9 million users

Read online at:
<https://pyworthy-parish.co.uk/>

and view the
paper in full
colour.

(don't use a
search engine)

**SPEED
LIMIT
30**

Holsworthy Food Bank

Donations are
always welcome to
help those in need.
You can donate
tinned food,
packets or boxes of
food.

Unfortunately, fresh
produce cannot be
accepted.

**Donations can be
left in the box at the
back of St. Swithun's
Church, Pyworthy,
which is open every
day. Thank you.**



Sunday 8th June

FREE ENTRY

Local farms participating are:

Blackberry Farm at Milton Damerel, EX22 7NP (5 miles away). Open from 10.00am – 5.00pm. Various events are planned throughout the day.

Deer Park Farm at Lockett Callington PL17 8NW (19 miles away). Open between 11.00am – 4.00pm.
Tractor tour 12 noon – 2.00pm.

For more details: farmsunday.org/visit-a-farm

The Royal Cornwall Show, Wadebridge

Thursday 5th - Saturday 7th
June 2025

For more information go to:

<https://www.royalcornwallshow.org>

Royal Cornwall Agricultural
Association

The Royal Cornwall Events Centre
Whitecross, Wadebridge, PL27 7JE
01208 812183
info@royalcornwall.co.uk



ActionFraud

Report Fraud & Internet Crime

0300 123 2040

CRIMESTOPPERS

0800 555 111

Call anonymously with information about crime



Torridge

District Council

Pyworthy Bin Collections



JUNE 2025 - Pyworthy Village, other villages may have a different collection schedule.

Black bag collection days are:

Friday 13th June

Friday 27th June

Recycling- Every Monday.

Boxes/Bags & Food Caddy

Weekly collection of 2 x boxes & 2 x bags. Weekly collection of food waste in caddy.

Garden Waste Collection dates:

Monday 9th June

Monday 23rd June.

For more information go to:

www.torridge.gov.uk

Or phone:

01237 428700





**Dates for your
diary can be found
on **page 54** this
month.**

Take a
breather here!



Creative Craft Club

The afternoon craft club is going strong. This takes place in Pyworthy Village Hall on the 2nd & 4th Thursday of each month – 2.30pm until 4.30pm.

A donation of just £2 towards the hall is all it costs!

Come along and join us, just bring your own craft project to do, & see what others are doing. Plenty of help available if you have a problem.

A great way to meet new people. We are a friendly bunch & love to chat.



Hi there Human Hedgehog Supporters!



Have to admit, we are both putting on a bit of weight around the middle just recently. Henrietta is recovering after the nuptials, the mini-Hogs are doing fine (and growing), I'm just a greedy slug hunter and one of our Clan was spotted & welcome in a garden at Shortlands recently, out for a late evening forage. That will mean a few less nasties to nibble your transplants!

Do keep those used stamps (UK or foreign) coming in - they really do help us, and it doesn't cost you a single penny. Thank You All!

Harry & Henrietta H.

DB WALLING



Cornish Stone
Wall Specialists

- Dry stone wall repairs
- Retaining dry stone walls
- Stone work with mortared joints
- Earth stone hedging
- Landscaping
- General construction & ground works
- Garden features

FREE QUOTES

Call Dan on

07968 996191



www.dbwalling.co.uk

WALLING | LANDSCAPING | CONSTRUCTION

J. Mansell 07896 945889

General Builder

General Building, Property Maintenance & Repairs

**Painting, Decorating, Plastering, Rendering,
Brickwork, Patios, Concrete, Foundations
Roofing, Carpentry & Joinery**

**Gutters, Plumbing, Drainage, Cob Conservation,
Limewash & Lime Plastering**

**Kitchens, Bathrooms, Chimney Lining,
Stoves & Garden Landscaping**

Jamescancott@gmail.com

Trigon Farm, Derriton, Holsworthy. EX22 6JU

Forthcoming Events & courses:

Pizza evening – 30th May

Guided Farm tour - 1st June

Flower arranging workshop 21st June (morning)

Romanian dinner – 21st June (evening)

Fresh flower wreath workshop – 19th July

Tomato Feast – 17th August

Preservation course – 6th September

Permaculture course – 28th September

Dried flowers wreath workshop – 11th October

Christmas wreath workshop – 29th November/6th December

Christmas table arrangement workshop – 20th December

Book today at:

<https://www.trigonfarm.co.uk/book-online>



Opening hours:

Tuesdays, 9.00am till 6.00pm.

Other day by appointment.

www.trigonfarm.co.uk

Call Al on Tel: 07988484069

More Useful Contact

numbers:



Holsworthy Food Bank:

Tel: 01271 377077

Holsworthy Community Fridge:

email

mtrudgill@dmatschools.org.uk

Samaritans: Tel: 116 123

Age UK: Tel: 0800 055 6112

Domestic Abuse Women's Aid:

Tel: 0808 2000 247

Domestic Abuse Men's Advice line:

Tel: 0808 8010 327

Childline: Tel: 0800 1111

Domestic Abuse

Helpline



Phone:

**0808 2000247 for free &
confidential advice.**

**More information available
online.**

If in danger phone: 999





Pyworthy Poser Quiz for JUNE

*Definitions – how many
do you know?*

1. AIDS
2. I.C.U.
3. PVC
4. RADAR
5. SONAR
6. DVD
7. PDF
8. WWW
9. CNS
10. bTB
11. CH₃CH₂OH
12. NaCl

The answers will be in
the next Pyworthy Post.



Pyworthy Pilgrim



ARTHUR W. BRYANT FUNERAL SERVICE

CAMELFORD
01840 214891

BUDE
01288 352282

HOLSWORTHY
01409 253000

INDEPENDENT FAMILY
FUNERAL SERVICE

MEMORIAL
MASONRY

OUR FAMILY CARING FOR YOUR
FAMILY FOR OVER 50 YEARS

PRE PAYMENT FUNERAL
PLANS

AWBRYANT.CO.UK
CARING@AWBRYANT.CO.UK



DOG FOULING/DOGS OFF LEAD

Following a number of recent and ongoing incidents of dog fouling in the churchyard and surrounding streets in the village centre, residents are reminded that dogs should be kept on leads and not allowed to roam unaccompanied.

Residents are asked to clear up after their dogs at all times.



**Pyworthy Parish
Council.**

Slimming World taste the *freedom*



Contact your local Slimming World Consultant
and join a warm and friendly group today!

NEW VENUE

Bude

Bude Rugby Club
Wednesdays
5.30pm & 7.00pm

Holsworthy

Holsworthy Memorial Hall
Tuesdays
5.30pm & 7.00pm
Thursdays
9.00am & 10.30am



slimmingworld.co.uk

touching hearts, changing lives

Pyworthy Post

Deadline

The PRINT
deadline for the
next Pyworthy
Post is:

Wednesday 25th
JUNE 2025 at
12 noon.

Please email
your news as
early as possible.
Thank you.

View Pyworthy
Post online in
colour. Search:

[https://pyworthy-
parish.co.uk/](https://pyworthy-parish.co.uk/)

No Dog Fouling



Bag it - Bin it

Sunrise, Sunset Times for the coming month:



1st June 2025 (UK, Exeter)

☀ Sunrise time: 5.06am GMT

🌅 Sunset time: 21.18pm GMT

🕒 Length of day: 16 hrs 11 mins.

30th June 2025 (UK, Exeter)

☀ Sunrise time: 05.04am GMT

🌅 Sunset time: 21.30pm GMT

🕒 Length of day: 16 hrs 25 mins

Smart Phones are now a Thief's Best Friend

By Brian Meadows of Nofix-Nofee

People of all ages now use a smart phone for communication and entertainment, but they may not realise the apps they download can also create open doors to a thief who can ransack their files and steal their most private and personal data.

The term App has crept into the English language meaning small computer application and has several benefits, first to the user as a means of entertainment and second to the producer as a source of income, either legitimate or criminal.



Dangerous apps disguised as "legitimate" downloads.

Hackers have produced a range of bank-emptying tools, which silently

steal your money and personal data. Attackers target Android phone users, tricking them into installing fake downloads, Apple systems are not immune to this type of attack, but less so!

The hackers are using a development tool called .NET MAUI to create fake apps they look and feel like the real thing, these apps might claim to be for banking or dating or access to social media. This tool will mask the code hidden from antivirus software; however, these apps are not available through Google store and are blocked by Googles play protect.

This means if you receive an email or message suggesting you download an app outside of googles protection, there's a good possibility your phone will become infected. These apps are blocked from Googles Play Store.

HOW TO CHECK YOUR APPS ARE SAFE

First, make sure that Google Play Protect is switched on in your phone. Go to Google Play Store on your Android phone and tap on your profile icon. Then go to Play Protect > Settings > Scan Apps with Play Protect and toggle the feature on.

This will scan apps you're downloading to make sure they're OK!



This technique will also work on historical downloads downloaded from unknown sources.

Turning on the "Improve harmful app detection" setting, you allow Google Play Protect to automatically send unknown apps to Google for checking.

Go to the Google Play Store, then Profile > Play Protect > Settings.

**For help and free
telephone advice Tel:
Brian Meadows
01288 381061
Nofix-Nofee Computer
Repairs Service.**



Holsworthy Walk & Talk Group

By Gill Aston



Why not scan
our QR code?
This will take you
to our website.



Despite road closures and diversions 24 walkers enjoyed the sunshine and scenery of Torrington Commons last month. Due to the varied nature of the numerous tracks around the Commons both Level 2 and Level 3 were able to meet together and then take slightly different routes. The Commons cover some 365 acres, surrounding the town on all but the eastern side. There are 20 miles of public footpaths and there is free parking on the old bowling green site, with other paid car parking in the town. There is such a lot of history to walk through, including the old Okehampton to Halwill railway line and the Rolle Canal. The canal was built in 1827 as a tug-boat canal connecting Great Torrington to the River Torridge. The canal was used mainly to transport limestone to improve the local farmland but, together with the old railway line, now form part of the Tarka Trail cycleway and long-distance footpath. Whilst Torrington residents originally had the right to graze sheep on the Commons, these rights were removed in 1981 because no fencing is allowed and increasing amounts of traffic on the roads was leading to safety concerns.

Our Monday Walk in the Park continues to enjoy a good turnout. We are welcomed for refreshments afterwards by members of Devon Mind at The Youth Centre. Part of the work of Devon Mind involves offering activities to members of the community.

A recent activity has involved making very attractive jewellery from polymer clay and some of our walkers have enthusiastically joined in to create their own pieces.

Two more trainees have now become fully qualified Walk Leaders. Congratulations to Barbara and John.



Above: Barbara receiving her Walk Leader Certificate from Mike Jackson

Our new Walk Programme is now available taking us up to the beginning of August. These walks include Bratton Clovelly, Bude Battlefield Site and Meldon Valley and Dam. If you would like to join us at any time we walk on Mondays and Fridays. All walks start at 10.30 am and are **FREE**. Membership forms are available from our Volunteer Walk Leaders prior to the start of the walk. **This month's walks programme is on page 41....**

Holsworthy Walk & Talk group report continued from page 40....

Our June Programme of walks:



Level 2 & 3 walks are every Friday at 10.30am. All these walks aim to be completed in about 90 minutes.

JUNE Walks: Walk starting points as indicated below:

Friday 6th June – Level 2: COOKWORTHY FOREST. Start from main car park. Mainly hard tracks and gentle inclines. **LEADERS:** Mike Jackson & Cheryl Collins. EX21 5XJ.

Level 3: - - ROADFORD LAKE - SUMMER ROUTE. Start from the Visitors Centre pay car park. Hard tracks, fields and 2 stiles. Can be muddy. **LEADERS:** Kim Harris and Jacqui Shapland. PL16 0RL.

Friday 13th June Level 2: UPPER TAMAR LAKE. Start from Upper Tamar car park. Charges apply. Hard level track around the lake. Can be muddy in parts. **LEADERS:** Mike Jackson & Michael Heryet. EX23 9SB.

Level 3: - BRATTON CLOVELLY. Start from Parish Hall car park. Lanes, bridleways and fields. Some inclines can be steep. **LEADERS:** Paul Davies & Sue Sturmeay. EX20 4JT.

Friday 20th June - Level 2: PYWORTHY. Start from Village Hall car park. Lanes, tracks and fields. No stiles. Can be muddy. **LEADERS:** Richard Cook & Gill Aston. EX22 6JJ.

Level 3 - UPPER TAMAR LAKE. Start from Upper Tamar car park. Charges apply. Hard level track around the lake. Can be muddy in parts. **LEADERS:** Jacqui Shapland & Paul Davies. EX23 9SB.

Friday 27th June - Level 2: BRADWORTHY. Start from The Square. A mix of roads, fields and tracks. Can be muddy in parts. Cattle may be in fields. **LEADERS:** Cheryl Collins & Mike Jackson. EX22 7TD.

Level 3: - BUDE BATTLEFIELDS SITE. Start from Bude Tourist Info car park. Parking charges. Lanes, tracks, fields. Some inclines. **LEADERS:** Michael Heryet & Paul Davies. EX23 8LE.

Holsworthy Walk & Talk Group contact details:

Our website has lots of up-to-date information, together with our current programme of walks, details below:

holsworthywalkandtalk@gmail.com
<http://holsworthywalkandtalk.co.uk>

Phone contact numbers:

Gillian Aston 07854677784 or
Mike Jackson 01409 261196 or
Paul Davies 07731 626594.

Midsummer's Day

Midsummer's Day in England is celebrated on the 24th June and predates Christianity. While the summer solstice itself is on June 21st, Midsummer is considered the midpoint of summer and is celebrated around this time. Folklore associates Midsummer with tales of fairies and the supernatural world, and it's been a day of festivity and secular customs. It instantly brings to mind Shakespeare's well-loved "Midsummer Night's Dream", and curiosity about Pagan visits to Stonehenge, bonfires, and the power of the sun.

Midsummer's Day is one of the four Quarter Days in the UK Calendar. The other Quarter Days are Lady Day (25 March), Michaelmas (29 September) and Christmas Day (25 December).

Pyworthy Parish Council Meeting Summary

By Simon Davies, Clerk to the Council

Pyworthy Parish Council held its Annual Parish Council meeting on 22nd May. This meeting tends to be more of an annual review and admin meeting, signing off annual accounts and audit report. Cllr Ros Skinner was re-elected as Chairman and Cllr Parrish was re-elected as Vice-Chairman. Accounts for 2024/5 were duly signed off and audit documents signed. Councillor appointments and liaisons to committees were agreed for the year ahead. Grant cheques, agreed in November, were signed and will be heading out to recipients shortly.

Apart from the statutory AGM matters, it was very much business as usual. A member of the public raised issues of overgrown footpaths around the parish and this will be raised with DCC. An outline planning application for a new property in Derril was considered. Councillors were concerned that this application represented over development in the location and were concerned about drainage issues, so recommended refusal to Torridge DC. Quotes were considered for relaying the uneven pathway adjoining the war memorial. After discussion, the quote that Councillors considered that offered the best value for money was agreed. John Weighall has kindly agreed to make repairs to the bench in this location. A date for these works is to be agreed.

The Parish Council would like to erect

a notice board in Derril to better communicate parish council activities to residents here. A site, adjacent to the old chapel has been identified, on DCC owned land. Residents in the nearest property to the site have indicated that they are happy for it to be located here but asked that all Derril residents be advised of this proposal. The Parish Council are happy to give notice through this report and would be happy to receive any feedback on this proposal from Derril residents.

The next meeting will take place on Thursday 24th July starting at 7.30pm, in the village hall.

PYWORTHY PARISH COUNCIL

**Here are the contact telephone
numbers for our Parish Councillors:**

Ros Skinner: Chair

01409 254159 or 07800667842

Andrew Parrish: Vice Chair

01409 254303

Nick Lock:

01288 381529 or 07989595372

Rob Moores: 01409 254192

Angela Skinner: 07794 344117

Martin Brennan: 01409 691096

Andrew Beaven: 01409 253509
(after 7pm).

For general enquires phone:

Simon Davies, Clerk on:

tel. 07989747416.

Email address:

pyworthy@yahoo.co.uk

**The date of the next meeting will be
Thursday 24th JULY at 7.30pm.**

John Sanders Park Trust



2025 DRAW

Our park is 100
years old this year!

Our next meeting is on Thursday 5th June 7.30pm at the Village Hall. All welcome. We would love to see more people getting involved in helping to look after our lovely park.

At this meeting we will be discussing how to mark our 100 year anniversary of the Park this year, and will be making the first draw of our 2025 Lottery.

Lottery 2025

Hurry, Hurry, Hurry!

If you haven't yet bought a ticket for this year's lottery, then do hurry as the first draw is expected to be made at our next meeting on June 5th.

We make ten draws during the year, with cash prizes of £30, £20 and £10 at each draw, so there is lots of opportunity for a win. Tickets are only £10 for the whole year of draws, so if you would like to grab a ticket before 5 June, please contact:

**Jane Oliver 07500 834620 or
Rob Moores 07748 981910.**

**It will cost you just
£10 per ticket. You need to be
in it, to WIN it!**

**Meeting on 5th June at
the Village Hall, 7.30pm.**



Volunteers:

We would also really welcome volunteers who may be able to give some time on Tuesday evenings in the summer to help tidy up and maintain the Park and Play Area. Please contact Rob or Jane if you can help us.



St. Swithun's Church Pyworthy has its Patronal Festival in July

The Exhibition sets up on Friday 18th July at 10.00am.

**The Exhibition will be open on:
Saturday 19th &
Sunday 20th July 2025.**

This is part of the Church's Patronal Festival. There will be window displays of flowers in the theme of "Childhood Memories", plus artworks by talented local artists. Well worth a visit.

Refreshments will also be available.

Free entry, but donations would be appreciated.

Contact:

Janet Grant Tel: 01409 259356, for more details.

**Pop in during either day &
enjoy the exhibition.**

**Open 10.00am until 5.00pm
Saturday &
1.00pm until 4.30pm on
Sunday.**



Everybody welcome!

Useful Local Contacts Your Local Business & Services Directory

**Advertise in the Contacts
list for just £15 per year!**

Catering, Food & Drink SuppliesHargold Trading Ltd, 01288 381337
Chimney Sweep..... Humphrey Pullar 01409 240138/07984406290
Coarse FishingYeomadon Coarse Fishing 01409 253378
Computer Repairs Brian 07534804101
Decorating & Property Maintenance Julian Lapham 07765626069
Driving Tuition Evelyn Sharman 01409 259848/07885352082
Dog Grooming..... Avril's Mobile Grooming Service, 07811 320914 or 01288 381795
Dog Exercise facility Woofworthy, Holsworthy, call Becky 07887094320
Double Glazing M.A.G. Double Glazing Repairs 07969 234161
Electrical Contractors..... Algo Electrical Contractors01409 254595
Electrical Contractor Mike Daniel 01288 381342/07977 596772
Estate Agents Kivells 01409 253888
Fruit, Veg, Flowers & more Trigon Farm, Derriton – Al, 07988484069
Funeral Directors Arthur W. Bryant Funeral Service 01409 253000
Funeral ServicesDenise Wellington Funeral Services 01288 359277
Foot Care Kate Lord: 07557379099 Email: katescompletefeet1@gmail.com
Fencing/Garden structures..... WWW.RUBY-GROUP.CO.UK
General Builder James Mansell - General Builder 07896945889
Gun ClubWest Devon Air Gun Club, Nigel Palmer, 01409 254133
Grass cutting & garden maintenance Antony Jarvis, 07990016467
Heating Engineer Greg 01409 478198
British Hedgehog Preservation Society.....Bob Gelder, 01409-253791
Herbalist Diana Lee, Registered Medical Herbalist 01409 254450
Holiday Accommodation ... 01288 381272 email: jay@glebehouscottages.co.uk
Holsworthy NHS Dental Care 01409 255525
Holsworthy Golf Club.....01409 253177
Holsworthy Library 01409 253514
Holsworthy Medical Centre 01409 253692 **District nurses** 01409 255134
Holsworthy Post office & Sorting Office 01409 253608/01409 253236
Holsworthy Rural Community Transport team ... 01409 259001
Holsworthy Walk & Talk Group ...Gill Aston 07854677784
John Sanders Park Trust Martin Brennan 01409 691096
Line Dancing Group Brenda Martin 01409 253015
MOT & Garage Services ...Pyworthy MOT Ltd, Simon Martin 01409 254275
National Grid (report a problem line) National Grid is on 0800 032 0311
Oil Fired boilers & tanks/service & installations Greg 01409 478198
Police Non-urgent phone calls 101/email devon-cornwall.police.uk
Pyworthy Village Hall Bookings: Marie Heard 01409 254924
Organic Farm, Trigon Farm selling fruit & veg etc phone Al on 07988484069
Renewable Energy/replacement windows Renew SW Ltd, 01409 253533
Round Baling Stan Hopper 01409 253412
Rubbish Removal & Light Removals Service Man with a Van - Nigel 07725564331
Therapeutic Treatments CN Holistics 01288 381201
Torridge District Council www.torridge.gov.uk 01237 428700
Walling & landscaping services Call Dan on 07968996191 for a quote.

Algo Electrical



Domestic ~ Industrial ~ Commercial

Electrical Installation; fault diagnosis; consultation & advice, including renewable energy, alarm and security camera systems.

Telephone 01409 25 45 95

www.algo-sales.co.uk

Nofix-Nofee

Low Cost Computer Repair Services

We come to you!

- * Home or Office - No Call Out Fee
- * Email & Broadband Repair
- * Virus Infection Resolve
- * System Restore
- * New System Installation
- * Refurbished Laptops & PC's
- * Free Telephone Help & Advice
- * Hourly Rate and Fixed Fee
- * Onsite Fix & Repairs

Computer
Repairs
from only
£25



Tel: 01288 381061

Mobile: 07534 804101

Email: mail@nofix-nofee.net

Laptops for Schoolwork



Refurbished laptops that have been donated by generous customers, may be available to a child in need, for schoolwork.

**Contact Brian Meadows:
Tel: 01288 381061.**

**Read Brian's article on
page 37.**

Save Your Used Stamps for the Hedgehogs!



British Hedgehog Preservation Society

Macmillan no longer sells used stamps, but Bob has found another very worthwhile charity, who can make use of our stamps.

Please Save your used Postage Stamps!

Used National & International stamps can be recycled.

They will be used to generate income for the

British Hedgehog Preservation Society.

Simply pop stamps into an envelope and drop off at:

**9 Shortlands, Pyworthy or
Sunnymead, Pyworthy.**

Thank you!



No Transport?

Need a pickme-up?

Ring & Ride

- Door-to-door service for all ages
- Wheelchair & scooter accessible

Cars for Care

- Door-to-door service
- Times to suit your appointments
- 50p per mile

Here for Hire

- Mini Bus Hire for Community Groups & Charities
- £100/day - £65/evening
- Self drive (experience of driving a larger vehicle)

Call

01409 259001

office@holsworthytransport.co.uk

The Carroll Suite, Holsworthy Memorial Hall,
Holsworthy EX22 6DJ



Message from Henry & Henrietta

The larder is getting full and we are both doing our very best to protect your young plants from the demon slugs, etc. Judging by our waistbands, we are winning the nocturnal battle. But just like Jean Grant's Rampant Toads, we have to keep instructing our young hoglets not to venture onto the tarmac. Your submissions of **used postage stamps** is really helpful - please keep them coming. With your support we pricklies will keep on helping the battle v. slugs.
Your local hedgehogs.

It was Bound to Happen & it will Happen Again!

By Mike Godfrey

For the last 10 years or so I have written to successive Energy Ministers, pointing out the impending issues with the Grid system stability from replacing a lot of existing rotating generators, which provide inertia and stability to the Grid system, with large scale renewable energy in the form of wind and solar plant, which connects to the Grid system via an Inverter. The Inverter is needed because wind and PV generation is direct current (DC) whereas the grid is alternating current (AC). Hence the Inverter transforms DC into AC but by its very design offers very little or no inertial help to the Grid system in times of trouble such as a large fault, instant breakdown of plant etc. It seems to me that politicians are either very ill advised or have been brainwashed by the "climate change" lobby and "big business" interests who are making billions out of coating our productive farmland in glass and pushing forward vast plans for renewable energy with apparently little thought about how we will maintain the stability of our Grid system.

Before renewable energy was on the scene there were many sizeable faults or losses of generation, but the public knew virtually nothing about it, because the inertia in the running plant was instantaneously able to pick up the deficit from the loss of generation and then readjust their outputs to match the new load

demand. In those days all large fossil fuel power stations had emergency/backup generators that were powered by industrial aero engines made mostly by Rolls Royce and were equivalent to about 5% of the maximum output of the main plant in the power station. These backup generators could be started automatically if they detected a problem on the Grid and be up to full output within about 30 seconds. Together with the inertia provided by the large generators, these backup machines provided a vital way of ensuring adequate supplies of electricity were available to cover most situations.

Since the headlong rush has been on to reach net zero, virtually all the large power stations have been decommissioned, and in most cases the backup generation has gone with them. In their place are forms of electrical power generation which do not possess the attributes of the conventional plant which made sure that our Grid has remained stable since its inception in the 1930's.

With Ed Milliband's mindless rush to deplete our remaining Gas Fired conventional generators and replace them with even more intermittently available and total unreliable solar and wind energy, we can look forward to a very bumpy ride over the next 5-10 years. In fact on the 8th January we came very close to blackout conditions, gas supplies were low, there was little wind and no sun. We had to import massive amounts of electricity at very high cost from Europe to meet the demand

continued on page 49

It was Bound to Happen & it will Happen Again! continued ...

We can't rely on that every time that we are in trouble, because if Europe is in trouble they will be sure to look after themselves first. The Department for Energy Security and Net Zero (DESNZ) states "that wind and solar power provide energy security" when in fact the opposite is true, where does the energy come from when the wind doesn't blow and the sun doesn't shine. There were many days in the winter when solar only produced 1% of our energy needs and that was only for 6 hours of the day. Mr Milliband wants to triple solar power at great expense to our food producing farmland and that will still only provide 3% on winter days when we most need our electrical energy. All I can say is make sure that you have got plenty of candles because in my opinion it is becoming increasingly likely that will repeat the Spanish experience over here, unless we recognise the importance of generation inertia in helping to maintain the stability of our electricity supplies.



**Please
keep
Pyworthy
litter free!**

JUNE ANNIVERSARIES:

8th Anniversary, 14 June 2017 - Grenfell Tower Fire, 72 people were killed after a high-rise fire broke out in the 24-storey Grenfell Tower block of flats located in West London.

50th Anniversary, 9 Jun 1975 – 50 years ago

The first live radio broadcast of proceedings from Britain's House of Commons.

50th Anniversary, 18 Jun 1975 - The first North Sea oil was pumped ashore in Britain.

70th Anniversary, 6th June 1955 - Tim Berners-Lee, English computer scientist and engineer, invented the World Wide Web was born.

72th Anniversary, 2nd June 1953 -After the death of her father King George VI the previous year, Queen Elizabeth II was crowned at Westminster Abbey in 1953.

80th Anniversary, 6th June - D-Day landings. The largest invasion fleet in the history of warfare landed on five beachheads in Normandy, France. Known as Operation Overlord,

90th Anniversary, 1 Jun 1935 - Driving tests became compulsory for all new drivers in Britain. Anyone who had started driving on or after 1st April 1934 had to pass the test.

380th Anniversary, 14th June 1645 -English Civil War: 380 years since the battle of Naseby – 12,000 Royalist forces are beaten by 15,000 Parliamentarian soldiers.

810th Anniversary, 15 June 1215 - King John signs the Magna Carta.

**JUNE
2025**



Nature Notes

By Bryony Rylett

The theme tune of the 1990's, BBC children's TV programme 'Come Outside', featuring Auntie Mabel and Pippin, suggested viewers: "Look up, look down, look all around, up in the air or on the ground".

If, like Auntie Mable and Pippin, you took that advice in May you would have been rewarded with some stunning spring sights. Now, in meteorological summer, there is still "so much to see".

Spring's warm and sunny days saw a parade of vivid, wildflowers and blossoms. **Dandelions** (*Taraxacum officinale*) stood out with vast quantities of sunny, cadmium-yellow flowers turning fields and verges yellow.



Above: Dandelion flower & clock with *Helophilus pendulus* commonly known as a Dangling marsh-lover!

Dandelions are considered a weed by some however a closer look reveals an exceptional plant.

Dandelions prefer their roots in rich, loose, healthy soil but will grow almost anywhere, below 3,200 metres elevation, including through cracks in pavements.

Dandelion's genus name, 'Taraxacum' derives from the Arabic word 'tarakhshagog' meaning bitter herb. The species name 'officinale' refers to the plant's culinary and medicinal use; an 'officina' being the name of an apothecary storeroom in a monastery.

The plant's common name, Dandelion, is a corruption of the French: 'dent de lion' meaning lions' teeth; which the serrated leaves are said to resemble.

The Chinese were first to identify the medicinal virtues of Dandelion in assisting liver and kidney problems and as well as being a diuretic and blood purifier, the plant contains potassium, iron, magnesium and calcium together with vitamins A, B, C and K. The sap has been used as a cure for warts and corns.

Dandelions are also known as 'Wet-The-Bed' and 'Tiddle Beds' due to the diuretic property of the leaves. The buds are a caper substitute and the roots, dried and roasted, a coffee alternative.

There are some 200 micro species and 20 to 30 sub-species of this common plant that bears deep-yellow flowers early in the year, opening in the morning and closing in the evening (or in dim weather) giving rise to the colloquial name 'Shepherd's Clock' and to

Continued on page 51

Nature Note – JUNE continued from page 50.....

the flower being used as a natural barometer.

Dandelions flower from March to October and provide a vital, early source of nectar for pollinators. When pollinated the flowers turn into spherical, white, seed heads called pappus or more commonly blowballs or clocks.

Folk wisdom says Dandelion flowers woven into wedding bouquets will bring luck to the couple and dreaming about Dandelions indicates a happy union. The flowers are considered symbols of hope, summer and childhood but also of grief and the Passion of Christ.

The seeds blown from the 'clocks' are said to help tell the time, carry thoughts and affections to loved ones and the tallest stalk picked by a child in spring will indicate how tall the child will grow in the year ahead.

Blowing Dandelion seed heads can help with life's big decisions. If all seeds detach when blown it is said you are loved, any remaining seeds may indicate your intended has reservations and you can learn the number of children you will have by the number of seeds that remain after blowing.

Many folk make a wish when exhaling on a seed head and burying a Dandelion in the northwest corner of a house is said to bring favourable winds.

Below ground, among the roots of Dandelions, things are stirring; mole pups are reaching maturity and getting ready to leave their underground nursery.

Litters of three or four young are born in leaf and grass-lined nesting chambers in April and May, the boars (males) having mated and gone on their solitary way, leaving the females to raise the broods.

Male moles searching for females will drive themselves to exhaustion. If they encounter other males, they may fight to the death.

After 14 days the naked pups develop fur, their eyes open after 22 days, they are weaned after four or five weeks and leave the nest after some 33 days. The following spring they reach sexual maturity.

Leaving the nest to search for their own territory sees young moles at their most vulnerable, their only defence being scent glands that emit an unpleasant taste.

Only a third survive a year, most don't live beyond their third birthday, just a few live for up to six years.

Moles (*Talpa europaea*) are the only mammal to live solely underground and have more red blood vessels and use oxygen more efficiently than other mammals, due to living in an environment where oxygen levels are as low as 7%. They reuse exhaled air and can tolerate high levels of carbon dioxide.

Moles are largely invisible by day and active at night but make their presence underground known through the expulsion of soil, called molehills, a by-product of their firm walled, tunnel systems that are some 50mm wide by 40 mm high and up to 200 metres in length.

Moles are built for tunnelling with heavy-clawed front feet and solid, muscular bodies. They have silky, black, water

Continued on page 52

Nature Note – JUNE continued from page 51.....

repellent, fur kept sleek squeezing through their tunnels. The nap of their fur can switch direction to stop them getting stuck.

Hairs on their heads and feet help them navigate and those on their tails enable them to sense obstacles when moving through tunnels backwards. They have good spatial memory. Their noses are covered in sensory organs known as Eimer's organs.

Contrary to belief, moles are not blind. They have limited eyesight through pin-head sized eyes however they are probably nearsighted and colourblind.

The name mole comes from the old English word *Moldewarp* meaning earth thrower

Moles weigh between 72 and 128 grams and can shift 20 times their body weight in soil by bracing against the tunnel walls with their back legs and using one paw to push soil up. Scaled to human dimensions this would be equivalent to pushing an elephant out of a tunnel with one hand!

Moles have an extra 'thumb' or supernumerary digit next to their regular one; this sickle-shaped bone is species specific. They have also evolved an extended sternum to anchor the strong muscles of their chest and shoulders.

Tunnelling requires a lot of fuel. Moles need to eat at least half their body weight in food each day. Most of their nutrition is derived from earthworms; sometimes stored underground in 'larders'.

To stop the worms escaping, moles immobilize them by biting the head

They squeeze the unpalatable soil from the worms' guts before eating them. One such 'larder' contained 470 paralysed 'wigglers'.

Mole eradication was made a national policy in 1566 in a period known as the Little Ice Age that brought a shortage of food. Queen Elizabeth I passed 'An Act for the Preservation of Grayne' that remained in force for three centuries. In 2002 Queen Elizabeth II revived the tradition of a royal warrant for killing moles.

Strychnine was the 'go-to' poison for killing moles until 2006 when it was phased out as it was harmful to other animals and humans and resulted in moles suffering a slow and agonising death. Today's mole catchers use traps, but the type of trap is controversial

as it does not kill instantly and mole catchers are in dispute about the time that elapses after a trap is set to it being checked.

Unlike many other wild creatures, they have no legal protection apart from the Animal Welfare Act of 2006.

So...what is a moles' worth?

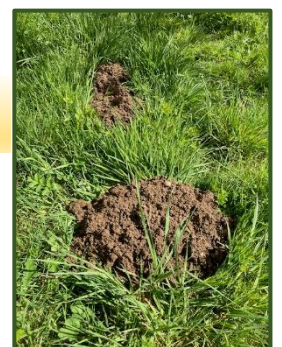
Living moles drain and aerate soil with their tunnels and eat many insect larvae that would otherwise damage root crops. They play a vital, worthwhile role in the ecosystem.

Right: Molehills

The answer to May's Nature Notes Question:
57.

This month's question:

Which three animals were Mole's friends in Kenneth Grahame's book *The Wind in the Willows*?



M.A.G Double Glazing Repairs

- ❖ Replacement of misty or broken glass units
- ❖ Replacement of hinges, handles, locks & seals
- ❖ Letter boxes and cat flaps installed
- ❖ Installation of fascias, soffits & guttering

Over 15 years' experience



Call MARK for friendly advice and a
NO obligation quotation.

Tel: 07969 234161



DENISE WELLINGTON
FUNERAL SERVICES

COMPASSIONATE, CARING,
TRUSTED & PROFESSIONAL

Memorials | Pre-Paid Funeral Plans

24 Hour Contact 01288 359277



Dementia
Friends
An Alzheimer's Society initiative

Golden Charter 
Smart Planning for Later Life

denisewellingtonfunerals.co.uk
enquiries@denisewellingtonfunerals.co.uk



**Print deadline for the next
edition of Pyworthy Post is:
Wednesday 25th JUNE 2025 at
12 noon prompt!**

Diary dates this month:

(Dates & events were correct at the time of printing)

Holsworthy Walk & Talk group enjoy a walk every Friday, see their programme on pages 40 & 41. Also, members take a short walk in Stanhope Park on Mondays.

Sunday 1st June – Guided tours of Trigon Farm, book on their website

Thursday 5th – Saturday 7th June - Royal Cornwall Show, Wadebridge

Thursday 5th June – John Sanders Parks Trust meeting at 7.30pm in the Village Hall.

Saturday 7th June – St Petroc's Festival at Hollacombe Church, 12 noon – bring a picnic, 2.15pm & 3.00pm.

Sunday 8th June – Open Farm Sunday, see page 32.

Monday 9th June – Evelyn's Walks group will leave Chilsworthy Village Hall at 10.15am. All welcome to join them.

Thursday 12th June – Holsworthy History Society, 7pm in The Manor Suite, talk on Tetcott village by Mr Mike Greenaway.

Saturday 14th June – Trooping the Colour in London.

Sunday 15th June – Father's Day, make all Dad's feel special.

Tuesday 17th June – Fish 'n' Things in the Village Hall Car park 4.30pm til 7pm & Royal Ascot (5 days).

Wednesday 18th June – Pyworthy Village Hall meeting at 7.30pm.

Saturday 21st June – Charity Birthday party in Pyworthy Village Hall, more information on page 28. Trigon Farm Flower Arranging Workshop, Romanian dinner in evening. Also, the summer solstice.

Friday 27th June – Abba Tribute Band at Memorial Hall in Holsworthy.

Saturday & Sunday 28th & 29th June – Holsworthy Vintage Rally 10 – 5, see pg 29.

Monday 30th June – Wimbledon (14 days).

Forthcoming Events:

Saturday 5th July until Saturday 12th July – St. Peters Fair in Holsworthy.

Saturday & Sunday 19th & 20th July – The Patronal Festival at Pyworthy Church, including an Art Exhibition – more information to follow.

Thursday 24th July – Pyworthy Parish Council meeting, 7.30pm in Village Hall.

Thursday 14th August – Okehampton Show.

Thursday 28th August – Holsworthy & Stratton Agricultural show.

Saturday 6th September – Pyworthy Annual Village Show, more details to follow.

Friday 3rd October – talk on the making of The War Horse film in Village Hall.

Saturday 1st November – "Not the Cowboys" band appearing at the Village Hall.

Friday 19th December – "Joy Machine" entertain in the Village Hall.

Email address: pyworthy@post.com Telephone number: 01409 478294 Page 54



RUBY

WWW.RUBY-GROUP.CO.UK

CLADDING | GATES | PLANTERS |
FENCING | PERGOLAS & MORE

BUILD YOUR
BESPOKE
DREAM GARDEN



SCAN ME



CLADDING

01409 231 763

GATES

WHY RUBY?

- ✓ MANUFACTURED IN HIGHAMPTON
- ✓ BESPOKE BUILD AVAILABLE
- ✓ FAST DELIVERY
- ✓ MADE TO MEASURE

FENCING

PLANTERS

PERGOLAS

Your Local
Team

KIVELLS

www.kivells.com



Kivells have served Holsworthy, the surrounding area and its community since 1885 and we are passionate about property. We know our local areas intimately and our dedicated staff strive to offer the best customer service in the industry.



Holsworthy

Kivells Property Suite
Market Square, New Market Road
Holsworthy, Devon
EX22 7FA
01409 253888
holsworthy@kivells.com



Mark Kivell
Office Manager



Daniel Stokes
MNAEA
Director



Jack Alford
Valuer



William Branton
Sales Negotiator



Enya Garrett
Property Secretary

