

# PYWORTHY POST



Left: three, Six-Spot  
Burnet Moths on Ragwort  
flowers (R.Godwin,  
copyright)



## What's in your paper this month?

The Annual Village Show & The Park 100-year celebrations are this month! More events & dates for your diaries inside, plus much, much more .... turn the page and come inside.



Read online at:

<https://pyworthy-parish.co.uk/>

and view the paper in full colour.

September 2025  
Issue number 343

# WHO'S CELEBRATING THIS MONTH?



## BIRTHDAYS

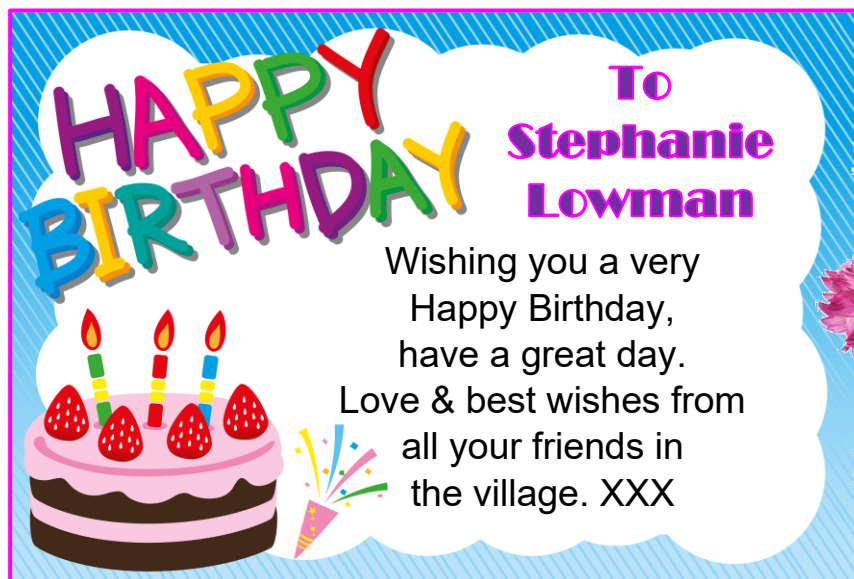
### SEPTEMBER

- 3<sup>rd</sup> Ken Heard, Nigel Palmer
- 5<sup>th</sup> Alex O'Farrell
- 6<sup>th</sup> Jacob Smith
- 7<sup>th</sup> Millie, Georgina & Oliver Moores
- 8<sup>th</sup> Richard Flynn
- 9<sup>th</sup> Pat Tanner
- 11<sup>th</sup> Bryonie Lapham, Amy Littlejohns, Bethany Gifford
- 12<sup>th</sup> Roman Durant, Ella Peacock
- 13<sup>th</sup> Mike Daniel
- 16<sup>th</sup> Linzi Buse
- 17<sup>th</sup> Helen Robinson, Anne O'Farrell, John Ley, Otis Steyn
- 19<sup>th</sup> Sam Godfrey
- 22<sup>nd</sup> Gregory Parrish
- 23<sup>rd</sup> Mike Johns, Christopher Skinner, Steven Peddle
- 24<sup>th</sup> Peter Titchen
- 25<sup>th</sup> Myles Fishleigh, Anita Meredith, Alfie Geary
- 26<sup>th</sup> Stephanie Lowman
- 27<sup>th</sup> Alison Davies
- 28<sup>th</sup> Thomas Glessing

#### Community Birthday list

New Residents of Pyworthy Parish, please feel welcome to add your birthdays to our community list.

### SPECIAL BIRTHDAYS AND FAMILY OCCASIONS





## Welcome to the SEPTEMBER Edition



By Marion Ravn

September is on the horizon! I hope that you're all feeling refreshed after the summer holidays, and all set for the month ahead.

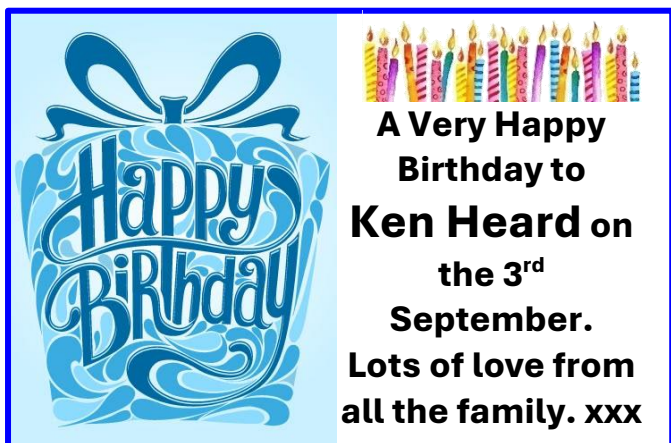
Another very full edition this month.

The Trustees of the John Sanders Park Trust for Pyworthy Park would love to see as many people as possible at the centenary celebrations of our village park on **13th September**. There will be traditional sports day races for children, face painting, a rounders match for all the family, a barbecue and more fun and games. See more details on page 29.

Are you all set for the Annual Village Show on the **6th September**? This is always a really popular event. There are 113 classes this year for you to enter. If not, just pop along and enjoy the displays of craftwork, locally grown fruit & vegetable, baked items, floral displays and not forgetting the children's wonderful creations **or** simply pop in for some refreshments. There are lots of great articles again this month, and local events to enjoy. Until next month. Marion

**Keep the news and articles coming in.**

**Email: [pyworthy@post.com](mailto:pyworthy@post.com)**



## Page Index:

- 2. September Birthdays
- 3. Editors welcome & page Index
- 4/5. Church News & Church service information
- 6/9. Village Hall news, events & clubs
- 10/13. My Electrical Industry Recollections by Mike Godfrey
- 13. Parish Council contacts information
- 14. Evelyn's Walks group report
- 15. Sponsor's page & Answers to the August Poser Quiz
- 16/17. Pyworthy People
- 18. Men's Skittles Team, **MUSIC LESSONS** & sponsor's page
- 19/21. Gardening with Mike Godfrey
- 21. "Not the Cowboys" poster
- 22. What did Ragwort Ever do for us?
- 23. Sponsor's page
- 24. Holsworthy Library – what's on in September
- 25/26. SIM Swap Fraud
- 26. Line Dancing Classes
- 27. Sponsor's page
- 28. **Village Show poster**
- 29. Pyworthy Park 100 Year Celebrations
- 30. War Horse Talk details & poster
- 31. Sponsor's page
- 32. Easyfundraising for the Village Hall & **T.D.C. Postal voting**
- 33. September Poser Quiz, **T.D.C. BIN collection dates** & Holsworthy Food Bank
- 34/35. Poetry Corner
- 36. Sponsor's pages & **T.D.C.** future changes
- 37. Creative Craft Club, sponsor & Fish n Things dates
- 38. Slimming World & sunset & sunrises times
- 39. Computer News
- 40/41. Holsworthy Walk & Talk group report & programme of walks
- 42. Sponsor's page
- 43. The John Sanders Park Trust
- 44. Derril Solar Park update
- 45. Local Business contacts list
- 46. Sponsor's page
- 47. Save your stamps for Hedgehogs & Sponsor's page
- 48. Sponsor's page
- 49. Pyworthy Parish Council meeting summary
- 50/53. September Nature Notes series
- 54. Dates for your Diary
- 55/56. Sponsor's pages

# CHURCH NEWS

By Gill Johns, on behalf of  
St. Swithun's Church



Autumn already? We're only halfway through August, with still 3 more weeks of school holidays for our youngsters and it seems that summer is over. Have you had a good relaxing break? Were you able to get away and have you come back refreshed? Are all the local children ready for their return to school? The 'A' level results were out recently and now we await the GCSE marks. It is a long time ago that I sat my 'O' levels and then 'A' levels which then pointed me in the direction for my future. I must admit to being glad that I am not a youngster now trying to decide where my future lies. We must hold all our young people and their families in our thoughts.

Harvest will be coming up shortly and we see so much in our local supermarkets for sale – let's think of all the farmers who produce the fruit and vegetables, milk and meat. Lack of rain has made a huge difference this year. I struggle to find produce that has not been flown in from halfway across the planet. Yet still we build more solar farms on our farmland.

Looking ahead Pyworthy's **Harvest is an afternoon service at 3pm on Sunday 5<sup>th</sup> October.** We shall hope to see a lot of locally grown produce and some tins which can be passed on to the Holsworthy Foodbank. When it comes to need, we have found Pyworthy to be exceedingly generous.

Email address: [pyworthy@post.com](mailto:pyworthy@post.com) Telephone number: 01409 478294 Page 4

Thinking even further ahead we always look forward to our **Christingle service which this year falls on Sunday 7<sup>th</sup> December at 4pm.** Gifts should be wrapped and a label indicating age/gender range would be appreciated. For anyone unable to make the service gifts can be left in St Swithun's from 1<sup>st</sup> December. All the generous donations will be taken to the Women's Refuge in Barnstaple for children who unfortunately get caught up in domestic violence.

At the end of November, a representative from Mothers' Union (MU) will be attending our united benefice service here in Pyworthy. The Exeter Diocesan President of the MU will be speaking at the service and will introduce us to the work of the MU in Devon today and outline how the MU came into being in 1876 when Mary Sumner called a meeting to unite mothers of all classes in the aim of bringing up children in the Christian faith.

If you can knit do think about becoming a part of a 'Chain' reaction to highlight the growing number of incidents related to domestic violence being reported across the county of Devon in the past few years. Every link in the chain will represent a victim of domestic abuse.

**To join in is very easy, the pattern (if you can call it such!) is simple:**



**Cast on 60 stitches (size 8 or 4mm needles). Knit 6 rows then cast off.**

Then arrange for your completed knitted chains to be delivered to Pyworthy Church before 28<sup>th</sup> November, allowing time for them to be added together into one large chain.

**Continued on page 5...**



## Church News continued.....

Every time we write our Church News we ask for peace in our World, but our message is not getting through to the “big wigs” who just carry on firing drones, rockets and bullets at children queuing for food.

But we will still carry on asking that the leaders in our world are granted the strength to overcome violence and hatred, and the courage to build a more peaceful world.



### Hollacombe Church

Advanced Notice  
Sunday 30th November  
Advent Carol Service at 3.00pm.  
Saturday 27th December Traditional  
Carol Service at 2.30pm, plus seasonal  
refreshments.



### Pyworthy Church

Sunday 5<sup>th</sup> October Harvest Service at  
3.00pm  
Sunday 7<sup>th</sup> December our family  
Christingle Service at 4.00pm.


## United Benefice of Holsworthy

Rector: Revd Alison Hardy, Churchwarden: Alison Davies & Liffy Lowes



### Benefice Services for SEPTEMBER

<http://www.holsworthybenefice.org.uk/services/benefice-calendar/>

Worship and Prayer in the Holsworthy Benefice – SEPTEMBER 2025				
Date	Bridgerule	Holsworthy	Pyworthy	Hollacombe
Sunday 7 <sup>th</sup> September	<b>11.00am</b> Sung Eucharist	<b>9.30am</b> Sung Eucharist	<b>9.30am</b> Family Service	<b>9.30am</b> Mass
Sunday 14 <sup>th</sup> August	<b>11.00am</b> Morning Prayer	<b>11.00am</b> Sung Eucharist	<b>9.30am</b> Sung Eucharist	<b>3.00pm</b> Harvest Evensong with guest preacher FR ALEX HONEY (Heavitree) followed by AUCTION & TEA
Sunday 21 <sup>st</sup> September	-	<b>11.00am</b> Sung Eucharist	<b>9.30am</b> Sung Eucharist	<b>9.30am</b> Mass
Sunday 28 <sup>th</sup> September	<b>11.00am</b> Harvest Eucharist	<b>11.00am</b> 	<b>9.30am</b> Morning Prayer	-
<b>9.30pm – All Age Service at Pancrasweek</b>				

## Pyworthy Village Hall News

Martin Brennan, Chairman

### Coffee Morning Holsworthy Memorial Hall

A huge thanks to Janet Grant and her Team for organizing a very successful Coffee Morning at the Memorial Hall on the 13<sup>th</sup> of August last. All funds raised were in Aid of our Village Hall, which we are very grateful for. 😊 (See Janet's thank you message opposite for more details).

### Potters Fish n Things

Just to let you all know that Olly will be back in September, this time serving **on the third Thursday of every month, starting on the 18<sup>th</sup> of September.** Please note the change of days. For further details see page 37 for more information.

### The Making of War Horse and Much More!!!

Please join us in welcoming our speaker Paul Rendell on Friday the **3<sup>rd</sup> of October**, who will take us on a journey behind the scenes of the beloved film '**War Horse**' and other iconic productions. Sharing with us some fascinating insights into the making of these Cinematic masterpieces!! For booking details, please see page 30.

### **Date for your Diary:**

Saturday 1<sup>st</sup> November. The Village Hall will present: "**NOT THE COWBOYS**" See page 21.

**See page 32 for easyfundraising.  
How you can help our Village Hall,  
while you shop online.**

**Thank You Very Much!**

## **Fundraising for Pyworthy Village Hall!**

**Many thanks to all the helpers,  
and those who contributed in  
any way to the coffee morning,  
which was held in the  
Holsworthy Memorial Hall, on  
the 13<sup>th</sup> August.**

**We raised £319.15p for our  
Village Hall.**

**Once again – thank you for  
your support.**

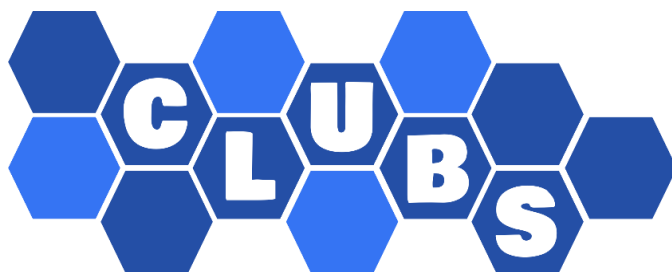
**Janet Grant**



Above: a photo taken during the coffee morning. Thank you for all your support.







## Village Hall Pub Nights!



This month our Social Evenings are:

**Fridays the 12<sup>th</sup> & 26<sup>th</sup>**  
**September!**

Don't forget to come along  
and join us for Beer or  
whatever takes your fancy and  
perhaps have a go at our next  
**'Play Your Cards Right'**  
session on **Friday the 12<sup>th</sup>**. We  
look forward to seeing you all.

**Doors/Bar Opens  
at 7pm until late.**

**Everybody is welcome, come  
along and have a good time.**



## What's on at the Pyworthy Village Hall.....

**Mondays:** Line Dancing Club:

**Complete Beginners:**

5.30pm – 6.30pm

**Beginners/Improvers,**

6.30pm – 7.30pm

**Intermediate,** 7.30pm -9.30pm.

**Tuesdays:** Rural Art Group,

2.30pm – 4.30pm.

**Returns on the 16<sup>th</sup> September.**

**Tuesdays:** Line Dancing Club,

**Intermediate,** 7.30pm -9.30pm.

**Tuesday evenings:** Men's Skittles  
Team. Playing at home & away.

**Wednesdays:** Beginners Ballroom  
dancing & Latin class, including  
Sequence dancing 7.30pm – 9.00pm.

**Thursdays:** Gill's Golden Gang,  
10.00am – 11.00am. **Resumes on the  
11<sup>th</sup> September.**

**Thursdays:** Coffee Mornings –  
1<sup>st</sup> & 3<sup>rd</sup> Thursdays of each month,  
from 11.10am. Everybody welcome!

**Thursdays:** Creative Craft Club –  
2<sup>nd</sup> & 4<sup>th</sup> Thursdays of each month,  
from 2.30pm until 4.30pm.

**Thursdays:** **NEW** Lindy Hop Dance  
class for beginners 7.00pm – 9.00pm.

**Starts on the 11<sup>th</sup> September.**

**Please see club adverts throughout the  
paper, for contact details.**

## **Upcoming Events at the Village Hall**

**Dates for your Diary!**

**Friday 3<sup>rd</sup> October 2025**

An evening with **Paul Rendell** detailing the making of "**War Horse**" and many other films made on **Dartmoor**.

**Saturday 1<sup>st</sup> November 2025**

Live music event "**Not the Cowboys**" A rip roaring party band are coming to Pyworthy.

**Friday 19<sup>th</sup> December 2025**

A pre-Christmas party with "**Joy Machine**" playing music from the 60s to modern day Pop.

**Watch this Space, further details to follow!**

**ENTERTAINMENT**

**Dates for your Diary**



**Our next meeting is on  
Wednesday  
24<sup>th</sup> September  
at 7.30pm.**

**Please feel welcome to  
join us.**



**DOGS TO BE  
KEPT ON A LEAD**



**PLEASE  
NO FOULING**

**THINKING  
AHEAD!**

**Forthcoming Village Hall Event**



**St. Swithun's Church Christmas Fair will be held on:  
Saturday 29<sup>th</sup> November this year.**

I know it's a little early, but just a reminder for this year's Church Fair. You can start saving your books for the book stall, and any nice Brica-Brac as well. Later we will be asking for donations to the cake and chocolate Tombola stalls. There will be lots of craft stalls for you to do your Christmas shopping along with wonderful refreshment. **SO PLEASE PUT THE DATE IN YOUR DIARY.**

**Full details in next month's edition of the Pyworthy Post.**



Join

# Gill's Golden Gang

Strength & Balance Exercise Class

for the over 55's!

Held at:

Tuesday: Holsworthy  
Scout Hut

10.30am to 11.30am &  
12 noon to 1.00pm.

Thursdays: Pyworthy  
Village Hall

10.00am to 11.00am.

Halwill Baptist Chapel  
Hall

12.45pm to 1.45pm.

Contact Gill Aston on: 07854677784  
for more information.

*Coffee Morning*



## VILLAGE HALL COFFEE MORNING GROUP

**Come along and join us at  
11.10am on the 1<sup>st</sup> & 3<sup>rd</sup>  
Thursdays of each month.**

**Meet new friends, enjoy a coffee,  
and have a good chat.**

**For more information phone:**

**Brenda on: 01409 253015 or**

**Marie on: 01409 254924.**

**Now held in the main Village Hall.**



**NEW MEMBERS ARE  
VERY WELCOME!**

# My Electricity Industry Recollections

Episode 8

## I become a Power Station Trainee Engineer

By Mike Godfrey



We weren't allowed to take holiday at the Training School, so I started my time at Acton Lane with a 4-week holiday. I received a letter through the post telling me to report to Acton Lane Generating Station (as it was called then) at 08.00 hrs on the first Monday in August 1964. I had no idea where Acton Lane was and no internet or Google Maps to help me, fortunately it had tall chimneys and cooling towers. Acton Lane was part of a group of Power Stations mainly built in the 1950's, including Battersea B, Fulham, Bankside (now the Tate Modern), Blackwell Point and Deptford, which were principally there to meet the needs of London. Acton Lane had 5 x 30,000kw machines and was already operating as a 2 shifting station, meaning it started up at about 06.00hrs covered the morning peak, reduced output or took machines off during the day and then came up to full output for the evening peak, generally shutting down completely around midnight as instructed by Grid Control Centre.

I can still remember my first day at Acton Lane, as I walked along the Turbine floor, it seemed vast with very large noisy machines belching steam and generating 30,000kw each, I truly wondered whether I would ever be able to come to terms with it all, and cope with what was going to be expected of me. Little did I know before my career was over, I would be

dealing machines over 25 times the size of these machines, housed in buildings over a quarter of a mile long and 150 foot high, fed by boilers that stood 300 foot high and with a range of very serious and costly problems that I just couldn't have even imagined.

Working at Acton Lane was altogether a different experience. Gone was the regimentation and strict routine replaced by a more relaxed environment which encourage you to take an interest and get involved to learn how things work. I gradually learnt how Power Stations worked and what my role as an Electrical Engineer would be. We operated entirely separate from and in total isolation from the new plant being constructed or that which was being planned for the future.

I was learning to be an Electrical Engineer on old technology, which mainly originated from the 1930's and 40's but nevertheless it provided a very good grounding in basic power engineering. Whilst at Acton Lane I spent time in all departments, including operations on shift. Because the routine for the Station was to shut down around midnight, the shift staff had got into the habit of literally "going to bed" for 4-5 hours. One night

***continued on page 11...***



## **I become a Power Station Trainee Engineer continued ....**

when I wasn't on shift there was a major explosion at Battersea and Grid Control rang our Control Room to restart our plant, but everyone was asleep and didn't hear the phone ringing. They then rang the Security in the Gatehouse, who was also asleep. Fearing that there were major issues at Acton Lane as well, they sent the Police round to investigate and all was revealed. From then on someone always had to sleep in the Control Room ready to answer the phone in an emergency.

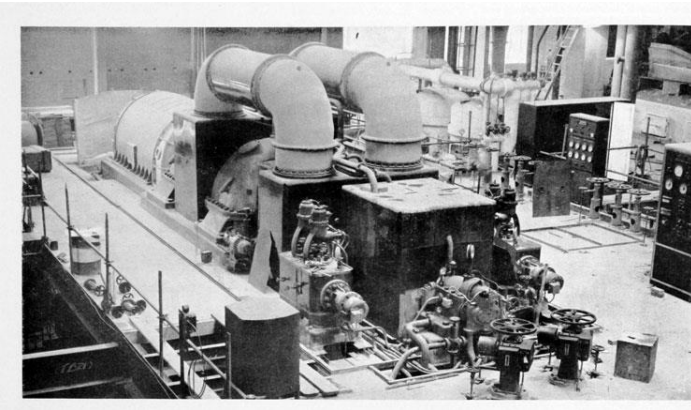
As one of about 6 apprentices we were required to help the test teams, who regularly carried chimney flue gas analysis being located in a densely populated area. This was far from a pleasant experience. We were sent to the top of the boiler house with the test probes. The heat was horrendous and when we had to open the flue gas ducting to insert the probes, we received lungs full of sulphurous gases. I am not sure if it did me any harm, but I am still going, so maybe it did me some good!! There was no such thing as PPE, no masks or breathing apparatus, just our apprentice green overalls. We just regarded it as part of the job but in reality, it was more like slave labour organised by the Efficiency Engineer Fred Luttlely, who never seemed to be up there with us.

I quickly got to know the plant and how it interacted from an operational point of view and when I was on shift, I was even allowed to synchronise the machines and load them, (that is connect them to the grid). This wasn't

too easy as synchronising involves getting the generator running at the same speed and voltage as the grid point it was connecting to. As the grid is continually changing as the load varies it was like trying to connect to a moving target. The voltage wasn't too bad as the Automatic Voltage Regulator (AVR) was fairly easily adjusted but the speed of the machine was controlled by adjusting the steam flow from the boiler into the prime mover turbine. We had to watch three bulbs if they lit in turn rotating anti-clockwise the machine was too slow, if they rotated clockwise we were too fast. When they stopped momentarily that was the time close the circuit breaker before we were out of sync again. Some days, if the Grid was particularly lively, it could take some while to connect the Generator. The Power Station I was allocated to was officially Acton Lane B as there was a much older A Power Station built on the opposite bank of the Grand Union canal in 1898 but was still operational for emergency purposes with one 30,000kw machine, which had been retrofitted in the 1930's. When that had to run, we knew the situation was desperate. Most of the time it remained unused and unmanned so it became a "playground" for us apprentices, even though there were big slate boards with open copper switches on them all live. H&SE hadn't been invented then, somehow, we all survived!! There were large tunnels that connected the cables from the new B Station to the A Station and the Grid Substation on that side of the canal, which we used to get under the Grand Union canal,

**continued on page 12...**

## I become a Power Station Trainee Engineer continued ...



Above: Acton Lane 30,000kw turbo generator 1953

although there was a bridge but that took longer. One notable jape we got up to when a new apprentice arrived, was to take them to the A Station and position them in a predetermined spot and then from the gantry a 100 ft or so above, empty a dustbin full of lagging powder over the victim followed immediately by another dustbin full of water, such that they were completely covered in lagging from head to foot. We would then run back through the tunnels and get back to the workshop at our benches, while the victim was led back via the longer route via the bridge. The victim would be led into the workshop to be greeted with a unanimous "what the hell has happened to you" as we all claimed that we had no knowledge of how it could have happened. The one problem with using the cable tunnels was the wild cats, all of which had grown to be the size of small tigers. There was one ginger tom cat that actually seemed to be the size of a tiger and was particularly aggressive. If you saw him, you would turn tail and run for it, generally with him chasing after you.

My time at Acton Lane seemed to go by very quickly as there was always something to be involved with and learn about. In parallel with my practical training, I attended College one day and one evening a week at Twickenham and then latterly at Southhall College of Technology, where I progressed through my Electrical and Instrumentation qualifications to get my Higher National Diploma and ultimately CEI part II, which set me up for a career with the CEGB and finally National Power/RWE. For the last part of my Apprenticeship, I had to spend 3 months on "work experience" in a Company called Keith Blackman based in Tottenham in northeast London, diametrically opposite from where I lived in Staines near Heathrow. The challenge was to get there by 8am, as there were no direct train connections. However, there was a Greenline coach route 718, which crossed London and went passed the top of my road 6.20am. This got me to Tottenham at 7.50am, which gave me 10 minutes to run the last mile to clock in on time. On the way home I wasn't so lucky as I missed the Greenline coach by about 10 minutes, so I had to catch two Red buses to get me to Green Park, then catch an Underground train to Hounslow West and then another Red bus to home. I used to get home about 9.30pm, have my dinner, and go to bed ready to get up at 5.30am ready to catch the coach again. That was my life for 3 months, being an Apprentice in those days wasn't for the faint hearted. Some of you might know that I own a restored London Transport Greenline

**continued on page 13...**



## **I become a Power Station Trainee Engineer continued ...**

coach, when I looked up its well documented London Transport history, it seems it was one of about 4 coaches that were on the 718 route at that time, so there is a very good chance that it was the coach that got me to work each day some 56 years ago. If I have got it right, it is an incredible coincidence.

**Next time** I change my green overalls for white ones as I become a fully qualified Electrical Engineer, working for the CEGB Non-destructive Testing and Grid Transmission Departments.



Above: Acton Lane and Vanguard –  
Cira 65-9.



Above: The Acton Lane Power Station

### **Holsworthy History Society**

**Our next talk is on:**

**Thursday 11th Sept @7.00pm in**

**The Manor Suite, The Memorial Hall  
in Holsworthy, on The Kelly Family.**

**For more information about the  
History Society contact:  
holsworthyhistorysociety@gmail.com**

**Margaret Stacey**

### **PYWORTHY PARISH COUNCIL**

**Here are the contact telephone  
numbers for our Parish Councillors:**

**Ros Skinner:** Chair

01409 254159 or 07800667842

**Andrew Parrish:** Vice Chair

01409 254303

**Nick Lock:**

01288 381529 or 07989595372

**Rob Moores:** 01409 254192

**Angela Skinner:** 07794 344117

**Martin Brennan:** 01409 691096

**Andrew Beaven:** 01409 253509  
(after 7pm).

**For general enquires phone:**

**Simon Davies, Clerk on:**

**tel. 07989747416.**

**Email address:**

**pyworthy@yahoo.co.uk**

**The date of the next meeting will  
be Thursday 18<sup>th</sup> SEPTEMBER at  
7.30pm.**

## Evelyn's Walks Update

By Evelyn Sharman,  
Group Organiser



On Monday 11th August, we parked at the Village Hall in Bratton Clovelly having checked with the Booking Clerk that we wouldn't be treading on anyone's toes. If you haven't been there, it's well worth a visit. There's a children's play area & a sports field at the rear with far-reaching views. We followed Irene who had kindly agreed to lead the way. We set off down the hill & turned right opposite the Clovelly Inn. We then turned left along the lane which took us down a very steep hill. We stopped at the bottom where the road crosses a stream to admire what would have been the original Mill on one side & The Manor on the other. Apparently, The Manor dates back to the end of the 18th century. The former stables & barns have been beautifully converted into guest accommodation. There is lots of interesting information about The Manor & the locality on their web site. We set off up the hill which thankfully wasn't quite as steep as the hill that we had descended. I had wondered about walking the route in the opposite direction BUT we all agreed for future reference that it wasn't a good idea!! We turned left onto a bridleway which is also the access for Manor Cottages & Lower Voaden. The route took us through the farmyard & having turned left, we joined a footpath on our left rather than continue to follow the bridleway. When we last walked this route in June'24, the fields were being cut for silage.

Email address: [pyworthy@post.com](mailto:pyworthy@post.com) Telephone number: 01409 478294 Page 14



This time they were being grazed by sheep favouring the shade of the trees. We were reminded by Irene that this was the original packhorse trail & she brought one of the wooden plaques to our attention. It's a beautiful tranquil route & very accessible with self-closing galvanised gates & a wooden footbridge across a stream. No stiles. When we rejoined the lane, we turned left which brought us back to the centre of the village. Some headed for welcome refreshment at Clovelly Inn which looked very inviting & others headed for the cool of the Parish Church of St. Mary the Virgin. It dates back to medieval times & has some fascinating features, including faded wall paintings from the 17th century. I would recommend looking at the web site for Bratton Clovelly prior to making a visit. The circular route was approx. 2.75 miles & took less than two hours.

**The next walk will be on Monday 8th September.** We'll meet at the Church in Halwill **NOT** Halwill Junction. If you would like further information, you are welcome to contact me.

**Evelyn Sharman Tel: 01409 259 848 Email: [evelyn.sharman@btinternet.com](mailto:evelyn.sharman@btinternet.com)**



# Pyworthy MOT Ltd



Typical opening hours depending on school times and holidays.

**Monday:** 9.00am until 1.00pm

**Tuesday:** 9.00am until 4.30pm

**Wednesday:** 7.30am until 4.30pm

**Thursday:** 7.30am until 4.30pm

**Friday:** 7.30am until 4.30pm or  
7.30am until 1.00pm.

For all your servicing and general repairs, MOTs and MOT work. M.O.T.s can be booked 30 days in advance of expiry, so booking early can catch and give time to repair, unknown faults and problems.



**Call Simon - Tel: 01409 254275**

Courtesy car available.

## AUGUST'S PYWORTHY POSER QUIZ ANSWERS:



1. Liver-pool
2. Nottingham Forest
3. New-castle Utd
4. Everton (mints)

5. Tot-ten-ham
6. Bolt-on Wanderers
7. 'uddersfield Town
8. Ox-ford Utd
9. Wrex-ham
10. Aston Villa
11. Black-burn
12. Bright-ton



Try this month's quiz on page 33. Pyworthy Pilgrim.

**ActionFraud**

Report Fraud & Internet Crime

**0300 123 2040**



**CRIMESTOPPERS**

**0800 555 111**

Call anonymously with information about crime

### In the Spotlight



**Name:** Janet Grant

**Age:** 82

**Occupation:** Now retired; previously a secretary for Surrey Motors, a farm food manufacturer. A freelance secretary working for three farms. Creating and selling art in her spare time.

**Place Of Birth:** Halifax, Yorkshire. Moved to Pyworthy in 2001 (during the Foot & Mouth outbreak) to be close to family.

**What is the best thing about Pyworthy and why?**

The peacefulness and I like the countryside and nature of the parish.

**What one thing would you change about Pyworthy and why?**

It would be nice to have the local school back, so we had more young families in the village.

**Describe yourself in 3 words:**

Friendly, helpful, good listener.

**How do you like to spend your free time?**

Gardening, swimming, travelling (Janet & her husband travelled extensively in their motor caravan) painting and art. Janet tutors the Pyworthy Rural Art Group that meets weekly on Tuesday afternoons. (PRAG starts again on 16/9/25).

**What one thing have you always wanted to do, try or learn?**

I would love to have been or tried to be an opera singer or a florist. I sang in my youth and enjoyed arranging flowers for St. Swithun's Church.

**If you could meet anyone living or dead, who would it be?**

My grandfather, on my mother's side. I never met him but he knew about me. I was his first grandchild. I feel he watches over me, or Maria Callas.

**If you won a million pounds, what would you do with the money?**

Treat my family, give something to the people that have helped me in life, the Girl Guide Movement and the Church.

**Continued on page 17**

Thanks go to Bryony  
Rylett for your research.





**If granted three wishes, what would they be (extra wishes excluded)?**

Good health, world-wide understanding and happiness for my family.

**If you had to flee your home at very short notice what three items would you grab?**

1. My handbag, containing my phone and car keys etc.
2. Family photographs.
3. A small, handmade, collapsible wooden stool; a family heirloom from WW1.

## **Pyworthy Rural Art Group**

# **Pyworthy ART**



**Art classes will return on the 16<sup>th</sup> September.**

Welcome back to Art classes. I hope you all had a good summer. Please note we start back on the 16<sup>th</sup> September and not the 9<sup>th</sup>. Our Exhibition in the church in July was a credit to all who entered, and many nice comments were made. Why not come and join us and learn a few new skills.

**We meet in the Village Hall on Tuesday afternoons 2.30pm until 4.30pm.  
All abilities welcome.**

### **The programme for September:**

**Tuesday 16<sup>th</sup> September**      Tonal pencil drawing

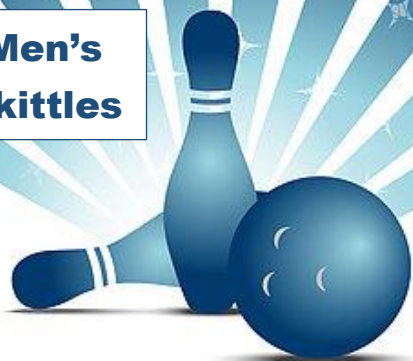
**Tuesday 23<sup>rd</sup> September**      Flower in watercolour - wet into wet

**Tuesday 30<sup>th</sup> September**      The sea and waves in watercolour.

Please bring your own materials if you have them and a drink, if so desired.

**For further information contact Janet Grant**  
**Tel: 01409 259356**

## Men's Skittles



## Men's Skittles!

Pyworthy has a Men's Skittles Team, which meet on Tuesday evenings. If you would be interested in joining them, please contact:

Andrew on 07531186466 or 01409 253509.

Training will be given!



## Music Lessons

- ☺ Piano                      ☺ Clarinet  
☺ Electronic Keyboard    ☺ Guitar  
or ☺ Flute

**Qualified experienced teacher**

**Contact: Rose Sullivan**

**Email: [rosamundsullivan@gmail.com](mailto:rosamundsullivan@gmail.com)**

**Tel: 01409 255487**



Glebe House Cottages  
Est. 1985

## Glebe House Cottages, Bridgerule

**[www.glebehousecottages.co.uk](http://www.glebehousecottages.co.uk)**

**Telephone: 01288 381272**

## Accommodation

6 luxury self-catering cottages all recently refurbished to a high standard.

Beautiful 5 acre site with a huge amount of facilities for all ages including:

- ❖ Heated outdoor swimming pool
- ❖ Tennis court
- ❖ Stunning formal gardens
- ❖ Cellar bar & games room
- ❖ Children's play area,
- ❖ Woodland walk
- ❖ Hammock area
- ❖ Croquet
- ❖ Firepit
- ❖ BBQ's plus plenty more.

**10% discount for friends & families of local residents.**



## Party Venue

Why not host your next party at Glebe House Cottage?

We have so many options to make your party stand out. Make it a party you won't forget!

- ❖ We can host parties from 15 guests up to 200.
- ❖ Formal garden parties with a marquee
- ❖ Celebrations in our secret cellar bar
- ❖ Fun tailor-made children's parties!
- ❖ "Have a splash with a pool party!"
- ❖ "Birthday, Anniversaries, Christening or any celebrations!"





## GARDENING MATTERS from CRINACOTT

By Mike Godfrey, keen gardener



The weather in August has generally been a lot warmer than previous years, punctuated by brief spells of rain, similar to that in June and July this year. Whilst this has been reasonable for gardeners, plants in pots and newly sown or planted veg and flowers probably needed some additional water on occasions. The warmer than normal spring, which was virtually frost free has created the biggest crop of apples, pears, plums and soft fruit that we have ever seen in the 20 or so years that we have had an Orchard. Even the existing 60+ year old apple and plum trees have done exceptionally well. However, I made a classic mistake, due to work commitments of not visiting the Orchard early enough and thinning out the fruit. Hence, we have an awful lot of small fruit. It is difficult to work full time and garden on this scale, especially at my age. The enthusiasm is there but the energy is not what it used to be. Despite the smaller crops this year, the sheer volume will more than make up for it and we should have plenty of Katy eating apples now and Bramley cooking apples from mid-September. Let me know if you would like some.

My seed germination problems have not been so bad this year but nevertheless still significant. I have added another culprit to my list of suspects "Woodlice". I have set up my wildlife cameras but have failed to see anything, but I have definite evidence that just germinated seed with a couple of small leaves are

are definitely there on the previous evening are totally missing the next morning. I will just have to sleep with them in the polytunnel.

A new problem has arisen this time with my runner beans. I have been growing a bean called "Enorma" for the last 60 years and have always had really bumper crops. They all germinated well in separate pots and were planted out when about 12-18 inches high on the frames either side of the polytunnel central pathway. Right from the start the plants on the east side grew very spindly whereas those on the west side were looking much healthier but neither side had many flowers, which I put down to the extreme polytunnel heat in May and June. As the weeks progressed the weaker plants on the east side began to get mottled leaves, which were eventually turning very pale and in many cases dying, (see photos on page 20).

I spoke to Toby Buckland on Radio Devon and he was somewhat baffled by it but concluded that it was possibly a virus. He suggested that I should spray the effected plant with a diluted solution of milk and water. The theory being that as the milk turns sour it becomes acidic and kills the virus or mould. This seems to have worked but the polytunnel now seems to smell like a cheese factory. On his recommendation, I have now planted some dwarf runner beans, which have germinated already, so I may get a crop after all.

I will give myself 0 out of 10 for my progress in creating a wildlife garden and pond areas. I have resolved to start again, so it is my intention to mow all the grassed **continued on page 20**



Above: my healthy Runner beans



Above: across the path the affected Runner beans looking almost dead

areas very short and maintain that through until next spring. With the grass virtually scalped I will plant out yellow rattle plugs that I will sow shortly and grow on in the polytunnel. The idea being that the larger yellow rattle plants will get established and then help to smother the grasses.

Just a quick update on my battle with the caterpillars and my Brussel sprout plants, they did manage to get onto the ones in the polytunnel but I did

manage to minimise the damage during the main battle which lasted 3 days. During that time, I picked off around 600 of the blighters, followed by around 100 the following day and about 50 the day after. Now the numbers are down to just a few every 2-3 days, and the chickens are wondering where their daily treat is not forthcoming.

**Now here are some jobs that you may need to get to grips with during September:**

- As always, keep weeds under control, don't let them get on top of you. Don't forget the good old Hoe or if necessary, the strimmer to stop weeds going to seed. Remember one year's seeds equates to seven years weeds.
- Don't forget to continue to keep hanging baskets and containers watered, daily in dry weather. By now the nutrients will be becoming exhausted in the compost so add a liquid feed about once a week.
- Similarly with sweet peas feed them with liquid feed about every 7-10 days. To get the best flowering from your plant, cut most of the flowers off once a week and pinch outside shoots and cut the flowers regularly. That encourages upward growth and more flowers.
- Don't forget to continue to pinch side shoots from your tomatoes to focus the growth into the fruits now and to improve ripening. Continue to remove the leaves progressively from the bottom upwards, as the tomatoes start to ripen

**continued on page 21**



## Gardening jobs for this month, if you haven't already done them, continued from page 20:-

up the stem. Also make sure that you give them a dose of tomerite or similar once a week, to obviate magnesium deficiencies

- Make sure that you regularly pick your ripe crops, including all your soft fruit, to get the best from them.
- Similarly make sure that you dead head your flowers, particularly roses to promote new flowers
- If you have any wildflower areas now is the time to cut them right back close to the ground, leave the cuttings on the ground for 2-3 weeks for the seeds to find their way to the ground. Then rake all the cuttings up and compost them. I must remember to do mine.
- Prune summer raspberries and trim back new growth on apple, pear and plum trees to within 3 leaves of last year's growth
- Harvest Sweetcorn when the silky fibres turn chocolate brown
- Propagate strawberries by layering and pegging down the new growth runners into 75mm (3 inch) pots. When they have rooted cut them away from the parent plant.

**If anyone needs to contact me, then please contact me on 01409 253401 or 07798 647041 or by e-mail at : [mikecrinacott1@gmail.com](mailto:mikecrinacott1@gmail.com).**



**PLUMS:PLUMS:PLUMS  
BEAUTIFUL PLUMS!**

**NOT THE COWBOYS**  
A 'RIP-ROARING PARTY BAND'

WILL BE AT  
**PYWORTHY VILLAGE HALL**  
ON SATURDAY 1<sup>ST</sup> NOVEMBER



DOORS OPEN AT 7:30 PM  
LICENSED BAR  
REFRESHMENTS AVAILABLE TO PURCHASE

TICKETS £10 EACH  
AVAILABLE NOW FROM MARIE 01409 254924  
OR ANGELA 07794344117

REGISTERED CHARITY NUMBER 280013



## **“What did Ragwort Ever do for Us?” (Apologies to Monty Python’s ‘Life of Brian’)**

Well, if you are a horse owner or a farmer, then the answer is: not a lot. It is a perennial weed with small, bright-yellow flowers and all parts are toxic to livestock. The toxic chemical it contains attacks the liver in most mammals. Horses will only normally eat it when other grazing has been eaten up, but lots of owners regularly pull it up by the roots and burn it. If it dries out (in hay) or is composted, it is still toxic. People are advised to wear gloves when handling it as we are also susceptible to the poison.

By a miracle of evolution, some species of moth have adapted to its toxin. The classic example is the Cinnabar moth, whose caterpillars (larvae) feed on the ragwort leaves and use the toxin to make themselves poisonous to birds. To advertise this fact (in a “don’t even think about it” gesture!) they are coloured bright yellow with black stripes, a code the birds recognise and leave them alone.

The Cinnabar moth looks very similar to the Six-Spot Burnet which I photographed feeding on the nectar of a clump of ragwort flowers on Summerleaze Downs. Colouring is similar and they are both day-flying moths.

Pyworthy Environmental Group (PEG) will bring you occasional articles like this to highlight the flora and fauna we have in our parish. We are passionate about maintaining our diversity of species and increasing their numbers when they are threatened (e.g. Barn Owls). This is in addition to our role of

monitoring the impact of solar farms in our area and challenging any projects which we deem to be detrimental to the quality of life of our community.

Dr. Reg Godwin, Pyworthy Environmental Group



Above: An adult Cinnabar Moth (photo by unknown)



The Cinnabar caterpillars (photo by Allan Price, Sussex Wildlife Trust)

My photo of the Six-Spot Burnet moths on Ragwort flowers, can be seen on the front cover.



## **M.A.G Double Glazing Repairs**

- ❖ Replacement of misty or broken glass units
- ❖ Replacement of hinges, handles, locks & seals
- ❖ Letter boxes and cat flaps installed
- ❖ Installation of fascias, soffits & guttering

**Over 15 years' experience**



Call MARK for friendly advice and a  
NO obligation quotation.

**Tel: 07969 234161**



## **EVELYN SHARMAN**

**Professional Driving Tuition (DVSA ADI)**

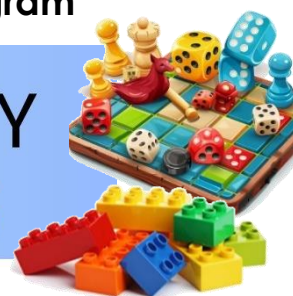
**Telephone: 01409 259848**

**Mobile: 07885 352 082**

**Email: [evelyn.sharman@btinternet.com](mailto:evelyn.sharman@btinternet.com)**



## WHAT'S ON AT HOLSWORTHY LIBRARY – SEPTEMBER 2025



## Library News!

- **Lloyds Bank Community Banking**, Monday 1<sup>st</sup>, 15<sup>th</sup> & 29<sup>th</sup> – 2:00pm–4:00pm.
- **Bounce & Rhyme**, Thursday 4<sup>th</sup>, 11<sup>th</sup>, 18<sup>th</sup> & 25<sup>th</sup> – 2:15pm–2:45pm
- Come along and speak to the **Healthwatch Devon Champions** for support and guidance on local health and social care and to share your experiences with them, Monday 8<sup>th</sup> – 2:00pm–3:30pm
- **Ruby Country Creative Writing Group**, Wednesday 10<sup>th</sup>, 11:00am–12:00pm Places limited so please book with library staff.
- **Gardening Cuppa & Chat**, Wednesday 17<sup>th</sup> – 2:00pm–3:00pm. Everyone welcome.
- **Digital Skills with Learn Devon: Downloading Apps on Your Mobile Device**, Monday 22<sup>nd</sup> – 2:30pm–3:30pm. Free but places are limited. Please book via Learn Devon (library staff can help with booking if you require assistance).
- **Lego and games** for children. Every Saturday – 10:00am–12:00.

**Holsworthy Library** - There are lots of exciting things happening at your local library. In addition to a great range of books you can use your library membership to access free eBooks and audiobooks via the Borrowbox app. We also have free public computers and Wi-Fi as well as printing, copying and scanning facilities. It is free to join the library, and we are a friendly, welcoming space open to all. Free hot drinks are available, and people are encouraged to use the library as a place to relax, work and socialise as well as to find their next great read!

**Opening Hours:**  
**Monday 2pm-5pm**  
**Tuesday Closed**  
**Wednesday 10am-6pm**  
**Thursday 10am-5pm**  
**Friday Closed**  
**Saturday 10am-1pm - Sundays Closed.**



# SIM-Swap Fraud



Devon and Cornwall  
**ALERT**



## SIM-Swap Fraud: What you need to know

SIM-Swap Fraud is a clever and increasingly common type of crime where a criminal takes over your mobile phone number. They do this by tricking your mobile provider into switching your mobile phone number to a new SIM card that they control. Once they have your number, they can access your online accounts and steal your money and personal information.

### How Does it Happen?

Scammers begin by gathering personal information about you from various sources, including social media, data breaches, and phishing attempts. With enough details, they contact your mobile provider pretending to be you. They might do this online, over the phone, or even in a store. Using your stolen information, they pass security checks and convince your mobile provider to transfer your mobile phone number to a new SIM card. Once your number is affiliated to their SIM card, they receive all your calls and text messages. They can then try to log into your bank accounts, emails, and social media. Since many of these services use one-time passwords (OTPs) sent by text message for verification, the scammers can easily receive these codes and gain access to your accounts.

### How to Protect Yourself?

- Add extra security to your mobile account: contact your mobile provider and ask them what additional security you can add. Many providers allow you to set up a unique PIN or password that must be used to approve any changes to your account, whether in store or over the phone.
- **Use Stronger Authentication:** Set up multi-factor authentication (MFA) on your email, social media, and bank accounts. While SMS-based verification is better than nothing, it's vulnerable to Sim-swap fraud. Wherever possible, choose more secure methods like passkeys or authenticator apps (like Google Authenticator or Microsoft Authenticator). Passkeys, in particular, are a great option as they are tied to a physical device rather than your phone number.
- **Review Your Online Presence:** Check your privacy settings on social media to control who can see your profile. Avoid sharing personal details like your date of birth, phone number, and information that could be used for security questions (e.g., your mother's maiden name or the name of your first school).

**Continued on page 26....**

# SIM-Swap Fraud

Continued from page 25....

**Recognize the Warning Signs:** If you suddenly lose service on your mobile phone or receive an unexpected message about a SIM transfer, act immediately. This could be a sign of a SIM-swap in progress.

## Act Fast if You're a Victim:

- **Immediately contact your mobile provider.** Tell them your phone service has been hijacked.
- **Alert your banks and financial institutions.** Call them right away to inform them of the suspected fraud so they can freeze your accounts. You can quickly reach many UK banks' fraud departments by calling **159**.
- **Keep a close eye on all your accounts** (bank, credit card, email, social media) for any unusual activity.
- **Change all your passwords** and, where possible, switch off SMS as an authentication method.
- **Report the crime to Action Fraud.** You can report it online or **by calling 0300 123 2040**.

## Message Sent By

Mick Harrison

(Devon & Cornwall Police, Cyber Protect Officer, Devon & Cornwall)

## Line Dancing!



For more information call Brenda  
on: 01409 253015

## Line Dancing Classes

Our Line dancing classes are held

on: **Mondays** in

Pyworthy Village Hall.

**Complete Beginners:**

5.30pm – 6.30pm.

**Beginners/Improvers:**

6.30pm – 7.30pm &

**Intermediate level:**

7.30pm – 9.30pm.

**Tuesdays:** Intermediate level,

7.30pm – 9.30pm.

**All classes cost just £5.**

**Come and join us!**





## Shapland Accountancy

We are a local long established family run firm with over 40 years experience. We provide Accountancy & Bookkeeping Services throughout Devon and Cornwall.

From small to large companies, Sole Traders, Partnerships, Limited Companies whatever you need, we can help.

Bookkeeping, Tax returns, Payroll, VAT or just advice, contact us to see what we can do for you.

Email Us: [admin@shaplandaccountancy.co.uk](mailto:admin@shaplandaccountancy.co.uk)



Find us on  
**Facebook**



## Bude Jazz Club

The Falcon Hotel, Bude.  
EX23 8SD

**Sundays 8pm – 10.30pm**

**21<sup>st</sup> September 2025**

**Roger Marks & Arthur Browns**

**West Country All Stars**

**Tickets only event £15:**

**Available on club nights or**

**email [joantrewin7@gmail.com](mailto:joantrewin7@gmail.com) or  
with S.A.E. and cheque payable to  
Bude Jazz Club, to Joan Trewin,  
7 The Crescent, Bude, Cornwall.**



**Facebook – Bude Jazz Club**  
**[www.budejazzclub@gmail.com](mailto:www.budejazzclub@gmail.com)**

## No Transport? Need a pickme-up?

### Ring & Ride

- Door-to-door service for all ages
- Wheelchair & scooter accessible

### Cars for Care

- Door-to-door service
- Times to suit your appointments
- 45/50p per mile

### Here for Hire

- Mini Bus Hire for Community Groups & Charities
- £100/day - £65/evening
- Self drive (experience of driving a larger vehicle)

Call

**01409 259001**

[office@holsworthy ruraltransport.co.uk](mailto:office@holsworthy ruraltransport.co.uk)

The Carroll Suite, Holsworthy Memorial Hall,  
Holsworthy EX22 6DJ



## Pyworthy Parish Website is LIVE!

The Pyworthy Post and other parish news and events are now online at: [www.pyworthy-parish.co.uk](http://www.pyworthy-parish.co.uk). The website is continuously developing and we are always looking for new content and ideas, so please visit the website and feel free to contribute either through the links in the website or directly to [info@pyworthy-parish.co.uk](mailto:info@pyworthy-parish.co.uk). You can also reach the website using the QR code.



# Pyworthy Village Show 2025

**Saturday 6<sup>th</sup> September**

**Official opening at 1.30pm.**

**Refreshments available.**



**Buy your programmes from:**

**Marie Heard at:**

**9 Derriton Road. Pyworthy,**

**Anita Burnard at: Amberlea, Pyworthy**

**or**

**Wendy Ward 'Wordona' Derril.**

**Please note that  
entry forms must  
be received  
before 12 noon  
on Thursday 4<sup>th</sup>  
September.**



JOHN SANDERS TRUST



*of Pyworthy Park*

Celebrate with us on  
**Saturday 13th September**

Gates open at 2.00pm

Children's sports start at 2.30pm

*Lots to do for all the family*

*Tug of War • Target Football • Rounders*

*Hoopla • Tombola Fun Bingo • Face Painting*

BBQ • Ice Cream

Teas & Soft Drinks available  
or bring your own beverages

Enjoy an afternoon &  
evening with friends  
of Pyworthy







**Pyworthy  
Village Hall  
presents:**

**THE MAKING OF  
WAR HORSE**

**Friday 3<sup>rd</sup> October at  
Pyworthy Village Hall.**

**7.00pm for 7.30pm**

**Entry £5 per person.**

Light refreshments will be available.

Tickets can be booked by telephoning Marie on:  
01409 254924 or can also be purchased on the night.

**THE MAKING OF WAR HORSE AND OTHER FILMS  
ON DARTMOOR**

Dive into the magic of filmmaking on Dartmoor with our next  
speaker Paul Rendell.

Discover behind-the-scenes secrets from the making of War Horse (2010) and  
other iconic productions like Down to Earth, Gold Digger, and Revolution (1985).

Our speaker, Paul Rendell (aka 'Dartmoor Paul'), will share his unique  
experiences, including his role as an extra in Revolution.

**All proceeds in aid of Pyworthy Village Hall.**

T: 01409 253 533  
www.renewsw.co.uk

Truly  
LOCAL

renew SW  
LTD

DOORS • GLAZING • SOLAR PANELS

MAKE US 1 OF YOUR 3 QUOTES



Accredited MCS  
supplier & installer  
of Solar PV Systems



TRUST  
MARK  
Government Endorsed Standards

certass



Unit 9 Tamar Business Units  
Holsworthy Ind Est, EX22 6HL

**Sign up & help the Village Hall**



**Help us raise  
FREE donations**  
every time you **shop online**

### How to sign up

1. Visit [easyfundraising.org.uk](https://easyfundraising.org.uk)
2. Search for Pyworthy Village Hall and support our cause
3. Raise FREE donations for us when shopping



Scan me

**4,500** online sites will give us a free donation  
when you shop with them - at no extra cost to you!



Over £34 million raised



1.9 million users

Read online at:  
<https://pyworthy-parish.co.uk/>

and view the  
paper in full  
colour.

(don't use a  
search engine)

**SPEED  
LIMIT  
30**



**Postal Voting: "Torridge District Council"** is reminding residents that postal votes must now be renewed every three years to remain valid. This means that anyone who applied for a postal vote before 31 October 2023 will see their vote expire on 31 January 2026. To continue voting by post, affected voters must reapply before this date.

Over 8,000 postal voters in Torridge will be contacted between August and December 2025 with instructions on how to renew. Communications will be sent either by letter or email, depending on the contact details the Council has on file. If you receive an email, it will come from [elections.torridgedc@notifications.service.gov.uk](mailto:elections.torridgedc@notifications.service.gov.uk) with the subject line 'Postal Vote Renewal'.

Renewing your postal vote is quick and easy. You can apply online at <http://www.gov.uk/apply-postal-vote>.

If you prefer to use a paper form, you can request one from the Council's Electoral Services Team."

**Regards - Simon Davies Pyworthy Parish Clerk**





## Pyworthy Poser Quiz for SEPTEMBER 2025

### RANDOM QUESTIONS!

1. Who, or what, is a "Quokka"?
2. The Church towers at Pyworthy & Holsworthy differ in what respect?
3. What rank in the Royal Navy is immediately above that of Captain?
4. Which Premier League Football Club were previously known as "The Dolphins"?
5. What is the a.b.v. strength of Pussers Rum Gunpowder Proof?
6. Who were Barber, Ball & Bik?
7. Allegedly, the oldest Golf Course in England is?
8. How many islands within the Isles of Scilly display habitation?
9. Travelling North from its SW starting point, where does the A39 road begin?
10. How long is a normal year in days?

The answers will be in the next  
Pyworthy Post.

By The Pyworthy Pilgrim

## Holsworthy Food Bank

Thank you Pyworthy for all your recent donations. Donations are always welcome to help those in need. You can donate tinned food, packets or boxes of food. Unfortunately, fresh produce cannot be accepted. Donations can be left in the box at the back of St. Swithun's Church, Pyworthy, which is open every day. Thank you.

Email address: [pyworthy@post.com](mailto:pyworthy@post.com) Telephone number: 01409 478294 Page 33



# Torridge District Council

### Pyworthy Bin Collections



**SEPTEMBER 2025 - Pyworthy Village, other villages may have a different collection schedule.**

**Black bag collection days are:**

**Friday 5<sup>th</sup> September**

**Friday 19<sup>th</sup> September**

**Recycling- Every Monday**

**Boxes/Bags & Food Caddy**

Weekly collection of 2 x boxes & 2 x bags. Weekly collection of food waste in caddy.

**Garden Waste Collection dates:**

**Monday 1<sup>st</sup> September**

**Monday 15<sup>th</sup> September &**

**Monday 29<sup>th</sup> September**

**For more information go to:**

**[www.torridge.gov.uk](http://www.torridge.gov.uk)**

**Or phone:**

**01237 428700**

# The Bell Ringers Outing

By Helen While of Derril

Our local bell ringers  
hired Bert's bright blue coach  
it travelled to Cornwall  
and stopped off in Roche.

The first thing they all did  
was visit the loo  
then went to The White Swan  
and ordered beef stew.

After pints of real ale  
they told a good joke  
when up in the belfry  
a bell rope got broke.

This left Harold swinging  
high up in the air  
so Pete fetched the vicar  
who had quite a stare.

That old bell rope was mended  
and Harold shot down  
his face red with anger  
he wore a huge frown.

This vicar said calmly  
you don't look best pleased  
cross Harold then told him  
when up there I sneezed.

The rear of my trousers  
ripped on a big nail  
and my brand-new brown wig  
it went for a sail.

Now after this story  
Bert's coach journeyed west  
with Tom on the back seat  
in his pink string vest.

He'd done too much drinking  
of strong Cornish ale  
the bell ringers watched him  
his cheeks both turned pale.



You need some fresh air Tom  
the coach pulled up quick  
he leapt out the side door  
and lent on his stick.



In the cool Cornish breeze  
his colour came back  
your face is now rosy  
said Tom's brother Jack.

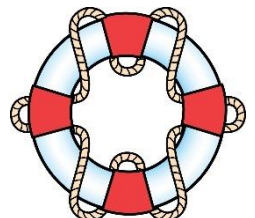


Just twenty miles later  
they reached Mylor Creek  
all sat in striped deck chairs  
and bared their hot feet.



Some went for a paddle  
beneath the warm sun  
the tide flowed in quickly  
which caused them to run.

Well that was a close shave  
one bell ringer said  
big white breakers rolled in  
but where was poor Ted.



Did you know he can't swim  
raged worried old Jock  
and then Ted was spotted  
stuck on a large rock.

They rang up the coastguard  
to launch the life boat  
with loud maroons firing  
the crew were afloat.



**continued on page 15....**

## The Bell Ringers Outing continued

Scared Ted he was rescued  
they brought him ashore  
let this be a lesson  
don't climb rocks no more.

All watched the red sunset  
on wild Cornish foam  
then boarded the blue coach  
to travel back home.

Bert's coach crossed the Tamar  
and headed for Bude  
some went for a Chinese  
to fill up with food.

On leaving the café  
where they ate their meal  
Bert noticed a puncture  
In his right front wheel.

The flat tyre was pumped up  
and Bert motored on  
each bell ringer thanked him  
then broke into song.

they sang a sea shanty  
about the blue deep  
these merry bell ringers  
all fell fast asleep.

When at last safely home  
and snoring in bed  
the bell ringers outing  
raced through each tired head.

The end.

Sweet dreams



## Poetry Corner

# J. Mansell 07896 945889

## General Builder

**General Building, Property Maintenance & Repairs**

**Painting, Decorating, Plastering, Rendering,  
Brickwork, Patios, Concrete, Foundations  
Roofing, Carpentry & Joinery**

**Gutters, Plumbing, Drainage, Cob Conservation,  
Limewash & Lime Plastering**

**Kitchens, Bathrooms, Chimney Lining,  
Stoves & Garden Landscaping**

**Jamescancott@gmail.com**



# Trigon Farm, Derriton, Holsworthy. EX22 6JU

## Forthcoming Events & courses:

Preservation course – 6<sup>th</sup> September

Permaculture course – 28<sup>th</sup> September

Dried flowers wreath workshop – 11<sup>th</sup> October

Christmas wreath workshop – 29<sup>th</sup> November/6<sup>th</sup> December

Christmas table arrangement workshop – 20<sup>th</sup> December

Book today at:

<https://www.trigonfarm.co.uk/book-online>



**Opening hours:**  
Tuesdays, 9.00am till 6.00pm.  
Other day by appointment.



[www.trigonfarm.co.uk](http://www.trigonfarm.co.uk)  
Call Al on Tel: 07988484069

## TORRIDGE DISTRICT COUNCIL - Change is on the horizon for how local services are delivered across Devon

The government wants to abolish two-tier local authorities, where responsibilities are split between county councils, district, city and borough councils, and to replace them with single unitary authorities, bringing all services under one roof. Currently, Devon County Council handles services like education, transport, and social care, while district, city and borough councils manage housing, planning, and waste collection.

Under the proposed reorganisation, a single unitary authority would take on all these responsibilities for a specific area. It means that the number of councils in Devon will be reduced, with district councils and Devon County Council ceasing to exist and unitary authorities, which combine services, formed.

Devon County Council wants to hear from you on what should be considered during the reorganisation of Devon's councils and services, and what matters most to ensure the best possible outcomes for people in Devon in the years ahead.

Your feedback will help shape local policies, services, and investments to reflect the needs and priorities of our community.

You can find the online survey

at: [https://devoncountycouncil.commonplace.is/en-](https://devoncountycouncil.commonplace.is/en-GB/proposals/v3/accessible-survey?step=step1)

[GB/proposals/v3/accessible-survey?step=step1](https://devoncountycouncil.commonplace.is/en-GB/proposals/v3/accessible-survey?step=step1) which will be open until mid-October.

Regards, Simon Davies, Pyworthy Parish Clerk



## Creative Craft Club

The afternoon craft club takes place in Pyworthy Village Hall on the

2<sup>nd</sup> & 4<sup>th</sup> Thursday of each month, at 2.30pm until 4.30pm.

A donation of just £2 towards the hall is all it costs!

Come along and join us, just bring your own craft project to do, & see what others are doing. Plenty of help available, if you have a problem with your craft project.

**Phone Marie on:**  
**01409 254924**

# ARTHUR W. BRYANT FUNERAL SERVICE

CAMELFORD  
**01840 214891**

BUDE  
**01288 352282**

HOLSWORTHY  
**01409 253000**

LAUNCESTON  
**01566 232426**

**INDEPENDENT FAMILY  
FUNERAL SERVICE**

**MEMORIAL MASONRY**

**DIRECT CREMATION**

**PRE PAYMENT FUNERAL PLANS**

**OUR FAMILY CARING FOR YOUR  
FAMILY FOR OVER 50 YEARS**



AWBRYANT.CO.UK  
CARING@AWBRYANT.CO.UK



**Coming to the Village Hall on  
Thursday 18<sup>th</sup> SEPTEMBER!**

## **REMINDER - Potters Fish 'n' Things**

**By popular request, Potters have agreed to set up shop in the Village Hall Car Park, 4.30pm-7.00pm every 3<sup>rd</sup> THURSDAY of each month, for the foreseeable future.**

**To pre order, head to their website:**

**[www.pottersfishnthings.co.uk](http://www.pottersfishnthings.co.uk)**

**OR alternately just turn up on the night.**



Other  
food  
available

# Slimming World taste the *freedom*



Contact your local Slimming World Consultant  
and join a warm and friendly group today!

## NEW VENUE

### Bude

Bude Rugby Club  
Wednesdays  
5.30pm & 7.00pm

### Holsworthy

Holsworthy Memorial Hall  
Tuesdays  
5.30pm & 7.00pm  
Thursdays  
9.00am & 10.30am



[slimmingworld.co.uk](https://slimmingworld.co.uk)

## Pyworthy Post Deadline

The PRINT  
deadline for the  
next Pyworthy  
Post is: Thursday  
25<sup>th</sup> September  
2025 at 9am.

Please email  
your news as  
early as possible.  
Thank you.

View Pyworthy  
Post online in  
colour. Search:  
[https://pyworthy-  
parish.co.uk/](https://pyworthy-parish.co.uk/)

## No Dog Fouling



**Bag it - Bin it**

## Sunrise, Sunset Times for the coming month:



### 1<sup>st</sup> September 2025 (UK, Exeter)

☀ Sunrise time: 6.28am GMT

🌅 Sunset time: 19.58pm GMT

🕒 Length of day: 13 hrs 30 mins.

### 30<sup>th</sup> September 2025 (UK, Exeter)

☀ Sunrise time: 07.13am GMT

🌅 Sunset time: 18.53pm GMT

🕒 Length of day: 11 hrs 40 mins



# New UK Laws Aimed at Protecting Children Online

By Brian Meadows of Nofix-Nofee

Regulating harmful content online came into effect on July 25, 2025. These laws, part of the Online Safety Act, require online platforms to implement measures to prevent children from accessing harmful content, including pornography, self-harm material, and other age-inappropriate content. Key aspects are:

## **Child Protection:**

"Highly effective age assurance" must be applied.

## **Harmful Content Regulation:**

Harmful content, i.e. self-harm, suicide and eating disorders must be monitored.

## **Transparency and Control:**

Greater transparency on content to give users more control over what they see.



## **Enforcement:**

Greater enforcement powers given to Ofcom to regulate content.

## **Age Verification:**

Pornography sites must use robust age verification apps.

## **Parents and Children:**

Parents to have more tools to protect children online.

## **Adult Users:**

Adult users to have more control over available content.

## **Potential for Blocked Content:**

Some websites may be blocked for UK users.

## **Evolving Technology:**

The effectiveness of age verification tools to be monitored.



However, the use of VPNs can bypass age verification measures as logging into foreign websites, and the dark web is relatively easy. Many websites have little care on who views its content only that it brings in advertising revenue.

Some of these regulations may also breach personal data privacy laws and may not be applied as they can breach the data protection act! (that law may need to be changed).

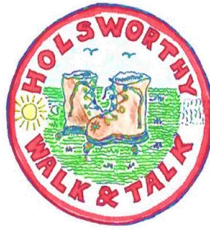
The new laws mean well, but the law of unintentional consequences is apparent.

Talk about locking the stable door after the horse has bolted, the government is so far behind the curve, many of these laws will have no effect on tech savvy kids!! The new laws also affect what you may write on social media any breach of these laws can result in a criminal prosecution, be very careful, voicing a simple opinion can be life changing and you won't just be waving goodbye to freedom of speech.

**For help and advice telephone  
Brian Meadows on 01288 381061,  
Nofix-Nofee Computer Repair  
Services.**

# Holsworthy Walk & Talk Group

By Gill Aston



Why not scan  
our QR code?  
This will take you  
to our website.



A very warm Friday morning last month found both Level 2 and Level 3 walkers meeting at Kilkhampton Football Club. It is always enjoyable when both groups meet together as some walkers who have 'moved' group for whatever reason get to meet up with some of their friends again.

A total of 39 walkers (8 at L2 and 31 at L3) set off alongside the A39 main road to Kilkhampton Church, which is dedicated to St James the Great and has many Norman features, although some parts of the Church are thought to date back 1000 years – the south doorway is the only Norman part now remaining. It was substantially rebuilt by the Granville family in the late 15<sup>th</sup> century. The tower, which is 90 feet high, houses a peel of 8 bells and was completed in 1948 in thankfulness for victory in WWII. Another striking feature, well worth seeing, are the 157 exquisitely carved bench ends.

We walked through the well-kept Churchyard and took West Street, a lane through the village out towards Kilkhampton Common where the Level 2 walkers continued their walk. Level 3 walkers carried on a short way and took a route through a field leading to the remains of a 'motte and bailey' type castle, thought to date back to Norman times with excavations dating it to mid-12<sup>th</sup> century. The castle had two wooden towers rather than just one, which was the usual and which would indicate

that the castle would have been of strategic importance at the time, probably due to its location on a trade route. At one point both groups met up again for a short breather, then the Level 2 carried on across the Common while Level 3 navigated some steep climbs and descents with views making the effort quite worthwhile.

Our Monday Level 1 Walk in the Park had 20 participants one week in August. With Stanhope Park having several seats along the circuit around the park it is ideal for those who only wish or feel able to walk a short distance, take a rest and then either carry on to the next seat, complete the circuit or head back to the Youth Centre for coffee and biscuits. It is an ideal opportunity for anyone wanting to resume activity following injury or illness or indeed formerly active people looking for the opportunity to socialise in a friendly, supportive environment.

If you would like to join us on any of our walks our current programme of walks is available, taking us up to October. Walks start at 10.30 and are **FREE**. Membership forms are available from our Volunteer Walk Leaders prior to the start of the walk.

Our website has lots of up-to-date information, together with our current programme of walks, see details over the page.



***continued on page 41***

## Holsworthy Walk & Talk group report continued from page 40....

### Our September Programme of walks:

# WALKING



Level 2 & 3 walks are every Friday at 10.30am. All these walks aim to be completed in about 90 minutes.

**SEPTEMBER Walks:** Walk starting points as indicated below:

#### Friday 5<sup>th</sup> September – Level 2: MEETH

**QUARRY:** Hard tracks, gentle inclines, no stiles. Donation box in car park. **LEADERS:** Cheryl Collins & Jacqui Shapland. EX20 3ER.

**Level 3: - MEETH QUARRY:** Start from main car park. Hard tracks, some inclines, muddy at times. Donation box in car park. **LEADERS:** Jan Hayward & Kim Harris. EX20 3ER.

#### Friday 12<sup>th</sup> September - Level 2: BUDE -

**EFFORD DOWN.** Start from Bude Tourist Information car park. Hard tracks and paths, some inclines. park charges. **LEADERS:** Michael Heryet & Jacqui Shapland. EX23 8LE.

**Level 3: - BRATTON CLOVELLY.** Start from Parish Hall car park. Lanes, bridleways and fields. Some inclines can be steep. **LEADERS:** Sue Sturmey & Gill Aston. EX20 4JT.

#### Friday 19<sup>th</sup> September - Level 2: HALWILL

**JUNCTION - CHILLA.** Start from Parish Hall car park. Lanes and hard tracks, gentle inclines, no stiles. **LEADERS:** Kim Harris & Barbara Bishop. EX21 5XW.

**Level 3: - BRADWORTHY.** Start from The Square. Lanes, tracks, fields, some inclines. Can be muddy. Cattle may be in fields.

**LEADERS:** Eric Boundy & John Weighell. EX22 7TD.

#### Friday 26<sup>th</sup> September - Level 2:

**HIGHAMPTON.** Start from Windmilland Cross on A3072 between Brandis Corner and Highampton. Lanes, tracks and fields.

**LEADERS:** Mike Jackson & Richard Cook. EX21 5JH.

#### **Level 3: - DUCKPOOL - COOMBE VALLEY.**

Start from NT car park, Duckpool. Lanes, hard tracks, fields. A few steep inclines.

**LEADERS:** Michael Heryet and John Weighell. EX23 9HW.



The photo above shows Jan receiving her Walk Leader training certificate from Jacqui Shapland, our Chairperson.

### Holsworthy Walk & Talk Group contact details:

Our website has lots of up-to-date information, together with our current programme of walks, details below:

[holsworthywalkandtalk@gmail.com](mailto:holsworthywalkandtalk@gmail.com)  
<http://holsworthywalkandtalk.co.uk>

#### Phone numbers:

Gillian Aston 07854677784 or  
Mike Jackson 01409 261196 or  
Paul Davies 07731 626594.



Please keep  
Pyworthy litter free!





# DENISE WELLINGTON

FUNERAL SERVICES

COMPASSIONATE, CARING,  
TRUSTED & PROFESSIONAL

Memorials | Pre-Paid Funeral Plans

24 Hour Contact 01288 359277



Dementia  
Friends  
An Alzheimer's Society Initiative

Golden Charter   
Smart Planning for Later Life

denisewellingtonfunerals.co.uk  
enquiries@denisewellingtonfunerals.co.uk

# DB

WALLING



Cornish Stone  
Wall Specialists

- Dry stone wall repairs
- Retaining dry stone walls
- Stone work with mortared joints
- Earth stone hedging
- Landscaping
- General construction & ground works
- Garden features

## FREE QUOTES

Call Dan on

# 07968 996191



[www.dbwalling.co.uk](http://www.dbwalling.co.uk)

WALLING | LANDSCAPING | CONSTRUCTION

# John Sanders Park Trust

The Trustees of the John Sanders Trust for Pyworthy Park would love to see as many people as possible at the 100 Year celebration of our village park on 13th September. There will be traditional sports day races for children, face painting, a rounders match for all the family, a barbecue and more fun and games.

See more details on the poster in this edition of Pyworthy Post on page 29.

**Advanced notice – our AGM will be held on Thursday 9<sup>th</sup> October in the Village Hall, starting at 7.30pm.**

Anyone who would be willing to volunteer to help on the day or before please contact:

Rob Moores 01409 254192 or  
Jane Oliver on 07500 834620.

The third draw was made after our recent meeting on 3<sup>rd</sup> August 2025, and the winners were:

## **WINNERS of the Park Draw of 2025 are:**

1<sup>st</sup> Prize of £30 – Nigel Palmer  
2<sup>nd</sup> Prize of £20 – Angela Martin  
3<sup>rd</sup> Prize of £10 – Marie Heard.

*Please contact Jane Oliver on 07500 834620, if you would like to buy one.*

**All proceeds after the prizes goes towards the upkeep of the Park.**

## **HOW TO BUY A LOTTERY TICKET:**

There will be further monthly draws throughout the rest of 2025. If you have not yet bought a lottery ticket, they are still available at £10 a ticket.

Please contact **Jane Oliver on 07500 834620**, if you would like to buy one. If you are transferring monies for tickets via BACS, please ensure that Jane has your contact details.

## **BACS Information:**

If you wish to buy a draw ticket and wish to pay by BACS please do so, our Bank account details are below:

Barclays Bank Trustees Sanders Trust Pyworthy Playing Fields  
Sort Code 20-04-59 Account number 10770388

# Derril Water

## SOLAR PARK

By Simon Peltenburg  
on behalf of the Derril  
Water Solar Coop



### Update on Derril Water Solar Park



**Above: Panel installation – work almost completed**

The works at Derril Water are steadily nearing completion as the team are carrying out 'hot commissioning' of the equipment now that there is a connection to the grid. Once that commissioning is completed and NGED (the grid company for the area) have approved the final tests, then the solar park will start to export power to the grid.

In parallel with that work the various communications systems are being set up which will enable remote control of the system and full data acquisition. We will use this data to let the Derril Water Coop members see how much power their solar park is generating.

We are also nearing completion of the installation of the security system which will be remotely monitored 24/7.

As the majority of the ground works have completed, we will shortly level off and reseed the disturbed areas of ground so that the soil is stabilised and the grassland moves towards a more biodiverse composition in accordance with the ecological management plan for the site.

As always, we would like to thank everyone in the community for their patience through the construction phase of this exciting project that is owned by over 9,000 households from across the UK. Please see <https://derrilwater.com/> for more details.





## Useful Local Contacts Your Local Business & Services Directory

**Advertise in the Contacts  
list for just £15 per year!**

**Animal Behaviourist** ..... Spirit Paws, 07851291081  
**Catering, Food & Drink Supplies** ..... Harold Trading Ltd, 01288 381337  
**Chimney Sweep**..... Humphrey Pullar 01409 240138/07984406290  
**Coarse Fishing** ..... Yeomadon Coarse Fishing 01409 253378  
**Computer Repairs** ..... Nofix – Nofee Repair Service, Brian 07534804101  
**Decorating & Property Maintenance** ..... Julian Lapham 07765626069  
**Driving Tuition** ..... Evelyn Sharman 01409 259848/07885352082  
**Double Glazing** ..... M.A.G. Double Glazing Repairs ..... 07969 234161  
**Electrical Contractors**..... Algo Electrical Contractors .....01409 254595  
**Electrical Contractor** ..... Mike Daniel 01288 381342/07977 596772  
**Estate Agents** ..... Kivells 01409 253888  
**Fruit, Veg, Flowers & more** ..... Trigon Farm, Derriton – Al, 07988484069  
**Funeral Directors** ..... Arthur W. Bryant Funeral Service 01409 253000  
**Funeral Services** ..... Denise Wellington Funeral Services 01288 359277  
**Foot Care** ..... Kate Lord: 07557379099 Email: katescompletefeet1@gmail.com  
**Fencing/Garden structures**..... WWW.RUBY-GROUP.CO.UK  
**General Builder** ..... James Mansell - General Builder 07896945889  
**Gun Club** ..... West Devon Air Gun Club, Nigel Palmer, 01409 254133  
**Grass cutting & garden maintenance** ..... Antony Jarvis, 07990016467  
**Heating Engineer** ..... Greg 01409 478198  
**British Hedgehog Preservation Society**.....Bob Gelder, 01409-253791  
**Herbalist** ..... Diana Lee, Registered Medical Herbalist 01409 254450  
**Holiday Accommodation** ... 01288 381272 email: jay@glebehousecottages.co.uk  
**Holsworthy NHS Dental Care** ..... 01409 255525  
**Holsworthy Golf Club**.....01409 253177  
**Holsworthy Library** ..... 01409 253514  
**Holsworthy Medical Centre** ..... 01409 253692 **District nurses** 01409 255134  
**Holsworthy Post office & Sorting Office** ..... 01409 253608/01409 253236  
**Holsworthy Rural Community Transport team** ... 01409 259001  
**Holsworthy Walk & Talk Group** ... Gill Aston 07854677784  
**John Sanders Park Trust** ..... Martin Brennan 01409 691096  
**Line Dancing Group** ..... Brenda Martin 01409 253015  
**MOT & Garage Services** ... Pyworthy MOT Ltd, Simon Martin 01409 254275  
**National Grid (report a problem line)** .... National Grid is on 0800 032 0311  
**Oil Fired boilers & tanks/service & installations** ..... Greg 01409 478198  
**Police** ..... Non-urgent phone calls 101/email [devon-cornwall.police.uk](mailto:devon-cornwall.police.uk)  
**Pyworthy Village Hall** ..... Bookings: Marie Heard 01409 254924  
**Organic Farm, Trigon Farm selling fruit & veg etc** ..... phone Al on 07988484069  
**Renewable Energy/replacement windows** ..... Renew SW Ltd, 01409 253533  
**Round Baling** ..... Stan Hopper 01409 253412  
**Stove Supplier** ..... CBL Stoves, call Carl on 01288381852 [www.cblstoves.co.uk](http://www.cblstoves.co.uk)  
**Therapeutic Treatments** ..... CN Holistics 01288 381201  
**Torridge District Council** ..... [www.torridge.gov.uk](http://www.torridge.gov.uk) 01237 428700  
**Walling & landscaping services** ..... Call Dan on 07968996191 for a quote.

# Algo Electrical



**Domestic ~ Industrial ~ Commercial**

*Electrical Installation; fault diagnosis; consultation & advice, including renewable energy, alarm and security camera systems.*

**Telephone 01409 25 45 95**

**[www.algo-sales.co.uk](http://www.algo-sales.co.uk)**

## Nofix-Nofee

Low Cost Computer Repair Services

**We come to you!**

- \* Home or Office - No Call Out Fee
- \* Email & Broadband Repair
- \* Virus Infection Resolve
- \* System Restore
- \* New System Installation
- \* Refurbished Laptops & PC's
- \* Free Telephone Help & Advice
- \* Hourly Rate and Fixed Fee
- \* Onsite Fix & Repairs

Computer  
Repairs  
from only  
**£25**



**Tel: 01288 381061**

**Mobile: 07534 804101**

**Email: [mail@nofix-nofee.net](mailto:mail@nofix-nofee.net)**

## Laptops for Schoolwork



Refurbished laptops that have been donated by generous customers, may be available to a child in need, for schoolwork.

**Contact Brian Meadows:  
Tel: 01288 381061.**

**Read Brian's article on  
page 37.**



## Save Your Used Stamps for the Hedgehogs!



### *British Hedgehog Preservation Society*

**Macmillan no longer sells used stamps, but Bob has found another very worthwhile charity, who can make use of our stamps.**

**Please Save your used Postage Stamps!**

**Used National & International stamps can be recycled.**

**They will be used to generate income for the**

**British Hedgehog Preservation Society.**

**Simply pop stamps into an envelope and drop off at:**

**9 Shortlands, Pyworthy or  
Sunnymead, Pyworthy.**

**Thank you!**



## Humphrey Pullar Chimney Sweep

NACS Registered

- Professional Chimney Sweeping Service
- Full Brush & Vacuum Service
- Pots, Cowls & Bird guards Fitted.

All types of Appliances & Flues Swept & Serviced.

Traditional & Power sweeping Techniques

Chimney CCTV Surveys/Bird Nests Removed.



**24 Hours Emergency Service**

**Call: 01409 240138 or**

**07984 406290**





# Local Stove Supplier

# CBL STOVES

The Showroom, Unit 5  
Red Post, Bude, Cornwall  
EX23 9NW

01288 381852  
[carl@cblstoves.co.uk](mailto:carl@cblstoves.co.uk)  
[www.cblstoves.co.uk](http://www.cblstoves.co.uk)



- Stainless Steel twinwall flues
- Chimney Lining
- Iskoern Pumice lining
- Fireplace alterations
- Stove Installations
- Wood, Multifuel, Gas & Electric Traditional & Contemporary Stoves & Fires
- Chimney Rebuilds
- Slate, Granite & Glass Hearths
- Wood & Ceramic beams & surrounds
- Floating Shelves



**Showroom Opening Hours:**  
Monday to Friday 9am until 4pm  
Saturday 9am until 2pm

Call us now for a FREE no  
obligation quote on:  
**01288 381 852**

Website: [www.cblstoves.co.uk](http://www.cblstoves.co.uk)  
Email: [carl@cblstoves.co.uk](mailto:carl@cblstoves.co.uk)

## **Pyworthy Parish Council Meeting Summary**

Pyworthy Parish Council held it's bi-monthly meeting on July 24, just missing the deadline for Pyworthy Post, hence the report of the meeting appearing in this month's edition.

A resident made a proposal at the meeting that PPC consider buying a piece of land near Hillsborough Cross. Councillors discussed unauthorised development occurring on the site of which Torridge Council was already aware and resolved to follow up with Torridge on planning enforcement.

Devon County Councillor Lynne Rowsell, who was attending a PPC meeting for the first time, introduced herself. Lynne is very happy for Pyworthy residents contact her on issues DCC has responsibility for, particularly Health and Adult Care which is an issue close to her heart.

Councillors considered two planning applications. The first, for a barn conversion near Thorndon Cross was supported. The second, for amendments to existing drawings for 2 new houses at Derril, Councillors agreed to oppose the application as they considered the application to represent overdevelopment of the site.

Quotes for new noticeboards in two locations were considered. As per previous Pyworthy Post, PPC want to erect a new noticeboard in Derril so that parish events can be promoted and residents here can see agendas and minutes of council meetings. It was proposed that the parish council also replace the existing noticeboard at the front of the village hall so this

can be used to better support the local community. Councillors agreed to fund the new notice boards and work will start once any necessary permissions from DCC/TDC have been received.

Councillors also agreed a grant of £102 for the John Sanders Trust to support the 100 year celebration of the park in September. Notice was given of a proposal to bring maintenance of the park, grass cutting etc under the parish precept. This will be discussed formally at the September meeting.

Councillors asked the Clerk to write to South West Ambulance Trust to voice concerns on their proposal to stop funding the Community First Responders based at Holsworthy Fire Station and replace them with volunteers.

**The next meeting will be held on  
Thursday 18 September at 7.30pm in  
the Village Hall."**

BY Simon Davies, Pyworthy Parish Clerk

### **Other Council notices and information, can be found on the following pages:**

Parish Council contact details –  
see page 13.

Torridge District Council - Postal  
Voting page 32

TDC Refuse collections dates  
page 33

TDC - Change is on the horizon for  
how local services are delivered  
across Devon – page 36.

Sorry the information isn't altogether, but  
it's a very full paper & space is limited.

**SEPTEMBER  
2025**



## **Nature Notes**

**By Bryony Rylett**

John Keats, in his poem 'To Autumn', perfectly encapsulated the essence of the season when he wrote:

*"Seasons of mists and mellow fruitfulness, Close bosom-friend of the maturing sun; Conspiring with him to load and bless, With fruit the vines that around the thatch-eves run; To bend with apples the moss'd cottage-trees, And fill all fruit with ripeness to the core; To swell the gourd, and plump the hazel shells, With sweet kernel..."*

While there are few thatched cottages in the parish of Pyworthy we may experience "mists and mellow fruitfulness" and see "moss'd trees...fruit filled with ripeness to the core" and "plump hazel shells".

Summer has slipped gently into the first month of Autumn and plants and trees are now displaying burgeoning crops of fruit and seeds. This harvest provides vital nutrition for animals, birds and insects in the coming months and is a highly visible example of the complex collaboration in ecosystems and the interdependence of different lifeforms.

We are all reliant on maintaining

maximum diversity in natural systems and while nature can evolve and adapt if changes to our environment are slow, if change is rapid and dramatic or species in the food chain are lost, ecosystems are damaged to the point of no return.

Provided conditions have been favourable, the plants of Pyworthy's woods, fields, hedges and gardens will have reached peak production with fruit and seeds ready for dispersal.



**Above:** A selection of fruit and seeds harvested from the fields and hedges of Pyworthy in mid-August. How many can you identify?

Plants have evolved to maximise successful germination in an array of ways: by wind, water, gravity, ballistic explosions, hitch-hiking and through animals and birds. Small seeds such as Dandelions, thistles, willows and

**continued on page 51**



## Nature Note – SEPTEMBER continued from page 50.....

poplars are distributed by wind while Gorse seeds explode audibly when heated by the sun.

**Lesser Burdock** (*Arctium minus*) and **Cleavers** (*Galium aparine*) have evolved to spread their seed by latching on, Velcro like, to animal hides, fleeces and hikers' socks enabling widespread distribution.

Burdock is a broad leafed, vigorous growing plant favoured, in the past, by landscape artists needing to add colour and perspective to the foreground of their works.

This began with Dutch artists in the mid-1500s and continued with Gainsborough and Stubbs.

Victorian polymath John Ruskin observed this artistic trend saying:

*"The principal business of that plant being clearly to grow leaves wherewith to adorn (painting) foregrounds. When the extending space of a leaf is to be enriched with the fullness of folds, and become beautiful in wrinkles, this may be done either by pure undulation as of a liquid current along the leaf edge, or by sharp 'drawing' – or 'gathering' I believe ladies would call it – and stitching of the edges together."*

The Tate's Turner Bequest holds a sketchbook study by J.M.W. Turner titled: 'Study of The Leaves of Burdock' circa 1799-1800.

The 17th century herbalist Nicholas Culpeper wrote of Burdock as being known to small boys who would throw the bur-like buds and flower heads at one another when playing.

The tenacious habit of Burdock has earned it the nicknames Bachelor's

Buttons and Sticky Buttons.



**Above:** A Buff-tailed Bumblebee (*Bombus terrestris*) on a Burdock Flower showing the flower's purple florets and hooked bracts.

Burdock roots blended with Dandelion roots have been used since the Middle Ages to make a beverage. This was originally a light mead-style drink. It has evolved over centuries into the carbonated, soft drink we know today.

The juice of Burdock root was said to counteract snake and rabid dog bites and to soothe burns; the leaves could be applied to ease sores and ulcers and the seeds eased sciatica.

Cleavers, another plant with hitching seeds, is a member of the **Rubiaceae** plant family that includes Coffee and Madder and is found in temperate zones worldwide.

**Continued on page 52**

## Nature Note – SEPTEMBER continued from page 51.....

It is known by many colloquial names including: Cling Rascal, Mutton Chops, Pigtail, Beggar's Lice, Kiss-Me-Quick and Sticky Willy. The RHS records 34 common names for this plant.

The seeds of this native annual are formed from two halves, covered in stiff, hooked hairs that cleave to passing mammals.

It had many uses in the past including: as a slimming aid, due to its diuretic properties; as a cleansing herb for kidney and urinary problems, for skin conditions, such as eczema, by lacemakers, to enlarge pin heads; woven into sieves to strain impurities in milk, as a curdling agent in yogurt and cheese-making and for stuffing mattresses due to its resistance to compression.

The practice of throwing handfuls of cleavers onto the clothing and hair of the unsuspecting is as old as time.

In 1578 Rembert Dodoens in his 'A Neive Herball or Historie of Planties' wrote:

*"All the herbe, his branches, leaves and seeds do cleave and stick fast to everything that it toucheth."*

All flowering plants grow seeds in one form or another resulting in a variety of structures, shapes and sizes.

The seeds of fruiting plants are often hidden in a nutritious coating to encourage animals and birds to eat them. The seeds, eaten with the fruit, pass through digestive systems transporting the seeds further than gravity alone could do.

Plants have evolved to maximise their ability to germinate and multiply. The

The fruit and seeds they produce attract specialist feeders. The beaks of Finches and Tits, for example, enable them to source food (Thistle, Dock and Rosehips) unpalatable to other birds. These specialisms are known as 'resource partitioning'.

Most birds active by day rely on sight as their primary sense for sourcing food. Their colour vision is superior to humans. The majority of mammals are **dichromats**, seeing just two primary colours. Cows and dogs are **monochromats** seeing just one colour. Humans are **trichomats**. The addition of red added to our visible spectrum is thought to help us better detect the ripeness of fruit.

Most birds are **tetrachromats** with ultraviolet in their receptors. Wood pigeons are **pentachromats**, seeing five primary colours.

These visionary abilities have evolved alongside plants to the mutual benefit of both.

Thrushes use their vision to distinguish between hawthorn berries, rich in sugars, from those loaded with fat. In the late afternoon thrushes will choose to eat from shrubs bearing slow release, fatty berries to help them survive cold nights. In the morning, they will choose berries rich in sugar to provide quick release energy.

Waxwings rely on Rowan berries in the winter and as Rowan trees are often used in urban landscaping schemes it is not unusual, in years when Waxwings visit the UK, to see them gathered in places like supermarket car parks.

Other plant and bird species with a mutually beneficial relationship include Mistletoe and Mistle Thrushes.

**Continued on page 53**

## Nature Note – SEPTEMBER continued from page 52.....

The seeds of parasitic mistletoe plants are protected by a gelatinous coating that sticks to beaks. While attempting to dislodge these deposits, thrushes rub their sticky beaks against tree bark unwittingly 'planting' the mistletoe seeds.



**Above:** A Green Bottle Fly (*Lucilia sericata*) feasting on a juicy blackberry.

Now is the time of year you may be fortunate to spot shy Jays (***Garraulus glandarius***) stashing acorns for winter food. Individual birds can distribute up to 5,000 acorns a year ensuring they are spread much further than gravity alone could do.

As Paul Whitehouse's enthusiastic, Mancunian teenager character in *The Fast Show* might say: "*Nature's brilliant isn't it? Fruit, seeds, burs, birds and that...*"

The answer to August's Nature Notes Question: **Édith Piaf**

This month's question:

**Haycorns are the favourite food of which fictional character?**

**The answer will be in October's edition of Nature Notes.**

## SEPTEMBER ANNIVERSARIES:

**40<sup>th</sup> Anniversary, 1<sup>st</sup> September 1985** - the wreck of the Titanic was found. Famously sinking in the North Atlantic in 1912 after striking an iceberg. The Titanic remained undiscovered at the bottom of the ocean for over 70 years. In 1985, an American-French expedition discovered the site of the wreckage 400 miles east of Newfoundland and 13,000 feet below the surface of the water. An experimental submersible captured images of the doomed liner for the very first time.

**110<sup>th</sup> Anniversary, 6<sup>th</sup> September 1915** - The first tank was produced known as 'Little Willie'. The world's first tank rolled off the production line in England on this day in 1915. Although it struggled to perform correctly, the creation of an armoured fighting vehicle heralded a new age of battlefield weaponry that changed the course of warfare forever.

**359<sup>th</sup> Anniversary, 2<sup>nd</sup> September 1666** - the Great Fire of London started Shortly after midnight, in a bakery in Pudding Lane near London Bridge. Strong winds helped it spread quickly, and it wasn't long before it had turned into a firestorm. Four days later, it was finally brought under control. In total 13,000 houses had burnt to the ground, but miraculously only six people were killed.





**Print deadline for the next edition of Pyworthy Post is:**  
**THURSDAY 25<sup>th</sup> SEPTEMBER 2025**  
**at 9am prompt!**

**Diary dates this month:** *(Dates & events were correct at the time of printing)*

**Holsworthy Walk & Talk group enjoy a walk every Friday, see their programme on pages 40 & 41. Also, members take a short walk in Stanhope Park on Mondays.**

**Saturday 6<sup>th</sup> September – Pyworthy Annual Village Show**, more details on page 28. Programmes still on sale. Enters must be in by 4<sup>th</sup> September 12 noon.

**Saturday 6<sup>th</sup> September** – Trigon Farm, Preservation Course, see page 36.

**Monday 8<sup>th</sup> September** – Evelyn's Walks group will meet at the Church in Halwill **NOT** Halwill Junction. See page 14.

**Friday 12<sup>th</sup> September** – Social evening in the Village Hall – doors open at 7pm.

**Saturday 13<sup>th</sup> September** – Pyworthy Park celebrations – it's 100 years old!

**Thursday 18<sup>th</sup> September** – Pyworthy Parish Council meeting, 7.30pm in Village Hall.

**Thursday 18<sup>th</sup> September** – Fish n Things Food Van will be in the Village Hall car park 4.30pm til 7.30pm.

**Sunday 21<sup>st</sup> September** – Bude Jazz Club presents: Roger Marks & Arthur Browns West Country All Stars, see page 27 for information.

**Wednesday 24<sup>th</sup> September** – Village Hall meeting at 7.30pm in the Hall.

**Friday 26<sup>th</sup> September** – Social evening in the Village Hall – doors open at 7pm.

### **Forthcoming Events:**

**Friday 3<sup>rd</sup> October** – talk on the making of The War Horse film in Village Hall.

**Saturday 1<sup>st</sup> November** – “Not the Cowboys” band appearing at the Village Hall. See page 21.

**Saturday 29<sup>th</sup> November** – Church Christmas Fair, in the Village Hall – more details next month.

**Friday 19<sup>th</sup> December** – “Joy Machine” entertain in the Village Hall.

### **Swing Republic SW**



Feel the joy of Lindy Hop  
Come and join our new Beginners Classes  
Starting on Thursday 11th September 7- 9pm  
At Pyworthy Village Hall  
£10 for 2 hours of tuition drop in  
or a September pass for only £20

Join our friendly Swing Republic SW  
Facebook Group for updates



**Left: New dance class starting on the 11<sup>th</sup> September.**



# RUBY

WWW.RUBY-GROUP.CO.UK

CLADDING | GATES | PLANTERS |  
FENCING | PERGOLAS & MORE

BUILD YOUR  
**BESPOKE**  
DREAM GARDEN



SCAN ME



CLADDING

01409 231 763

GATES

## WHY RUBY?

- ✓ MANUFACTURED IN HIGHAMPTON
- ✓ BESPOKE BUILD AVAILABLE
- ✓ FAST DELIVERY
- ✓ MADE TO MEASURE

FENCING

PLANTERS

PERGOLAS



Your Local  
Team

KIVELLS

www.kivells.com



Kivells have served Holsworthy, the surrounding area and its community since 1885 and we are passionate about property. We know our local areas intimately and our dedicated staff strive to offer the best customer service in the industry.



## Holsworthy

Kivells Property Suite  
Market Square, New Market Road  
Holsworthy, Devon  
EX22 7FA  
01409 253888  
holsworthy@kivells.com



**Jack Alford**  
Valuer



**Mark Kivell**  
Office Manager



**Daniel Stokes**  
MNAEA  
Director



**William Branton**  
Sales Negotiator



**Enya Garrett**  
Property Secretary

