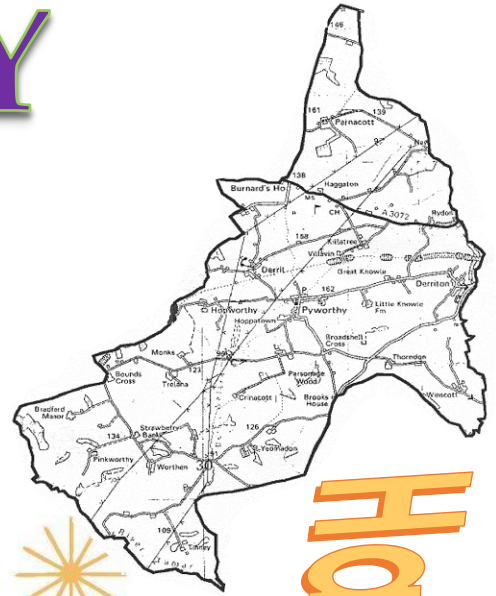


# PYWORTHY POST



Happy New Year Pyworthy!

## What's in your paper this month?

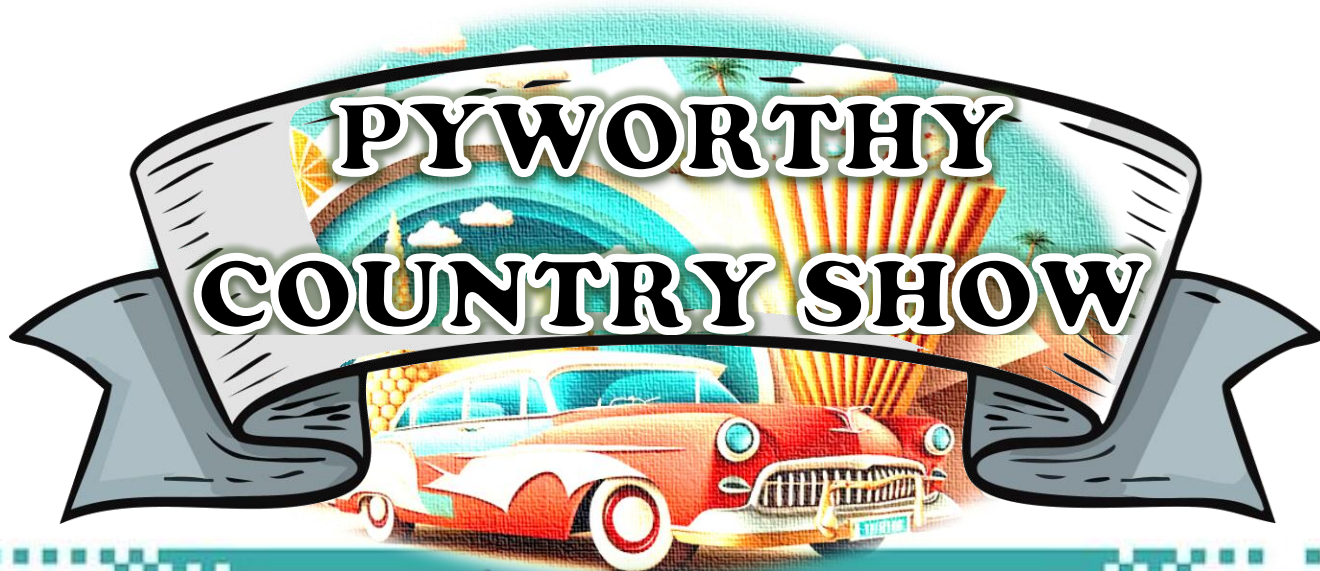
NEW series – featuring monthly potholes!  
Club reports, forthcoming local events, plus much,  
much more .... turn the page and come inside.



Read online at:

<http://www.bit.ly/postpy> or  
<https://pyworthy-parish.co.uk/>  
and view the paper in full colour.

January 2026  
Issue number 347



**"Show with a View"**

**13<sup>th</sup> & 14<sup>th</sup> June 2026**

**Derriton Road, Pyworthy  
EX22 6JY**

**Featuring:**

- |                             |                             |
|-----------------------------|-----------------------------|
| ❖ <b>Auto Jumble</b>        | ❖ <b>Stationary Engines</b> |
| ❖ <b>Classic Motorbikes</b> | ❖ <b>Tractors</b>           |
| ❖ <b>Classic Cars</b>       | ❖ <b>Horticultural</b>      |
|                             | ❖ <b>Food &amp; Bar</b>     |



**Supporting  
Parkinson's Devon**

**More information to follow.....**



## Welcome to the JANUARY Edition



By Marion Ravn

I hope you all have had a wonderful Christmas. We now look forward to the New Year ahead of us.

Reg Godwin has started a witty new series featuring local potholes. Potholes of course are no laughing matter, but a hazard we all face in our daily lives and can result in expensive repair bills. Reg has been endeavouring to get this month's pothole repaired by the council, but without success to date. It's near the tunnel at Hopworthy and is one of the worst locally - unless you know different!!! See page 29.

Lots of interesting reports & articles again this month, thank you all for your input.

In the summer we have a Country Fair being hosted near Pyworthy. See the poster opposite for more information.

**Please keep the news & reports coming in.**

**Email: [pyworthy@post.com](mailto:pyworthy@post.com)**



**Could you help with delivering the  
Pyworthy Post at the end of  
January, February & March?**

**2 small rounds – do 1, or both.**

**Winscott area, 4 papers &  
West of Derril starting at Cob Tree  
Cottage, 8 papers.**

**Please phone Marion on:  
01409 478294.**

## Page Index:

2. Summer event for your diary
3. Editors welcome & page Index
- 4/5. Church News & Church service information
- 6/7. Village Hall news, events and clubs' information
8. January Birthdays
- 10/12. My Electrical Industry Recollections by Mike Godfrey
13. Places to visit in Devon
14. Pyworthy Parish Council meeting summary & contact details
15. Sponsor's page & thank you message from Hedgehogs
- 16/17. Pyworthy People & sunrise & sunset times
18. Men's Skittles Team, Burns Night & sponsor's page
- 19/20. Gardening with Mike Godfrey
21. Evelyn's Walks group report
22. Friend to St. Swithun's
23. Sponsor's page
24. Holsworthy Library – what's on in January
25. Scam Alert
26. Sponsor & Dancing Classes
27. Sponsor's page
28. 2 Thank You messages
29. Pothole monthly
30. Holsworthy Tree Festival, Pyworthy Tree
31. Devon Library Services message, Holsworthy History Society & Easyfundraising
32. **T.D.C. BIN collection dates & recycling tips**
33. Computer News
34. Sponsor's page
- 35/37. My COVID Diaries Part 4 & Holsworthy Food Bank
38. Slimming World
39. December Poser quiz answers
- 40/41. Holsworthy Walk & Talk group
42. Sponsor's page
43. John Sanders Park Trust draw
44. Creative Crafts Club & Potters Fish n Things info.
45. Business contact page
46. Sponsor's page
47. Save your stamps for Hedgehogs & Sponsor's page
48. Sponsor's page
49. January Poser Quiz & Rural Art Group
- 50/52. January Nature Notes series
53. January anniversaries & Poetry corner
54. Dates for your Diary
- 55/56. Sponsor's pages.





By Liffy Lowes, on behalf of St. Swithun's Church

Two months ago, I wished you all a very happy Christmas and a peaceful New Year because I had the idea that I wouldn't be writing another newsletter before January. Well, I got that wrong, didn't I? So, I have the pleasure of wishing you all good wishes for Christmas and New Year again.

With the run up to Christmas we have had quite a lot going on at St Swithun's as you might expect. Last month's Post just missed out on the Christmas Fayre held on November 29<sup>th</sup>. At 11.00am prompt, the Fayre was opened by the Town Crier from Holsworthy in good voice. Once his speech was over, things became very busy. I was on the cake stall; this is always chaotic for the first 20 minutes or so and then calms down. We had so many cakes, plus jam, pickled onions and chutneys; people are so very generous every year and we always have plenty to sell. I usually find myself hoping that something is not sold because I really want it! Most of the stalls did well and the Fayre itself made over £1100, slightly more than last year. For all of this, we have to thank Janet, who is a wonderful organiser, long may she go on doing it!

The following day, November 30<sup>th</sup>, was the turn of our church to host the benefice service which happens every time there is a fifth Sunday in the month. A well-filled church heard all about the Mothers' Union. Like me,

many of you probably picture a group of elderly ladies in grey cardigans drinking tea. This is not so. The Mothers' Union has a fair amount of clout in quite high circles and over the years has managed to achieve a lot of aid in countries which really need it; much of their work is done amongst the poor in Africa. The lady who spoke to us was very interesting and gave us much insight into the work of the Mothers' Union.

On December 7<sup>th</sup>, St Swithun's held the annual Christingle which this year was led by Mel. She was apparently extremely nervous, but you would not have known it, the service ran very smoothly. As usual, the children brought so many presents with them. These were taken to the Women's Refuge in Barnstaple; the refuge was delighted to have them. I am under the impression that there are always children there over Christmas which seems so sad to me, but, on reflection, these children and mothers are probably safer there. I hope they have as happy a Christmas as the youngsters in our village. During the service, two youngsters playing the piano for us; one of them played the music for "Away in a manger". They played beautifully and everyone really enjoyed them; it's so good to have such young talent in our village. The whole church was really delighted to have Tilly and Bryn play.

On December 21<sup>st</sup> we have a Carol/Crib service, Gill will report on this next month. I am going up to Scotland on the 19<sup>th</sup>, to spend Christmas with my family. So, once again I wish you a truly peaceful New Year. And may God go with you all and those whom you love.

Liffy



# United Benefice of Holsworthy

Rector: Revd Alison Hardy, Churchwarden: Alison Davies & Liffy Lowes



## Benefice Services for JANUARY

<http://www.holsworthybenefice.org.uk/services/benefice-calendar/>

### Worship and Prayer in the Holsworthy Benefice – JANUARY 2026

Date	Bridgerule	Holsworthy	Pyworthy	Hollacombe
Sunday 4 <sup>th</sup> January	<b>11.00am</b> Sung Eucharist	<b>9.30am</b> Sung Eucharist	<b>9.30am</b> Family Service	<b>9.30am</b> Holy Communion
Sunday 11 <sup>th</sup> January	<b>11.00am</b> Morning Prayer	<b>11.00am</b> Christmas Memorial Service	<b>9.30am</b> Sung Eucharist	<b>3.00pm</b> Christingle Service
Sunday 18 <sup>th</sup> January		<b>11.00am</b> Sung Eucharist		<b>9.30am</b> Holy Communion
<b>9.30am Pancrasweek</b>				
Sunday 25 <sup>th</sup> January	<b>11.00am</b> Sung Eucharist	<b>9.30am</b> Sung Eucharist		<b>9.30am</b> Holy Communion

Pyworthy Church is open daily. We have a collection box for the Holsworthy Food Bank at the back of the church for donations.



Please keep our beautiful graveyard clean. Please pick up after your dog.

### Church Bookings

To book a Wedding, a Christening, or a Funeral, or for anything else, please contact: Revd Alison Hardy, email:

[reverendalisonhardy@gmail.com](mailto:reverendalisonhardy@gmail.com)

Tel: 07780295752.

Benefice administrator:

Libbi York – email:

[Holsworthybenefice@icloud.com](mailto:Holsworthybenefice@icloud.com)

Tel: 07717750198.



## Pyworthy Village Hall News

### Martin Brennan, Chairman

We hope everyone had a wonderful Christmas and enjoyed some well-deserved rest. As we step into the New Year, let's embrace fresh opportunities, new challenges, and continued success together. Wishing you all a fantastic year ahead filled with joy, love and positivity!!



If you have any ideas or suggestions for events this year in the Village Hall, please get in touch.  
Contact Martin at: [mbrennan598@gmail.com](mailto:mbrennan598@gmail.com)

# Curry Night

**There will be a Curry Night at the Village Hall in March – more details to follow!**



### Potters Fish n Things

Just to let you all know that Olly will be at the Hall on the **Third Tuesday of each month this year**. The first evening of 2026, will be **Tuesday 20<sup>th</sup> January**.

**For further details see page 44.**

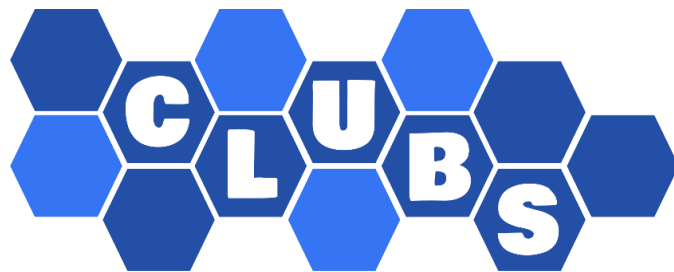
### Dates for your Diary

Village Hall Meeting

**Our next meeting is on Wednesday 28<sup>th</sup> January at 7.30pm.  
Please feel welcome to join us.**

**See page 31 for easyfundraising.  
How you can help our Village Hall,  
while you shop online.**





## What's on at the Pyworthy Village Hall.....

**HAPPY**  
*New Year*

**Mondays:** Line Dancing Club:

**Complete Beginners:**

5.30pm – 6.30pm

**Beginners/Improvers,**

6.30pm – 7.30pm

**Intermediate, 7.30pm -9.30pm.**

**Tuesdays:** Rural Art Group,

2.30pm – 4.30pm.

**Tuesdays:** Line Dancing Club,

**Intermediate, 7.30pm -9.30pm.**

**Tuesday evenings:** Men's Skittles

Team. Playing at home & away.

**Wednesdays:** Beginners Ballroom dancing & Latin class, including Sequence dancing 7.30pm – 9.00pm.

**Thursdays:** Gill's Golden Gang,  
10.00am – 11.00am.

**Thursdays:** **Coffee Mornings** –  
1<sup>st</sup> & 3<sup>rd</sup> Thursdays of each month,  
From the **15<sup>th</sup> January**. Starting at  
11.10am. Everybody welcome!

**Thursdays:** **Creative Craft Club** –  
2<sup>nd</sup> & 4<sup>th</sup> Thursdays of each month,  
from 2.30pm until 4.30pm.

## Village Hall Pub Nights!



This month our Social Evenings are:

**Fridays 9<sup>th</sup> January &  
the 23<sup>rd</sup> January**

Don't forget to come along and join us for Beer or whatever takes your fancy and perhaps have a go at our next '**Play Your Cards Right**' session on **Friday the 9<sup>th</sup>**, starting off at £100.00.

Why not come and join us for a friendly chat and a drink. Who Knows It Could Be Your Lucky Night!!

**Doors/Bar Opens  
at 7pm until late.**

**Everybody is welcome, come along and have a good time.**



# WHO'S CELEBRATING THIS MONTH?

## BIRTHDAYS

### JANUARY

3 <sup>rd</sup>	Alice Durant
6 <sup>th</sup>	Paul Giles
7 <sup>th</sup>	Jan Spencer
8 <sup>th</sup>	Irving Cleave
9 <sup>th</sup>	Gill Johns
10 <sup>th</sup>	Peggy Kirkwood, Corban Goldsmith
11 <sup>th</sup>	Colin Jennings
15 <sup>th</sup>	Dexter West
16 <sup>th</sup>	Nicola Gardiner, Jesse Richardson
18 <sup>th</sup>	Anita Burnard, Miles Rubery
19 <sup>th</sup>	Mike Godfrey, Nula Robinson
20 <sup>th</sup>	Rachel Martin
21 <sup>st</sup>	Maryl Steyn
22 <sup>nd</sup>	Andrew Gowing
23 <sup>rd</sup>	Marion Ravn
25 <sup>th</sup>	Ashley Buse
26 <sup>th</sup>	Carla Whitaker
28 <sup>th</sup>	Meriel Lock



#### Community Birthday list

New Residents of Pyworthy Parish, please feel welcome to add your birthdays to our community list.

### SPECIAL BIRTHDAYS AND FAMILY OCCASIONS



Wishing all those residents with a January birthday,  
"Many Happy Returns!"

Special birthday messages are free.



Join

# Gill's Golden Gang

Strength & Balance Exercise Class

for the over 55's!

Held at:

HAPPY  
NEW YEAR

Tuesday: Holsworthy  
Scout Hut

10.30am to 11.30am &  
12 noon to 1.00pm.

Thursdays: Pyworthy  
Village Hall

10.00am to 11.00am.

Halwill Baptist Chapel  
Hall

12.45pm to 1.45pm.

Contact Gill Aston on: 07854677784  
for more information.

*Coffee Morning*



## VILLAGE HALL COFFEE MORNING GROUP

**Come along and join us at**

**11.10am on:**

**Thursday 15<sup>th</sup> January.**

**We usually meet on the 1<sup>st</sup> & 3<sup>rd</sup>**

**Thursdays of each month.**

**Meet new friends, enjoy a coffee,  
and have a good chat.**

**For more information phone:**

**Brenda on: 01409 253015 or**

**Marie on: 01409 254924.**

**Now held in the main Village Hall.**



**NEW MEMBERS ARE  
VERY WELCOME!**

# My Electricity Industry Recollections

Episode 12

## Kingsnorth the Jinxed Power Station

By Mike Godfrey



Kingsnorth was the only dual fired Power Station being built at that time. This gave it the advantage that it could burn either oil or coal depending on which fuel was cheaper on the day. Along with that came more complications and things to go wrong than a plain straight forward oil or coal fired power station as the other 9 being built around the country were. Most were coal fired but two next to oiling facilities Pembroke and Fawley were oil fired.

To give you an idea of the scale of the problems we faced at Kingsnorth, the station was due to be officially opened 18<sup>th</sup> April 1975 by the Secretary of State for Energy Mr Eric Varley and many more dignitaries (hangers on). In the weeks preceding this date we were running quite nicely with all 4 Units on delivering 2,000,000kw to the Grid and then one by one the Units tripped off with various serious faults, until we were left with just one Unit running. The afternoon before the Ceremony was due to be held, that also tripped off with a boiler tube fault. There were no quick fixes, so the Ceremony went ahead with the Station completely silent!!

Virtually every day I would be confronted with a fault but mostly numerous faults which had or were about to trip one or more of the Units. I can remember being called to a switchgear fault which was supplying generator cooling water pump. The Unit was at full load running for the

morning peak load. The temperature on the generator was rising and getting closer and closer to the high temperature trip level as each minute passed. I quickly found the fault but there wasn't time to change the part, so I put my foot into the switchgear panel and closed the switch with my foot, and the additional cooling water pump started. The generator temperature came back under control, and I stayed like that holding on to the sides of the panel with another Engineer supporting me from behind for the next hour or so. The morning peak demand diminished, and we could drop back to half load on the generator, and I could release the switch and carryout the necessary repair before the demand increased again for the teatime peak. I was praying throughout my ordeal that I would not get cramp in either or both of my legs!

Inverters are very commonplace today, throughout industry particularly as motor drives but also very commonly used to convert the DC from Solar Panels to mains 230v AC. Back in the 1970's they were a pretty new invention and very crude and Kingsnorth had 4 such machines, one for each Unit. They were in a cabinet 2 metres high and about 1 metre wide.

***continued on page 11...***



## Kingsnorth the Jinxed Power Station continued....

Its output was about 1kw unlike the very compact designs of today. They were prone to mis-commutating, which effectively put a short circuit on the output. I was called to sort out this particular inverter, which had an irregular output. I was carrying out some tests with my meter when it gave an almighty cough and mis-commutated launching the capacitors and half the contents of the panel straight into my lap. It was not a pleasant experience, particularly the contents of the large electrolytic capacitors.

It was the morning peak in January, and I was walking alongside the turbo-generators, which were all at full load. I got to the first generator (Unit 1) and I noticed a pipe which looked like it had been painted white. I thought to myself "why has that been done"? I then realised that it was a pressure line pipe containing a highly explosive mixture of hydrogen and seal oil and it wasn't white paint but actually it was glowing white hot and about to melt and explode, which in turn would cause the generator filled with 4 bar hydrogen to create a massive explosion, probably taking me with it. I got on my radio to the control room staff and said, "No 1 is about to explode - button (trip) it immediately", which they did. Just as they did that, Unit 4 at the other end of the Turbine Hall (engine room as I used to call it), tripped off as well on a boiler drum level fault. We had effectively taken 1,000,000kw off the Grid System in a matter of seconds. I bet the Grid Control Engineer jumped out of his



Above: Kingsnorth lit up at night

chair that morning as the system frequency dropped back significantly. Virtually every back up Gas Turbine Generator in the south of the Country would have started automatically, filling the gap and saving the day. Most of these plants are now gone and have not been replaced, so what would happen now. After the event I came to consider how dangerous a situation I had been in, I don't think I would hang around next time. The fault that nearly lost a generator was caused by someone leaving out a small piece of insulating material in the pipe connection costing about 20 pence.

I seemed to always be in the right place when something was going wrong. On this occasion I was walking from Unit 4 end of the Turbine Hall, when I heard a noise like a V1 rocket. I quicken my pace to a run to be confronted by a very large flame coming out of the back of Unit1 generator, shooting right across a 15-metre-wide loading bay and literally hitting the back end of Unit 2. Again, I got onto

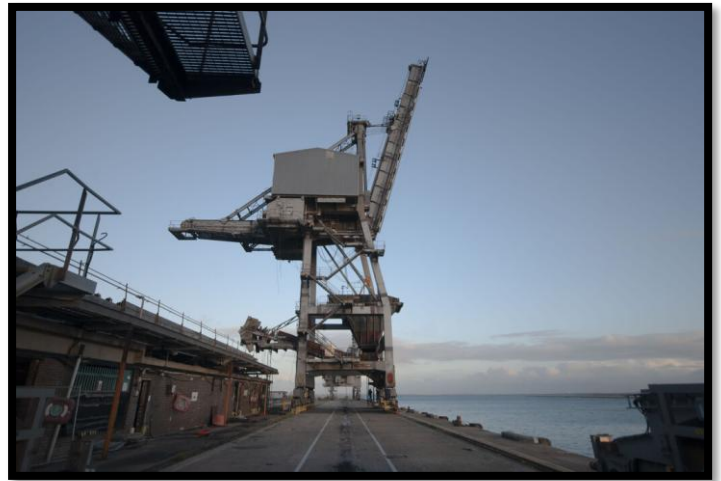
**continued on page 12...**

## Kingsnorth the Jinxed Power Station continued....

radio and told the Control Room Engineer to button Unit 1, it was on fire but apparently still on full load. With due haste, I made my way to the seat of the flame. To my complete amazement the copper bars, which were 150mm x 25mm x 5000mm had completely vaporised along with all the generator connections and all the aluminium casing that had surrounded it all. This fault was caused by a bad joint because the relatively soft copper had “flowed” under the pressure from the connecting bolts. Because of the cross-section of the connections, it was not possible to measure the resistance of each joint. We had to rely on feeler gauges and engineers blue to check that it was a good connection capable of carrying 13,000 Amps.

Unbelievably, a year or so later I was again walking along the Turbine Hall from Unit 4 when I heard the V1 rocket sound and I immediately knew what it was, I ran towards Unit 1 only to find it was Unit 2 on fire with its flame hitting Unit 1 this time. However, the result was exactly the same. This particular fault was really due to the weakness in design and a lack of technological equipment to satisfactorily test each joint. This fault condition was eliminated when all the generators were replaced.

**Next time  
more tales of  
woe from  
Kingsnorth**



Above: Kingsnorth coaling crane  
250 feet high



Above: a typical able tunnel under a  
power station



Above: a typical  
power station cable  
tunnel





## Places to visit in Devon over Christmas & the New Year:

### **Victorian traditions at Knightshayes near Tiverton – until 4 January 2026.**

Experience a Victorian Christmas at Knightshayes. Explore the ground floor of the decorated house, discover different Victorian traditions and create wonderful festive memories.



© National Trust Images, Tony Cobley



Photo credit: Kazuaki Koseki. Title: Solitary tree

### **Earth Photo exhibition at Forestry England Haldon – daily until 19 March 2026.**

Forestry England's outdoor exhibition showing images from Earth Photo shortlisted works continues daily and is free to visit.

Created in 2018 by Forestry England, the Royal Geographical Society (with IBG) and Parker Harris, Earth Photo is a world-leading programme engaging with still and moving image makers to showcase the issues affecting the climate and life on our planet.

The outdoor exhibition displays a selection of the images submitted by photographers from around the world including the melting sea ice of Greenland and the vanishing oases of Morocco.

### **Snowdrop Festival at The Garden House – Fridays, Saturday and Sundays from mid-January until mid-March 2026.**

Visit The Garden House near Yelverton for its first joyful seasonal event of the year – it's the Snowdrop Festival.

Expect to see more than 350 varieties of snowdrops to spot making it one of the most diverse collections of named and naturalised snowdrops in the UK.



**More information is available at:**

**[www.nationaltrust.org.uk/visit/devon/knightshayes](http://www.nationaltrust.org.uk/visit/devon/knightshayes)**

**<https://forestryenglandarts/ForestryEngland>**

**The Garden House, Buckland Monachorum, Devon. PL20 7LQ. Tel: 01822 854769**

**[www.thegardenhouse.org.uk](http://www.thegardenhouse.org.uk)**

## **Pyworthy Parish Council Meeting – 27 November 2025**

Councillors met for the last Parish Council Meeting of 2025 on 27 November. The November meeting is one of the busiest of the year as it is the meeting at which grants, budget and precept for the following municipal year is agreed (in this case 2026/7).

We were very pleased that David Campbell, from Holsworthy Hamlets Parish Council, came along to speak about their experiences with operating a Speedwatch. Volunteers need to be registered with Devon & Cornwall Police, who provide equipment and select the locations to operate Speedwatch. Councillors are particularly interested in running Speedwatch in Derril, particularly as Devon County Council have confirmed they will not install speed limit signs for Derril.

The most important parts of the meeting were the financial agreements that needed to be made. Firstly, Councillors agreed grants for 2026/7. Payment of grants will be made in May 2026.

Then, Councillors agreed the budget for 2026/7. The Clerk took Councillors through the draft budget previously circulated. Whilst the Parish Council accounts look healthy on paper, once ring-fenced reserves are taken into account, then free reserved are low and this could hamper the Council reacting to local issues going forward. Chief amongst ring-fenced funds is the Solar Fund. Councillors agreed that larger projects should be

funded from Solar Funds going forward, assuming they are eligible. Councillors agreed the draft budget with one small amendment.

Finally, Councillors agreed the precept for 2026/7. At the September meeting, Councillors agreed that the cost of grounds maintenance of the park should be added to the precept, as it was very difficult to find volunteers to carry out this work going forward. The cost, £2,700 per annum would be added to the precept going forward. So, Councillors agreed a precept of £10,700 for Pyworthy Parish for 2026/7.

A Happy New Year to you all.

**Simon Davies, Clerk to the Council**

### **PYWORTHY PARISH COUNCIL**

**Here are the contact telephone numbers for our Parish Councillors:**

**Ros Skinner:** Chair

01409 254159 or 07800667842

**Andrew Parrish:** Vice Chair

01409 254303

**Nick Lock:**

01288 381529 or 07989595372

**Rob Moores:** 01409 254192

**Angela Skinner:** 07794 344117

**Martin Brennan:** 01409 691096

**Andrew Beaven:** 01409 253509  
(after 7pm).

**For general enquires phone:**

**Simon Davies, Clerk on:**

**tel. 07989747416.**

**Email address:**

**[pyworthy@yahoo.co.uk](mailto:pyworthy@yahoo.co.uk)**

**The date of the next meeting will be  
Thursday 22<sup>nd</sup> January at 7.30pm.**



# Pyworthy MOT Ltd



Typical opening hours depending on school times and holidays.

Monday:	9.00am until 1.00pm
Tuesday:	9.00am until 4.30pm
Wednesday:	7.30am until 4.30pm
Thursday:	7.30am until 4.30pm
Friday:	7.30am until 4.30pm or 7.30am until 1.00pm.

For all your servicing and general repairs, MOTs and MOT work. M.O.T.s can be booked 30 days in advance of expiry, so booking early can catch and give time to repair, unknown faults and problems.

**Call Simon - Tel: 01409 254275**  
Courtesy car available.

**A Very Happy New  
Year to all our  
customers. Thank you  
for your continued  
support this year.**

## Update from our local hedgehog family .....

Dear Readers,

Henrietta & I, together with our somewhat younger Hogs, enjoyed a really nourishing Christmas Nosh of Slug Stew which, as you will fully appreciate, was enjoyed overnight!

We spent the day (and also Boxing Day) curled up - as you do, if you are one of us in our retreats. But a very Big Thank You for all the used postage stamps, which have/or will be deposited.

Also, many thanks from us both & the "Hog" family to those humans in Rydon Village (via Mary) for creating a collection box for used stamps. All the Hedgehog Family tend to roam far and wide each night, so we will do our best to keep the tidy gardens of your village area free of the slimies! But needless to say, this is an ongoing battle for us all into Spring. Thank you for your support.

A major support system! Do keep them coming through 2026 - and beyond! Have a Slug-free New Year!

See page 47 for more information.  
Harry & Henrietta.



### In the Spotlight



Marion pausing  
from editing The  
Pyworthy Post.

**Name:** Marion Ravn

**Age:** 70 (this month)

**Occupation:** retired but now the voluntary editor of the Pyworthy Post. Worked as an employment adviser in various Jobcentres, mainly in Exeter and South Devon, until having a family. Re-trained in word processing skills enabling a return to work. Over 20 years working in two schools including a SEND school designing and making bespoke learning resources for pupils aged 7-18yrs.

**Place Of Birth:** Born into a farming family in the village of Rettendon, Essex. Moved to Pyworthy in 2016.

**What is the best thing about Pyworthy and why?**

I like the sense of community here and the fact that the village is a peaceful and quiet place to live.

**What one thing would you change about Pyworthy and why?**

It would be nice to have a community shop and post office, perhaps with a coffee shop included where people could meet.

**Describe yourself in 3 words:**

Competitive, determined, organised.

**How do you like to spend your free time?**

Gardening (growing vegetables), jam, and pickle making, knitting, painting and editing the Pyworthy Post

**What one thing have you always wanted to do, try or learn?**

I've always fancied trying basketmaking.

**If you could meet anyone living or dead, who would it be?**

Ken Dodd, a man who truly enjoyed entertaining people, a great comedian.

Community  
Focus



Thanks go to Bryony  
Rylett for your research.

**Continued on page 17**





**Marion Ravn**

### **If you won a million pounds, what would you do with the money?**

I would give most of the money away to my family (Marion and husband Terry have four children) this would ensure they were all financially secure in the future, and that our eight grandchildren would have the best opportunities in life. Also, to make sure we all had private medical insurance.

### **If granted three wishes, what would they be (extra wishes excluded)?**

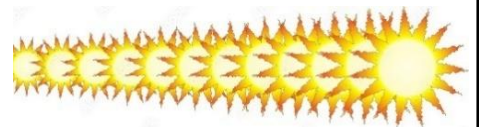
1. Good health for myself and family
2. To have a few more hours in the day
3. To have the winning Euromillions numbers to give me the opportunity to help others.

### **If you had to flee your home at very short notice what three items would you grab?**

1. My 'Granny' bag which is rather like a 'Mary Poppins' carpet bag, containing all sorts, and very handy when fleeing.
2. My passport.
3. My external hard drive with all my family photographs and important documents stored on it.

**Happy New Year – who will be the next Pyworthy Person?**

## **Sunrise, Sunset Times for the coming month:**



### **1<sup>st</sup> January 2026 (UK, Exeter)**

☀ Sunrise time: 08.15am GMT

🌅 Sunset time: 16.19pm GMT

🕒 Length of day: 8 hrs 03 mins.

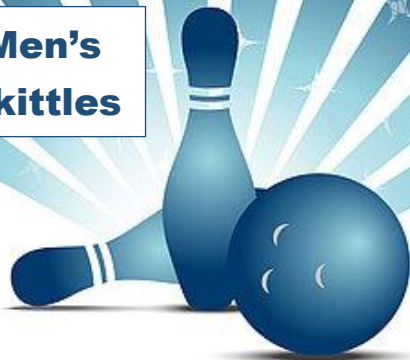
### **31<sup>st</sup> January 2026 (UK, Exeter)**

☀ Sunrise time: 07.51am GMT

🌅 Sunset time: 17.04pm GMT

🕒 Length of day: 9 hrs 12 mins

## Men's Skittles



## Men's Skittles!

**Pyworthy has a Men's Skittles Team, which meet on Tuesday evenings. If you would be interested in joining them, please contact:**

**Andrew on 07531186466 or 01409 253509.**

**Training will be given!**

## Burns Night – 25<sup>th</sup> January 2026

Burns Night, also known as Robert Burns Night or Rabbie Burns Day, is a celebration of the life and poetry of Robert Burns, Scotland's national poet. This annual event is observed on January 25<sup>th</sup>, the poet's birthday, and is marked by traditional Scottish customs, poetry recitations, music, and a special meal. Below: his cottage in Scotland, where he wrote many of his well-known poems.



Glebe House Cottages  
Est. 1985

## Glebe House Cottages, Bridgerule

**[www.glebehouscottages.co.uk](http://www.glebehouscottages.co.uk)**

**Telephone: 01288 381272**

## Accommodation

**6 luxury self-catering cottages all recently refurbished to a high standard.**

**Beautiful 5 acre site with a huge amount of facilities for all ages including:**

- ❖ Heated outdoor swimming pool
- ❖ Tennis court
- ❖ Stunning formal gardens
- ❖ Cellar bar & games room
- ❖ Children's play area,
- ❖ Woodland walk
- ❖ Hammock area
- ❖ Croquet
- ❖ Firepit
- ❖ BBQ's plus plenty more.

**10% discount for friends & families of local residents.**



## Party Venue

**Why not host your next party at Glebe House Cottage?**

**We have so many options to make your party stand out. Make it a party you won't forget!**

- ❖ We can host parties from 15 guests up to 200.
- ❖ Formal garden parties with a marquee
- ❖ Celebrations in our secret cellar bar
- ❖ Fun tailor-made children's parties!
- ❖ "Have a splash with a pool party!"
- ❖ "Birthday, Anniversaries, Christening or any celebrations!"





## GARDENING MATTERS from CRINACOTT

By Mike Godfrey, keen gardener



I hope that you had an enjoyable Christmas and New Year and that you had a chance to enjoy the days between the two dates for a rest from work and adopt a more laidback routine, as we did at Crinacott. This time of the year the garden is in not only in slumber, but it is generally very wet, in fact as last year at Crinacott the water table is at ground level, even though we are at the top of the ground which slopes away down to the streams. With the ground like this there is very little that can be done outside, even so, if conditions were better and you can summon up the enthusiasm and energy, it is probably the best time to get the basic jobs done. Like me, if it doesn't take your fancy and if you are minded to, it is a time when you can sit down and select and order your seeds for the coming year, with perhaps a glass of sherry or something stronger. While you've got the glass topped up you could start to make your garden plans, while you perhaps have a bit more thinking time on your hands and whilst you are perhaps enjoying some Christmas treats as well as a drink or two. For those of you with greenhouses or polytunnels or perhaps even a potting shed, it is a good time to clean and oil (light oil or WD40 or similar) your gardening tools and machinery, and even make a

start on cleaning the buildings themselves. It can also be a time when your pots and seed trays should be cleaned and sterilised, using diluted Jeyes Fluid (if you can still get it or something similar).

Here are a few hints and tips and jobs to do at this dormant time of the year:

- Plant bare rooted roses when the ground is a bit drier
- Definitely stay off lawns
- Protect vulnerable plants from frost by moving to greenhouses; the shelter of a south facing wall; covering with fleece or bubble wrap
- Mulch around your shrubs
- Start your tree and shrub pruning before the sap starts to rise
- Carry out greenhouse, tools and machinery maintenance as mentioned above
- Don't disturb compost heaps or log/twig piles to avoid disturbing grass snakes; slowworms; frogs; toads and of course hedgehogs
- If the weather ever dries up, remember to leave a dish of water out for the wildlife
- Put some feed out for birds as the temperature drops and their supply of natural foods begins to dwindle
- If you haven't got one, think about installing a water butt or two, so that you can save water when we have plenty for when we have less in the spring and summer.
- If you are thinking of planting fruit trees or other bare rooted plants, try and do it in the next two months or so but not when the ground is saturated like it is now.

***continued on page 20***

**GARDENING MATTERS from CRINACOTT**  
**continued from page 19.....**

I hope that everyone had an enjoyable Christmas period and as always, we wish you all the best of health, stay safe and well in the New Year.



Mile Godfrey has shared some of his lovely seasonal photos with us this month



That's what you call a Christmas tree! Thanks, Mike, for sharing your Crinacott Farm photos with us. Marion

**Road Closures:**

**Monday 12th January - Tuesday  
3rd March 2026**

[Roads Affected: Underlane,  
Holsworthy, Footpath](#)

For additional information  
contact: Uplands Retail LTD  
Telephone: 07867 330 362

**"JANUARY  
IS THE  
MONDAY  
OF MONTHS."**

**Please keep  
saving your  
used stamps  
for the B.H.P.S!**





## Evelyn's Walks Update

By Evelyn Sharman,  
Group Organiser



If you would like further information,  
you are welcome to contact me.

**Evelyn Sharman Tel: 01409 259 848 Email:**  
**[evelyn.sharman@btinternet.com](mailto:evelyn.sharman@btinternet.com)**

On Monday 8<sup>th</sup> December, we met in Bradworthy Square. Coincidentally, the weather was rather like last year in that on Sunday it was decidedly glum & probably kept a lot of people indoors. There were undoubtedly a lot of Christmas cards written & decorations put up. Thankfully, the wind & rain abated on the Monday & encouraged us to enjoy some fresh air & good company. We turned left out of The Square & followed the lane that took us past H.J. Wicketts & the school. At the bottom of the hill we noted that the River Waldon was flowing fast & I was impressed that one of the groups remembered its name. Last year nobody could remember, not even me! We continued up the hill through the avenue of trees & admired the views to the left. We turned right into the entrance for Berridon Farm following the footpath signs. Historically, the original route went right past the buildings but in recent years a diversion was put in place which is well-marked with a couple of lumps of granite acting as way-markers. They were probably originally gate posts. We went across a paddock which is sometimes grazed by donkeys & through a couple of self-closing galvanised gates. No stiles! We turned right & picked our way across a couple of fields which were a bit squelchy but not bad given the amount of rain we have had in December. According to Spotlight



News the other night, we have had a month's worth of rain in the first nine days of December! When we reached the lane, we turned right & then right again which brought us back to The Square. It's a nice circular route of approx. 2.3 miles & took us about 1.5 hours.

This was the last walk for the year & there isn't one planned for January. I would like to take the opportunity to thank everyone for their company over the last twelve months. I must also thank the landowners who very kindly give us permission to park on their land. This enables us to walk routes that would otherwise be awkward to access due to a lack of suitable parking. I am very grateful to the P3 volunteers who are usually associated with the Parish Councils as they check our local PROWs for accessibility & report back to DCC if there are any problems.

**Wishing everyone a happy time over the festive period & good health & happiness for the New Year.**



# Could you be a friend to St Swithun's?

Do you want to be more involved in the Church keeping it at the heart of our community without attending services?

In the last 10 years The National Churches Trust has reported 3500 churches have shut in the UK. The Church of England are shutting 20-25 Churches each year.

We have a number of restoration projects that are needed on our beloved building for which we will need the support and knowledge of the community.

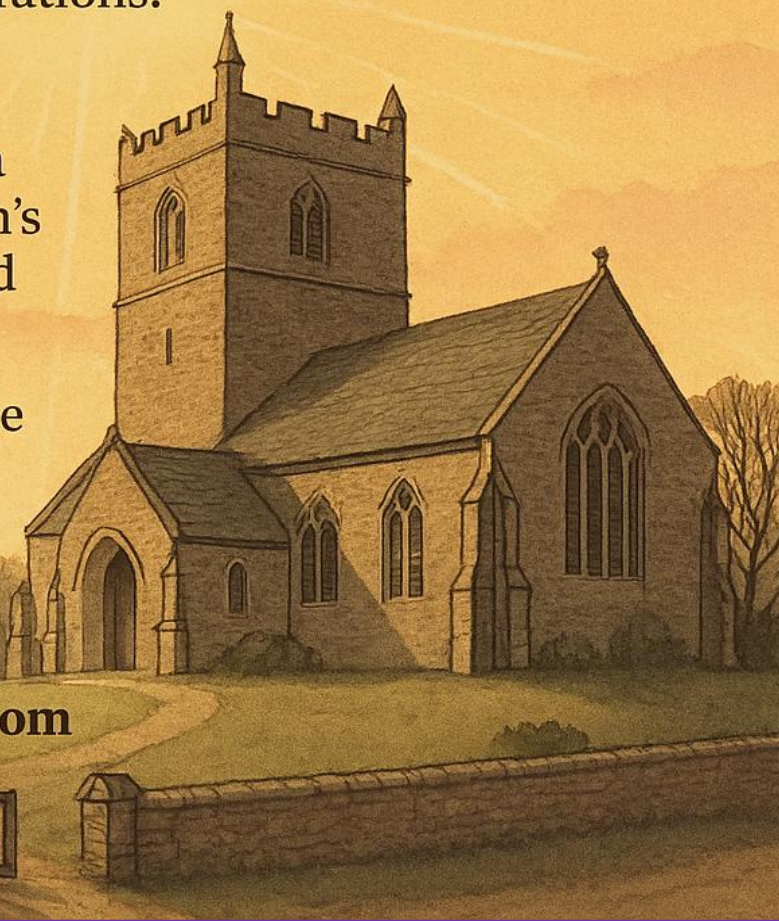
We want to keep it a treasured part of our heritage to pass to future generations.

**So can you help?**

Could you be part of a Friends of St. Swithun's group, supporting and actively fundraising?

If so please speak to the Church Wardens Liffy Lowes or Alison Davies or you can email Alison:

**[alicrane.27@icloud.com](mailto:alicrane.27@icloud.com)**







## M.A.G Double Glazing Repairs

- ❖ Replacement of misty or broken glass units
- ❖ Replacement of hinges, handles, locks & seals
- ❖ Letter boxes and cat flaps installed
- ❖ Installation of fascias, soffits & guttering

**Over 15 years' experience**



Call MARK for friendly advice and a  
NO obligation quotation.

**Tel: 07969 234161**



# EVELYN SHARMAN

**Professional Driving Tuition (DVSA ADI)**

**Telephone: 01409 259848**

**Mobile: 07885 352 082**

**Email: [evelyn.sharman@btinternet.com](mailto:evelyn.sharman@btinternet.com)**

## WHAT'S ON AT HOLSWORTHY LIBRARY – JANUARY 2026



Closed Thursday 1<sup>st</sup> January then back to usual opening hours.

- **Bounce & Rhyme**, Thursday 8<sup>th</sup>, 15<sup>th</sup>, 22<sup>nd</sup> & 29<sup>th</sup> – 2:15pm-2:45pm (term time only). Songs and stories for children 0-4 years old.
- **Lloyds Bank Community Banking**, every other Monday 2-4.  
By appointment only – call 02077143681 to book.
- **Mini Patchwork Workshop**, Thursday 15<sup>th</sup> – 10:30am. Free to attend but limited spaces – please book with library staff.
- **Re-Use & Repurpose: Creative Textile Workshop**, Saturday 31<sup>st</sup> – 2pm-4pm. Book via Ticketsource, or with library staff. £3 for library members, £5 for non-members.
- **Self Service Baby Weigh**. Every Thursday 1pm-4pm.
- **Lego and games** for children. Every Saturday – 10am-12pm

### Have your say!

**Devon County Council want to hear how you use libraries, what matters most to you, and what changes could help ensure libraries continue to support Devon's communities.**  
**Survey at: [devon.cc/devon-libraries](http://devon.cc/devon-libraries) or, visit your local library for a paper copy.**



# Library News!

**Holsworthy Library** - There are lots of exciting things happening at your local library. In addition to a great range of books you can use your library membership to access free eBooks and audiobooks via the Borrowbox app. We also have free public computers and Wi-Fi as well as printing, copying and scanning facilities. It is free to join the library, and we are a friendly, welcoming space open to all. Free hot drinks are available, and people are encouraged to use the library as a place to relax, work and socialise as well as to find their next great read!

### Opening Hours:

Monday 2pm-5pm

Tuesday Closed

Wednesday 10am-6pm

Thursday 10am-5pm

Friday Closed

Saturday 10am-1pm - Sundays Closed.





# SCAM ALERT

A message received from Dr. Reg Godwin, a resident of Hopworthy.

We think we are all pretty clued up about internet scamming, but I recently came across a phenomenon which I hadn't been aware of. It's a sort of "scamming lite", not a full-blown illegal attempt to part you from your money, but a form of deception, nonetheless.

## **It works like this:**

You might want to search for the address of an old friend with whom you have lost touch. You see a website offering electoral register searches for 50p a time. Chicken feed. You pay the one-off fee but find out a few days later that you have been signed up for

an auto - renewing subscription to the website's services for £39 per month. Clearly you would never have signed up to this in a million years, but they have cunningly got a couple of pages of terms and conditions which no one reads and in which is hidden the condition that by accepting the 50p offer, you are automatically signed up for the "subscription service". I was caught by this but fortunately the bank suspended my account before any money was taken. The website was obviously already on their radar. Even Microsoft has discovered this subscription lark. You can no longer get Word software for a single payment; you have to have a subscription and end up paying ten times the price. My advice is to avoid all subscriptions which auto-renew and those that don't warn you that your subscription period is coming to an end but take the money first, then send you an email thanking you for renewing after the event. It's a minefield out there, folks. Take great care.



## **Increased Solar Activity is Expected in January 2026!**

January 2026 falls right in the middle of the predicted Solar Maximum (peak of Solar Cycle 25), meaning high solar activity, frequent solar storms, and exceptionally bright, widespread Northern Lights (aurora), making it prime viewing time in high latitudes, though intense activity also means risks to satellites and power grids, with scientists expecting 10+ Coronal Mass Ejections (CMEs) daily compared to normal levels.



## Trigon Farm, Derriton, Holsworthy. EX22 6JU

We offer:

- ✿ Seasonal flowers for any occasion
- ✿ Veggie boxes
- ✿ Easy gardening courses
- ✿ Flower arranging workshops
- ✿ School visits
- ✿ Guided tours of the centre
- ✿ Private events

### Opening hours:

Tuesdays, 9.00am till 6.00pm.  
Other days by appointment.

[www.trigonfarm.co.uk](http://www.trigonfarm.co.uk)

Call Al on Tel: 07988484069

## Line Dancing!



**New dancers always  
welcome!**

For more information call Brenda  
on: 01409 253015

## Line Dancing Classes

Our Line dancing classes are held  
on: **Mondays** in

Pyworthy Village Hall.

**Complete Beginners:**

5.30pm – 6.30pm.

**Beginners/Improvers:**

6.30pm – 7.30pm &

**Intermediate level:**

7.30pm – 9.30pm.

**Tuesdays:** Intermediate level,  
7.30pm – 9.30pm.

**All classes cost just £5.**

**Come and join us!**





# Shapland Accountancy

We are a local long established family run firm with over 40 years experience. We provide Accountancy & Bookkeeping Services throughout Devon and Cornwall.

From small to large companies, Sole Traders, Partnerships, Limited Companies whatever you need, we can help.

Bookkeeping, Tax returns, Payroll, VAT or just advice, contact us to see what we can do for you.

Email Us: [admin@shaplandaccountancy.co.uk](mailto:admin@shaplandaccountancy.co.uk)



Find us on  
**Facebook**



## Bude Jazz Club

The Falcon Hotel, Bude.  
EX23 8SD

### Forthcoming Events in 2026

Sunday evenings 7.30pm – 10.00pm.

**Jake Leg Jug Band – 1<sup>st</sup> February**

**Two Counties Jazz Band –**

**15<sup>th</sup> February**

**Jeremy Huggett's Legacy Band –**

**1<sup>st</sup> March**

**Members £10, Visitors £14**

**Annual membership only £20**



**Bude Jazz**

[www.budejazzclub.co.uk](http://www.budejazzclub.co.uk)

email: [budejazzclub@gmail.com](mailto:budejazzclub@gmail.com)

## No Transport? Need a pickme-up?

### Ring & Ride

- Door-to-door service for all ages
- Wheelchair & scooter accessible

### Cars for Care

- Door-to-door service
- Times to suit your appointments
- 45/50p per mile

### Here for Hire

- Mini Bus Hire for Community Groups & Charities
- £100/day - £65/evening
- Self drive (experience of driving a larger vehicle)

Call

**01409 259001**

[office@holsworthytransport.co.uk](mailto:office@holsworthytransport.co.uk)

The Carroll Suite, Holsworthy Memorial Hall,  
Holsworthy EX22 6DJ



Holsworthy Amateur Theatrical Society  
presents

# ROBIN HOOD

Mon 2<sup>nd</sup> - Sat 14<sup>th</sup>  
February 2026

Book tickets from: HATS  
[www.ticketsource.co.uk/holsworthytheatre](http://www.ticketsource.co.uk/holsworthytheatre)  
HATS box office is open 9.00am -  
2.00pm Tel: 01409 253826.





## A BIG Thank You for Knitting Links for our Charity Chain



The photo was taken in our Church. Heather and Mary are pictured helping to make the knitted links to represent domestic violence victims.

Each link represents the two hundred and sixty-two victims of domestic violence killed in the country in the last year.



**Domestic Abuse Helpline- Phone:**  
**0808 2000247 for free & confidential advice.**

# THANK YOU!

A very BIG thank you to all who helped and supported the Christmas Fair on the 29<sup>th</sup> November.

I am pleased to say we raised **£1128.75** for our lovely Church. I must also thank all those who turned up on the Friday night to put up the Christmas decorations in the Village Hall, you did a super job. So, thanks again to you all for your support and we look forward to another successful Fair in 2026.

**Happy New Year from Janet  
Grant, Christmas Fair organiser.**





## **NEW SERIES**

# **Pothole Monthly!**

By Dr. Reg Godwin



### **What's happening in a pothole near you?**

Welcome to my exciting new feature: Pothole of the month! Each month throughout 2026 I will be bringing you all sorts of happenings around Pyworthy's now famous (infamous?) potholes - the ones you know and love like old friends, except old friends don't ruin your suspension, cut the side walls of your tyres and crack your sump (yes, it happened by the railway bridge).

We all know what a dry place Pyworthy is but when it's the rainy season (which extends from January to December) all sorts of wildlife are attracted to the potholes as they fill up with wholesome (?) water. The elephants have an uncanny ability to smell the water. Not many people are aware of the elephant herd in Pyworthy because they are extremely well camouflaged during the day. They climb into the upper reaches of cheery trees and paint their toenails red and Bingo! They are instantly invisible. Okay, I know it's an old joke but I'm not being paid for this stuff.

The middle tusker in this group committed several acts of bravery during the war and as a result was decorated by the old King George VI. Unfortunately, I think he got the instructions mixed up and somewhere there is an Uber driver going around wearing the BEM (British Elephant Medal).

Suggestions for high-class or longstanding potholes gratefully received by the author (please limit suggestions to about 200) and if anyone wants to prise their infant's Playmobil or Lego figures away from their tiny fingers for a day, I can make your figures celebs with a spread in The Pyworthy Post. Next month's theme is going to be pirates. Any pirate galleons out there needing a day's holiday? If so, contact Reg Godwin at [rlggodwin@gmail.com](mailto:rlggodwin@gmail.com)



# **The Pyworthy Church Christmas Tree Looked Splendid in the Holsworthy Tree Festival**

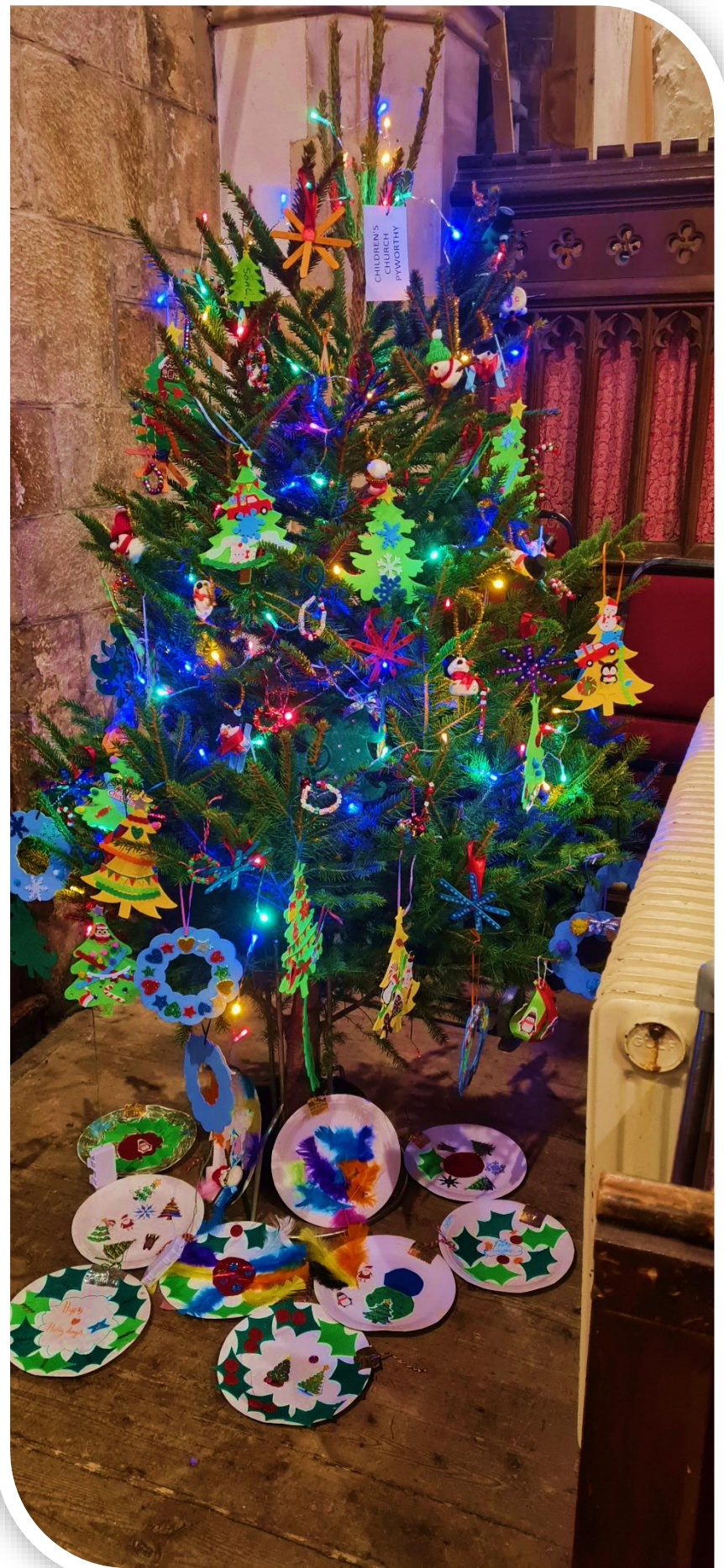
Amanda Witts organised a craft session for our local children, assisted by some enthusiastic adults.

They created a multitude of decorations ready to adorn our village tree, ready for the Annual Tree Festival. This was held in The Church of St. Peter & St. Paul in Holsworthy between the 10<sup>th</sup> and 14<sup>th</sup> December. The tree was returned to the village and decorated our local Church over the Christmas period, I hope you managed to see it.

I think you will agree that they made a brilliant job of making some very eye catching and colourful decorations.

Amanda will be repeating the event again this year, which I'm sure will once again attract lots of keen children.

Amanda would like to thank all those people who helped her achieve a very successful result.



**A Happy New Year everybody!**



**Sign up & help the Village Hall**

## Help us raise **FREE donations**

every time you **shop online**

### How to sign up

1. Visit [easyfundraising.org.uk](https://easyfundraising.org.uk)
2. Search for Pyworthy Village Hall and support our cause
3. Raise **FREE** donations for us when shopping



Scan me

**4,500** online sites will give us a free donation  
when you shop with them - at no extra cost to you!



£ Over £34 million raised

Trustpilot ★★★★★

1.9 million users

## Holsworthy History Society

The next meeting in 2026 is  
**Thursday March 12th** when the  
speaker will be Mr Mark Shepherd,  
a local retired vet talking about  
practises over the years.

**All most welcome.**

For more information about the  
History Society contact:

[holsworthyhistorysociety@gmail.com](mailto:holsworthyhistorysociety@gmail.com)

Margaret Stacey

**THINK** — DO YOU KNOW THE  
CALLER IS WHO THEY SAY THEY ARE?



## Devon Libraries Service Wants to Hear From YOU!

As you may have heard, Devon County Council have just launched a 12-week public consultation into the future of Devon's libraries.

Financial pressures, alongside the way people use Council services, are driving this consultation. Libraries Unlimited are commissioned to run the libraries by the council. We have been using our charitable reserves over the last few years to plug funding gaps, but we can no longer continue to do this. This consultation will help Devon County Council understand how people use library services and how they'd like to see things develop in future years. The consultation documents are online, and the survey can be completed by visiting:

<https://devon.cc/your-libraries>

The consultation is open until 22<sup>nd</sup> February 2026. Please help us spread the word so we can make sure everyone has their say.



**DOGS TO BE  
KEPT ON A LEAD**



**PLEASE  
NO FOULING**

Please ensure your black bags,  
recycling and garden waste bins  
are presented by

**6:00AM**

For more information and  
collection dates visit  
[www.torridge.gov.uk](http://www.torridge.gov.uk)

### What to Recycle (Green Bin/Box):

- **Plain Paper &**

**Cardboard:** Clean, dry  
cardboard and paper,  
including brown paper.

**Christmas Cards:**

Those without glitter, foil, or  
embellishments.

- **Plain Wrapping Paper:** Must  
pass the 'scrunch test' (doesn't  
spring back) and have no  
foil/glitter.

**Christmas crackers:**

Recyclable parts like paper  
hats and jokes (remove  
plastic bits).

### What to Bin (Black Bag/General Waste):

- **Traditional Wrapping  
Paper:** Foil, glittery, or heavily  
decorated paper.
- **Sticky Tape &  
Ribbons:** Remove these  
before recycling.
- **Items with Glitter/Foil:** Any  
embellishments on cards or  
crackers.

### Pyworthy Bin Collections



**JANUARY 2026 - Pyworthy Village,**  
other villages may have a different  
collection schedule.

### **Black bag** collection days are:

**Friday 9<sup>th</sup> January**

**Friday 23<sup>rd</sup> January**

### **Recycling**- Every Monday

#### **Boxes/Bags & Food Caddy**

Weekly collection of 2 x boxes & 2 x  
bags. Weekly collection of food  
waste in caddy.

### **Garden Waste** Collection dates:

**Monday 5<sup>th</sup> January**

**Monday 20<sup>th</sup> January**

**For more information go to:**

**[www.torridge.gov.uk](http://www.torridge.gov.uk)**

**Or phone:**

**01237 428700**

Read online at:

<http://www.bit.ly/postpy>

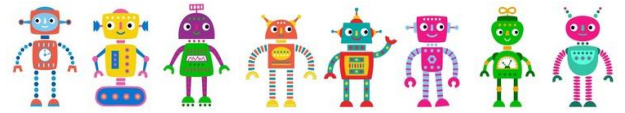
**and view the paper in full colour.**

**(don't use a search engine)**



# HUMANOID ROBOTICS ARE ON THE MARCH!

By Brian Meadows of Nofix-Nofee



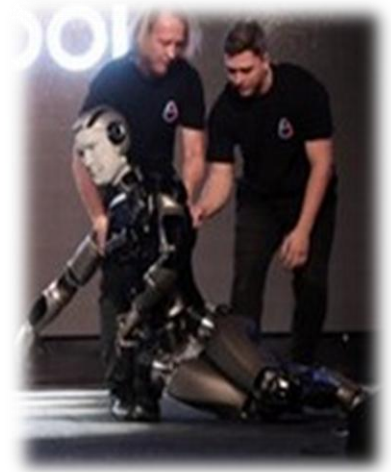
What is 2026 to bring to an already over laden world of smart phones, smart meters, smart cars, The development of computers, laptops, tablets and all-in-ones is now confined to history, So what maybe next? Well, how about anthropomorphic robotics!

Industry at large have used robotics on production lines for years and several million are currently in everyday use, but Elon Musk is developing what he believes will become a world beater in humanoid development.

Pleasingly, he is far behind a local Cornish company based in Falmouth who have produced a very credible and functional humanoid robot, designed by Engineered Arts and is considered by many to be the world's most advanced robot.



However, as robots can be programmed to do many things and with the advent of AI's ChatGPT can simulate any voice. Walking is the most difficult and has yet to be mastered, as the Russian attempt at anthropomorphic robot with artificial intelligence, and to their embarrassment, fell down after a couple of paces. So, robots are not quite ready to go on the march, but it's only a matter of time.



Seemingly prices currently discussed are between £10K and £15K but it is likely to be at least 5 years before a satisfactory walking robot is available to buy - so start saving!

However, Elon Musk believes in 20 years it will be possible to fully clone a human being and transpose that onto a robot. Now that is scary, image hundreds cloned Elon Musk robots, or Boris Johnson replacements or even worse, a whole government repeating error after error. In the words of the song "send in the clowns", or will it be robots!

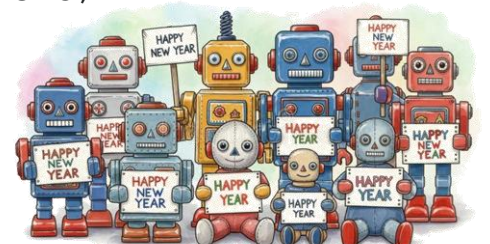
In a move to make robots to look more human, a Chinese company "AheadForm" is trying to make heads that appear to have skin, lips and hair using a synthetic skin with a natural feel and look.



Honda's Asimo made its debut in 2000, But it was ditched three years ago (that too fell over) as the company is focusing on human-like robotics.

So, if anyone is worried robots will take over the world, don't be, trip them up and they will fall over! We all have weaknesses.

**For computer help and advice, Tel: Brian Meadows  
01288 381061. Nofix-Nofee Computer Repair Service.  
(nofix-nofee.com)**





## Kates Complete Feet Foot Healthcare

Do you have a  
problem with:

- Corns
- Hard skin/Callus/Fissures
- Nail Cutting
- Thickened Nails
- Fungal infections/Athletes Foot
- Nail Pain
- Diabetic Feet Management
- Dressings and paddings to aid healing and comfort.

Kate Lord Dip: MFHP IIHHT  
Medical Foot Health Practitioner  
& International Institute of Health  
& Holistic Therapies.  
Fully insured, DBS checked,  
Governing Body CPS Certificates  
available if you require.



**Home visit sessions are only £30**

**Kate's Complete Feet  
Mobile Foot Practitioner  
Contact: 07557379099**

**Email: [katescompletefeet1@gmail.com](mailto:katescompletefeet1@gmail.com)**

# J. Mansell 07896 945889

## General Builder

**General Building, Property Maintenance & Repairs**

**Painting, Decorating, Plastering, Rendering,  
Brickwork, Patios, Concrete, Foundations  
Roofing, Carpentry & Joinery**

**Gutters, Plumbing, Drainage, Cob Conservation,  
Limewash & Lime Plastering**

**Kitchens, Bathrooms, Chimney Lining,  
Stoves & Garden Landscaping**

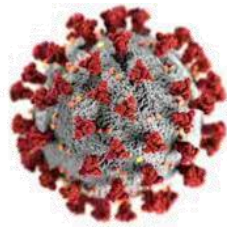
**[Jamescancott@gmail.com](mailto:Jamescancott@gmail.com)**



## Episode 4

# My COVID Diaries

By Mark Marriott



### A hospital incident control centre

**In episode 3 we learned about the fight for PPE; in this instalment NHS England tries to take charge and we start the first lockdown.**



### Command and control

When regional and national NHS bodies get nervous about a situation they like to step in and grip the organisation at the front line and insist that it follows their directions at all times, so much so that an early mentor of mine in the NHS used to say that they had gone into "grip mode" then coached me to ignore them! Inevitably during COVID there was a lot of gripping going on but the NHS like to refer to it as command and control and would liken their management of the situation to the command and control used in the military. The problem is the NHS seem to have learned military command and control from the First World War where a General miles away from the front line would direct troops and their commanders with no real understanding of what was

happening on the ground. This is very much how it felt trying to run a hospital where everything was unknown and we were getting directives from virtually every single national NHS department: the finance team would be given finance directives; nursing teams nursing directives; medical teams clinical directives; operating teams overall directives, even the NHS chapels were being given directives from the NHS chaplain service, which only came to light when the Weston chaplain informed me that the faith room was to become a "COVID safe space", whatever that meant. On the ground it was hugely confusing with conflicting directives that could be interpreted differently and being put into operation in different locations by different solutions. An example of this was the constantly changing guidance on PPE, for some time the ambulance service interpreted PPE guidance differently to the hospitals and ambulance crews would refuse to enter A&E because we were wearing different PPE to them, to make things worse they wouldn't let us in the back of an ambulance unless we dressed in their PPE to fetch a patient. No matter how much we argued between hospitals and the ambulance service at regional meetings the ambulance teams were adamant their PPE guidance from the national ambulance service was right and the hospital guidance from the national infection control service was wrong. As well as the relentless bulletins coming from region and national bodies, we also had to contend with the daily Boris briefings. I don't think

**continued on page 36**

## **My COVID Diaries continued from page 35.....**

the general public knows that when Boris made an announcement on the TV at 4PM not only was he making it to the public he was also telling hospitals how they were going to operate the following day. One Sunday evening when I happened to be at home, Boris announced that the next day hospitals would stream positive and negative COVID patients at the front door, he neglected to say that it was taking up to seven days to get a test result back from the lab so unless someone attended who had been tested a week ago we had no idea if they were positive or not, and they could be admitted, treated and discharged before their result came back. I'm quite sure that Boris didn't make this up on his own and that someone high up in the NHS was advising him that we could respond within 8 hours of an announcement and put a new system in place, I can only imagine that they thought they were a First World War general trying to get a knighthood and we were the troops on the ground and it didn't matter if we lived or died.

Another Boris out of the blue directive was when he declared that social distancing of two metres should be maintained and that all public spaces including hospitals will make provision for two metre social distancing. At Weston most of our wards had 32 beds made up of five 6 bed bays and two side rooms on each ward; an overflow trick for winter was to add an extra bed in each Bay and make the ward up to 37, we had discussed this for COVID beds but because it

made infection control even harder we would do it only if the hospital became overrun, the problem now was the two metre spacing meant that our 6 bed bays could now only contain 4 beds and so social distancing took our hard-won beds away and reduced the overall bed count to 280. There was now no way that we could contend with 450 expected COVID patients, whoever was whispering in Boris's ear clearly had no understanding of how hospitals were to manage, and to add to the confusion it wasn't clear if 2m meant patient to patient distance, or bed space to bed space meaning we would have to take into account bedspace furniture as well, which meant 3m patient to patient. You wouldn't believe how many regional meetings that debate took up!

On 23 March 2020 Boris Johnson told us to lockdown, and by 26 March it became law. Lockdown was a blessing for the hospital because not only did the number of attendances in A&E drop from 150 a day to about 30 a day as people stopped doing silly things outside but we were also allowed to stop our waiting lists and the 5000 outpatients a week became zero. Not knowing what was round the corner we re-rota'd the staff and sent many of them home waiting to come in to cover staff absent with COVID. Slowly but surely the number of patients in beds dropped to about 160 as more and more patients were discharged and less and less were admitted, it finally looked like we might just cope. One of the strangest effects of lockdown was the journey home when every two weeks I would travel from Weston **continued on page 37**



## **My COVID Diaries continued from page 36.....**

to Pyworthy and see nobody on the road through my front windscreen or the rearview mirror, on one journey I even had to avoid ducks who had made a nest on the M5 on the warm tarmac. We were so focused on running the hospital and so busy that we didn't experience or understand lockdown in the same way as others and poor Carol was living at home alone suffering from cabin fever while all I could do was live in the hospital and work relentlessly. It all changed on the 10th of May When after seven weeks of lockdown Boris began lifting restrictions, people could return to work but not use public transport, they could walk in family groups in the park but not mix with other families. It meant people could finally get out and with people outside A&E attendances went up. It was almost as if the public had been waiting to have accidents, and our usual 150 a day became 220 a day and A&E was very quickly over run. To add more pressure, we were asked to reopen our waiting lists and to produce a plan that would bring down the wait lists to pre-COVID levels within a few months, it meant our 5000 appointments a week needed to go up to 7000 to recover the waiting lists before winter began again. All of this had to be done in an environment with two metre social distancing and streaming between COVID and non-COVID patients. The team and I walked the whole site again and tried to work out how we would increase the outpatient appointments by 40% but decrease the waiting room space by 60%, we had to leave 2 chairs

spacing between each chair and one car spacing between each parking space, we even considered giving patients those electronic tags that you get in restaurants to tell you when your table is ready so they could sit in their car and wait to be buzzed. In the end we put up several tents at each entrance and turned them into temporary waiting spaces.

**Next month the hospital is forced to shut.**

## **Holsworthy Food Bank**

You can donate tinned food, packets or boxes of food. Unfortunately, fresh produce cannot be accepted.

**Donations can be left in the box at the back of St. Swithun's Church, Pyworthy, which is open every day. Thank you.**



The Food Bank would like to thank you for your donations this month, the total weight was **4.75kg.**

Keep the donations coming.

**Happy New Year!**

# Slimming World taste the *freedom*



Contact your local Slimming World Consultant  
and join a warm and friendly group today!

## NEW VENUE

### Bude

Bude Rugby Club  
Wednesdays  
5.30pm & 7.00pm

### Holsworthy

Holsworthy Memorial Hall  
Tuesdays  
5.30pm & 7.00pm  
Thursdays  
9.00am & 10.30am



touching hearts, changing lives

   [slimmingworld.co.uk](http://slimmingworld.co.uk)

## Pyworthy Post

### Deadline

The PRINT deadline  
for the next  
Pyworthy Post is:  
**TUESDAY 27<sup>TH</sup>**  
**JANUARY** at 9am.  
Please email your  
news as early as  
possible.  
Thank you.

View Pyworthy  
Post online in  
colour. Search:

<http://www.bit.ly/post/py>

## No Dog Fouling



**Bag it - Bin it**



**CRIMESTOPPERS**  
**0800 555 111**

Call anonymously with information about crime

**ActionFraud**

Report Fraud & Internet Crime

**0300 123 2040**

## Humour for January .....



**What is it  
called when  
a snowman  
has a  
temper  
tantrum?**

**A MELTDOWN**



## DECEMBER'S PYWORTHY POSER QUIZ

### ANSWERS:

1. Used to contain actual minced beef.
2. Holland/Dutch - leaving shoes packed with food for St. Nicholas' donkeys.
3. 12th Century French Nuns at houses of the poor (included fruit, nuts & tangerines).
4. A Christmas card depicting a family drinking wine (one sold for £8,469 in 2014).
5. It started as a joke 150 years ago when postmen wore red tunics (named after them).
6. Mistletoe: the plant is apparently spread through a bird's "droppings".
7. A Christmas Cracker (to encourage children & parents to buy more sweets - he was a sweetmaker!
8. In England/Wales @ 1 in 10; in Scotland or N. Ireland @ 1 in 6.
9. 28.7%
10. No. The letter X is a Greek abbreviation for Christ.
11. True! The needles are a good source of Vitamin C.
12. Bing Crosby's "White Christmas" (50 million copies + since 1942).
13. Amount of money spent on unwanted Christmas gifts (probably much more by now!).
14. Allegedly, a 221ft Douglas Fir displayed in 1950 in Seattle, Washington DC.
15. The amount of wasted Christmas food thrown away each year! How very sad!!!

**How did you do? Why not try this month's quiz on page 49.**

**Happy New Year from the Pyworthy Pilgrim.**

## National Pie Day – 23<sup>rd</sup> January



National Pie Day was created in **1975** by pie-lover **Charlie Papazian**, a teacher in Colorado. Papazian loved pies so much, that he decided to declare his birthday, January the 23<sup>rd</sup>, as the official day to celebrate his favourite dessert. He even had birthday pies instead of birthday cakes to blow his candles on!

There are many reasons to celebrate pies, and one of them is the fact that they are one of the oldest prepared foods in history. There are written recipes for pies dating back to as early as ancient Roman times. The Romans' preferred pie fillings were fruits, meat, and seafood, and the oldest pie recipe known to date is for goat cheese and honey pie.

Forget the diet for one day and tuck into your favourite pie.

Email address: [pyworthy@post.com](mailto:pyworthy@post.com) Telephone number: 01409 478294 Page 39

# Holsworthy Walk & Talk Group

By Gill Aston



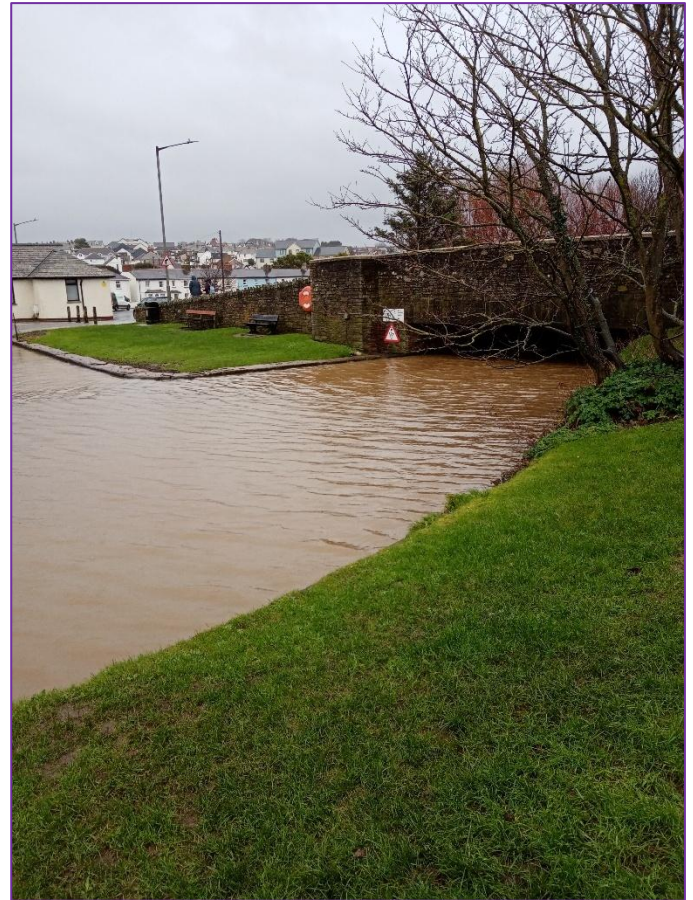
Why not scan  
our QR code?  
This will take you  
to our website.



Following on from our Group becoming an independent organisation a few years ago, one of our new Walk Leaders, Sue, has designed and printed new Walk Leader tabards complete with our logo, photos and our individual names so that we can be easily identified. Many thanks go to Sue for her creativity and generosity and she can be seen, along with a few other Walk Leaders, modelling the new tabards in the photo below.



A few weeks ago, we were remarking on the low water levels at Roadford Lake. Last month we were surprised at the very high-water levels in Bude Canal – and that was before the monsoons in mid-December. The waterfowl were certainly enjoying themselves as they were being well fed by some locals. Our photo shows the very little head room under the bridge from the Lock. The swans may need to duck to get underneath!!



Our Monday Walk in the Park Group enjoyed a Christmas 'party' in December courtesy of the Youth Centre and Devon Mind. We took a 'bring and share' lunch which turned into a veritable feast and had a very festive, sociable morning. Despite the monsoon conditions a few of us did walk around Stanhope Park a couple of times just to show willing. We would like to say a big Thank You to the Youth Centre and Devon Mind for their hospitality throughout the year which highlights the importance of a multifaceted approach to health and well-being.



**See our walks programme on page 41**



## Holsworthy Walk & Talk group report continued from page 40....

If you would like to join us on any of our walks to visit local places, meet new people and enjoy the benefits of walking our current programme of walks is available. Walks start at 10.30 and are **FREE**. Membership forms are available from our Volunteer Walk Leaders prior to the start of the walk.

### Our JANUARY Programme of walks:



Level 2 & 3 walks are every Friday at 10.30am. All these walks aim to be completed in about 90 minutes.

**JANUARY Walks:** Walk starting points as indicated below:

**Friday 2<sup>nd</sup> January – Level 2: Rydon Lane**, starting at Holsworthy Museum car park. Leaders: Michael & Paul. **EX22 6DJ.**

**Level 3: Cookworthy Woods**, starting at the main car park. Leaders: Jan & Eric. **EX21 5XJ.**

**Friday 9<sup>th</sup> January - Level 2: Upper Tamar Lake**, starting at Upper Tamar Lake car park. Leaders: Kim & Michael. **EX23 9SB.**

**Level 3: Milton Damerel**, starting at the Parish Hall car park. Leaders: Mike & Barbara. **EX22 7NZ.**

**Friday 16<sup>th</sup> January - Level 2: Holsworthy Woods**, starting at the main car park. Leaders: Cheryl & Richard. **EX22 6NQ.**

**Level 3: Highampton**, starting from Windmilland Cross. Leaders: Jacqui & Sue. **EX21 5JH.**

### Friday 23<sup>rd</sup> January - Level 2:

**Highampton.** starting from Windmilland Cross. Leaders: Mike & Eric. **EX21 5JH**  
**Level 3: Holsworthy Woods**, starting at the main car park. Leaders: Gill & John. **EX22 6NQ.**

### Friday 30<sup>th</sup> January - Level 2: Pyworthy,

starting at the Village Hall car park. Leaders: Barbara & Gill. **EX22 6JJ.**

**Level 3: Pyworthy**, starting at the Village Hall car park. Leaders: John & Kim. **EX22 6JJ.**

### Holsworthy Walk & Talk Group contact details:

Our website has lots of up-to-date information, together with our current programme of walks, details below:

[holsworthywalkandtalk@gmail.com](mailto:holsworthywalkandtalk@gmail.com)

<http://holsworthywalkandtalk.co.uk>

#### Phone numbers:

Gillian Aston 07854677784 or

Mike Jackson 01409 261196 or

Paul Davies 07731 626594.

### What is Blue Monday?

**Blue Monday 2026** is observed on the third Monday in January and is often described as the “saddest day of the year.” The label may be more symbolic than scientific, but the feelings it points to are common. After the holidays, many people experience a dip – financially, emotionally, and physically. Cold weather, shorter daylight hours, and pressure to stick to resolutions can all contribute. Lots of information and tips on how to overcome this online.

T: 01409 253 533  
www.renewsw.co.uk

Truly  
LOCAL

renew SW LTD

DOORS • GLAZING • SOLAR PANELS

MAKE US 1 OF YOUR 3 QUOTES



Accredited MCS  
supplier & installer  
of Solar PV Systems



TRUST  
MARK  
Government Endorsed Standards

certass 

Unit 9 Tamar Business Units  
Holsworthy Ind Est, EX22 6HL



# John Sanders Park Trust

We held two prize draws in our lottery this month, and the  
**WINNERS are:**

## Draw 9

1<sup>st</sup> Prize of £30 number 95 - Daniel Martin  
2<sup>nd</sup> Prize of £20 number 90 - Willow Martin  
3<sup>rd</sup> Prize of £10 number 46 - David Hillebrandt

## Draw 10

1<sup>st</sup> Prize of £30 number 97 - Paul Giles  
2<sup>nd</sup> Prize of £20 number 82 - Nigel Palmer  
3<sup>rd</sup> Prize of £10 number 51 - Helen Daniel

**2026 draw tickets will be on sale in the New Year**

### HOW TO BUY A £10 LOTTERY TICKET:

Please contact **Jane Oliver on 07500 834620**. If you are transferring monies for tickets via BACS, please ensure that Jane has your contact details.

### BACS Information:

If you wish to buy a draw ticket and wish to pay by BACS please do so, our Bank account details are below:  
Barclays Bank Trustees Sanders Trust Pyworthy Playing Fields  
Sort Code 20-04-59 Account number 10770388



**DENISE WELLINGTON**  
FUNERAL SERVICES

COMPASSIONATE, CARING,  
TRUSTED & PROFESSIONAL

Memorials | Pre-Paid Funeral Plans

24 Hour Contact 01288 359277



**Dementia  
Friends**  
An Alzheimer's Society initiative

**Golden Charter**  
Smart Planning for Later Life



denisewellingtonfunerals.co.uk  
enquiries@denisewellingtonfunerals.co.uk



## *Creative Craft Club*

The afternoon craft club takes place in Pyworthy Village Hall on the

2<sup>nd</sup> & 4<sup>th</sup> Thursday of each month, at 2.30pm until 4.30pm.

A donation of just £2 towards the hall is all it costs!

Come along and join us, just bring your own craft project to do, & see what others are doing. Plenty of help available, if you have a problem with your craft project.

**Phone Marie on:  
01409 254924**

# ARTHUR W. BRYANT FUNERAL SERVICE

CAMELFORD  
01840 214891

BUDE  
01288 352282

HOLSWORTHY  
01409 253000

LAUNCESTON  
01566 232426

**INDEPENDENT FAMILY  
FUNERAL SERVICE**

**MEMORIAL MASONRY**

**DIRECT CREMATION**

**PRE PAYMENT FUNERAL PLANS**

**OUR FAMILY CARING FOR YOUR  
FAMILY FOR OVER 50 YEARS**



AWBRYANT.CO.UK  
CARING@AWBRYANT.CO.UK



**Coming to the Village Hall on  
TUESDAY 20<sup>th</sup> JANUARY!**

## **REMINDER - Potters Fish 'n' Things**

**By popular request, Potters have agreed to set up shop in the Village Hall Car Park, 4.30pm-7.00pm every 3<sup>rd</sup> TUESDAY of each month, for the foreseeable future.**

**To pre order, head to their website:**

**[www.pottersfishnthings.co.uk](http://www.pottersfishnthings.co.uk)**

**OR alternately just turn up on the night.**



Other  
food  
available



## Useful Local Contacts Your Local Business & Services Directory

**Advertise in the Contacts  
list for just £15 per year!**

**Catering, Food & Drink Supplies** .....Harold Trading Ltd, 01288 381337  
**Chimney Sweep**..... Humphrey Pullar 01409 240138/07984406290  
**Coarse Fishing** .....Yeomadon Coarse Fishing 01409 253378  
**Computer Repairs** ..... Nofix – Nofee Repair Service, Brian 07534804101  
**Decorating & Property Maintenance** ..... Julian Lapham 07765626069  
**Driving Tuition** ..... Evelyn Sharman 01409 259848/07885352082  
**Double Glazing** ..... M.A.G. Double Glazing Repairs ..... 07969 234161  
**Electrical Contractors**..... Algo Electrical Contractors .....01409 254595  
**Electrical Contractor** ..... Mike Daniel 01288 381342/07977 596772  
**Estate Agents** ..... Kivells 01409 253888  
**Fruit, Veg, Flowers & more** ..... Trigon Farm, Derriton – Al, 07988484069  
**Funeral Directors** ..... Arthur W. Bryant Funeral Service 01409 253000  
**Funeral Services** .....Denise Wellington Funeral Services 01288 359277  
**Foot Care** ..... Kate Lord: 07557379099 Email: katescompletefeet1@gmail.com  
**Fencing/Garden structures**..... WWW.RUBY-GROUP.CO.UK  
**General Builder** ..... James Mansell - General Builder 07896945889  
**Gun Club** .....West Devon Air Gun Club, Nigel Palmer, 01409 254133  
**Grass cutting & garden maintenance** ..... Antony Jarvis, 07990016467  
**Heating Engineer** ..... Greg 01409 478198  
**British Hedgehog Preservation Society**.....Bob Gelder, 01409-253791  
**Herbalist** ..... Diana Lee, Registered Medical Herbalist 01409 254450  
**Holiday Accommodation** ... 01288 381272 email: jay@glebehousecottages.co.uk  
**Holsworthy NHS Dental Care** ..... 01409 255525  
**Holsworthy Golf Club**.....01409 253177  
**Holsworthy Library** ..... 01409 253514  
**Holsworthy Medical Centre** ..... 01409 253692 **District nurses** 01409 255134  
**Holsworthy Post office & Sorting Office** ..... 01409 253608/01409 253236  
**Holsworthy Rural Community Transport team** ... 01409 259001  
**Holsworthy Walk & Talk Group** ...Gill Aston 07854677784  
**John Sanders Park Trust** ..... Martin Brennan 01409 691096  
**Line Dancing Group** ..... Brenda Martin 01409 253015  
**MOT & Garage Services** ...Pyworthy MOT Ltd, Simon Martin 01409 254275  
**National Grid (report a problem line)** .... National Grid is on 0800 032 0311  
**Oil Fired boilers & tanks/service & installations** ..... Greg 01409 478198  
**Police** ..... Non-urgent phone calls 101/email [devon-cornwall.police.uk](mailto:devon-cornwall.police.uk)  
**Pyworthy Village Hall** ..... Bookings: Marie Heard 01409 254924  
**Organic Farm, Trigon Farm selling fruit & veg etc** ..... phone Al on 07988484069  
**Renewable Energy/replacement windows** ..... Renew SW Ltd, 01409 253533  
**Round Baling** ..... Stan Hopper 01409 253412  
**Stove Supplier** .....CBL Stoves, call Carl on 01288381852 [www.cblstoves.co.uk](http://www.cblstoves.co.uk)  
**Therapeutic Treatments** ..... CN Holistics 01288 381201  
**Torridge District Council** ..... [www.torridge.gov.uk](http://www.torridge.gov.uk) 01237 428700  
**Walling & landscaping services** ..... Call Dan on 07968996191 for a quote.

# Algo Electrical



## Domestic ~ Industrial ~ Commercial

*Electrical Installation; fault diagnosis; consultation & advice, including renewable energy, alarm and security camera systems.*

**Telephone 01409 25 45 95**

**[www.algo-sales.co.uk](http://www.algo-sales.co.uk)**

## Nofix-Nofee

Low Cost Computer Repair Services

### We come to you!

- \* Home or Office - No Call Out Fee
- \* Email & Broadband Repair
- \* Virus Infection Resolve
- \* System Restore
- \* New System Installation
- \* Refurbished Laptops & PC's
- \* Free Telephone Help & Advice
- \* Hourly Rate and Fixed Fee
- \* Onsite Fix & Repairs

Computer  
Repairs  
from only  
**£25**



**Tel: 01288 381061**

**Mobile: 07534 804101**

**Email: [mail@nofix-nofee.net](mailto:mail@nofix-nofee.net)**

## Tower Computer Systems for OAPs in Need!

I have a small quantity of refurbished tower computers with Windows 11 installed. I will gift these to OAP's experiencing financial difficulties free of charge (this offer does not include keyboard, mouse or monitors).

The conditions are primarily that they should be sponsored, and if delivering, installing and transferring data a small charge will be made to cover basic costs.

**Phone Brian Meadows:**

**Tel: 01288 381061.**



## Save Your Used Stamps for the Hedgehogs!



### *British Hedgehog Preservation Society*

**Macmillan no longer sells used stamps, but Bob has found another very worthwhile charity, who can make use of our stamps.**

**Please Save your used Postage Stamps!**

**Used National & International stamps can be recycled.**

**They will be used to generate income for the**

**British Hedgehog Preservation Society.**

**Simply pop stamps into an envelope**

**and drop off at:**

**9 Shortlands, Pyworthy or  
Sunnymead, Pyworthy.**

**Thank you!**



# DB WALLING



Cornish Stone  
Wall Specialists

- Dry stone wall repairs
- Retaining dry stone walls
- Stone work with mortared joints
- Earth stone hedging
- Landscaping
- General construction & ground works
- Garden features

## FREE QUOTES

Call Dan on

# 07968 996191



[www.dbwalling.co.uk](http://www.dbwalling.co.uk)

WALLING | LANDSCAPING | CONSTRUCTION

# Local Stove Supplier

# CBL STOVES

The Showroom, Unit 5  
Red Post, Bude, Cornwall  
EX23 9NW

01288 381852  
[carl@cblstoves.co.uk](mailto:carl@cblstoves.co.uk)  
[www.cblstoves.co.uk](http://www.cblstoves.co.uk)



- Stainless Steel twinwall flues
- Chimney Lining
- Iskoern Pumice lining
- Fireplace alterations
- Stove Installations
- Wood, Multifuel, Gas & Electric Traditional & Contemporary Stoves & Fires
- Chimney Rebuilds
- Slate, Granite & Glass Hearths
- Wood & Ceramic beams & surrounds
- Floating Shelves



**Showroom Opening Hours:**  
Monday to Friday 9am until 4pm  
Saturday 9am until 2pm

Call us now for a FREE no  
obligation quote on:  
**01288 381 852**

Website: [www.cblstoves.co.uk](http://www.cblstoves.co.uk)  
Email: [carl@cblstoves.co.uk](mailto:carl@cblstoves.co.uk)





## Pyworthy Poser Quiz for JANUARY 2026..

1. After which "god" was January 1st named? (see also Q.5).
2. How many tons of trash/rubbish are left in Times Square after New Year's Eve celebrations?
3. Many Brazilians welcome the New Year by doing what?
4. How long do most New Year Resolutions last?
5. "January" is actually rooted in the Latin word "ianua", which means what?
6. What is the definition of "Auld lang syne"?
7. Americans drink around how many glasses of Sparkling Wine on New Year?
8. With which ancient population did the New Year kissing tradition begin?
9. What colour underwear is considered unlucky to wear on New Year in Italy?
10. What's a spider's New Year resolution?

**The answers will be in the next Pyworthy Post**

**By The Pyworthy Pilgrim**



## Pyworthy Rural Art Group Pyworthy ART



A very Happy New Year to you, I hope that you all had a good time over Christmas.

The weather has been kind so far this winter, but we still have January and February ahead, which could be very wintry. Don't forget to get your cameras out and take some photos for reference, if we get snow.

**Art classes start back on the 6<sup>th</sup> January 2026.**

**We meet in the Village Hall on Tuesday afternoons 2.30pm until 4.30pm.**

**All abilities welcome.**

### **The programme for January:**

**Tuesday 6<sup>th</sup> January** – still life drawing and watercolour pencils

**Tuesday 13<sup>th</sup> January** – snow scene in watercolours

**Tuesday 20<sup>th</sup> January** – fruit and still life in watercolours

**Tuesday 27<sup>th</sup> January** – design and paint a birthday card

**For further information contact Janet Grant**

**Tel: 01409 259356**

**JANUARY  
2026**



## **Nature Notes**

**By Bryony Rylett**

January is statistically the windiest and coldest month of the year when it is often easier to answer the call of the great indoors than the call of the wild, however going out into nature in midwinter can be rewarded with memorable natural sights.

By now wind has stripped most leaves from trees and shrubs and cover in fields is reduced as grasses and crops lie dormant. This reduced foliage exposes foraging and feeding birds and animals normally hidden from view.

January can be a tough, lean month for wildlife with food supplies depleted. Hawthorn berries have largely already been stripped from flourishing hedgerows and gardens by hungry birds and squirrels.

January is the coldest month in the southwest with mean minimum temperatures between 1 and 2 °C.

The influence of Atlantic winds normally prevents very low temperatures in Devon however occasionally the mercury really dips.

In coastal regions the lowest temperatures are found when strong, cold easterly winds replace the

prevailing, temperate south westerlies.

Records show the coldest day of the 20th Century, in the south west, occurred on the 13th of January 1987 when -9.0 °C was recorded at St Mawgan (Cornwall) and -6.4 °C on the normally sub-tropical Isles of Scilly. Inland spells of frosty weather on clear and calm nights have produced records such as -15.0 °C at Exeter on 24 January 1958 and Bastreet (Cornwall) on 1 January 1979 with Yeovilton (Somerset) recording -16.1 °C on 14 January 1982.

Not all January days are cold though; some are surprisingly balmy. In 2024 the hamlet of Achfary in Sutherland, North Scotland, experienced a record, U.K. January temperature of 19.9°C, some 13.0°C above the 1991-2020 long term average for Britain.

While this temperature is an outlier, scientists, statistics and our own knowledge tell us weather patterns have changed and this is having an adverse effect on wildlife unable to adapt and evolve quickly enough to cope with that change.

The Met Office states most climate projections indicate winter windstorms will increase in number and intensity, confirming warnings, first voiced decades ago by climate scientists, that the U.K. 's weather would change and warmer, wetter winters and hotter, drier summers would become the norm.

Alongside heavy rain and low temperatures January is also, on average, the windiest month of the year having 44% of all significant windstorms.

***continued on page 51***





**Above:** A windswept tree, shaped by decades of prevailing southwesterly winds, near Parnacott.

Many may remember **Storm Darragh** sweeping over the UK on December 6th and 7th, 2024, when the Met Office issued a rare Red Weather Warning for wind and rain for large parts of western U.K. including Devon.

During Storm Darragh wind gusts of between 69 to 87mph were logged and a gust of 96mph was recorded at Berry Head near Brixham. In Pyworthy, as the stormy wind caused power outages, parishioners responded with community spirit.

Almost exactly a year later, on December 9th and 10th, 2025, **Storm Bram** blew in with wind speeds of up to 90mph (Hurricane Force 12 on the Beaufort Scale) and Amber rain warnings for large parts of Western Britain including Dartmoor.

The Environment Agency reported that at White Barrow, in the south east corner of Dartmoor, 106mm of rain fell in a 24hour period, between 10:00 on Monday the 8th and 10.00 on Tuesday the 9th; half the monthly average.

Our understanding of wind speeds is due to The Beaufort Scale devised in 1805 by Admiral Francis Beaufort while aboard HMS Woolwich and still used today. This provides a standard scale for observing and recording wind speeds.

On January 13th, 1805, Beaufort noted in his journal:

"Hereafter I shall estimate the force of the wind according to the following scale as nothing can convey a more uncertain idea of wind and weather than the old expressions of moderate and cloudy etc, etc."

Beaufort's scale built on and refined the ideas of generations of sailors and engineers. In 1807 the initial 13 categories dropped to the 12 still used today ranging from **Wind Force 0, Calm < 1mph to Wind Force 12, Hurricane, 73mph+**. The Royal Navy took 30 years to accept and use the scale.

The original scale measured wind force on a ship's sails; to be precise, that of a full rigged Man O' War. Today the scale is an empirical measure for describing mean wind speed intensity (not gusts) based on observed conditions at sea or on land.

Measurements of wind speed are recorded 10 metres above ground. Wind speeds at two metres are usually some 50-70% less.

Radio 4 listeners will be familiar with the twice daily: 00.48 and 05.20 broadcasts of the Shipping Forecast (on Long Wave and FM) giving wind speeds according to Beaufort's scale like the following example, for the shipping area Lundy, broadcast on 08/12/25: "Southerly Gale Force 8 expected soon, increasing Severe Gale Force 9 later." **continued on page 52**

**Nature Note – JANUARY continued  
from page 51.....**



**Above:** Storm clouds building over  
Holsworthy and eastward towards Dartmoor.  
September 2025

As well as wet and windy weather January contains the notorious day known as **'Gloomsbury'** (sometimes called Blue Monday, falling on the third Monday of the month) a label coined in 2005 by Cardiff University psychologist, Dr. Cliff Arnall, a seasonal disorder specialist.

Dr Arnall concluded the 24th was the worst day of winter when human misery hit a lowpoint fuelled by grim weather, debt, fading Christmas memories, broken resolutions, low self-esteem and a lack of motivation.

Arnall's 'Blues Day' formula was devised to help a travel company analyse when and why people booked holidays.

A pragmatic and stoical approach to

Email address: [pyworthy@post.com](mailto:pyworthy@post.com) Telephone number: 01409 478294 Page 52

vagaries of weather is contained in the anonymous, 19th century poem **'Whether the Weather:**

Whether the weather be fine  
Or whether the weather be not,  
Whether the weather be cold  
Or whether the weather be hot,  
We'll weather the weather  
Whatever the weather,  
Whether we like it or not.

Finally...although the mornings are still getting darker, despite the shortest day having passed on December 21st, the evenings are gradually becoming lighter due to the elliptical orbit of the earth around the sun and longer, warmer days are slowly returning.

The answer to December's Notes Question:

Don McLean's song 'Starry, Starry Night' was a tribute to **Vincent Van Gogh**.

This month's question; another musical one:

**The lyrics: "Walking 'round the room singing stormy weather," is the opening lyric from which 1992 song?**

The answer will be in February's Nature Notes.

**Happy  
New Year  
Pyworthy**







**Ant**  
**The Lawn Ranger**

For grass cutting & garden maintenance call:  
**Antony Jarvis**  
**Mobile: 07990016467**  
**Email:**  
**antony2191@googlemail.com**

## JANUARY ANNIVERSARIES:

**10<sup>th</sup> Anniversary 10<sup>th</sup> January 2016** - 10 years since the death of David Bowie, British pop/rock singer, songwriter and actor.

**60<sup>th</sup> Anniversary 12<sup>th</sup> January 1966** – The first episode of the television series *Batman* was broadcast on ABC in the USA. It ran for three seasons until 1968.

**75<sup>th</sup> Anniversary 9<sup>th</sup> January 1951** – The beginning of the jet age – the world's first passenger jet flight. A U.S. de Havilland Comet flew from Chicago, Illinois to New York City. The Comet officially entered service with BOAC (now British Airways) on 2<sup>nd</sup> May 1952.

**80<sup>th</sup> Anniversary, 8<sup>th</sup> January 1946** - American singer Elvis Presley received his first guitar for his 11<sup>th</sup> birthday. (Apparently, he would have preferred a bicycle or a rifle.)

**100<sup>th</sup> Anniversary, 26<sup>th</sup> January 1926** – Scottish engineer and inventor John Logie Baird gave the first demonstration of his television system to members of the Royal Institution and a reporter from The Times newspaper, at his laboratory in London.

**125<sup>th</sup> Anniversary, 22<sup>nd</sup> January 1901** – Death of Queen Victoria. Succeeded by her son, Edward VII.

**200<sup>th</sup> Anniversary, 30<sup>th</sup> January 1826** - The Menai Suspension Bridge was opened in the UK. It links the island of Anglesey to mainland Wales. It was the world's first major suspension bridge.

### The New Year, by Anonymous

May the year that is dawning  
So fresh and so pure,  
Be full of the pleasures  
That always endure.

The sunshine of love,  
The joy of kind deeds,  
The brightness of smiles  
That the sad world so needs.

The kindly word uttered,  
The angry unspoken:  
The merry heart's laughter,  
To heal the hearts broken.

And when the New Year  
Has grown old and grey,  
May you give it back spotless  
And pure as today.

Poetry corner



**Print deadline for the next edition of Pyworthy Post is: Tuesday 27<sup>th</sup> January at 9am prompt!**

**Diary dates this month:**

*(Dates & events were correct at the time of printing)*

Holsworthy Walk & Talk group enjoy a walk every Friday, see their programme on pages 40 & 41. Also, members take a short walk in Stanhope Park on Mondays.

**Thursday 1<sup>st</sup> January** – New Year Bank Holiday

**Monday 5<sup>th</sup> January** – Plough Monday

**Friday 9<sup>th</sup> January** – Village Hall Social evening with “Play Your Cards Right”

**Monday 12<sup>th</sup> January** – Blue Monday

**Saturday 24<sup>th</sup> January** - National Beer Appreciation Day

**Friday 23<sup>rd</sup> January** - Village Hall Social evening

**Friday 23<sup>rd</sup> – Sunday 25<sup>th</sup> January** – RSPB Big Garden Birdwatch weekend

**Sunday 25<sup>th</sup> January** – Burns Night

**Tuesday 27<sup>th</sup> January** – Holocaust Memorial Day

**Wednesday 28<sup>th</sup> January** – next Village Hall meeting at 7.30pm in the Hall - everybody welcome.

**Forthcoming Events in 2026:**

**13<sup>th</sup> and 14<sup>th</sup> June** – Pyworthy country Show, more details to follow



**How to make a  
New Year donation  
to the Pyworthy Post**

**BACS transfer details:**

Account number: 01086227

Sort code: 40-24-25

Account name: Pyworthy Post

Type of account: Community account.

Please email me your name and address for a receipt. **Cheques** should be made payable to **Pyworthy Post** and sent or dropped to: Mrs M Ravn, Sunnymead, Derriton Road, Pyworthy, EX22 6SX or drop cash to same address in an envelope, including your name and contact details.

**A big thank you to all those who have already donated to the cost of printing the paper, which is much appreciated. Marion your editor**



# RUBY

WWW.RUBY-GROUP.CO.UK

CLADDING | GATES | PLANTERS |  
FENCING | PERGOLAS & MORE

BUILD YOUR  
**BESPOKE**  
DREAM GARDEN



SCAN ME



CLADDING

01409 231 763

GATES

## WHY RUBY?

- ✓ MANUFACTURED IN HIGHAMPTON
- ✓ BESPOKE BUILD AVAILABLE
- ✓ FAST DELIVERY
- ✓ MADE TO MEASURE

FENCING

PLANTERS

PERGOLAS



Your Local  
Team

KIVELLS

www.kivells.com



Kivells have served Holsworthy, the surrounding area and its community since 1885 and we are passionate about property. We know our local areas intimately and our dedicated staff strive to offer the best customer service in the industry.



Happy New Year

## Holsworthy

Kivells Property Suite  
Market Square, New Market Road  
Holsworthy, Devon  
EX22 7FA  
01409 253888  
holsworthy@kivells.com



**Mark Kivell**  
Office Manager



**Daniel Stokes**  
MNAEA  
Director



**Jack Alford**  
Valuer



**William Branton**  
Sales Negotiator



**Enya Garrett**  
Property Secretary

