

ESX VX1400.4 PRO - performance monster in a compact format

Quad channel Power amp from ESX



Matching the full-range monos of the VX PRO series, ESX now comes with the "small" four-channel model for more moderate applications.

With the VX PRO amps, ESX has last year a series of monster amplifiers in the "Brazilian style" into the program. Exclusively mono power amplifiers, which almost all run full range up to 20 kHz, there are VX PRO amps from 2 to 13 kilowatts, with which larger areas can be covered with sound. VX PRO is designed entirely for SPL, it's all about uncompromising performance, for example for large systems with several large ones

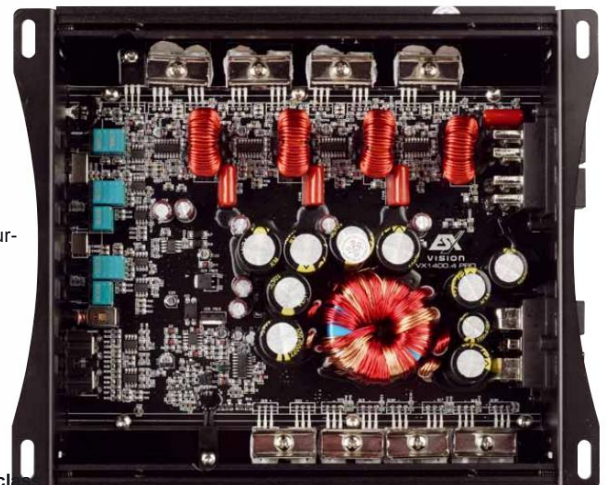
(PA) woofers and an Armada subwoofer. Now, with the VX1400.4 PRO, a small four-channel power amplifier is added – probably for the tweeters (here the wink smiley is missing from the print medium).

You can hardly tell from the clear VX1400.4 that it is one of the most powerful four-channel power amplifiers in its class.

The VX1400.4 PRO is solidly built with massive connection terminals, you will look in vain for a fuse, here the user has to be active with cable fuses.

Of course, the extremely stable extruded housing matches the look of the other VX PRO amps and is medium-sized at 230 x 215 millimeters. The filter equipment is fine for use as a drive for small loudspeakers: there is a high pass of up to 5 kHz for the front and a band pass of up to 5 kHz for the rear. Only low-level cinch sockets are available at inputs, factory radio-friendly high-level inputs are dispensed with, again with a view to the fact that hardly anyone will operate an extensive SPL system on the original radio. After unscrewing, a clean and tidy circuit board layout is presented. The VX1400.4 PRO is SMD-equipped, the four amplifier sections are neatly lined up on one side edge, the transistors of the power supply unit are on the opposite side. This has to be the case because the heat sink is particularly thick at these points and offers a support surface for the power components. In addition to the OP amps, there are five IC components, the first being the power supply controller, which is of course the TL494, in this case from Texas Instruments. The other four are the Class-D drivers IRS2092, so one for each channel.

Measurements and sound We are very excited now that the VX1400.4 PRO has been placed on the laboratory table. And indeed: the part can perform. With just under 190 watts at 4 ohms and a hefty 324 watts at 2 ohms per channel, the VX PRO is one of the most powerful four-channel amplifiers in its class! In addition, it makes little noise, although that doesn't play such a big role in the given performance. Distortion is there, but not too much - no problem.





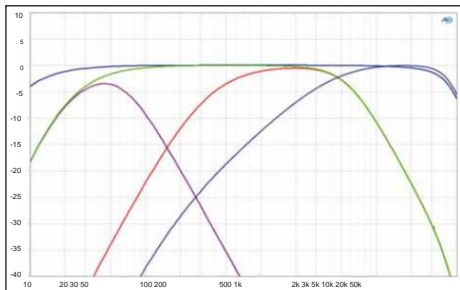
The ESX offers bandpass filters for two channels and can be supplied with only stereo signal

When the sound starts, a grin spreads in the test room, because the VX PRO goes forward and does it right! Open listening is fun because the power amplifier has the speakers firmly under control at all times. A 16 or 20 component system is no challenge for the 1400.4, it can easily drive much larger speakers. At a very low volume, it is not 100% convincing, the finest details are lost here, the VX PRO clearly prefers it loud. At a moderate volume, the sound fits again, which doesn't change at high levels either.

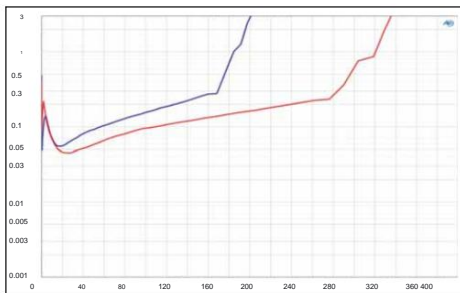
Drums are fun and rough sounds are welcome too. A performance in a class of its own for the fun faction.

Conclusion With the VX1400.4 PRO, ESX presents the perfect addition to the monster monos. While the monos take care of the big calibers, the VX1400.4 PRO provides support for compos, satellites or mid-highs that can keep up.

Elmar Michels



The VX1400.4 PRO runs up to 40 kHz and offers frequency crossovers up to 5 kHz, with the high-pass filter of the front channels changing the edge steepness somewhat sloppily



The VX1400.4 PRO offers performance to the max. With over 180 watts at 4 ohms and over 320 watts at 2 ohms, it is one of the performance monsters. On the other hand, the distortion of 0.05 - 0.3% is not record-breakingly low for a four-channel power amplifier

PERFORMANCE TIP

top class

CAR & HiFi 3/2023

ESX VX1400.4 PRO

Price	a 500 Euro
distribution	Audio Design, Kronau
Hotline	07253 9465-0
Internet	www.esxaudio.de

Evaluation

Klang	40 %	1,2	1,0
Bassfundament 8 %		1,0	1,0
neutrality	8 %	1,5	1,5
transparency	8 %	1,0	1,0
spatiality	8 %		
dynamics	8 %		
Labor	35 %	1,1	0,5
Performance	20 %	2,5	2,0
damping factor 5 %		1,5	2,0
signal-to-noise ratio 5 %			
Klirrfactor	5 %		
practice	25 %	1,8	2,0
equipment	15 %	1,5	1,5
proc. Electronics 5 %		1,5	1,5
Mechanics 5 %			

Technical specifications

channels	4
Power 4 ohms	188
Power 2 ohms	324
Power 1 ohm	
Bridge power 4 ohms Bridge	0
power 2 ohms Sensitivity	
max. mV Sensitivity min. V	648
THD+N (<22 kHz) 5W THD+N	0
(<22 kHz) Half load signal-	260
to-noise ratio dB(A)	6,9

Damping factor 20 Hz	
Damping factor 80 Hz	
Damping factor 400 Hz	
Damping factor 1 kHz	
Damping factor 8 kHz	
Damping factor 16 kHz	0,122 0,135 84 89 91 91 84 13 3

Features low-pass

high-pass	50 – 5k Hz (CH34) 50 – 5k Hz (CH12)/ 50 – 500Hz (CH34) 50 – 5k Hz (CH34)
Bandpass	
Bass boost	-
Subsonic filter	-
Phase shift	-
High-level inputs Auto switch-on (Autoscythe)	-
RCA outputs Start-stop capability	-
Dimensions	• (6.9V)
(L x W x H in mm)	215 x 230 x 60 2
Miscellaneous	or 4CH In

ESX VX1400.4 PRO

top class 1,3

CAR & HiFi 3/23

Price/performance: very

good "One of the most powerful amplifiers up to 500 euros."