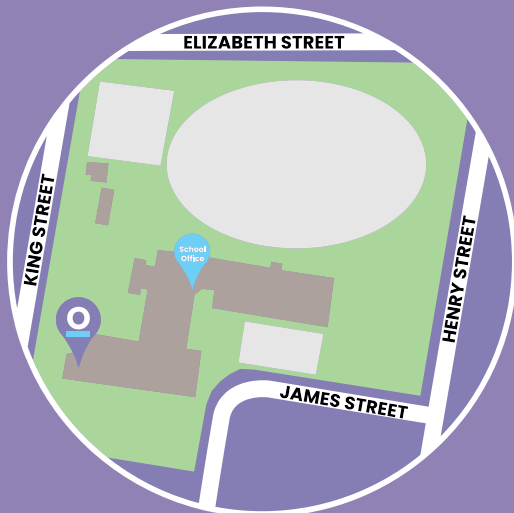
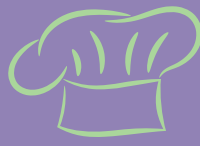


our patch

Moe (Elizabeth St) Primary School

The Our Patch After School Program is located at Moe (Elizabeth St) Primary School. The children are excited to be participating in Outdoor Sports, Cooking Arts & Crafts and Science Activities. Afternoon tea is included and we provide enough yummy, healthy, appealing food and drink to ensure the children are satisfied, and are keen to see what is on the menu for the next session.



Location:

Moe (Elizabeth St) Primary School
Cnr King and Elizabeth Street, Moe VIC 3825

Contact:

1300 018 310 or info@ourpatch.education

Hours of Operations

After School Care - 3:00pm to 6:00pm
Curriculum Days - 8:00am to 6:00pm

Program fees prior to Child Care Subsidy:

	Permanent	Casual
After School Care	\$28.00	\$31.00
Curriculum Day	\$75.00	

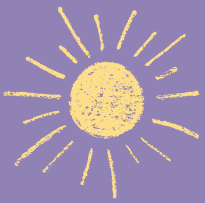
Bookings made within 48 hours incur an additional fee.

Cancellations within 24-48 hours incur a 25% charge of the session fee.



To register and book visit:

<https://ourpatch.education/before-and-after-school-care/>



Child Care Subsidy

Child Care Subsidy, also referred to as CCS, offers different levels of financial support to assist families with the costs associated with childcare, including Before School Care, After School Care and Holiday Care. This means you can get up to 85% of your session fees covered by CCS. CCS is paid directly to the child care provider to reduce the fees you have to pay.

How it is calculated

How much you receive depends on your individual circumstances and is calculated using the following information:

- 1 Your combined family income
- 2 Your level of activity
- 3 Your childcare providers hourly rate

You can use the Centrelink Payment and Service Finder to calculate your estimated entitlement.

To obtain the Child Care Subsidy

- 1 Have or register for a myGov Account. If you don't have a myGov account go to <https://my.gov.au/> and select Create a myGov account.
- 2 Once you are in your myGov Account, link your account to Centrelink and complete the registration process.
- 3 Complete your Child Care Subsidy Assessment
- 4 Confirm your enrolment with current provider

At the time of enrolling your child into Before, After or Holiday Care you will be required to provide a Customer Reference Number (CRN), issued once you have registered your MyGov account and linked it to Centrelink, along with the account holder and child/ren's date of birth.

Once you have booked your child into care you must then log back into your MyGov account to confirm your bookings with the provider.

All steps must be followed to ensure that you receive your CCS entitlements and not charged the full fees.

For more information on the Child Care Subsidy or to work out how much you can get go to: <https://www.education.gov.au/childcare-FAQ> or phone the Family Assistance Office on 13 61 50