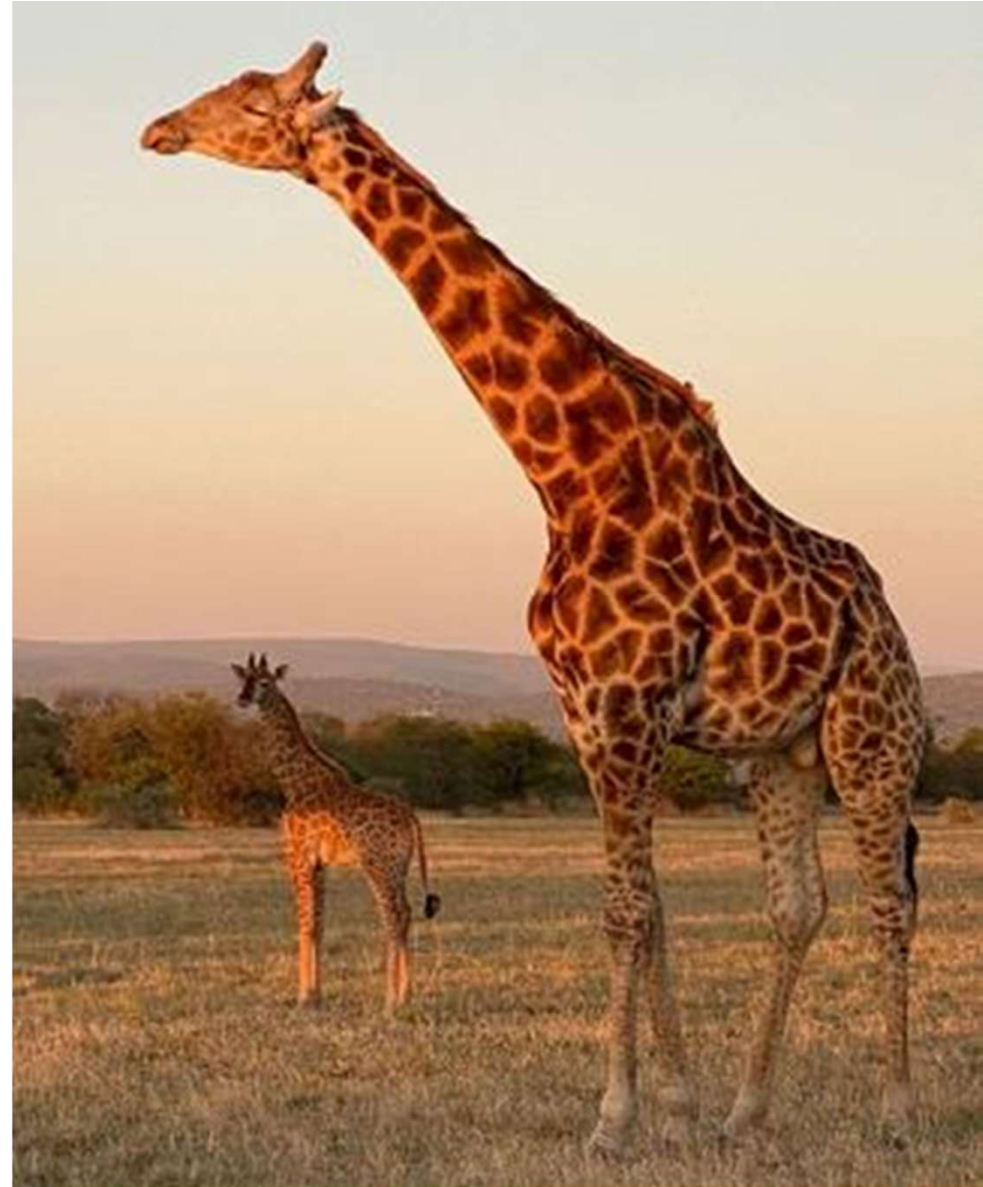
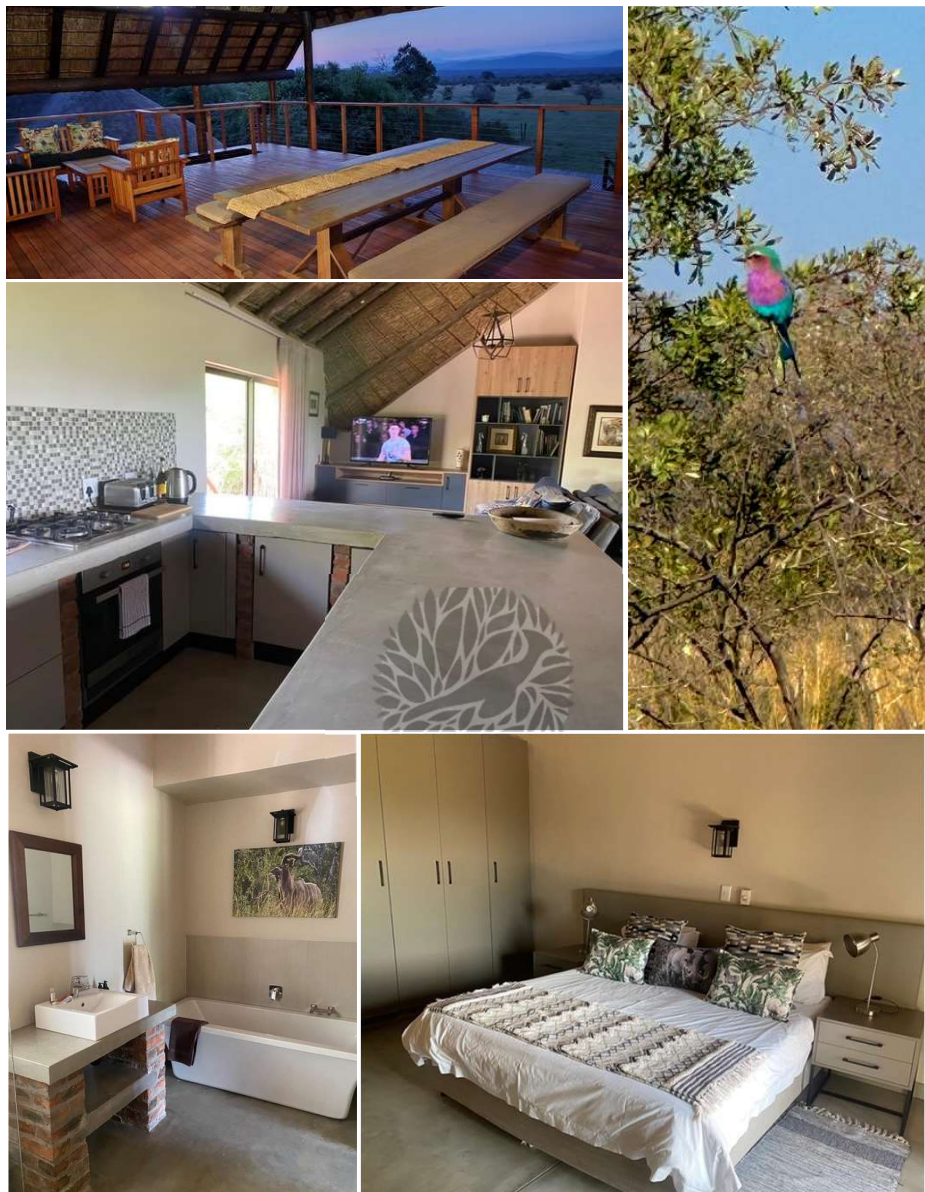




LOERIE LODGE





WELCOME TO LOERIE LODGE

Mabula Game Reserve is situated just over 2 hours from Johannesburg. You can watch the Big Five in 12 000 hectares of the malaria free reserve, whilst enjoying an array of wildlife and adventure activities. The diverse landscape and variety of animal, bird and plant life will want you coming back time and time again.

Loerie Lodge is a private, modern and spacious self-catering home with a swimming pool and 4 double bedrooms, each with large-en-suite bathrooms.

Open plan kitchen, fully equipped with dining room and TV room. This area leads out onto a large comfortable covered deck for reading, eating and game viewing.

For those who love to braai, the large open boma creates that special bush ambience but there is also a covered braai area in case it rains. A pool table to entertain both young and old and the convenience of a shared coffee station and drinks fridge for those wanting to lounge by the pool.

Modjadji Camp only a few km's away offers a variety of fun activities for children such as a jungle gym, putt-putt course, table tennis and a swimming pool. Delicious light meals like burgers and pizzas can be ordered for your convenience.

Other activities can be booked at Bush Time Reception: Horse trails, quad bikes, balloon rides, Hornbill tour or relaxing at the Mabula Spa.

Loerie Lodge boasts breathtaking views of the plains and Waterberg mountains.



GAME DRIVES

Loerie Lodge has its own Game Vehicle, and guests are permitted to take advantage of having private game drives at their convenience ONLY if a qualified game ranger at Mabula is driving the vehicle. Under no circumstances are guests allowed to drive the jeep.

It is far more cost-effective arranging game drives this way as opposed to going through Bush Time reception at the hotel.

The current price for normal 2,5hrs-3hrs Game drives is R750 per drive regardless of how many people are on the vehicle.

The Game Ranger can collect guests whichever time that suits. It is however best to go out when everyone else does as the Rangers share sightings. Sunrise and sunset are the best times for game viewing.

***Petrol contribution:** Due to an increase in fuel prices, all guests are kindly asked to contribute R250 from the third game drive onwards, which the housekeeper will collect.



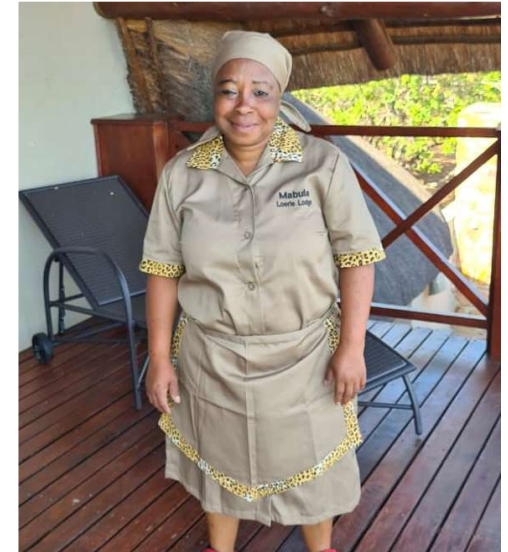
WARM WELCOME BY JEANNY

Our super efficient and helpful House Manager, Jeanny, has been with Mabula for 13 years. Please WhatsApp Jeanny (083 514 2301) a day or two ahead of time so she knows when to expect you. She will show you around upon arrival.

There are 2 fridges - one is usually used by guests for food and one for drinks. There is also a cooler box for drinks while on a game drive.

Remember to lock the house and close all windows when leaving the lodge for the day. Jeanny has her own key to come in for cleaning.

Daily cleaning, WiFi and DSTV all included for your convenience.



2026 RATES:

Weekend:	R12 000 (R750 pp/pn)
3 Night Special:	R16 530 (R689 pp/pn)
4 Night Rate:	R18 690 (R4 450 per night; R584 pp/pn)
Mid Week:	R4 620 per night (R577 pp/pn)
Week Rate:	R26 500 (R4 416 per night; R552 pp/pn) Off Peak Season
– 6 Nights and Half Day (Late Check Out if confirmed)	

Rates exclude Peak Season and Public holidays
R415 Conservation Fee per car (2026)

2025 rates Boma Buffet: R550 p/person & R275 for kids (Mon/Wed/Fri)
Fig Tree Dining: R 550 p/p & R275 kids Sun pm only



Please contact Lara on for more info:

WhatsApp : 078 334 6185 or

lara.baldassarri@gmail.com



*"There's something about Safari life that will
make you forget all your sorrows."*

- Isaac Dinesen

