

A Catalogue of Perfins
found on the Stamps
of Malta
1885-1945





Contents.

1. Introduction - A Brief History of Malta	Page 2
2. The Postage Stamps of Malta (1857-1945)	Pages 3-15
3. The Perfins of Malta	Page 16
3.1 “A.M./B.” Anglo Maltese Bank	Pages 17-22
3.2 “CG/M” Carmelo Griscti	Page 23
3.3 “E.T.A” Edward T Agius & C^o	Pages 24-26
3.4 “E.T.C ^o ..” Exchange telegraph Co	Page 27
3.5 “F.E/F” User unknown	Page 27
3.6 “GB/&C” Galea Brothers & C^o	Page 28
3.7 “JW” User unknown	Page 29
3.8 “R\C\J\P” Registry of Courts of Judicial Police	Page 30
3.9 “R\S\C” ‘Registry of (His Majesty's) Superior Courts’	Page 30
3.10 Miscellaneous ‘Perfins’	Page 31
4. Table of Dies & Stamps involved	Pages 32-43

Acknowledgements:

The study leans heavily on *‘The Perfins of Malta’* by Peter Christian Hansen (2016), with additional information from Peter Agius (*great-grandson of E T Agius*), Dan Baugher, Mike Behm, Jack Brandt, John DeBattista, Neil Grover, William Hall, Maurice Harp, Peter Maybury, Ron Mills, John Pullicino, Gary Shayler, Bob Szymanski, Jeff Turnbull, Antoine Vassallo (*President of the Gozo Philatelic Society*), Hadrian Wood, and Stefan Wrammerfors.

- Stanley Gibbons *‘Cyprus, Gibraltar & Malta’* Stamp Catalogue (4th Edition - 2014).
- The World Perfins Catalogue (European Section) - Robert J Schwerdt (1994).
- Mint stamp images courtesy of www.stamp-collecting-world.com

If you can add anything new to this ‘Study of the Perfins of Malta’, please let Roy Gault know. Address and e-Mail details are published on the Perfin Society website.

Figures correct to **1st February 2022.**

Introduction - A brief history of Malta.

Archaeologists have unearthed evidence that the islands we now know of as Malta and Gozo were first inhabited around 5900 BC by Stone Age hunters and farmers, at a time when the world population was only around six million. The first inhabitants were essentially farmers, but their agricultural methods were primitive and degraded the soil, so much so that the islands became uninhabitable. The islands were re-populated around 3850 BC by Stone Age peoples who built Megalithic Temples - claimed to be the oldest surviving free-standing buildings in the world. This Stone Age culture disappeared around 2350 BC, but was soon replaced by Bronze Age warriors. Malta's prehistory ends around 700 BC, after which the islands were successively colonised for over a thousand years.

- 700 BC Colonised by the Phoenicians - Iron Age.
- 480 BC Colonised by the Carthaginians.
- 218 BC Fell to the Roman Republic after the Punic Wars.
- 60 AD St Paul shipwrecked on Malta.
- 395 AD Byzantine domination.
- 870 AD Arab occupancy (Aghlabids) following a siege.
- 1091 Conquered by the Norman Kingdom of Sicily.
- 1194 Dominated by feudal rulers - first the Swabians, then the Angevins (1266), Aragonese (1283), Maltese nobility (1350), and eventually the Spanish.
- 1530 Islands given to the Order of St John - ruled as a vassal state of Sicily.
- 1565 The Ottoman Empire attempted to take the islands in the Great Siege of Malta, but the invasion was repelled. The Order of St John continued to rule Malta for over two centuries.
- 1798 Napoleon Bonaparte captured the Islands.
- 1800 French expelled with British, Neapolitan and Portuguese assistance.
- 1802 Peace of Amiens.
- 1814 Malta becomes a British Crown Colony, confirmed by the Treaty of Paris.
- 1919 Riots against British Rule.
- 1921 Constitution grants self-government.

The islands became an important naval base for the British, serving as the headquarters of the Mediterranean Fleet. As a result, Malta was attacked by the Axis powers during World War II, and in 1942 the island was awarded the George Cross by King George VI in a letter to the Governor. The George Cross appears today on Malta's flag and Coat of Arms.



The Crown Colony of Malta was self-governing from 1921-33, 1947-58, and 1962-64.

- 1964 Gained independence within the British Commonwealth - State of Malta.
- 1974 State of Malta becomes a Republic in 1974.
- 2004 Republic of Malta becomes a member state of the European Union.
- 2008 Republic of Malta joins the 'Eurozone'.

The Postage Stamps of Malta (1857-1945).



During the early 1800's, the inland posts were the responsibility of the local administration, but the overseas mails were part of the British G.P.O. system. Although postage stamps were introduced in Britain in May 1840, it wasn't until September 1857 that postage stamps were used in Malta, and even then only on overseas mail. The stamps used were current British issues, cancelled by a Duplex 'A25' cancel.



Over time, five basic 'A25' cancels (Gibbons Z3-Z7) were used, twelve if variations are included, the last one of which, with 'MALTA' in a curve, is the only contender likely to be found on Maltese Perfins, as illustrated on the 2d stamp with "CG/M".

The first Government run postal authority set up specifically to handle the *inland* mail of Malta was established on the **10th June 1853** - free of charge! However, during 1859 it was decided that there should be a charge of a halfpenny per half-ounce. This first Maltese stamp, which was printed by De La Rue, was introduced on **1st December 1860**.



SG1-19
½d Shades

For around twenty-five years the sole denomination, *a halfpenny*, was printed in a variety of shades of yellow (buff, brown-orange, bright orange, orange-brown, golden yellow, yellow-buff, orange-yellow, and red-orange), and to complicate matters further, different papers, watermarks and perforations were also involved. During that time, *thirty* distinct printings have now been recognised, which includes a printing in green, *N^o. 29*, issued on the 1st January 1885. Twenty more discreet printings in green followed.



SG20
½d Green

With the setting up of Malta's own Post Office, the British G.P.O. relinquished responsibility for overseas mails on 31st December 1884, effective from 1st January 1885. From this point onwards, Maltese stamps had to be used on both inland and overseas mail.

1885 Issue - introduced 1st Jan 1885.

Wmk Crown CA, P14. [SG20-30]

Note: The 5/- stamp (SG30) was issued 1st January 1886.



SG20 ½d



SG21 1d
Rose



SG22 1d
Carmine
from 1890



SG23 2d



SG24-26 2½d
Blue (shades)



SG27 4d



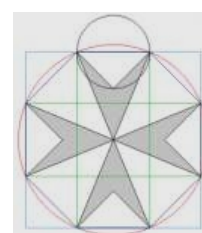
SG28 1/-
Violet



SG29 1/-
Pale Violet
from 1890



SG30 5/- Rose



Construction
of a
Maltese Cross

Revenue

The above stamps were only intended for use as postage, so the ½d, 1d, 4d, 1/- and 5/- stamps were overprinted 'REVENUE' by the Government Printing Office in Valletta specifically for fiscal use. **Postage stamps** became valid for fiscal use in Malta in **1912**.

1899 'Pictorial' Issue - introduced 4th Feb 1899.

Wmk Crown CA, P14. [SG31-33]

Wmk Crown CC, P14. [SG34-35]



SG31 ¼d Brown
4th Jan 1901



SG32 4d
Sepia



SG33 5d
Vermilion



SG34 - 2/6d
Olive-grey



SG35 10/-
Blue-black

1902 Overprint - introduced 4th July 1902.

[SG36-37]

In 1902 a quantity of Queen Victoria 2½d stamps were re-valued by overprinting 'One/Penny'. One of the impressions (R9/2) has 'Penny' wrongly spelt with the 'e' after the double 'n'! The printing was carried out by the Government Printing Office in Valletta.



1903 Definitive Issue - various issue dates.

Wmk Crown CA, P14. [SG38-44]



SG38 - ½d
12 Mar 1903



SG39 - 1d
7 May 1903



SG40 - 2d
12 Mar 1903



SG41 - 2½d
1903



SG42 - 3d
26 Mar 1903



SG43 - 4d
19 May 1904



SG44 - 1/-
6 Apr 1903

1904 Definitive Issue - various issue dates.

Wmk Multiple Crown CA, P14. [SG47-63]

All bar one of the definitives above and the three low-value 'pictorials' were re-issued from 1904 on paper watermarked **Multiple Crown CA**, with most bi-coloured stamps becoming monochrome. The 3d stamp was not included in the re-issue, which also involved a new definitive sized 5/- stamp.



SG47 - ½d
6 Nov 1904



SG48 - 1d
24 Apr 1905



SG49 - 1d
2 Apr 1907



SG50 - 2d
22 Feb 1905



SG51 - 2d
4 Oct 1911



SG52 - 2½d
8 Oct 1904



SG53 - 2½d
15 Jan 1911



SG54 - 4d
1 Apr 1906



SG55 - 4d
21 Nov 1911



SG61 - 1/-
14 Dec 1904



SG62 - 1/-
15 Mar 1911



SG63 - 5/-
22 Mar 1911



SG45 - ¼d
10 Oct 1905



SG57 - 4½d
27 Feb 1905



SG58 - 4½d
6 Mar 1912*



SG59 - 5d
20 Feb 1905



SG60 - 5d
... 1910

* Date of issue not known - this is the earliest known date.

1914 Definitive Issue - various issue dates. Wmk Multiple Crown CA, P14. [SG69-88]



SG69 - ¼d
2 Jan 1914



SG71 - ½d
20 Jan 1914



SG73 - 1d
15 Apr 1914



SG75 - 2d
12 Aug 1914



SG77 - 2½d
11 Mar 1914



SG78 - 3d
1 May 1920



SG79 - 4d
21 Aug 1915



SG80 - 6d
10 Mar 1914



SG81 - 1/-
2 Jan 1914

The 1/- stamp was also printed on a green backed paper (1915), olive back (1918), on an emerald surface (1920), and on an emerald back (1921).



SG86 - 2/-
15 Apr 1914



SG87 - 2/6d
... 1919



SG88 - 5/-
21 Mar 1917

1917 War Tax Issue - * Earliest known date.

[SG92-93]



SG92 - ½d
14 Dec 1917*



SG93 - 3d
15 Feb 1918*

1919 High Value Issue - issued 6 Mar 1919.

Wmk Multiple Crown CA, P14. [SG96]



SG96 - 10/-

1921 Definitive Issue - Wmk Multiple Script CA, P14.

[SG97-104]



SG97 - ¼d
12 Jan 1922



SG98 - ½d
19 Jan 1922



SG99 - 1d
24 Dec 1921



SG100 - 2d
16 Feb 1921



SG101 - 2½d
15 Jan 1922



SG103 - 2/-
19 Jan 1922



SG102 - 6d
19 Jan 1922



SG104 - 10/-
19 Jan 1922

1922 Self Government Issue - Watermark Multiple Crown CA.

[SG105-113]



SG105 - 10/-
Crown CC



SG106 - ½d
12 Jan 1922



SG107 - 2½d
12 Jan 1922



SG108 - 3d
12 Jan 1922



SG109 - 6d
12 Jan 1922



SG110 - 1/-
12 Jan 1922



SG111 - 2/-
12 Jan 1922



SG112 - 2/6d
12 Jan 1922



SG113 - 5/-
12 Jan 1922

1922 Self Government Issue (continued) - Wmk Multiple Script CA.

[SG114-121]

SG114 - ¼d
12 Jan 1922SG115 - ½d
29 Apr 1922SG116 - 1d
12 Jan 1922SG117 - 2d
12 Jan 1922SG118 - 2½d
15 Jan 1922SG119 - 6d
19 Apr 1922SG120 - 2/-
25 Jan 1922SG121 - 10/-
9 Mar 1922

1922 Overprint Issue - ¼d on 2d grey.

[SG122]

SG122 - ¼d
15 Apr 1922

The preceding issues were all replaced in 1922 by a series known as the '*Melita*' issue. The 'low-values' were designed by the artist *Edward Caruana Dingli* (1876-1950).

However, there was some criticism in the press regarding the issue, to which he replied:

After correcting the first proofs and suggesting certain artistic retouching, I regret to say, that the result still fell short of my expectations. My original was copied by hand and alterations were introduced resulting in a totally different effect from that originally intended.

The five 'high-values' were designed by the artist *Gianni Vella* (1885-1977), who was born in the city of Cospicua, east of Valletta.

1922 'Melita' Issue - Watermark Multiple Crown Script CA *Sideways*, P14. [SG123-140]

The first allegorical design by the artist **Edward Caruana Dingli** (1876-1950), shows **Melita** (the Personification of Malta), flanked by crowned shields of Great Britain and Malta. **Melita** is holding a large rudder, symbolising Malta 'steering its own course'.



SG123 - ¼d
22 Aug 1922



SG124 - ½d
1 Aug 1922



SG125 - 1d
28 Aug 1922



SG126 - 1d
25 Apr 1924



SG127 - 1½d
1 Oct 1923



SG128 - 2d
28 Aug 1922



SG141/2 o/p
Dec 1925



SG129 - 2½d
16 Feb 1926



SG130 - 3d
28 Aug 1922



SG131 - 3d
16 Feb 1926



SG132 - 4d
28 Aug 1922



SG139 - £1
28 Aug 1922



SG133 - 6d
1 Aug 1922

Note - The £1 stamp was issued with upright watermark 14th May 1925 - SG140.

The second allegorical design by the artist **Gianni Vella** (1885-1977), shows **Melita** leaning against **Britannia**, a possible allusion to them being sisters or maybe mother and daughter.



SG134 - 1/-
1 Aug 1922



SG135 - 2/-
1 Aug 1922



SG136 - 2/6d
28 Aug 1922



SG137 - 5/-
28 Aug 1922



SG138 - 10/-
28 Aug 1922

1926 'Melita' Overprint Issue - Multiple Crown Script CA *Sideways*, P14. [SG143-156]

In 1926, it was decided to produce separate Malta stamps, designated for revenue usage only. Up until then, the postage stamps were inscribed 'POSTAGE AND REVENUE', showing they were valid for both purposes. The current '*Melita*' definitive postage stamps were overprinted '**POSTAGE**', to indicate they were valid for *postal usage only*.



SG143 - ¼d
1 Apr 1926



SG144 - ½d
1 Apr 1926



SG145 - 1d
1 Apr 1926



SG146 - 1½d
1 Apr 1926



SG147 - 2d
1 Apr 1926



SG148 - 2½d
1 Apr 1926



SG149 - 3d
1 Apr 1926



SG150 - 4d
1 Apr 1926



SG151 - 6d
1 Apr 1926



SG152 - 1/-
1 Apr 1926



SG153 - 2/-
1 Apr 1926



SG154 - 2/6d
1 Apr 1926



SG155 - 5/-
1 Apr 1926



SG156 - 10/-
1 Apr 1926

* * * * *

A new series of revenues showing the head of King George V was issued between 1925 and 1930. The issue consisted of eleven values ranging from ½d to £5, with some values printed in more than one colour. These stamps were designed as 'key' types, having a tablet at the bottom. The general-duty revenues were un-appropriated (with the tablet left blank). Appropriated stamps were used for 'Applications', 'Contracts', 'Registers', and 'Stocks & Shares'. The lower values of the key types were withdrawn in 1928, but the pound values were used until the 1950s.



1926 'Postage' Inscribed Issue - Multiple Crown Script CA.

[SG157-172]



SG157 - 1/4d
6 Apr 1926



SG158 - 1/2d
5 Aug 1926



SG159 - 1d
1 Apr 1927



SG160 - 1 1/2d
7 Oct 1926



SG161 - 2d
1 Apr 1927



SG162 - 2 1/2d
1 Apr 1927



SG162a - 3d
1 Apr 1927



SG163 - 4d
6 Apr 1926



SG164 - 4 1/2d
6 Apr 1926



SG165 - 6d
5 May 1926



SG166 - 1/-
6 Apr 1926



SG167 - 1/6d
6 Apr 1926



SG168 - 2/-
6 Apr 1926



SG169 - 2/6d
6 Apr 1926



SG170 - 3/-
6 Apr 1926



SG171 - 5/-
5 May 1926



SG172 - 10/-
9 Feb 1927

1928 'Air Mail' Overprint Issue - Issues 1st April 1928.

[SG173]

**AIR
MAIL**



SG173 - 6d
1 Apr 1928

1928 'Postage and Revenue' o/p Issue.

[SG174-192]



SG174 - ¼d
1 Oct 1928



SG175 - ½d
1 Oct 1928

POSTAGE
AND
REVENUE



SG176 - 1d
1 Oct 1928



SG177 - 1d
5 Dec 1928



SG178 - 1½d
1 Oct 1928



SG179 - 1½d
5 Dec 1928



SG180 - 2d
1 Oct 1928



SG181 - 2½d
1 Oct 1928



SG182 - 3d
1 Oct 1928



SG183 - 4d
1 Oct 1928



SG184 - 4½d
1 Oct 1928



SG185 - 6d
1 Oct 1928



SG186 - 1/-
1 Oct 1928



SG187 - 1/6d
1 Oct 1928

POSTAGE
AND
REVENUE.



SG188 - 2/-
1 Oct 1928



SG189 - 2/6d
1 Oct 1928



SG190 - 3/-
1 Oct 1928



SG191 - 5/-
1 Oct 1928



SG192 - 10/-
1 Oct 1928

1930 'Postage & Revenue' Inscribed Issue - issued 20th October 1930. [SG193-209]



SG193 - ¼d



SG194 - ½d



SG195 - 1d



SG196 - 1½d



SG197 - 2d



SG198 - 2½d



SG199 - 3d



SG200 - 4d



SG201 - 4½d



SG202 - 6d



SG203 - 1/-



SG204 - 1/6d



SG205 - 2/-



SG206 - 2/6d



SG207 - 3/-



SG208 - 5/-



SG209 - 10/-

1935 KGV Silver Jubilee Issue - issued 6th May 1935.

[SG210-213]



SG210 - ½d



SG211 - 2½d



SG212 - 6d



SG213 - 1/-

1937 KGVI Coronation Issue - issued 12th May 1937.

[SG214-216]



SG214 - 1/2d



SG215 - 1 1/2d



SG216 - 2 1/2d

1938 KGVI Pictorial Definitive Issue - issued 17th February 1938.

[SG217-231]



SG218 - 1/2d



SG219 - 1d



SG217 - 1/4d



SG220 - 1 1/2d



SG221 - 2d



SG222 - 2 1/2d



SG223 - 3d



SG224 - 4 1/2d



SG225 - 6d



SG226 - 2/-



SG227 - 1/6d



SG228 - 2/-



SG229 - 2/6d



SG230 - 5/-



SG231 - 10/-

On the 8th March 1943, six of the low values were issued in a different colour, as follows:



SG218a - 1/2d



SG219a - 1d



SG220b - 1 1/2d



SG221b - 2d



SG222a - 2 1/2d



SG223a - 3d

Of these, the 2d (Red) is known to have been Perfined.

* * * * *

Two stamps were issued on the 3rd December 1946, to celebrate the '*Return to Peace*' after the end of WWII. Neither have been reported with a Perfin.



SG232 - 1d



SG233 - 3d

Between 1933 and 1946, the constitution of Malta was suspended, reverting to Crown Colony status, but in 1947 a new constitution was put in place allowing Malta to govern itself again. To mark this important phase in Malta's history, the then current definitive stamps were overprinted, much as they were in 1922, but with 1947 added. The stamps were issued on the 25th *November 1948*, with later colour changes into the early 1950's.



SG238 - 2d

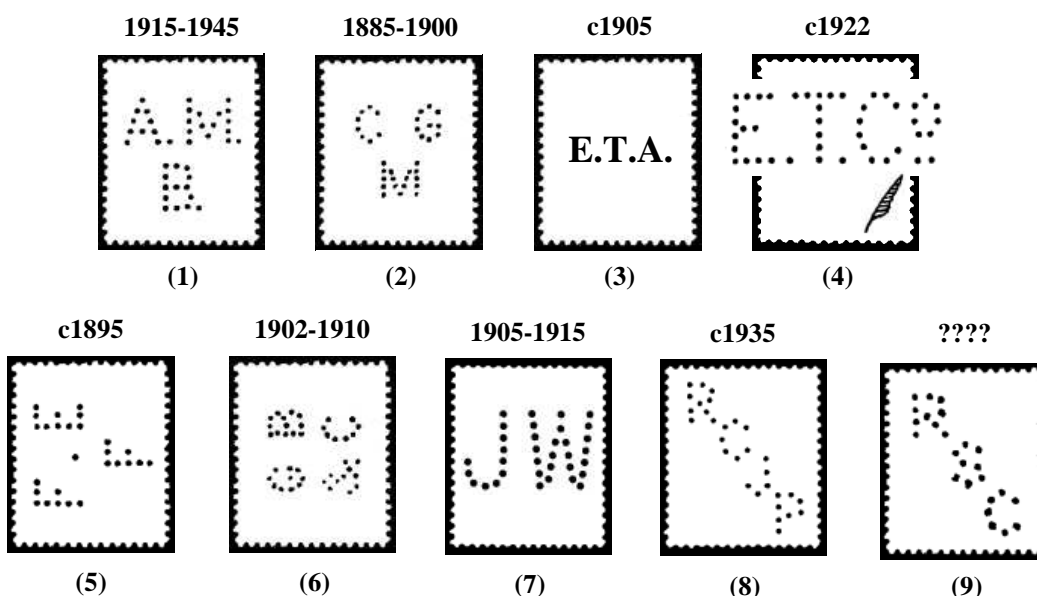
None of these overprinted stamps are known with a Perfin - one shown here for reference.

The Perfins of Malta.

Although permission to perforate postage stamps with firms initials (to deter theft) was granted to Joseph Sloper by the Postmaster General in a letter dated 13th March 1868, (now in the possession of the Perfin Society), it was not until some twenty years later (in the late 1880's) that the idea was adopted in Malta.

To date only *eight* Perfin dies have been recorded as having been used in Malta, although an "E.T.A." is known but only from circumstantial evidence of having been 'seen on an Edwardian postage stamp'. Silhouettes for them are shown below, followed by the known stamp details. *Ninety-two* DDF's have been recorded on postage stamps. Also included is a study involving the G.B. Perfins thought to have been used by 'E T Agius', which may or may not relate to the lone sighting of "E.T.A." on a Maltese stamp.

The earliest known date of any Perfin used in Malta is the *18th July 1886* (on "CG/M"), and the latest known date is the *15th May 1942* (on "A.M./B.", shown below), although this latter die is also known on the 2d Red KGVI Pictorial definitive (issued in 1943), so perhaps dating to c1945. All of this gives a Perfin usage in Malta of *over 55 years*.



Indicates that the image has been built up electronically from partial strikes.

- "E.T.A." Known only from a letter from a relative of the possible user, published in the Malta Study Group's Newsletter (January 1961).
- "R|S|C" Published in The World Perfins Catalogue - European Section - by the late Robert J Schwerdt (The Perfins Club - 1994). Stamp details unknown.

Summary Table ... 9 Dies (if you count “E.T.A.”), and **92 DDF**.

Index No	Letters	Die in use date Range	Earliest Date	Latest Date	DDF
1	A.M./B.	1915-1945	21 July 1921	15 May 1942	68
2	CG/M	1885-1900	18 July 1886	12 Jan 1898	3
3	<i>E.T.A.</i>	<i>c1905</i>	---	---	0
4	E.T.C ^o ..	c1922	---	---	5
5	F.E/F	c1895	---	---	1
6	GB/&C	1902-1910	18 Aug 1906	---	7
7	JW	1905-1915	---	13 Nov 1915	6
8	R/C/J/P	c1935	---	---	2
9	R/S/C	????	---	---	0
				TOTAL >>>	92

There follows a record of the stamps (with SG numbers) known used on each of the dies. A picture gallery will be built up over time as more collectors contribute information, the majority of which are from the collections of:

*Peter Christian Hansen, William Hall, Hadrian Wood, Jeff Turnbull,
Dan Baugher, Gary Shayler, Peter Maybury, Bob Szymanski,*
along with images from e-Bay and Auction websites.

1. “A.M./B.” positively known used by *The Anglo Maltese Bank*.

1915-1939



The Anglo Maltese Bank was founded in 1809 by a group of prominent Maltese and British merchant businessmen, with William Higgins as its first president. A rival, The Banco di Malta was established soon after, in 1812, but both were destined to merge in 1946 to form the National Bank of Malta.

1904 Definitive Issue - Wmk multiple Crown CA.

This 5d (SG60) was issued in a pale sage-green in 1910, and in 1914 in a deep sage-green. I’m guessing it’s the later shade.



These ½d and 1d KGV definitives are SG98, and SG99 (known dated 27th July 1921, and known on a Coupon Receipt dated 24 FEB 1922). The 2d with the shaped 'MALTA' tablet is SG100, introduced in 1921. A 2½d KGV (SG77) is known dated 15th Oct 1921, and a 3d (SG78). Also, 6d and 1/- also known on a receipt dated 21 JUL 1921 making them SG80/81.



The first two high values below were first introduced in 1899, but these will be from later printings - the 2/6d (SG87 from 1919) is dated 1922, and 10/- (SG35). The KGV 2/- is SG103 from 1922 (although the earlier SG86 is also known), and the KGV 5/- is (SG88 from 1917), one such dated FE 2/22. Depending on the watermark, the 10/- 'MALTA' will be SG96 (from 1919) or SG104 (from 1922).



1922 'Self Government' issues are represented by the 1d (SG116), 6d (SG109), SG2/- (SG111), 2/6d (SG112), and 5/- (SG113).



1922 'Melita' Issue - ½d (SG124), 1d (SG125 & SG126), 1½d (SG127), 2d (SG128)



3d (SG130 & SG131), 4d (SG132), 6d (SG133)



2/- SG135, and 10/- (SG138) dated FEB 1926.



The 'Two pence halfpenny' overprint on the 3d (SG141/2) was introduced in Dec 1925.



These three examples from the 1926 'Postage' overprint series are the ½d (SG144), 1d (145), 1½d (146), 2d (SG147), and 2½d (SG148).



1926 'Postage' Inscribed Issue - ½d (SG158), 1d (SG159), 1½d (SG160), 2d (SG161)



1928 'Postage and Revenue' o/p Issue - 1d (SG176/7), 2d (SG180), 6d (SG185), 1/- (SG186), 1/6d (SG187), 2/- (SG188), 2/6d (SG189), 3/- (SG190), 5/- (SG191), 10/- (SG192).



1930 'Postage & Revenue' Inscribed Issue.

½d (SG194), 1d (SG195), 2d (SG197), 3d (SG199), 6d (SG202)



1/- (SG203), 1/6d (SG204), 2/- (SG205), 2/6d (SG206), 3/- (SG207), 10/- (SG209).



1935 KGV Silver Jubilee Issue - issued 6th May 1935.

Two of the four values are known with a Perfin - 6d (SG212), and 1/- (SG213).

**KGV Fiscals - Stocks & Shares.**

The series was introduced in 1925, but the lower values were withdrawn shortly afterwards in 1928, although the £1 (Bft 42) continued in use until the early 1950's.



The 2/- Stocks & Shares stamp (Bft 39) is dated 22nd Apr 1926.

KGV Revenue Stamps.

1d (green) Revenue stamp - Bft 30, 1925 Issue.
Others are known dated 23rd April 1926,
and ... 1927.

1938 KGVI Pictorial Definitive Issue - issued 17th February 1938.

These three KGVI pictorial definitives record the last known use of Perfins on Malta, 1d (SG219), 2d (SG221), 3d (SG223), and 2d (SG221a).



The colour of the 2d stamp was changed to red on the 8th March 1943, so we can put c1945 as a terminal date for use of Perfins in Malta.

Typical Bank documents bearing perforated stamps from the early 1920's.

BIN

THE ANGLO MALTESE BANK

Coupons of Bonds held by the Anglo Maltese Bank

discount
under custody R. No.
collateral security

Mr. *Chas Sant' Amunir*

Malta, 27 JUL 1921 19

TIP. EMPIRE PRESS

DESCRIPTION	COUPONS DUE	NO. OF COUPONS	VALUE OF EACH COUPON	£	s.	d.
<i>Italian 5% bond, July</i>	<i>July</i>	<i>1200</i>	<i>Lib 100</i>	<i>100</i>	<i>-</i>	<i>✓</i>
<i>do</i>	<i>do</i>	<i>450</i>	<i>25</i>	<i>50</i>	<i>-</i>	<i>✓</i>
<i>do</i>	<i>do</i>	<i>210</i>	<i>5</i>	<i>10</i>	<i>-</i>	<i>✓</i>
<i>do</i>	<i>do</i>	<i>25</i>	<i>2.50</i>	<i>5</i>	<i>-</i>	<i>✓</i>
				<i>Lib 165</i>	<i>-</i>	<i>✓</i>
					<i>3.50</i>	<i>✓</i>
				<i>Lib 161.50</i>		<i>✓</i>

Dist 30/ulp
in lib acc

FOR THE ANGLO MALTESE BANK.

N.B. - We reserve to ourselves the right to retain, at our Discretion, the amount of any Coupons returned to us unpaid by our correspondents.


COPIED

Mod. 5.

ANGLO - MALTESE BANK

Malta, 1 FEB 1922 192

Chas Sant' Amunir Esq.



<i>Dividend on</i>						
<i>10 shares Southern Pacific Co. Comm.</i>						
<i>Accrued \$ 15.00</i>	<i>at 50</i>	<i>£</i>	<i>3.89</i>			
<i>Comm ahead our comm exp</i>						<i>1.1</i>
			<i>£</i>	<i>3.7.8</i>		

FOR THE ANGLO MALTESE BANK.

COPIED

Both documents courtesy of Jeff Turnbull.

2. “CG/M” positively known used by *Carmelo Griscti*, Army & Navy Tailors, from a number of dated postcards - e.g. 25th June 1888, and 12th January 1898 (shown below). Another loose stamp, a 2d Rose (SG21) shown below, is known dated *18th July 1886*, the earliest known date on a Malta Perfin.

1885-1900



This is highly likely to have been the first Perfin used on Malta.

1885 Issue - introduced 1st Jan 1885.



SG21 Rose
From 1885



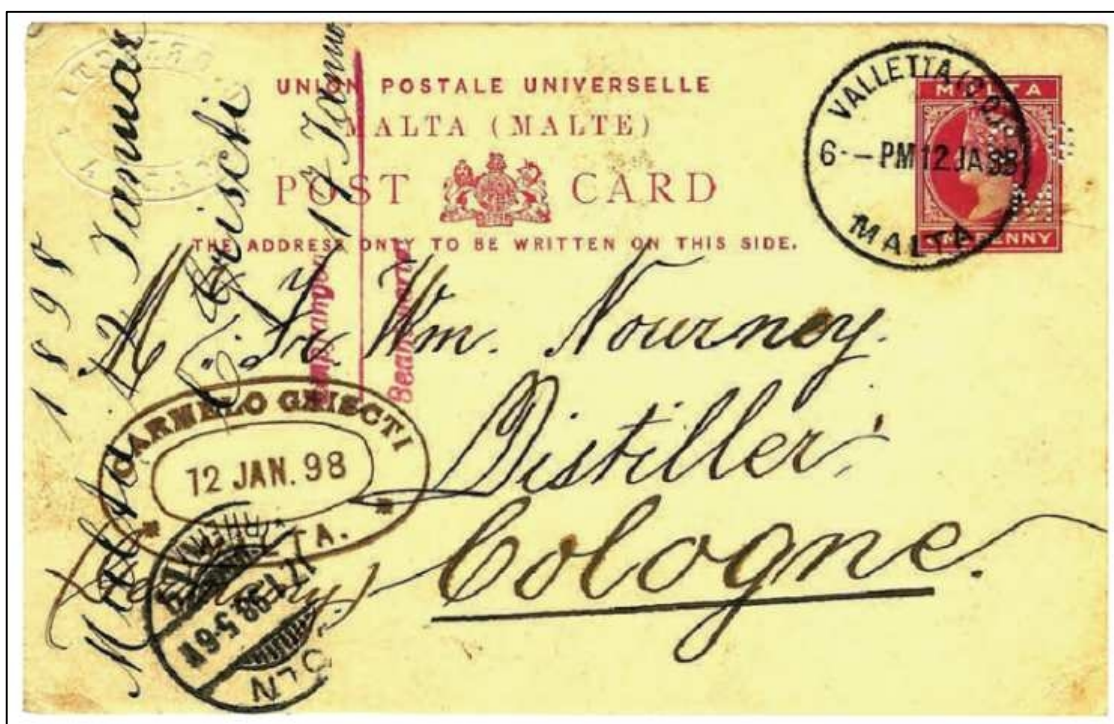
SG22 Carmine
From 1890



SG24-26 Blue (shades)



Although the Queen Victoria 1d and 2½d stamps weren't replaced until 1903, these loose stamps are likely to have been used during her reign.



Identified Post Card posted in Valletta (Chief Office), 12th January 1898.

The items shown for “CG/M” are courtesy of Peter Christian Hansen and Bob Szymanski.

3. “E.T.A.” - Thought to exist on a Maltese stamp, used by E T Agius & Co.

There follows, with help from *Peter Agius* (great-grandson of *Edward Tancred Agius*), a short study of the company both in Malta and the UK.

E T Agius & Co (Ltd).

It probably makes sense to start with the letter written in response to an enquiry published in the Malta Study Group’s Newsletter (January 1961).

Dear Mr Lander

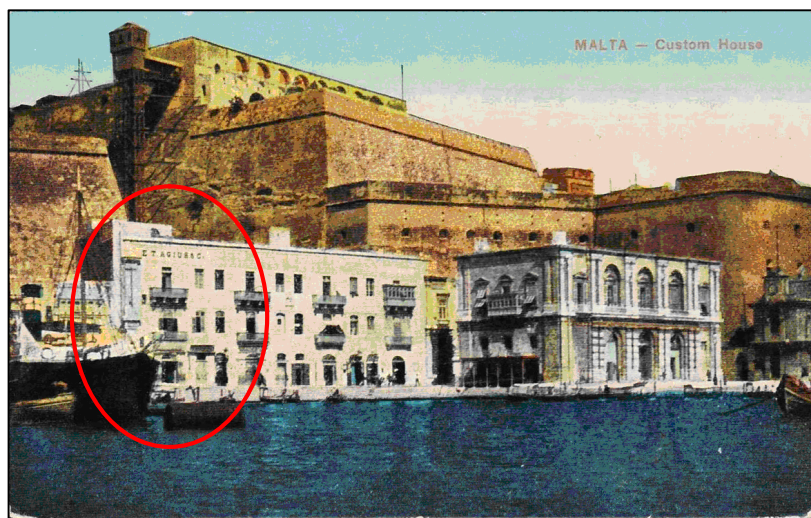
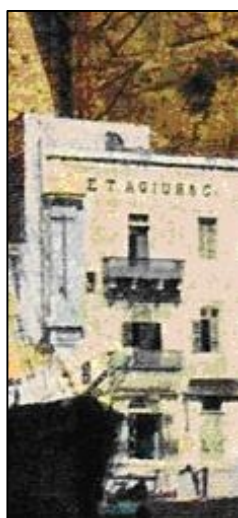
*Referring to the question of Maltese stamps perforated with initials, I heard indirectly from an acquaintance that he **possesses a Maltese stamp perforated with “E.T.A.”**. These are the initials of my late father’s firm - Edward T Agius - Coal & Shipping Agents of 101 Leadenhall St, London EC, which was wound up about 1925.*

These initials are also to be found on GB stamps of which I possess the 1/2d green, 2 1/2d purple on blue, 5d dull purple and blue, and 10d purple and carmine (1887-1892). I found these in Malta and they came off correspondence between the head office in London and the Malta office of the firm in question. Presumably the replies from Malta bore Maltese stamps perforated with the same initials? Do you know of anybody who has seen them?

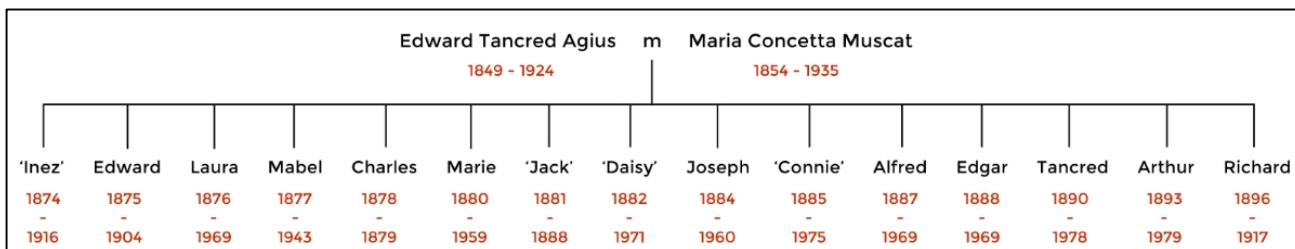
Yours sincerely, E G Agius.

The writer was *Edgar Emanuel Gordon Agius* (1888-1969), son of *Edward Tancred Agius* (1849-1924).

As far as is known, the existence of the “E.T.A.” die (the stops are not necessarily accurate, and may not even be present) on a Maltese stamp has not yet been confirmed. What isn’t in doubt though is that ‘E T Agius & Co’ had offices in Malta alongside the Customs House.



This Picture Post Card, probably dating to the WWI period, clearly shows the Harbour Offices of ‘E T Agius & Co’ - spotted on e-Bay by William Hall. Other similar cards are known to exist.



The Agius family tree - courtesy of *Peter Agius* and his **E T Agius family website** - <http://agiusww1.com/about/>

Edward Tancred Agius, [whose father was Tancredi Agius (1827-1872), a successful merchant operating between Alexandria and Malta], came to London in 1869 as a 19 year old entrepreneur with no real business experience. Sadly, his father Tancredi died young in 1872 leaving Edward as head of the family, while still making his way in the City (of London). Edward Tancred Agius and Maria Concetta Muscat were married in Malta in 1873, and soon after set up home in Hampstead, London - they went on to have fifteen children! Initially in partnership, Edward struck out on his own around 1880 starting a coal shipping business in London. As a businessman, Edward travelled extensively throughout Europe, Russia and across the Mediterranean.

Edward Tancred Agius lived at Heathfield Terrace, Chiswick (1872-1873), 11 Eton Road (1873-1880), 90 (later renumbered 52) Belsize Park Gardens (1880-1895), and 3 Belsize Grove (1895-1924). By 1893, the Electoral Rolls list him at 34 Grosvenor Place, and 4 Cail's Buildings, **Newcastle-on-Tyne**. Edward sent his brother, **Edgar Tancred Agius** (1863-1935), to work at the Newcastle Office in the early 1880's, and manage it from 1888.

Plans were drawn up in 1923 for the 'Malta Pavilion' at the British Empire Exhibition, in which Edward Tancred Agius was instrumental in ensuring that the Pavilion was built and ready for the opening day - Wednesday 23rd April 1924, fittingly, St George's Day.



Sadly, Edward Tancred Agius became terminally ill not long after and died at home on the 21st September 1924. The exhibition closed on the 1st November 1924, before re-opening on the 9th May 1925, but this time without the Malta Pavilion.



OBITUARY.

EDWARD T. AGIUS died on September 21, 1924. He was principal of the firm of E. T. Agius Ltd., coal exporters, of Lime Street, London, which he founded fifty-five years ago. He was until recently a member of Lloyd's, and he had been a member of the Baltic Exchange since 1869, being the oldest active member of that Institution. He had a large connection on the Continent, where both his industrial and social interests were extensive, and in 1904 was appointed a Chamberlain of the Court of the Vatican. He was elected a member of the Iron and Steel Institute in 1895.

The following **G. B. Perfins** are *thought* to have been used by the company established by Edward Tancred Agius (1849-1924) who was born in Alexandria, Egypt.

1880-1881



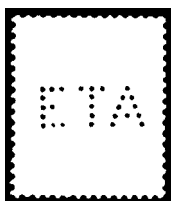
E4685.01



Known on:
 QV 1d (SG166)
 QV 1d Lilac (14-dot), dating to the end of 1881.

Illustrated stamp is postmarked with a London 'Diamond' (Chief Office) cancel.

1895-1900



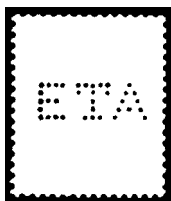
E4680.02



Known on:
 QV 1d Lilac (16-dot)
 QV Jubilee ½d (both), 1½d-2½d, 5d, 10d
 ED: ...July 1895. LD: 1 Oct 1898.

Illustrated stamp postmarked London, AP 7 97.

1900-1901



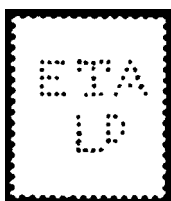
E4680.01



Known on:
 The *only stamp reported*, is postmarked Newcastle-on-(Tyne), dated AP 15/01.

These details plus those for "ETA/Lth" (E4690.01v) suggest the company took on 'Limited' liability in 1901.

1901-1905



E4690.01v



Known on:
 QV 1d Lilac (16-dot)
 QV Jubilee ½d (gn), 2½d
 KEVII ½d (bl-gn), 1d, 2½d
 ED: 20 Dec 1901. LD: 20 Oct 1903.
 The 'v' indicates variation in position of "Lth" relative to "ETA".
 Illustrated stamp postmarked (Newcastle)on-Tyne, AU 16/02.

The first two Perfins are only known used in London EC, and the two with the 'serif' "T" (probably produced by Sidney Allchin and sold 'over-the-counter') are only known used in Newcastle-on-Tyne. As well as Newcastle-on-Tyne, and London, there were also offices in Cardiff, Glasgow, and Malta. In passing, *Edgar Gordon Agius* (1888-1969) managed the Glasgow Office for a short while after WWI.

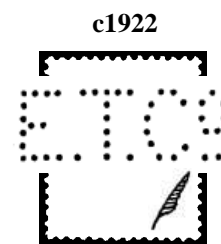


This OO gauge model of a 7-plank coal wagon N^o. 92 (built in 1900) shows the company also had premises in Southampton (at 71 High St, and The Parade, Cowes, Isle of Wight).

Also from 1910-1920, 'E T Agius & Co' of Southampton, owned the sloop '*Anglo Saxon*' (built in 1863), along with other ships, including in 1907, a 'Tyne Tug' '*Miner N^o. 3*' registered at Southampton.

4. “E.T.C°.” - ‘Eastern Telegraph Co’ (Suspected).

William Hall has suggested that this may have been used by the ‘Eastern Telegraph Co’ who are known to have had an office on Malta, but the ‘Exchange Telegraph Co’ probably had an office there as well. The ‘Eastern Telegraph Co’ is the more likely user, but what’s needed is a perfinned stamp on piece with a tantalising clue proving one or the other!



Note - In 1869, John Pender (later Sir) founded both the ‘Falmouth, Malta, Gibraltar Telegraph Co’ and the ‘British Indian Submarine Telegraph Co’, which connected the Anglo-Mediterranean cable (linking Malta to Alexandria using a cable manufactured by one of Pender's companies) to Britain and India, respectively. The London to Bombay telegraph line was completed in 1870, and in 1872 the three companies were merged with the ‘Marseilles, Algiers and Malta Telegraph Co’ to form the ‘Eastern Telegraph Co’, with John Pender (1815-1896) as chairman. The ‘Exchange Telegraph Co’ was established, also in 1872, to distribute financial and business information from the London Stock Exchange to subscribers.

These four stamps were introduced variously, depending on watermark, from 1914 through to 1922. They may well all date from the same year, 1922. They are:

KGV 2½d (SG52 or 76), 6d (SG80 or 102), 2/- (SG86 or 103), 2/6d (SG87 from 1919), and a 5/- Self Government (SG113 issued in 1922).



Note - The Perfin is too wide even for large sized stamps, so partials are inevitable!

5. “F.E/F” - user unknown.



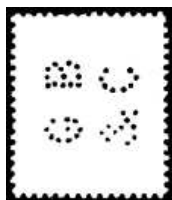
This is a unique item, known only on a Queen Victoria 1d overprinted ‘Revenue’.

This is one of five values (½d, 1d, 4d, 1/-, 5/-) overprinted ‘REVENUE’ by the Government Printing Office in Valletta specifically for fiscal use.

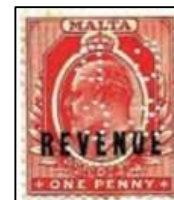
Postage stamps became valid for fiscal use in Malta in 1912.

6. "GB/&C" - The user was 'Galea Brothers & C^o' first reported by Graham Smeed in 'Stamp Collecting' 31st July 1980. Note - 'Galea Brothers & C^o' appears in the Malta Government Gazette 7 Feb 1902 - N^o. 4440, presumably when they were first set up.

1902-1910



As well as postage stamps and Post Cards (see below), the die is also known used on stamps overprinted 'Revenue'. These two probably date to c1902 (½d), and c1910 (1d).



Known on the following Edwardian postage stamps - depending on watermark:



½d (SG38 or SG47), 1d (SG39 or SG48), 2d (SG40 or SG50), 2½d (SG41 or SG52), and a 1d (SG49 - issued 1907).



Identified Post Card posted in Valletta, 18th August 1906 - courtesy of Hadrian Wood.

7. "JW" - user unknown.

1905-1915



An unidentified cover (spotted by William Hall) is known addressed to a Mr Joseph Wagner in Basle, Switzerland - could the initials "JW" on the Perfin be the recipient, Joseph Wagner, or is it just coincidence?



Stamps known include: KE7 1/2d (SG47), 1d (SG49), 2 1/2d (SG53), and KGV 1/2d (SG71), 1d (SG73 - dated 13 NO 15), and 2 1/2d (SG77).

Fake or Fortune?

William Hall has reported this KGV 1d (Multiple Crown - SG73) stamp, dating to c1918, with what looks like a letter "O". The somewhat ragged holes have been made from the back of the stamp. There is another small, ragged hole to the top left of the "O" which *may* have been made at the same time as the "O". I'm not convinced that this is a 'Perfin' in the true sense, and may well represent 'collateral damage' of some description.



8. “R\C\JP” - Reported originally by *Jeff Turnbull* in September 2018 after viewing v1.0 of this Malta Perfins study. Unfortunately the 4th letter is only a partial of a “B”, “P”, or “R”. As can be seen, the stamp is a KGV 3d from the ‘Postage & Revenue’ inscribed issue of 20th October 1930, which wasn’t replaced until the 3d Violet of KGVI on 17th February 1938.



Although there is a faint postmark lower right, the year can’t be made out, but *c1934* would be a reasonable estimate for the use of the stamp.

c1935

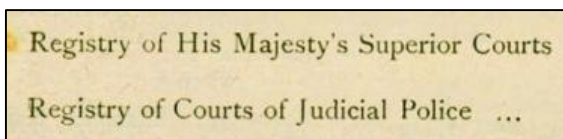


The missing letter is now known to be a “P” from a 6d Silver Jubilee on an Official Document that appeared on e-Bay at the end of July 2020. The stamp and document have two strikes of an official cancel



‘JUDICIAL POLICE COURTS/ MALTA’,
14th May 1935.

William Hall, the new owner of the item, has found a list of 23 Malta Government Departmental Reports for the fiscal year 1933-34, the top part of which is shown here.



This leaves little doubt that the ‘Perfin’ would have been applied on stamps used on documents handled by the Dept, in this case the ‘*Registry of Courts of Judicial Police*’, just one of the Government Depts in operation in Malta in the early-mid 1930’s. The document the stamp is attached to is a declaration in Maltese by *Camelo Villa* of how much money he brings in a day from his job, pension, annuities, and other income, possibly in support of a claim for financial help from the ‘Catholic Union of San Giesepp’, of which he’s a member.



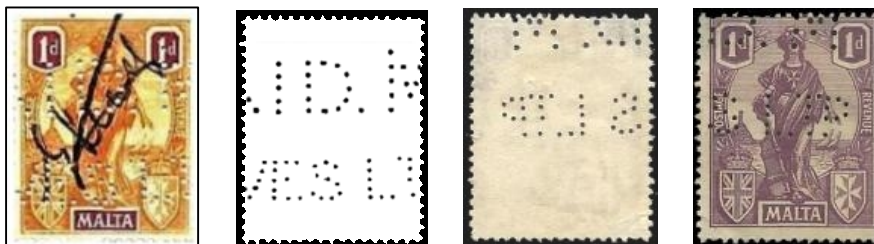
????



9. “R\S\C” - Published in ‘The World Perfins Catalogue (European Section)’ by the late Robert J Schwerdt (The Perfins Club - 1994). There is every *possibility* that the initials are those used by one of the Government Departments mentioned by William Hall above - the ‘*Registry of (His Majesty's) Superior Courts*’.

Stamp details unknown.

Miscellaneous ‘Perfins’ from by members of the Malta Study Circle, and Peter Maybury.



The two 1d ‘Melita’ stamps above were used on receipts and ‘cancelled’ by a company ‘carpet die’ receipt perforation - ‘(PA)ID. M/(??)VES L^{TD}..’. They date to the 1922-1925 period.



The two 2d stamps shown above are “PAID” dies usually used on receipts. The 2d Churchill stamp dates to 1966, and the 2m is from the 1972 Decimals issue.



There are any number of stamps used on receipts where the date portion has just caught the stamp. Three typical examples are shown above.



Two typical examples.

This last example showing a figure “4” on a QEII 6d (SG274), postmarked Valletta/Malta 4th February 1963, is likely to be a partial of a ‘Kodak’ two-line processing number with only the lower part visible. The code was applied at Kodak’s film processing laboratory (probably at Hemel Hempstead in the UK) through the return address on the envelope containing the canister of exposed film, *usually from the back* and often catching part of the stamp. I would think that the same code was applied to the roll of exposed film and acted as an identifier during the processing and dispatch of colour transparencies. This tracking technique was used by the company from the 1950’s through to the mid 1980’s.

This table records the individual stamps listed in the preceding study, shown under each die.

					1	2	3	4	5	6	7	8	9
	Value	Colour	SG No.	Issue Date	A.M./B.	CG/M	E.T.A.	E.T.C°..	F.E/F	GB/&C	JW	R\S\JP	R\S\C
(92)		Postage Stamp Totals			(68)	(3)	(0)	(5)	(1)	(7)	(6)	(2)	(0)
1	½d	Green	SG20	1 Jan 1885						½d R			
2	1d	Rose	SG21	1 Jan 1885		1d							
3	1d	Carmine	SG22	1890		1d			1d R				
4	2d	Grey	SG23	1 Jan 1885									
5	2½d	Dull blue	SG24	1 Jan 1885		2½d							
6	2½d	Bright blue	SG25	???									
7	2½d	Ultramarine	SG26	???									
8	4d	Brown	SG27	1 Jan 1885									
9	1/-	Violet	SG28	1 Jan 1885									
10	1/-	Pale violet	SG29	1890									
11	5/-	Rose	SG30	1 Jan 1886									
12	¼d	Brown	SG31	4 Jan 1901									
13	4½d	Sepia	SG32	4 Feb 1899									
14	5d	Vermilion	SG33	4 Feb 1899									
15	2/6d	Olive-grey	SG34	4 Feb 1899									
16	10/-	Blue-black - MALTA	SG35	4 Feb 1899	10/-								
17	1d on 2½d	Dull blue	SG36	4 July 1902									
18	1d on 2½d	Bright blue	SG37	4 July 1902									
19	½d	Green	SG38	12 Mar 1903						???			

					1	2	3	4	5	6	7	8	9
	Value	Colour	SG No.	Issue Date	A.M./B.	CG/M	E.T.A.	E.T.C°.	F.E/F	GB/&C	JW	R S J P	R S C
(92)		Postage Stamp Totals			(68)	(3)	(0)	(5)	(1)	(7)	(6)	(2)	(0)
20	1d	Black & Red	SG39	7 May 1903						???			
21	2d	Purple & Grey	SG40	12 Mar 1903						???			
22	2½d	Maroon & blue	SG41	... 1903						???			
23	3d	Grey & Purple	SG42	26 Mar 1903									
24	4d	Black & Brown	SG43	19 May 1904									
25	1/-	Grey & Violet	SG44	6 Apr 1903									
26	¼d	Red-brown	SG45	10 Oct 1905									
27	½d	Green	SG47	6 Nov 1904						???	½d		
28	1d	Black & Red	SG48	24 Apr 1905						1d			
29	1d	Red	SG49	2 Apr 1907						???	1d R		
30	2d	Purple & Grey	SG50	22 Feb 1905						???			
31	2d	Grey	SG51	4 Oct 1911									
32	2½d	Maroon & Blue	SG52	8 Oct 1904						???			
33	2½d	Bright blue	SG53	15 Jan 1911							2½d		
34	4d	Black & Brown	SG54	1 Apr 1906									
35	4d	Black & Red/Yellow	SG55	21 Nov 1911									
36	4½d	Brown	SG57	27 Feb 1905									
37	4½d	Orange	SG58	6 Mar 1912									
38	5d	Vermilion	SG58a	20 Feb 1905									
39	5d	Pale Sage-green	SG59	1910									
40	5d	Dull Sage-green	SG60	1914	5d								

					1	2	3	4	5	6	7	8	9
	Value	Colour	SG No.	Issue Date	A.M./B.	CG/M	E.T.A.	E.T.C ^o ..	F.E/F	GB/&C	JW	R S J P	R S C
(92)		Postage Stamp Totals			(68)	(3)	(0)	(5)	(1)	(7)	(6)	(2)	(0)
41	1/-	Grey & Violet	SG61	14 Dec 1904									
42	1/-	Black/Green	SG62	15 Mar 1911									
43	5/-	Green & Red/Yellow	SG63	23 Mar 1911									
44	¼d	Brown	SG69	2 Jan 1914									
45	¼d	Deep brown	SG69a	1919									
46	½d	Green	SG71	20 Jan 1914							½d		
47	½d	Deep green	SG71a	1919									
48	1d	Carmine-red	SG73	15 Apr 1914							1d		
49	1d	Scarlet	SG73a	1915									
50	2d	Grey	SG75	12 Aug 1914									
51	2d	Deep slate	SG75a	1919									
52	2½d	Bright blue	SG77	11 Mar 1914	2½d			???			2½d		
53	3d	Purple/Yellow	SG78	1 May 1920	3d								
54	3d	Purple/Orange-buff	SG78a	???									
55	4d	Black	SG79	21 Aug 1915									
56	4d	Grey-black	SG79a	28 Oct 1916									
57	6d	Dull and Bright purple	SG80	10 Mar 1914	6d			???					
58	6d	Dull purple & Magenta	SG80a	1918									
59	1/-	Black/Green - white back	SG81	2 Jan 1914	1/-								
60	1/-	On Green - green back	SG81a	1915									
61	1/-	On Blue-green - olive back	SG81b	1918									

					1	2	3	4	5	6	7	8	9
	Value	Colour	SG No.	Issue Date	A.M./B.	CG/M	E.T.A.	E.T.C°.	F.E/F	GB/&C	JW	R\S\JP	R\S\C
(92)		Postage Stamp Totals			(68)	(3)	(0)	(5)	(1)	(7)	(6)	(2)	(0)
62	1/-	On emerald surface	SG81c	1920									
63	1/-	On emerald back	SG81d	1921									
64	2/-	Purple & Bright blue/ <i>Blue</i>	SG86	15 Apr 1914	2/-			???					
65	2/-	Dull purple& Blue/ <i>Grey-blue</i>	SG86g	1921									
66	2/6d	Olive-green	SG87	1919	2/6d			2/6d					
67	2/6d	Olive-grey	SG87a	1920									
68	5/-	Green & Red/ <i>Yellow</i>	SG88	21 Mar 1917	5/-								
69	½d	Deep green - War Tax o/p	SG92	14 Dec 1917									
70	3d - EVII	Grey & Purple - War Tax o/p	SG93	15 Feb 1918									
71	10/-	Black - MALTA	SG96	6 Mar 1919	???								
72	¼d	Brown	SG97	12 Jan 1922									
73	½d	Green	SG98	19 Jan 1922	½d								
74	1d	Scarlet	SG99	24 Dec 1921	1d								
75	2d	Grey	SG100	16 Feb 1921	2d								
76	2½d	Bright blue	SG101	15 Jan 1922				???					
77	6d	Dull purple & Bright purple	SG102	19 Jan 1922				???					
78	2/-	Purple & Blue/ <i>Blue</i>	SG103	19 Jan 1922	2/-			???					
79	10/-	Black - MALTA	SG104	19 Jan 1922	???								
80	10/- SG o/p	Blue-black MALTA POSTAGE	SG105	12 Jan 1922									
81	½d SG o/p	Green	SG106	12 Jan 1922									
82	2½d SG o/p	Bright blue	SG107	12 Jan 1922									

					1	2	3	4	5	6	7	8	9
	Value	Colour	SG No.	Issue Date	A.M./B.	CG/M	E.T.A.	E.T.C ^o ..	F.E/F	GB/&C	JW	R S J P	R S C
(92)		Postage Stamp Totals			(68)	(3)	(0)	(5)	(1)	(7)	(6)	(2)	(0)
83	3d SG o/p	Purple/ <i>Orange-buff</i>	SG108	12 Jan 1922									
84	6d SG o/p	Dull & Bright purple	SG109	12 Jan 1922	6d								
85	1/- SG o/p	Black/ <i>Emerald</i>	SG110	12 Jan 1922									
86	2/- SG o/p	Purple & Blue/ <i>Blue</i>	SG111	12 Jan 1922	2/- o/p								
87	2/6d SG o/p	Olive-grey	SG112	12 Jan 1922	2/6d o/p								
88	5/- SG op	Green & Red/ <i>Yellow</i>	SG113	12 Jan 1922	5/- o/p			5/- o/p					
89	¼d SG o/p	Brown	SG114	12 Jan 1922									
90	½d SG o/p	Green	SG115	29 Apr 1922									
91	1d SG o/p	Scarlet	SG116	12 Jan 1922	1d								
92	2d SG o/p	Grey	SG117	12 Jan 1922									
93	2½d SG o/p	Bright blue	SG118	15 Jan 1922									
94	6d SG o/p	Dull & Bright purple	SG119	19 Apr 1922									
95	2/- SG o/p	Purple & Blue/ <i>Blue</i>	SG120	15 Jan 1922									
96	10/- SG o/p	Black - MALTA	SG121	9 Mar 1922									
97	¼d on 2d	Grey	SG122	15 Apr 1922									
98	¼d Melita	Brown	SG123	22 Aug 1922									
99	½d Melita	Green	SG124	1 Aug 1922	½d								
100	1d Melita	Orange & Purple	SG125	1 Aug 1922	1d								
101	1d Melita	Bright violet	SG126	25 Apr 1924	1d								
102	1½d Melita	Brown-red	SG127	1 Oct 1923	1½d								
103	2d Melita	Bistre-brown & Turquoise	SG128	28 Aug 1922	2d								

					1	2	3	4	5	6	7	8	9
	Value	Colour	SG No.	Issue Date	A.M./B.	CG/M	E.T.A.	E.T.C ^o ..	F.E/F	GB/&C	JW	R S J P	R S C
(92)		Postage Stamp Totals			(68)	(3)	(0)	(5)	(1)	(7)	(6)	(2)	(0)
104	2½d Melita	Ultramarine	SG129	16 Feb 1926									
105	3d Melita	Cobalt	SG130	28 Aug 1922	3d								
106	3d Melita	Black/ <i>Yellow</i>	SG131	16 Feb 1926	3d								
107	4d Melita	Yellow & Bright blue	SG132	28 Aug 1922	4d								
108	6d Melita	Olive-green & Reddish-violet	SG133	1 Aug 1922	6d								
109	1/- Duo	Indigo & Sepia	SG134	1 Aug 1922									
110	2/- Duo	Brown & Blue	SG135	1 Aug 1922	2/-								
111	2/6d Duo	Bright magenta & Black	SG136	28 Aug 1922									
112	5/- Duo	Orange-yellow & Bright ultra	SG137	28 Aug 1922									
113	10/- Duo	Slate-grey & Brown	SG138	28 Aug 1922	10/-								
114	£1 Melita	Black & Carmine-red (s/w wmk)	SG139	28 Aug 1922									
115	£1 Melita	Black & Bright-carm (up wmk)	SG140	14 May 1925									
116	2½d on 3d	Cobalt	SG141	3 Dec 1925	2½d on 3d								
117	2½d on 3d	Bright ultramarine	SG142	9 Dec 1925									
118	¼d Postage	Brown	SG143	1 Apr 1926									
119	½d Postage	Green	SG144	1 Apr 1926	½d								
120	1d Postage	Bright violet	SG145	1 Apr 1926	1d								
121	1½d Postage	Brown-red	SG146	1 Apr 1926	1½d								
122	2d Postage	Bistre-brown & Turquoise	SG147	1 Apr 1926	2d								
123	2½d Postage	Ultramarine	SG148	1 Apr 1926	2½d								
124	3d Postage	Black/ <i>Yellow</i>	SG149	1 Apr 1926									

					1	2	3	4	5	6	7	8	9
	Value	Colour	SG No.	Issue Date	A.M./B.	CG/M	E.T.A.	E.T.C ^o ..	F.E/F	GB/&C	JW	R\S\J\P	R\S\C
(92)		Postage Stamp Totals			(68)	(3)	(0)	(5)	(1)	(7)	(6)	(2)	(0)
125	4d Postage	Yellow & Bright blue	SG150	1 Apr 1926									
126	6d Postage	Olive-green & Violet	SG151	1 Apr 1926									
127	1/- Postage	Indigo & Sepia	SG152	1 Apr 1926									
128	2/- Postage	Brown & Blue	SG153	1 Apr 1926									
129	2/6d Postage	Bright magenta & Black	SG154	1 Apr 1926									
130	5/- Postage	Orange-yellow & Bright ultra	SG155	1 Apr 1926									
131	10/- Postage	Slate-grey & Brown	SG156	1 Apr 1926									
132	¼d	Brown	SG157	6 Apr 1926									
133	½d	Green	SG158	5 Aug 1926	½d								
134	1d	Bright violet	SG159	1 Apr 1927	1d								
135	1½d	Brown-red	SG160	7 Oct 1926	1½d								
136	2d	Bistre-brown & Turquoise	SG161	1 Apr 1927	2d								
137	2½d	Ultramarine	SG162	1 Apr 1927									
138	3d	Violet	SG162a	1 Apr 1927									
139	4d	Black & Red	SG163	6 Apr 1926									
140	4½d	Lavender & Ochre	SG164	6 Apr 1926									
141	6d	Violet & Scarlet	SG165	5 May 1926									
142	1/-	Black	SG166	6 Apr 1926									
143	1/6d	Black & Green	SG167	6 Apr 1926									
144	2/-	Black & Purple	SG168	6 Apr 1926									
145	2/6d	Black & Vermilion	SG169	6 Apr 1926									

					1	2	3	4	5	6	7	8	9
	Value	Colour	SG No.	Issue Date	A.M./B.	CG/M	E.T.A.	E.T.C ^o ..	F.E/F	GB/&C	JW	R S J P	R S C
(92)		Postage Stamp Totals			(68)	(3)	(0)	(5)	(1)	(7)	(6)	(2)	(0)
146	3/-	Black & Blue	SG170	6 Apr 1926									
147	5/-	Black & Green	SG171	5 May 1926									
148	10/- St Paul	Black & Carmine	SG172	9 Feb 1927									
149	6d Air Mail	Violet & Scarlet	SG173	1 Apr 1928									
150	¼d - P&R o/p	Brown	SG174	1 Oct 1928									
151	½d - P&R o/p	Yellow-green	SG175	1 Oct 1928									
152	1d - P&R o/p	Rose-red	SG176	1 Oct 1928	1d o/p								
153	1d - P&R o/p	Chestnut	SG177	5 Dec 1928	1d o/p								
154	1½d - P&R o/p	Chestnut	SG178	1 Oct 1928									
155	1½d - P&R o/p	Rose-red	SG179	5 Dec 1928									
156	2d - P&R o/p	Greenish-grey	SG180	1 Oct 1928	2d o/p								
157	2½d - P&R o/p	Blue	SG181	1 Oct 1928									
158	3d - P&R o/p	Violet	SG182	1 Oct 1928									
159	4d - P&R o/p	Black & Red	SG183	1 Oct 1928									
160	4½d - P&R o/p	Lavender & Ochre	SG184	1 Oct 1928									
161	6d - P&R o/p	Violet & Scarlet	SG185	1 Oct 1928	6d o/p								
162	1/- P&R o/p	Black	SG186	1 Oct 1928	1/- o/p								
163	1/6d - P&R o/p	Black & Green	SG187	1 Oct 1928	1/6d o/p								
164	2/- P&R o/p	Black & Purple	SG188	1 Oct 1928	2/- o/p								
165	2/6d - P&R o/p	Black & Vermilion	SG189	1 Oct 1928	2/6d o/p								
166	3/- P&R o/p	Black & Blue	SG190	1 Oct 1928	3/- o/p								

					1	2	3	4	5	6	7	8	9
	Value	Colour	SG No.	Issue Date	A.M./B.	CG/M	E.T.A.	E.T.C ^o ..	F.E/F	GB/&C	JW	R S J P	R S C
(92)		Postage Stamp Totals			(68)	(3)	(0)	(5)	(1)	(7)	(6)	(2)	(0)
167	5/- P&R o/p	Black & Green	SG191	1 Oct 1928	5/- o/p								
168	10/- P&R o/p	Black & Carmine	SG192	1 Oct 1928	10/- o/p								
169	¼d - P&R	Brown	SG193	20 Oct 1930									
170	½d - P&R	Yellow-green	SG194	20 Oct 1930	½d - PRi								
171	1d - P&R	Chestnut	SG195	20 Oct 1930	1d - PRi								
172	1½d - P&R	Rose-red	SG196	20 Oct 1930									
173	2d - P&R	Greenish-grey	SG197	20 Oct 1930	2d - PRi								
174	2½d - P&R	Blue	SG198	20 Oct 1930									
175	3d - P&R	Violet	SG199	20 Oct 1930	3d - PRi							3dPRi	
176	4d - P&R	Black & Red	SG200	20 Oct 1930									
177	4½d - P&R	Lavender & Ochre	SG201	20 Oct 1930									
178	6d - P&R	Violet & Scarlet	SG202	20 Oct 1930	6d - PRi								
179	1/- P&R	Black	SG203	20 Oct 1930	1/- PRi								
180	1/6d - P&R	Black & Green	SG204	20 Oct 1930	1/6d - PRi								
181	2/- P&R	Black & Purple	SG205	20 Oct 1930	2/- PRi								
182	2/6d - P&R	Black & Vermilion	SG206	20 Oct 1930	2/6d - PRi								
183	3/- P&R	Black & Blue	SG207	20 Oct 1930	3/- PRi								
184	5/- P&R	Black & Green	SG208	20 Oct 1930									
185	10/- P&R	Black & Carmine	SG209	20 Oct 1930	10/- PRi								
186	½d SJ	Black & Green	SG210	6 May 1935									
187	2½d SJ	Brown & Deep blue	SG211	6 May 1935									

					1	2	3	4	5	6	7	8	9
	Value	Colour	SG No.	Issue Date	A.M./B.	CG/M	E.T.A.	E.T.C°.	F.E/F	GB/&C	JW	R S J P	R S C
(92)		Postage Stamp Totals			(68)	(3)	(0)	(5)	(1)	(7)	(6)	(2)	(0)
188	6d SJ	Light blue & Olive-green	SG212	6 May 1935	6d							6d	
189	1/- SJ	Slate & Purple	SG213	6 May 1935	1/-								
190	½d Coronation	Green	SG214	12 May 1937									
191	1½d Coronation	Scarlet	SG215	12 May 1937									
192	2½d Coronation	Bright blue	SG216	12 May 1937									
193	¼d	Brown	SG217	17 Feb 1938									
194	½d	Green	SG218	17 Feb 1938									
195	½d	Red-brown	SG218a	8 Mar 1943									
196	1d	Red-brown	SG219	17 Feb 1938	1d								
197	1d	Green	SG219a	8 Mar 1943									
198	1½d	Scarlet	SG220	17 Feb 1938									
199	1½d	Slate-black	SG220b	8 Mar 1943									
199	2d	Slate-black	SG221	17 Feb 1938	2d								
200	2d	Scarlet	SG221b	8 Mar 1943	2d								
201	2½d	Greyish blue	SG222	17 Feb 1938									
202	2½d	Dull violet	SG222a	8 Mar 1943									
203	3d	Dull violet	SG223	17 Feb 1938	3d								
204	3d	Blue	SG223a	8 Mar 1943									
205	4½d	Olive-green & Yellow-brown	SG224	17 Feb 1938									
206	6d	Olive-green & Scarlet	SG225	17 Feb 1938									
207	1/-	Black	SG226	17 Feb 1938									

					1	2	3	4	5	6	7	8	9
	Value	Colour	SG No.	Issue Date	A.M./B.	CG/M	E.T.A.	E.T.C°.	F.E/F	GB/&C	JW	R\S\J\P	R\S\C
(92)		Postage Stamp Totals			(68)	(3)	(0)	(5)	(1)	(7)	(6)	(2)	(0)
208	1/6d	Black & Olive-green	SG227	17 Feb 1938									
209	2/-	Green & Deep blue	SG228	17 Feb 1938									
210	2/6d	Black & Scarlet	SG229	17 Feb 1938									
211	5/-	Black & Green	SG230	17 Feb 1938									
212	10/-	Black & Carmine	SG231	17 Feb 1938									
213	1d	Green	SG232	3 Dec 1946									
214	3d	Blue	SG233	3 Dec 1946									

					1	2	3	4	5	6	7	8	9	
	Value	Colour	SG No.	Issue Date	A.M./B.	CG/M	E.T.A.	E.T.C°.	F.E/F	GB/&C	JW	R\S\J\?	R\S\C	
Stocks & Shares														
GV	2/-	Green & Red			2/-									
GV	£1	Light Green & Red			£1									
GV	2/-	Green & Red			2/-									
Revenue Stamps														
GV	1d	Green			1d									
Postal Stationery														
QV QV QV QV	1d postcard	Red				JU 28/88								
						AU 29/90								
						MY 4/92								
						12 JA 98								
E7	1d postcard	Red								18 AU 06				

Figures correct to **1st February 2022.**