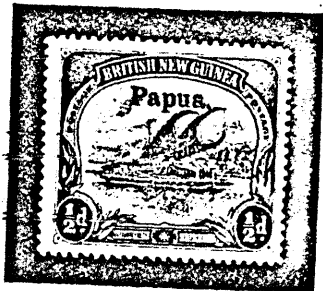




CHAPTER IV.

The "Papua" Provisional Series, 1906-7.



Large overprint "Papua."

THE name of the colony was, on 1st September, 1906, changed to Papua, the name believed to have been given to the island by the Portuguese navigator, Don Jorge de Meneses, in 1526. To bring the postage stamps in line with the newly recognised name they were overprinted and issued 8th November, 1906, with the word Papua in lower case letters, except for the initial. The letters of

the overprint as at first applied were of a heavy-faced, slightly elongated type. The second type of overprint is lighter and more squat.

The first type of overprint is known on certain of the paper and watermark varieties described in the previous chapter, viz. :—

Thick paper, horizontal watermark, 4d., 6d., 1s., 2s. 6d.

Thick paper, vertical watermark, 2½d., 4d., 6d., 1s.

Thin paper, horizontal watermark, 6d. (?)

Thin paper, vertical watermark, ½d., 1d., 2d., 4d. (?), 1s. (?)

The overprint appears to have been set up to print a complete sheet of thirty stamps at one impression. There are no peculiarities to note in this type.

The white leaf varieties of the ½d., 2d., 2½d., and 1s. exist with this overprint, and the vignette plates we have seen are :—

Plate 1—2½d., 4d., 6d., 2s. 6d.

Plate 2—½d., 1d., 2d., 2½d., 6d., 1s.



Small overprint "Papua."

In the issue of *Ewen's Weekly Stamp News* for 13th July, 1907, it is reported that *some of the values* were exhausted, and on 20th May a correspondent of that journal had been informed at the G.P.O. that sets could not be supplied "until a further supply arrived from the printers in Australia." The second type of overprint began to make its appearance about June, 1907.

The second, or smaller, type of the word "Papua" was set up in the same way to overprint a sheet of thirty stamps at one impression, but this time it has not been devoid of some minute differences, which have been duly noted by specialists. Stamps 10, 16, and 21 have what is frequently termed an inverted d for the second p in Papua. It would perhaps be more correct to describe it as the catalogue gives it, *viz.* as a "p" with a defective foot, the projection to the left of the perpendicular stroke being broken away. Had it been an inverted "d" it would have almost certainly been out of alignment. Stamp No. 17 on this setting has the first two letters—"Pa"—of Papua slightly raised above the level of the rest of the word.

A peculiarity very common to the stamps with this overprint is to have Nos. 4 and 16 on the sheet pierced with a pinhole through the centre of the dotted circular ornament in the horizontal band beneath the picture. This may have been due to some method for keeping the stamps in the correct position to receive the overprint.

The small type of overprint has been found in the following paper varieties:—

Thick paper, horizontal watermark, 1s., 2s. 6d.

Thick paper, vertical watermark, 2½d., 1s. (?), 2s. 6d.

Thin paper, horizontal watermark, ½d., 2½d.

Thin paper, vertical watermark, ½d., 1d., 2d., 4d., 6d., 1s., 2s. 6d.



6d. Double overprint in a pair (Nos. 16, 17).



Overprint reading downwards (No. 25).

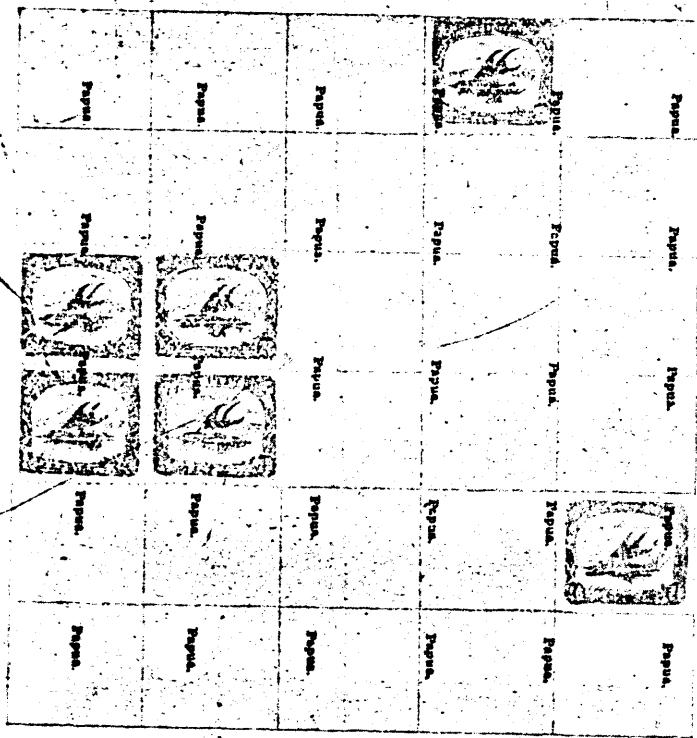


Diagram of partly reconstructed sheet of the small overprint reading downwards, showing varieties produced.

The 6d. occurs with double overprint and the 2s. 6d. with triple overprint. The double overprint on the 6d. has two perfect impressions, not overlapping each other at all. The first impression was printed too high up, so that on some of the stamps on the sheet the word is partly lost in the dark colour of the frame designs. This, no doubt, was the reason for the second overprinting of the 6d. The 2s. 6d. has all three impressions close together and two of them are faint. Blurred impressions, which have the appearance of being double in parts, are simply due to the slipping of the paper or type after the first contact. Such specimens we have seen of the 2½d. and 6d.

In addition to a few badly placed overprints, the 2s. 6d. stamp exists with the overprint reading downwards. In Mr. Ashby's collection is a plain proof of the complete original overprint of the thirty repetitions of the name Papua in the small type. It is on transparent paper, and by adjusting this over a sheet of the regular overprinted stamps one sees that it fits over the overprinted words exactly. By turning it sideways, so that Papua reads down the stamps (as in the diagram on page 40), one is able to see the complications of varieties created by this one sheet of the 2s. 6d. stamp, which was printed upon in this way. Stamps Nos. 1, 2, 3, 5, 21, 22, 23, 25, 26, 27, 28, 30, shew the complete word once; Nos. 4, 24, and 29 shew the complete word twice. On all the stamps on the second row (of the engraved sheet) the word Papua runs over the perforations slightly on to the row below. The horizontal rows two and three have one surcharge between each vertical pair, except the fourth stamps and those rows which have two overprints between them.

The vignette plates of the sheets examined bearing the small overprint are as follows:—

Plate 1.— $\frac{1}{2}$ d., $2\frac{1}{2}$ d., 1s., 2s. 6d.

Plate 2.— $\frac{1}{2}$ d., 1d., 2d., $2\frac{1}{2}$ d., 4d., 6d., 1s., 2s. 6d.

Ewen's Weekly Stamp News (No. 427) gives particulars from an official source of the numbers printed of the two varieties of overprint. The face value of the stamps overprinted is approximately £3888 2s. 6d., the numbers of each denomination being as given in the following table:—

Denomination.	Large Type.	Small Type.	Total.
$\frac{1}{2}$ d.	11,040	18,150	29,190
1d.	12,960	35,100	48,060
2d.	29,610	40,560	70,170
$2\frac{1}{2}$ d.	12,000	13,230	25,230
4d.	2970	5135	8105*
6d.	6300	5255	11,555*
1s.	5970	7625	13,595*
2s. 6d.	2730	10,696	13,426*

The 2s. 6d. stamp of this series with small overprint is known punctured with the letters O.S., signifying *On Service*, for use by the Government departments in Papua.

*These figures, which evidently include part sheets, may probably be more correctly, 8100, 11,550, 13,590, 13,410, as previous given by the same authority.



CHAPTER V.

The "Papua" Permanent Series, 1907-8.



BY November, 1907, a commencement was made with the issue of the $\frac{1}{2}$ d. and 4d. denominations of a new set, in which the name PAPER was incorporated in the design. The same general design was preserved with the word PAPER inserted in the British New Guinea label. The design appears to have been copied from the old stamps by a photographic process for transferring the design on to the lithographic stone, and in doing this a slight enlargement has been made.

The stamps appear to have been printed at Melbourne, and they have either of the Melbourne single line perforations, the one gauging $12\frac{1}{2}$ and the other 11.

In lithographing these stamps a separate stone would be required for the frame design of each value, but one stone appears to have done duty for the central design for the 1d., 2d., $2\frac{1}{2}$ d., 4d., 6d., and 1/- stamps. For the $\frac{3}{4}$ d. stamp—the first to be issued—a separate vignette stone has been made, which may be distinguished by several minor flaws common to lithographic impressions. The most prominent is a big black spot which occurs on stamp No. 21 under the second P of PAPUA on the $\frac{3}{4}$ d., and does not occur on any of the other values. The general vignette stone for the other values shews a prominent and curious variety on stamp 23, described as a "rift in the clouds."

All the stamps shew minor differences, due to the manner of production. The labels in which the name PAPUA has been inserted shew variations in the joining up with the frame design, and the letters of the word PAPUA vary also. These varieties are of little significance, but a few of the more prominent ones have been added to the Check List for collectors who wish to go so far.

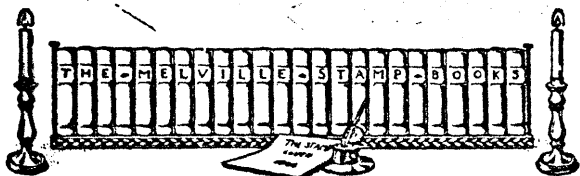
The paper on which the stamps were printed is water-marked Crown over A, which watermark occurs either upright or inverted, and as the watermark designs did not fit the stamps, and the sheets and printing surface are very nearly square, it is not improbable that they may be found with the watermark sideways. The perforation 11 seems to have been the only one used for the $\frac{3}{4}$ d.

and 1d. values, but the 4d., perf. $12\frac{1}{2}$, was chronicled almost concurrently with the same denomination perforated 11. The other values are known with each variety of perforation.

In the matter of colours, the printers have followed those of the original set, though, necessarily, the results are quite different. There is a good range of shades of all values.

The white leaf varieties are partly repeated owing to the method of copying from the earlier issue to produce the transfers for the lithographed issue. In the case of the $\frac{3}{4}$ d. stamp, however, stamp No. 20 has been retouched and so the white leaves do not shew; the lines of shading on the leaves do not exactly correspond with the normal shading, and it is clearly a case of retouching. The $\frac{3}{4}$ d. shews the white leaves on stamp 28; the 1d. shews a prominent break of the inner line of colour at the bottom of stamp 28; the 2d. has stamp No. 20 shewing the leaves but faintly shaded, but if this were copied from the proper white leaf variety of British New Guinea there would appear to have been a slight retouching; No. 27 has the thin outer line at the bottom missing for the greater part of its length, and the $2\frac{1}{2}$ d. shews the white leaves on Nos. 20 and 27.

All values of this set exist with the perforated letters "O.S.", some with both perforations. A copy of the 2d. violet and black is known with the "O.S." inverted. Punctured "officials" such as these are not always recognised by collectors, and being of minor interest we include them only as minor varieties of the regular stamps in our Check List.



CHAPTER VI.

Bibliography.

IN addition to the following items it would be well for the student to consult the files of the *Australian Philatelist* and *Ewen's Weekly Stamp News*, which contain numerous references to the issues of British New Guinea.

INDEX TO THE CHIEF PRINTED ARTICLES AND PAPERS IN PHILATELIC WORKS AND PERIODICALS.

ABBREVIATIONS.

- Aust. P.—*Australian Philatelist*.
 E.W.S.N.—*Ewen's Weekly Stamp News*.
 G.S.W.—*Gibbons' Stamp Weekly*.
 P.S.—*The Postage Stamp*.

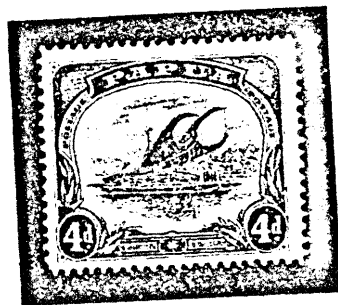
NOTE.—Roman figures thus—V.—denote the volume, and Arabic figures—135—indicate the page. In a few cases the date takes the place of the volume number.

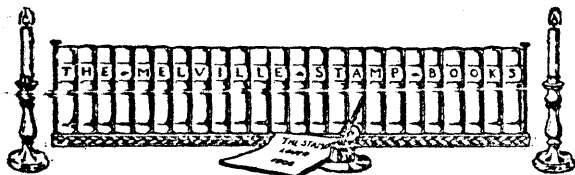
GENERAL. *Papua: its Posts and Postage Stamps*. By H. G. Jobson. July, 1909. Sidmouth: published by the author, 21 pp., $6\frac{1}{2} \times 4\frac{1}{2}$; [Anthrobus], G.S.W., VIII., 295, 320, reprinted in E.W.S.N., 451, and in P.S., II., 76; [Ashby], G.S.W., IX., 11; [Evans], G.S.W., VIII., 59, reprinted in P.S., II., 209; [Nankivell], G.S.W., III., 161, P.S., II., 303; [Van Weenen], Aust. P., IX., 82, 110; reprint from Aust. P. in P.S., IV., 71.

BIBLIOGRAPHY.

47

- OFFICIAL STAMPS, *i.e.* punctured "O.S.", E.W.S.N., 498, 500, 508, 525; Aust. P., XV., 79.
- PAPER VARIETIES, E.W.S.N., 450, 451; see also "General" [Anthrobus, Evans, Jobson].
- PAPUA OVERPRINTS. [Quantities], E.W.S.N., 408, 412, 427 [small overprint varieties], 434.
- PAPUA PERMANENT SERIES, E.W.S.N., 436.
- POSTMARKS [Ashby]. The Record of the Philatelic Students' Fellowship, 1908, printed for private circulation. Pp. 2, 3. *Plate. ["Papua" postmark], E.W.S.N., 395.
- VARIETIES. E.W.S.N., 452, 470, 473, 475, 476, 477, 481, 489, 491, 503, 511, etc.; P.S., III., 79.





CHAPTER VII.

Check List.

Temporary Stamps.

1888-1901.—Queensland stamps used in British New Guinea prior to the introduction of distinctive stamps. Only to be identified by the postmarks.

(i) N.G. bar cancellation.

2d. blue (1882-3), perf. 12.

4d. pale yellow (1882-3), perf. 12.

(ii) With Port Moresby bar cancellation B.N.G. (with stops), and circular town marks.

½d. deep green (1890-94), perf. 12½.

1d. vermilion-red " "

2d. pale blue " "

2½d. carmine " "

1s. pale mauve (1882-3), perf. 12.

1s. mauve, thick paper (1894-5), perf. 12.

1d. deep vermilion-red " perf. 12½, 13;
with *burele* band.

½d. green, deep green (1895-6), perf. 12½, 13.

2d. blue " "

2½d. rose " "

1d. vermilion (1896) " "

½d. deep green (1897-1907), " "

1d. orange-vermilion, " "

1d. vermilion, " "

2d. blue, " "

2½d. purple on blue, " "

6d. yellow-green, " "

(iii) With Samarai bar cancellation BNG (without stops) or circular town postmarks.

CHECK LIST.

49

2s. 6d. vermilion (February, 1890), thick paper, upright watermark.

½d. green, deep green (1895-96), perf. 12½, 13.

2½d. rose " "

5d. purple-brown " "

1d. vermilion (1897-1907), " "

2d. deep blue " "

3d. deep brown " "

5d. purple-brown " "

Special Issues.

1901-5.—Engraved and printed by Messrs. De La Rue & Co., London. Watermarked rosettes. Perf. 14 (nearly). The vignette is in every case in black, the colours given in the list being those of the frames.

½d. yellow-green.

Thick paper, horizontal watermark.

" " vertical "

Thin " horizontal "

" " vertical "

Shades. [Note.—The thin paper, horizontal watermark variety is only known deep yellow green].

White leaf varieties (Nos. 20, 28).

Single line perforation.

Comb perforation.

Part double perforation.

Vignette plate 1.

" " 2.

1d. lake.

Thick paper, horizontal watermark.

" " vertical "

Thin " horizontal "

" " vertical "

Shades.

Single line perforation.

Comb perforation.

Part double perforation.

Vignette plate 1.

" " 2.

> Double print (frame).

2d. violet.

Thick paper, horizontal watermark.

" " vertical "

Thin " " "

Shades. " " "

Single line perforation.

Comb perforation.

Part double perforation.

Vignette plate 1.

" " 2.

? Double print (frame).

2½d. ultramarine.

Thick paper, horizontal watermark.

" " vertical "

Thin " horizontal "

" " vertical "

Shades. [Note.—The thin paper, horizontal watermark variety is only known cobalt colour.]

White leaf varieties (Nos. 20, 27).

Single line perforation.

Comb perforation.

Part double perforation.

Vignette plate 1.

" " 2.

? Double print (frame).

4d. sepia.

Thick paper, horizontal watermark.

" " vertical "

Thin " " "

Shades. " " "

Single line perforation.

Comb perforation.

Vignette plate 1.

" " 2.

6d. myrtle-green.

Thick paper, horizontal watermark.

" " vertical "

Thin " " "

Shades. " " "

Single line perforation.

Comb perforation.

Vignette plate 1.

" " 2.

1s. orange.

Thick paper, horizontal watermark.

" " vertical "

Thin " " "

Shades.

White leaf (faintly shewn on No. 28).

Single line perforation.

Comb perforation.

Vignette plate 1.

" " 2.

2s. 6d. brown.

Thick paper, horizontal watermark.

" " vertical "

Thin " " "

Shades.

Single line perforation.

Comb perforation.

Vignette plate 1.

" " 2.

1906-7.—The same stamps, with additional overprint "PAPUA" in heavy-faced, elongated type, styled "large overprint."

½d. yellow-green.

Thin paper, vertical watermark.

Shades.

White leaf varieties (Nos. 20, 28).

Vignette plate 2.

1d. lake.

Thin paper, vertical watermark.

Vignette plate 2.

2d. violet.

Thin paper, vertical watermark.

White leaf varieties.

Vignette plate 2.

2½d. ultramarine.

Thick paper, vertical watermark.

Shades.

White leaf varieties (Nos. 20, 27).

Vignette plate 1.

2.

(?) Double print (frame).

4d. sepia.

Thick paper, horizontal watermark.

Thin " " vertical " (?)

Part double perforation. " "

Vignette plate 1.

2.

6d. myrtle-green.

Thick paper, horizontal watermark.

Thin " " vertical " (?)

Thin " " horizontal " (?)

Part double perforation. " "

Vignette plate 1.

" " 2.

1s. orange.

Thick paper, horizontal watermark.

Thin " " vertical " (?)

Thin " " " " " (?)

White leaf variety. " "

Vignette plate 2.

2s. 6d. brown.

Thick paper, horizontal watermark.

Part double perforation.

Vignette plate 1.

1907.—The same, but overprinted "PAPUA" in smaller and rounder type, called "small overprint." Overprint in black.

½d. yellow-green.

Thin paper, horizontal watermark.

" " vertical " "

White leaf varieties.

Defective "p" in Papua (Nos. 10, 16, 21).

Raised "Pa" in Papua (No. 17).

Vignette plate 1.

" " 2.

1d. lake.

Thin paper, vertical watermark.

Shades.

Defective "p" in Papua (Nos. 10, 16, 21).

Raised "Pa" in Papua (No. 17).

Vignette plate 2.

2d. violet.

Thin paper, vertical watermark.

White leaf varieties.

Defective "p" in Papua (Nos. 10, 16, 21).

Raised "Pa" in Papua (No. 17).

Vignette plate 2.

2½d. ultramarine.

Thick paper, vertical watermark.

Thin " horizontal " "

Shades. [Note.—The horizontal watermark variety has distinct shades of cobalt and blue.]

White leaf varieties (Nos. 20, 27).

Defective "p" in Papua (Nos. 10, 16, 21).

Raised "Pa" in Papua (No. 17).

Vignette plate 1.

" " 2.

4d. sepia.

Thin paper, vertical watermark.

Shades.

Defective "p" in Papua (Nos. 10, 16, 21).

Raised "Pa" in Papua (No. 17).

Vignette plate 2.

6d. myrtle-green.

Thin paper, vertical watermark.

Shades.

Defective "p" in Papua (Nos. 10, 16, 21).

Raised "Pa" in Papua (No. 17).

Double overprint.

Vignette plate 2.

1s. orange.

Thick paper, horizontal watermark.

" " vertical "

Thin " " "

Shades.

White leaf variety (No. 28).

Defective "p" in Papua.

Raised "Pa" in Papua.

Vignette plate 1.

" " 2.

2s. 6d. brown.

Thick paper, horizontal watermark.

" " vertical " (?)

Thin " " "

Shades.

Part double perforation.

Defective "p" in Papua (Nos. 10, 16, 21).

Raised "Pa" in Papua (No. 17).

Overprint impressed thrice.

Overprint reading downwards.

Vignette plate " " (double).

" " 2.

Punctured "O.S."

1907-8.—Similar design, but with word PAPUA incorporated in design in lieu of BRITISH NEW GUINEA. Lithographed in Melbourne. Perforated 11 and perforated 12½. Watermarked Crown over A. Centres in black.

½d. yellow-green.

Perforated 11.

Watermark inverted.

Shades.

Black spot under second "p" of Papua (No. 21).

Leaves retouched (No. 20).

White leaf variety (No. 28).

Punctured "O.S."

1d. carmine.

Perforated 11.

Watermark inverted.

Shades.

"Rift in clouds" variety (No. 23).

Punctured "O.S."

2d. violet.

Perforated 11.

" 12½.

Watermark inverted.

"Rift in clouds" variety (No. 23).

Punctured "O.S."

" " inverted.

2½d. ultramarine.

Perforated 11.

" 12½.

Watermark inverted.

White leaf varieties (Nos. 20, 27).

"Rift in clouds" variety (No. 23).

Spaced "pu" of Papua (No. 25).

Punctured "O.S."

4d. sepia.

Perforated 11.

" 12½.

Watermark inverted.

"Rift in clouds" variety (No. 23).

Punctured "O.S."

6d. myrtle-green.

Perforated 11.

" 12½.

Watermark inverted.

"Rift in clouds" variety (No. 23).

Punctured "O.S."

1s. orange.

Perforated 11.

" 12½.

Watermark inverted.

"Rift in clouds" variety (No. 23).

Punctured "O.S."