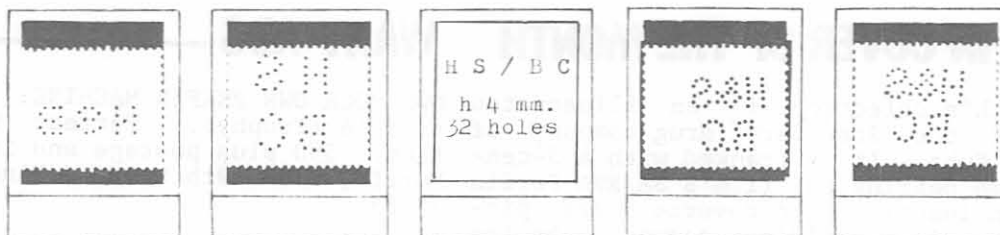


PERFINS OF THE HONGKONG AND SHANGHAI BANK — by Jan Prins

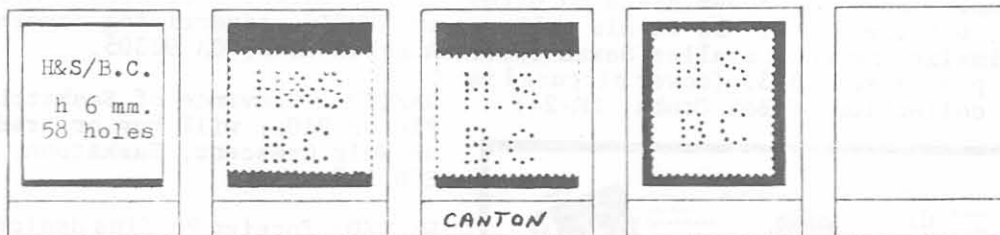
The Hongkong and Shanghai Banking Corporation is one of the largest banks in the Far East. It is incorporated in Hongkong with limited liability. Its branches in various parts of the orient have used Perfins, as indicated by the illustrations below. Also known are four Perfin patterns used by the bank's offices in Great Britain and one used in New York.

Note: some of the Perfin patterns illustrated below are retouched Xerox copies and may not be precisely like the originals in the spacing of holes. However, all of them should be close enough reproductions to allow proper identification.

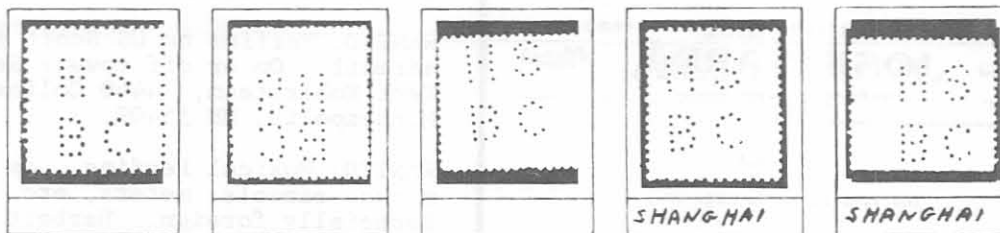
HONG KONG.



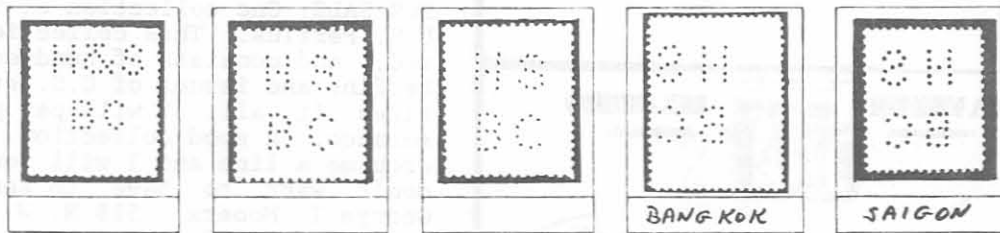
BRITISH OFFICES IN CHINA



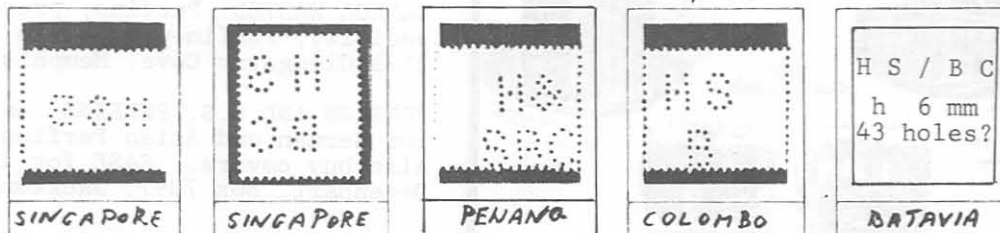
CHINA



JAPAN

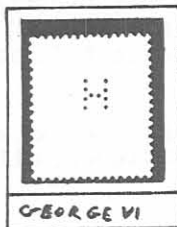


STRAITS SETTLEMENTS

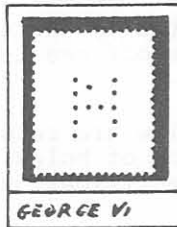


GREAT BRITAIN

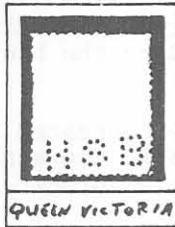
U.S.A



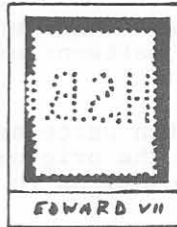
GEORGE VI



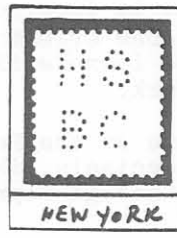
GEORGE VI



QUEEN VICTORIA



EDWARD VII



NEW YORK