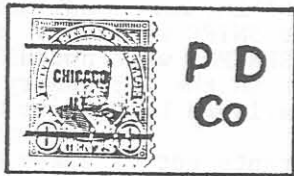


Al Gerstenberger (#1067) suggests that Perfin precancels may be mounted face up with an outline of the Perfin next to them. This will prove which town used a certain Perfin and the Perfin catalog will identify the user.



The Perfin outline may be traced onto the album page next to where the stamp will be mounted (as illustrated above) by shining the light from a small desk lamp through the holes.