

Peruvian Question

Willem A. Smetsers (LM101)

The card shown below was sent from Mision Arona, Peru to Belgium. The stamp is on the front (see below) rather than on the reverse. The stamp is overprinted "Peru" in gothic letters. The cancellation is a large oval which is nor readable. The stamp and card is punched "1914". Any ideas why?

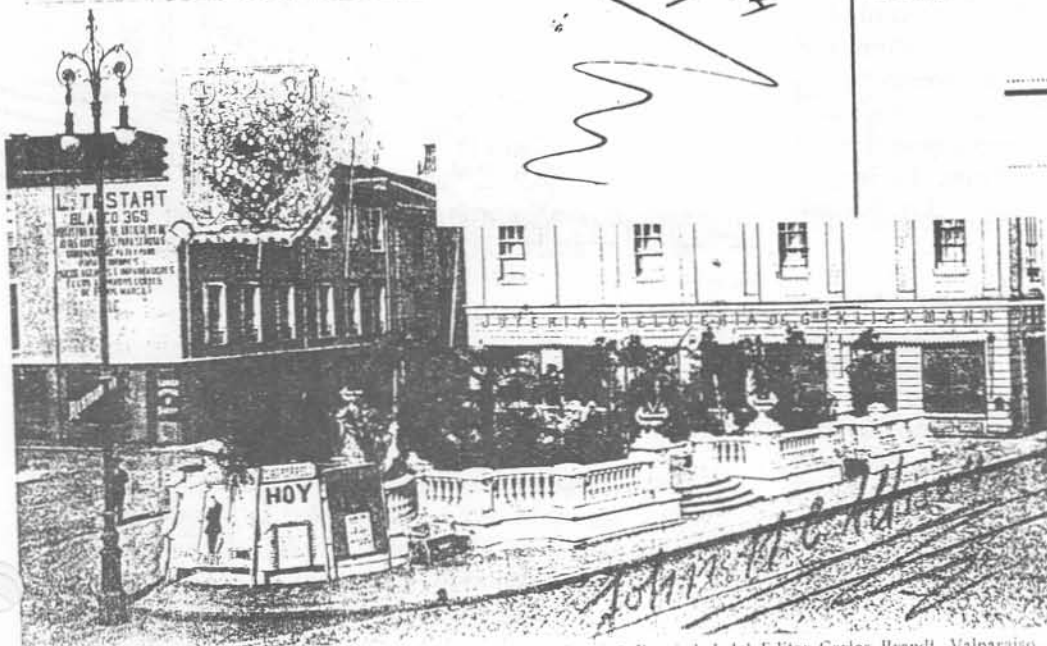
(Comunicaciones)

*From
Mision M. Garcia Allmon
Arona (Peru) 3/1/14*

Tarjeta Postal

(Solo para la Direccion)

*Mision T. Lora Garcia
Longue Rue Potthuck 81
Amers
Belgique*



VALPARAISO. PLAZA ANIBAL PINTO.

No. 4015 Propiedad del Editor Carlos Brandt, Valparaiso.