

Collectors are invited to help search for the missing letters from the illustrated alphabets, and report any that you find to the author for future publication.

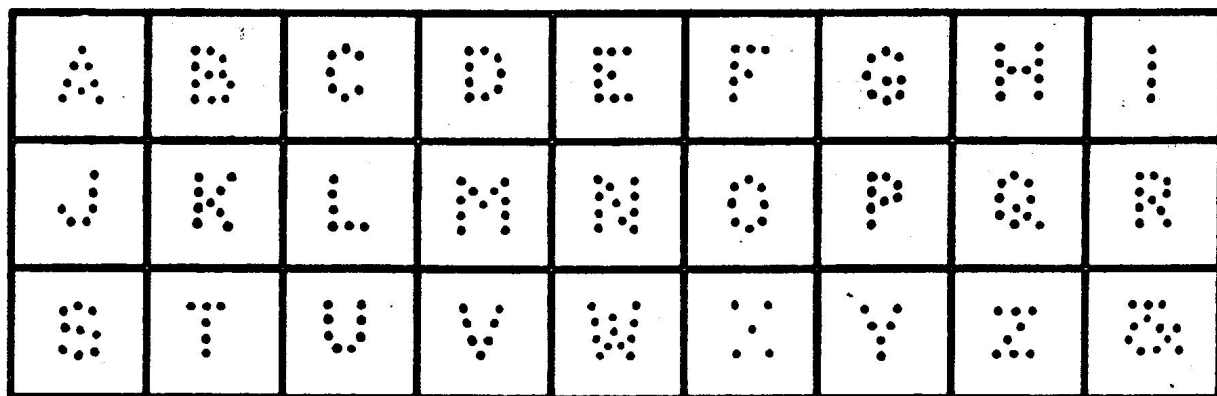
My Bulletin article (Aug 1992) illustrating perfins from the German Michelius affixer shows how easily an alphabet can be reconstructed especially when characteristic lettering is involved or the perfins are found on specific types of stamps. Since publication, Gerry Soutar and Mr Schmelter have added the letters U and Z, and although taken from German perfins they are still part of the same alphabet.

A	B	C	D	E	F	G	H	I
J	K	L	M	N	O	P	Q	R
S	T	U	V	W	x	y	Z	•••

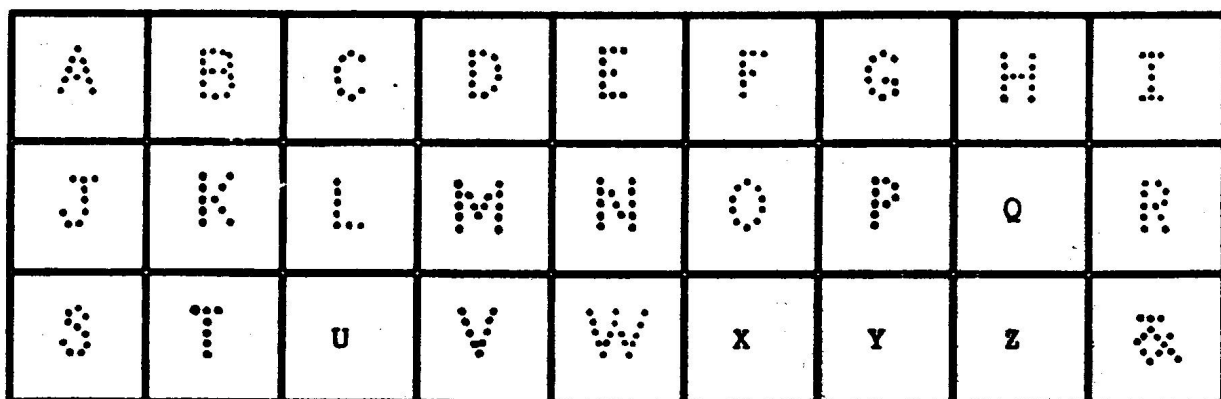
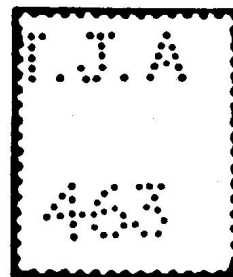
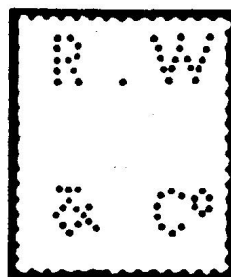
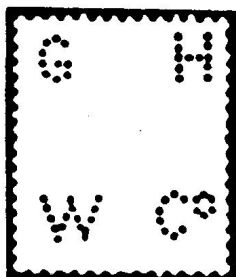
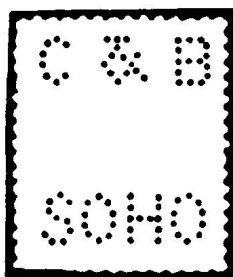
Two other alphabets also appeared in print during 1992. The first in Bulletin No.256 shows the 'Standard' alphabet found on POKO dies. This particular type of German affixing machine appears to have been introduced into Great Britain around 1927 as the earliest date recorded is 19 September 1927.

A	B	C	D	E	F	G	H	I
J	K	L	M	N	O	P	Q	R
S	T	U	V	W	x	y	Z	•••

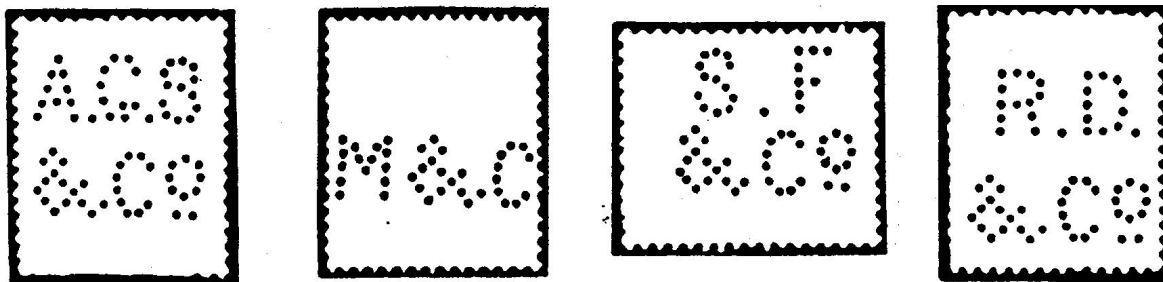
The second is the alphabet used by Slopers, after their premises were blitzed in May 1941, and used for many of their 'Provisional' and later regular dies. The illustrations for this alphabet have been taken from the newly published 'Perfin Society Catalogue of Sloper's Wartime Provisionals'.



I am also attempting to reconstruct three other alphabets. The first was used by Slopers on early Queen Victoria 1d Reds and other contemporary issues. The letters are characterised by fine holes and the placement of letters away from the centre of the stamp to avoid disfiguring the Queen's profile.

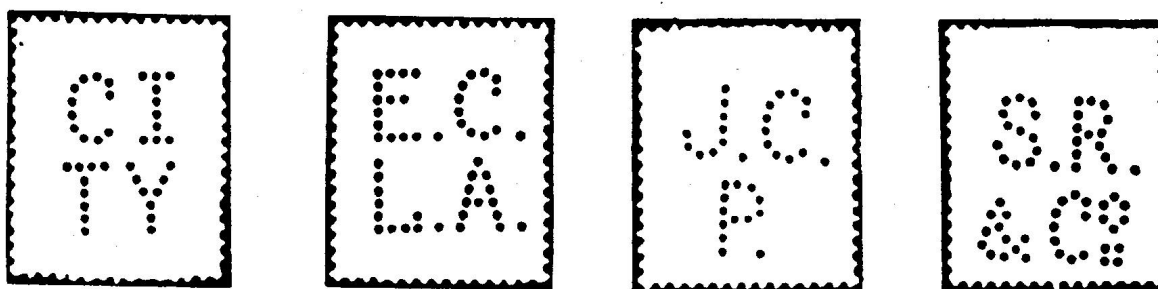


A larger set of letters also appeared on Queen Victoria 1d Reds and later issues. This alphabet is characterised by a tailed ampersand (type IIIb) and the general proliferation of stops.



A	B	C	D	E	F	G	H	I
J	K	L	M	N	O	P	Q	R
S	T	U	V	W	X	Y	Z	ampersand

And finally, an alphabet characterised by large, 6 pin high letters, serifs, often with stops, and a characteristic 'C'.



A	B	C	D	E	F	G	H	I
J	K	L	M	N	O	P	Q	R
S	T	U	V	W	X	Y	Z	ampersand