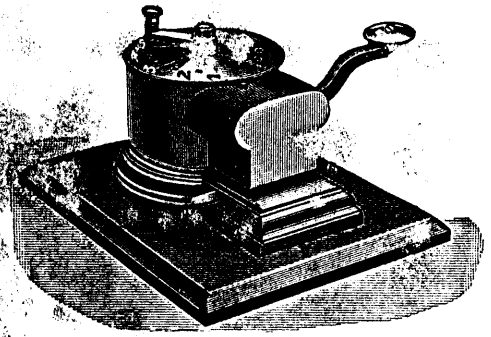


BRADSHAW & CO.
 MERCANTILE &
 STATIONERS
 35, Bucklersbury,
 QUEEN VICTORIA STREET,
 E.C. 4.
 No 22901



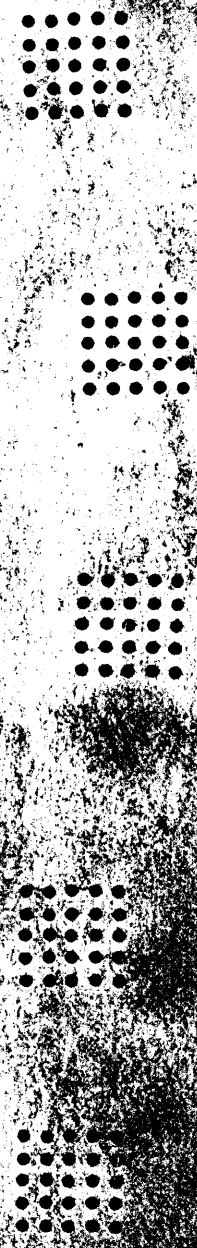
SLOPER'S PATENT
 AUTOMATIC AMOUNT PERFORATING MACHINE.
 Price £5 . 17 . 6.

Price for machine and dies to do 1 to 100 will be £8.5.0 It will consist of machine and 21 dies and two blanks. They will be able to do up to 199 with this complement of dies but will require the same number for 100.

Machine and 15 dies to do 1 to 50	£6.18.0
Do 12 Do 1 to 20	£6.7.6
Do 12 Do A to L	£6.7.6
Do 26 Do A to Z	£6.15.0

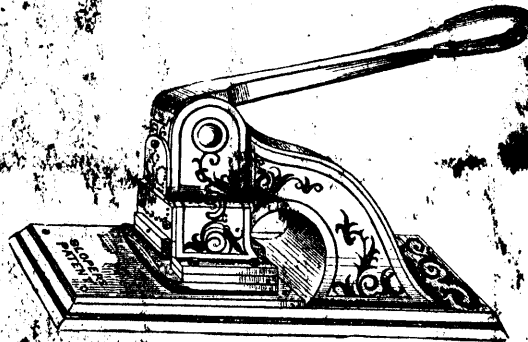
Taking 20 at a time they will be able to get through some thousands in an hour.

The above prices are strictly net and do not include carriage!





CLOPERS
PATENT



*Our system is the only protection
against fraud. It saves time,
several Cheques can be Crossed at one
stroke.*

HOWELL JAMES & CO
ROGERS ROAD & CO

LONG & WEST
HOWELL JAMES & CO

SMITH PAYNE & CO
WARD STURT & CO

CLYDE HILLS & CO
ROGERS ROAD & CO

LONG & WEST
LEADLEY

Wm. B. & S. Co.
of
LEE ASS^{ts} of Scot^{land}

MARTIN & Co
of
J. SLOPER & Co

STAMP BK
of
J. HARRIS & Co

LOWnd & COUNTY
of
GEO. HARRIS & Co

SMITH FAYNE & Co
of
L^{ds} BROS & Co

MARTIN & Co
of
JOSEPH SLOPER

2.
BK of ENGLAND
of
PAYMASTER GENERAL

3.
LOWnd & WEST
of
HOWELL JAMES & Co

4.
BANK of ENGLAND
of
CROCKER BROS & Co

5
COUTTS & CO

6
NATIONAL PROVINCIAL
BANK of ENGLAND

7
JOHN JARVIS
& CO

8
SIR S. SCOTT BART & CO

9
BIRM & MID B

10
BANKERS

11
UNION BANK
ROWLANDS & FRAZER

12
SMITH PAYNE & CO
BOLLEN & TIDSWELL

13
BERWICK & CO
FOSTER & CO

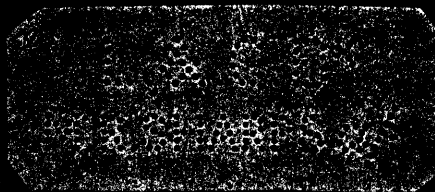
14
COMMERCIAL & SCOT
LIFE ASS^Y of SCOT

15
BANKERS

16
UNION BANK
CHANCERY LANE
a/c of
HORACE COX

17
NAT PRO B^k BUTE D^{ks}
a/c CORY BRO^s & C^o

18
BARNETS
a/c
T.B. MUSGERDGE



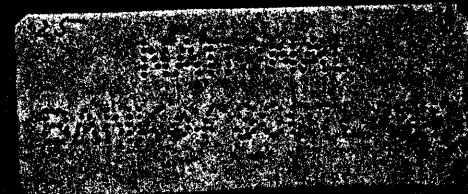
20
BROOK & CO
NOT NEGOTIABLE

21
BARCLAY & CO
a/c
BRADBURY CREATOR & CO

22
PRESOTT & CO
a/c of
SMITH & LISTER

23
LON^d & CO
W^m ROBINSON & CO

24
RAISON & CO
a/c of
DEBY STILLWELL & CO



26
200

27
200

28
200
NOT NEGOTIABLE

29
200
2/0 of

30
200
WILLIAM ALLEN

31
200
NOT NEGOTIABLE
UNDER POUNDS

32
200

33
200
SPARROW
CRABB VELEY

34
200
BARCLAY
ESTILLWELL

35
200
LONDON & WEST
ULLATHORNE'S

36
200
VALDUI
NOT NEGOTIABLE

37
CALLE
CALLE

[Faded text]

39
CALLE

[Faded text]

[Faded text]

[Faded text]

43
CALLE

41
CALLE

45
CALLE

46
CALLE

47
CALLE

48
CALLE

49
VOX
2 FEB 50

50
DET 3007
12

51
AMERICAN
2 10 50

52
RAD
AN DISPLAY TICKET CO
25. 10. 70

53
100

54
100

55
100

56
O.L. ACOT
FRANCE CORP
10. 12. 50

57
100

58
CAMERIAN PRO
100

59
100

60
100

61
GAZES TOURS

62
GAZES TOURS

63
GAZES TOURS

64
GAZES TOURS

65
GAZES TOURS

66
GAZES TOURS

67
GAZES TOURS

68
GAZES TOURS

69
GAZES TOURS

70
GAZES TOURS

71
GAZES TOURS

72
GAZES TOURS

73
GAZES TOURS

74
GAZES TOURS

PRINTED BY CANCELLED MACHINES.

Dr. & Co casting. £2. 10. 0
& Co N.N. do £3.
Dating machine £3. 15. 0

CANCELLED

76
CANCELLED

77
CANCELLED

78
CANCELLED

79
CANCELLED

80
CANCELLED

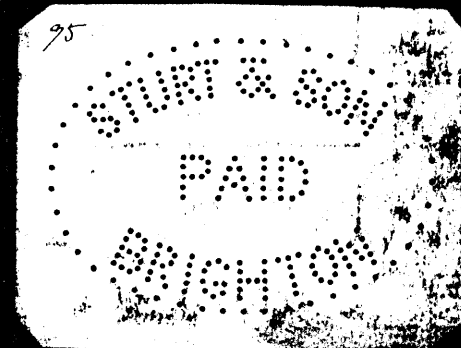
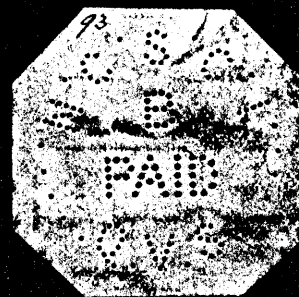
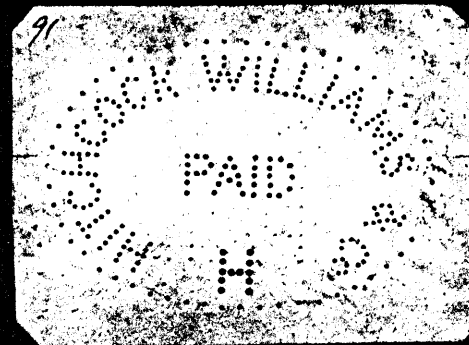
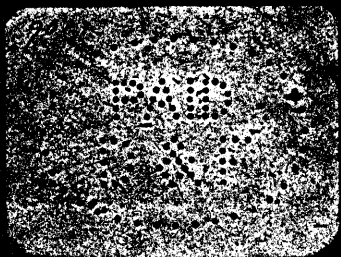
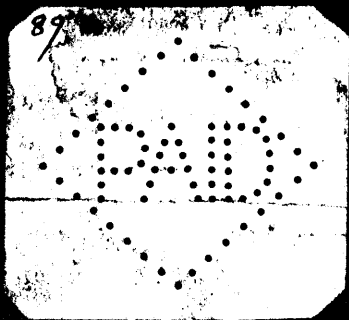
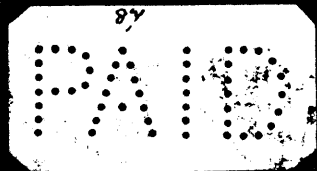
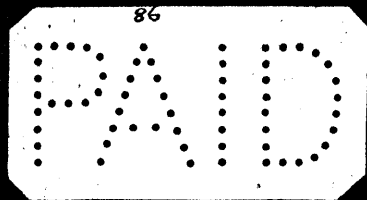
81
CANCELLED

82
CANCELLED

83
CANCELLED
N.B. of 1P

84
CANCELLED

85
CANCELLED
J. G. MACDONALD
MANAGER



100
PAID
W. HARRISON

98
PAID
W. HARRISON

99
PAID TO ORDER OF
ADELAIDE

101
RECEIVED
W. HARRISON

101
PAY TO ORDER OF
L. VON HOFFMANN &
CO

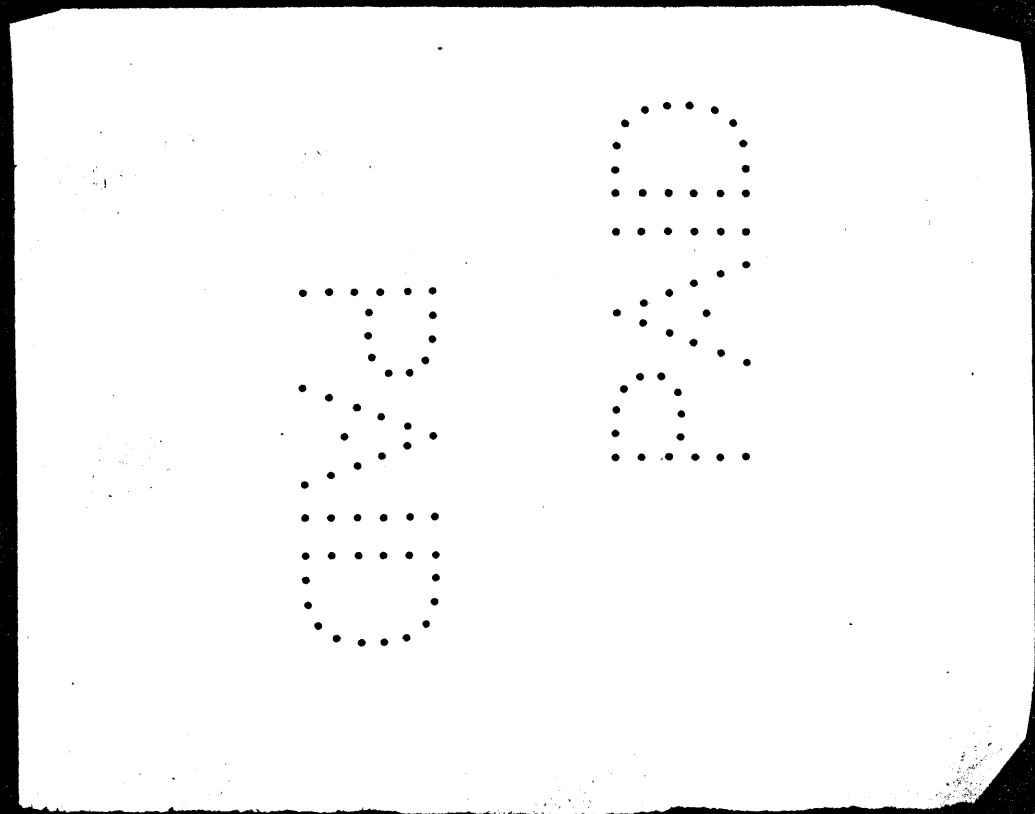
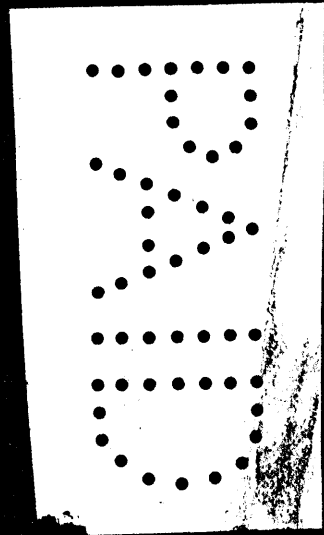
102
PAID TO ORDER OF
RECEIVED
TELLER
QUEBEC

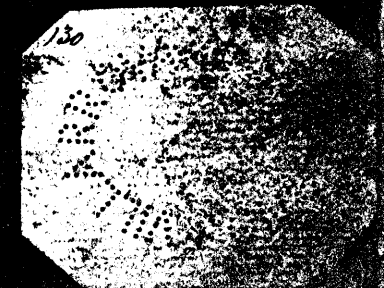
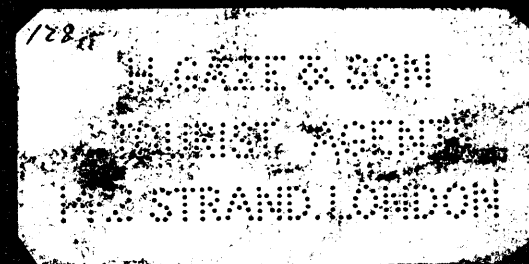
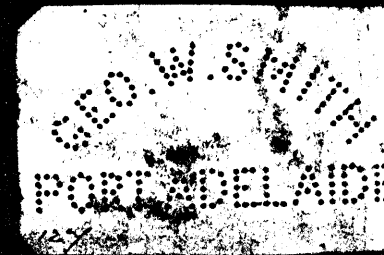
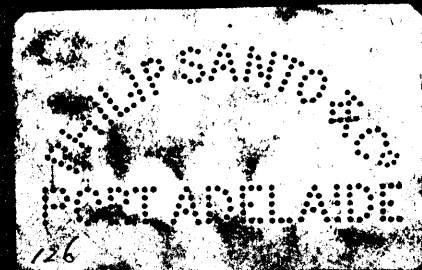
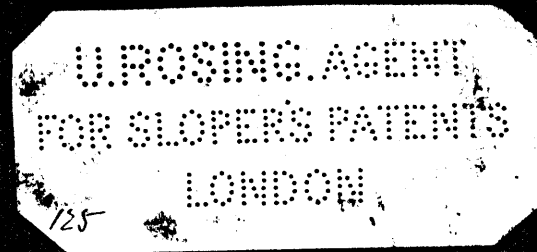
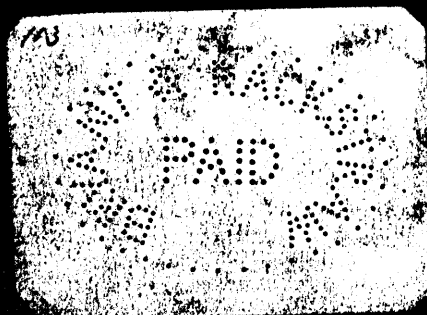
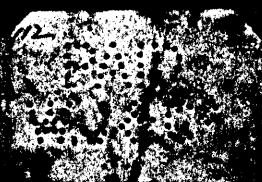
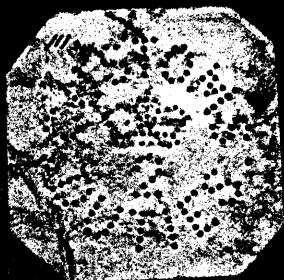
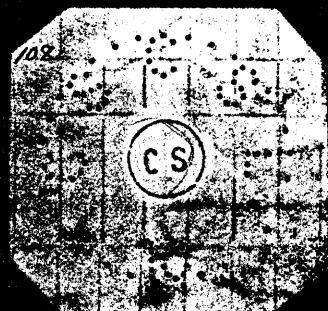
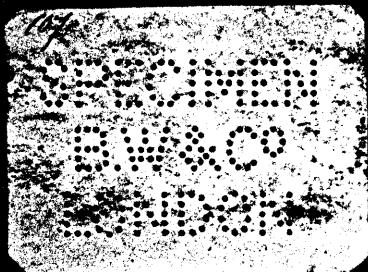
103
PAID TO ORDER OF
ADELAIDE

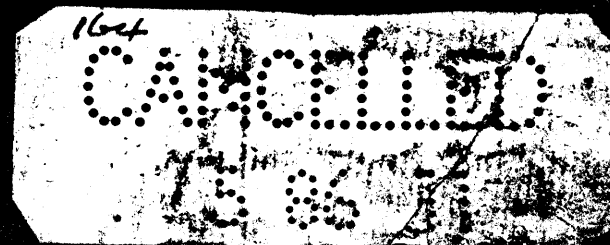
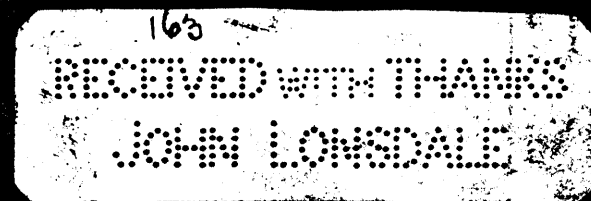
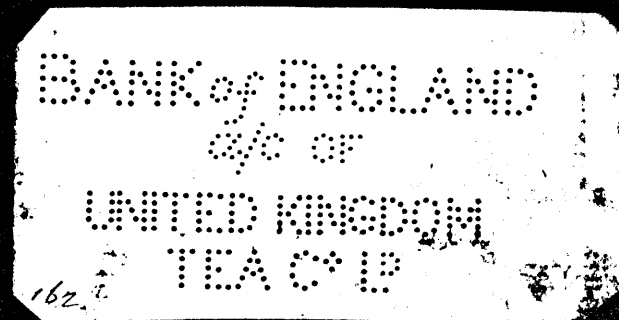
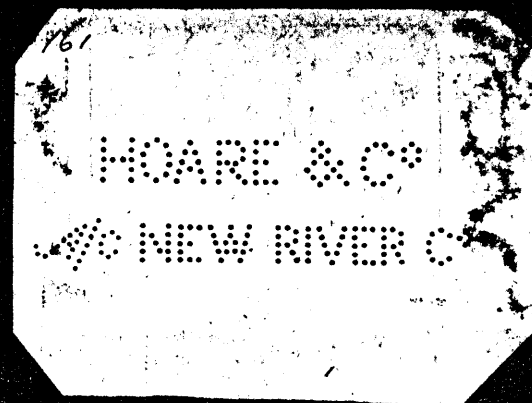
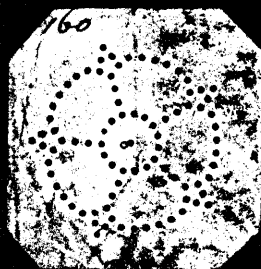
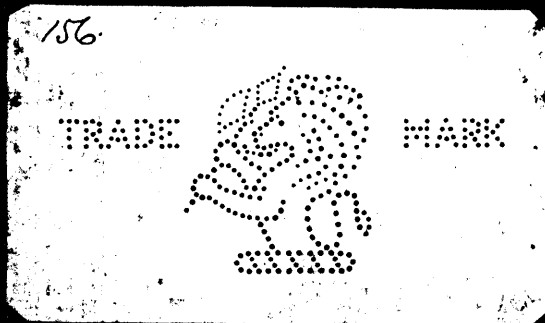
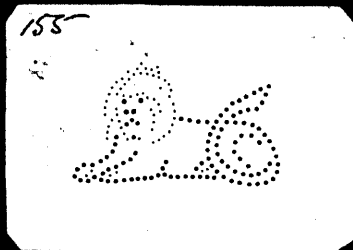
104
UNDER
TWENTY

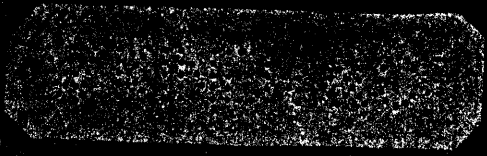
105
SECURITY FOR FUNDED
DEBTS
1878

106
RECEIVED
BY A...

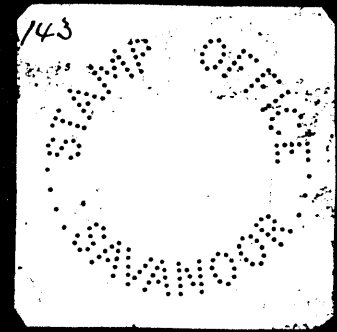








142
GUARDIA
BIRKENHEAD

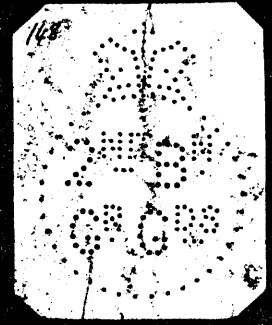


144
EASTBEACH FARM

145
HAWTON

146
LITTLE & CO

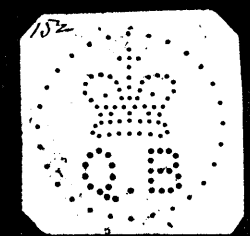
147
PUBRWAIR



149
GUARDS
CLUB



151
GUARDS
CLUB



153
GUARDS
CLUB



131
THOMAS HARDEN
MERCHANT
COALS COKE SALT & C

132
ST WINEFRA
BRENNHEAD

133
HARLEY
INSTITUTION

134
PANCRAS
IRON WORKS
LONDON

135
COAL
BULDER
COAL

136
E. WILLIAMS & CO

137
MUNICIPAL
BUILDING SOCIETY

138
CERTIFIED
BANK OF NEW YORK
N.Y.

139
SOUTH AUSTRALIAN
SOUTH AUSTRALIAN
SOUTH AUSTRALIAN

140
GENERAL BANKING
PAID
SYDNEY

GENERAL LEADER
CASH
157 ST. LOUIS MO.
165

166

167

168

169

170

171

172

173

174

175

176

177

178

179

174

174

174

174

176

176

176

119
LONDON

120
LONDON

121
LONDON

121

123

124

112
[Punctuated text]

113
[Punctuated text]

[Punctuated text]

114
[Punctuated text]

115
[Punctuated text]

113
[Large punctuated text block]

Handwritten: 1/3
1/3
1/3

Metropolitan Bank

Metropolitan Bank

JUN

NO CHARGE FOR DIE.

Handwritten: 1/3

Metropolitan Bank

Handwritten: 1/3
1/3
1/3

Metropolitan Bank

HART & LEW

THE LEICESTERSHIRE
MINERAL WATER CO

CANCELLED

Handwritten: 1/3

METROPOLITAN BANK
CORPORATION
OF WEST BROMWICH

Handwritten: 3/31

LOVELLY & CO BANK
MORGAN & SCOTT

Handwritten: 3/31

LLOYD BANK
HEATH



.....
..... 80
.....

80

NOT NEGOTIABLE

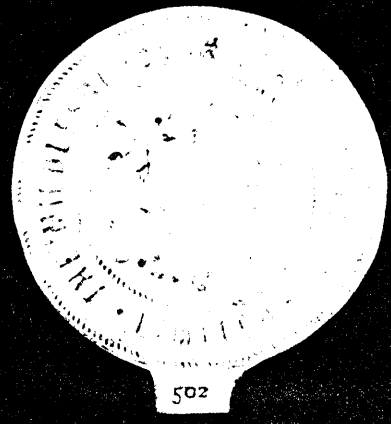
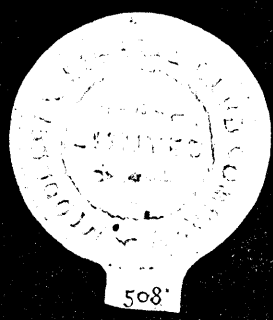
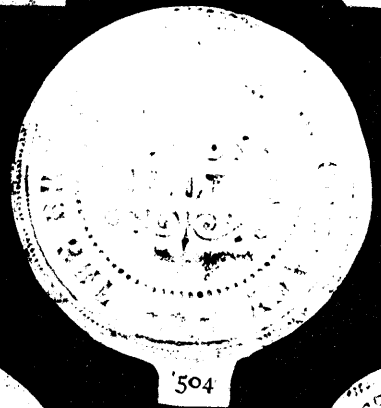
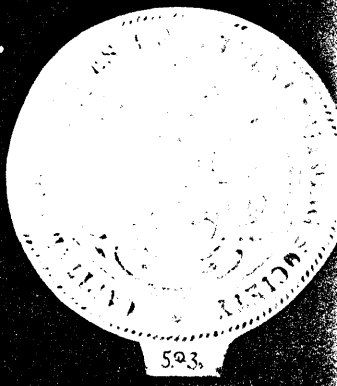
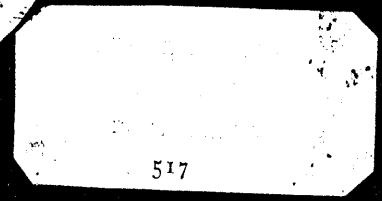
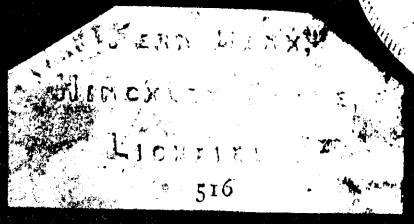
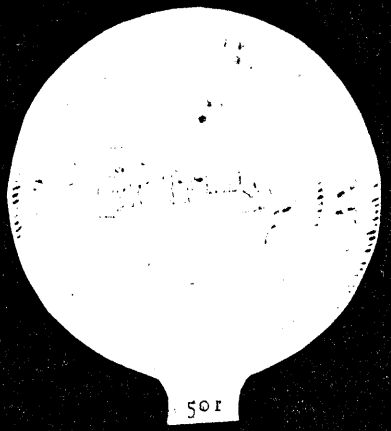
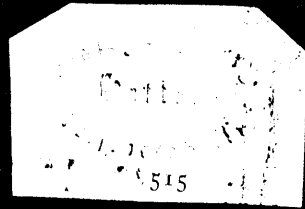
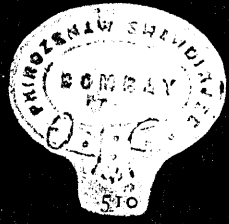
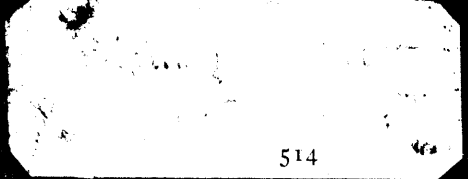
.....
..... 80
.....

NOT NEGOTIABLE
.....
..... 80
.....
..... 80
.....

TO PAYEE ONLY
.....
..... 80
.....
NOT NEGOTIABLE
.....

80

NOT NEGOTIABLE
.....
..... 80
.....
NOT NEGOTIABLE
.....



COLNE PUBLIC LIBRARY
ACCN No.

Public Library
Heighley

Public Library,
Heighley.

Public Library,
Heighley.

COLNE PUBLIC LIBRARY
ACCN No.

COLNE PUBLIC LIBRARY
ACCN No.

Public Library,
Heighley.

Public Library,
Heighley.

COLNE PUBLIC LIBRARY
ACCN No.

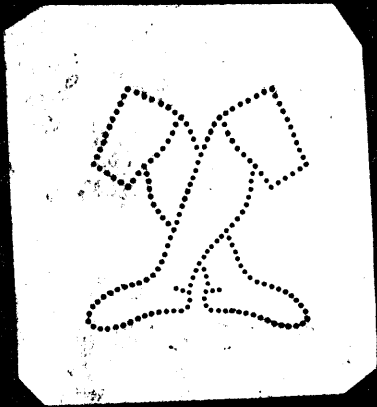
COLNE PUBLIC LIBRARY
ACCN No.

LABOR BROS OF P
%
BOLTON UNION OF P

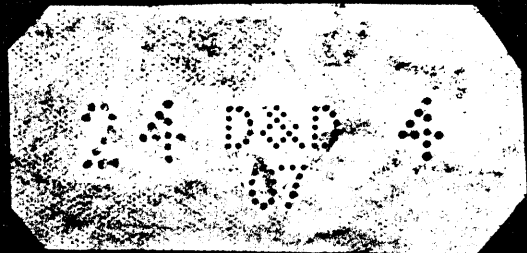
W. DAVENPORT
LIMITED
W. DAVENPORT

WILLIAMS DEACON & CO
%
BOLTON UNION OF P

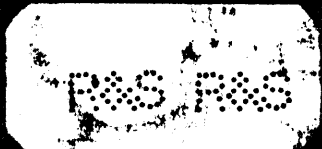
STATERIDGE PUBLIC LIBRARY
ACCN No.



W & L DISTRICT BANK
S. TURNER & CO. LD



W & L DISTRICT BANK
S. TURNER & CO. LD



W & L DISTRICT BANK
S. TURNER & CO. LD



TELEPHONE NO 208.

19 3 07

Lion Brewery.
Blackburn.

Novr 21st 1906

Mr W. H. Green

1 King Street East

Rochdale.

Dear Sir.

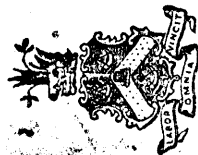
Yours of the 16th inst came duly tohand, and we had never timed the lads, but since receipt of your letter we have watched them without comment, and find that it averages about 6½ minutes per thousand.

The machine is very satisfactory.

Yours truly

Nuttall & Co Blackburn Ltd.

J. Lucas.



BUTLER WOOD,
Chief Librarian.

BRADFORD PUBLIC LIBRARIES.

Central Library, Darley Street.

BRADFORD PUBLIC LIBRARIES

190

Dear Sir,
note have been in sending
Bradford stamping is received. I
may say that the machine is
found to be an excellent one. It is in
excellent condition and is
very satisfactory.
Yours truly
James H. Harker
Chief Librarian

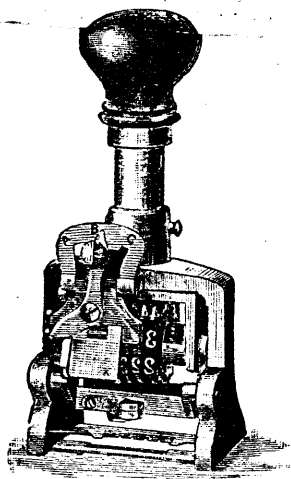
The **A.B.C., 3, 4, & 5 Action**
Automatic Hand
Numbering Machines.

The BEST and CHEAPEST
 Machine in the WORLD
 with Hand-cut, Hardened
 Steel Wheels equal to
 type.

With Dial Setting Movement.

CLEAR IMPRESSIONS. PERFECT ALIGNMENT.

THREE ACTION MACHINE.



CAUTION.—Beware of Machines
 on the Market with SOFT,
 SHALLOW machine-cut figures
 ASK FOR THE A.B.C.

For NUMBERING

CONSECUTIVE,
DUPLICATE,
TRIPLICATE,
QUADRUPLICATE,
 and **REPEAT.**

Price of Three Action Machines.

Size of Figures C to F	4 WHEELS.	5 WHEELS.	6 WHEELS.
...	50/-	54/-	58/-
GG ,, H	54/-	60/-	66/-
I and J	60/-	66/-	72/-

Each Additional Action 6/- extra.

Patent Automatic Cyphers, to number from No. 1, are fitted
 at 6/- each.

STYLE AND SIZES
 OF FIGURES.

C. 120,130

D. 234567

E. 345678

F. 456789

GG. 567890

G. 123456

H. 234567

I. 345678

J. 456789

In ordering, please quote
 size of Figures and how many
 wheels required.

All Machines number from 1—without or with preceding Zeros.

Any size or style of Figures made to order.

Each Machine is packed in Box with 1 Bottle of Ink, 2 Reserve Pads, Pointer and Distributor, and full instructions.

EVERY MACHINE IS GUARANTEED, AND ALL SIZES ARE IN STOCK.

INKS.—Attention should be paid to the Ink used in
 connection with this Machine. Many Inks contain acids
 which corrode even hardened steel wheels; many of our
 Machines sent for repair have all the figures partially eaten
 away. Our Inks are the best obtainable, giving an even jet
 black impression equal to printers' ink. All other colours
 are equally of the finest description.

REPAIRS

of every description quickly and
 cheaply executed.

Mahogany Boxes, Hand-made, Dovetailed and Polished.

IN THE PRICE OF _____

SCHREIER'S

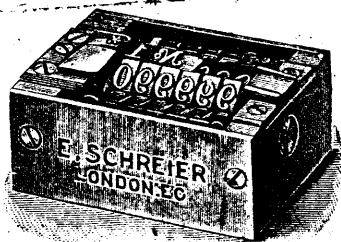
Type-high Numbering Machines.

For PRINTING . . .
and NUMBERING . .
in ONE OPERATION.

COMPACT.

RELIABLE.

The BEST and CHEAPEST Machine
in the Market with
HAND-CUT HARDENED STEEL
WHEELS like Type.



Size and Style of Figures.

A № 1234567890
B № 1234567890

UP-TO-DATE.
PERFECT.

NOTE.—Notwithstanding the great
reduction in price these Machines still
contain the . . .

High-class Workmanship

which has made them famous.

NETT REDUCED PRICES.

4 Wheels (1 to 9,999). 5 Wheels (1 to 99,999). 6 Wheels (1 to 999,999).
£2 10s. £2 15s. £3.

All machines are fitted with sinkable noughts, and will print from 1 to 999,999, or from 000001 to 999,999. Patent Automatic Sliding Cyphers to print from "No 1" to "No. 999,999," can be fitted at a cost of **6s.** extra.

NOTE.—Any letter or sign can be fitted to the Machine.

Special Drapers' Ticket Machines.

With TWO and THREE Wheels.

Printing Automatically from 50 to 1 or 1 to 50, continuously
without stopping the press to reset the Machine.

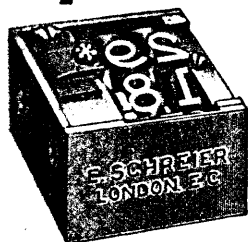
TWO Wheels, from 50 to 1 or 1 to 50 - £2 5s.

THREE Wheels, from 100 to 1 or 1 to 100 - £2 12s.

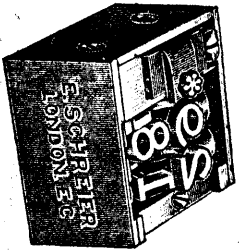
100.

50.

Size and Style
of Figures.



Contractor to H.M. Government,
Printed in India Office.



D. 234567
 E. 345678
 F. 456789
 GG. 567890

Special Drapers' Ticket Machines.

With TWO and THREE Wheels.

Printing Automatically from 50 to 1 or 1 to 50, continuously without stopping the press to reset the Machine.

TWO Wheels, from 50 to 1 or 1 to 50 - £2 5s.
 THREE Wheels, from 100 to 1 or 1 to 100 - £2 12s.

Size and Style
 of Figures.
100.
50.

Contractor to H.M. Government.

NOTE: Any letter or sign can be fitted to the machine to suit customers' requirements.

✱ **DUPLICATE,**
TRIPPLICATE,
 ✱ **QUADRUPPLICATE,**
and REPEAT.

Price £1 . 18 . 0.

Price £2 . 7 . 6.

Price £1 . 18 . 0.

Price £2 . 7 . 6.

Important Extract from the "DAILY TELEGRAPH,"

9th January, 1901.

REMARKABLE CHEQUE FRAUDS.

Alfred Wilson, 25, tailor, who had been indicted for forging and uttering three cheques on the London and Provincial Bank with intent to defraud, pleaded guilty to uttering, but not to forging, and the plea was accepted by Mr. Gill, who prosecuted for the Bankers' Association.

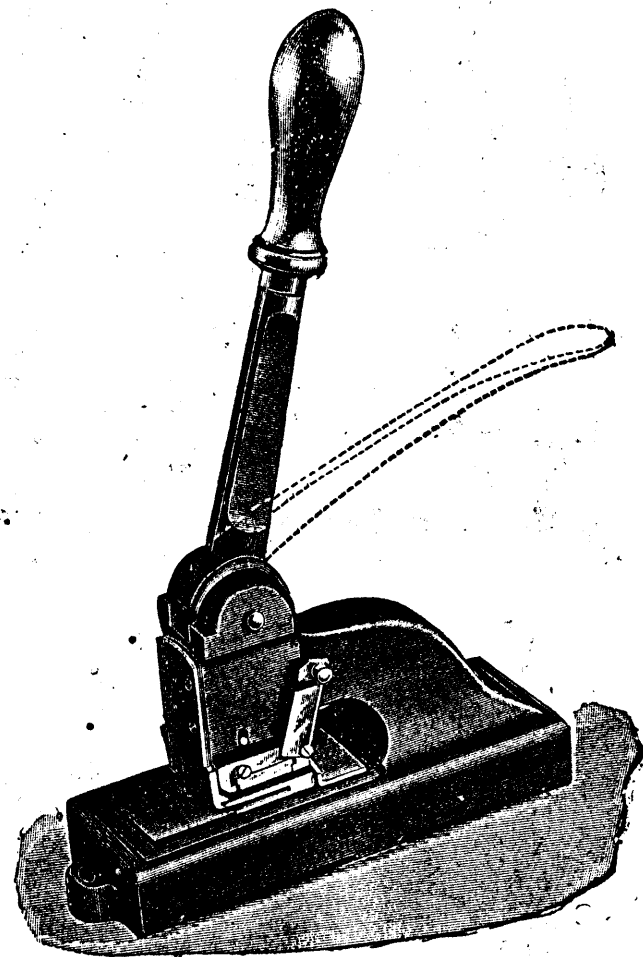
It appeared that the prisoner, having purchased goods at different shops, told a story of having to send that night a guinea to a lady friend, and as the post office was closed, asked the shopkeepers to favour him with a cheque for 21s. in exchange for cash. Having in three cases obtained cheques under these circumstances, he, or somebody else, altered them; one to £75, one to £98; and one to £123. There were several cases besides the three included in the indictment, and the amount prisoner succeeded in obtaining was about £600.

In reply to the Recorder, Mr. Gill said the alterations of the amount in the cheques were effected by some chemical means so powerful that no glass could trace the erasure of the original figures.

The Recorder said that was a most serious fact for the bankers and the public. Prisoner was evidently the confederate of a number of ingenious and clever forgers, whose acquaintance he probably made whilst he was in penal servitude.

Sentence of seven years' penal servitude was passed.

Sloper's System of Perforation prevents Forgery.



•••••
•••••
•••••
•••••
•••••

2xaw

McDermis

June

May 19

1905

ROBBRIES FROM LETTER BOXES

SCIENTIFIC THIEVES PUZZLE THE CITY POLICE.

Hundreds of pounds in cheques and bank notes are being stolen just now from letter boxes in the City.

The mode of procedure suggests the careful discrimination of specialists, and the City police believe the robbers belong to a well-known gang.

A strong piece of cardboard interlaced the whole length with a strip of coarse whalebone, substitutes their stock-in-trade. At a convenient moment this is carefully pushed through the letter-boxes. In order to get the cardboard through it must be bent, of course, with the result that immediately it drops inside the box, and the thief can then have away the spring in the whalebone forced it back against the sides of the letter-box.

The thief armed with a long pole, spiked at the end, finds it easily to get into the box and the closer pointing of the contents makes the task all the more easy.

The thieves got stuck in the office and business hours close. They got the late evening and early morning postal deliveries, and these being the times when the post is not sent and not the time their habits are large.

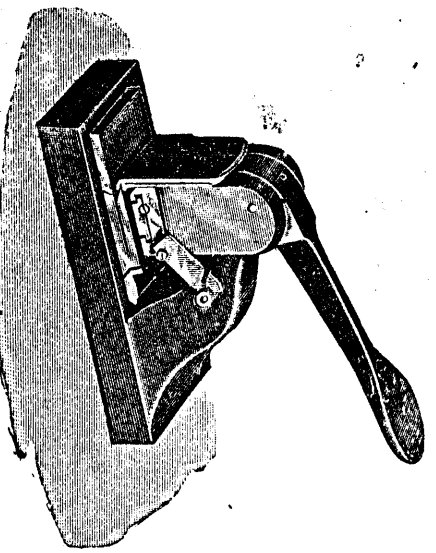
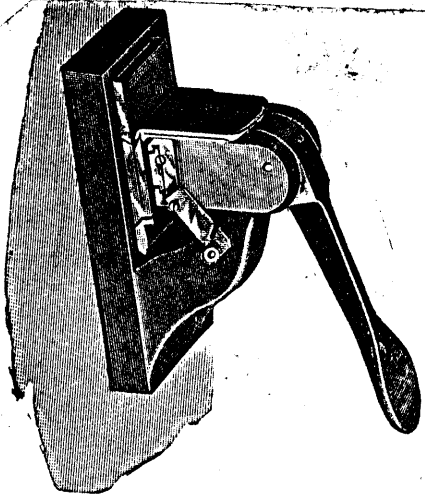
CHEQUES QUICKLY CASHED.

Many of the houses mentioned are those which advertise largely all cheques, postal orders, etc. must be addressed to the bank. The robbers are as wily and disposing of the cheques and notes as in their method of gaining possession. The police have discovered that many cheques have been cashed an hour or two after being stolen.

Moreover, crossed cheques present an obstacle. By means of a chisel if the thieves are able to obliterate the words "and Co." written between the lines, an endorsement which makes the cheque open. The thief then pays it over to a tradesman, who immediately hands them over the change. The tradesman pays the cheque to his own account, and is surrounded a few days later when he finds that it has been stopped.

It is estimated that during the last six weeks the thieves have netted sums running well into four figures.

The only clues held by the police are the whalebone cardboard left behind, and the original endorsement on the cheques.



STANDARD III

LETTER-BOX THEFTS.

The police in the West Central district have had brought to their notice a number of letter-box thefts which have taken place in the neighbourhood of Holborn. Their investigations show that the usual methods adopted by letter-box thieves of inserting pieces of wire or pieces of wood at the ends of which are adhesive substances into the letter-boxes have been followed. It is reported that a cheque for £400 stolen from one of the letter-boxes has been successfully negotiated in Birmingham, while in other instances the thieves have, by chemical means, obliterated the "and Co." mark, and have added figures to the amounts in the cheques.

STANDARD III

NOVEL CHEQUE FRAUDS.

A somewhat ingenious, but not uncommon form of cheque fraud has recently been practised upon a well-known London bank. The criminals have in the first instance obtained possession of letters containing cheques from the private letter-boxes of firms in the suburbs. Then, by some means at present unknown, the original writing and figures have been eradicated or altered and the cheque presented for payment.

Before the use of specially prepared paper the employment of acid to remove ink from cheques was not infrequently employed, but examination of those recently tampered with has shown that another device has been resorted to, a fact which may act as a warning to other banks.