

The following two articles are published as received from Vahe Varjabedian.

## EGYPTIAN PERFINS

### PRICE LIST

Vahe Varjabedian

Its been about 2 years that I have published my booklet about the Egyptian perfins. Many of the perfin collectors all around the world are asking me about the average price of these perfins, so I prepared a price list for single stamps including definitive , commemorative and on covers or postcards. This list will make it easier to perfin collectors to pay the right price for any Egyptian perfins. All prices are in US dollars.

Firm	Page	Definitive	Commemorative	On covers
ABE	5	50 c.	1-2	20-40
BCI	6	10	20-40	60-100
BCIE	7	30-50 c.	2-4	20-40
BIE	8	30-50 c.	1-3	10-20
BM	9	20	30-50	100-200
CLA	10	30-50 c.	1-2	10-20
CLC	11	20-40 c.	50-70 c.	5-20
CN	12	2-4	5-10	40-60
CN	13	1-3	4-8	15-30
CN	14	1-3	4-8	15-30
CB&co	15	8	12-20	50-80
EOB	16	10	20-30	50-100
ESSCLTD	17	20	40-50	100-200
IOB	18	2-4	8	30-60
JRC	19	3-6	10	40-60
KHA	20	4-8	15	50-100
KHC	21	4-8	10-15	50-100
LS	22	5-10	20	50-80
OB	23	20-40 c.	50-80 c.	15-25
PO	24	1-3	5	20-30
ROL	25	4-8	10-15	40-60

RC&co	26	2-4	5-10	40-60
RC/co Ltd	27	5-10	15-20	50-75
SB	28	50-80 c.	2-4	20-40
TC&S	29	50 c.-1	2-4	20-50
VO&co	30	20-40 c.	1-3	10-20
AHS	31	10	20	100
FMC	31	10	20	100
PS&co	31	10	20	100
WEK	31	10	20	100
Arabic N	31	10	20	100
OBE	32	10	20	100
EA	32	Not valued	Not valued	Not valued

I want to make a notice that the prices can jump up if a very common firm uses unusual stamps as high values 5-10 piasters for PRE 1915 stamps or 50piasters-1 pound for later issues.

**The following 8 illustrations should be actual size copies of the stamps at Fig. A to H in the next article.**

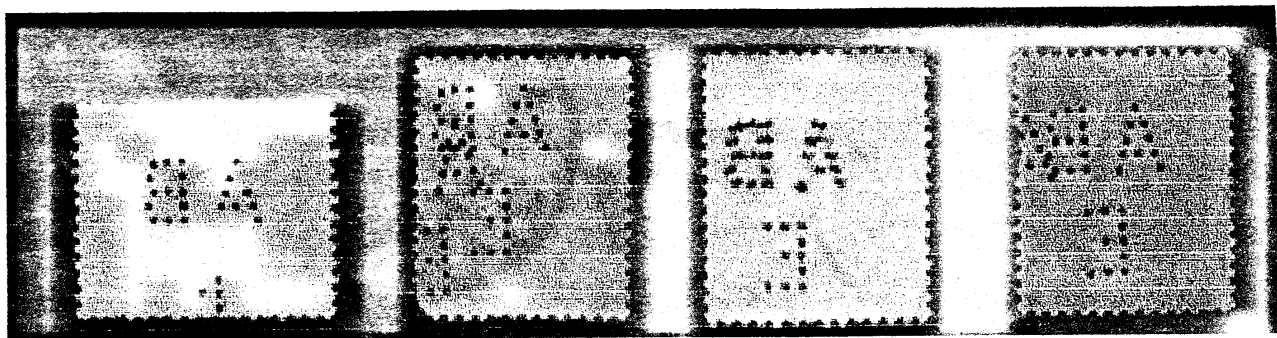


Fig.A

Fig.B

Fig.C

Fig.D

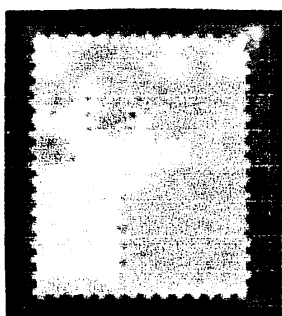


Fig.E

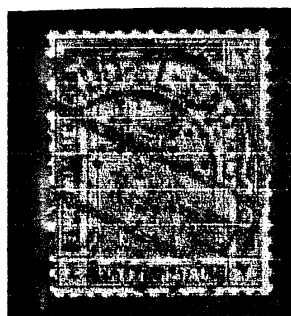


Fig.F

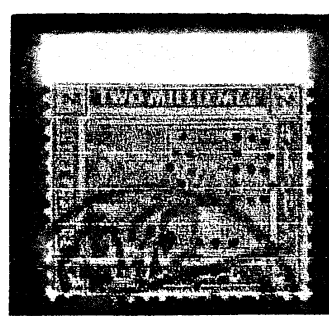


Fig.G

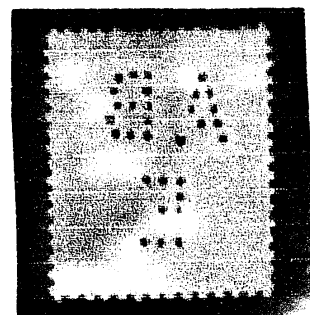


Fig.H

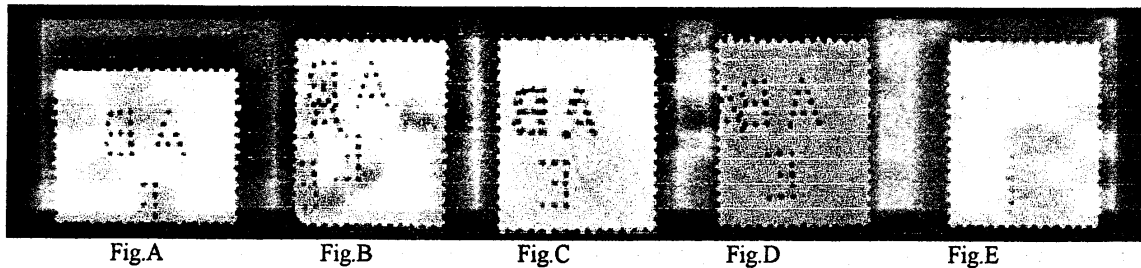
# VARIETIES ON EGYPTIAN PERFINS

Vahe Varjabedian

Exploring the Egyptian Perfins is really fun, and you always find new interesting varieties, some are normal but many are unusual, so I decided to write a series of articles about the varieties of these firms.

## "THE AGRICULTURAL BANK OF EGYPT"

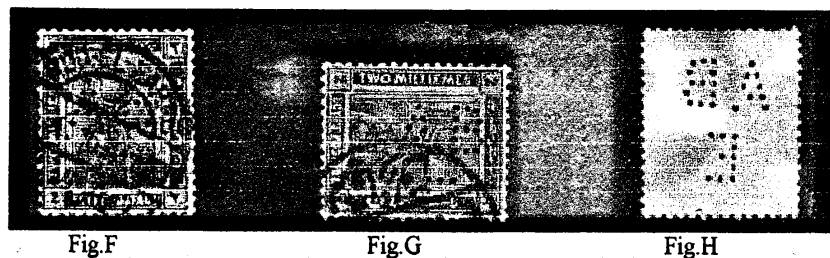
This Bank started using perfins during (4-8-1910) till (8-10-1932). It seems that this bank had a big correspondence because we find often in the market **ABE** perfins. In the early years, it was strange that the bank used their first punctured stamps with broken pins. The letter A has 8 holes instead of 10 as seen in Fig A



But shortly they adjusted the pin and therefore this variety lived shortly for only 3 months. They continued their correspondence with the new adjusted pins.

During the period of 1912-1918 I couldn't find anything except for some double punctures as seen in (Fig B C D) or close holes seen in (Fig E).

All The punctures of the Bank Stamps were always vertical except for the 2-3 punctured examples that were horizontal (Fig F&G) found in 1916&1918.



Starting from the year 1918 till 1930 we notice that the Letter A has 9 holes instead of 10 (Fig H), which is quite strange that the puncture employee didn't notice this broken pin!